

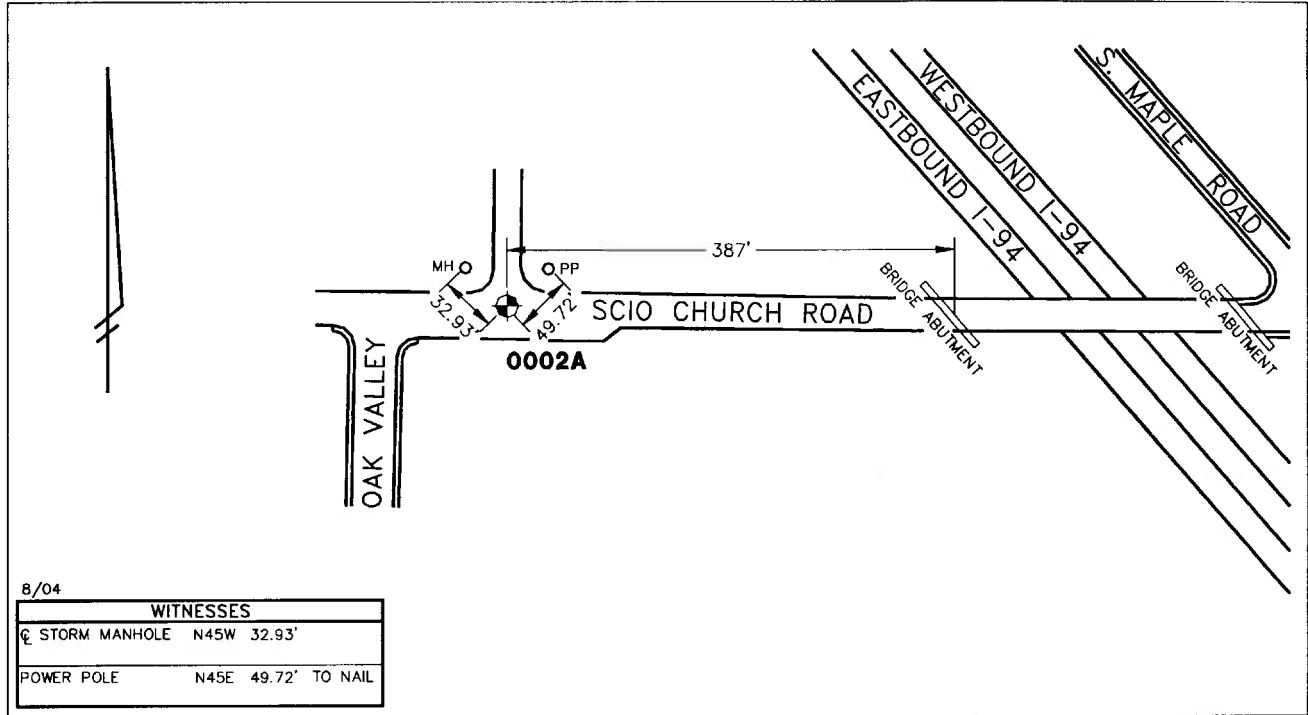
Primary Control Point

AAGRS No. 0002A

City of Ann Arbor
Public Services Area • Project Management Unit
CONTROL STATION DATA SHEET

NGS PID AA5167

Approximate Location: Scio Church Rd., west of I-94



STATION 0002A IS THE SOUTHWEST CORNER OF SECTION 31, ANN ARBOR TOWNSHIP AND IS LOCATED IN SCIO CHURCH ROAD, APPROXIMATELY 387' WEST OF THE WEST SIDE OF THE I-94 BRIDGE, SAID STATION BEING IN THE SOUTHWEST 1/4 OF SECTION 31, ANN ARBOR TOWNSHIP, MICHIGAN. THE STATION IS LOCATED 32.93' SOUTHEAST OF A STORM MANHOLE AND 49.72' SOUTHWEST OF A POWER POLE. THE STATION IS A PRIMARY CONTROL STATION AND IS DESCRIBED AS THE 1993 EDITION OF THE CITY OF ANN ARBOR BRASS DISC, SET IN CONCRETE PER DETAIL I AND IS ACCESSED BY A MONUMENT BOX SET FLUSH WITH THE ASPHALT. THIS STATION WAS SET BY THE CITY OF ANN ARBOR IN 1993 AND IS PAIRED WITH STATION 0002B.

Horizontal		Vertical	
Latitude (dms)	N 42 15 22.28620	Accuracy	2nd Order Class II
Longitude (dms)	W 83 46 46.08315	Datum	NAVD 88
State Plane Zone	2113 MI South	Elevation in meters	293.679
Scale	0.99996668	Elevation in International feet	963.51
Geoid Height in meters	-33.97		
Convergence (dms)	0 23 58.6		
Accuracy	1st Order		
Datum	NAD 83		No. 0002A
Easting (X) in meters	4048452.259		Sector: WC
Northing (Y) in meters	84165.380		
Easting (X) in International feet	13282323.684	Grid Azimuth to	
Northing (Y) in International feet	276133.136	Control Station 0002B	87°25'26"