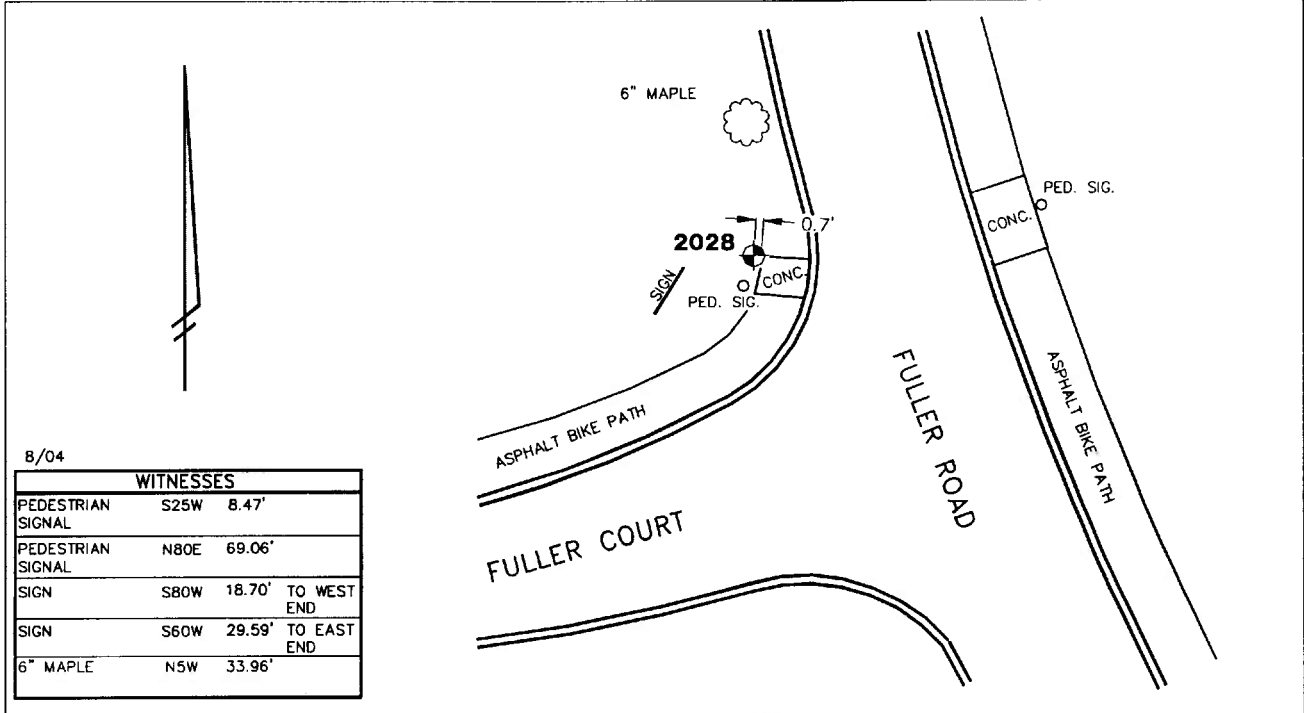


City of Ann Arbor
Public Services Area • Project Management Unit
CONTROL STATION DATA SHEET

Approximate Location: Fuller Rd. and Fuller Ct.



STATION 2028 IS LOCATED AT THE NORTHWEST CORNER OF FULLER ROAD AND FULLER COURT, SAID STATION BEING IN THE NORTHEAST 1/4 OF SECTION 27, ANN ARBOR TOWNSHIP IN THE CITY OF ANN ARBOR, MICHIGAN. THE STATION IS LOCATED 0.7' NORTHWESTERLY OF THE NORTHWESTERLY CORNER OF THE CONCRETE RAMP LOCATED AT THE NORTHWESTERLY CORNER OF FULLER ROAD AND FULLER COURT. SAID STATION IS A VERTICAL CONTROL STATION AND IS DESCRIBED AS THE 1993 EDITION OF THE CITY OF ANN ARBOR BRASS DISC, SET IN CONCRETE PER DETAIL II AND IS FLUSH WITH THE GROUND. THE STATION WAS SET BY THE CITY OF ANN ARBOR IN 1998.

Benchmark

Vertical

Accuracy	Local Control
Datum	NAVD 88
Elevation in meters	241.012
Elevation in International feet	790.72

No. 2028
Sector: EC