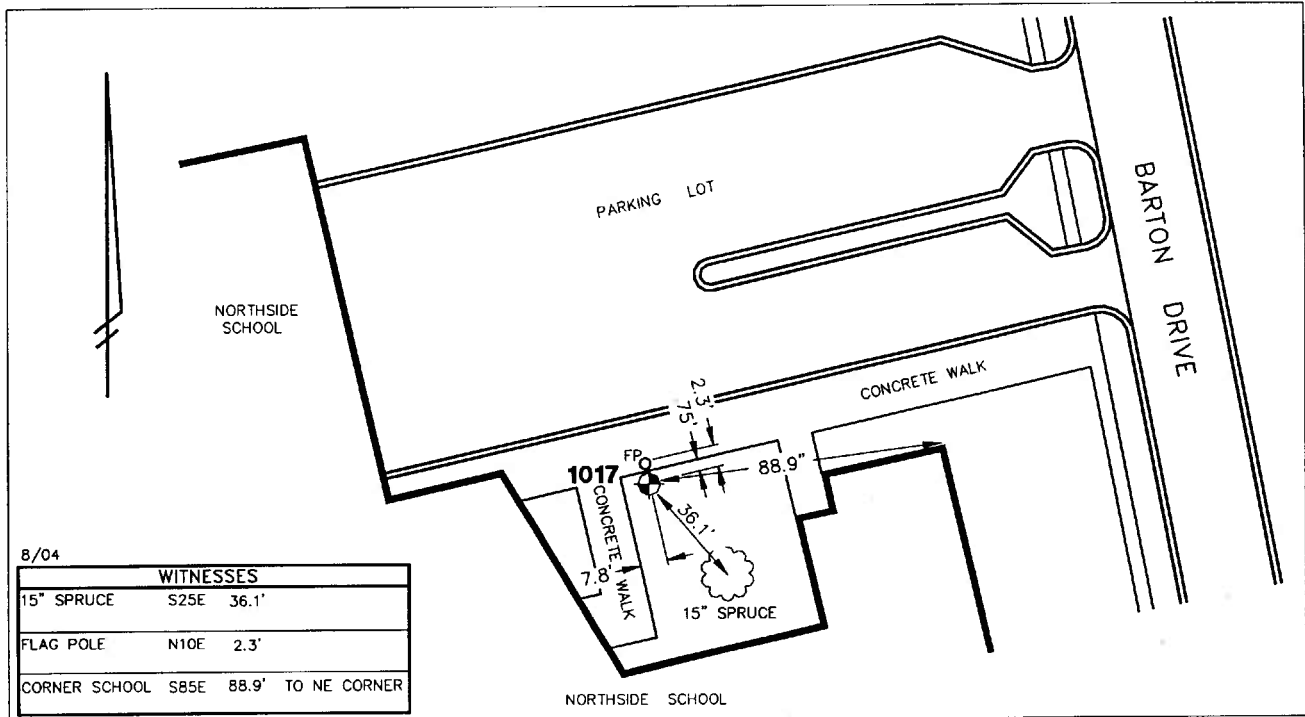


Public Services Area • Project Management Unit
CONTROL STATION DATA SHEET

Approximate Location: Northside School (off Barton Dr.)



STATION 1017 IS LOCATED AT THE ENTRANCE TO NORTHSIDE SCHOOL (OFF BARTON DRIVE), SAID STATION BEING IN THE NORTHWEST 1/4 OF SECTION 21, ANN ARBOR TOWNSHIP IN THE CITY OF ANN ARBOR, MICHIGAN. THE STATION IS LOCATED 2.3' SOUTH OF THE FLAGPOLE AND 7.8' EAST OF THE EAST EDGE OF THE NORTH-SOUTH CONCRETE WALK TO THE MAIN ENTRANCE. SAID STATION IS A VERTICAL CONTROL STATION AND IS DESCRIBED AS THE 1972 EDITION OF THE CITY OF ANN ARBOR BRASS DISC, SET IN CONCRETE PER DETAIL III AND IS FLUSH WITH THE GROUND. THE STATION WAS SET BY THE CITY OF ANN ARBOR IN 1972.

Benchmark

Vertical

| | |
|---------------------------------|--------------------|
| Accuracy | 2nd Order Class II |
| Datum | NAVD 88 |
| Elevation in meters | 261.042 |
| Elevation in International feet | 856.44 |

No. 1017
 Sector: NW