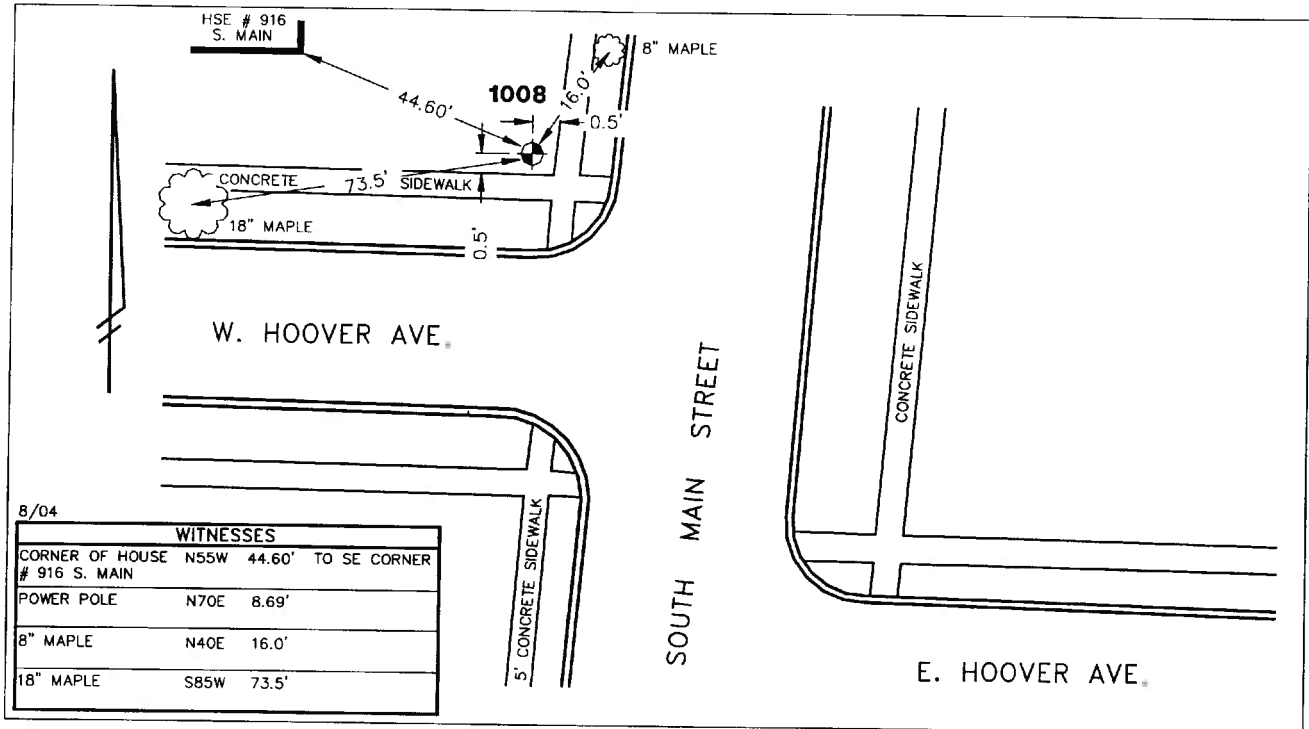


**City of Ann Arbor
Public Services Area • Project Management Unit
CONTROL STATION DATA SHEET**

Approximate Location: S. Main St. at W. Hoover Ave.



STATION 1008 IS LOCATED AT THE NORTHWEST CORNER OF SOUTH MAIN STREET AND WEST HOOVER AVENUE, SAID STATION BEING IN THE NORTHWEST 1/4 OF SECTION 32, ANN ARBOR TOWNSHIP IN THE CITY OF ANN ARBOR, MICHIGAN. THE STATION IS LOCATED 0.5' WEST OF THE WEST EDGE OF THE 5.0' CONCRETE WALK ALONG THE WEST SIDE OF SOUTH MAIN STREET AND 0.5' NORTH OF THE NORTH EDGE OF THE 5.0' CONCRETE WALK ALONG THE NORTH SIDE OF WEST HOOVER AVENUE. SAID STATION IS A VERTICAL CONTROL STATION AND IS DESCRIBED AS THE 1972 EDITION OF THE CITY OF ANN ARBOR BRASS DISC, SET IN CONCRETE PER DETAIL III AND IS FLUSH WITH THE GROUND. THIS STATION WAS SET BY THE CITY OF ANN ARBOR IN 1972.

Benchmark

	Vertical	
Accuracy		2nd Order Class II
Datum		NAVD 88
Elevation in meters		264.300
Elevation in International feet		867.12

**No. 1008
Sector: WC**