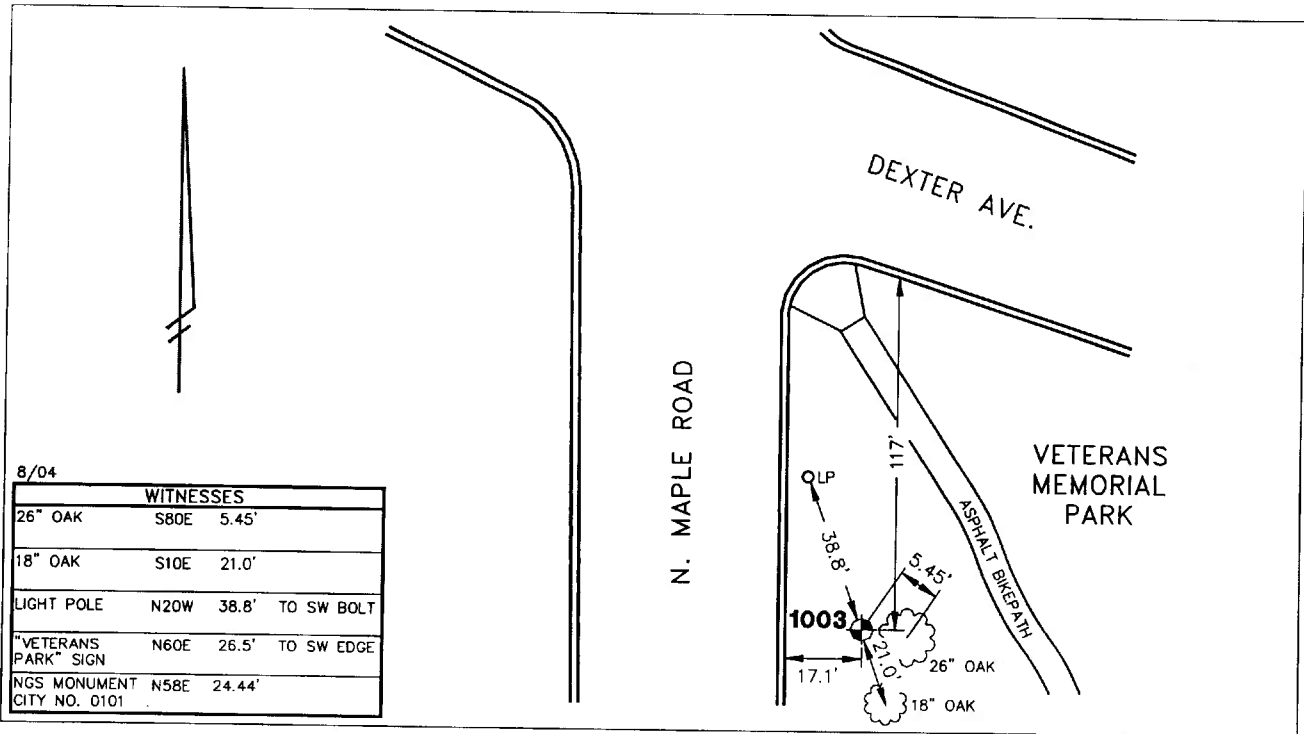


City of Ann Arbor
 Public Services Area • Project Management Unit
CONTROL STATION DATA SHEET

Approximate Location: Veterans Memorial Park



8/04

WITNESSES	
26" OAK	S80E 5.45'
18" OAK	S10E 21.0'
LIGHT POLE	N20W 38.8' TO SW BOLT
"VETERANS PARK" SIGN	N60E 26.5' TO SW EDGE
NGS MONUMENT CITY NO. 0101	N58E 24.44'

STATION 1003 IS LOCATED IN THE NORTHWEST CORNER OF VETERANS MEMORIAL PARK ON NORTH MAPLE ROAD AT DEXTER AVENUE, SAID STATION BEING IN THE NORTHWEST 1/4 OF SECTION 30, ANN ARBOR TOWNSHIP IN THE CITY OF ANN ARBOR, MICHIGAN. THE STATION IS LOCATED 117' SOUTH OF THE SOUTH BACK OF CURB ALONG DEXTER AVENUE AND 17.1' EAST OF THE EAST BACK OF CURB ALONG THE EAST SIDE OF NORTH MAPLE ROAD. SAID STATION IS A VERTICAL CONTROL STATION AND IS DESCRIBED AS THE 1972 EDITION OF THE CITY OF ANN ARBOR BRASS DISC, SET IN CONCRETE PER DETAIL III AND IS FLUSH WITH THE GROUND. THIS STATION WAS SET BY THE CITY OF ANN ARBOR IN 1972.

Benchmark

Vertical

Accuracy	2nd Order Class II
Datum	NAVD 88
Elevation in meters	283.717
Elevation in International feet	930.83

No. 1003
 Sector: WC