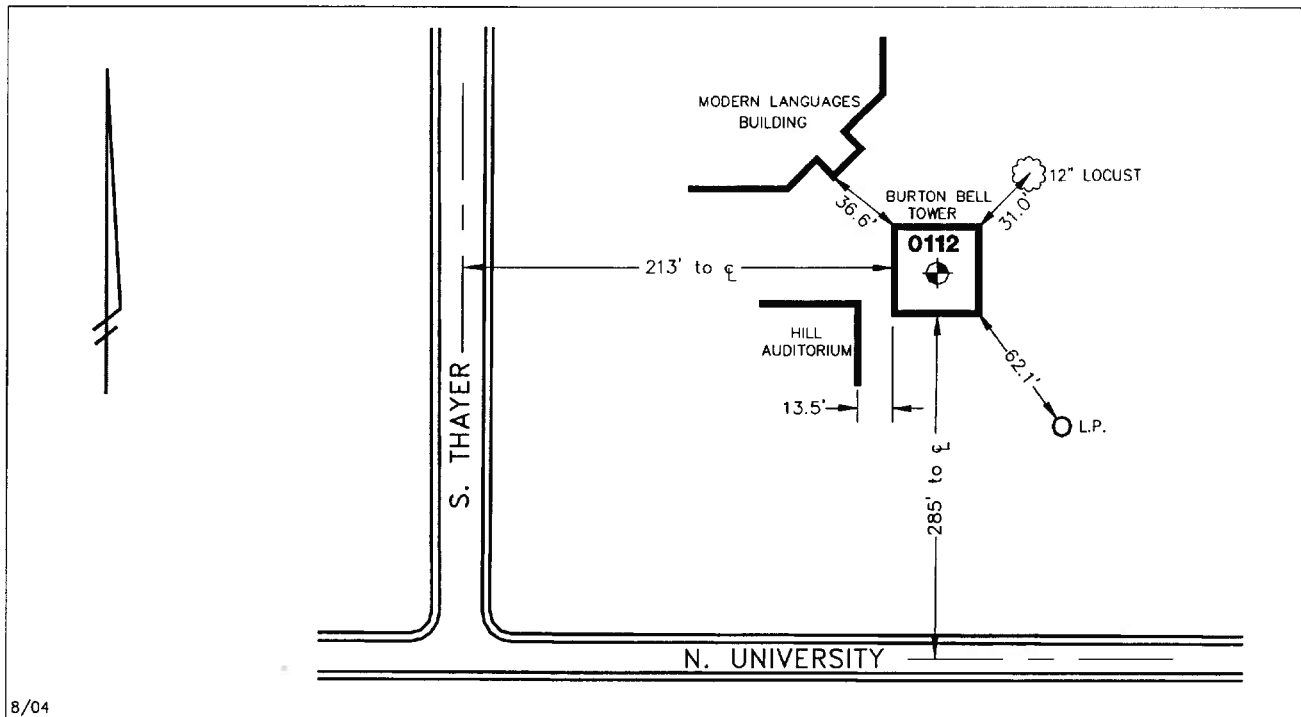


City of Ann Arbor
Public Services Department • Engineering Division
CONTROL STATION DATA SHEET

Approximate Location: Burton Tower



8/04

STATION 0112 IS LOCATED AT BURTON BELL TOWER, NORTH OF NORTH UNIVERSITY AVENUE AND EAST OF SOUTH THAYER STREET, ON THE GROUNDS OF THE UNIVERSITY OF MICHIGAN, SAID STATION BEING IN THE NORTHWEST 1/4 OF SECTION 28, ANN ARBOR TOWNSHIP IN THE CITY OF ANN ARBOR, MICHIGAN. THE STATION IS DESCRIBED AS THE APEX OF THE ROOF OF THE 190' HIGH TOWER WITH 15' ANTENNA ON TOP. SAID STATION IS A HORIZONTAL POSITION, ESTABLISHED BY THE COAST AND GEODETIC SURVEY IN 1943 AND ADJUSTED BY THE NATIONAL GEODETIC SURVEY IN 1985 WITH THE DESIGNATION: ANN ARBOR BURTON MEMORIAL. CLOCK TWR., AND PID: NE1463.

Horizontal

Latitude (dms)	N 42 16 45.97586
Longitude (dms)	W 83 44 19.33981
State Plane Zone	2113 MI South
Scale	0.99996235
Geoid Height in meters	-33.91
Convergence (dms)	0 25 38.4
Accuracy	3rd Order
Datum	NAD 83
Easting (X) in meters	4051796.386
Northing (Y) in meters	86771.745
Easting (X) in International feet	13293295.230
Northing (Y) in International feet	284684.203

No. 0112
Sector: WC