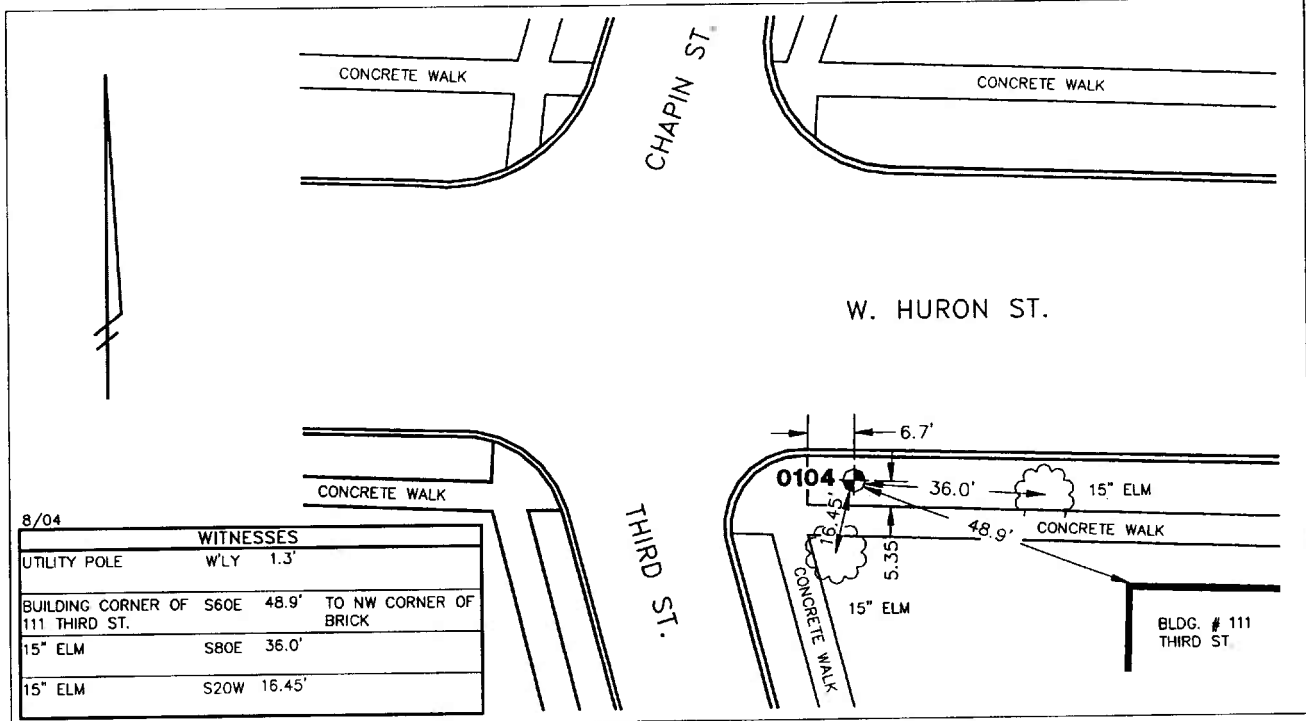


Public Services Area • Project Management Unit
CONTROL STATION DATA SHEET

Approximate Location: W. Huron St. and Third St.



STATION 0104 IS LOCATED AT THE SOUTHEAST CORNER OF WEST HURON STREET AND THIRD STREET, SAID STATION BEING IN THE NORTHWEST 1/4 OF SECTION 29, ANN ARBOR TOWNSHIP IN THE CITY OF ANN ARBOR, MICHIGAN. THE STATION IS LOCATED 5.35' NORTH OF THE NORTH EDGE OF THE 5' CONCRETE WALK ALONG THE SOUTH SIDE OF WEST HURON STREET AND 6.7' EAST OF THE EAST EDGE OF THE 5' CONCRETE RAMP ALONG THE EAST SIDE OF THIRD STREET. SAID STATION IS A VERTICAL CONTROL STATION AND IS DESCRIBED AS A STAINLESS STEEL ROD WITHOUT SLEEVE AND IS ACCESSED BY A 5" LOGO CAP AND STAMPED: N 331 1985. THIS STATION IS A NATIONAL GEODETIC SURVEY STATION, WITH THE DESIGNATION: N 331, AND PID: NE1047.

Benchmark

Vertical

Accuracy	1st Order Class II
Datum	NAVD 88
Elevation in meters	243.853
Elevation in International feet	800.04

No. 0104
 Sector: WC