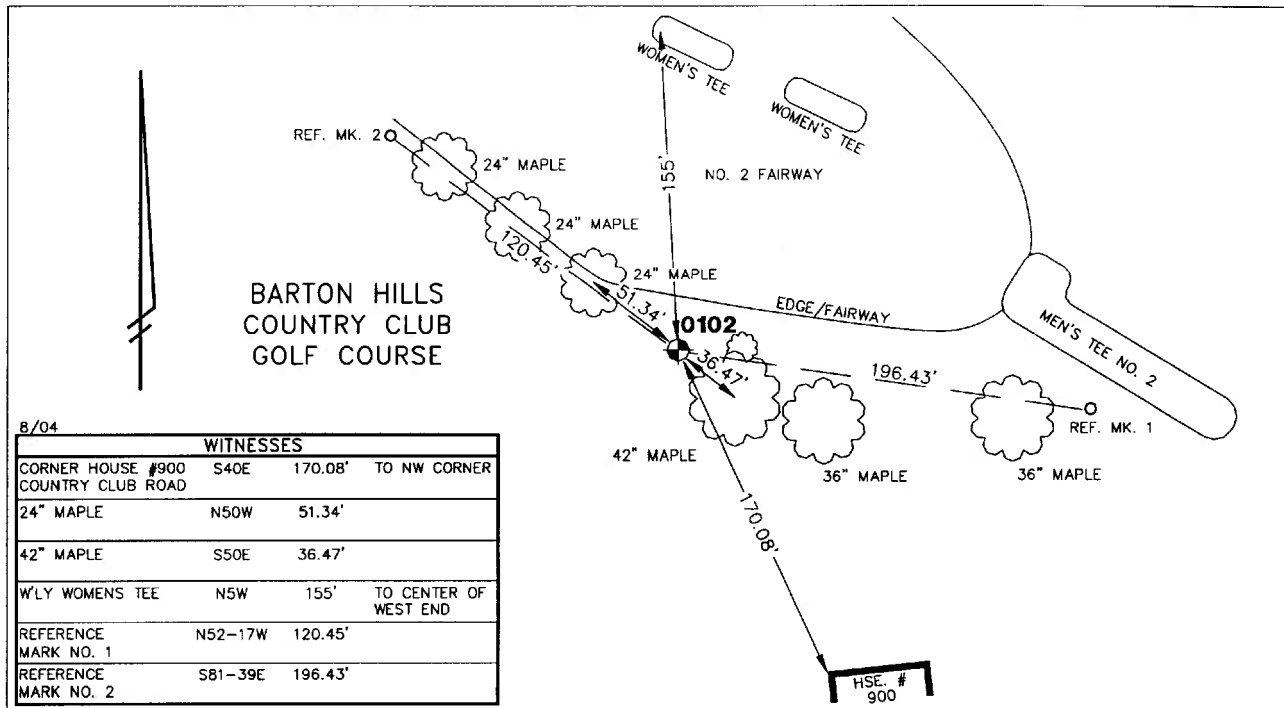


City of Ann Arbor  
 Public Services Department • Engineering Division  
**CONTROL STATION DATA SHEET**

Approximate Location: Barton Hills Country Club Golf Course



8/04

WITNESSES			
CORNER HOUSE #900 COUNTRY CLUB ROAD	S40E	170.08'	TO NW CORNER
24" MAPLE	N50W	51.34'	
42" MAPLE	S50E	36.47'	
W'LY WOMENS TEE	N5W	155'	TO CENTER OF WEST END
REFERENCE MARK NO. 1	N52-17W	120.45'	
REFERENCE MARK NO. 2	S81-39E	196.43'	

STATION 0102 IS LOCATED ON THE BARTON HILLS COUNTRY CLUB GOLF COURSE, SAID STATION BEING IN SECTION 7 OF ANN ARBOR TOWNSHIP, MICHIGAN. THE STATION IS LOCATED ON THE SOUTHERLY SIDE OF THE NUMBER 2 FAIRWAY, 30' SOUTH OF THE SOUTH EDGE OF THE FAIRWAY OPPOSITE THE WESTERLY MOST OF THE TWO WOMEN'S TEES, 170.08' NORTHWEST OF THE NORTHWEST CORNER OF HOUSE NO. 900 COUNTRY CLUB ROAD AND 51.34' SOUTHEAST OF THE SOUTHEASTERLY MOST TREE OF THE LINE OF 24" MAPLE TREES ALONG THE SOUTHERLY EDGE OF THE FAIRWAY. SAID STATION IS A HORIZONTAL CONTROL STATION AND IS DESCRIBED AS A U.S. COAST AND GEODETIC SURVEY DISC, STAMPED: "BARTON 1932", SET IN CONCRETE 0.5' ABOVE THE FINISHED GRADE OF THE GROUND. THIS IS A NATIONAL GEODETIC SURVEY STATION WITH THE DESIGNATION: "BARTON", AND PID: NE1495.

**Horizontal**

Latitude (dms)	N 42 19 26.68220
Longitude (dms)	W 83 46 11.88963
State Plane Zone	2113 MI South
Scale	0.99995448
Geoid Height in meters	-33.74
Convergence (dms)	0 24 21.9
Accuracy	1st Order
Datum	NAD 83
Easting (X) in meters	4049182.541
Northing (Y) in meters	91711.304
Easting (X) in International feet	13284719.623
Northing (Y) in International feet	300890.105

No. 0102  
 Sector: NW