



## Commercial Advisory Committee Comprehensive Organics Management Plan Meeting #1 - August 10, 2016



CB&I Environmental & Infrastructure, Inc.

In association with:



# 1. What is Organics Management?

- 2. City of Ann Arbor Organics Management Background / History
- 3. Project Overview and Implementation



# Materials Included in “Organics”

- “Organic”: of, relating to, or derived from living matter
  
- Particular materials of focus for the Organics Management Plan:
  - Yard wastes
    - Grass clippings
    - Tree and bush trimmings
  - Wood
    - Tree limbs and stumps
    - Non-treated lumber
  - Food scraps
    - Food production wastes
    - Food preparation wastes
    - Spoiled/expired food
    - Plate scrapings
  - Fats, oils, and grease (“FOG”) from cooking



### At home:

- Yard maintenance / landscaping
- Food preparation
- Spoiled or expired food
- Plate scrapings



### Primary generators of food wastes:

- Residential properties
- Restaurants
- Grocery stores
- Hospitals

### Away from home:

- Property maintenance / landscaping
- Food preparation
- Spoiled or expired food
- Plate scrapings
- Food production and distribution



- Schools
- Institutions
- Food banks / pantries



# Steps in Organics Management

## City of Ann Arbor Comprehensive Organics Management Plan



Segregation



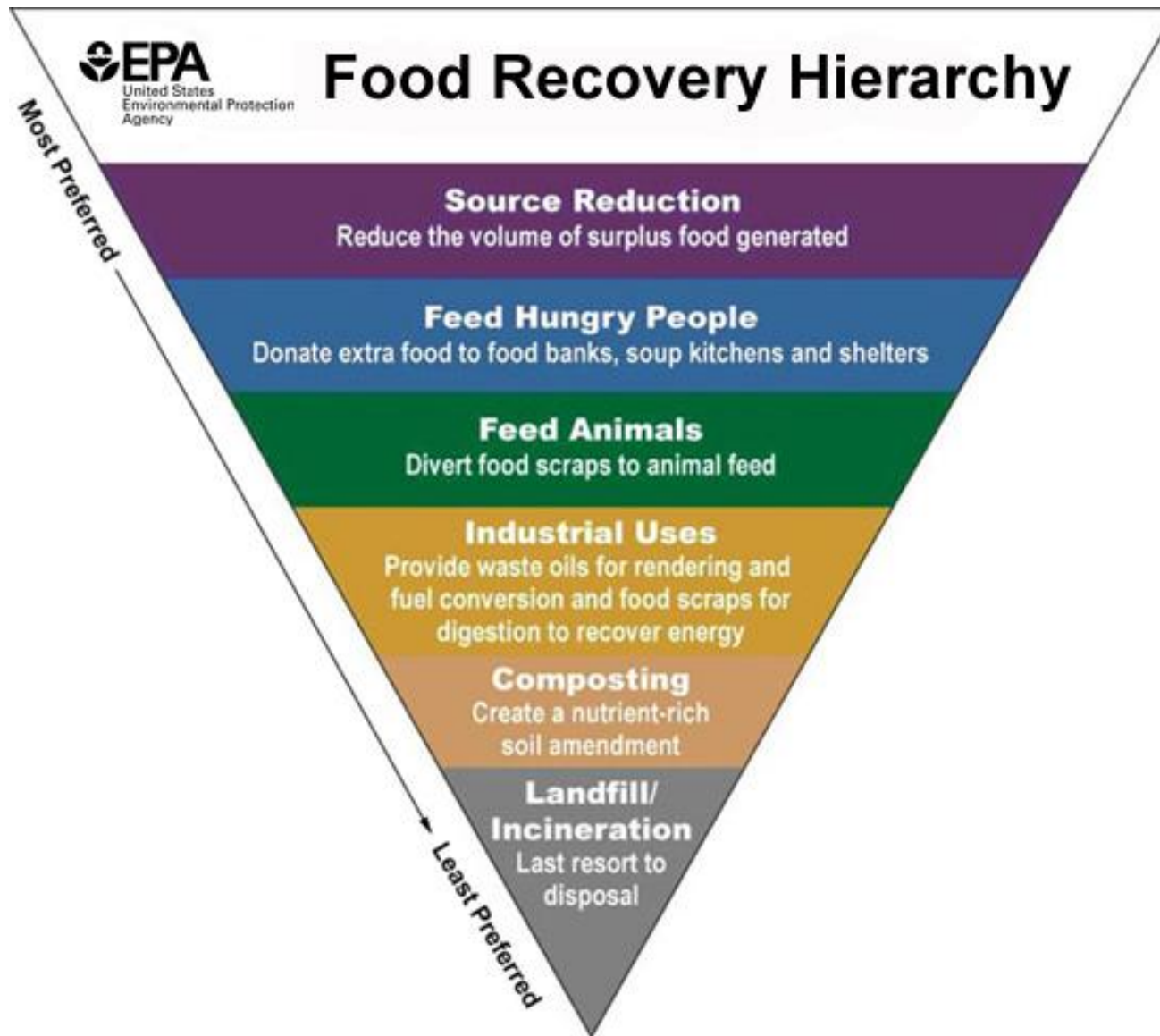
Processing



Collection



Marketing /  
sale of  
finished  
products



1. What is Organics Management?



## 2. City of Ann Arbor Organics Management Background / History



3. Project Overview and Implementation



# Ann Arbor Organics Program Timeline

**1995**

Landscape waste ban implemented in Michigan

**2009**

Residential vegetative food waste added to compost collection

**2011**

WeCare Organics begins operating compost facility

**2008**

Compost carts offered for sale for automated collection

**2010**

Leaf collection added to seasonal compost collection (no more street collection)

**2014**

Residential plate scrapings added to compost collection



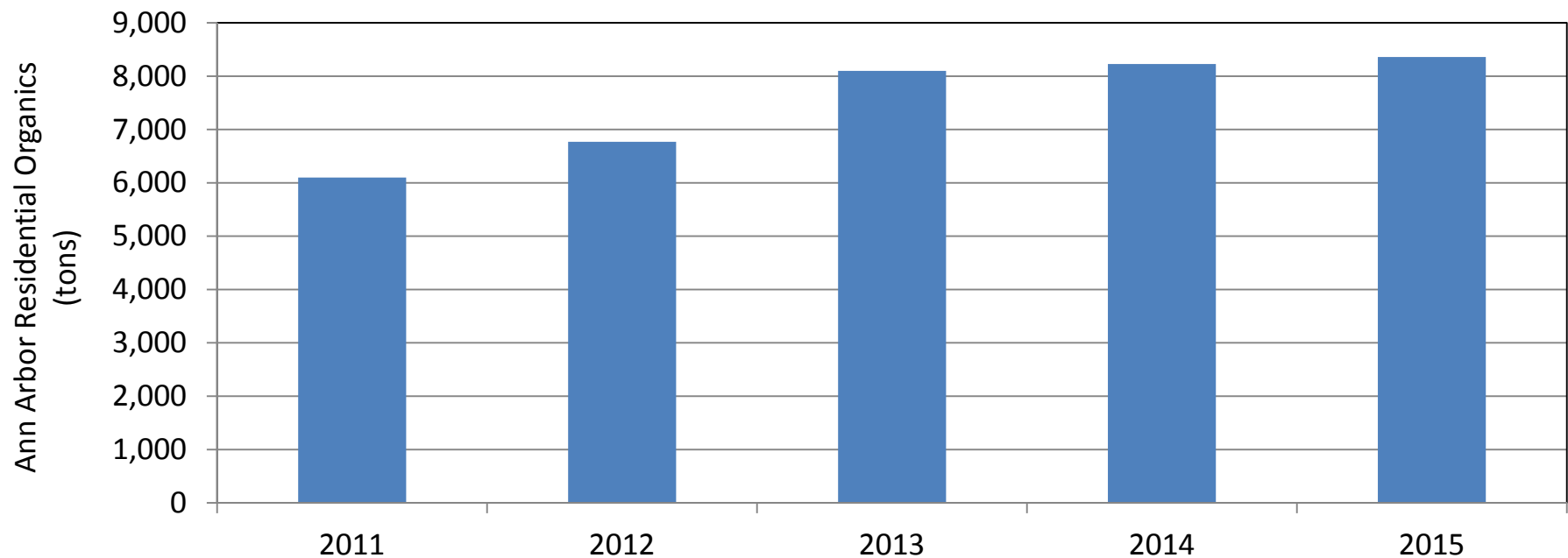
- Customers served
  - Single family and multi-family properties
- Collection provided by City of Ann Arbor
  - Seasonal (April through November)
  - 30-gallon kraft paper bags
  - City-provided compost carts
  - Bundled branches / brush
- Materials collected
  - Plate scrapings\*
  - Bamboo dinnerware\*
  - Grass clippings\*
  - Leaves
  - Garden prunings / surplus
  - Unpainted, untreated lumber
  - Brush



- Weeds
- Tree branches (up to 6" diameter and 4 feet in length)
- Pumpkins
- Christmas trees (cut up)

# Organics Program Performance

## City of Ann Arbor Comprehensive Organics Management Plan



- Organic materials are a significant fraction of the disposed waste stream (20-30% or more, by weight)
- City / WeCare estimate 1,000-1,500 tons of food wastes are collected now from Ann Arbor residents
- Compost is sold by WeCare to wholesale outlets and residents

1. What is Organics Management?
2. City of Ann Arbor Organics Management Background / History
- 3. Project Overview and Implementation**



- Document review - historical context
- Community engagement - stakeholders and public input
  - Interviews
  - Advisory Committees (Residential and Commercial)
  - Random telephone survey of residents
- Opportunities analysis - how much material is available?
- Logistics and resource needs - how can we collect and process it?
- Implementation strategy / recommendations
- Presentation of findings to Environmental Commission and City Council





- Started work in April 2016
- Advisory Committees will meet every other month
  - Residential: July, September, November, January (2017)
  - Commercial: August, October, December, January (2017)
- Resident survey - projected to be executed in September
- Research and analysis underway now
- Projected presentations:
  - Environmental Commission - February/March 2017
  - City Council - April 2017

# Questions to be Addressed by the Plan

## City of Ann Arbor Comprehensive Organics Management Plan

- Can organics collection be provided year-round?
- How much capacity does the compost facility have for added food waste?
- What are the costs?
- Who will provide services (collection, processing)?
- What are the logistical issues?
- Will the community and businesses be broadly accepting?
- Do residents support expanded collection? (public opinion survey)
- What is the timing of rolling out a new program or a pilot program?
- Is there support from staff and elected officials?
- What materials should be included (pre-consumer, post-consumer, compostable serviceware)?

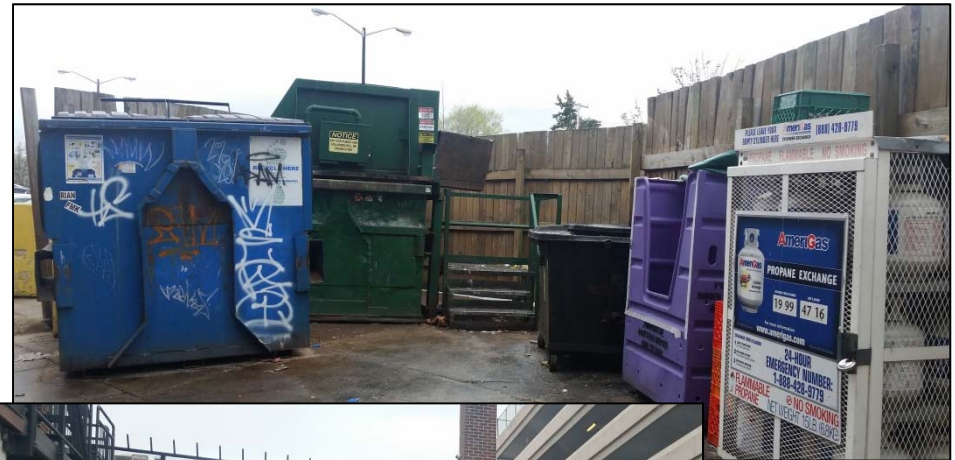


# Challenges to Consider in Planning Process

## City of Ann Arbor Comprehensive Organics Management Plan



- Space and logistics
- Behaviors and attitudes
- Property ownership
- Mixed use properties / areas
- Education and communication
- Enforcement
- Sanitation



- Share individual experiences
- Identify priorities and principal requests
- Provide feedback on alternatives discussed
- Provide connections to other stakeholders - spread the word to maximize feedback and participation
- Not reaching group consensus on a single approach or shaping a final recommendation to council - informing and discussing only



**For a copy of this presentation and other  
project updates, visit the project site:**

**[www.a2gov.org/organicsplan](http://www.a2gov.org/organicsplan)**