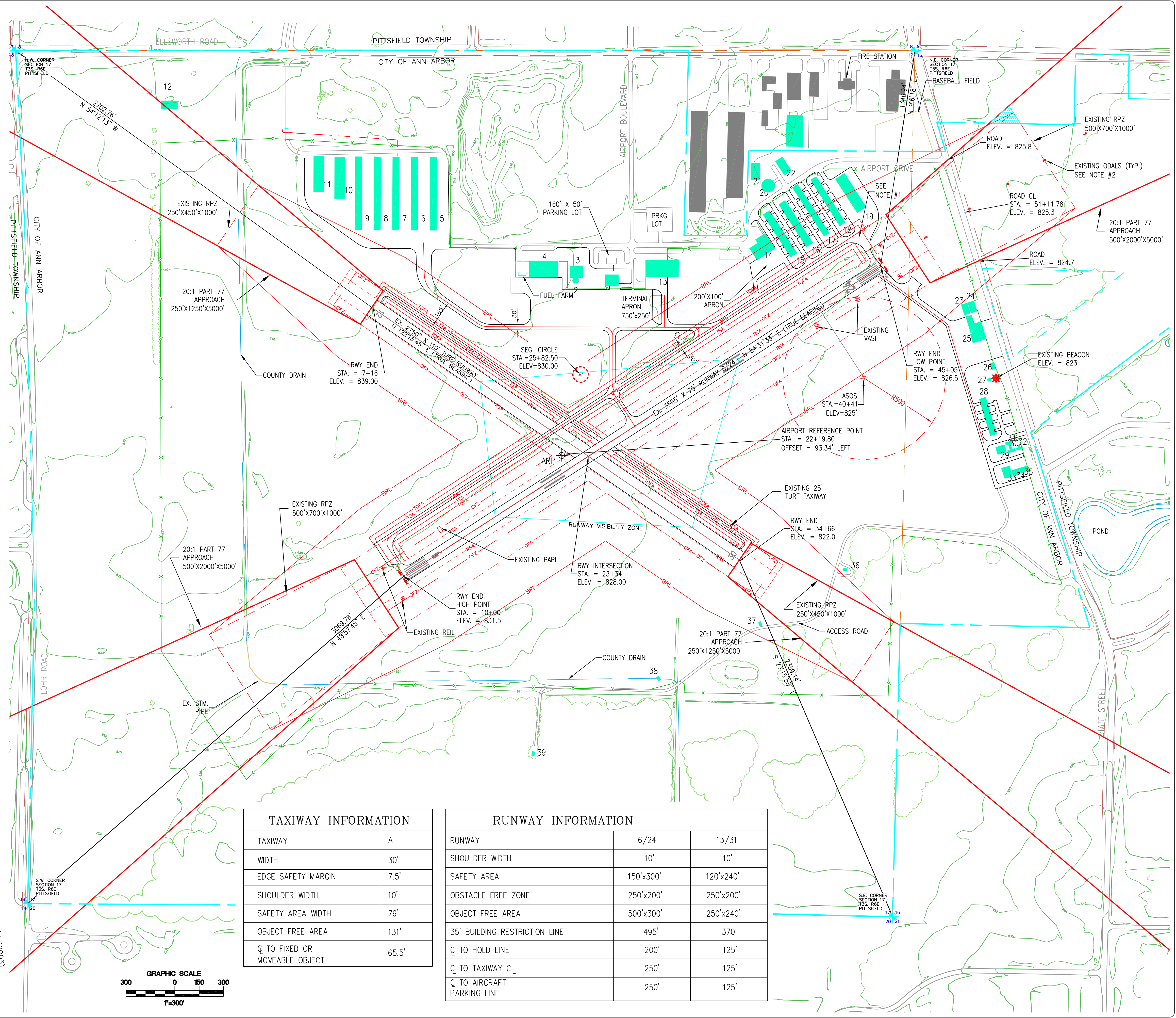

Appendix B – Airport Layout Plan

BUILDING ELEVATION TABLE		
NO.	DESCRIPTION	ELEVATION
1	ADMINISTRATION/TERMINAL BUILDING	849.56
2	AIR TRAFFIC CONTROL TOWER (ATCT)	893.29
3	AIR TRAFFIC ADMINISTRATION BUILDING	864.52
4	CORPORATE HANGAR (AV. GAS CO.)	866.72
5	T-HANGAR	858.03
6	T-HANGAR	857.98
7	T-HANGAR	857.12
8	T-HANGAR	857.95
9	T-HANGAR	858.01
10	T-HANGAR (NESTED)	863.58
11	T-HANGAR (NESTED)	863.56
12	BARN	894.80
13	CORPORATE HANGAR (MICHIGAN UNIVERSITY)	861.57
14	FIXED BASE OPERATION HANGAR	862.57
15	T-HANGAR	846.73
16	T-HANGAR	846.47
17	T-HANGAR	843.65
18	T-HANGAR	846.30
19	T-HANGAR (NESTED)	849.13
20	ROTATING FLOOR HANGAR	850.89
21	CONVENTIONAL HANGAR	851.15
22	CONVENTIONAL HANGAR	847.51
23	CONVENTIONAL HANGAR	838.92
24	CONVENTIONAL HANGAR	838.87
25	FIXED BASE OPERATION HANGAR	846.03
26	OFFICE BUILDING	837.91
27	CITY WATER FACILITY	823.35
28	T-HANGAR	836.39
29	CONVENTIONAL HANGAR	842.77
30	T-HANGAR	834.98
31	T-HANGAR	835.85
32	T-HANGAR	836.80
33	CONVENTIONAL HANGAR	843.80
34	CONVENTIONAL HANGAR	842.34
35	CONVENTIONAL HANGAR	841.81
36	CITY WATER FACILITY	837.20
37	CITY WATER FACILITY	837.60
38	CITY WATER FACILITY	834.09
39	CITY WATER FACILITY	836.12

LEGEND	
AIRPORT PROPERTY LINE	— BM —
EASEMENT	— CORNER —
SECTION LINES	— CORNER —
RUNWAYS, PARKING, TAXIWAYS	—
FU. RUNWAYS, PARKING, TAXIWAYS	—
RWY PROTECTION ZONES	—
EXISTING BUILDINGS	EX-BUILD
FUTURE BUILDINGS	FU-BUILD
ROADS	—
FUTURE AIRPORT PROPERTY LINE	—
CENTERLINES	—
EX. RUNWAY SAFETY AREA	— RSA —
EX. TAXIWAY SAFETY AREA	— TSA —
EX. OBJECT FREE AREA	— OFA —
EX. OBJECT FREE ZONE	— OFZ —
EX. TAXIWAY OBJECT FREE AREA	— TOFA —
EX. BUILDING RESTRICTION LINE	— BRL —
EXISTING TREES AND TREE LINES	TREE TREELIN
EXISTING FENCE LINE	— REIL —
EX. VASI OR PAPI	— VASI / PAPI —
EX. SEGMENTED CIRCLE	— SEG —
EXISTING POWER & TELEPHONE LINE	— PP — F-PP —
RUNWAY VISIBILITY ZONE	—

NOTE #1
TWO T-HANGARS IN NORTHEAST CORNER OF AIRPORT AND NORTHEAST FBO HANGAR OBSCURE LINE OF SITE TO END OF PARALLEL TAXIWAY

NOTE #2
OADLS - OMNIDIRECTIONAL APPROACH LIGHTING SYSTEM



TAXIWAY INFORMATION	
TAXIWAY	A
WIDTH	30'
EDGE SAFETY MARGIN	7.5'
SHOULDER WIDTH	10'
SAFETY AREA WIDTH	79'
OBJECT FREE AREA	131'
CL TO FIXED OR MOVEABLE OBJECT	65.5'

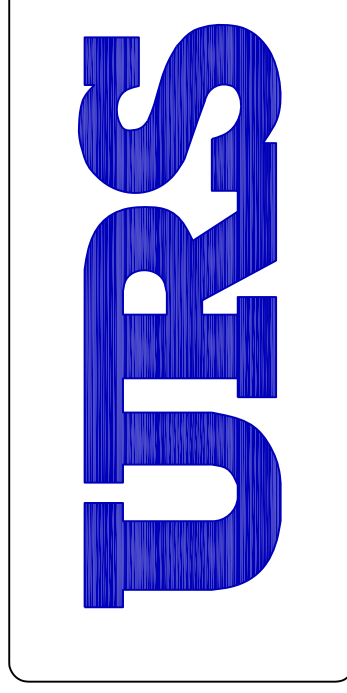
RUNWAY INFORMATION		
RUNWAY	6/24	13/31
SHOULDER WIDTH	10'	10'
SAFETY AREA	150'x300'	120'x240'
OBJECT FREE ZONE	250'x200'	250'x200'
OBJECT FREE AREA	500'x300'	250'x240'
35' BUILDING RESTRICTION LINE	495'	370'
CL TO HOLD LINE	200'	125'
CL TO TAXIWAY CL	250'	125'
CL TO AIRCRAFT PARKING LINE	250'	125'

M:\Projects\12940723\CADD\VPDS\81-035\81035.dwg
 info-... \cadd\info1.dwg
 info2-... \cadd\info2.dwg
 BASE=... \cadd\base.dwg
 12/11/2008 1:33 pm
 MAC DEC = -628'N (2003)

DATE	ISSUED FOR
06/27/08	A/P PUBLICATION
03/21/08	F/A AIRSPACE REVIEW
12/17/07	MOOT EMAT REVIEW

D/E	JW	X	PM	RC	X	SOC	DR	X	OC	WM	X

W. MALINOWSKI
 IN CHARGE



ANN ARBOR, MICHIGAN

ANN ARBOR MUNICIPAL AIRPORT
 AIRPORT LAYOUT PLAN
 AIRPORT LAYOUT PLAN (EXISTING)

SITE NO.
81-1

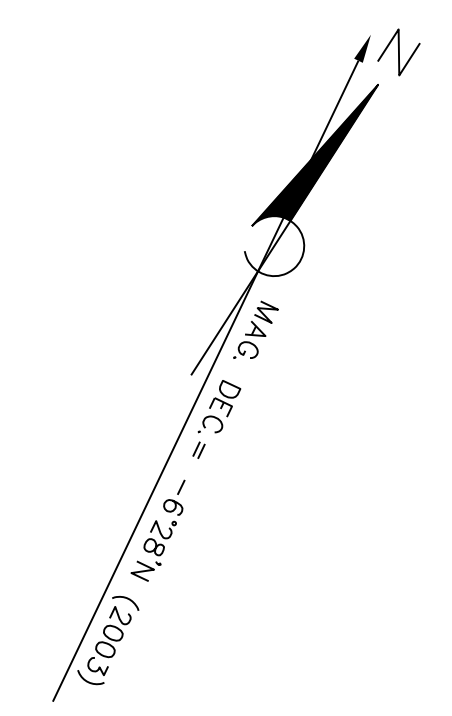
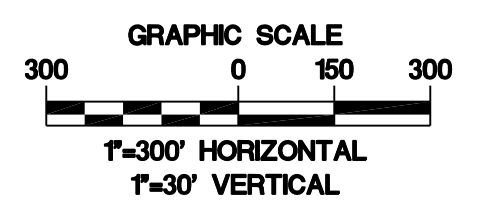
DRAWING
3 OF 10

12940723

- LEGEND**
- AIRPORT PROPERTY LINE
 - SECTION LINES
 - RUNWAYS, PARKING, TAXIWAYS
 - FU, RUNWAYS, PARKING, TAXIWAYS
 - RWY PROTECTION ZONES
 - PROPERTY LIMITS
 - AVIGATION EASEMENT
 - SPOT ELEVATIONS
 - EXISTING BUILDINGS
 - FUTURE BUILDINGS
 - ROADS
 - UTILITY EASEMENT
 - FUTURE AIRPORT PROPERTY LINE
 - FUTURE EASEMENT
 - CENTERLINES
 - EX. RUNWAY SAFETY AREA
 - EX. TAXIWAY SAFETY AREA
 - EX. OBJECT FREE AREA
 - EX. TAXIWAY OBJECT FREE AREA
 - EX. BUILDING RESTRICTION LINE
 - EXISTING TREES AND TREE LINES
 - EXISTING FENCE LINE
 - EX. REIL
 - EX. VASI OR PAPI
 - EX. SEGMENTED CIRCLE
 - FUTURE ROADS
 - FUT. TAXIWAY SAFETY AREA
 - FUT. TAXIWAY OBJECT FREE AREA
 - FUTURE RWY PROTECTION ZONES
 - FUT. RUNWAY SAFETY AREA
 - FUT. OBJECT FREE AREA
 - FUTURE CENTERLINES
 - EXISTING POWER & TELEPHONE LINE
 - FUT. FENCE

OBSTRUCTION TABLE									
NO	TYPE	TOP ELEV	MAX. ELEV.		PENETRATION		PROPOSED DISPOSITION		
			EX.	FUT.	EX.	FUT.			
1	TREES	904	862'	**	862'	**	22'	42'	REMOVE
2	TREES	880'	900'	**	868'	**		12'	REMOVE
3	TREES	912'	933'	**	900'	**		12'	REMOVE
4	TREES	890'	896'	**	867'	**		23'	REMOVE
5	TREES	885'	900'	**	874'	**		11'	REMOVE
6	TREES	890'	902'	**	870'	**		20'	REMOVE

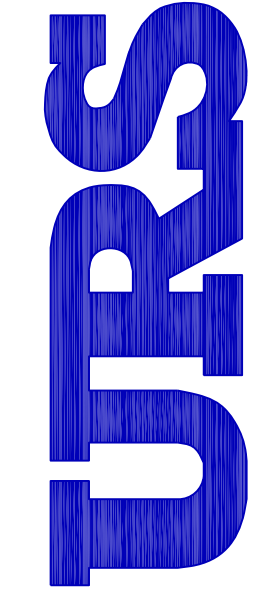
** IN SIDE OR TRANSITIONAL SLOPE



DATE	ISSUED FOR

D/E	JW	X
PM	RC	X
SOC	DR	X
OC	MM	X
IN	CHARGE	

GRAND SERVICES, INC.
3800 PARKS DR., S.W.
616 574-8800



ANN ARBOR, MICHIGAN

ANN ARBOR MUNICIPAL AIRPORT

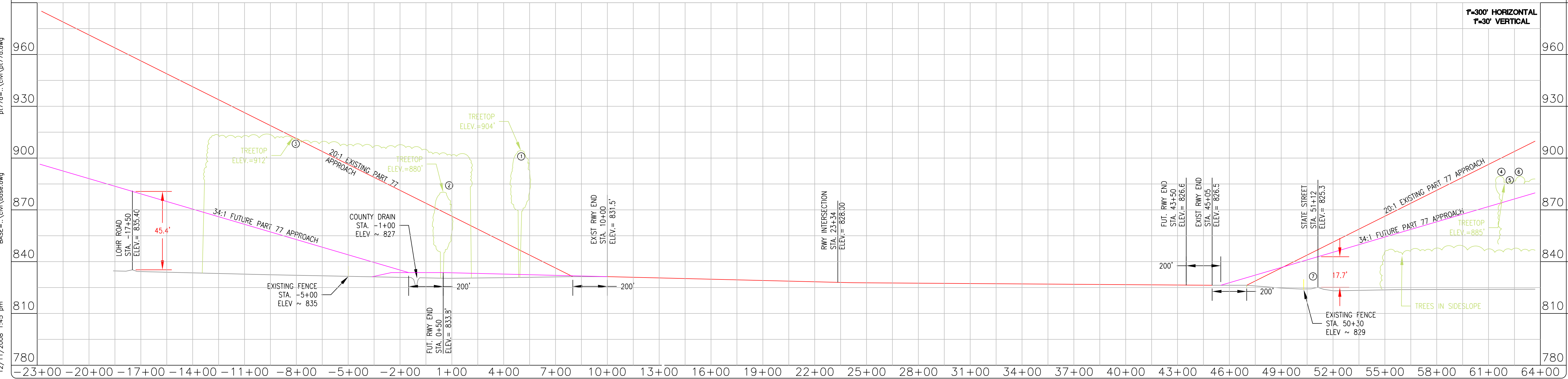
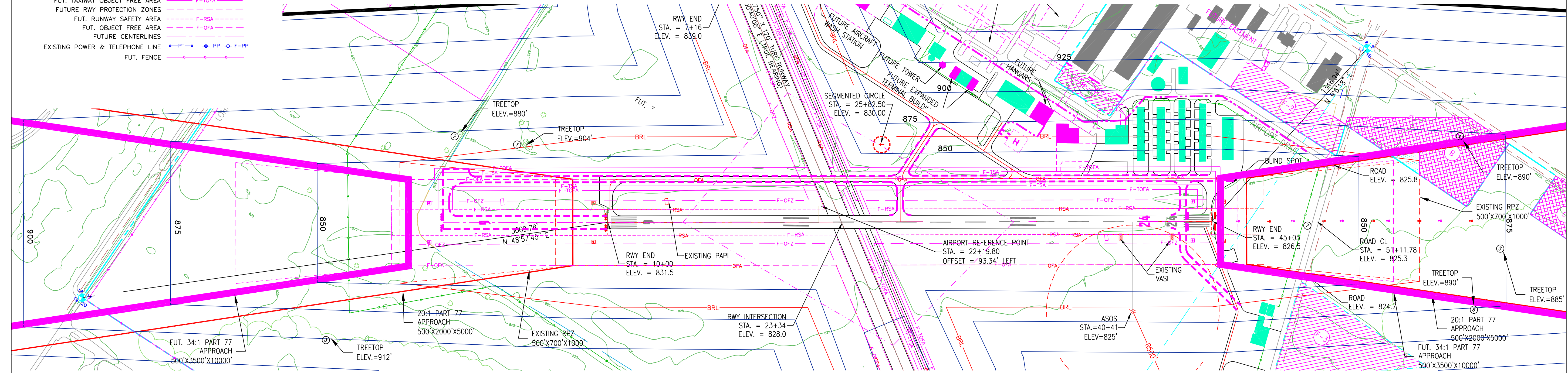
AIRPORT LAYOUT PLAN
RUNWAY APPROACH ZONE DRAWING (RWY 6/24)

SITE NO.
81-1

DRAWING
6 OF 10


12940723

M:\Projects\12940723\CADD\VPDS\81-1\DWG\APZ\APZ.dwg
12/11/2008 1:45 pm
BSE... \civ\lase.dwg
PRP... \civ\lase.dwg
app-6-24... \civ\lase.dwg
p177... \civ\lase.dwg
GR34... \civ\lase.dwg
FUT2... \civ\lase.dwg



D/E	JW	X
PM	RJC	X
SOC	DR	X
OC	WMM	X
IN CHARGE	W. MALINOWSKI	
DATE	12/17/07	
ISSUED FOR		

GRAND PLAINS, MI
3850 PARKS DR., S.W.
616 574-8800

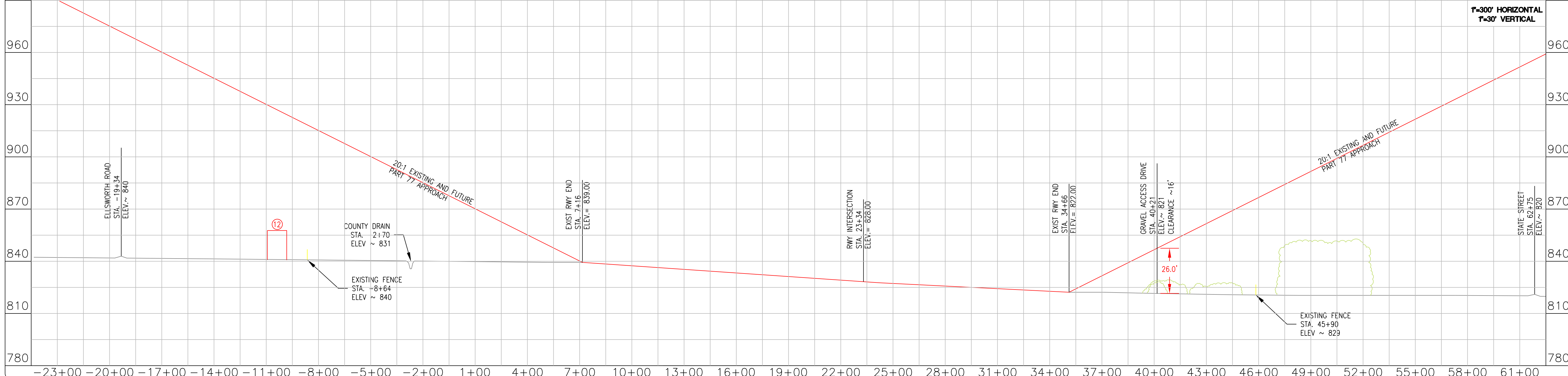
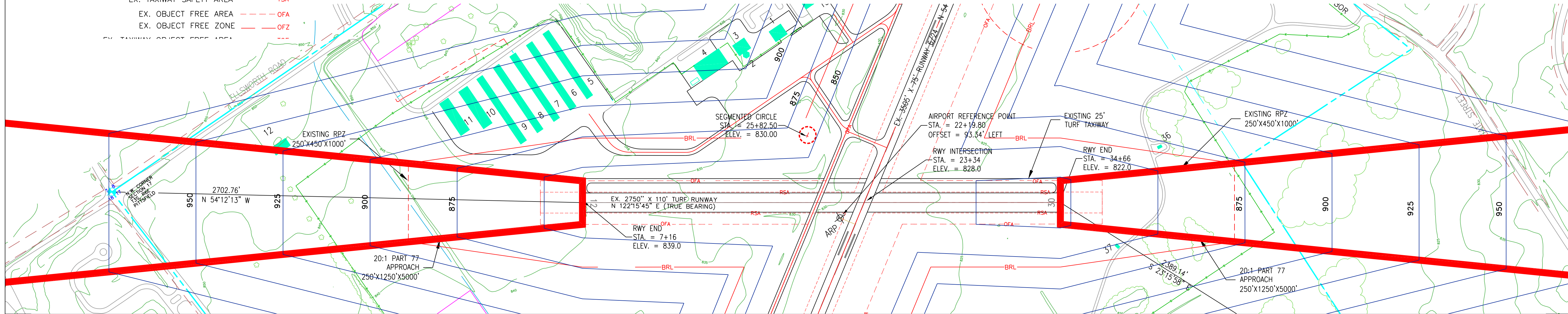
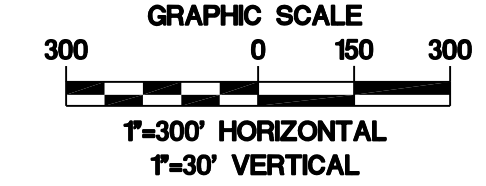
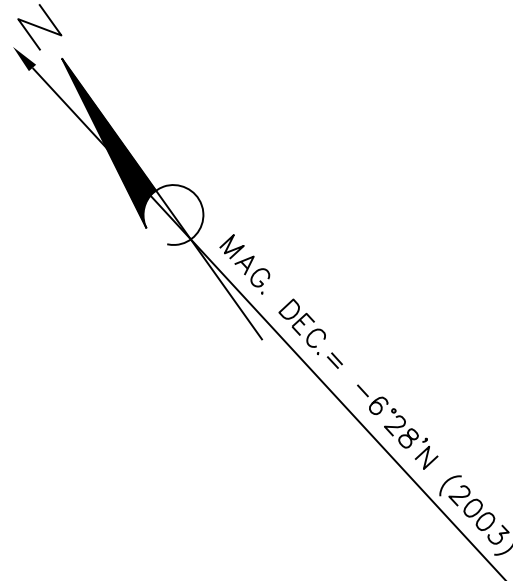


ANN ARBOR MUNICIPAL AIRPORT
ANN ARBOR, MICHIGAN
AIRPORT LAYOUT PLAN
RUNWAY APPROACH ZONE DRAWING (RWY 13/31)

SITE NO.	81-1
DRAWING	7 OF 10
12940723	

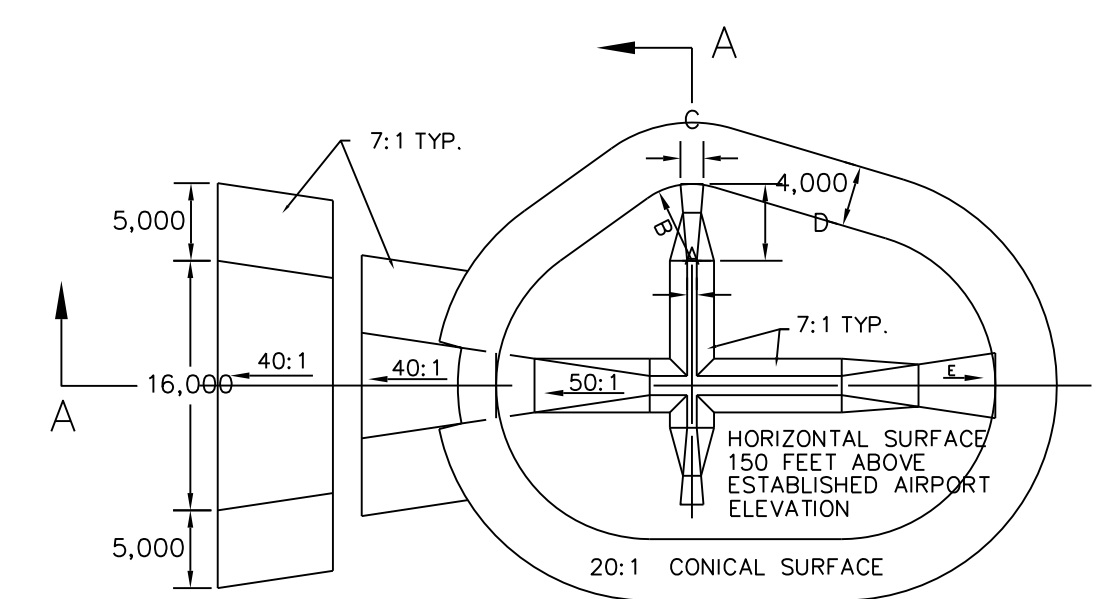
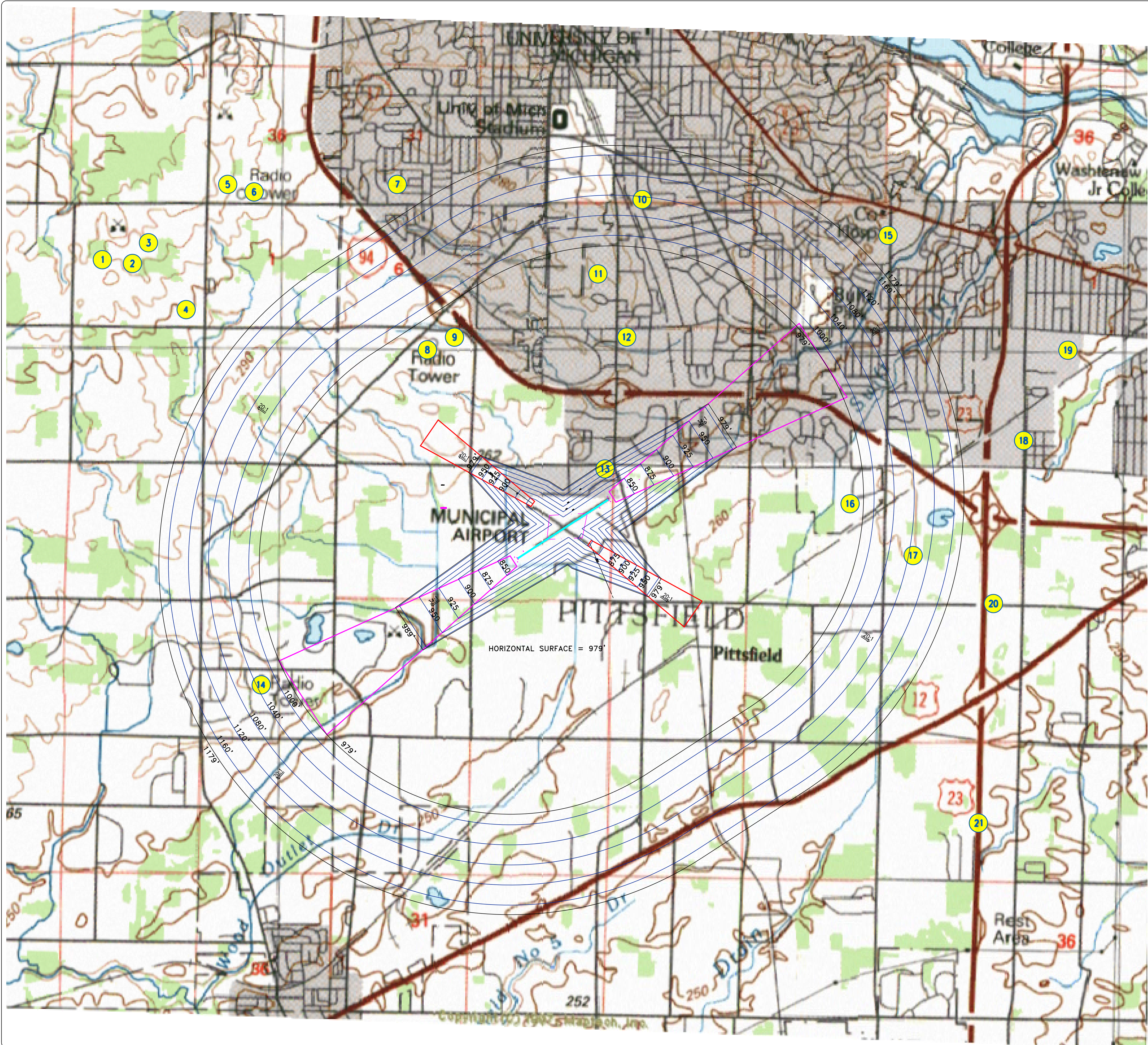
NOTE:
RWY 13/31 APPROACHES WERE SURVEYED IN 2003, NO OBSTRUCTIONS OBSERVED.

- LEGEND**
- AIRPORT PROPERTY LINE
 - EASEMENT
 - SECTION LINES
 - RUNWAYS, PARKING, TAXIWAYS
 - FU. RUNWAYS, PARKING, TAXIWAYS
 - RWY PROTECTION ZONES
 - EXISTING BUILDINGS
 - FUTURE BUILDINGS
 - ROADS
 - FUTURE AIRPORT PROPERTY LINE
 - CENTERLINES
 - EX. RUNWAY SAFETY AREA - RSA
 - EX. TAXIWAY SAFETY AREA - TSA
 - EX. OBJECT FREE AREA - OFA
 - EX. OBJECT FREE ZONE - OFZ



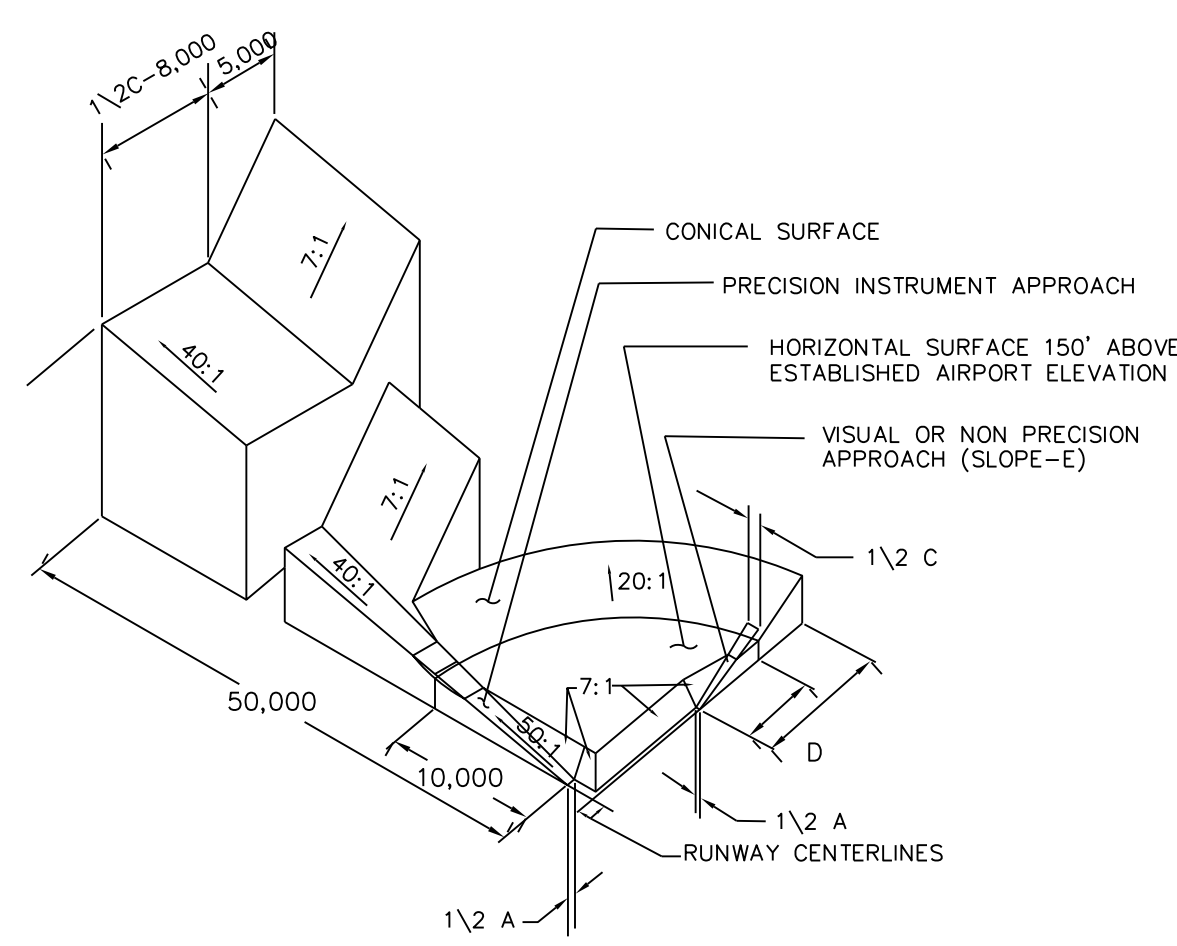
P:\M104513\PD5\81-01-ALP07-APPZ.dwg
J:\cadd\in 2/2/2005 11:36 am
GR34=..\UTIL\GR34.dwg
pl77=..\CIVIL\pl77.dwg
app=12-50-..\CIVIL\app-12-50.dwg
PROP=..\CIVIL\prop.dwg
BASE=..\CIVIL\BASE.dwg

M:\Projects\12940723\CADD\VPDS\81-035\Site\Output\Approach.dwg
 1/22/2009 2:12 pm
 jrn_wco_djw
 USGS=...
 F01=...
 p177a=...
 NORTH2=...



DIM	ITEM	DIMENSIONAL STANDARDS (FEET)						
		VISUAL RUNWAY		NON-PRECISION INSTRUMENT RUNWAY		PRECISION INSTRUMENT RUNWAY		
A	B	A	B	A	B	C	D	
A	WIDTH OF PRIMARY SURFACE AND APPROACH SURFACE WIDTH AT INNER END	250	500	500	500	1,000	1,000	
B	RADIUS OF HORIZONTAL SURFACE	5,000	5,000	5,000	10,000	10,000	10,000	
C	APPROACH SURFACE WIDTH AT END	1,250	1,500	2,000	3,500	4,000	16,000	
D	APPROACH SURFACE LENGTH	5,000	5,000	5,000	10,000	10,000		
E	APPROACH SLOPE	20:1	20:1	20:1	34:1	34:1		

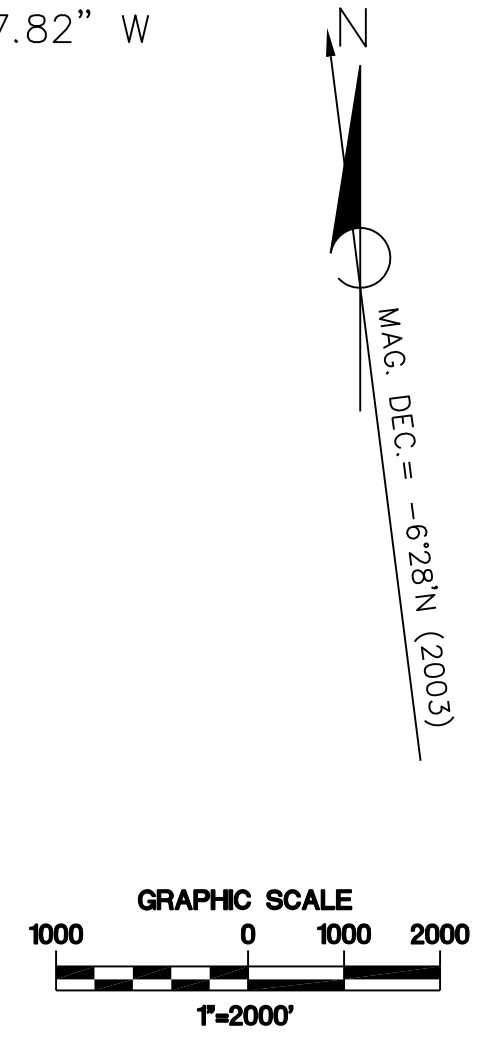
- A- UTILITY RUNWAYS
- B- RUNWAYS LARGER THAN UTILITY
- C- VISIBILITY MINIMUMS GREATER THAN 3/4 MILE
- D- VISIBILITY MINIMUMS AS LOW AS 3/4 MILE
- E- PRECISION INSTRUMENT APPROACH SLOPE IS 50:1 FOR INNER 10,000 FEET AND 40:1 FOR AN ADDITIONAL 40,000 FEET



ESTABLISHED AIRPORT EL. = 829'
 AIRPORT REFERENCE POINT

LAT: 42°13'20.67" N.
 LONG: 83°44'47.82" W

TOWERS	NO.	AGL	AMSL
1	210	1282	
2	210	1282	
3	299	1391	
4	222	1222	
5	118	1181	
6	279	1319	
7	274	1240	
8	237	1147	
9	185	1079	
10	107	950	
11	165	1062	
12	100	939	
13	70	900	
14	174	1029	
15	100	930	
16	240	1090	
17	197	1047	
18	250	1088	
19	190	1015	
20	305	1149	
21	189	1021	



D/E	JW	X	PM	RJC	X	SOC	DR	X	OC	MM	X	W.	MAJNOWSKI	IN	CHARGE	DATE	ISSUED	FOR

GRAND RAPIDS, MI.
 5850 PARKS DR., S.E.
 616 574-8800

ANN ARBOR MUNICIPAL AIRPORT
 AIRPORT LAYOUT PLAN
 FAR PART 77 APPROACH SURFACES DRAWING

ANN ARBOR, MICHIGAN

SITE NO.
81-1

DRAWING
10 OF 10

12940723