

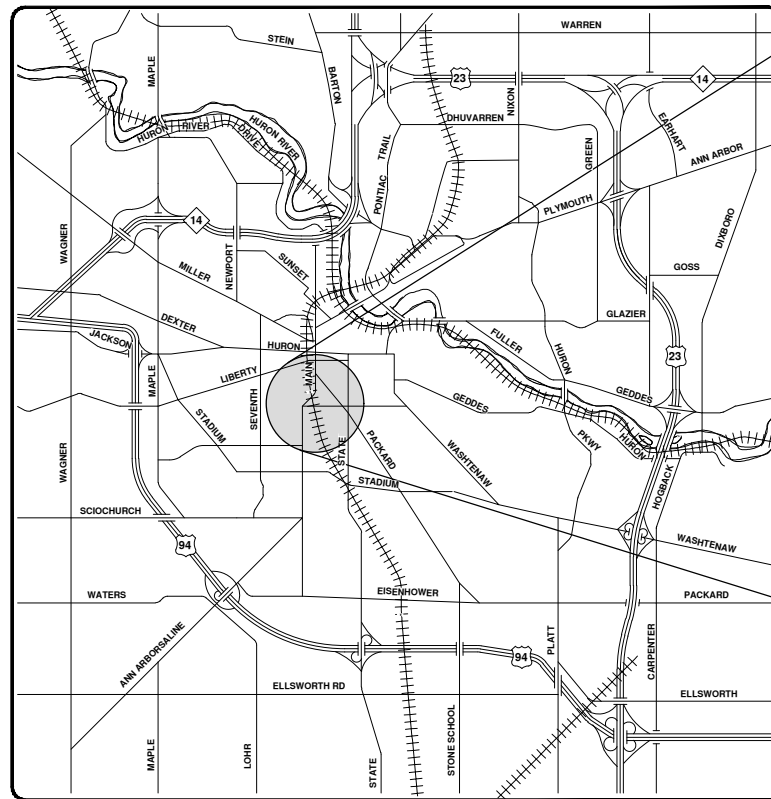


CITY OF ANN ARBOR ENGINEERING

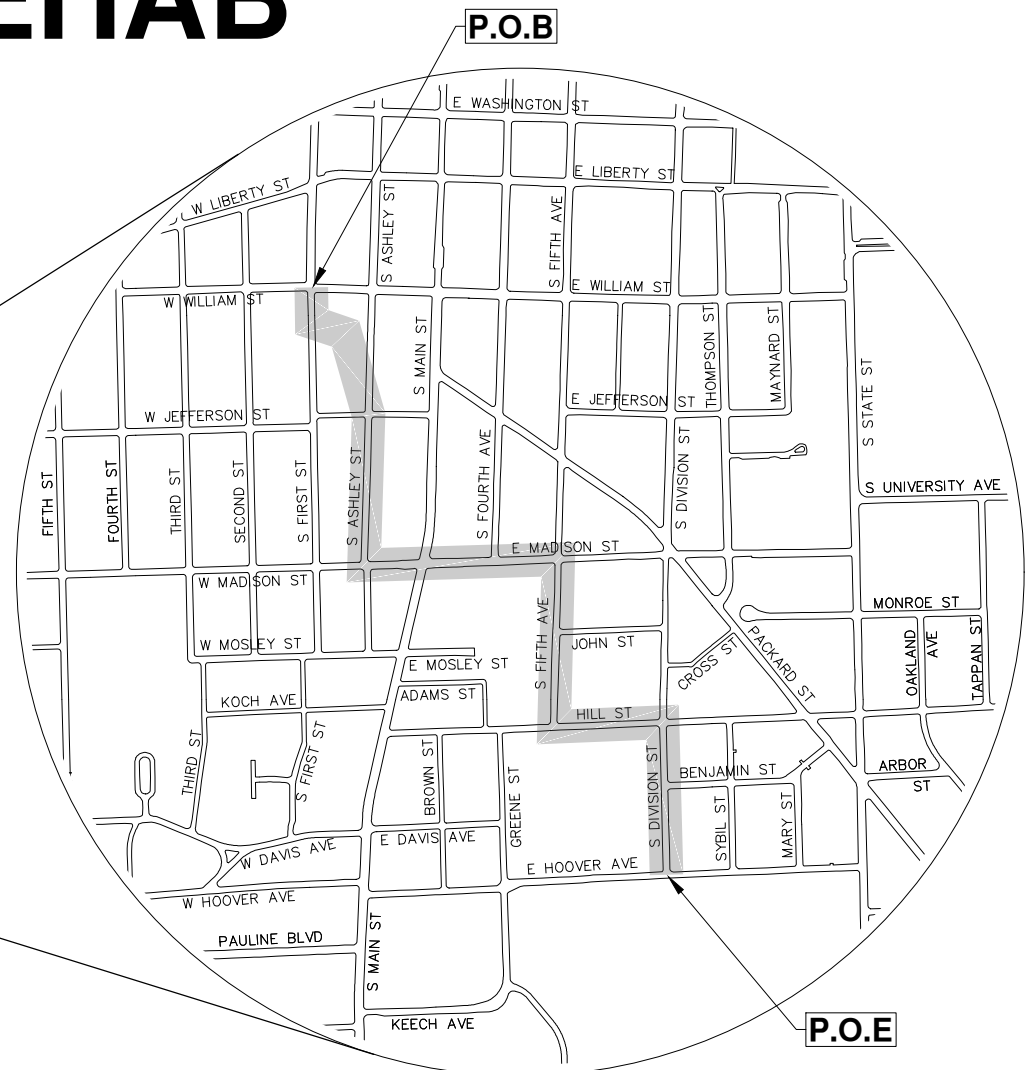
HIGH LEVEL TRUNKLINE SANITARY SEWER REHAB

ITB No. 4589, FILE No. 2018027

SHEET LIST TABLE	
SHEET NUMBER	SHEET TITLE
1	COVER SHEET
2	LOCATION MAP
3 - 4	RR TRACKS (ASHLEY TO FIRST/WILLIAM)
5 - 6	ASHLEY ST (MADISON TO RR TRACKS)
7 - 9	MADISON ST (S FIFTH TO ASHLEY)
10 - 11	FIFTH AVE (HILL TO MADISON)
12 - 13	HILL ST (S DIVISION TO S FIFTH)
14 - 15	S DIVISION (HOOVER TO HILL)



VICINITY MAP



NOTES:

FOR PROTECTION OF UNDERGROUND UTILITIES AND IN CONFORMANCE WITH PUBLIC ACT 174 OF 2013, THE CONTRACTOR SHALL CALL 811 OR 1-800-482-7171 A MINIMUM OF THREE FULL WORKING DAYS, EXCLUDING SATURDAYS, SUNDAYS, AND HOLIDAYS, PRIOR TO BEGINNING EACH EXCAVATION IN AREAS WHERE PUBLIC UTILITIES HAVE NOT BEEN PREVIOUSLY LOCATED. MEMBERS WILL THUS BE ROUTINELY NOTIFIED. THIS DOES NOT RELIEVE THE CONTRACTOR OF THE RESPONSIBILITY OF NOTIFYING UTILITY OWNERS WHO MAY NOT BE A PART OF THE "MISS DIG" ALERT SYSTEM.

THE UNDERGROUND LOCATIONS SHOWN FOR NATURAL GAS, TELEPHONE, ELECTRICAL POWER, CABLE TV AND FIBER OPTIC LINES ARE APPROXIMATE. THE CITY OF ANN ARBOR ASSUMES NO RESPONSIBILITY FOR THEIR ACCURATE REPRESENTATION IN THIS DRAWING. MISS DIG MUST BE CONTACTED PRIOR TO CONSTRUCTION TO LOCATE THESE UTILITIES.

THE CONSTRUCTION COVERED BY THESE PLANS SHALL CONFORM TO THE 1994 EDITION OF THE CITY OF ANN ARBOR PUBLIC SERVICES DEPARTMENT STANDARD SPECIFICATIONS, ITS DETAILS, WHICH ARE INCLUDED BY REFERENCE, AND THIS PROJECT'S CONTRACT DOCUMENTS. THE OMISSION OF ANY CURRENT STANDARD DETAIL DOES NOT RELIEVE THE CONTRACTOR OF THIS REQUIREMENT.



REV.	DATE	DESCRIPTION
00	5-31-19	OUT FOR BID
01		FOR BIDDING
02		FOR BIDDING
03		FOR BIDDING
04		FOR BIDDING
05		FOR BIDDING
06		FOR BIDDING
07		FOR BIDDING
08		FOR BIDDING
09		FOR BIDDING
10		FOR BIDDING
11		FOR BIDDING
12		FOR BIDDING
13		FOR BIDDING
14		FOR BIDDING
15		FOR BIDDING
16		FOR BIDDING
17		FOR BIDDING
18		FOR BIDDING
19		FOR BIDDING
20		FOR BIDDING
21		FOR BIDDING
22		FOR BIDDING
23		FOR BIDDING
24		FOR BIDDING
25		FOR BIDDING
26		FOR BIDDING
27		FOR BIDDING
28		FOR BIDDING
29		FOR BIDDING
30		FOR BIDDING
31		FOR BIDDING
32		FOR BIDDING
33		FOR BIDDING
34		FOR BIDDING
35		FOR BIDDING
36		FOR BIDDING
37		FOR BIDDING
38		FOR BIDDING
39		FOR BIDDING
40		FOR BIDDING
41		FOR BIDDING
42		FOR BIDDING
43		FOR BIDDING
44		FOR BIDDING
45		FOR BIDDING
46		FOR BIDDING
47		FOR BIDDING
48		FOR BIDDING
49		FOR BIDDING
50		FOR BIDDING
51		FOR BIDDING
52		FOR BIDDING
53		FOR BIDDING
54		FOR BIDDING
55		FOR BIDDING
56		FOR BIDDING
57		FOR BIDDING
58		FOR BIDDING
59		FOR BIDDING
60		FOR BIDDING
61		FOR BIDDING
62		FOR BIDDING
63		FOR BIDDING
64		FOR BIDDING
65		FOR BIDDING
66		FOR BIDDING
67		FOR BIDDING
68		FOR BIDDING
69		FOR BIDDING
70		FOR BIDDING
71		FOR BIDDING
72		FOR BIDDING
73		FOR BIDDING
74		FOR BIDDING
75		FOR BIDDING
76		FOR BIDDING
77		FOR BIDDING
78		FOR BIDDING
79		FOR BIDDING
80		FOR BIDDING
81		FOR BIDDING
82		FOR BIDDING
83		FOR BIDDING
84		FOR BIDDING
85		FOR BIDDING
86		FOR BIDDING
87		FOR BIDDING
88		FOR BIDDING
89		FOR BIDDING
90		FOR BIDDING
91		FOR BIDDING
92		FOR BIDDING
93		FOR BIDDING
94		FOR BIDDING
95		FOR BIDDING
96		FOR BIDDING
97		FOR BIDDING
98		FOR BIDDING
99		FOR BIDDING
100		FOR BIDDING

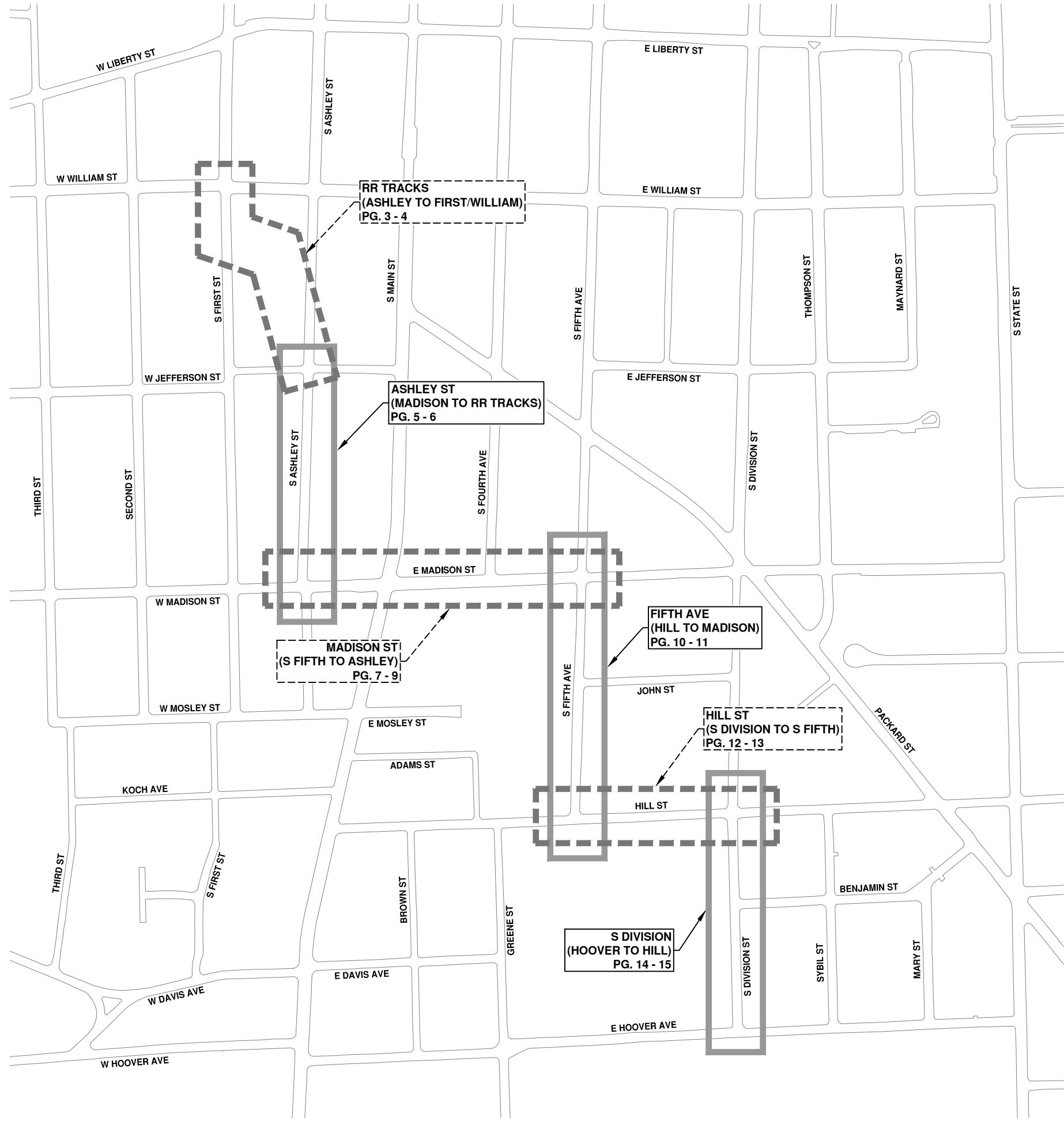
CITY OF ANN ARBOR
PUBLIC SERVICES
301 EAST HURON STREET
ANN ARBOR, MI 48106-8647
734.769.4410
www.a2gov.org



CITY OF ANN ARBOR - PUBLIC SERVICES - ENGINEERING
PROJECT DESCRIPTION AND LIMITS
SCALE
DRAWING No.
2018027-1
SHEET No.
1 OF 15

PREPARED UNDER THE SUPERVISION OF
Igor V. Kotlyar
IGOR V. KOTLYAR, P.E. - MI LICENSE No. 43287
PROJECT ENGINEER
DATE
5/31/2019





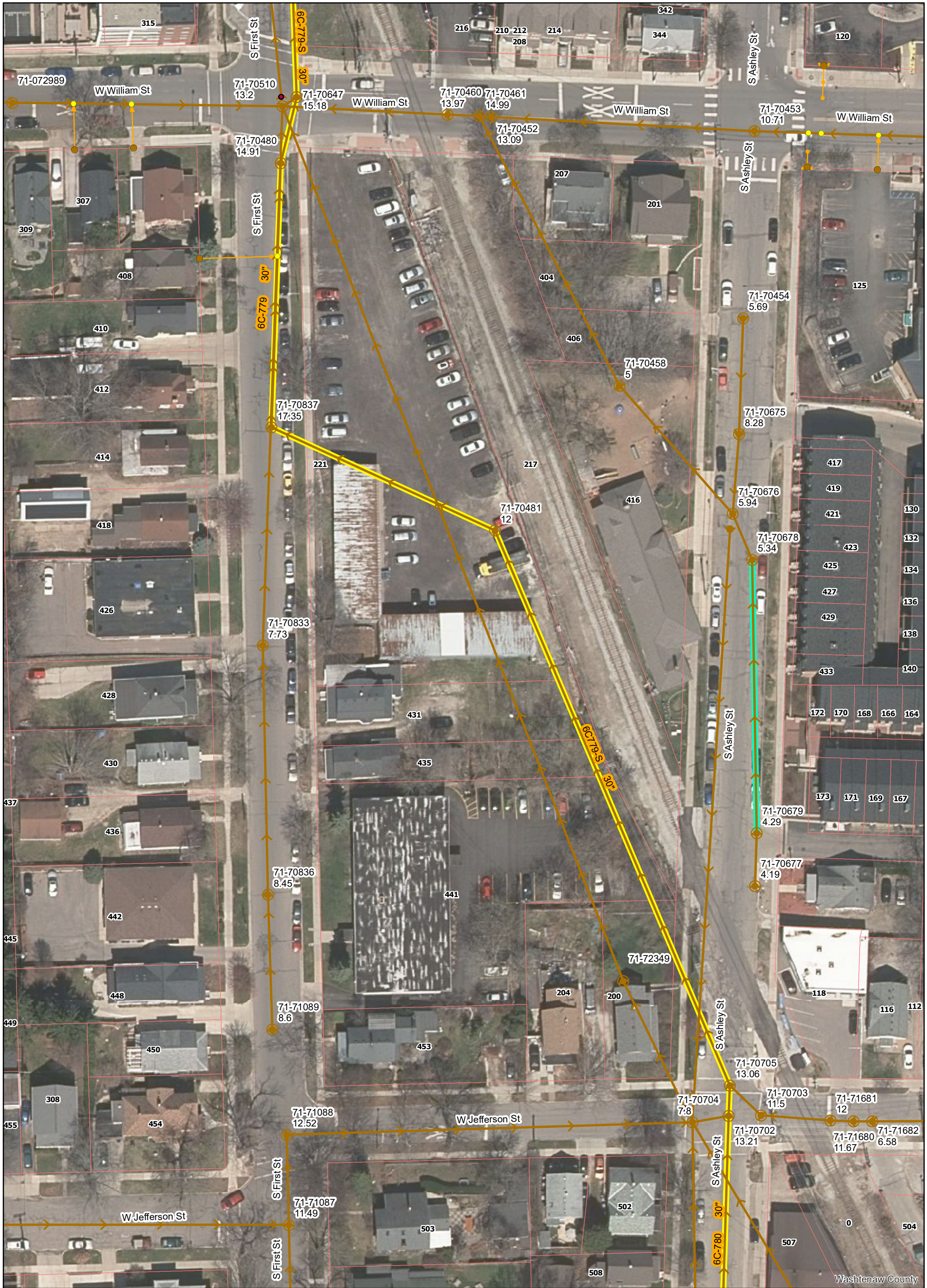
REV.	DATE	DESCRIPTION
00	5-31-19	OUT FOR BID
		DRAWN
		CHKD

CITY OF ANN ARBOR
 PUBLIC SERVICES
 301 EAST HURON STREET
 ANN ARBOR, MI 48106-8667
 www.a3gov.org



CITY OF ANN ARBOR - PUBLIC SERVICES - ENGINEERING
HIGH LEVEL TRUNKLINE SANITARY SEWER REHAB
 LOCATION MAP

SCALE: 1" = 200'
 DRAWING No. 2018027-2



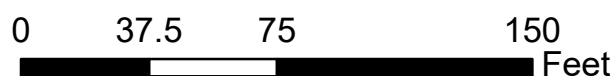
Legend

- Proposed Lining
- Lined Pipe
- Sanitary Main
- Sanitary Lateral, Abandoned
- Sanitary Lateral
- ✖ Sanitary Lateral, Plugged
- Manhole

Example: 71-70682 (Manhole ID)

Example: 5.07 (Manhole Depth)

RR Tracks (Ashley to First/William)



For terms and conditions of use see www.a2gov.org/terms

Washtenaw County

REFERENCE LINE FOR
TWO INCHES
PHOTOGRAPHED DRAWINGS

ASHLEY

ORIGINAL TOWN

WILLIAMS ST.

ST.

JEFFERSON ST.

FIRST

ALLEN'S

CREEK

Freight Houses

ANN ARBOR RR. Station

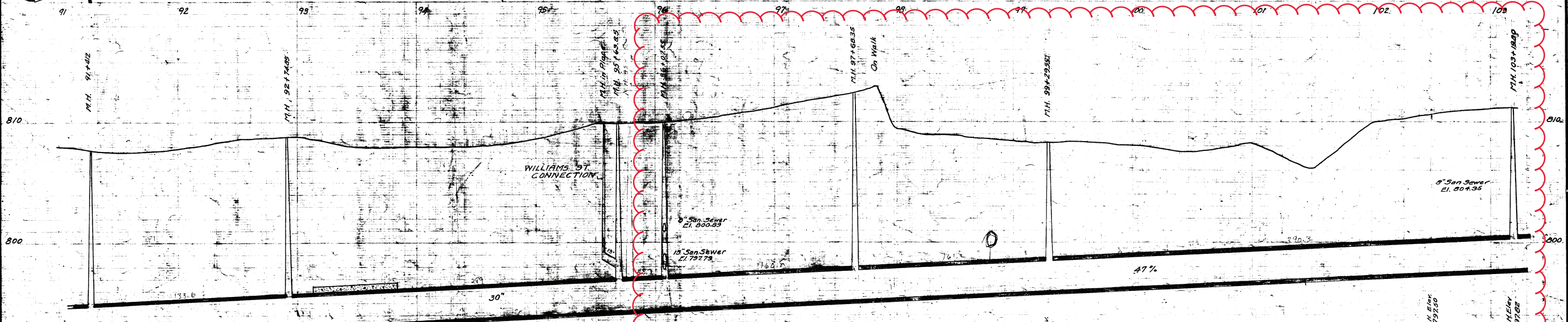
11/8/77 Depot San. Sewer is tapped into P.H. 99+29.55

W. S. MAYNARD & Co.

431 and 435 Connected to Main.

ST.

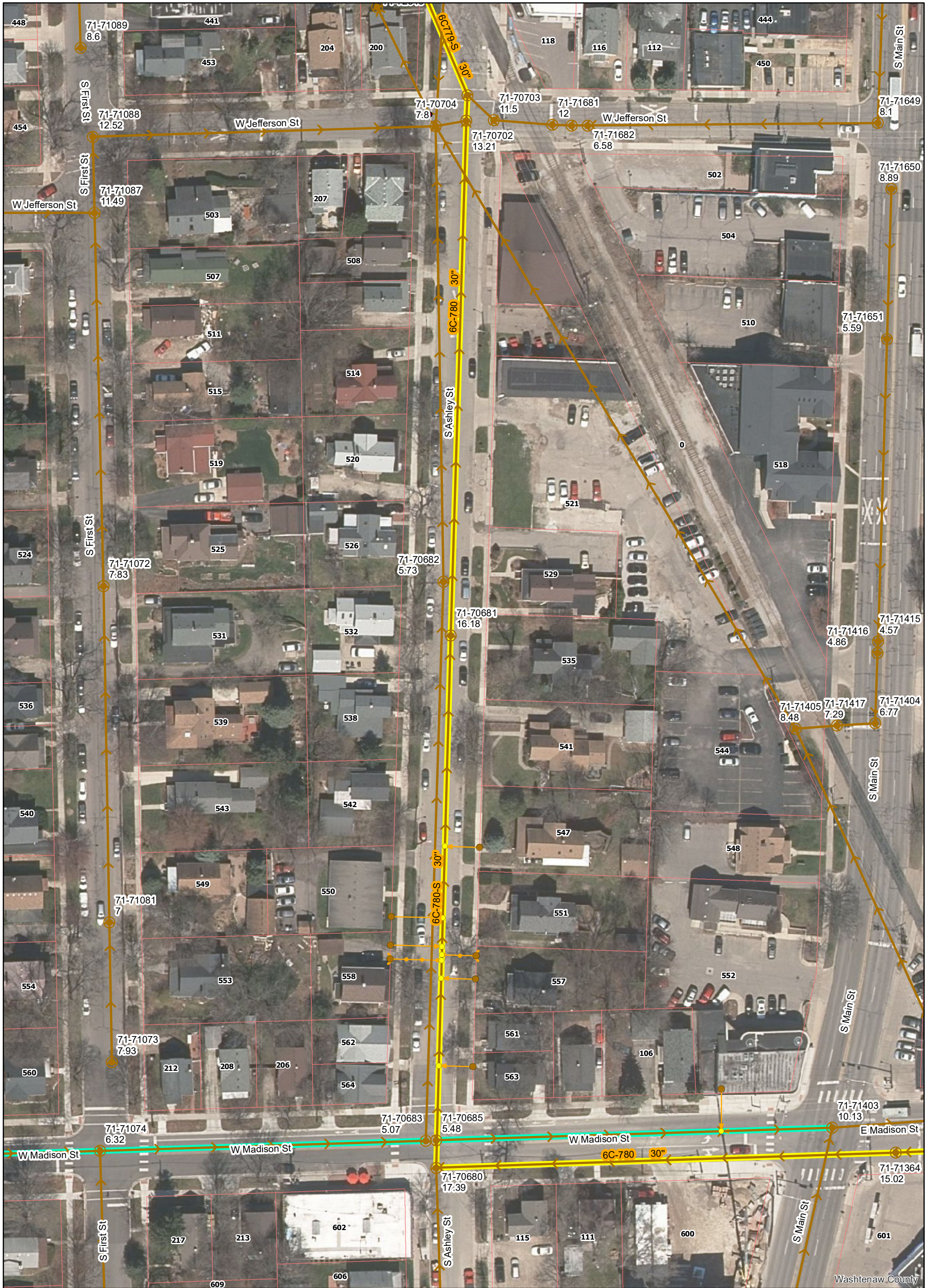
408 96+512	410 97+112	412 97+637
---------------	---------------	---------------



Section E.

Digital Status
Scanned On: 2-25-05
By: DKG
Despeckled: Yes
Vector: Yes
O.C.R.: Yes

SHEET No. INDEX No. 2015 SHELF 6 SIZE C SUB. No. 779	CITY ENGINEER'S OFFICE ANN ARBOR, MICHIGAN PLAN AND PROFILE OF MAIN TRUNK SANITARY SEWER
	Jefferson St to Williams St. Geo. H. Sandenburgh City Engineer 1927 Scales: - Plan 1" = 40' Profile Vert. 1" = 10'
Drawn by: VWM Traced by: VWM Checked by:	



- Legend**
- Proposed Lining
 - Lined Pipe
 - Sanitary Main
 - Sanitary Lateral, Abandoned
 - Sanitary Lateral
 - Sanitary Lateral, Plugged
 - Manhole

Ashley St (Madison to RR Tracks)

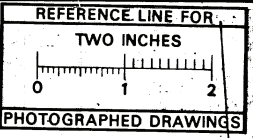
Example: 71-70682 (Manhole ID)

Example: 5.07 (Manhole Depth)

For terms and conditions of use see www.a2gov.org/terms



Washtenaw County



MEASUREMENTS TO HOUSE CONNECTIONS

Sta. Y.	House No
Not in Ashley St.	561
"	563
105 + 22.6	511
107 + 04.6	529
107 + 68.6	535
107 + 92.0	541
108 + 96.6	547
109 + 70.4	551
110 + 01.6	557
Sta. for	513 not found

Digital Status
Scanned On: 2-25-05
By: DGK
Despeckled: Yes
Vectors:
O.C.R.:

Section E. Alternate Route.

CITY ENGINEER'S OFFICE
ANN ARBOR, MICH.

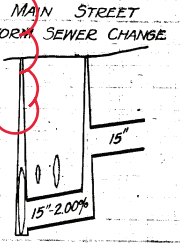
PLAN AND PROFILE
ALTERNATE ROUTE
OF
**MAIN TRUNK
SANITARY SEWER.**
Ashley-Jefferson to Madison to Madison-Ashley to Main

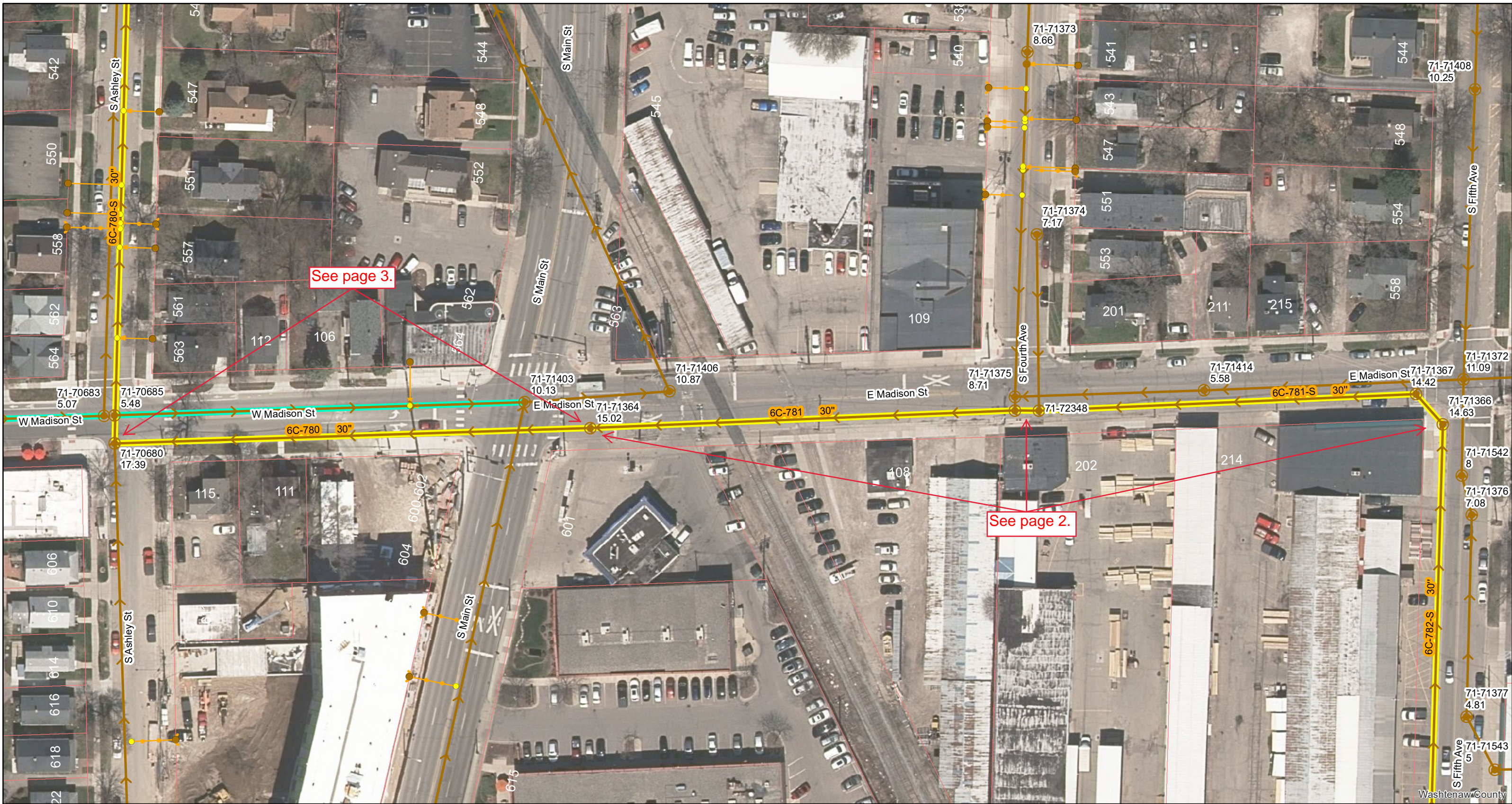
Geo. H. Sandenburgh City Engineer
1927-2-1

SHEET No. _____
INDEX No. 2016
SHELF No. 6
SIZE C
SUB No. 780

DRAWN BY _____
TRACED BY KVD
CHECKED BY _____

Scales: Plan Hor. 1"=40' Prof. Vert. 1"=4'



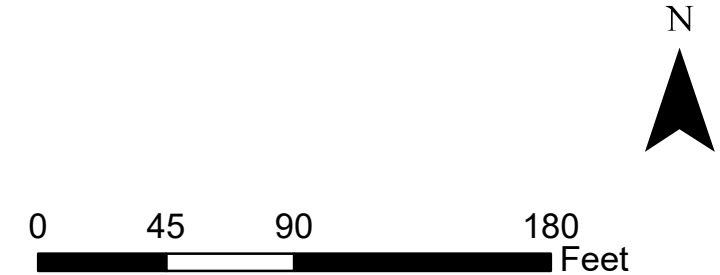


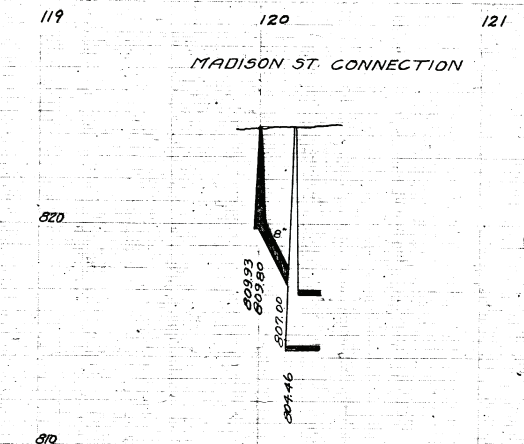
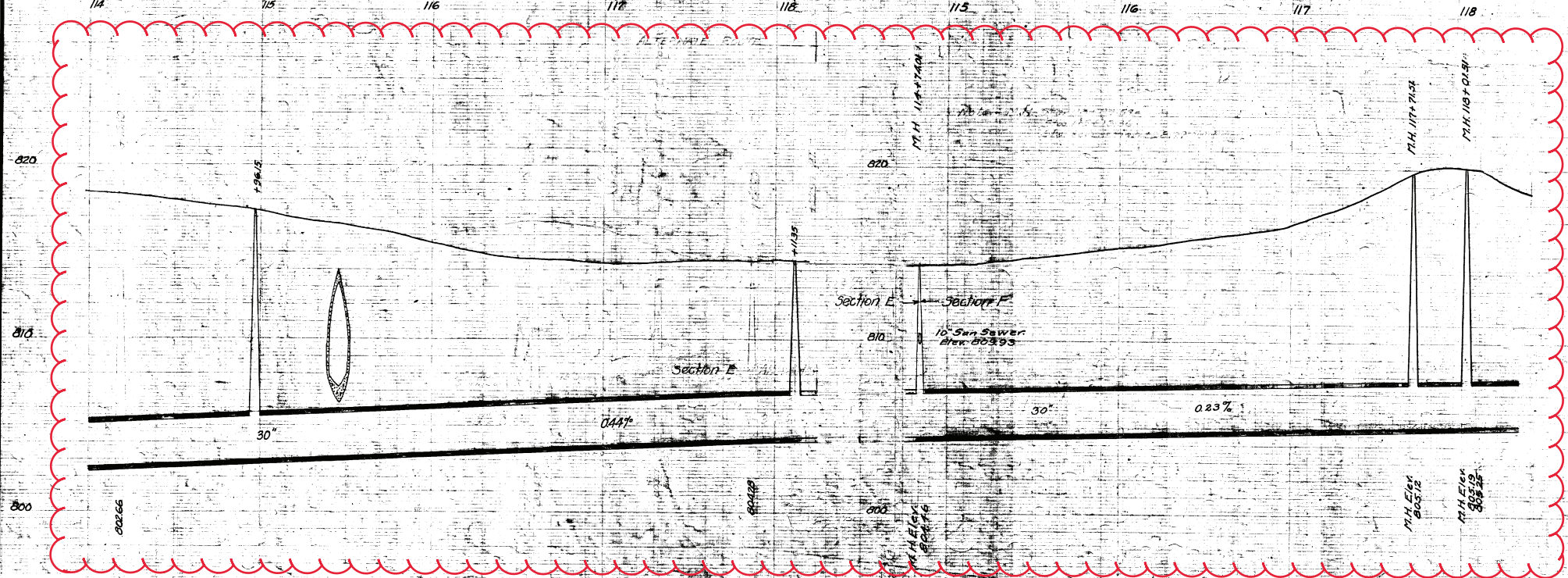
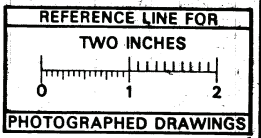
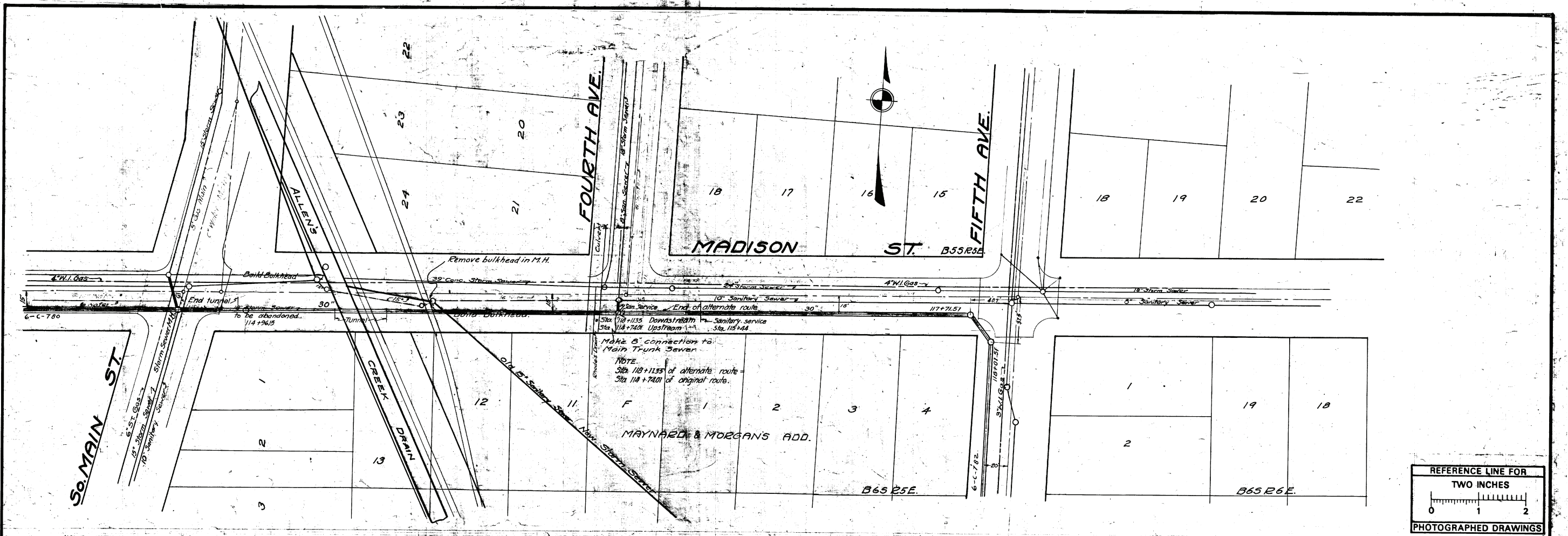
- Legend**
- Proposed Lining
 - Lined Pipe
 - Sanitary Main
 - Sanitary Lateral, Abandoned
 - Sanitary Lateral
 - ⊗ Sanitary Lateral, Plugged
 - Manhole

Example: 71-70682 (Manhole ID)
 Example: 5.07 (Manhole Depth)

Madison St (S Fifth to Ashley)

For terms and conditions of use see www.a2gov.org/terms



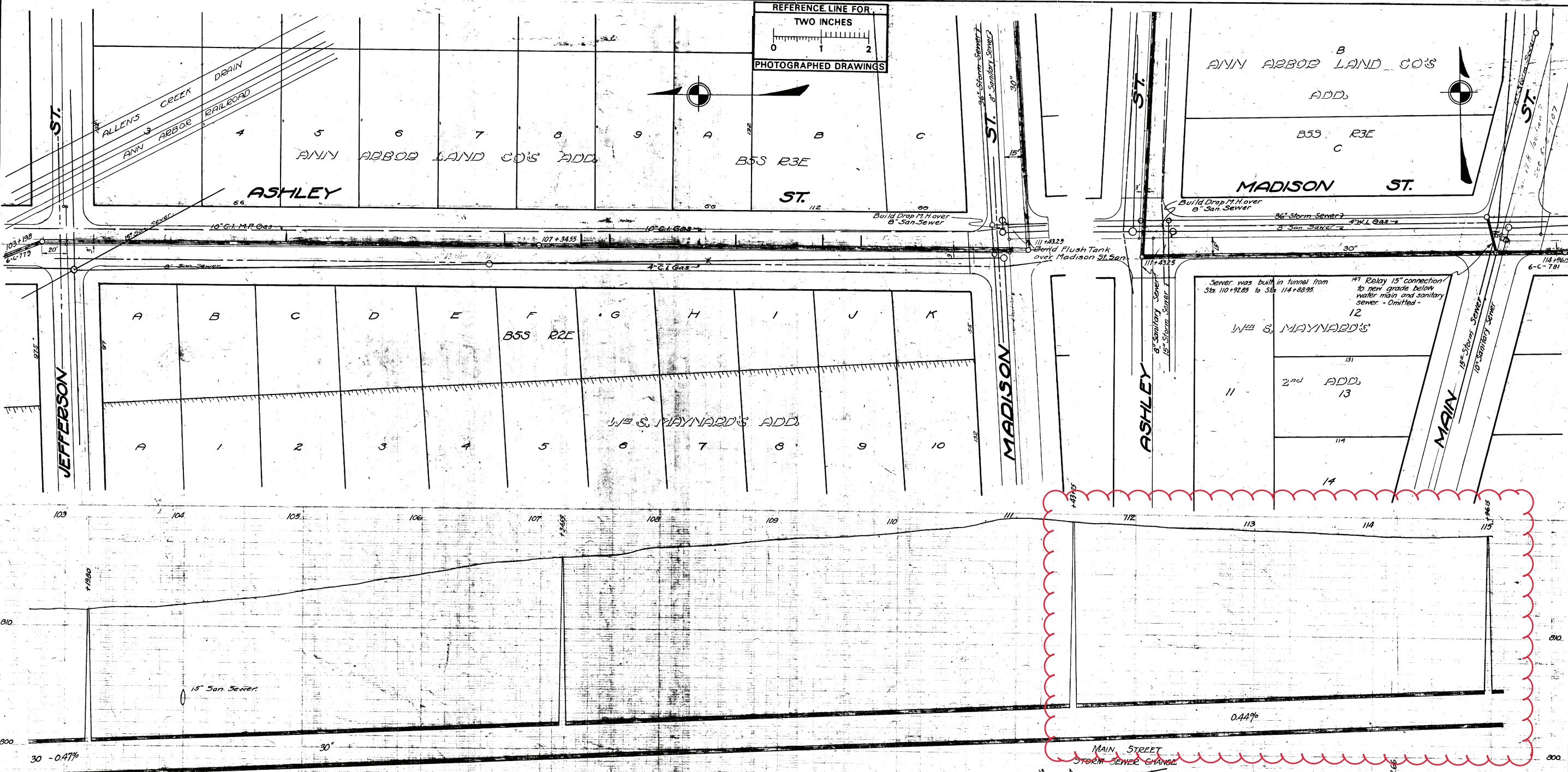
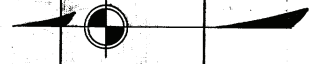


Digital Status
Scanned On: 2-25-05
By: DKG
Despeckled: Yes
Vector:
O.C.R.:

CITY ENGINEER'S OFFICE
ANN ARBOR, MICH.
PLAN AND PROFILE
OF
**MAIN TRUNK
SANITARY SEWER**
Madison - Main to Fifth Ave.
Geo. H. Sandenburgh City Engineer
1925-9-22
Scales: Plan, Hor. 1"=40' Prof. Vert. 1"=4'

INDEX No. 2017
SHELF 6
SIZE C
SUB No. 781
Drawn by:
Traced by KWD
Checked by:

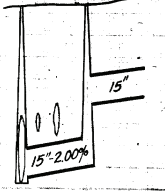
REFERENCE LINE FOR
TWO INCHES
PHOTOGRAPHED DRAWINGS



MEASUREMENTS
TO
HOUSE CONNECTIONS

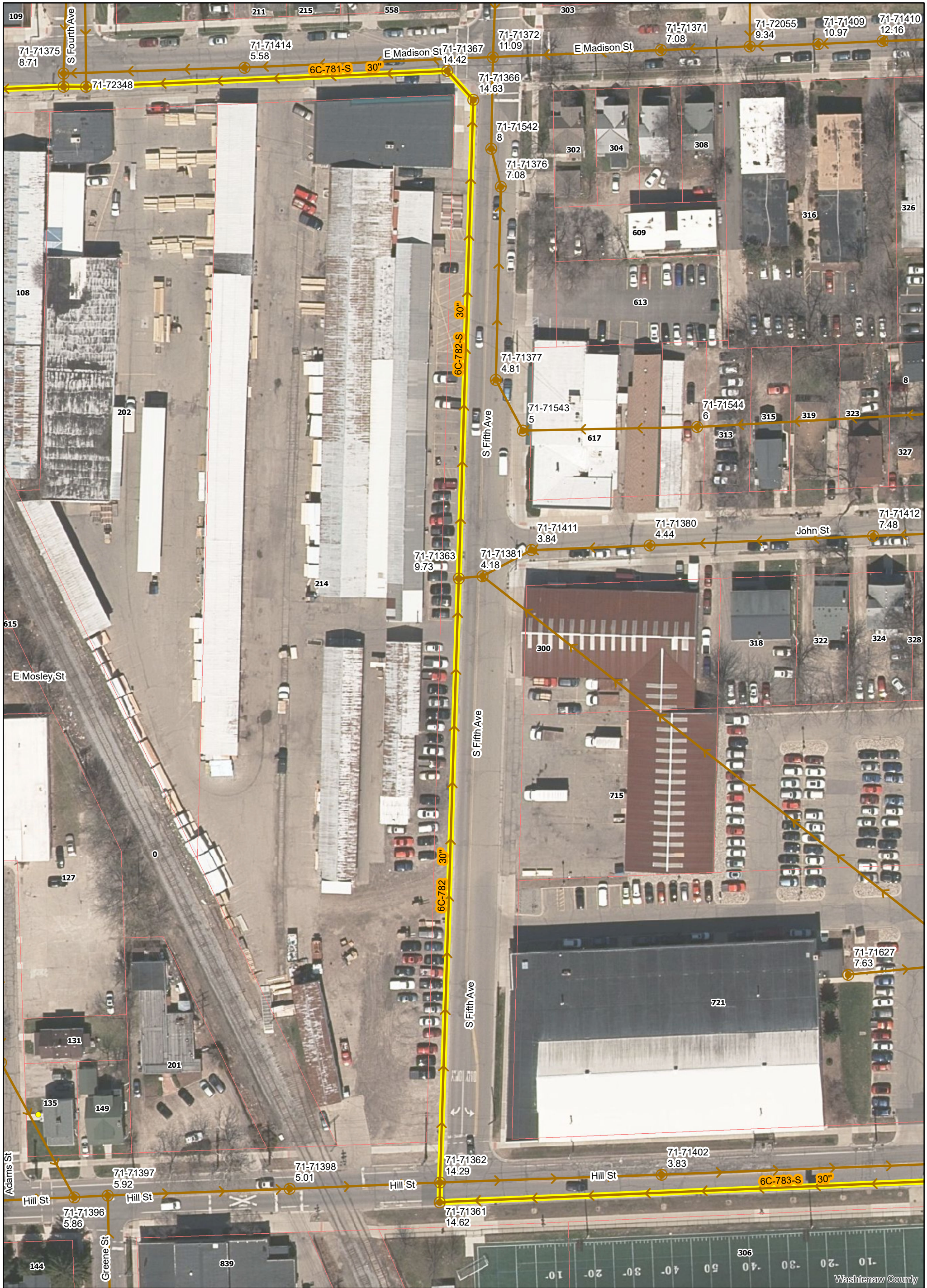
Sta. Y.	House No
Not in Ashley St.	561
"	563
105 + 22.6	511
107 + 04.6	529
107 + 68.6	535
107 + 92.0	541
108 + 96.6	547
109 + 70.4	551
110 + 01.6	557
Sta. for	513 not found

Digital Status
Scanned On: 2-25-05
By: DGK
Despeckled: Yes
Vectors:
O.C.R.:



SHEET No.
INDEX No. 2016
SHELF No. 6
SIZE C
SUB No. 780
DRAWN BY
TRACED BY KVD
CHECKED BY

CITY ENGINEER'S OFFICE
ANN ARBOR, MICH.
PLAN AND PROFILE
ALTERNATE
ROUTE
OF
**MAIN TRUNK
SANITARY SEWER**
Ashley-Jefferson to Madison to Madison-Ashley to Main
Geo. H. Sandenburgh City Engineer
1927-2-1
Scales: Plan Hor. 1"=40' Prof. Vert. 1"=4'

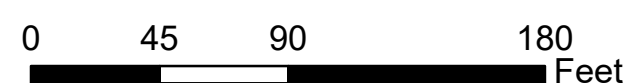


- Legend**
- Proposed Lining
 - Lined Pipe
 - Sanitary Main
 - Sanitary Lateral, Abandoned
 - Sanitary Lateral
 - ✕ Sanitary Lateral, Plugged
 - Manhole

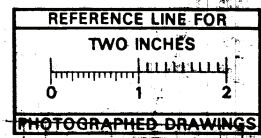
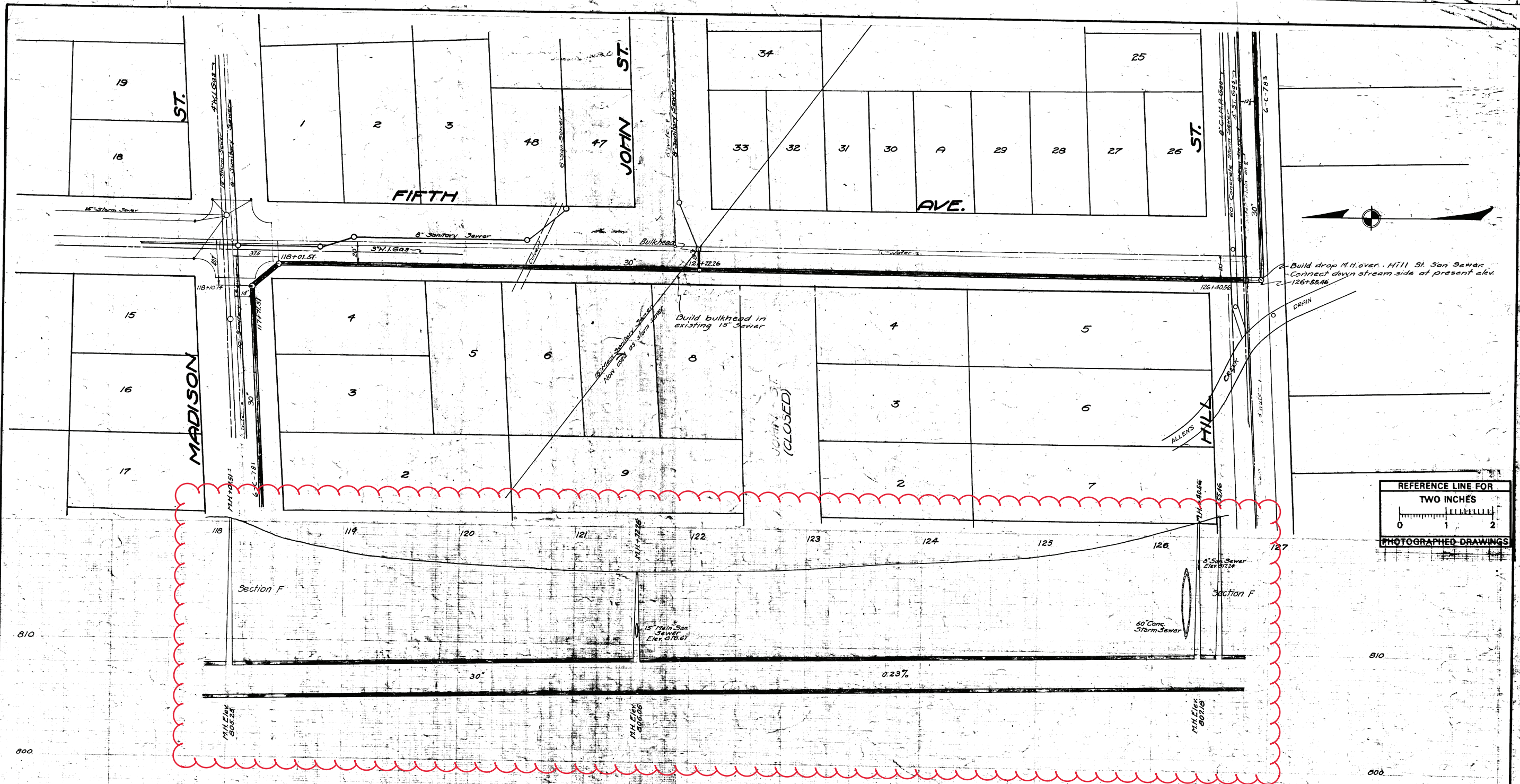
Fifth Ave (Hill to Madison)



Example: 71-70682 (Manhole ID)
 Example: 5.07 (Manhole Depth)



For terms and conditions of use see www.a2gov.org/terms

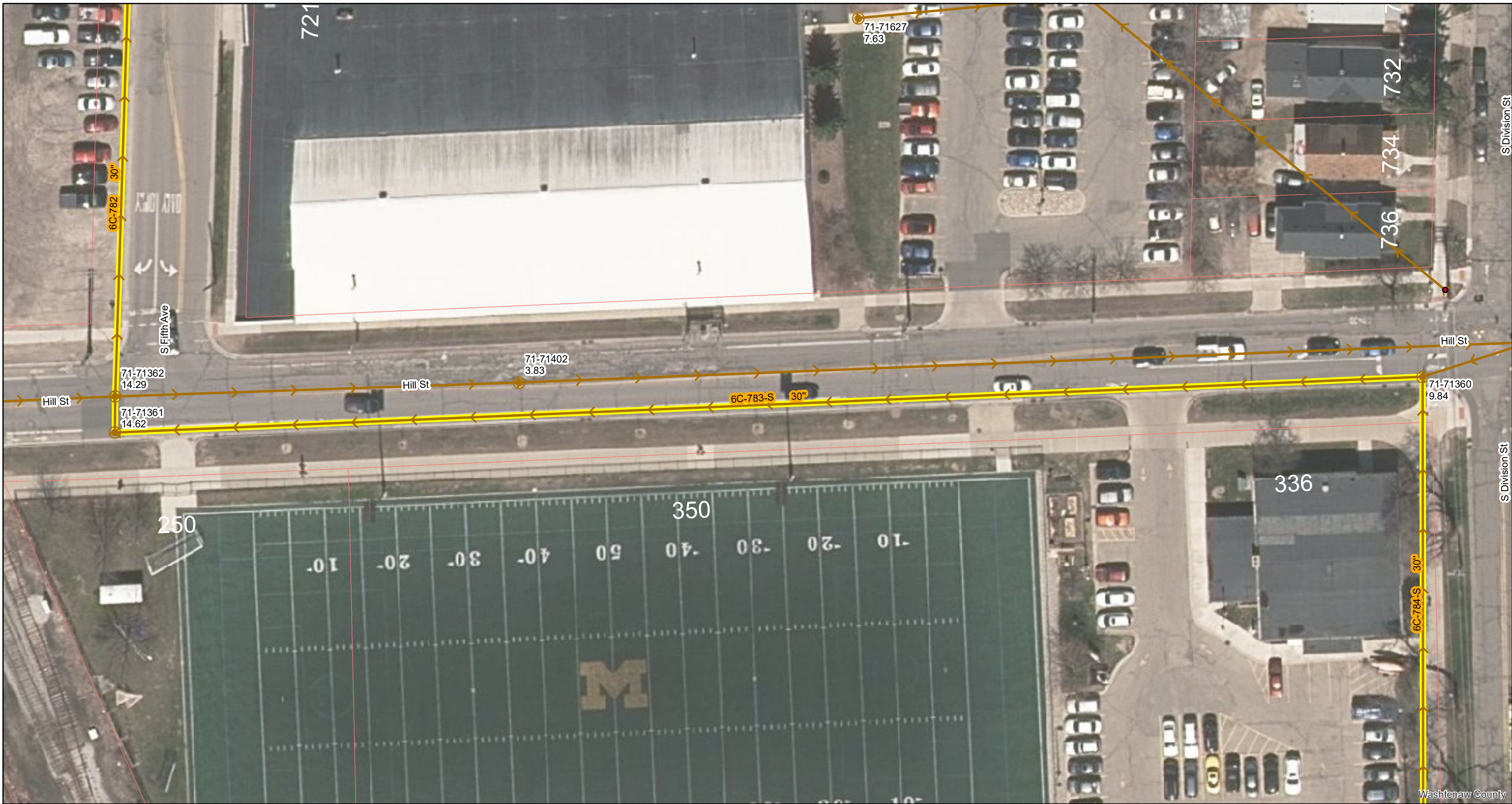


Digital Status
 Scanned On: 2-25-05
 By: DGE
 Despeckled: Yes
 Vectors:
 O.C.R.:

CITY ENGINEER'S OFFICE
ANN ARBOR, MICH.
 PLAN AND PROFILE
 OF
**MAIN TRUNK
 SANITARY SEWER**
 Fifth Ave. - Madison to Hill
 Geo. H. Sandenburgh City Engineer
 1926 - 9 - 23
 Scales: Plan Hor. 1" = 40' Prof. Ver. 1" = 2'

INDEX No. 2013
 SHELF 6
 SIZE C
 SUB No. 182

Drawn by
 Traced by R.D.
 Checked by



Legend

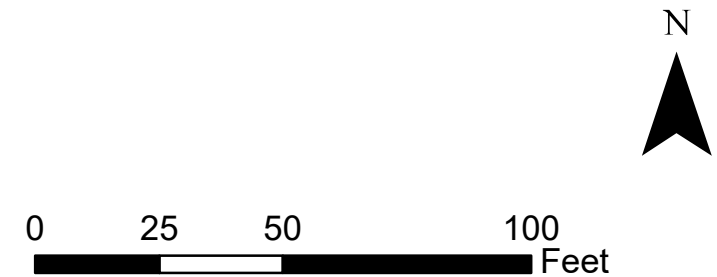
- Proposed Lining
- Sanitary Lateral, Abandoned
- Lined Pipe
- Sanitary Lateral
- Sanitary Main
- Sanitary Lateral, Plugged
- Manhole

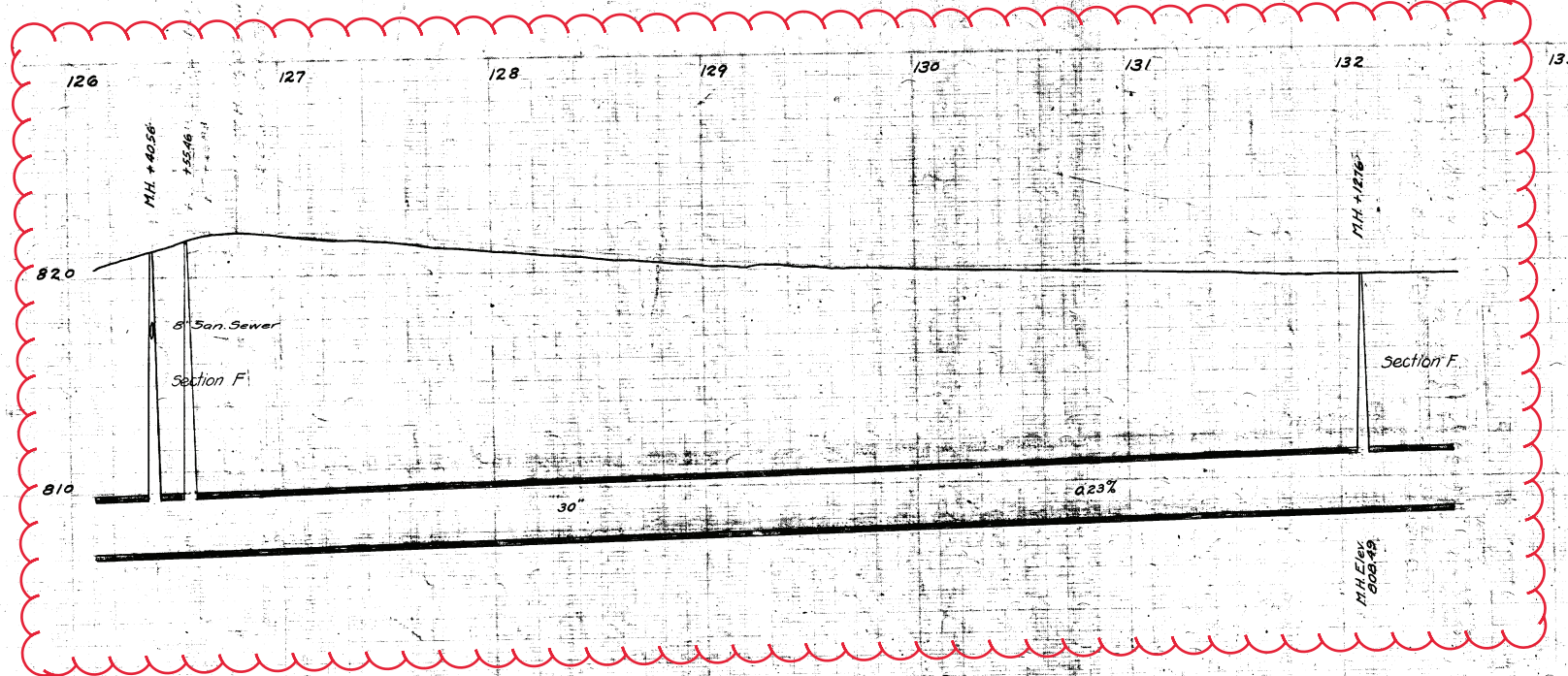
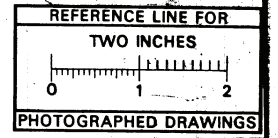
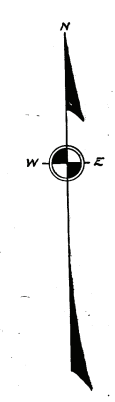
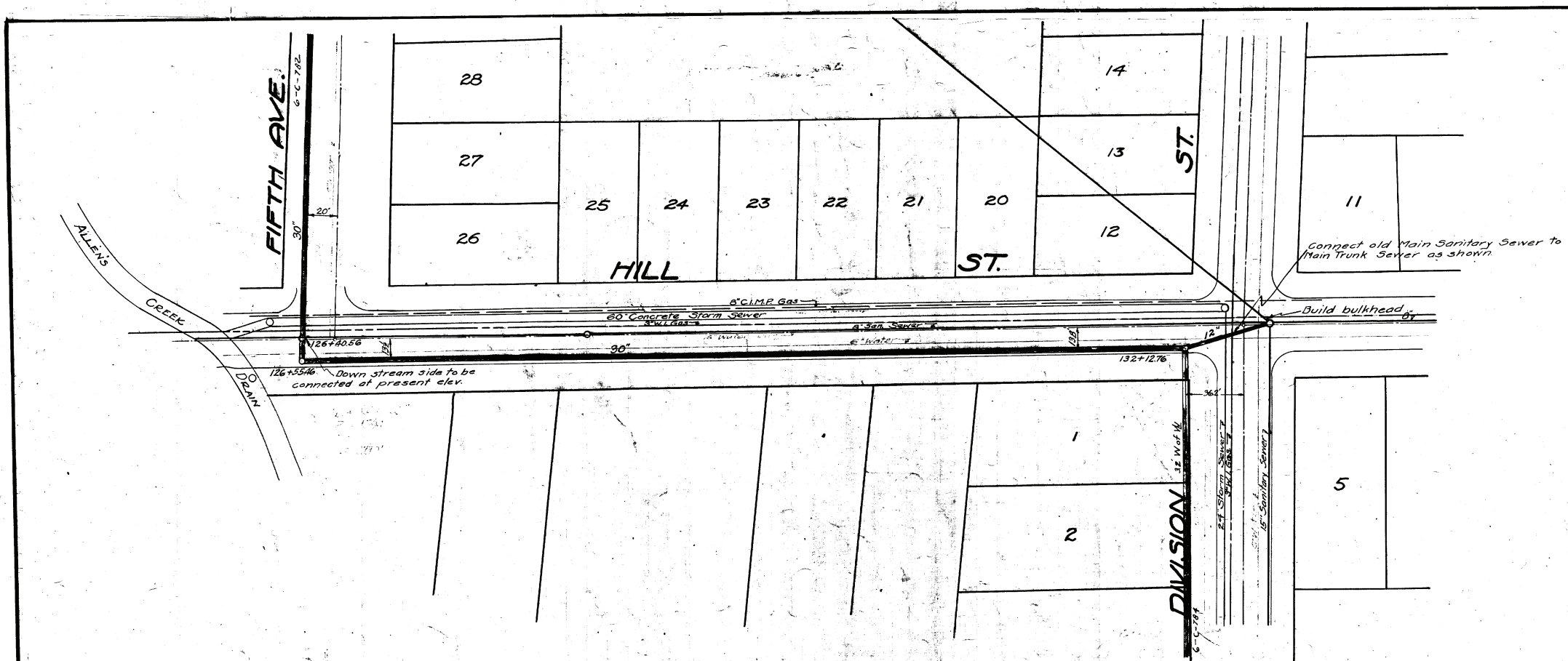
Example: 71-70682 (Manhole ID)

Example: 5.07 (Manhole Depth)

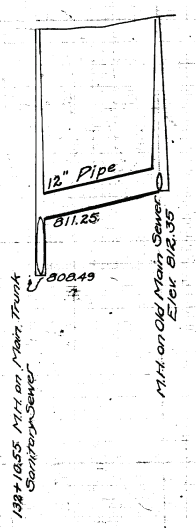
Hill St (S Division to S Fifth)

For terms and conditions of use see www.a2gov.org/terms





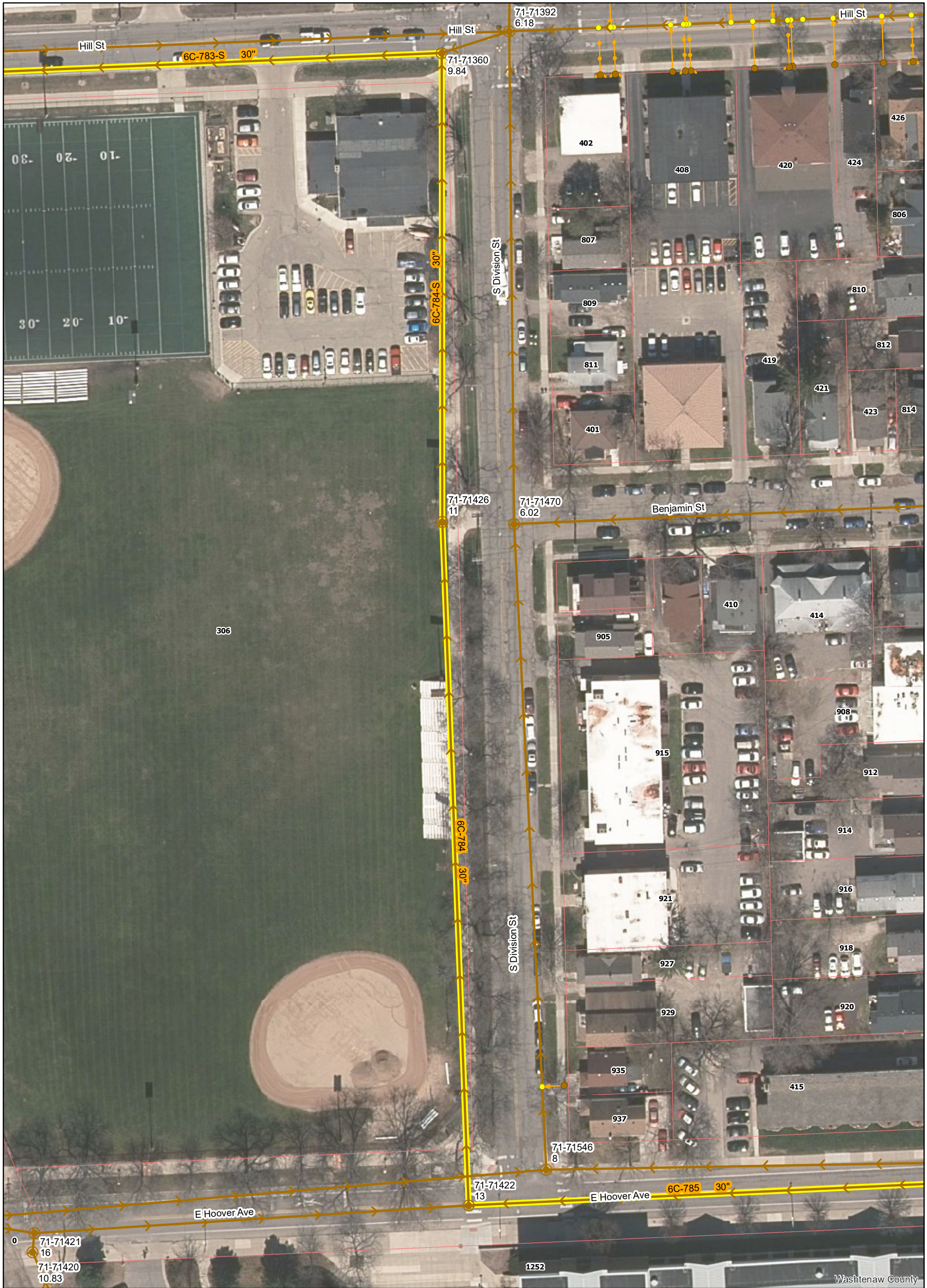
CONNECTION OF OLD MAIN SANITARY TO MAIN TRUNK SANITARY SEWER AT HILL & DIVISION.



Digital Status
Scanned On: 2-25-05
By: DKG
Despeckled: Yes
Vectors:
O.C.R.:

INDEX No 2019
SHELF 6
SIZE C
SUB. No 7B3
Drawn by
Traced by RJD
Checked by

CITY ENGINEER'S OFFICE
ANN ARBOR, MICH.
PLAN AND PROFILE
OF
**MAIN TRUNK
SANITARY SEWER**
Hill - Fifth Ave to Division
Geo. H. Sondenburgh City Engineer
1926-9-24
Scale: Plan Horizontal - 40' Vertical - 1"

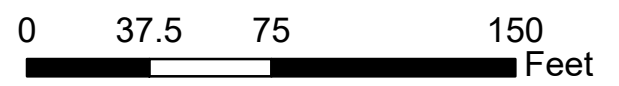


- Legend**
- Proposed Lining
 - Lined Pipe
 - Sanitary Main
 - Sanitary Lateral, Abandoned
 - Sanitary Lateral
 - Sanitary Lateral, Plugged
 - Manhole

Example: 71-70682 (Manhole ID)

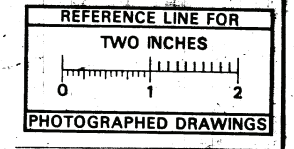
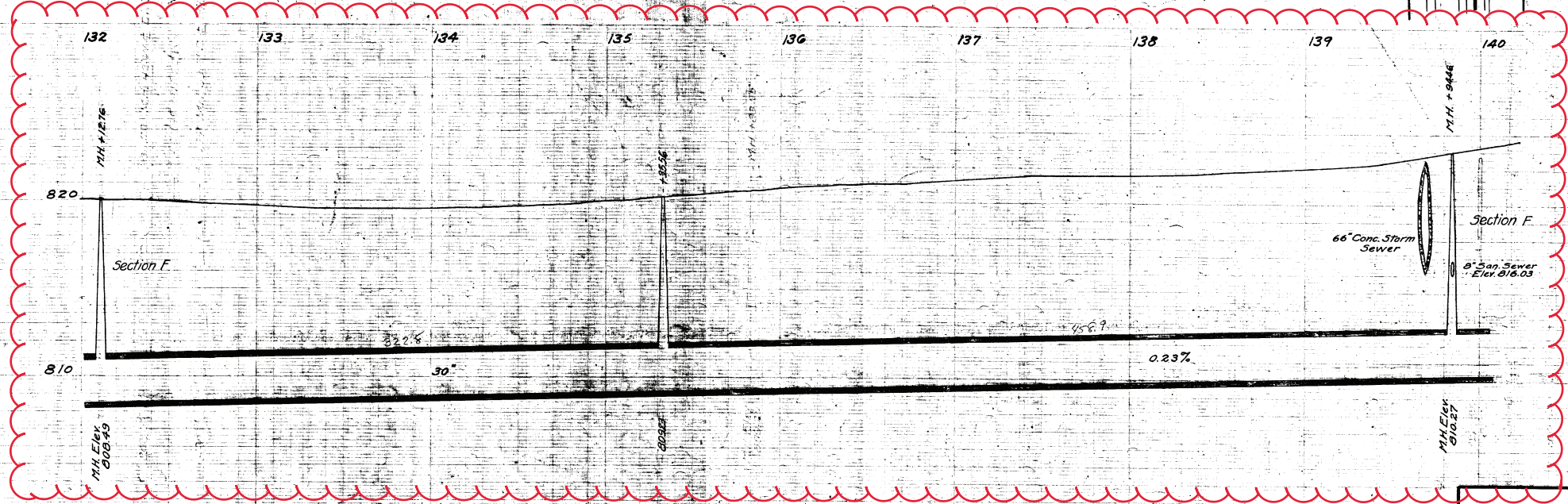
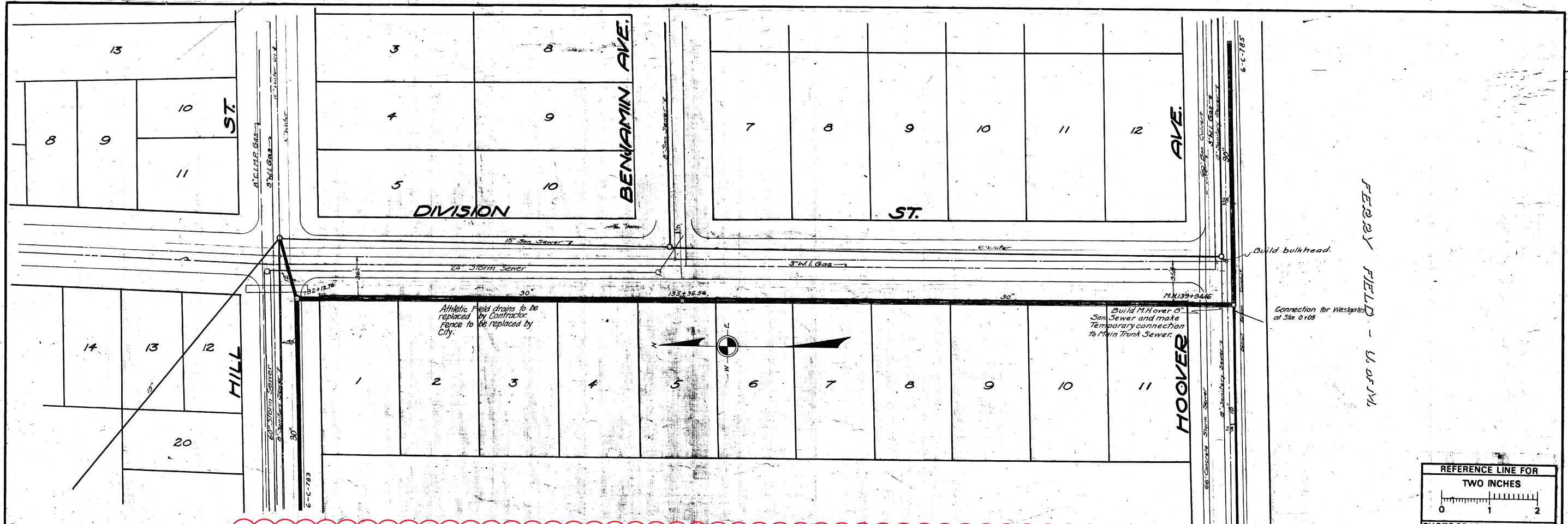
Example: 5.07 (Manhole Depth)

S Division (Hoover to Hill)



For terms and conditions of use see www.a2gov.org/terms

Washtenaw County



Digital Status
 Scanned On: 2-25-05
 By: DCK
 Despeckled: Yes
 Vectors:
 O.C.R.:

CITY ENGINEER'S OFFICE
ANN ARBOR, MICH.
 PLAN AND PROFILE
 of
**MAIN TRUNK
 SANITARY SEWER**
 Division - Hill to Hoover
 Geo. H. Sandenburgh, City Engineer
 1926-9-26
 Scales: Plan Hor. 1"=40' Prof. Vert. 1"=4'

INDEX No. 2020
 SHELF 6
 SIZE C
 SUB. No. 784

Drawn by
 Traced by KGD
 Checked by