

ADDENDUM No. 2

ITB No. 4496

West Liberty Reconstruction

Bids Due: May 11, 2017 at 2:00 P.M. (local time)

The following changes, additions, and/or deletions shall be made to the Invitation to Bid for West Liberty Reconstruction, ITB No. 4496, on which proposals will be received on/or before May 11, 2017, at 2:00 P.M. (local time).

The information contained herein shall take precedence over the original documents and all previous addenda (if any), and is appended thereto. **This Addendum includes 5 pages.**

Bidder is to acknowledge receipt of this Addendum No. 2, including all attachments (if any) in its Bid by so indicating on page ITB-1 of the Invitation to Bid Form. Bids submitted without acknowledgment of receipt of this addendum will be considered nonconforming.

The following forms provided within the ITB Document must be included in submitted bids at bid opening.

- City of Ann Arbor Prevailing Wage Declaration of Compliance
- City of Ann Arbor Living Wage Ordinance Declaration of Compliance
- Vendor Conflict of Interest Disclosure Form
- City of Ann Arbor Non-Discrimination Ordinance Declaration of Compliance

Bids that fail to provide these completed forms listed above upon bid opening will be rejected as non-responsive and will not be considered for award.

I. CORRECTIONS/ADDITIONS/DELETIONS/CLARIFICATIONS

Changes to the Bid documents outlined below are referenced to a page or Section in which they appear conspicuously. The Bidder is to take note in its review of the documents and include these changes as they may affect work or details in other areas not specifically referenced here.

Item #1: Revised plan sheets 8, 37, and 40 are included in this addendum.

- Pg 8 – Infiltration Trench detail revised.
- Pg 37 – Trench backfill detail revised to IA.
- Pg 40 – Temporary water main interconnect between phases has been added.

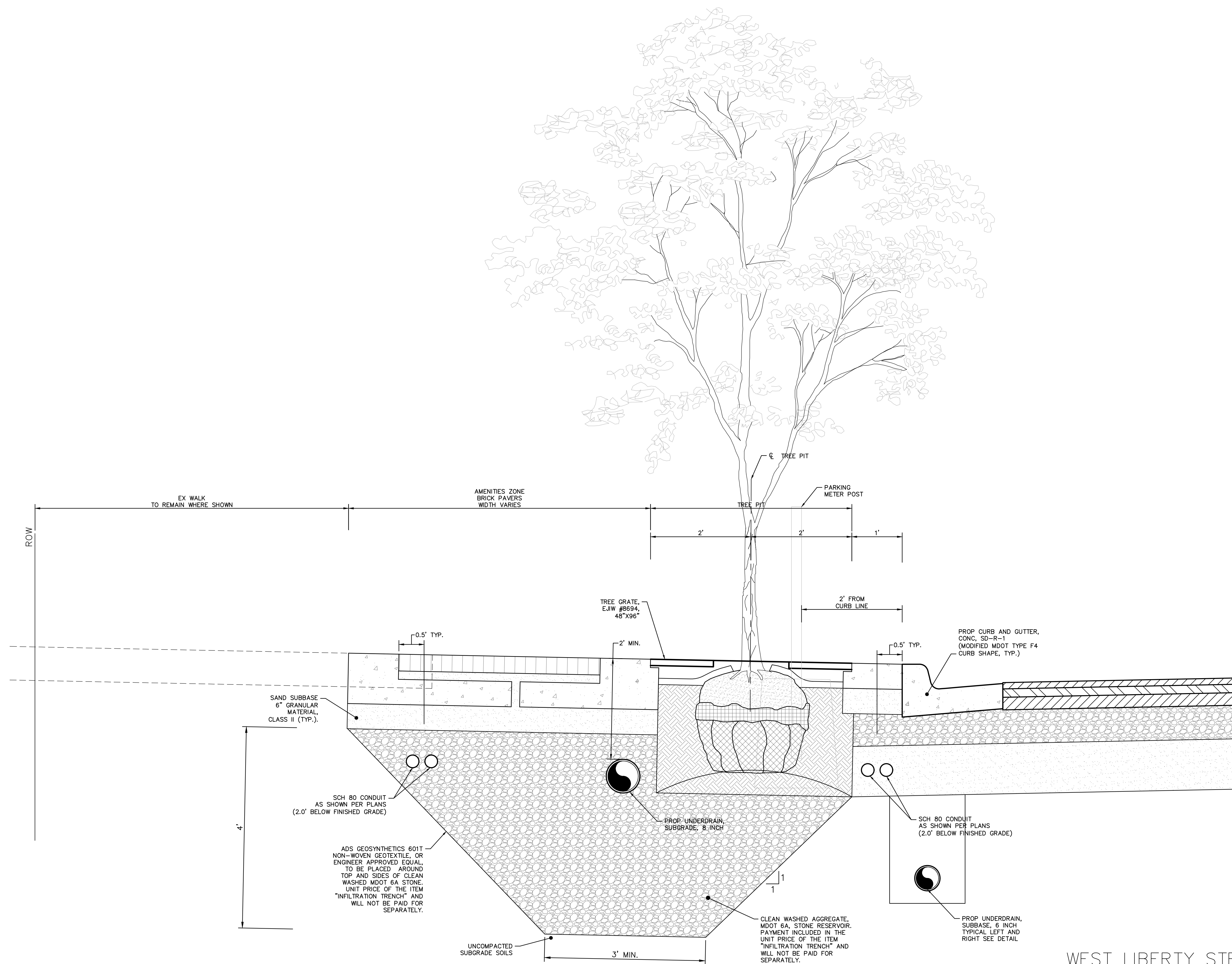
II. REQUEST FOR INFORMATION

1. If dewatering is required to install the underground utilities, what environmental controls will be required?
 - Response: Due to contaminations present, the water can not be discharged to the storm sewer or sanitary sewer, and must therefore be removed from the site.

2. Will the Pay Item 4047001 "Infiltration Trench" include payment for volumes of excavated material / backfill as necessary to install OSHA approve excavations? For example, the detail as shown on sheet 8 of the plans is not realistic. Based on the soil borings and insitu soils there is no possibility of vertical trench walls for this application. This may also increase the sidewalk removal and replacement limits.
 - Response: The trench wall detail has been revised. Update plan sheet included.

Bidders are responsible for any conclusions that they may draw from the information contained in the Addendum.

R:\2015034 Liberty - First to Main\Plan Production\2015034DET1.dwg Dwg Created: 8-May-17 - _g2 standard bw.stb - Plot Date: 8-May-17

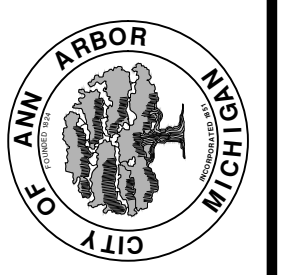


WEST LIBERTY STREET
TYPICAL TREE PIT SECTION
STA. 17+50 TO STA. 18+60 LEFT
N.T.S.



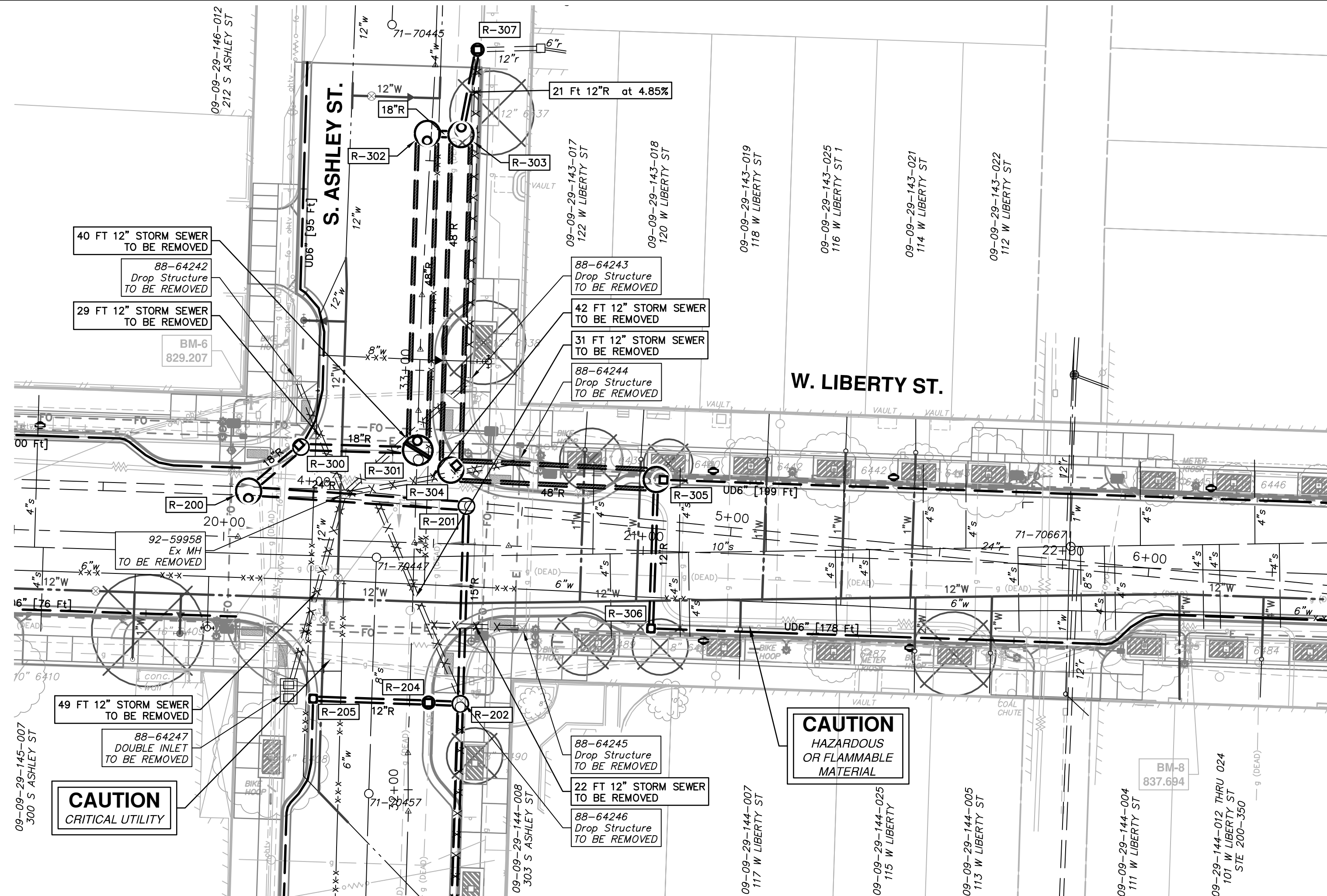
REV.	DESCRIPTION	DATE	CEC	CHECKED
00	ADDENDUM #2	05/08/17	CEC	CHECKED

CITY OF ANN ARBOR
PUBLIC SERVICES
301 EAST HURON STREET
ANN ARBOR, MI 48106-8647
www.a2gov.org

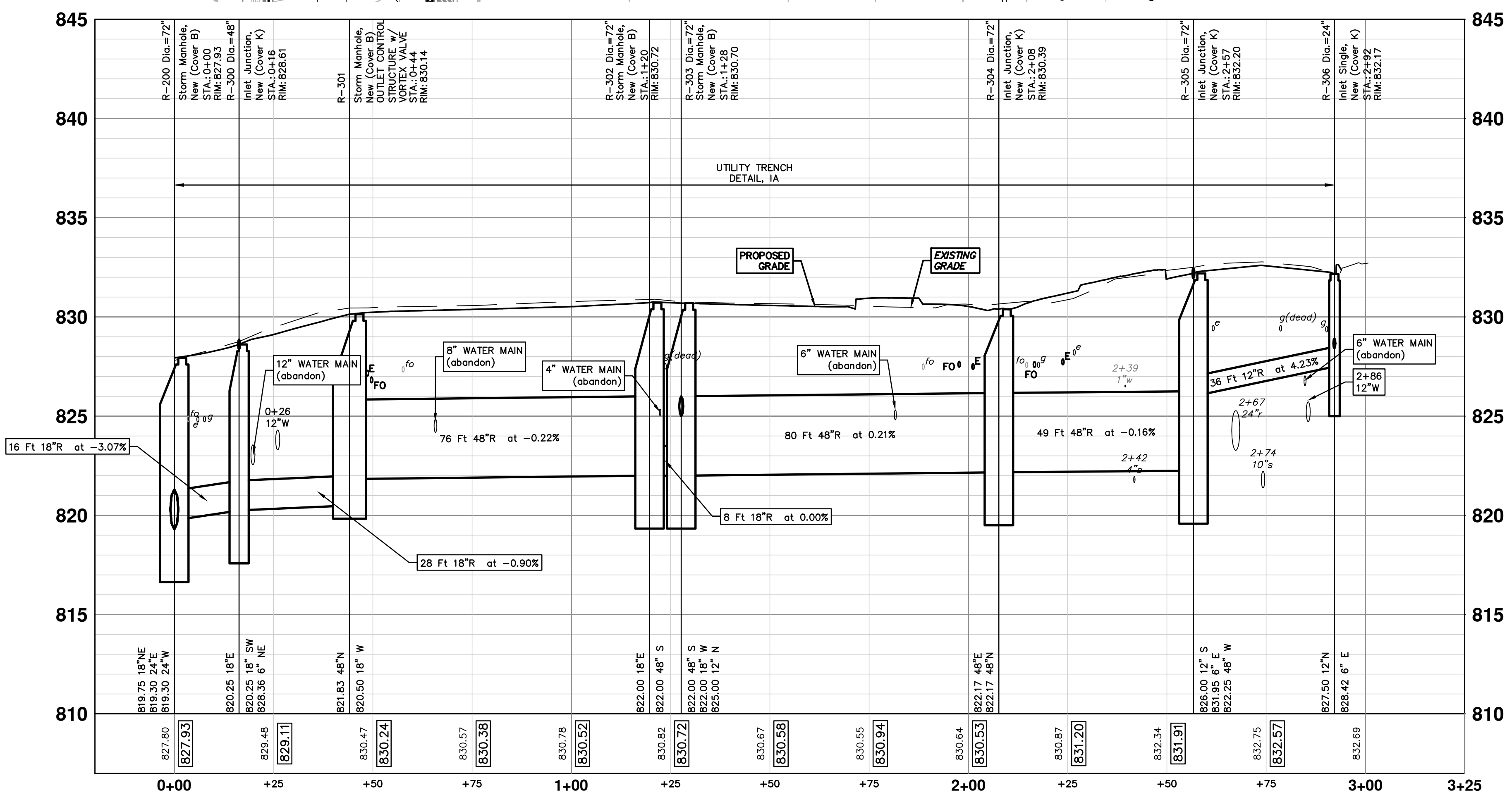


PROJECT MANAGEMENT - PUBLIC SERVICES - CITY OF ANN ARBOR
WEST LIBERTY STREET RECONSTRUCTION
S. FIRST ST. - N. MAIN ST.
STORMWATER TREE TRENCH DETAIL

SCALE: N/A
DRAWING No. 2015034-8



STORM SEWER STRUCTURE TABLE					
STRUCTURE	INVERT ELEVATION, SIZE & DIRECTION	TOP OF CASTING ELEVATION	DEPTH (Feet)	SIZE	APPLICATION / CONSTRUCTION
R-200	18" NE 819.75 24" E 819.30 24" W 819.30	827.93	10.63	72" Dia.	Storm Manhole, New (Cover B)
R-300	18" SW 820.25 6" NE 828.36 18" E 820.25	828.61	10.36	48" Dia.	Inlet Junction, New (Cover K)
R-301	18" W 820.50 48" N 821.83	830.14	9.64	84" Dia.	Storm Manhole, New (Cover B) OUTLET CONTROL STRUCTURE w/ VORTEX VALVE
R-302	48" S 822.00 18" E 822.00	830.72	10.72	72" Dia.	Storm Manhole, New (Cover B)
R-303	48" S 822.00 18" W 822.00 12" N 825.00	830.70	10.70	72" Dia.	Storm Manhole, New (Cover B)
R-304	48" E 822.17 48" N 822.17	830.39	10.22	72" Dia.	Inlet Junction, New (Cover K)
R-305	12" S 826.00 6" E 831.95 48" W 822.25	832.20	11.95	72" Dia.	Inlet Junction, New (Cover K)
R-306	6" E 828.42 12" N 827.50	832.17	6.67	24" Dia.	Inlet Single, New (Cover K)
R-307	12" E 827.45 12" S 826.00	830.75	6.75	36" Dia.	Inlet Junction, New (Cover K)



PROJECT MANAGEMENT - PUBLIC SERVICES - CITY OF ANN ARBOR
WEST LIBERTY STREET RECONSTRUCTION S.
FIRST ST. - N. MAIN ST.
 STORM SEWER PLAN AND PROFILE
 S ASHLEY ST - STORM NORTH

SCALE PLAN: 1" = 20'
 PROFILE: 1" = 2'

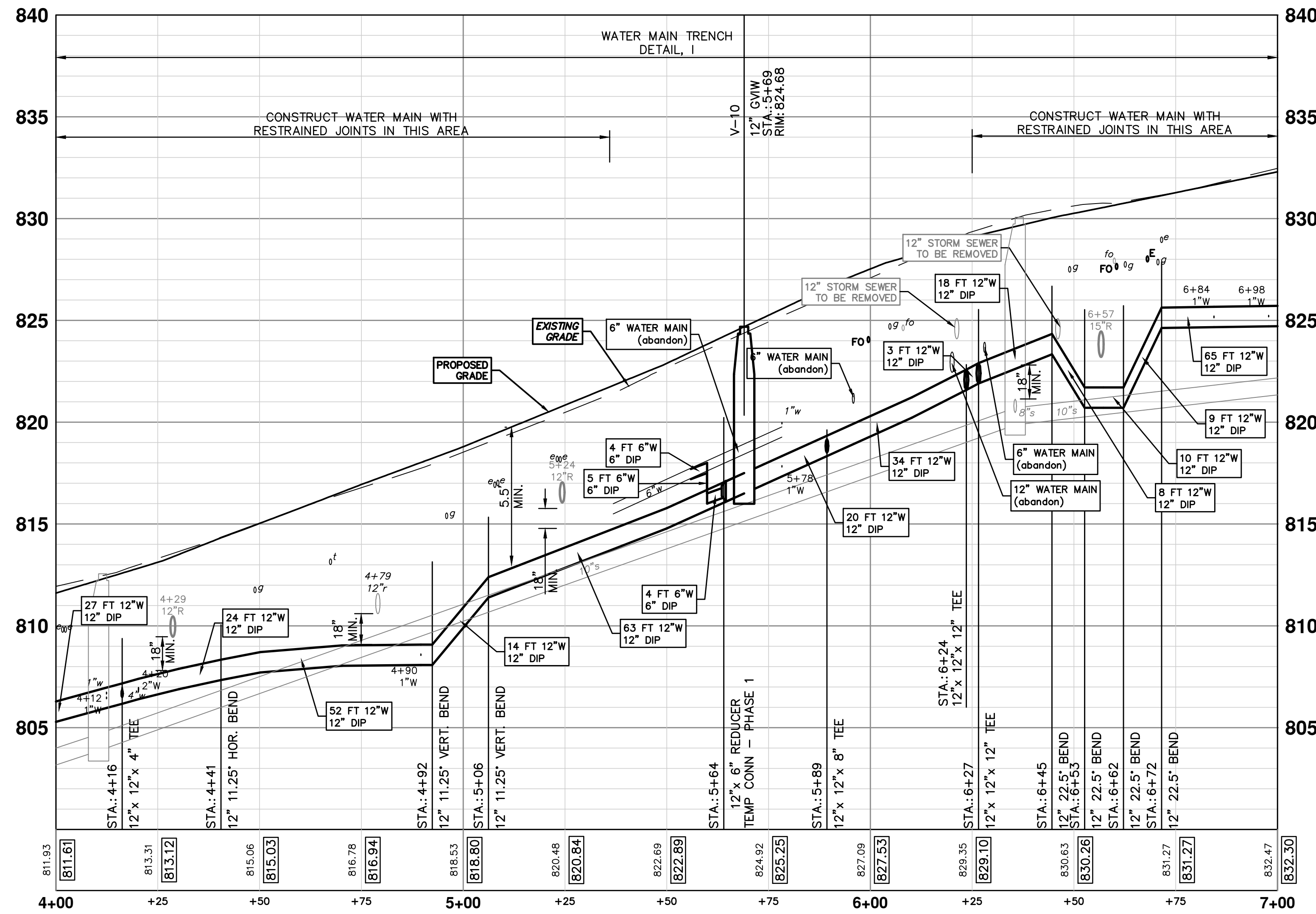
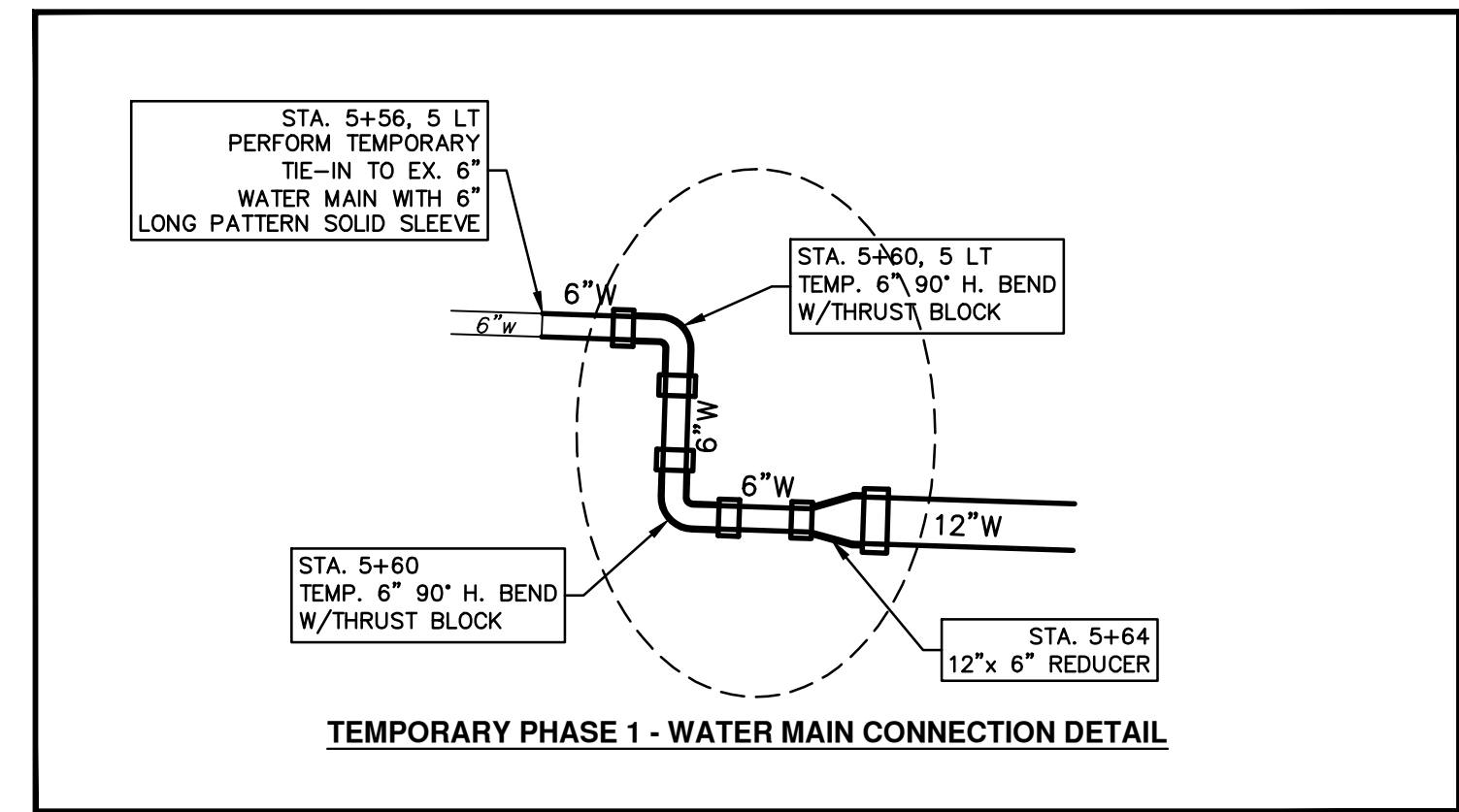
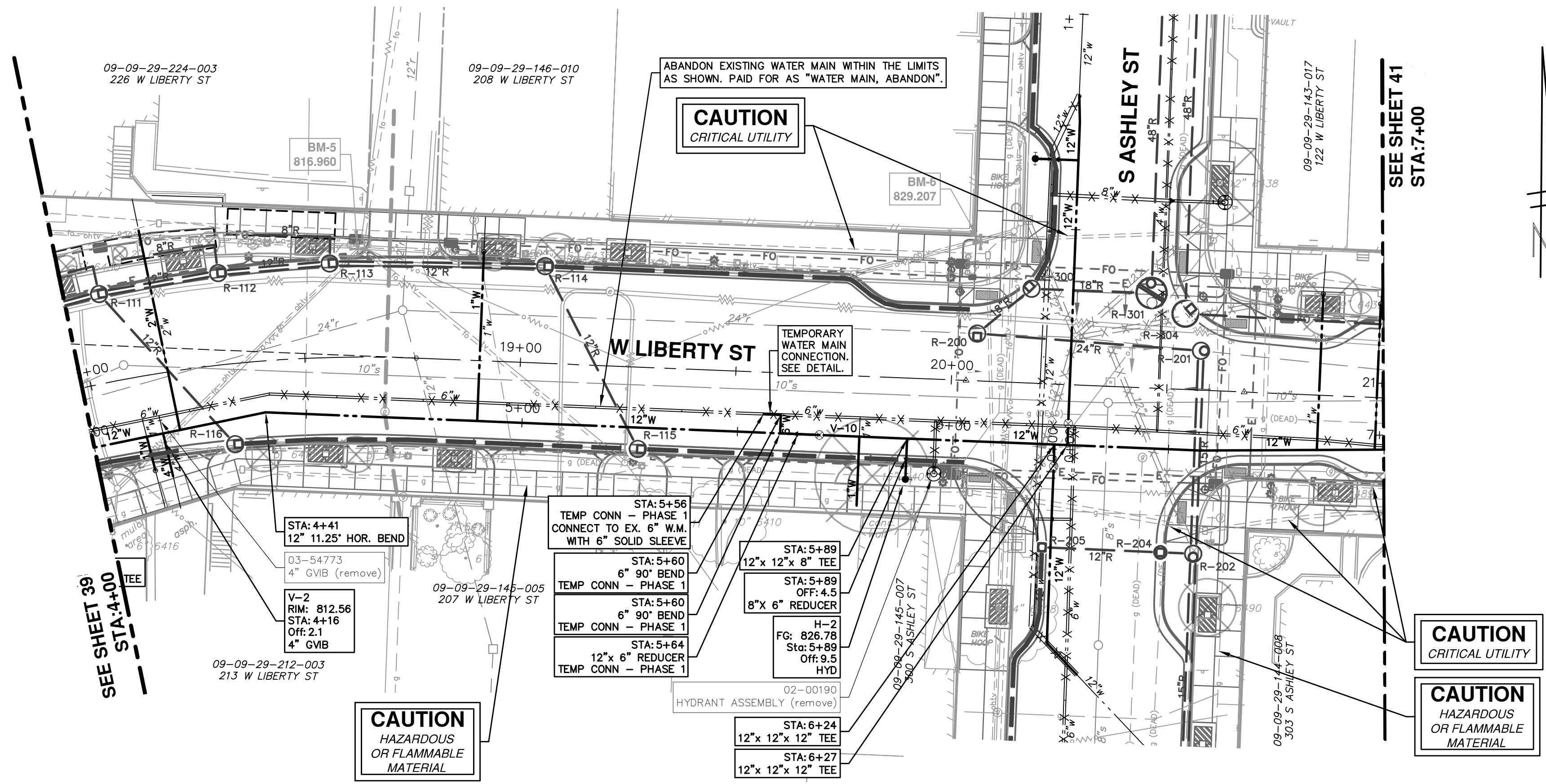
DRAWING NO. **2015034-37**

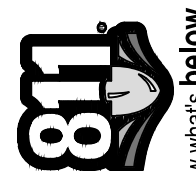
SHEET No. **37 OF 63**

811
 Know what's below.
 Call before you dig.

CITY OF ANN ARBOR
 PUBLIC SERVICES
 301 EAST HURON STREET
 P.O. BOX 8647
 ANN ARBOR MI 48107-8647
 www.a3gov.org


REV. 00
 ADDENDUM #2
 DATE 05/08/17
 DRAWN CEC
 CHECKED CEC





Know what's below.
Call before you dig.

REV.	DATE	DESCRIPTION
00	05/08/17	CEC DRAWN
01		CEC CHECKED



CITY OF ANN ARBOR
PUBLIC SERVICES
301 EAST HURON STREET
ANN ARBOR, MI 48106-0667
www.a2gov.org

PROJECT MANAGEMENT - PUBLIC SERVICES - CITY OF ANN ARBOR
WEST LIBERTY STREET RECONSTRUCTION
S. FIRST ST. - N. MAIN ST.
 LIBERTY ST. WATER MAIN PLAN AND PROFILE
 STA. 4+00 TO STA. 7+00

SCALE PLAN: 1" = 20'
PROFILE: 1" = 4'

DRAWING NO.
2015034-40

SHEET No.
40 OF 63