

LEGEND

838	EXIST. CONTOUR
×836.2	EXIST. SPOT ELEVATION
U.P.	EXIST. UTILITY POLE
GUY WIRE	GUY WIRE
OH	EXIST. OVERHEAD UTILITY LINE
*	EXIST. LIGHT POLE
t	EXIST. TELEPHONE LINE
e	EXIST. ELECTRIC LINE
g	EXIST. GAS LINE
g	EXIST. GAS VALVE
f.o.	EXIST. FIBER OPTIC LINE
w	EXIST. WATER MAIN
h	EXIST. HYDRANT
g	EXIST. GATE VALVE IN BOX
g	EXIST. GATE VALVE IN WELL
r	EXIST. STORM SEWER
o	EXIST. CATCH BASIN OR INLET
s	EXIST. SANITARY SEWER
o	EXIST. CLEANOUT
⊗	PEDESTRIAN X-ING SIGNAL
□ T.S.C.B.	TRAFFIC SIGNAL CONTROL BOX
⊗	SIGN
⊗	RAILROAD CROSSING SIGN
⊗	POST
⊗	WELL
⊗	SINGLE TREE
⊗	FENCE
⊗	TREE OR BRUSH LIMIT
⊗	EXIST. BOULDER
⊗	FOUND IRON PIPE
⊗	FOUND MONUMENT
⊗	FOUND IRON ROD
⊗	CONTROL PT.

BENCHMARKS

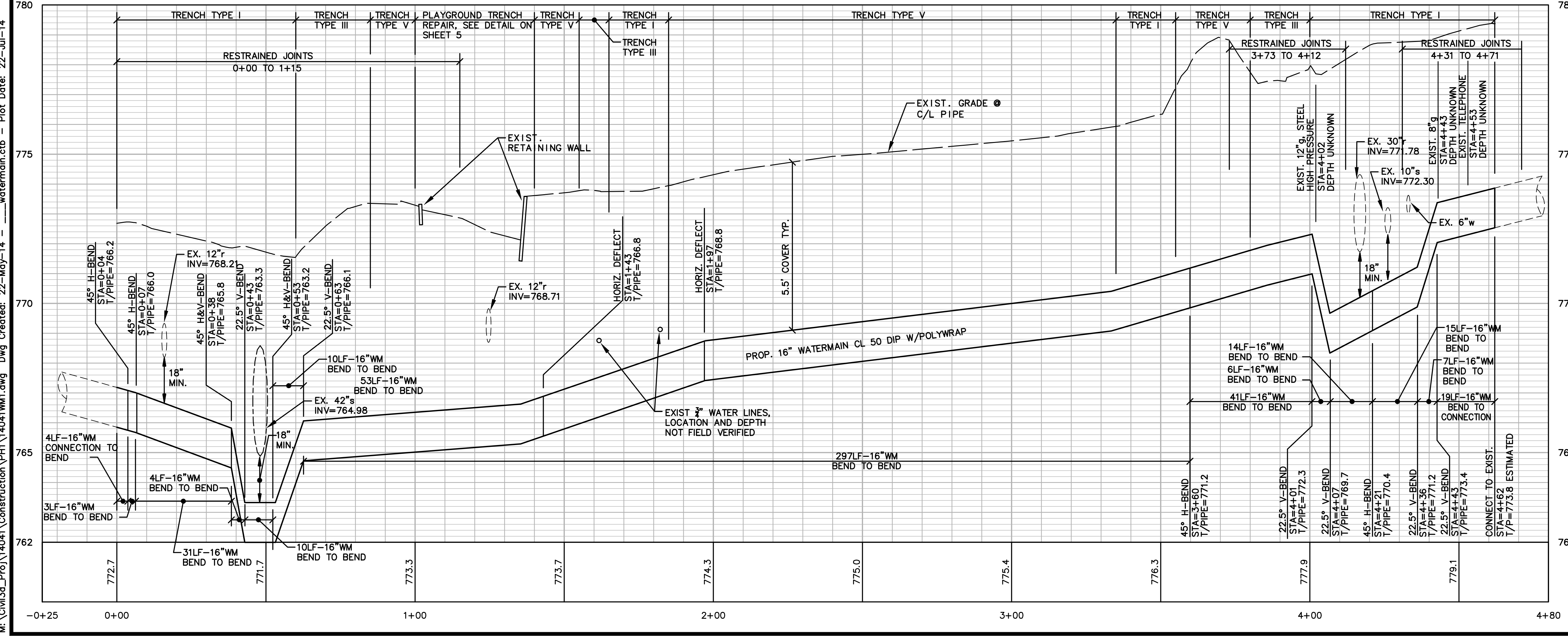
B.M. #4 - BENCH-TIE IN NORTH FACE OF UTILITY POLE AT THE NORTHWEST CORNER OF 4TH AVENUE & SUMMIT STREET. ELEVATION = 773.29' (NAVD88)

B.M. #5 - BENCH-TIE IN NORTHWEST FACE OF UTILITY POLE ON THE WEST SIDE OF 5TH AVENUE AND THE CENTERLINE OF SUMMIT STREET. ELEVATION = 782.15' (NAVD88)

PRIOR TO THE START OF CONSTRUCTION, THE CONTRACTOR SHALL PERFORM EXPLORATORY EXCAVATION TO VERIFY THE LOCATION AND DEPTH OF EXISTING MAIN. COST TO BE INCLUDED IN THE WATER MAIN INSTALLATION AND NOT PAID FOR SEPARATELY.

PRIOR TO THE START OF CONSTRUCTION, THE CONTRACTOR SHALL PERFORM EXPLORATORY EXCAVATION TO VERIFY THE LOCATION AND DEPTH OF EXISTING MAIN. COST TO BE INCLUDED IN THE WATER MAIN INSTALLATION AND NOT PAID FOR SEPARATELY.

- ### WATER MAIN CONSTRUCTION NOTES:
- FOR EROSION CONTROL ITEMS SEE SHEET 4.
 - ALL WATER MAIN WORK SHALL BE STAGED IN ACCORDANCE WITH THE DETAILED SPECIFICATION AND AS DIRECTED BY THE ENGINEER. THE CONTRACTOR SHALL BE RESPONSIBLE FOR COORDINATING ALL WORK, CONSTRUCTION METHODS, AND EQUIPMENT TO COMPLY WITH THE CONTRACT REQUIREMENTS.
 - THE CONTRACTOR SHALL CAREFULLY PROTECT FROM DAMAGE OR INJURY DURING CONSTRUCTION OPERATIONS ALL UTILITIES NOT DESIGNATED FOR REMOVAL OR ABANDONMENT. EXISTING FACILITIES NOT DESIGNATED FOR REMOVAL OR ABANDONMENT BUT WHICH ARE DAMAGED BY THE CONTRACTOR'S OPERATION SHALL BE REPAIRED OR REPLACED BY THE CONTRACTOR AT HIS SOLE EXPENSE, IN A MANNER THAT IS APPROVED BY THE ENGINEER.
 - THE EXISTING UTILITIES SHOWN ON THESE PLANS REPRESENT THE BEST INFORMATION AVAILABLE AS OBTAINED THROUGH SURVEYS AND/OR EXISTING PLANS. THIS INFORMATION DOES NOT RELIEVE THE CONTRACTOR OF THE RESPONSIBILITY TO BE SATISFIED AS TO ITS ACCURACY AND/OR THE LOCATION OF EXISTING UTILITIES. IF STORM, SANITARY, OR WATER MAINS CROSS WITH LESS THAN 18" CLEARANCE, THEY SHALL BE SADDLED (SEE UTD DETAIL #3). IF STORM, SANITARY, OR WATER MAINS CROSS OTHER UTILITIES, CONTACT THEIR RESPECTIVE OWNERS FOR INFORMATION ON HOW TO PROCEED. PAYMENT FOR THE COORDINATION EFFORTS, CONCRETE SADDLES, AND ANY OTHER ASSOCIATED ITEMS SHALL BE INCLUDED IN THE RELATED STORM, SANITARY, OR WATER MAIN ITEMS AND SHALL NOT BE PAID FOR SEPARATELY.
 - THE CONTRACTOR WILL ONLY BE ALLOWED TO SHUT DOWN THE EXISTING 16" WATER MAIN FOR A MAXIMUM DURATION OF 8 HOURS IN ANY ONE SHUTDOWN, IN ANY GIVEN 24 HOUR PERIOD, EXCEPT WHEN DOING FINAL TESTING, WHEN IT CAN BE SHUT DOWN FOR TWO WEEKS MAXIMUM. SHUTDOWN OF THE EXISTING WATERMAIN MUST BE SCHEDULED WITH THE ENGINEER A MINIMUM OF 3 WORKING DAYS IN ADVANCE OF THE INTENDED SHUTDOWN AND CONSTRUCTION OF THE WATER MAIN WILL NOT BE ALLOWED TO TAKE PLACE ON A SATURDAY OR A SUNDAY.
 - THE CONTRACTOR SHALL PROPOSE A METHOD(S) AND EQUIPMENT FOR THE REVIEW AND APPROVAL OF THE ENGINEER TO BE USED FOR THE FLUSHING OF CHLORINATED WATER FROM PROPOSED WATER MAIN INTO EXISTING SANITARY SEWERS. CHLORINATED WATER SHALL NOT BE ALLOWED IN STORM SEWERS OR BIOSWALES, ANY AND ALL MEASURES NECESSARY TO COMPLY WITH THIS REQUIREMENT SHALL BE INCLUDED IN THE COST OF THE WATER MAIN INSTALLATION AND WILL NOT BE PAID FOR SEPARATELY.
 - UPON COMPLETION OF THE 16" WATER MAIN CONSTRUCTION AND HYDROSTATIC AND BACTERIOLOGICAL TESTING, THE CONTRACTOR SHALL REMOVE THE TEMPORARY WATER MAIN TESTING AND CONNECTION ASSEMBLY AND CONSTRUCT THE PERMANENT WATER MAIN AS SHOWN ON THE PLAN SHEET. ALL WORK ASSOCIATED WITH REMOVING THE TEMPORARY TESTING CONNECTION AND CONSTRUCTING THE FINAL PERMANENT CONNECTION WILL NOT BE PAID FOR SEPARATELY, BUT SHALL BE INCLUDED IN THE RELATED ITEMS OF WORK.



Know what's below.
Call before you dig.

REV.	DESCRIPTION	DATE	DRAWN	CHECKED

CITY OF ANN ARBOR
PUBLIC SERVICE
301 EAST WILSON STREET
ANN ARBOR, MI 48107-8847
www.a2gov.org

ANN ARBOR
MICHIGAN

PROJECT MANAGEMENT - PUBLIC SERVICES - CITY OF ANN ARBOR

SUMMIT STREET
16" WATER MAIN
REPLACEMENT THROUGH WHEELER PARK
WATER MAIN PLAN AND PROFILE

SCALE PLAN: 1"=20'
PROFILE: 1"=2'

DRAWING No.
2014-022-WM1

SHEET No.
5 OF 7

M:\Civ\3d_Proj\4041\Construction\PH1\14041WM1.dwg Dwg Created: 22-May-14 -- watermain.ctb -- Plot Date: 22-Jul-14