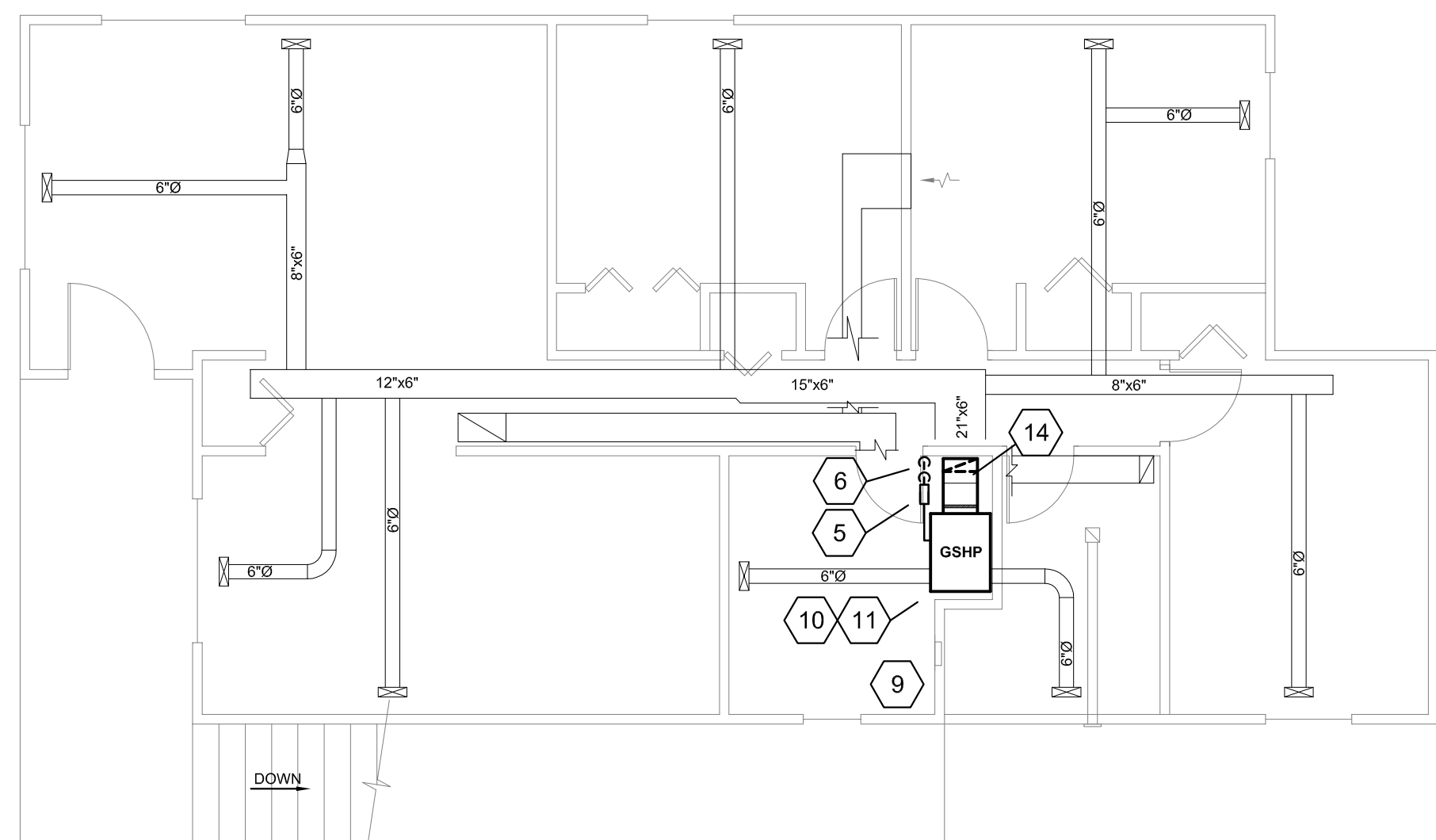
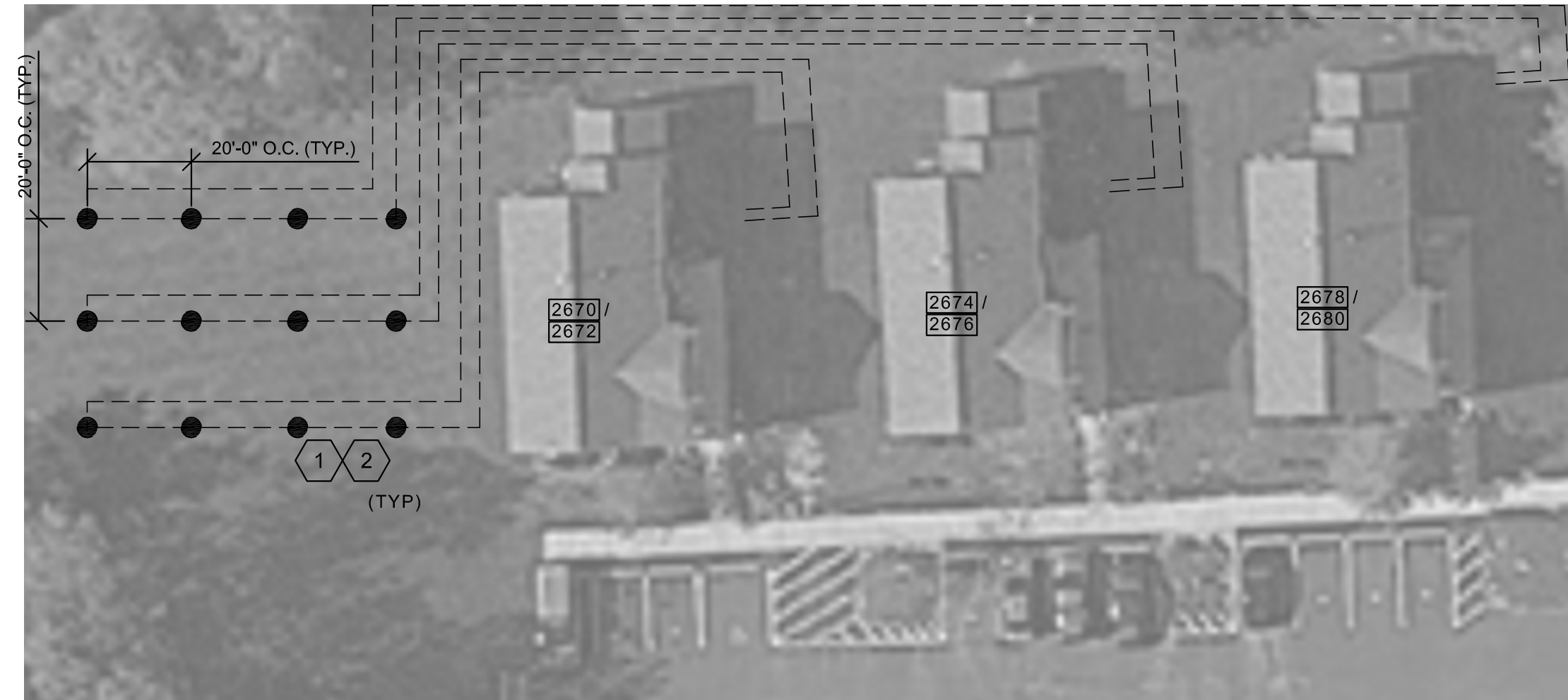


**FIRST FLOOR HVAC PLAN**  
SCALE: 3/16"=1'-0"



**SECOND FLOOR PARTIAL HVAC PLAN**  
SCALE: 3/16"=1'-0"



**MALLETT'S CREEK SITE PLAN**  
SCALE: NONE

PUMP SCHEDULE (P)												
MARK	LOCATION	TYPE	SERVICE	CAPACITY GPM	TDH (FT)	RPM	DESIGN TEMP	HP	VOLTS/PH/Hz	MANUFACTURER MODEL NO	REMARKS	
HVAC-2670	UNIT 2670	INLINE	25% PROP. GLYCOL	9	30	-	45/120	1/6	120/1/60	GRUNDROS (2) UP26-99	SEE NOTES	
HVAC-2672	UNIT 2672	INLINE	25% PROP. GLYCOL	9	30	-	45/120	1/6	120/1/60	GRUNDROS (2) UP26-99	SEE NOTES	
HVAC-2674	UNIT 2674	INLINE	25% PROP. GLYCOL	9	30	-	45/120	1/6	120/1/60	GRUNDROS (2) UP26-99	SEE NOTES	
HVAC-2676	UNIT 2676	INLINE	25% PROP. GLYCOL	9	30	-	45/120	1/6	120/1/60	GRUNDROS (2) UP26-99	SEE NOTES	
HVAC-2678	UNIT 2678	INLINE	25% PROP. GLYCOL	9	30	-	45/120	1/6	120/1/60	GRUNDROS (2) UP26-99	SEE NOTES	
HVAC-2680	UNIT 2680	INLINE	25% PROP. GLYCOL	9	30	-	45/120	1/6	120/1/60	GRUNDROS (2) UP26-99	SEE NOTES	

NOTES:  
1. INFORMATION PROVIDED IS ONLY PRELIMINARY AND TO EXPRESS PROJECT INTENT.  
2. CONTRACTOR TO DESIGN AND SUBMIT PUMP SELECTION INFORMATION FOR APPROVAL BEFORE PURCHASING.

HEAT PUMP SCHEDULE																																				
MARK	LOCATION	AREA SERVED	MIN OA CFM	FAN				FILTER		COOLING CAPACITY								HEATING CAPACITY					UNIT SIZE			ELECTRIC	OPER WT (LBS)	MANUFACTURER MODEL NO.	REMARKS							
				CFM	ESP	DIA	HP	VOLT/PH/Hz	TYPE	EFF %	MBH	GPM	EWT	LWT	PD	EAT (°F, DB)	EAT (°F, WB)	LAT (°F, DB)	LAT (°F, WB)	EER	MBH	EAT	LAT	EWT	LWT					HEATER KW	MBH	COP	L	W	H	FLA
HVAC-2670	UNIT 2670	UNIT 2670	60	1200	1"	-	1/2"	208-230/1/60	2" MERV 8	50%	38.0	9.0	70	90	3.8	80	67	57	56	17.2	28.0	68	90	50	44	10	34.0	3.8	26.0	21.5	47.25	-	208-230/1/60	290	BOSCH CE0351CFCLB	SEE NOTES
HVAC-2672	UNIT 2672	UNIT 2672	60	1200	1"	-	1/2"	208-230/1/60	2" MERV 8	50%	38.0	9.0	70	90	3.8	80	67	57	56	17.2	28.0	68	90	50	44	10	34.0	3.8	26.0	21.5	47.25	-	208-230/1/60	290	BOSCH CE0351VTCFLT	SEE NOTES
HVAC-2674	UNIT 2674	UNIT 2674	60	1200	1"	-	1/2"	208-230/1/60	2" MERV 8	50%	38.0	9.0	70	90	3.8	80	67	57	56	17.2	28.0	68	90	50	44	10	34.0	3.8	26.0	21.5	47.25	-	208-230/1/60	290	BOSCH CE0351CFCLB	SEE NOTES
HVAC-2676	UNIT 2676	UNIT 2676	60	1200	1"	-	1/2"	208-230/1/60	2" MERV 8	50%	38.0	9.0	70	90	3.8	80	67	57	56	17.2	28.0	68	90	50	44	10	34.0	3.8	26.0	21.5	47.25	-	208-230/1/60	290	BOSCH CE0351VTCFLT	SEE NOTES
HVAC-2678	UNIT 2678	UNIT 2678	60	1200	1"	-	1/2"	208-230/1/60	2" MERV 8	50%	38.0	9.0	70	90	3.8	80	67	57	56	17.2	28.0	68	90	50	44	10	34.0	3.8	26.0	21.5	47.25	-	208-230/1/60	290	BOSCH CE0351CFCLB	SEE NOTES
HVAC-2680	UNIT 2680	UNIT 2680	60	1200	1"	-	1/2"	208-230/1/60	2" MERV 8	50%	38.0	9.0	70	90	3.8	80	67	57	56	17.2	28.0	68	90	50	44	10	34.0	3.8	26.0	21.5	47.25	-	208-230/1/60	290	BOSCH CE0351VTCFLT	SEE NOTES

NOTES:  
1. PROVIDE UNIT WITH INSULATED ENCLOSURE (CLOSED CELL FROM INSULATION), FRONT ACCESS, AIR AND WATER FREEZE PROTECTION, TRANSFORMER (75VA), SOFT START, SMOKE DETECTOR, SUPPLEMENTAL ELECTRIC HEATER, AND 10 YEAR WARRANTY ON PARTS AND LABOR.  
2. CONTRACTOR TO SUBMIT EQUIPMENT SELECTION INFORMATION FOR APPROVAL BEFORE PURCHASING.

**GENERAL NOTES:**

- SEE GENERAL NOTES ON TITLE SHEET.

**KEY NOTES:**

- PRIOR TO STARTING ANY SITE WORK, CONTRACTOR TO CONTACT "MISS DIG" AND VERIFY LOCATIONS OF ALL EXISTING UNDERGROUND UTILITIES AND PIPING.
- PRELIMINARY/PROPOSED BOREHOLE LOCATIONS. FINAL BOREHOLE LOCATIONS TO BE DETERMINED BY CONTRACTOR AND APPROVED BY OWNER ONCE LOCATIONS OF UNDERGROUND UTILITIES AND PIPING HAVE BEEN VERIFIED.
- PRELIMINARY ROUTING OF UNDERGROUND PIPING. CONTRACTOR TO VERIFY ROUTING BASED ON LOCATIONS OF UNDERGROUND UTILITIES. SEE SCHEMATIC ON DRAWING S2.0.
- INSTALL FLOW CENTER (ABOVE NEW RETURN DUCT) NEXT TO HEAT PUMP UNIT. CONTRACTOR TO ROUTE PIPING FROM CRAWL SPACE AND UP TO UNITS.
- INSTALL FLOW CENTER NEXT TO HEAT PUMP. CONTRACTOR TO PROVIDE SUPPORTS AS REQUIRED FOR MOUNTING.
- CONTRACTOR TO SEAL ALL WALL AND FLOOR PENETRATIONS TO MAINTAIN EXISTING FIRE RATING.
- PIPING SHALL BE ROUTED UNDERGROUND THROUGH FOUNDATION WALL AND INTO CRAWL SPACE. CONTRACTOR TO INSTALL SLEEVE IN FOUNDATION WALL PER DETAIL ON DRAWING S2.0.
- INSULATE ALL PIPING PER SPECIFICATIONS.
- EXISTING RECESSED ELECTRICAL PANEL (100A)
- CONTRACTOR TO PROVIDE AND INSTALL NEW THERMOSTAT (ECO-BEE) FOR HEAT PUMP.
- SPACE IS LIMITED SO NEW HEAT PUMP, ASSOCIATED DUCT WORK, AND EQUIPMENT MUST FIT IN EXISTING 28"W x 58"L MECHANICAL SPACE.
- CONTRACTOR TO REMOVE EXISTING BOARD INSULATION ON RETURN AIR PLENUM IN CRAWL SPACE. INSTALL METAL PANNING AND REINSULATE. (TYP FOR ALL FIRST FLOOR UNITS)
- REMOVE EXISTING RETURN AIR DUCT AND PATCH FLOOR. INSTALL RETURN AIR DUCT AS SHOWN (WITH FLEX CONNECTION). NEW ELBOW TO BE INSTALLED WITH TURNING VANES.
- REMOVE EXISTING RETURN AIR DUCT. INSTALL NEW RETURN AIR DUCT AS SHOWN (WITH FLEX CONNECTION). NEW RADIUS ELBOW OR TURNING VANES.

**LEGEND:**

- BOREHOLE (PRELIMINARY LOCATION)
- AIR FLOW
- ⊠ SUPPLY AIR DIFFUSER
- ⊞ RETURN AIR GRILLE
- ∅ DIAMETER
- XXX/XXX FIRST FLOOR/ SECOND FLOOR
- ⊥ ELECTRICAL PANEL (RECESSED)



**SITE PLAN**  
SCALE: NONE

**NORSTAR**  
Norstar  
200 South Division Street  
Buffalo, NY 14204  
PH: (716)847-1098 FX: (716)847-1668  
www.norstarus.com

**Process Results**  
THE ART OF ENGINEERING  
Process Results, Inc.  
201 South Ann Arbor St.  
Saline, MI 48176  
PH: 734.429.8900 FX: 734.429.8901  
www.processresults.com

B	ISSUED FOR BIDS	8/20/14
A	REVIEW	7/22/14
△	REVISION	DATE
	PLOT DATE:	08/21/2014 9:38 AM
	DRAWN BY:	DMP
	REVIEWED BY:	DWN
	PROJECT MANAGER:	DWN
	FILE:	

**AAHC GEOTHERMAL**  
ANN ARBOR, MICHIGAN  
**MALLETT'S CREEK SITE PLAN**

MECHANICAL  
MALLETT'S CREEK  
SITEPLAN