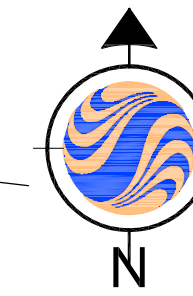




Know what's Below.  
Call before you dig.

**NOTE:**

THE LOCATIONS AND ELEVATIONS OF EXISTING UNDERGROUND UTILITIES AS SHOWN ON THIS DRAWING ARE ONLY APPROXIMATE. NO GUARANTEE IS EITHER EXPRESSED OR IMPLIED AS TO THE COMPLETENESS OR ACCURACY THEREOF. THE CONTRACTOR SHALL BE RESPONSIBLE FOR CONTACTING MISS DIG PRIOR TO CONSTRUCTION.



**Stantec**

Copyright Reserved

The Contractor shall verify and be responsible for all dimensions. DO NOT scale the drawing - any errors or omissions shall be reported to Stantec without delay. The Copyrights to all designs and drawings are the property of Stantec. Reproduction or use for any purpose other than that authorized by Stantec is forbidden.

Consultants

Legend

Notes

SURVEY DATUM: NGVD 29

Revision	By	Appd.	YY.MM.DD
BID SET	PJM	GRW	13.01.07
MDEO PERMIT SET	PJM	GRW	12.12.21
95% CLIENT REVIEW	PJM	GRW	12.12.14
MDEO PERMIT	PJM	GRW	12.12.04
60% CLIENT REVIEW	PJM	GRW	12.11.08
Issued	By	Appd.	YY.MM.DD

File Name:	BWA	PJM	PJM	12.10.11
116502-2C-101.DWG	Dwn.	Chkd.	Dsgn.	YY.MM.DD

Permit-Seal

Client/Project

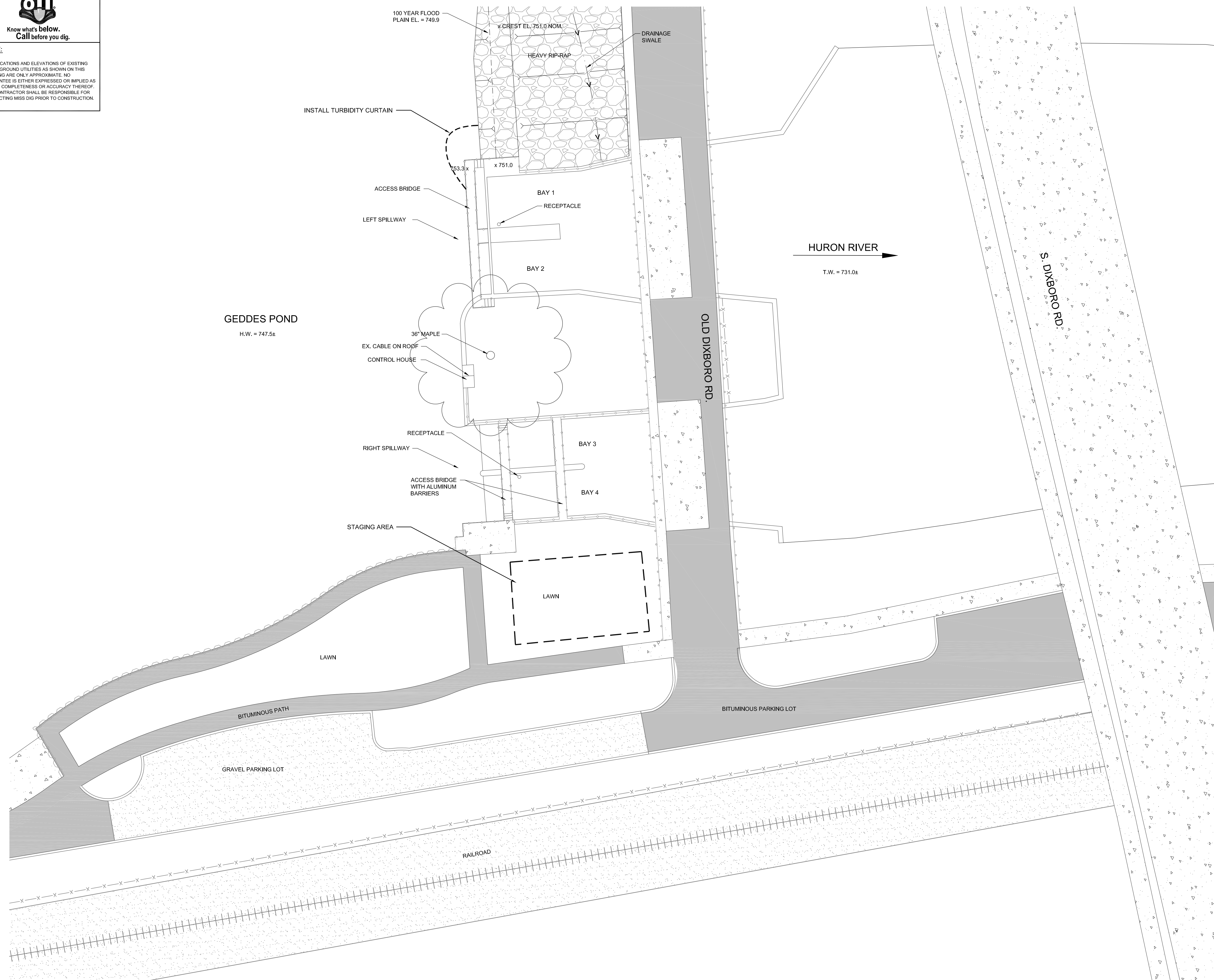
CITY OF ANN ARBOR

ARGO DAM & GEDDES DAM  
COATING AND MISCELLANEOUS REPAIRS  
Ann Arbor, Michigan

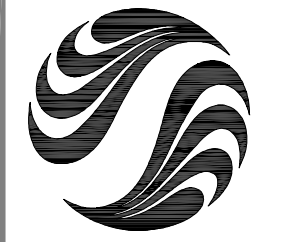
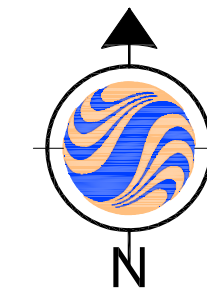
Title

GEDDES DAM  
EXISTING CONDITIONS/  
SITE PROTECTION

Project No.	Scale	
2075116502	1:20	
Drawing No.	Sheet	Revision
2C-101	8 of 12	0



C:\2075116502\2075116502.dwg 11/10/2011 10:00:00 AM 1:20 11/10/2011 10:00:00 AM



Stantec Consulting Michigan Inc.  
 3754 Ranchero Drive  
 Ann Arbor MI U.S.A.  
 48108-2771  
 Tel. 734.761.1010  
 Fax. 734.761.1200  
 www.stantec.com

Copyright Reserved  
 The Contractor shall verify and be responsible for all dimensions. DO NOT scale the drawing - any errors or omissions shall be reported to Stantec without delay.  
 The Copyrights to all designs and drawings are the property of Stantec. Reproduction or use for any purpose other than that authorized by Stantec is forbidden.

Consultants

Legend

Notes

Revision	By	Appd.	YY.MM.DD
BID SET	PJM	GRW	13.01.07
MDEO PERMIT SET	PJM	GRW	12.12.21
95% CLIENT REVIEW	PJM	GRW	12.12.14
MDEO PERMIT	PJM	GRW	12.12.04
60% CLIENT REVIEW	PJM	GRW	12.11.08
Issued	By	Appd.	YY.MM.DD

File Name: 116502-2C-102.DWG	BWAFDA	PJM	PJM	12.10.11
	Dwn.	Chkd.	Dsgn.	YY.MM.DD

Permit-Seal

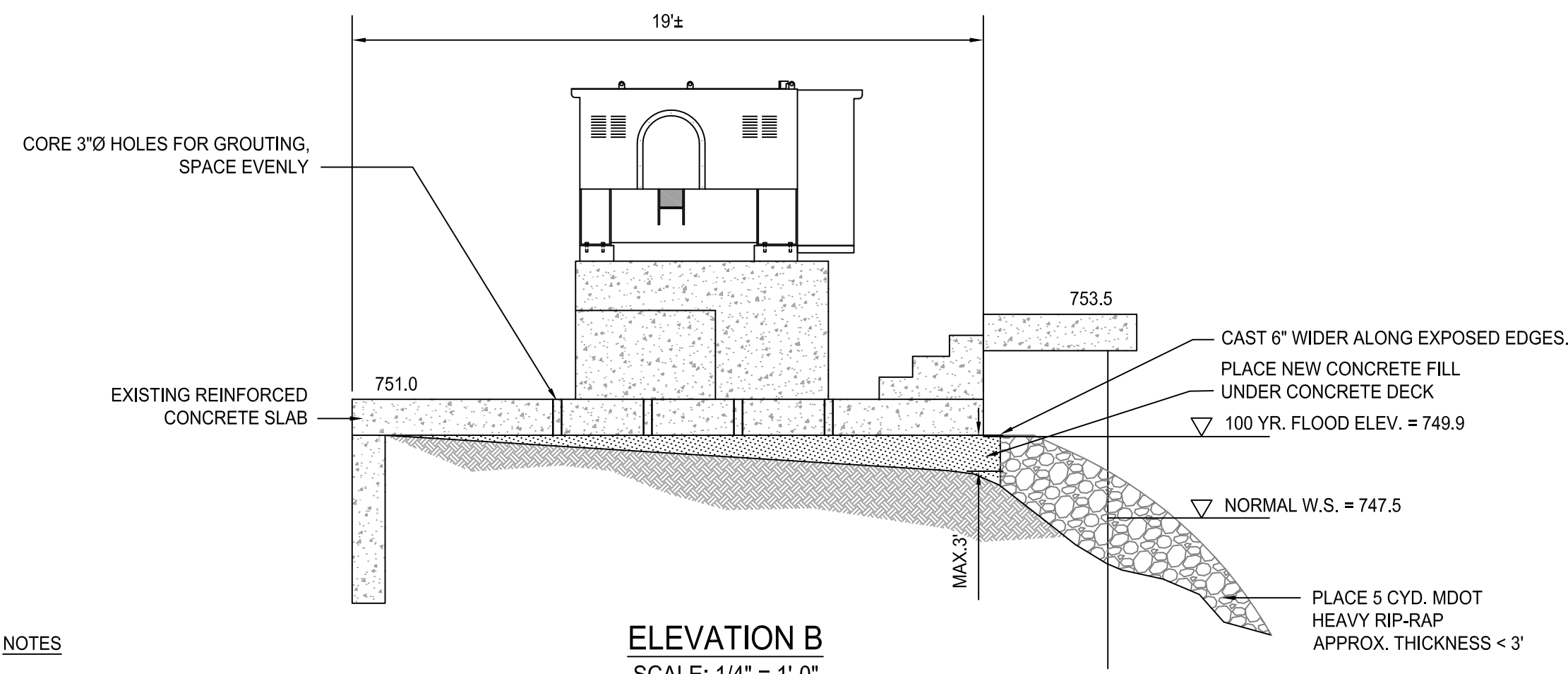
Client/Project  
 CITY OF ANN ARBOR

ARGO DAM & GEDDES DAM  
 COATING AND MISCELLANEOUS REPAIRS  
 Ann Arbor, Michigan

Title  
 GEDDES DAM  
 SITE WORK

Project No. 2075116502	Scale 1:20	Sheet 40	Revision 0
Drawing No.	Sheet	Revision	

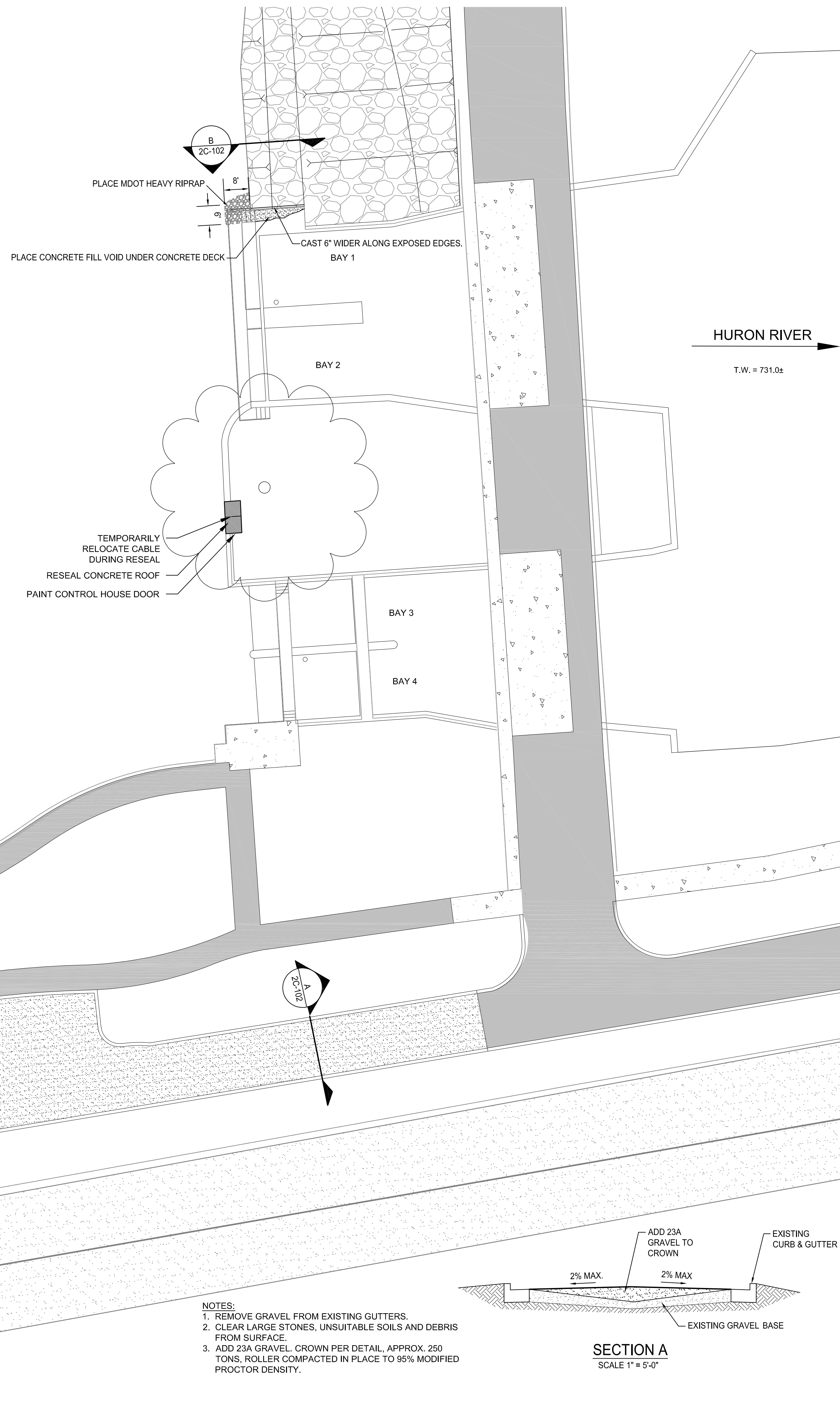
2C-102 9 of 12 0



**ELEVATION B**  
 SCALE: 1/4" = 1'-0"

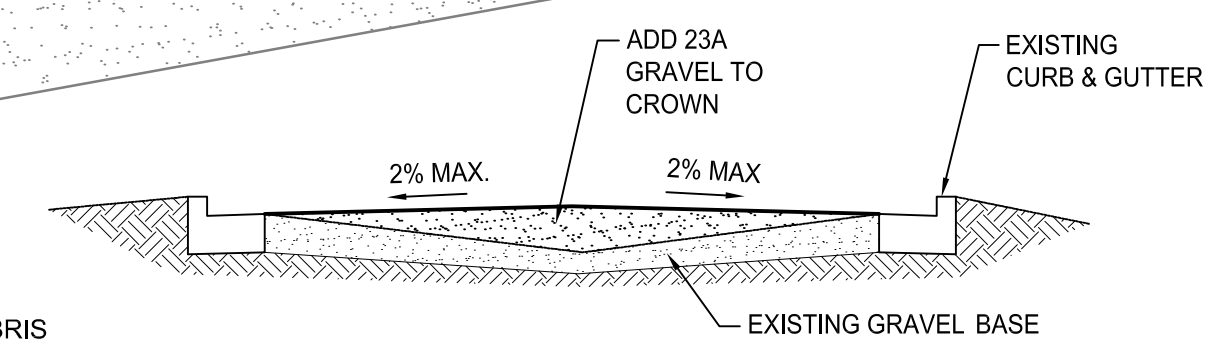
**NOTES**

1. TEMPORARILY REMOVE EXISTING RIPRAP A MINIMUM OF 1' CLEAR FROM FORMWORK FOR REPLACEMENT OF CONCRETE. REPLACE RIPRAP AFTER REMOVAL OF FORMS.
2. REMOVE TREE STUMPS WITHIN 3' OF EDGES OF DECK.
3. REMOVE ROCKS, LOOSE EARTH MATERIAL AND DEBRIS FROM GROUND WHERE CONCRETE IS TO BE PLACED.



ADD GRAVEL TO PARKING LOT

- NOTES:**
1. REMOVE GRAVEL FROM EXISTING GUTTERS.
  2. CLEAR LARGE STONES, UNSUITABLE SOILS AND DEBRIS FROM SURFACE.
  3. ADD 23A GRAVEL, CROWN PER DETAIL, APPROX. 250 TONS, ROLLER COMPACTED IN PLACE TO 95% MODIFIED PROCTOR DENSITY.

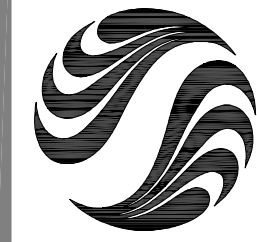


**SECTION A**  
 SCALE 1" = 5'-0"



**NOTE:**  
 THE LOCATIONS AND ELEVATIONS OF EXISTING UNDERGROUND UTILITIES AS SHOWN ON THIS DRAWING ARE ONLY APPROXIMATE. NO GUARANTEE IS EITHER EXPRESSED OR IMPLIED AS TO THE COMPLETENESS OR ACCURACY THEREOF. THE CONTRACTOR SHALL BE RESPONSIBLE FOR CONTACTING MISS DIG PRIOR TO CONSTRUCTION.

W:\3174\2011\116502\2011116502.dwg, 11/10/11 3:26:24 PM, 2011



**Stantec**

Copyright Reserved

The Contractor shall verify and be responsible for all dimensions. DO NOT scale the drawing - any errors or omissions shall be reported to Stantec without delay.  
 The Copyrights to all designs and drawings are the property of Stantec. Reproduction or use for any purpose other than that authorized by Stantec is forbidden.

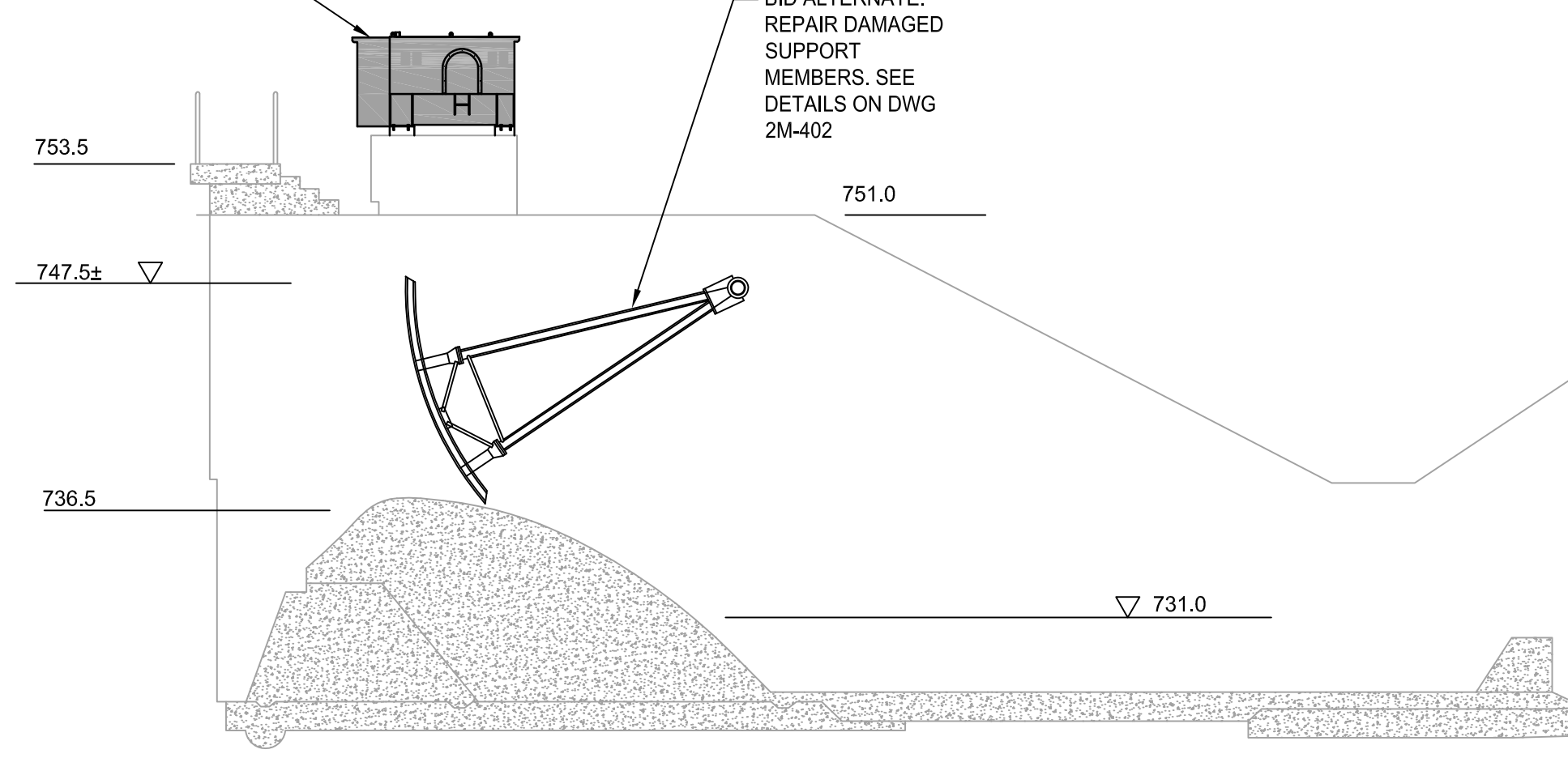
Consultants

Legend

- ITEMS TO BE PAINTED UNDER BASE BID
- DEMOLISH / REPAIR

Notes

REMOVE AND REPAINT GEAR HOUSINGS AND RELATED EQUIPMENT. SEE DWG 2M-402 FOR DETAILS

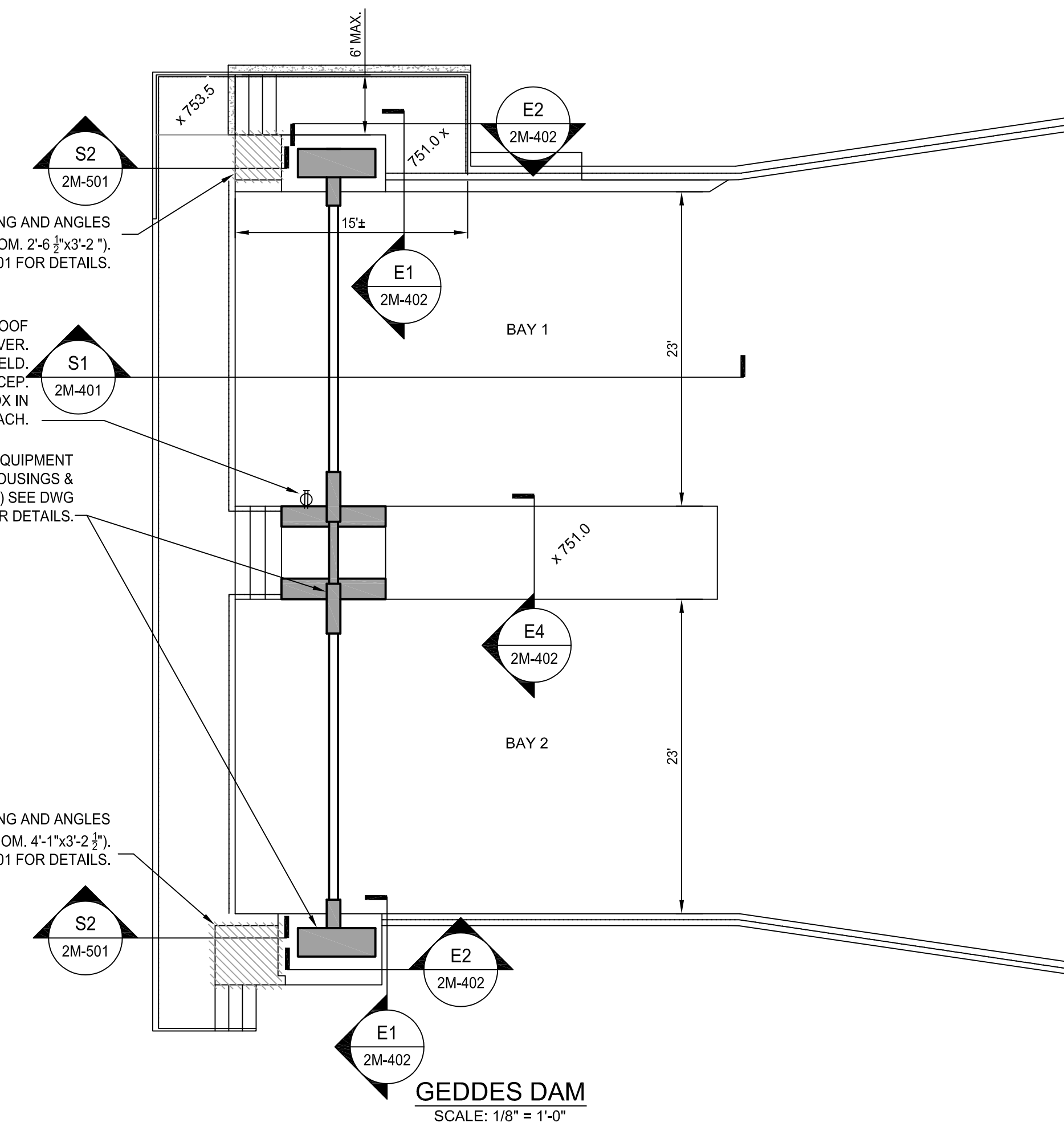


**SECTION S1**  
 SCALE: 1/8" = 1'-0"

REPLACE RECP. W/WEATHER-PROOF RECP. WITH CLOSEABLE HINGE COVER. 120/240V. VERIFY IN FIELD.  
 NEW RGS FROM T/CONC. TO RECP. W/COUPLER. REPULL WIRE TO J-BOX IN CONTROL HOUSE. (3)#10 @ 200LF EACH.

REPAINT LIFT EQUIPMENT INCLUDE GEAR HOUSINGS & BEARING BLOCK (TYP.) SEE DWG 2M-402 FOR DETAILS.

REPLACE STEEL GRATING AND ANGLES (NOM. 4'-1"x3'-2 1/2"). SEE DWG 2M-501 FOR DETAILS.



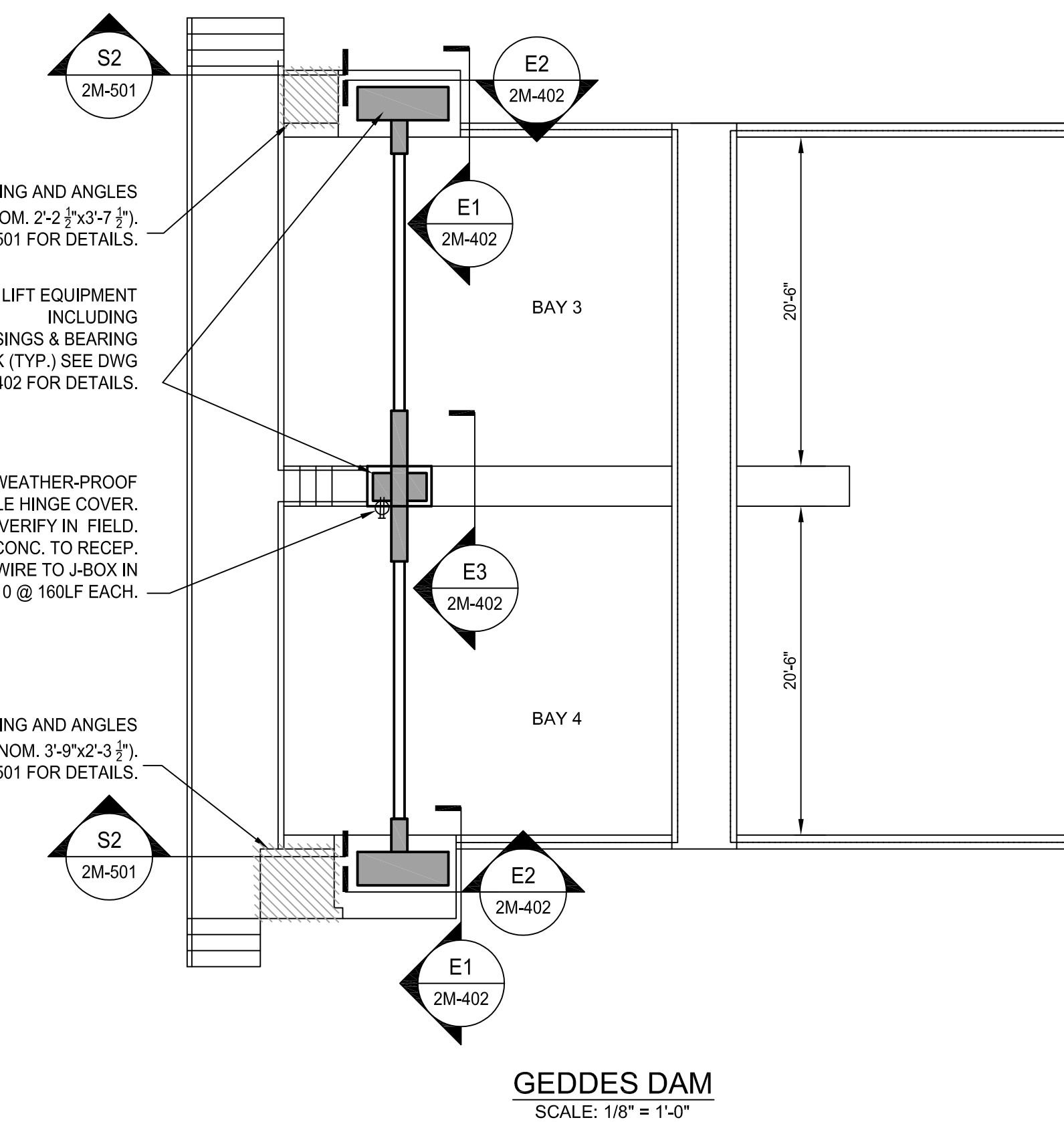
**GEDDES DAM**  
 SCALE: 1/8" = 1'-0"

REPLACE STEEL GRATING AND ANGLES (NOM. 2'-2 1/2"x3'-7 1/2"). SEE DWG 2M-501 FOR DETAILS.

REPAINT LIFT EQUIPMENT INCLUDING GEAR HOUSINGS & BEARING BLOCK (TYP.) SEE DWG 2M-402 FOR DETAILS.

REPLACE RECP. W/WEATHER-PROOF RECP. WITH CLOSEABLE HINGE COVER. 120/240V. VERIFY IN FIELD.  
 NEW RGS FROM T/CONC. TO RECP. W/COUPLER. REPULL WIRE TO J-BOX IN CONTROL HOUSE. (3)#10 @ 160LF EACH.

REPLACE STEEL GRATING AND ANGLES (NOM. 3'-9"x2'-3 1/2"). SEE DWG 2M-501 FOR DETAILS.



**GEDDES DAM**  
 SCALE: 1/8" = 1'-0"

Revision	By	Appd.	YY.MM.DD
BID SET	PJM	GRW	13.01.07
MDEO PERMIT SET	PJM	GRW	12.12.21
95% CLIENT REVIEW	PJM	GRW	12.12.14
MDEO PERMIT	PJM	GRW	12.12.04
60% CLIENT REVIEW	PJM	GRW	12.11.08
Issued	By	Appd.	YY.MM.DD

File Name:	BWA	PJM	PJM	12.10.11
116502-2M-401.DWG	Dwn.	Chkd.	Dsgn.	YY.MM.DD

Permit-Seal

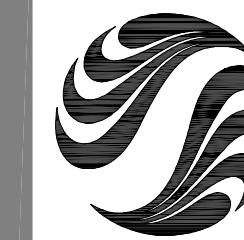
Client/Project  
 CITY OF ANN ARBOR

ARGO DAM & GEDDES DAM  
 COATING AND MISCELLANEOUS REPAIRS  
 Ann Arbor, Michigan

Title  
 GEDDES DAM SPILLWAY  
 REPAIRS PLAN I

Project No.	Scale	
2075116502	AS NOTED	
Drawing No.	Sheet	Revision

2M-401 10 of 12 0



Stantec Consulting Michigan Inc.  
3754 Ranchero Drive  
Ann Arbor MI U.S.A.  
48108-2771  
Tel. 734.761.1010  
Fax. 734.761.1200  
www.stantec.com

Copyright Reserved

The Contractor shall verify and be responsible for all dimensions. DO NOT scale the drawing - any errors or omissions shall be reported to Stantec without delay.  
The Copyrights to all designs and drawings are the property of Stantec. Reproduction or use for any purpose other than that authorized by Stantec is forbidden.

Consultants

Legend

- ITEMS TO BE PAINTED UNDER BASE BID
- DEMOLISH / REPAIR

Notes

1. EQUIPMENT IS SHOWN WITH APPROXIMATE GEOMETRY AND DIMENSION ONLY.
2. ALL REFURBISHED EQUIPMENT SHALL RECEIVE NEW 304 S.S. BOLTS, TO MATCH EXISTING SIZE AND SPACING.
3. NEW GASKETS SHALL BE 1/16" EPDM.

Revision	By	Appd.	YY.MM.DD
BID SET	PJM	GRW	13.01.07
MDOE PERMIT SET	PJM	GRW	12.12.21
95% CLIENT REVIEW	PJM	GRW	12.12.14
MDOE PERMIT	PJM	GRW	12.12.04
60% CLIENT REVIEW	PJM	GRW	12.11.08
Issued	By	Appd.	YY.MM.DD

File Name:	116502-2M-402.DWG	BWAFDA	PJM	PJM	12.10.11
Permit-Seal		Dwn.	Chkd.	Dsgn.	YY.MM.DD

Client/Project

CITY OF ANN ARBOR

ARGO DAM & GEDDES DAM  
COATING AND MISCELLANEOUS REPAIRS  
Ann Arbor, Michigan

Title

GEDDES DAM SPILLWAY  
REPAIRS PLAN II

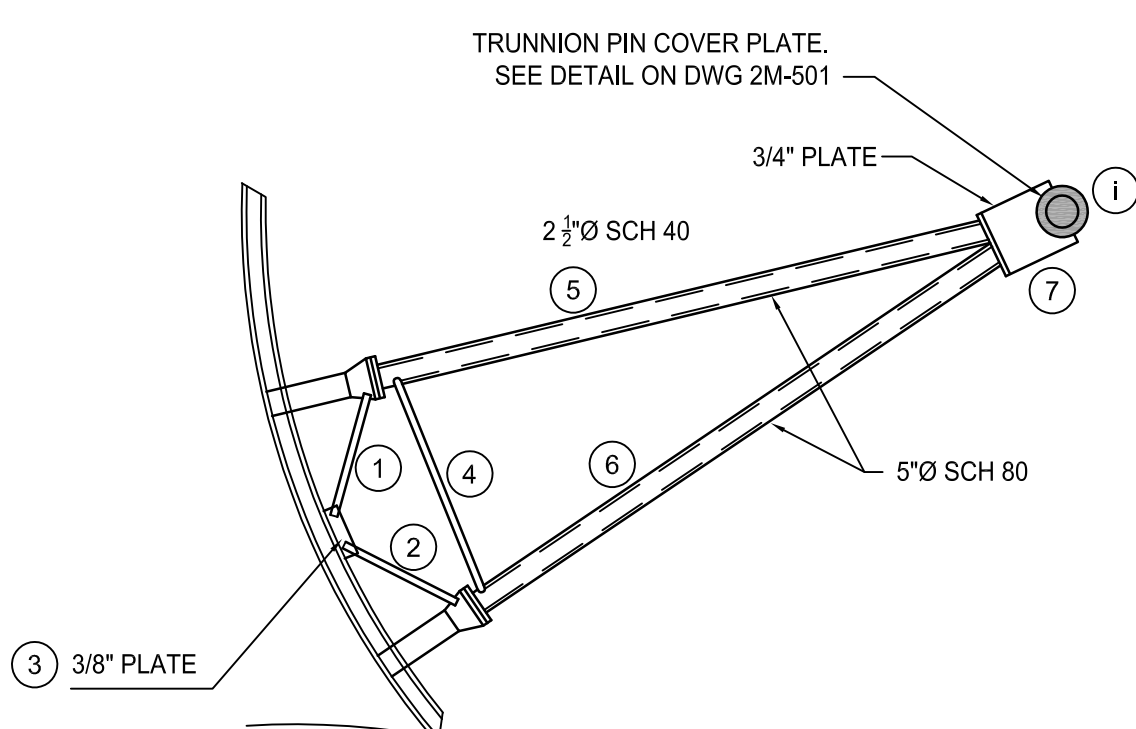
Project No.	Scale	
2075116502	AS NOTED	
Drawing No.	Sheet	Revision

2M-402 11 of 12 0

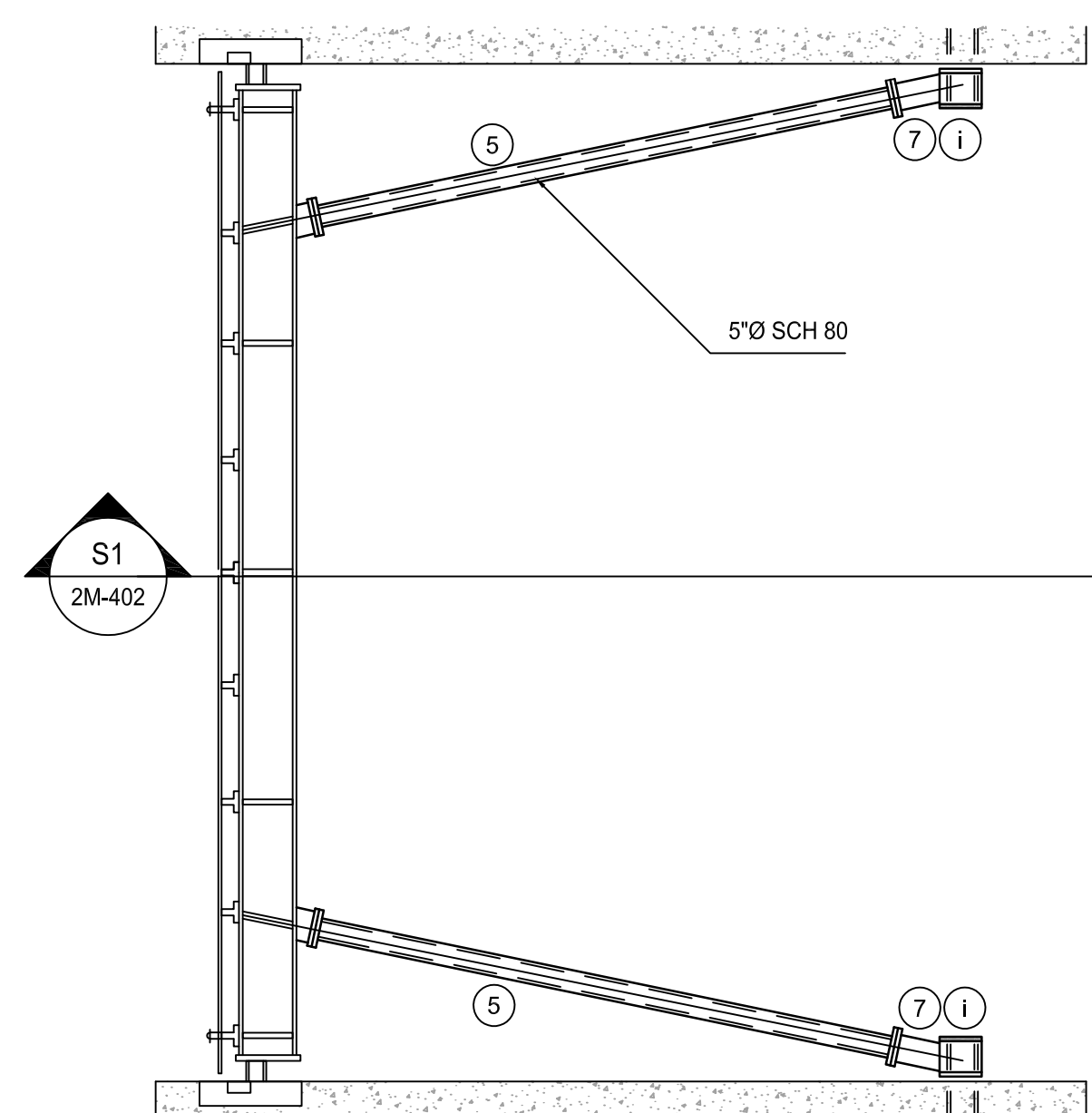
### REPAIRS SCHEDULE - BID ALTERNATE

BAY	COMPONENT REPAIR / REPLACEMENT
#1L	1 2 3 4 5 6
#1R	1 2 3 4 5 6 7
#2L	1 2 3 4 5 6 7
#2R	1 2 5 6
#3L	NONE
#3R	1 2 5 6 7
#4L	1 4
#4R	NONE

NOTE: REPAIRS INCLUDE ALL DEMOLITION, TEMPORARY SUPPORT, WELDING, BOLTING, PAINTING AND RELATED WORK.

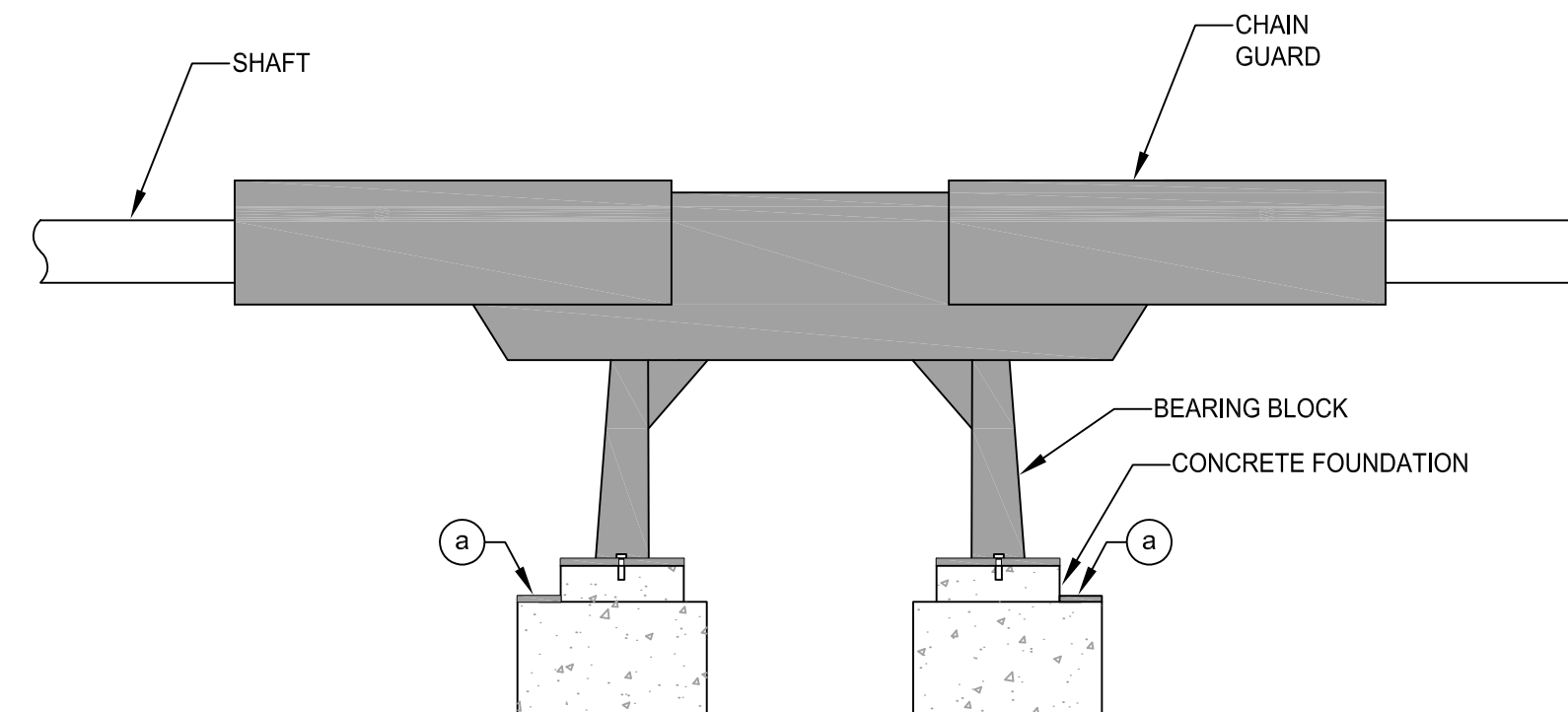


SECTION S1

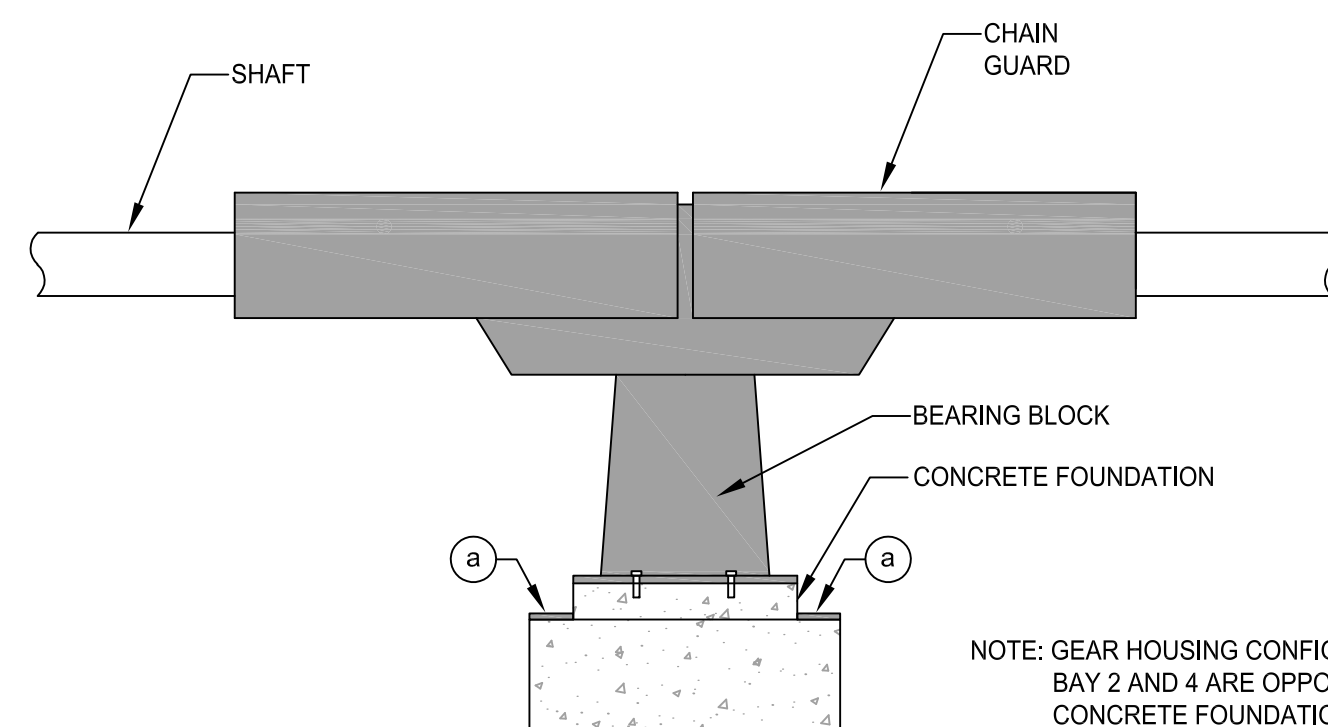


TYPICAL TAITNER GATE PLAN

SCALE: NONE



E4  
2M-401



E3  
2M-401

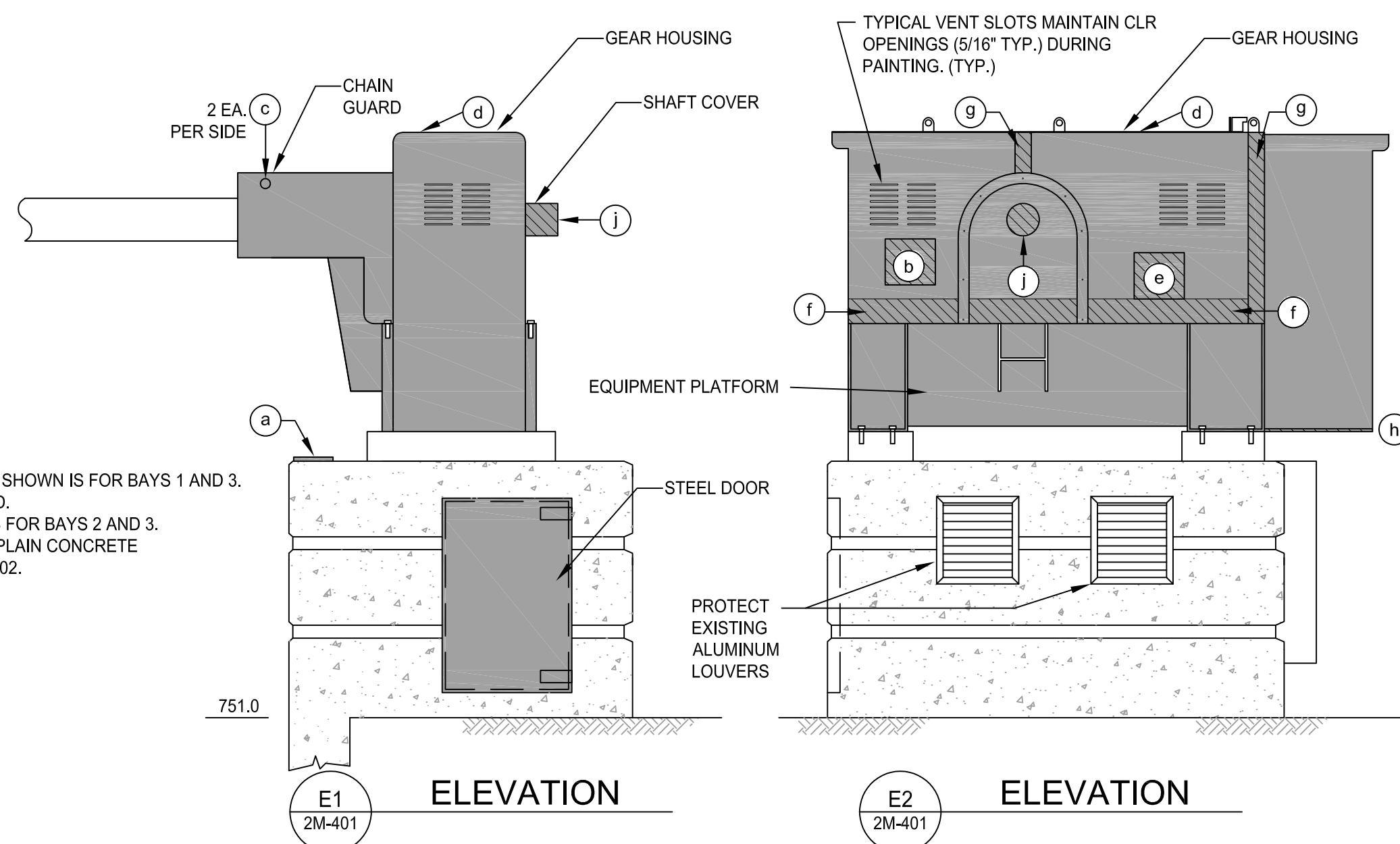
NOTE: GEAR HOUSING CONFIGURATION SHOWN IS FOR BAYS 1 AND 3. BAY 2 AND 4 ARE OPPOSITE HAND. CONCRETE FOUNDATION TYPE IS FOR BAYS 2 AND 3. BAY 1 AND 4 FOUNDATIONS ARE PLAIN CONCRETE AS SHOWN ON ELEVATION B 2C-102.

### REPAIR SCHEDULE - BASE BID

GEAR HOUSING 1	GEAR HOUSING 2	GEAR HOUSING 3	GEAR HOUSING 4	GATE 2	GATE 3
a	a	a	a	i R	i L, R
b 2 S.F.	c 2 EA.	c 2 EA.	c 2 EA.		(2 TOTAL)
c 2 EA.	d	d	d		
d	e	e	e		
e	f 14 L.F.	f 15 L.F.	f 6 L.F.		
f 14 L.F.	g 6 L.F.	g 4 L.F.	g 5 L.F.		
g 10 L.F.	h	h	h		
h	i	i	i		
i					

### KEY NOTES:

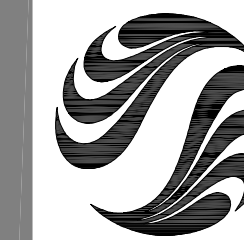
- a) INSTALL NEW 1/16" EPDM GASKETS ON ALL SIDE SEAL HEATER COVER PLATES AND PAINT COVER PLATES (2 EACH PER BAY).
- b) REPLACE CORRODED STEEL PLATE. SEE DETAIL ON DWG. 2M-501 (QUANTITY INDICATED IN SCHEDULE).
- c) PROVIDE NEW GREASE PORT. SEE DETAIL ON DWG. 2M-501 (1 EACH PER CHAIN GAURD).
- d) DEMOLISH EXISTING TOP ACCESS COVER AND FABRICATE NEW PER DETAIL ON DWG. 2M-501 (1 EACH PER HOUSING).
- e) DEMOLISH SIDE ACCESS COVER AND FABRICATE NEW PER DETAIL ON DWG. 2M-501 (1 EACH PER HOUSING).
- f) REPLACE CORRODED STEEL AND BOTTOM FLANGE. SEE DETAIL ON DWG. 2M-501 (QUANTITY INDICATED IN SCHEDULE).
- g) REPLACE CORRODED STEEL PANEL JOINT. SEE DETAIL ON DWG. 2M-501 (QUANTITY INDICATED IN SCHEDULE).
- h) INSTALL EXPANDED METAL CLOSURE. SEE DETAIL ON DWG. 2M-501.
- i) REPLACE TRUNNION PIN COVER PLATE. SEE DETAIL ON DWG. 2M-501.
- j) REPLACE SHAFT COVERS. SEE DETAIL ON DWG. 2M-501 (1 EACH PER HOUSING).



### LIFT EQUIPMENT

SCALE: 1/2" = 1'-0"

C:\3071\proj\071110002\dwg\116502-2M-402.dwg, 11/20/11 2:27:26 PM, bbaaf



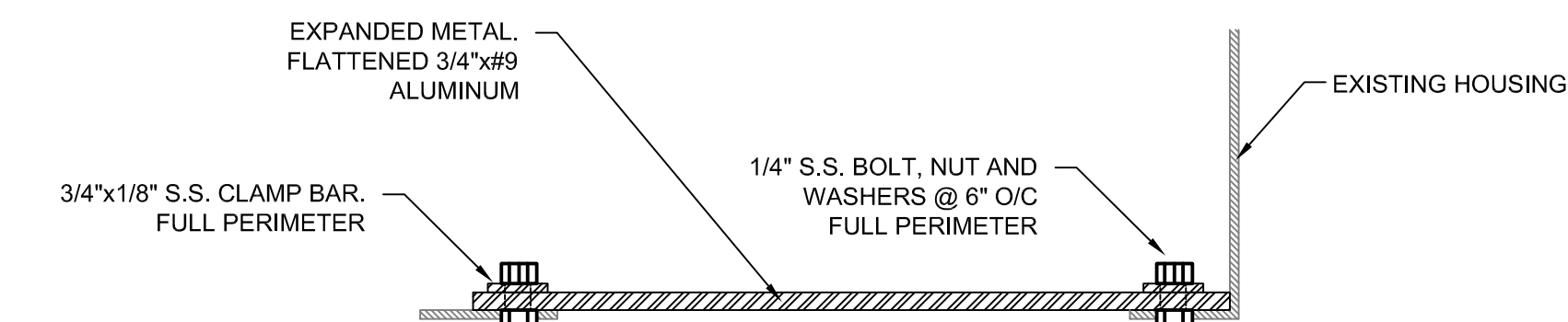
Copyright Reserved

The Contractor shall verify and be responsible for all dimensions. DO NOT scale the drawing - any errors or omissions shall be reported to Stantec without delay.  
 The Copyrights to all designs and drawings are the property of Stantec. Reproduction or use for any purpose other than that authorized by Stantec is forbidden.

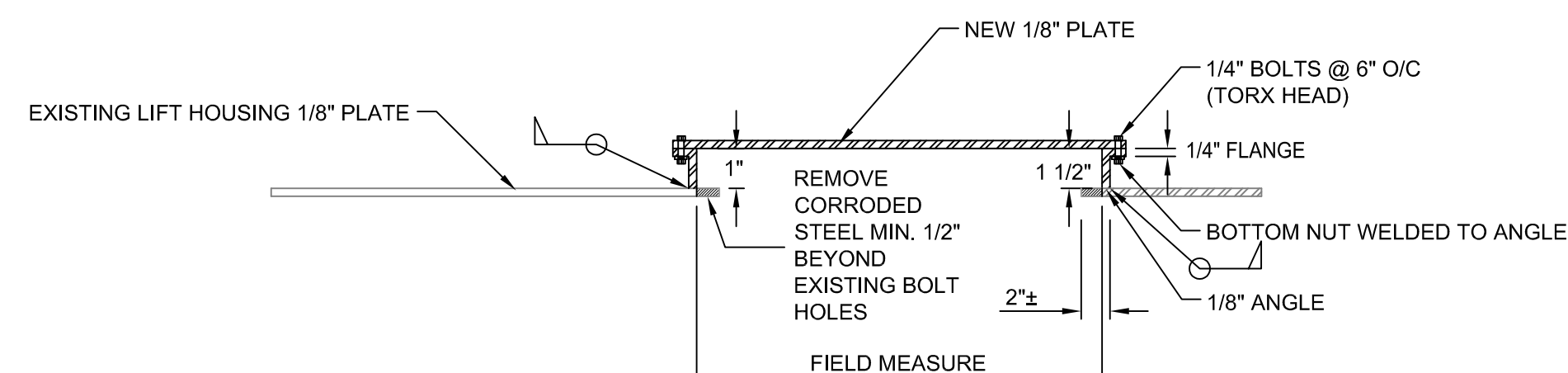
Consultants

Legend

Notes

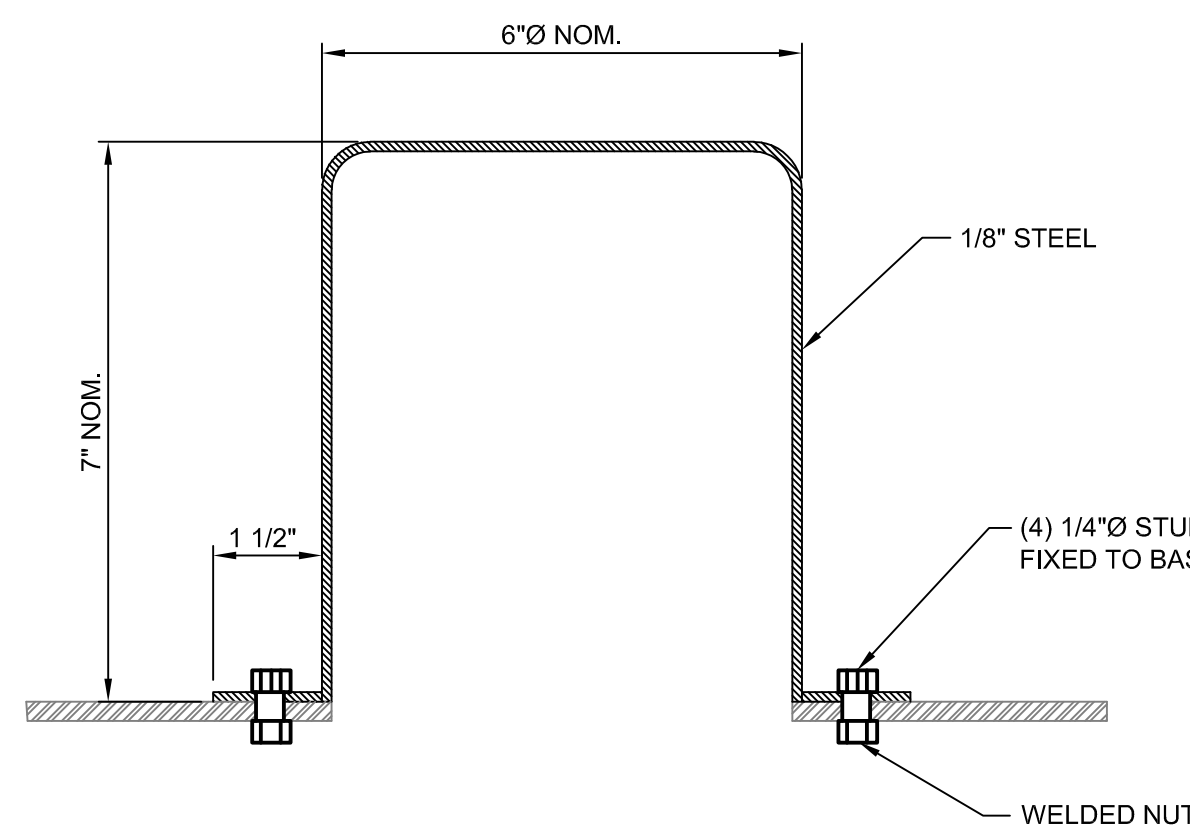


**h EXPANDED METAL CLOSURE**  
SCALE: NONE



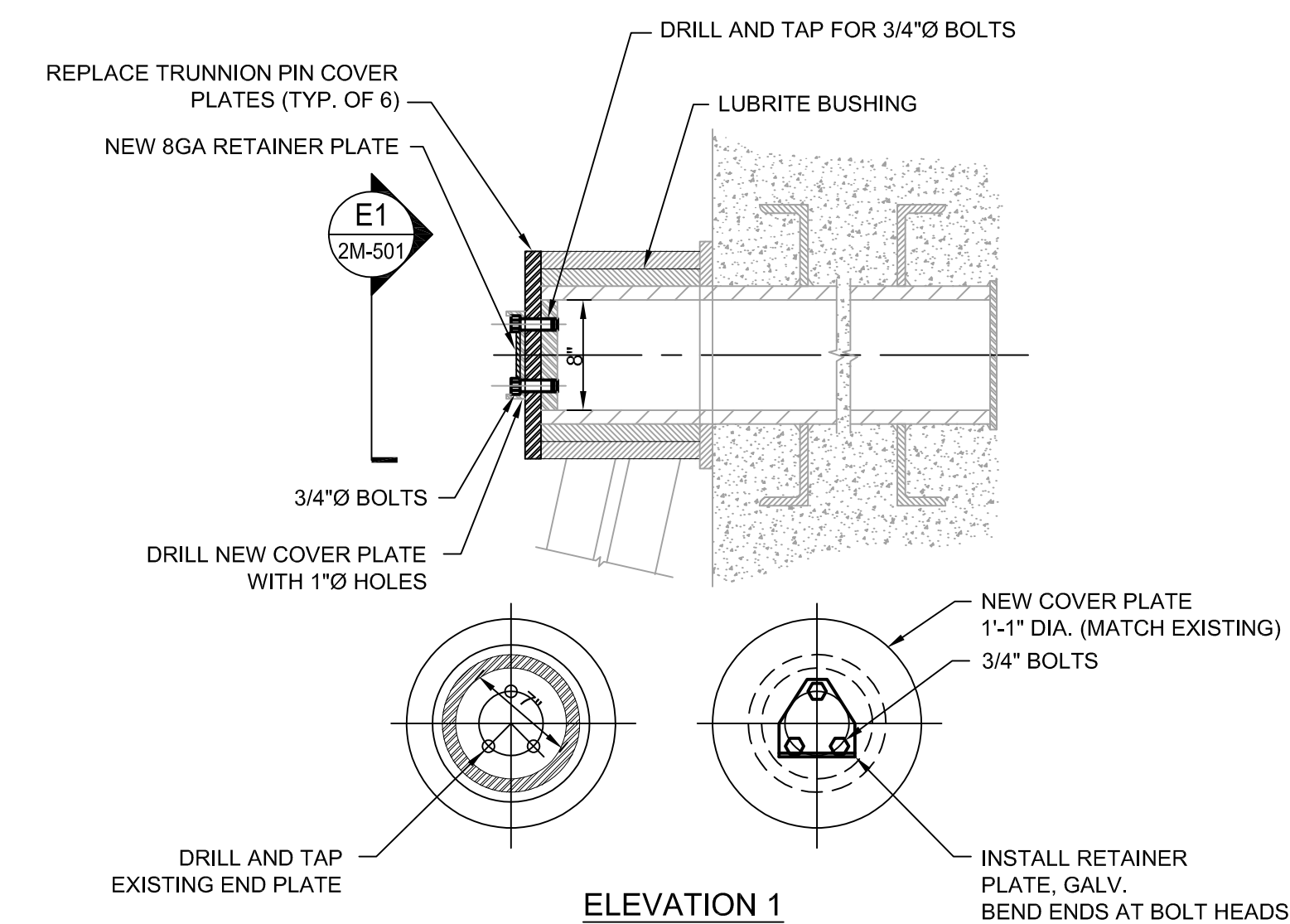
NOTE: INSTALL 1/16" EDPM GASKET BETWEEN COVER PLATE AND FLANGE.

**d GEAR HOUSING TOP COVER REPLACEMENT DETAIL**  
SCALE: NONE



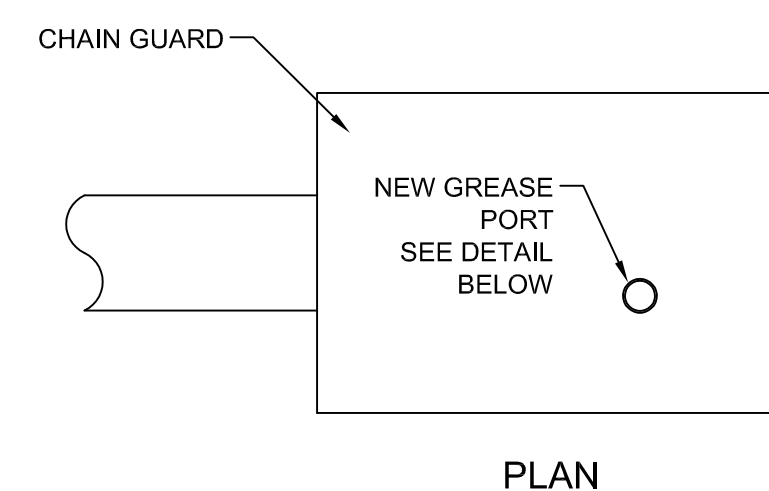
NOTE: INSTALL 1/16" EDPM GASKET BETWEEN COVER AND HOUSING.

**j NEW SHAFT COVER DETAIL**  
SCALE: NONE

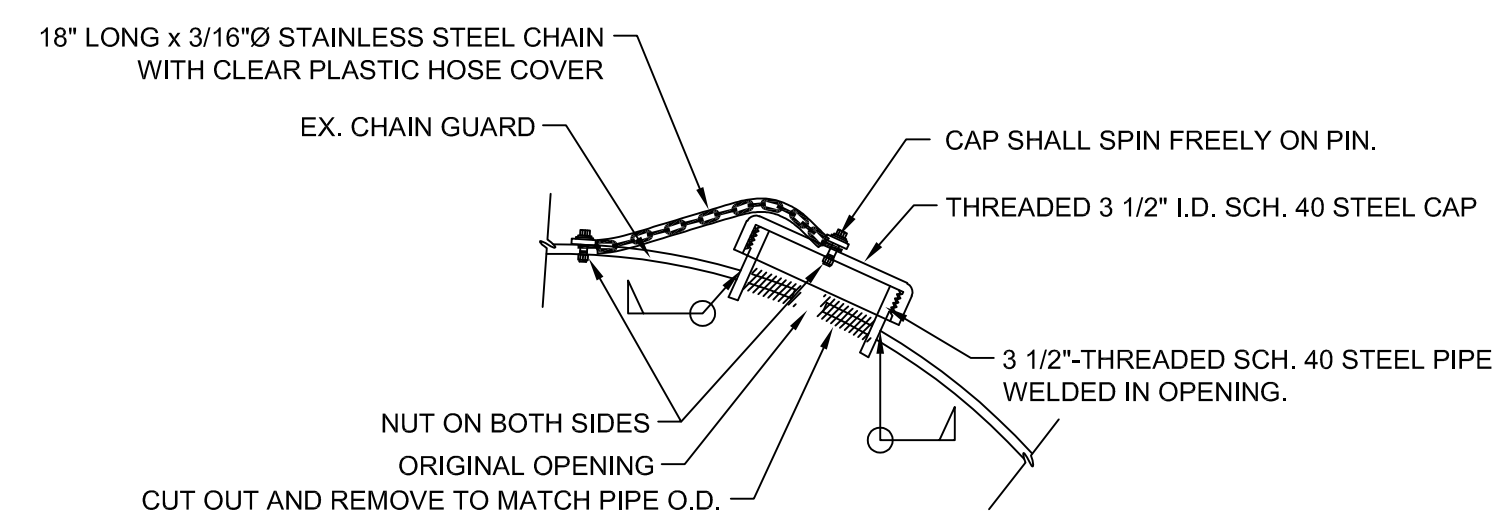


NOTES  
 1. MATCH EXISTING THICKNESS, DIAMETER AND HOLE PATTERN.  
 2. BOLTS SHALL BE GALVANIZED  
 3. PAINT PER SPECIFICATIONS.

**i TRUNNION PIN COVER PLATE DETAIL**  
SCALE: NONE

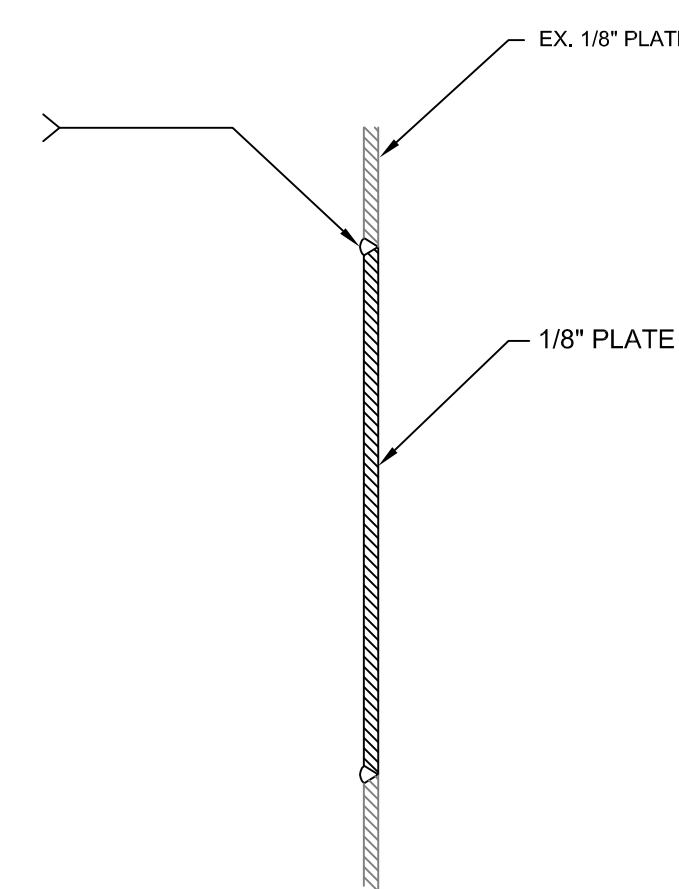


PLAN

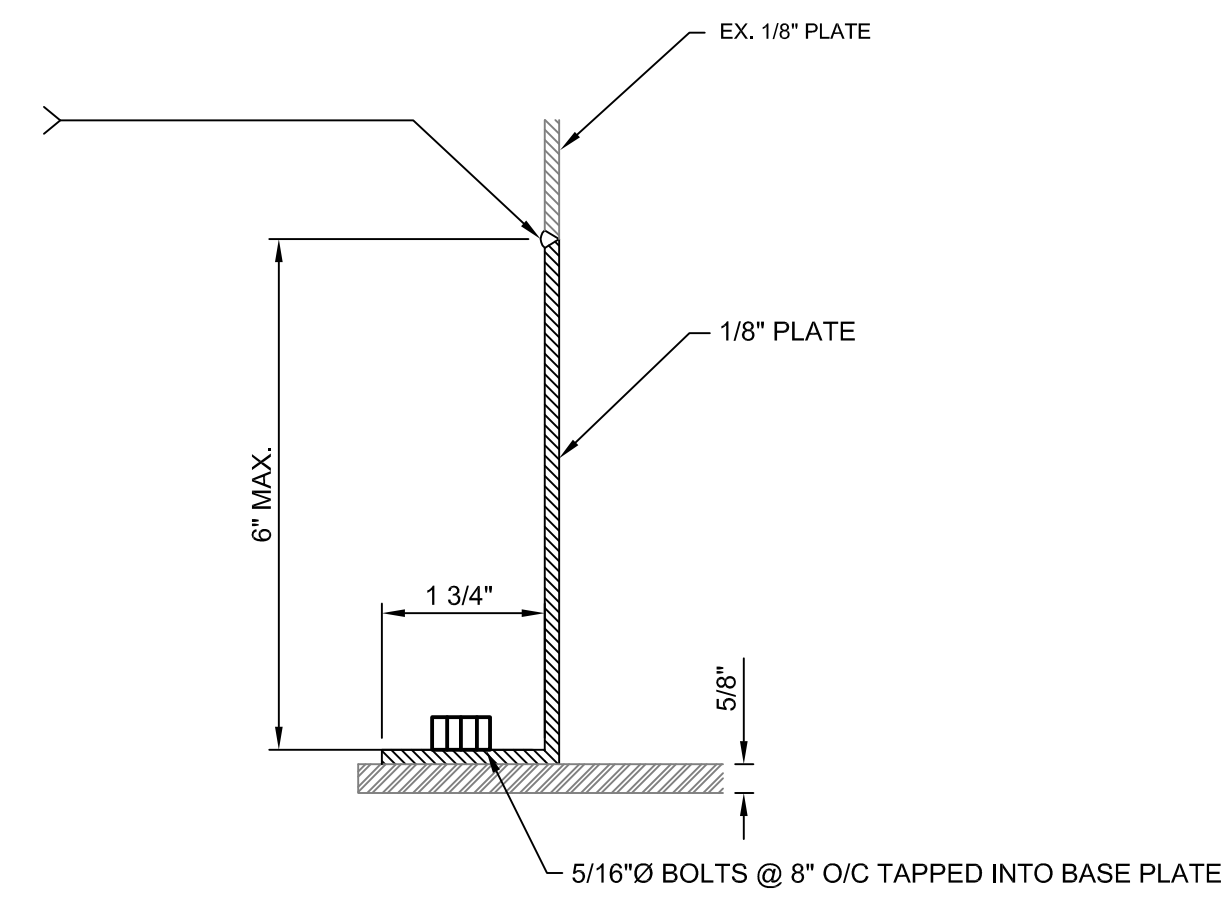


SECTION DETAIL

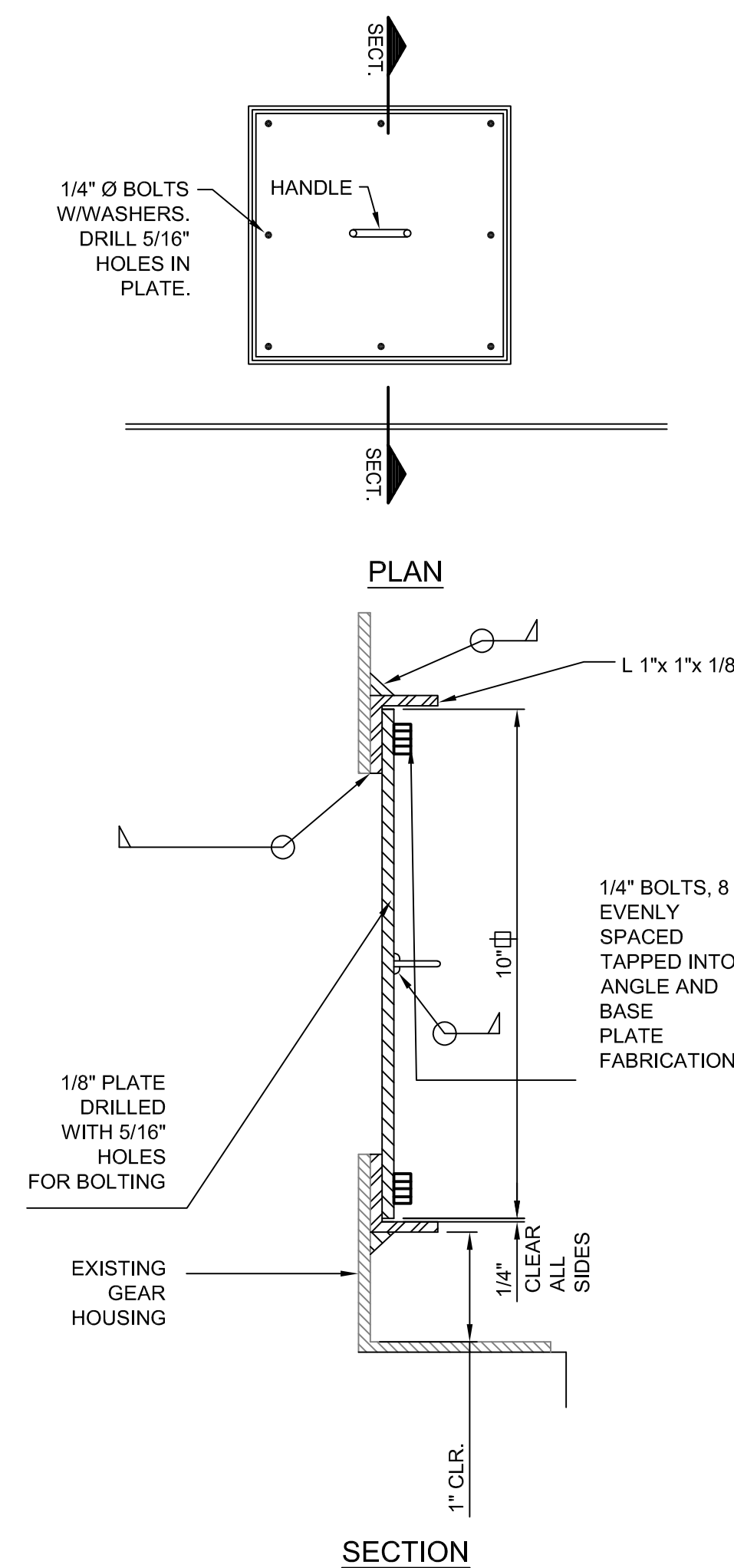
**c GREASE PORT DETAIL**  
SCALE: NONE



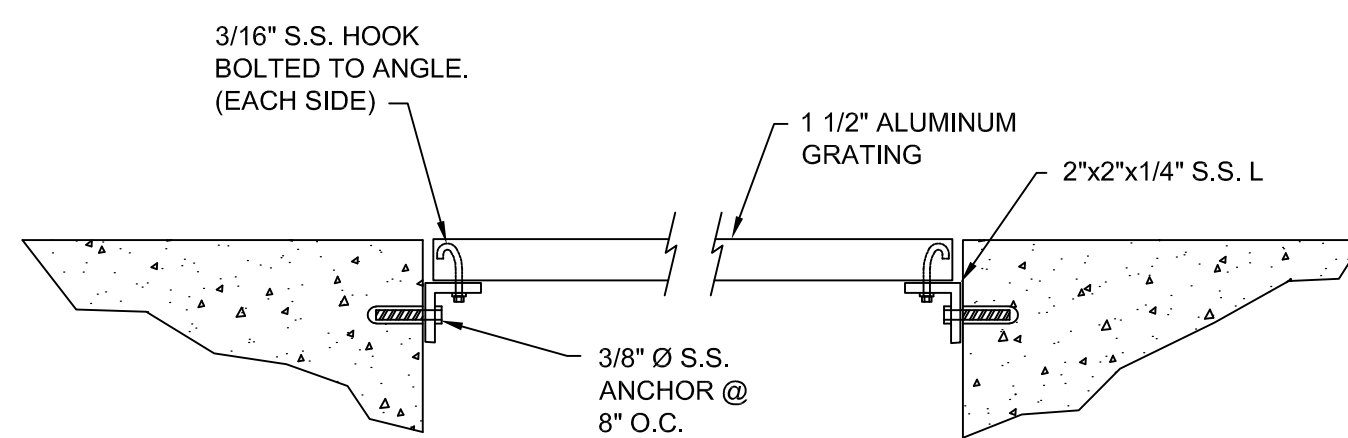
**b e PLATE REPLACEMENT DETAIL**  
SCALE: NONE



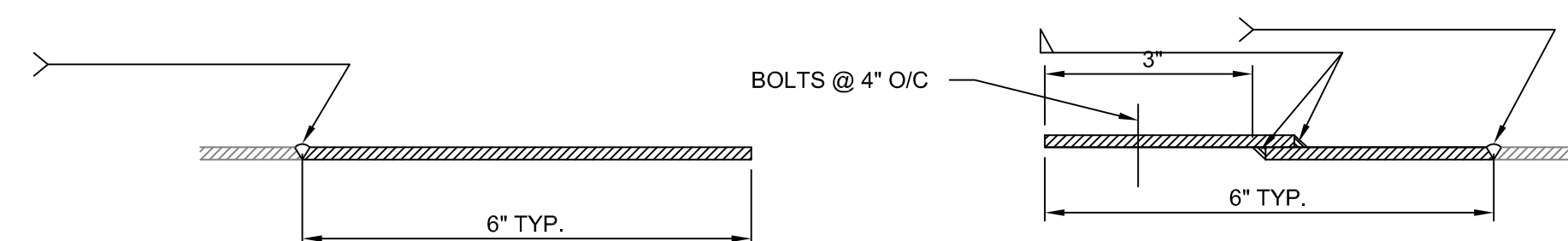
**f BOTTOM FLANGE REPAIR DETAIL**  
SCALE: NONE



**e COVER PLATE REPLACEMENT DETAIL**  
SCALE: NONE



**S2 GRATING DETAIL**  
SCALE: NONE



**g PANEL JOINT DETAIL**  
SCALE: NONE

**SHEET NOTES**

- ALL COMPONENTS SHALL BE OF A36 STRUCTURAL STEEL.
- DIMENSIONS SHOWN ARE TO IDENTIFY GENERAL SCOPE OF WORK, UNLESS OTHERWISE NOTED. THE CONTRACTOR SHALL FIELD MEASURE COMPONENTS & MATCH EXISTING.
- DE-BUR & SMOOTHEN ALL PIECES, BLUNT ALL CORNERS.
- WELDS SHALL CONFORM TO AWS D 1.1. APPLY MULTIPLE PASSES AS REQUIRED.
- INSTALL 1/16" EDPM GASKET BETWEEN COVER & HOUSING.

Revision	By	Appd.	YY.MM.DD
BID SET	PJM	GRW	13.01.07
MDOE PERMIT SET	PJM	GRW	12.12.21
95% CLIENT REVIEW	PJM	GRW	12.12.14
MDOE PERMIT	PJM	GRW	12.12.04
60% CLIENT REVIEW	PJM	GRW	12.11.08
Issued	By	Appd.	YY.MM.DD

File Name:	BWA	PJM	PJM	12.10.11
116502-2M-501.DWG	Dwn.	Chkd.	Dsgn.	YY.MM.DD

Client/Project  
 CITY OF ANN ARBOR

ARGO DAM & GEDDES DAM  
 COATING AND MISCELLANEOUS REPAIRS  
 Ann Arbor, Michigan

Title  
 GEDDES DAM REPAIRS  
 DETAILS

Project No.	Scale	
2075116502	AS NOTED	
Drawing No.	Sheet	Revision