



# **S. 7<sup>th</sup> Street (Scio Church to Delaware) Water Main, Stormwater, and Road Improvements**

**Engagement Session**

April 25, 2023

City of Ann Arbor – Public Services Area – Engineering

[www.a2gov.org/seventhgreenview](http://www.a2gov.org/seventhgreenview)



## Meeting Norms

- Commit to learning and avoid speculation.
- Remember the importance of rights and the dignity of others.
  - Critique ideas, not people.
  - Use thoughtful language to create a comfortable forum for everyone.
  - Inappropriate language will result in removal from the meeting.



## Project Staff – City of Ann Arbor



City of Ann Arbor – Engineering

**Tracy Anderson, P.E.**

Project Manager

[TAnderson@a2gov.org](mailto:TAnderson@a2gov.org)

(734) 794-6410 ext. 43639

City of Ann Arbor – Engineering

**Cyrus Naheedy, P.E.**

Transportation Engineer

[CNaheedy@a2gov.org](mailto:CNaheedy@a2gov.org)

(734) 794-6410 ext. 43645

City of Ann Arbor – Systems Planning

**Michelle Bennett, AICP**

Community Engagement Specialist

[MBennett@a2gov.org](mailto:MBennett@a2gov.org)

(734) 794-6430 ext. 43704

City of Ann Arbor – Engineering

**Nick Hutchinson, P.E.**

City Engineer

[NHutchinson@a2gov.org](mailto:NHutchinson@a2gov.org)

(734) 794-6410 ext. 43633

# Agenda



**Project Overview**

**Problems and Potential Solutions**

**Group Exercise and Sharing**

**Questions**

**Next Steps**



# Engagement History

**Summer/Early Fall, 2022**

Online survey;  
informational session

**September 2022**

Staff and  
Transportation  
Commission  
recommendations

**November 2022**

Council Resolution

**Spring/Summer 2023**

New engagement  
series



# Construction Project Boundaries

- S. 7<sup>th</sup> Street – Scio Church Rd to Delaware Dr
- Greenview – S. 7<sup>th</sup> Street to Stadium Blvd





# Project Boundaries: S. 7<sup>th</sup> Street Reconfiguration

S. 7<sup>th</sup> Street  
reconfiguration: Scio  
Church Rd to Delaware Dr

- Residential road
- 0.3 miles





## Project Overview

- Replace aging water main
- Install stormwater management system
- Repave the street
- **Provide transportation safety improvements**
- Construction Spring/Summer 2024





## Road Reconfiguration: Council Resolution

Develop new designs for South Seventh between Scio Church and Delaware that **narrow the road** using speed management tools such as, but not limited to, chicanes, pinch points, and/or mini roundabouts to slow traffic to safe neighborhood speeds, and then integrate an **appropriate all ages and abilities bike route** for a neighborhood street.

**Additional public engagement shall be conducted** to present the new designs to the public for feedback, then the designs will go to the Transportation Commission, then to City Council if necessary.



# Road Reconfiguration

## Purpose

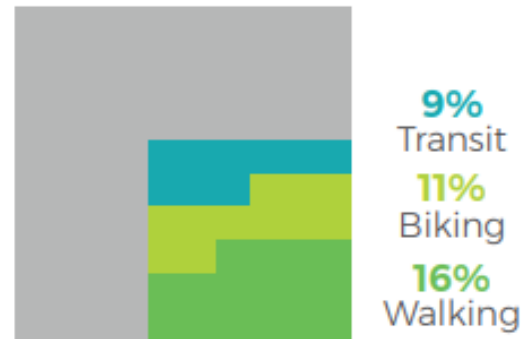
- Improve public safety for all users
- Make All Ages and Abilities Route

## Impacts

- Slow down vehicular speeds
- Improve comfort levels for nonmotorized users

**36%**

of all trips within the city made by walking, biking or transit (2019 Transportation Habits Survey)





# All Ages and Abilities Route: Examples



Residential



Downtown



## Perceived Problems – Public Comment

- 3-way intersection can be dangerous (cars drive through it)
- Speeding
- Lack of bicycle infrastructure (because of the school there are a lot of learning cyclists)
- Road is too wide
- Sidewalks are too narrow (don't accommodate bicyclists)
- U-turns on the street
- No road markings
- Annual maintenance



## Perceived Problems – Public Comment Con't

- Maintain residential parking (use our driveways for children to play)
- School pick up and drop off
- Maintain the traffic flow
- Football parking
- Lack of signage



# Potential Solutions

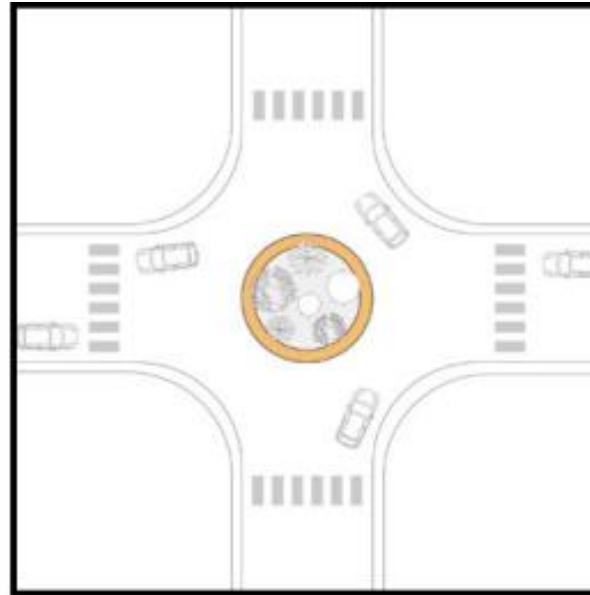
City of Ann Arbor – Public Services Area – Engineering

[www.a2gov.org/seventhgreenview](http://www.a2gov.org/seventhgreenview)



# Design Options: Mini Roundabouts

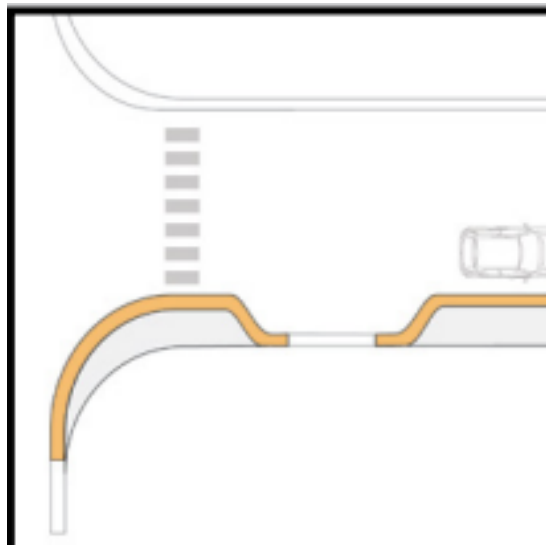
Purpose of Roundabout	Considerations
Helps to slow traffic	Located in intersections
Could include a landscaped center	





# Design Options: Curb Bump Outs

Purpose of Curb Bump Outs	Considerations
Narrows road – can be used as “pinch points”	Can remove some parking (location dependent)
Slows traffic	Additional maintenance for residents in the grassy area between the sidewalk and the road
Reduces turning speeds at intersections	
Stormwater capture (extra permeable surface)	

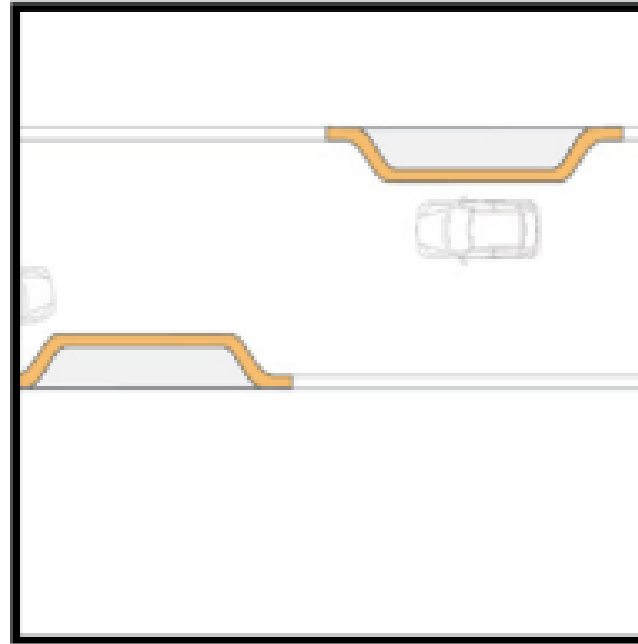






# Design Options: Chicanes

Purpose of Chicanes	Considerations
Slows traffic by added curvature to the road	Would reduce parking
Stormwater capture (extra permeable surface)	Additional maintenance for residents in the grassy area between the sidewalk and the road





# Design Options: Additional Crosswalks

Purpose of Additional Crosswalks	Considerations
Safe access for pedestrians	New crosswalks would reduce parking
Provides context cues to drivers to slow down	Need a ramp on both sides (not a driveway)
Combined with curb bump outs can increase pedestrian visibility	Cannot add stop signs with every crosswalk



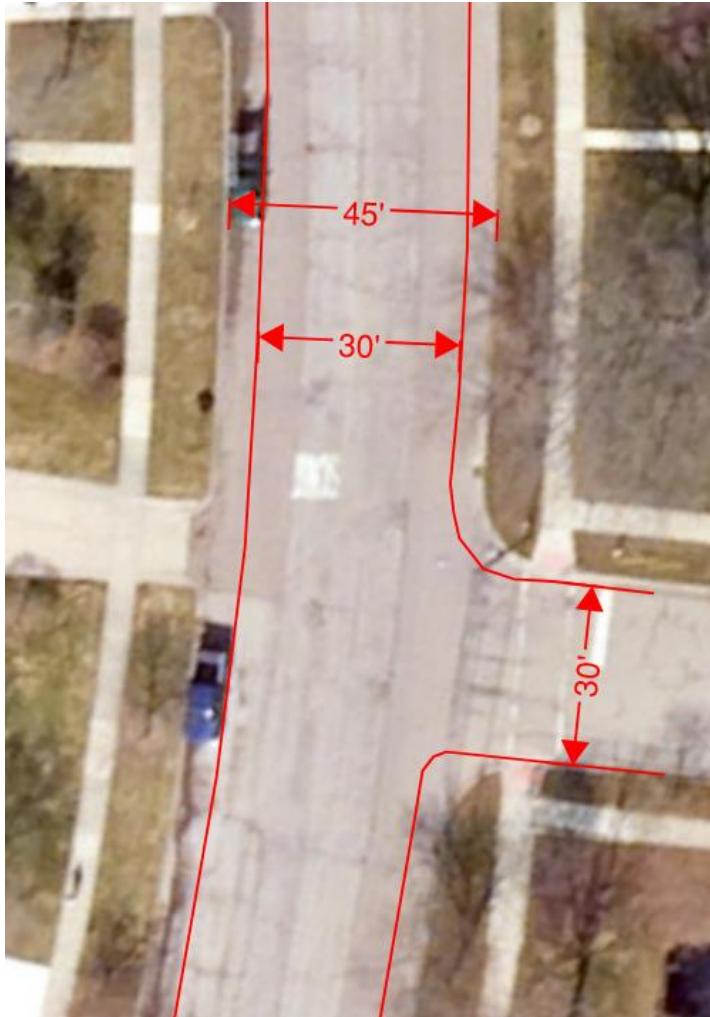
With Bump Outs



Without Bump Outs



## Design Options: Narrow Width of Road



Purpose of Narrow Road	Considerations
Helps to slow traffic by giving road a “residential” feel	Additional maintenance for residents in the grassy area between the sidewalk and the road
Less paving = less maintenance	Could move both curbs or one side
Road width would match surrounding roads	Parking is maintained
Stormwater capture (extra permeable surface)	



# Design Options: Widen West Sidewalk

Purpose of Widen West Sidewalk	Considerations
Bike would be separated from road (on same side as school)	West side of road would be narrowed to allow for a 10 ft wide sidewalk
Parking is maintained	Only west side is changed
Road width would match surrounding roads	Some trees on west side would be removed





# Group Exercise



# Budget Sheet

Potential Solutions	Relative Cost
Mini Roundabouts	\$3
Curb Bump Out	\$2 (per bump out)
Chicanes	\$3 (per side)
Additional Crosswalk	\$1
Narrow Width of Road (2 sides)	\$14
Narrow Width of Road (1 side)	\$7
Widen West Sidewalk	\$12
<b><i>Total Allotted per Group</i></b>	<b>\$20</b>



## Exercise Instructions

- With your group, draw on the map **where** (use the legend on the aerial) you would like to add the “potential solutions” on S. 7<sup>th</sup> Street
- You can use any combination of elements but cannot exceed \$20
- Groups must account for the considerations listed
- Use the sticky notes to describe your ideas, ask questions, or leave comments
- Elect a spokesperson to share results with the entire group



# Design Limitations

## Traffic Calming

- Includes elements to drive over, not around
- Separate, Council-approved program
- Based on resident petitions

## Stop Signs

- Must meet strict federal criteria to be installed

## Parking

- Parking in intersections and at crosswalks is illegal

## Crosswalk Lighting

- Crosswalk design will be determined by city guidelines





**Questions**



## Next Steps for Engagement

City to create design options considering today's input

Final design option shared with public this summer

In person meeting **June 27** to present and refine design options



## Contact Information

- Stay tuned at [A2gov.org/seventhgreenview](https://www.a2gov.org/seventhgreenview).
  - **Subscribe** to receive updates.
- Contact Tracy with any questions or comments  
[TAnderson@a2gov.org](mailto:TAnderson@a2gov.org)  
(734) 794-6410 ext. 43639



**Thank You!**

City of Ann Arbor – Public Services Area – Engineering

[www.a2gov.org/seventhgreenview](http://www.a2gov.org/seventhgreenview)