

# Intersection Improvement at Huron & Seventh



## Intersection Characteristics

- North leg and south leg are offset by approximately 50'
- Northbound and southbound left-turns interlock



## Intersection Characteristics

- Southbound approach on uphill slope
- The other three approaches are relatively level

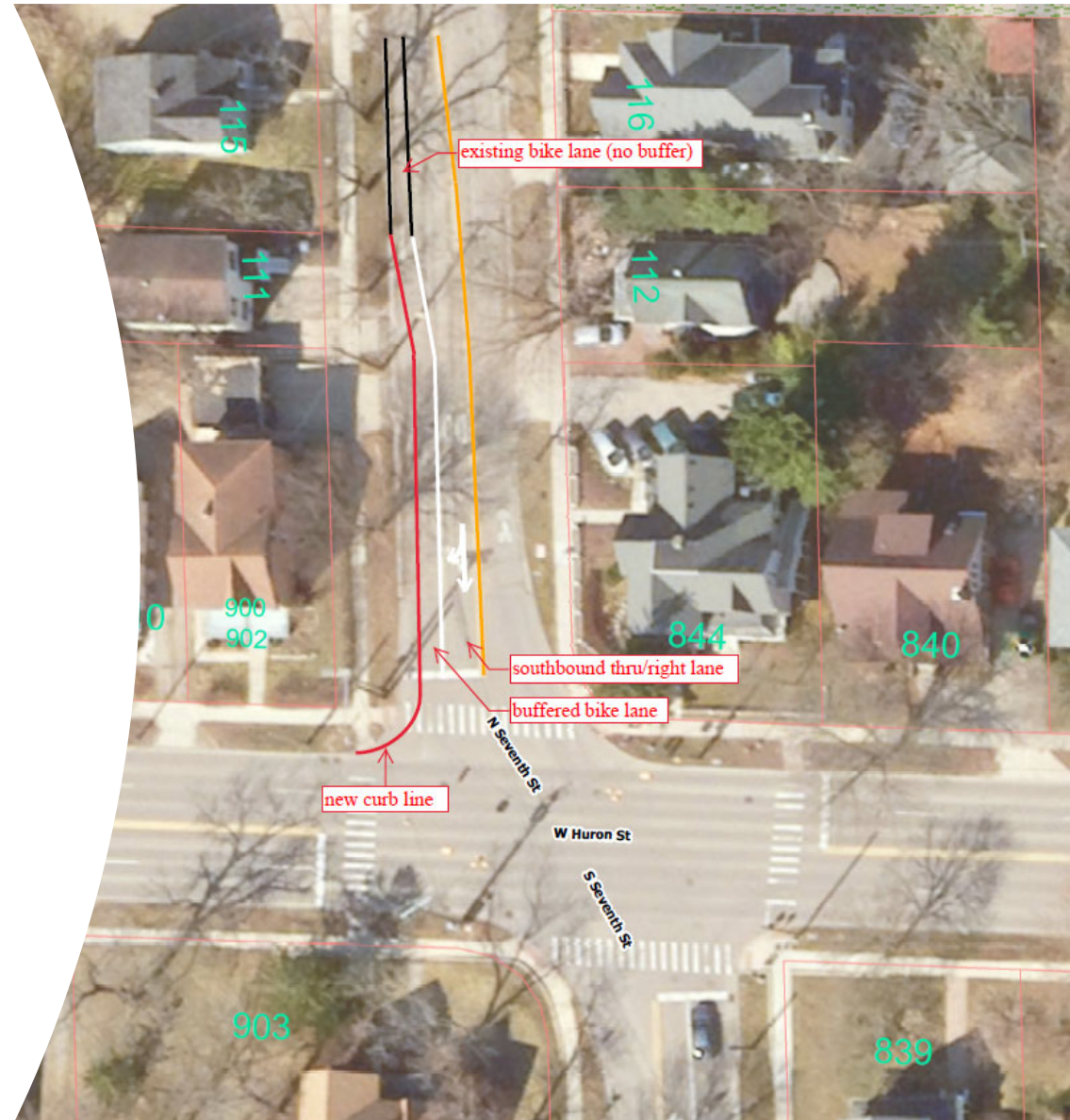


# 5-year Crash History

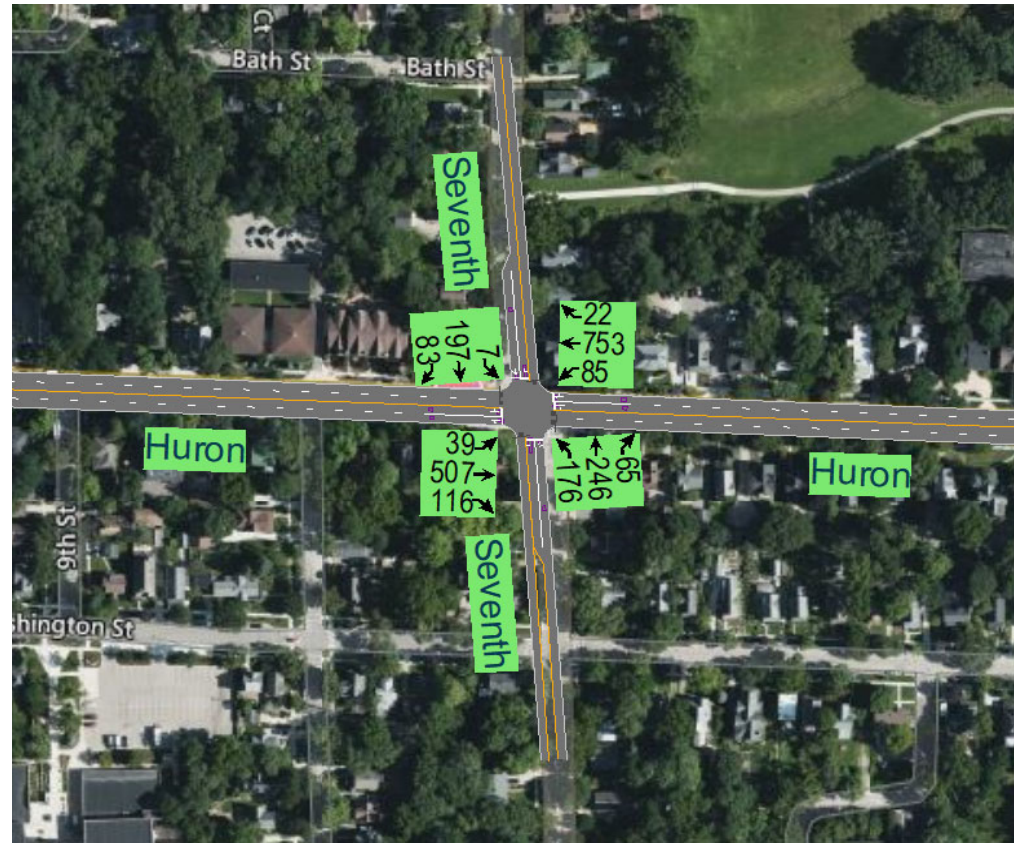
- 87 crashes
  - 18 head-on left turn crashes
    - Southbound left turn, 6
    - Northbound left turn, 5
    - Eastbound left turn, 3
    - Westbound left turn, 4
  - Non-motorized users
    - Pedestrian involved NBL vs. ped in west crosswalk
    - Pedestrian involved, WBL vs. ped in south crosswalk
    - Bicycle involved, NB vehicle blocked S crosswalk
    - Bicycle involved, WBL vs. bike in south crosswalk

# Mitigation Items

- Prohibit left-turn movement from southbound Seventh to eastbound Huron
- Cross section on southbound Seventh –
  - Shared thru/right turn lane
  - Buffered bike lane
- Flashing yellow arrow signal assembly for northbound left-turn
- Accessible pedestrian signals
- Other items considered, but will unlikely work
  - Roundabout
  - Add left-turn phases to both northbound and southbound Seventh



# Traffic Volumes (AM Peak, PM Peak)



**Thank you!**



**Phone:** 734.794.6410 ext. 43637



**Email:** Luke Liu, [yliu@a2gov.org](mailto:yliu@a2gov.org)



**Project Website:** [a2gov.org/huron-seventh](http://a2gov.org/huron-seventh)