

Session Name: 5-1-2019 8-29 PM

Date Created: 5/1/2019 7:01:02 PM

Active Participants: 4 of 4

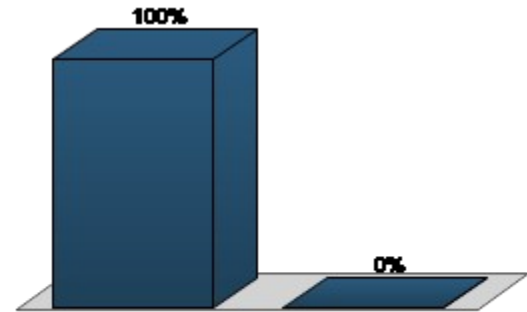
Average Score: 0.00%

Questions: 9

## Results by Question

### 1. Pioneer Basin Alternative - Do you support this alternative to resolve the stormwater issues? (Multiple Choice)

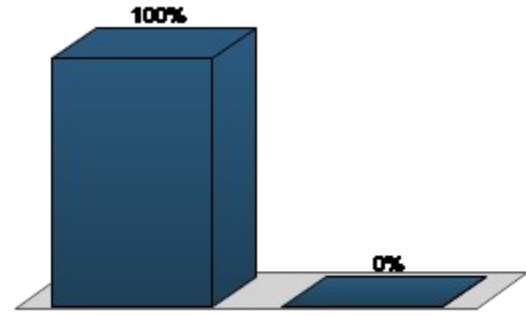
Responses		
	Percent	Count
Yes	100%	3
No	0%	0
<b>Totals</b>	<b>100%</b>	<b>3</b>



Question Statistics	
Mean	1.00
Median	1.00
Variance	0.00
Standard Deviation	0.00

**2. Pioneer Basin Alternative - Do you support this alternative to resolve the stormwater issues? (Multiple Choice)**

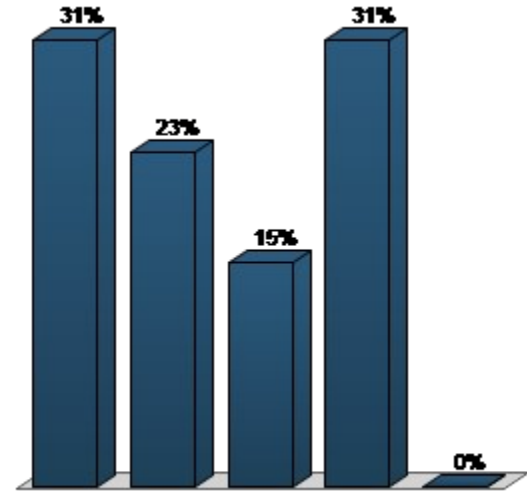
Responses		
	Percent	Count
Yes	100%	4
No	0%	0
<b>Totals</b>	<b>100%</b>	<b>4</b>



Question Statistics	
Mean	1.00
Median	1.00
Variance	0.00
Standard Deviation	0.00

**3. Pioneer Basin Alternative - Choose any of the following to explain why you believe this is a preferred alternative? (Select all that apply) (Multiple Choice - Multiple Response)**

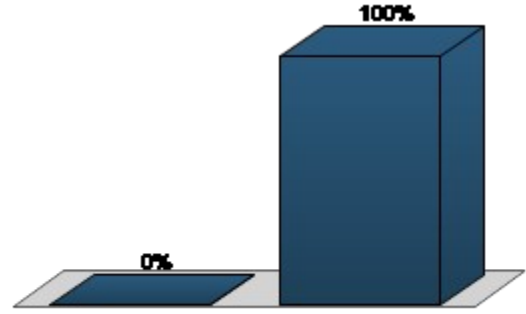
Responses		
	Percent	Count
Cost effectiveness	30.77%	4
Level of impact to area	23.08%	3
Time to resolution	15.38%	2
Amount of stormwater captured	30.77%	4
Other (please note on handout)	0%	0
<b>Totals</b>	<b>100%</b>	<b>13</b>



Question Statistics	
Mean	2.46
Median	2.00
Variance	1.48
Standard Deviation	1.22

**4. Snyder ROW Storage (Deeper BIRK) Alternative - Do you support this alternative to resolve the stormwater issues? (Multiple Choice)**

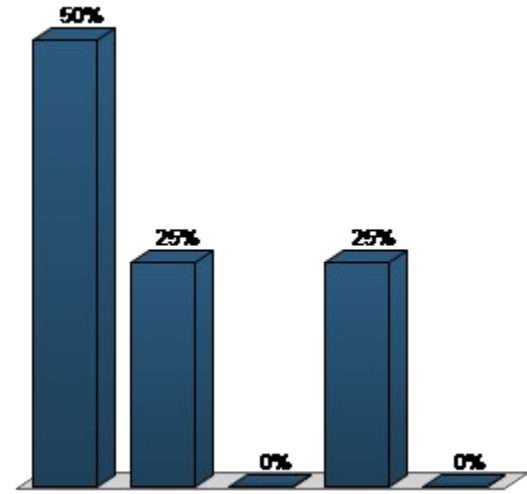
Responses		
	Percent	Count
Yes	0%	0
No	100%	4
<b>Totals</b>	<b>100%</b>	<b>4</b>



Question Statistics	
Mean	2.00
Median	2.00
Variance	0.00
Standard Deviation	0.00

**5. Snyder ROW Storage (Deeper BIRK) Alternative – Choose any of the following to explain why you believe this is a preferred alternative (Select all that apply) (Multiple Choice - Multiple Response)**

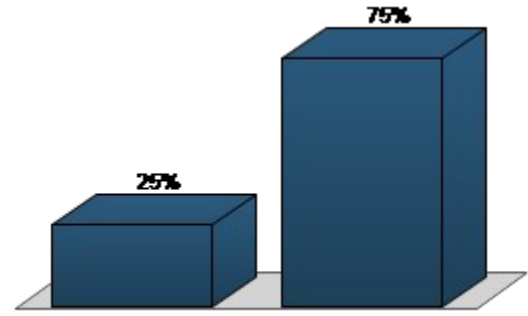
	Responses	
	Percent	Count
Cost effectiveness	50%	2
Level of impact to area	25%	1
Time to resolution	0%	0
Amount of stormwater captured	25%	1
Other (please note on handout)	0%	0
<b>Totals</b>	<b>100%</b>	<b>4</b>



Question Statistics	
Mean	2.00
Median	1.50
Variance	1.50
Standard Deviation	1.22

**6. Snyder ROW Storage (Deeper EDGEWOOD) Alternative – Do you support this alternative to resolve the stormwater issues? (Multiple Choice)**

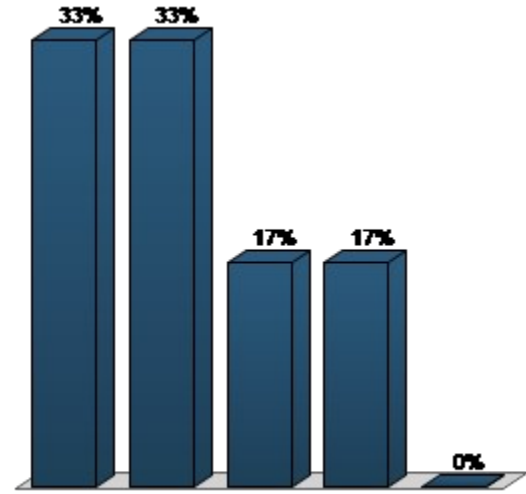
<b>Responses</b>		
	<b>Percent</b>	<b>Count</b>
Yes	25%	1
No	75%	3
<b>Totals</b>	<b>100%</b>	<b>4</b>



<b>Question Statistics</b>	
Mean	1.75
Median	2.00
Variance	0.19
Standard Deviation	0.43

**7. Snyder ROW Storage (Deeper EDGEWOOD) Alternative – Choose any of the following to explain why you believe this is a preferred alternative? (Select all that apply) (Multiple Choice - Multiple Response)**

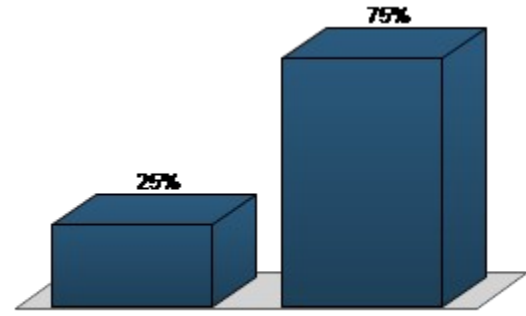
	Responses	
	Percent	Count
Cost effectiveness	33.33%	2
Level of impact to area	33.33%	2
Time to resolution	16.67%	1
Amount of stormwater captured	16.67%	1
Other (please note on handout)	0%	0
<b>Totals</b>	<b>100%</b>	<b>6</b>



Question Statistics	
Mean	2.17
Median	2.00
Variance	1.14
Standard Deviation	1.07

**8. Snyder + Stadium Storage Alternative – Do you support this alternative to resolve the stormwater issues?  
(Multiple Choice)**

<b>Responses</b>		
	<b>Percent</b>	<b>Count</b>
Yes	25%	1
No	75%	3
<b>Totals</b>	<b>100%</b>	<b>4</b>

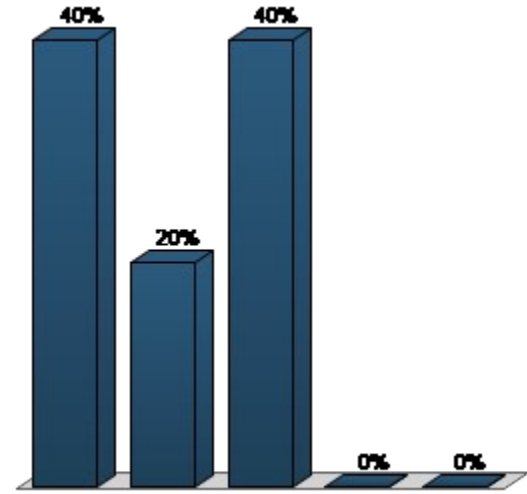


<b>Question Statistics</b>	
Mean	1.75
Median	2.00
Variance	0.19
Standard Deviation	0.43



**9. Snyder + Stadium Storage Alternative – Choose any of the following to explain why you believe this is a preferred alternative? (Select all that apply) (Multiple Choice - Multiple Response)**

	Responses	
	Percent	Count
Cost effectiveness	40%	2
Level of impact to area	20%	1
Time to resolution	40%	2
Amount of stormwater captured	0%	0
Other (please note on handout)	0%	0
<b>Totals</b>	<b>100%</b>	<b>5</b>



Question Statistics	
Mean	2.00
Median	2.00
Variance	0.80
Standard Deviation	0.89