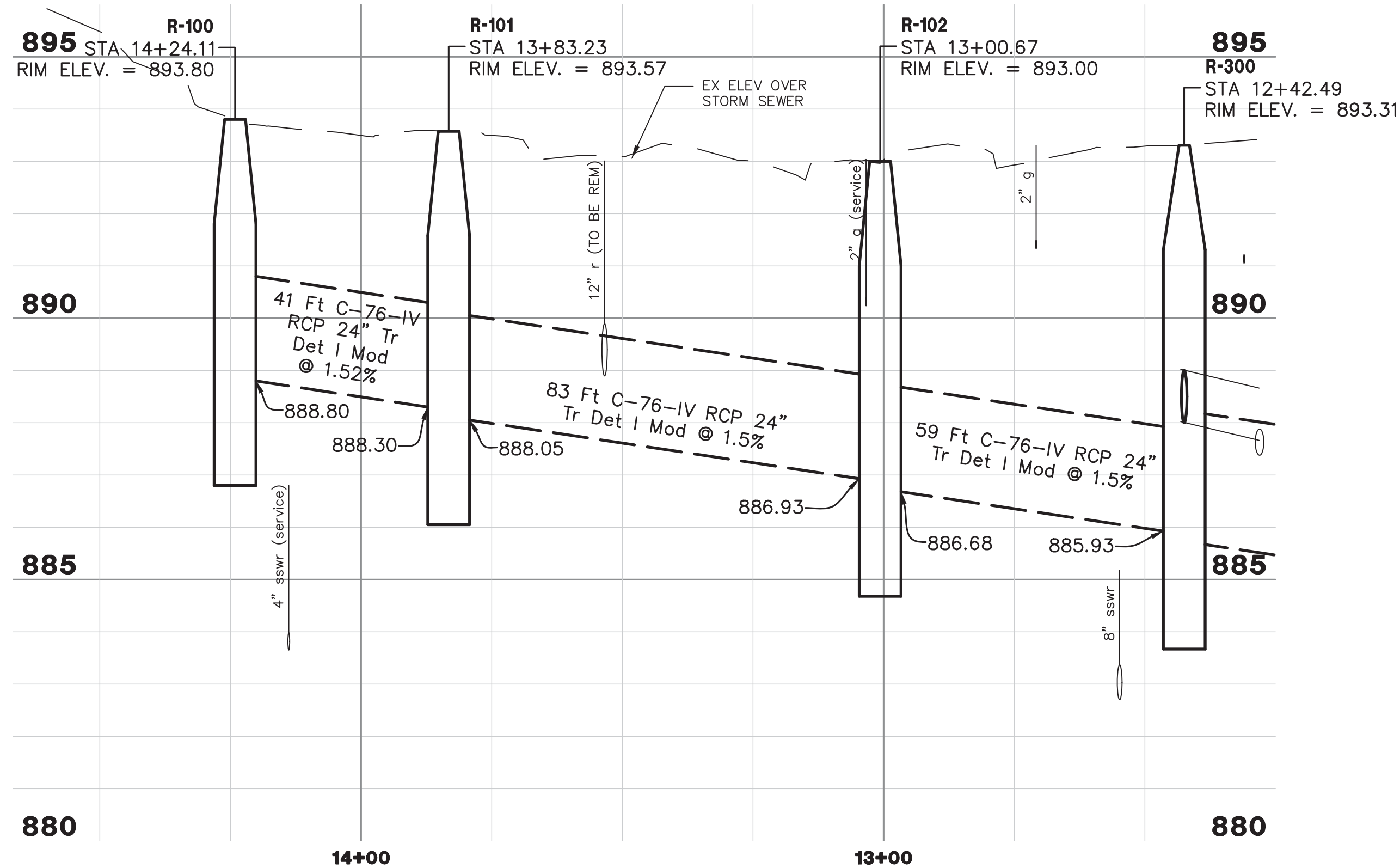
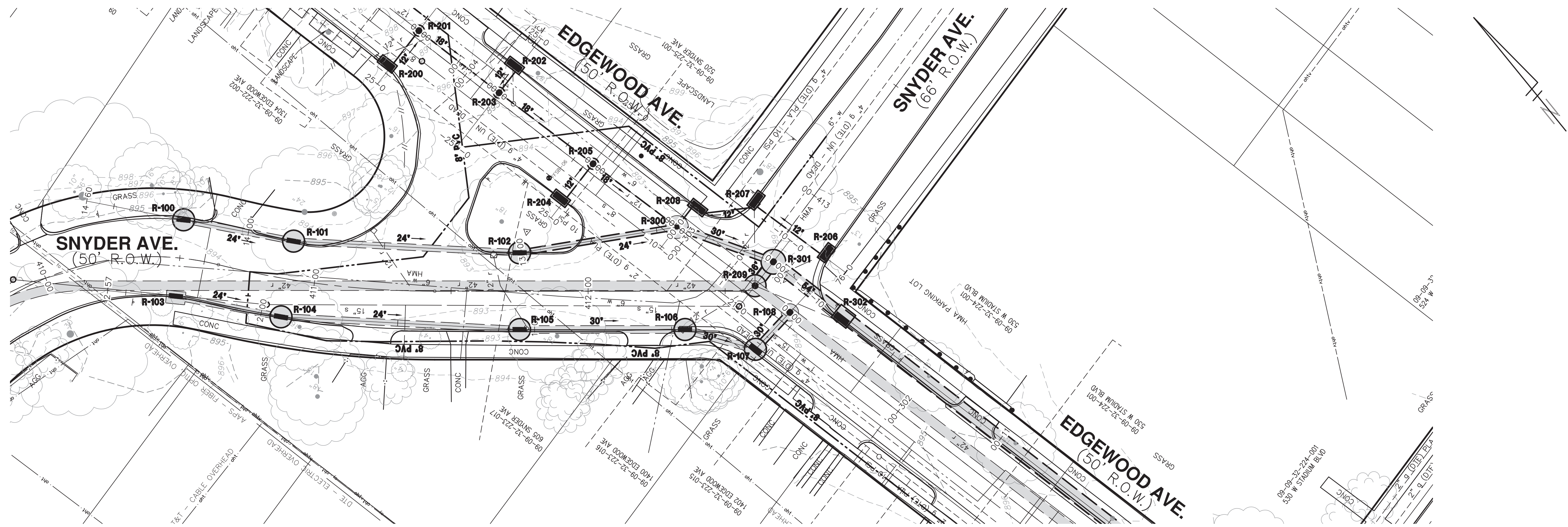


Z:\NCL\Canton\18255020(AA-Snyder)\Design\S-Snyder-UT.dwg Dwg Created: 4-Nov-19 - _a2 standard bw.stb - Plot Date: 5-Nov-19



STRUCTURE/ STATION, OFFSET	TOP OF CASTING ELEV.	INVERT ELEV. SIZE DIRECTION	DEPTH (FEET)	SIZE	APPLICATION/ CONSTRUCTION/ DETAIL
R-100/ 410+50.00, 14.00' LT	893.80 IPI	888.80 24" SW	7.00'	8' DIA.	H-V INLET, NEW, COVER K, (UD #X)
R-101/ 410+90.00, 14.00' LT	893.57 IPI	888.30 24" NW 888.05 24" SE	7.52'	8' DIA.	H-V INLET, NEW, COVER K, (UD #X)
R-102/ 411+75.00, 14.00' LT	893.00 IPI	886.93 24" NW 886.68 24" SE	8.32'	8' DIA.	H-V INLET, NEW, COVER K, (UD #X)
R-300/ 412+32.42, 23.42' RT 303+05.00, 3.73' RT	893.31 IPI	888.00 12" E 887.82 18" N 885.93 24" NW 885.67 30" SE	9.64'	8' DIA.	STORM MANHOLE, NEW, COVER B, (UD #X)
r-88-62438/ 412+35.42, 13.71' RT	893.19	891.85 4" SW 890.81 4" NW 889.96 12" E	3.23'	12" DIA.	EX INLET
r-88-62439/ 411+77.17, 12.49' RT	892.36	887.47 12" NE	4.89'	12" DIA.	EX INLET
r-88-62440/ 411+20.49, 20.15' LT	892.72	889.28 12" SW	3.44'	12" DIA.	EX INLET
r-88-62441/ 411+65.64, 12.42' LT	892.37	892.37 12" SW	3.16'	12" DIA.	EX INLET
r-92-51993/ 412+60.72, 2.23' RT	893.87	887.65 12" SE 887.23 12" NE 887.20 12" N 885.13 42" NW 885.07 42" S	8.80'	42" DIA.	EX STORM MANHOLE
SMH #501505/ 410+84.30, 10.51' LT	893.57	882.58 15" NW 882.56 15" SE	11.01'	15" DIA.	EX SANITARY MANHOLE
SMH #501506/ 409+89.36, 4.73' LT	895.04	882.87 15" W 882.85 15" SE	12.19'	15" DIA.	EX SANITARY MANHOLE
SMH #430818/ 412+55.09, 5.55' RT	893.81	882.86 6" W (not found) 882.15 8" N 881.69 15" NW 881.66 15" S	12.15'	15" DIA.	EX SANITARY MANHOLE

(e) = Existing Structure Rim Elevation IPI = Proposed Structure Rim Elevation (IAI) = Operator Access Rim Elev.



REV.	DESCRIPTION	DATE	DRAWN	AK	CHECKED
01	CONCEPTUAL SCHEMATIC	08/06/2019			

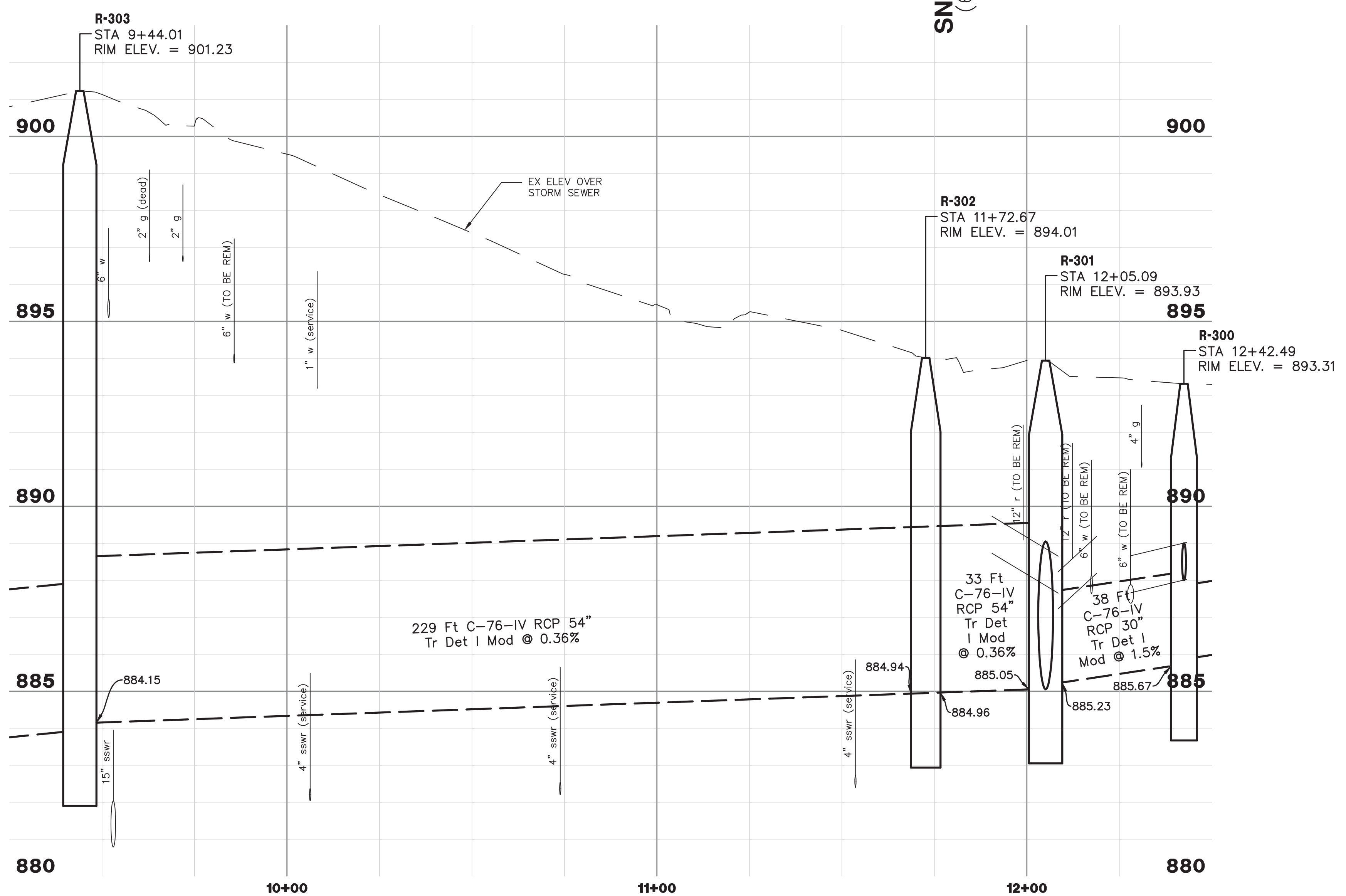
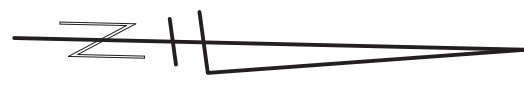
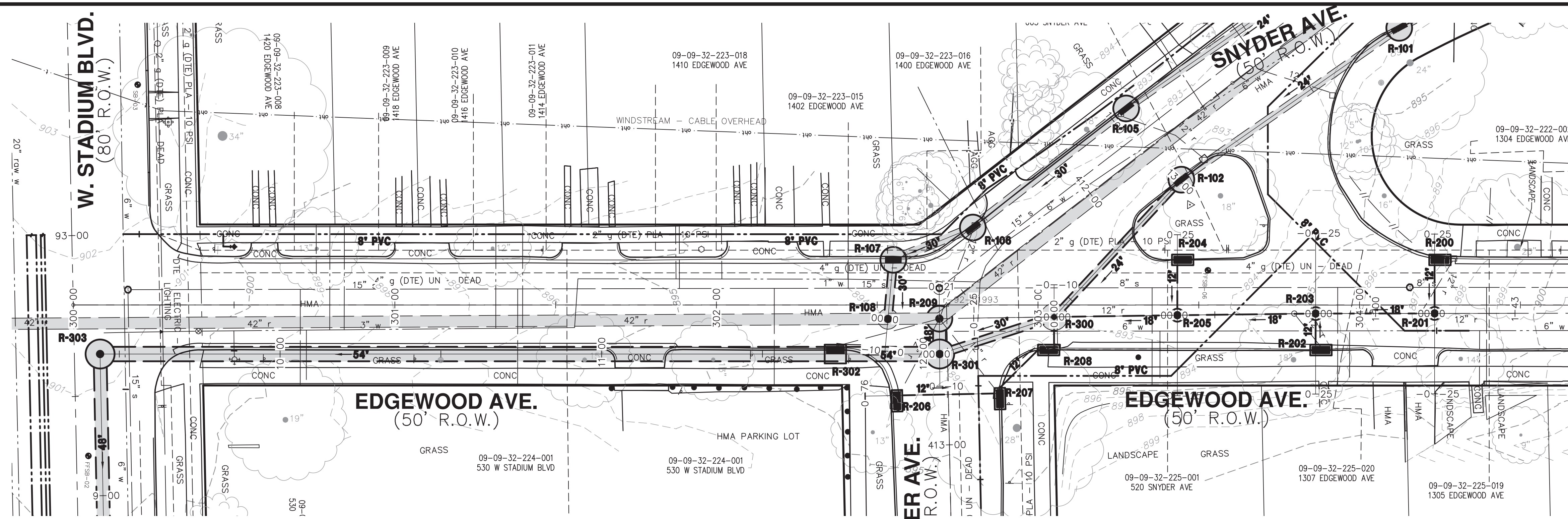
CITY OF ANN ARBOR
PUBLIC SERVICES
301 EAST HURON STREET
ANN ARBOR, MI 48106-1667
www.a2gov.org



PROJECT MANAGEMENT - PUBLIC SERVICES - CITY OF ANN ARBOR
SNYDER-EDGEWOOD STORMWATER
IMPROVEMENT PROJECT
UTILITIES - STORM SEWER
SNYDER AVENUE


SCALE PLAN: 1" = 20'
PROFILE: 1" = 4'
DRAWING No. #####-UT01

Z:\NCL\Canton\1825020(AA-Snyder)\Design\5-Snyder-UT.dwg Dwg Created: 4-Nov-19 --_g2 standard bw.stb -- Plot Date: 5-Nov-19




STRUCTURE/ STATION, OFFSET	TOP OF CASTING ELEV.	INVERT ELEV. SIZE DIRECTION	DEPTH (FEET)	SIZE	APPLICATION/ CONSTRUCTION/ DETAIL
R-209 / 302+69.34, 4.27' RT 412+60.15, 2.31' RT	893.87 IP	887.65 12" SE (IREM) 887.23 12" NE (IREM) 887.20 12" N (IREM) 885.13 42" NW (EX) 885.07 42" S (EX) 885.05 36" E	10.82'	6" DIA.	REPLACE EXISTING STORM MANHOLE, NEW, COVER B, (UD #X)
R-300 / 303+05.00, 3.73' RT 412+32.42, 23.42' RT	893.31 IP	888.00 12" E 887.82 18" N 885.93 24" NW 885.87 30" SE	9.64'	8" DIA.	STORM MANHOLE, NEW, COVER B, (UD #X)
R-301 / 302+69.42, 15.25' RT	893.93 IP	885.23 30" NW 885.05 48" W 885.05 54" S	10.88'	9" DIA.	STORM MANHOLE, NEW, COVER B, (UD #X)
R-302 / 302+37.00, 14.00' RT	894.01 IP	884.96 54" N 884.94 54" S	11.03'	SPECIAL	H-V DROP INLET, NEW, COVER K, (UD #X)
R-303 / 300+08.34, 15.25' RT 93+36.98, 8.00' LT	901.23 IP	884.15 54" N 883.90 48" E	19.33'	9" DIA.	STORM MANHOLE, NEW, COVER B, (UD #X)
r-88-62436/ 302+55.75, 30.64' RT	893.35	888.73 12" NW	4.62'	12" DIA.	EX INLET
r-88-62437/ 302+38.69, 12.42' RT	893.37	888.77 12" W	4.60'	12" DIA.	EX INLET
r-88-62442/ 304+28.81, 13.46' LT	896.90	893.97 12" SE	2.93'	12" DIA.	EX INLET
r-88-62443/ 303+87.76, 12.89' RT	894.62	892.97 6" E 892.20 12" SW	2.42'	12" DIA.	EX INLET
r-88-62444/ 303+06.09, 12.36' RT	892.53	888.17 12" W	4.36'	12" DIA.	EX INLET
r-88-62445/ 302+87.23, 27.02' RT	892.83	888.19 12" SW	4.64'	12" DIA.	EX INLET
r-92-51975/ 303+79.70, 2.69' RT	894.72	890.09 12" N 889.76 12" NE 889.68 12" S	5.04'	12" DIA.	EX STORM MANHOLE
SMH #435497/ 300+17.00, 4.74' LT	901.57	881.05 15" N 880.86 15" E	20.71'	15" DIA.	EX SANITARY MANHOLE
SMH #436423/ 304+15.63, 5.47' LT	896.81	886.24 8" N 883.93 8" S	12.88'	8" DIA.	EX SANITARY MANHOLE

(e) = Existing Structure Rim Elevation IP = Proposed Structure Rim Elevation (IA) = Operator Access Rim Elev.



Know what's below.
Call before you dig.

REV.	DESCRIPTION	DATE	DRAWN	CHECKED
01	CONCEPTUAL SCHEMATIC	08/06/2019	FISHBECK	AK



CITY OF ANN ARBOR
PUBLIC SERVICE
301 EAST HURON STREET
P.O. BOX 8647
ANN ARBOR, MI 48107-8647
www.a2gov.org

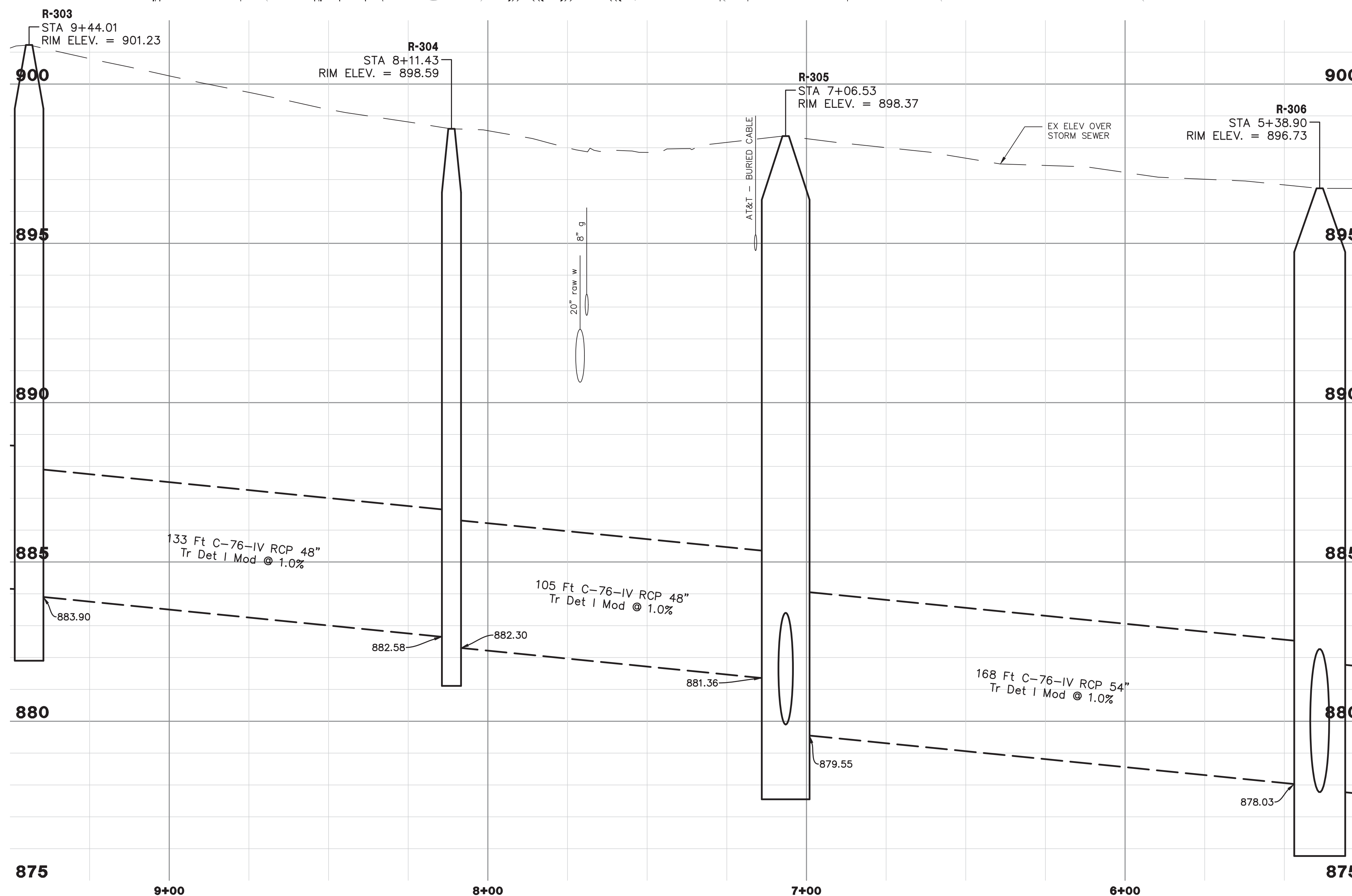
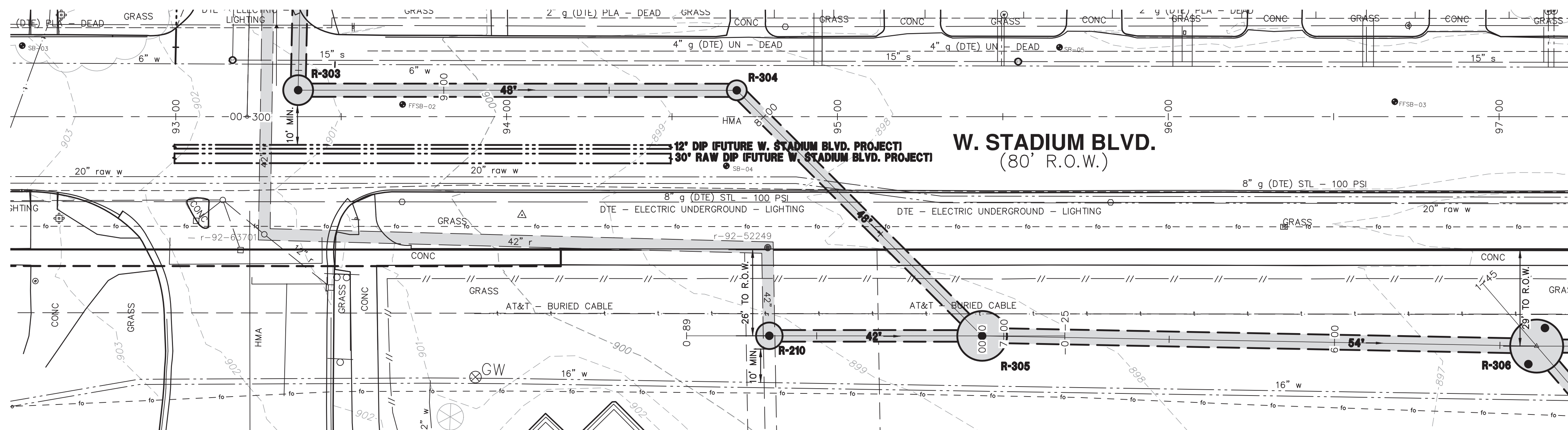
PROJECT MANAGEMENT - PUBLIC SERVICES - CITY OF ANN ARBOR
SNYDER-EDGEWOOD STORMWATER
IMPROVEMENT PROJECT
 UTILITIES - STORM SEWER
 EDGEWOOD AVENUE

SCALE PLAN: 1" = 20'
 PROFILE: 1" = 4'

DRAWING No.
 #####-UT02

SHEET No.
 02 OF 05

Z:\NCL\Canton\18255020(AA-Snyder)\Design\UT.dwg Dwg Created: 4-Nov-19 - _a2 standard bw.stb - Plot Date: 5-Nov-19



STRUCTURE/ STATION, OFFSET	TOP OF CASTING ELEV.	INVERT ELEV. SIZE DIRECTION	DEPTH (FEET)	SIZE	APPLICATION/ CONSTRUCTION/ DETAIL
R-303 / 93+36.98, 8.00' LT 300+08.34, 15.25' RT	901.23 IPI	884.15 54" N 883.90 48" SE	19.33'	9' DIA.	STORM MANHOLE, NEW, COVER B, (UD #X)
R-304 / 94+69.56, 42.50' RT	898.59 IPI	882.58 48" W 882.30 48" SE	16.86'	6' DIA.	STORM MANHOLE, NEW, COVER B, (UD #X)
R-305 / 95+43.73, 66.23' RT	898.37 IPI	881.36 48" NW 879.90 42" W 879.55 54" E	20.82'	15" DIA.	STORM MANHOLE, NEW, COVER B, (UD #X)
R-306 / 97+11.34, 69.31' RT	896.73 IPI	878.03 54" W 877.77 48" E 877.77 54" E	20.96'	16" DIA.	DIVERSION CHAMBER, NEW, COVER B, (UD #X)
r-92-63701/ 93+26.74, 35.55' RT	901.25 (e)	897.13 12" SW 895.61 12" SE 887.74 12" NW 883.94 42" N 883.93 42" E	17.32'	X' DIA.	RETAIN EX MANHOLE
r-92-52249/ 94+78.92, 39.57' RT	898.39' (e)	887.29 TO PARTITION WALL 880.87 42" W 880.87 42" S *CHANNEL BOTTOM	17.52'	X' DIA.	RETAIN EX MANHOLE
r-88-62533/ 93+45.96, 50.84' RT	900.87	895.89 12" NW	4.98'	12" DIA.	EX INLET
r-88-64477/ 93+19.22, 39.29' RT	901.47	897.29 12" NW	4.18'	12" DIA.	EX INLET
r-88-64478/ 93+06.94, 30.84' RT	901.64	899.03 4" SW 897.36 12" NE	4.28'	12" DIA.	EX INLET
r-92-52249/ 94+78.92, 39.57' RT	898.39	887.29 TO PARTITION WALL 880.87 42" W 880.87 42" S *CHANNEL BOTTOM	17.52'	X' DIA.	RETAIN EX MANHOLE
r-92-52250/ 93+14.19, 25.16' RT	901.46	896.97 12" SW 896.92 12" SE 893.14 12" SW 892.90 12" SE	8.56'	12" DIA.	EX STORM MANHOLE
r-92-63701/ 93+26.74, 35.55' RT	901.25	897.13 12" SW 895.61 12" SE 887.74 12" NW 883.94 42" N 883.93 42" E	17.32'	X' DIA.	RETAIN EX MANHOLE
SMH #435496/ 95+54.62, 16.64' LT	897.43	886.60 6" NW 886.45 6" NE 880.00 15" W 879.95 15" E	17.48'	15" DIA.	EX SANITARY MANHOLE

(e) = Existing Structure Rim Elevation IPI = Proposed Structure Rim Elevation (IA) = Operator Access Rim Elev.

Know what's below.
Call before you dig.

01	CONCEPTUAL SCHEMATIC	DATE	08/06/2019	REV.	CHECKED	AK	DRAWN	NCI	DATE

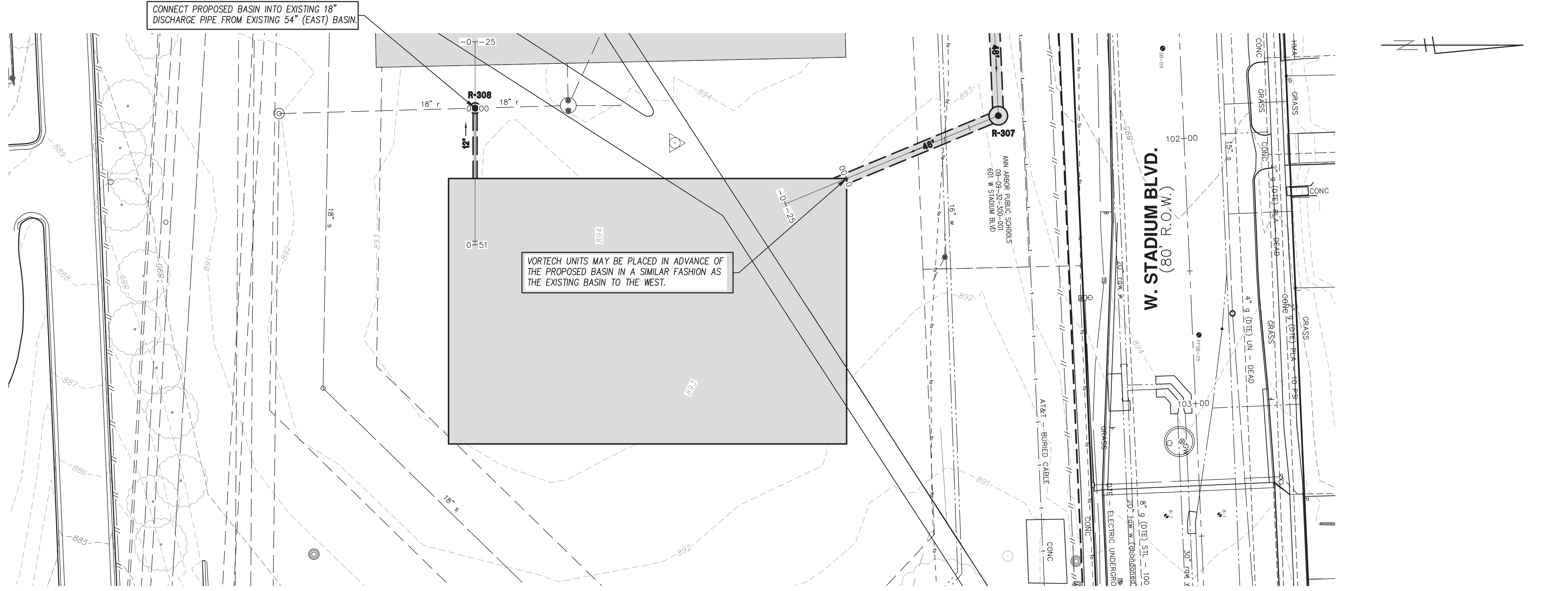
CITY OF ANN ARBOR
PUBLIC SERVICES
301 EAST HURON STREET
ANN ARBOR, MI 48106-0647
www.a2gov.org

PROJECT MANAGEMENT - PUBLIC SERVICES - CITY OF ANN ARBOR
SNYDER-EDGEWOOD STORMWATER IMPROVEMENT PROJECT
UTILITIES - STORM SEWER
W. STADIUM BLVD. STA 92+50 TO STA 97+25

SCALE PLAN: 1" = 20'
PROFILE: 1" = 4'

DRAWING No. **#####-UT03**

SHEET No. **03 OF 05**



VORTECH UNITS MAY BE PLACED IN ADVANCE OF THE PROPOSED BASIN IN A SIMILAR FASHION AS THE EXISTING BASIN TO THE WEST.

CONNECT PROPOSED BASIN INTO EXISTING 18" DISCHARGE PIPE FROM EXISTING 54" (EAST) BASIN.

STRUCTURE/ STATION, OFFSET	TOP OF CASTING ELEV.	INVERT ELEV. SIZE DIRECTION	DEPTH (FEET)	SIZE	APPLICATION/ CONSTRUCTION/ DETAIL
CB #507806/ 102+40.72, 91.98 RT	892.53	889.66 4" W 889.21 6" SE	3.32'	6" DIA.	EX INLET
CB #x (sidewalk)/ 101+77.42, 231.23' RT	894.08	889.27 12" NW 886.43 12" NW 871.14 18" W 871.04 18" S	23.04'	18" DIA.	EX INLET
CB #x (gross)/ 101+75.64, 340.25' RT	891.98	870.82 18" N 870.63 18" E	21.35'	18" DIA.	EX INLET
SMH #435493/ 102+66.69, 15.36' LT	894.28	878.04 15" W 877.92 15" NE	16.36'	15" DIA.	EX SANITARY MANHOLE

PROJECT MANAGEMENT - PUBLIC SERVICES - CITY OF ANN ARBOR
 SNYDER-EDGEWOOD STORMWATER
 IMPROVEMENT PROJECT
 UTILITIES - STORM SEWER
 PIONEER HIGH SCHOOL PROPOSED BASIN



SHEET No. 06 OF 05



CITY OF ANN ARBOR
 PUBLIC SERVICE
 301 EAST HURON STREET
 ANN ARBOR, MI 48106-1667
 www.aagov.org

REV.	DESCRIPTION	DATE	DRAWN	CHECKED
01	CONCEPTUAL SCHEMATIC	08/06/2019	FISBECK	AK

