



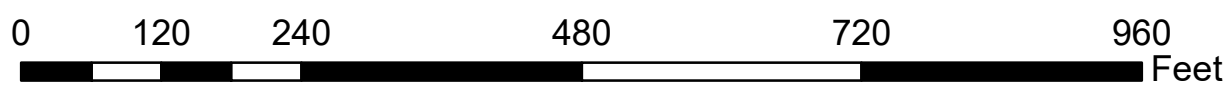
Legend

-  Project Location
-  Parcels

Northside SRTS Sidewalk Gaps, Location and Length (ft)
Traver - Barton to John A Woods, 1800'
Barton - North Side, West of Starwick, 300'
John A Woods - South Side, East of Pontiac, 200'
Brookside - Pontiac to Delafield, 450'
Starwick - West Side, North of Barton, 125'





Sidewalk Gaps

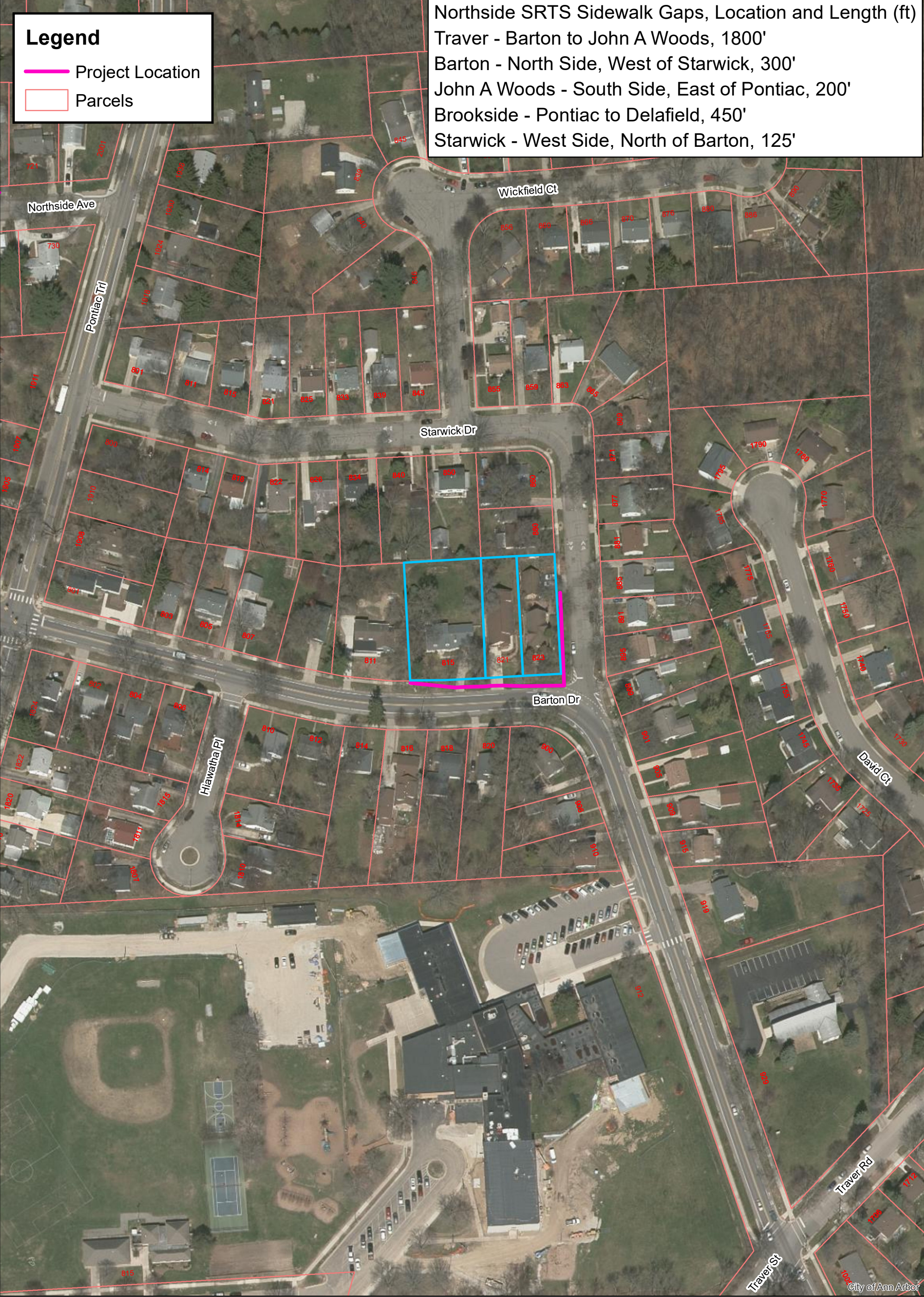


For terms and conditions of this map, please see www.a2gov.org/terms for more information.

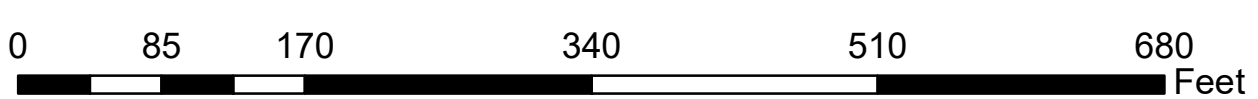
Legend

-  Project Location
-  Parcels

Northside SRTS Sidewalk Gaps, Location and Length (ft)
Traver - Barton to John A Woods, 1800'
Barton - North Side, West of Starwick, 300'
John A Woods - South Side, East of Pontiac, 200'
Brookside - Pontiac to Delafield, 450'
Starwick - West Side, North of Barton, 125'





Sidewalk Gaps

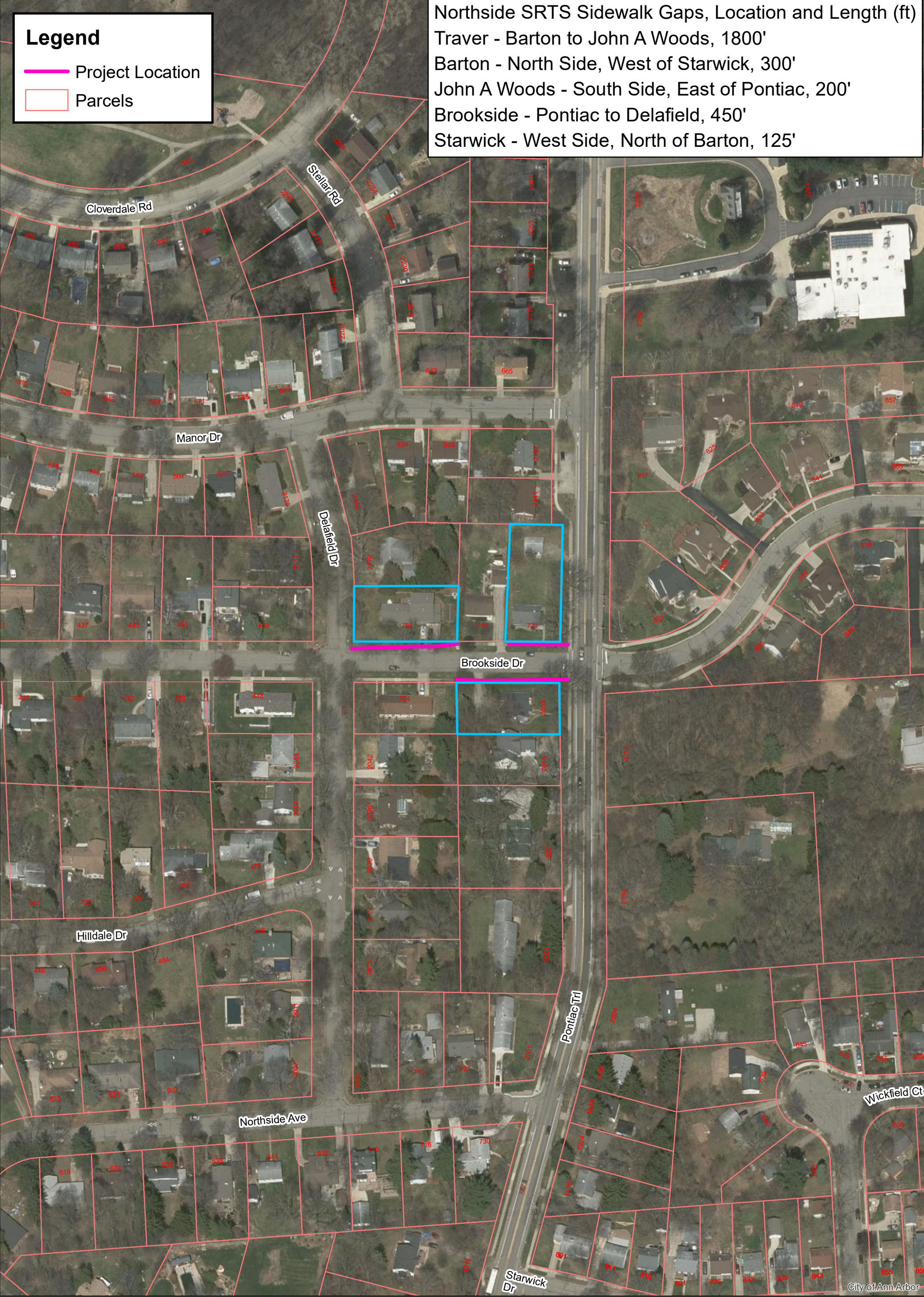


For terms and conditions of this map, please see www.a2gov.org/terms for more information.

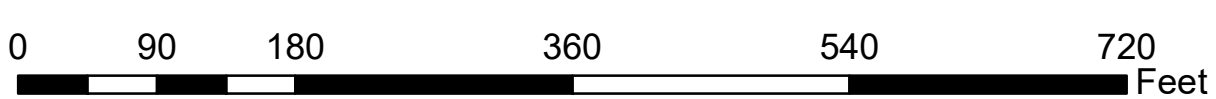
Legend

-  Project Location
-  Parcels

Northside SRTS Sidewalk Gaps, Location and Length (ft)
Traver - Barton to John A Woods, 1800'
Barton - North Side, West of Starwick, 300'
John A Woods - South Side, East of Pontiac, 200'
Brookside - Pontiac to Delafield, 450'
Starwick - West Side, North of Barton, 125'



Sidewalk Gaps



For terms and conditions of this map, please see www.a2gov.org/terms for more information.