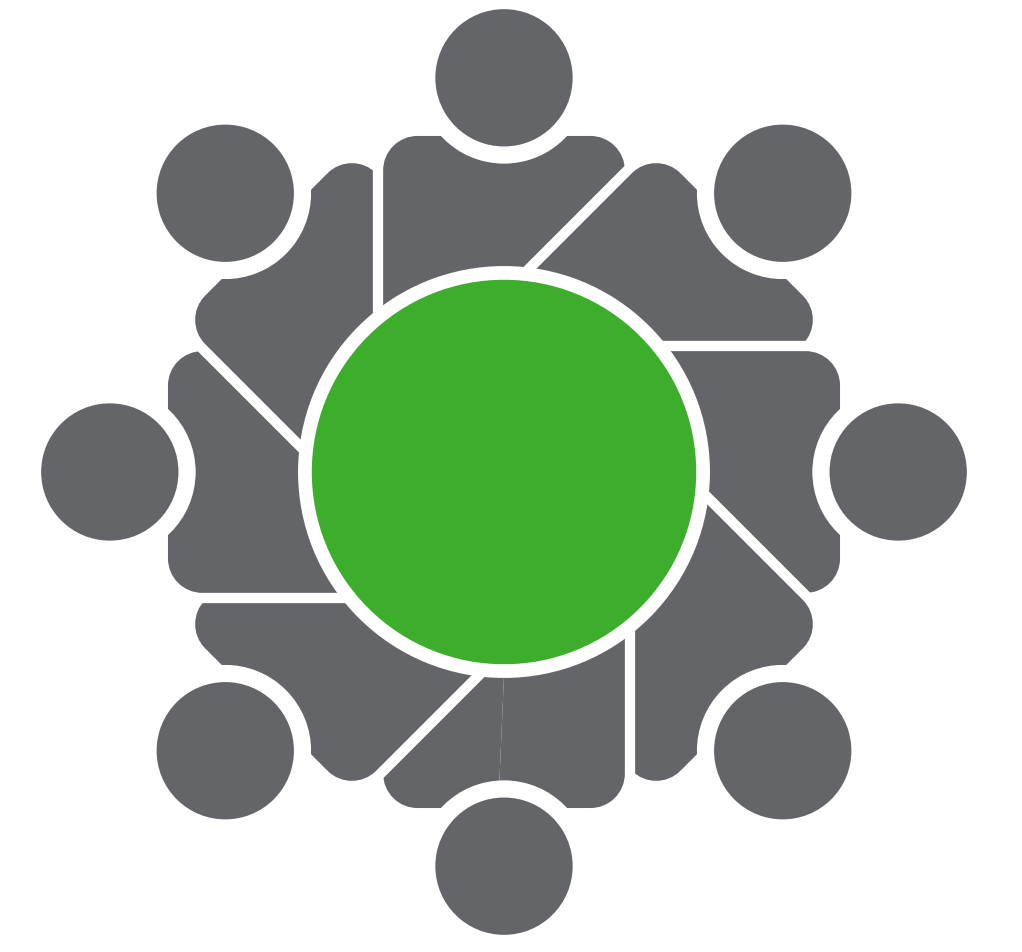


# NIXON CORRIDOR IMPROVEMENTS OVERVIEW

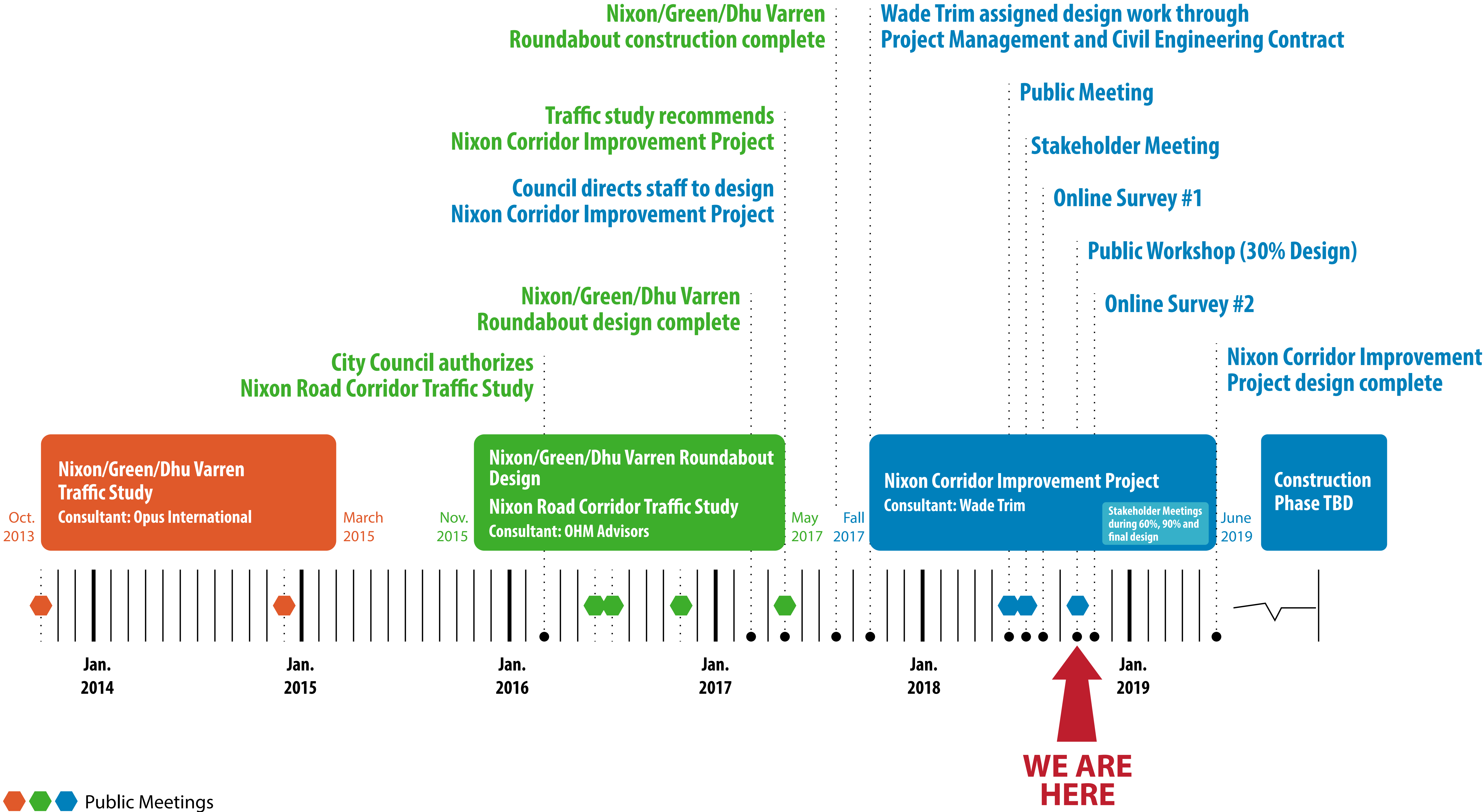


Roundabouts selected as preferred alternative from 2017 study to meet project goals:

- Improve safety
- Increase non-motorized facilities
- Reduce user delays and improve access

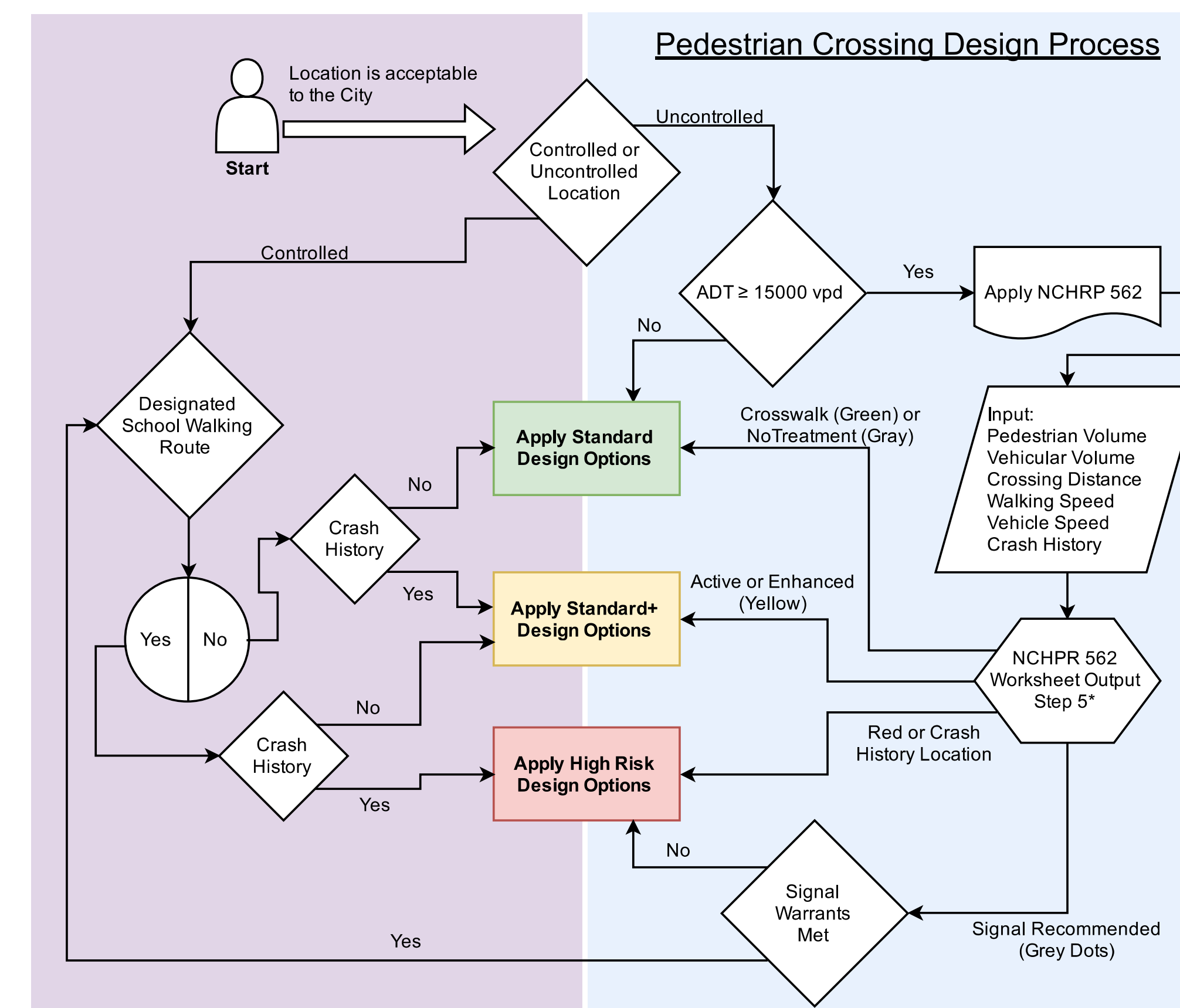
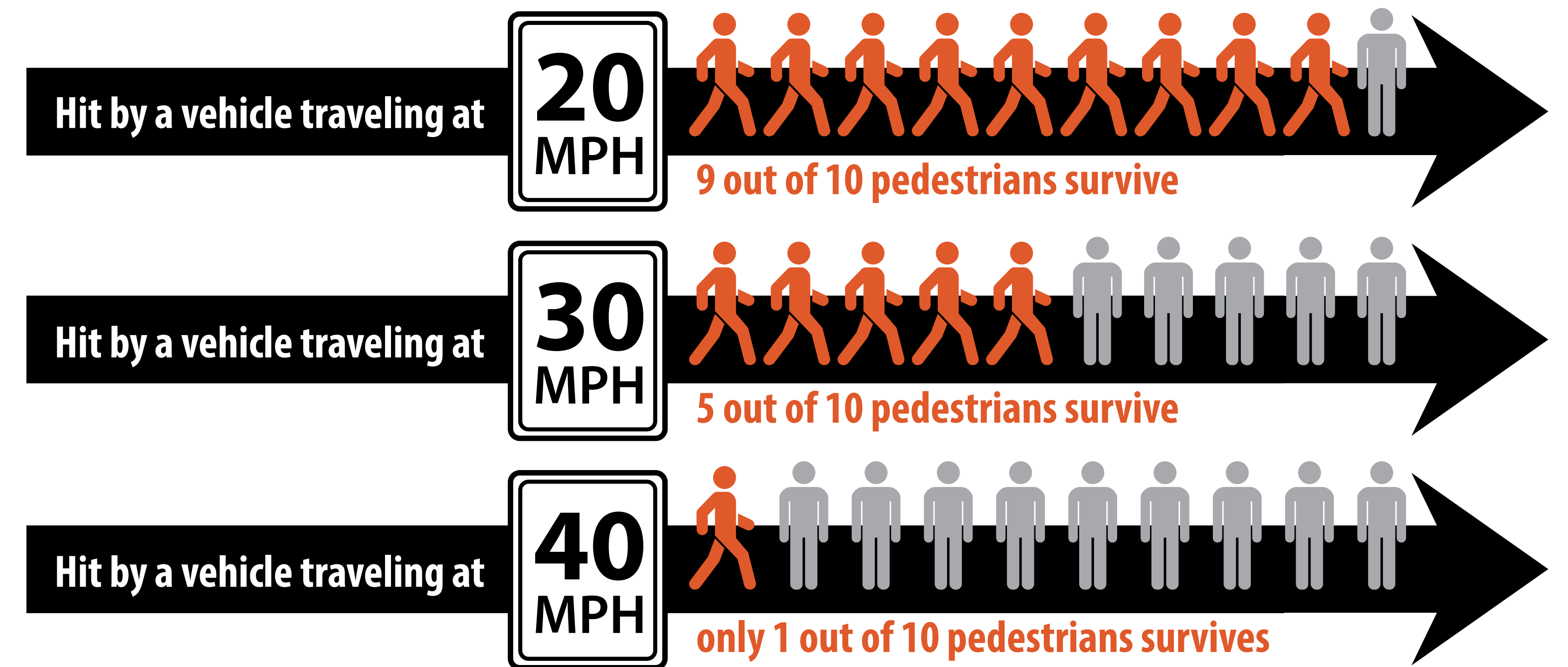
Continuation of past Nixon Road Corridor Traffic Study

# PROJECT TIMELINE

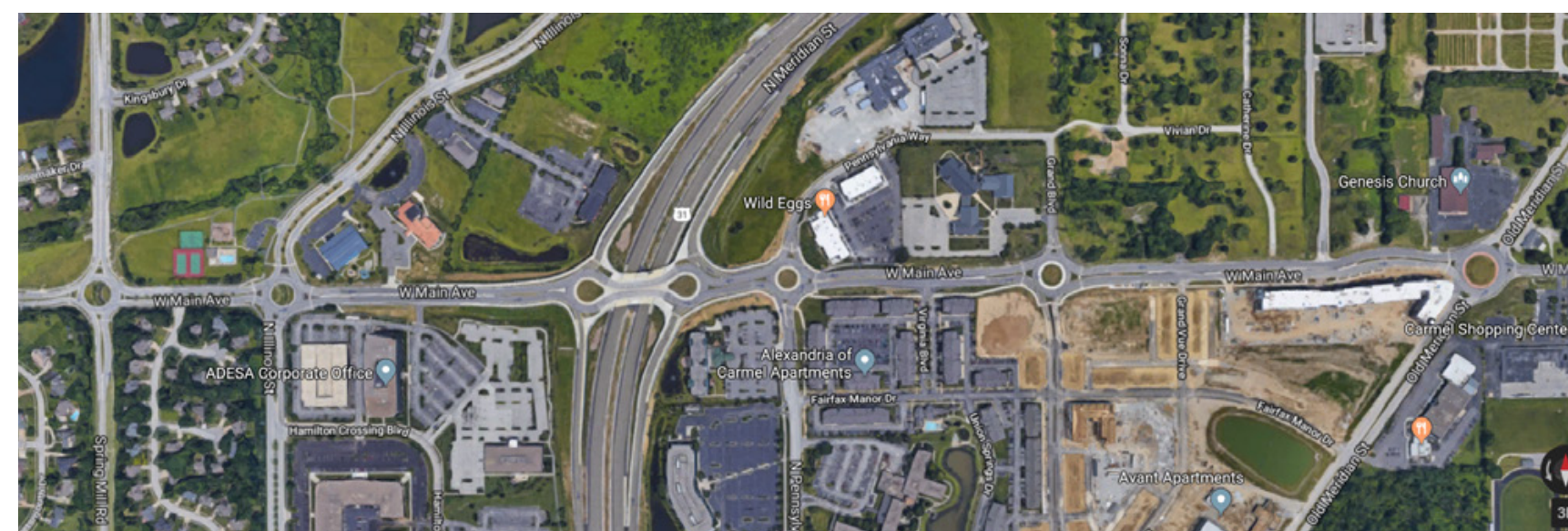


# PEDESTRIAN SAFETY

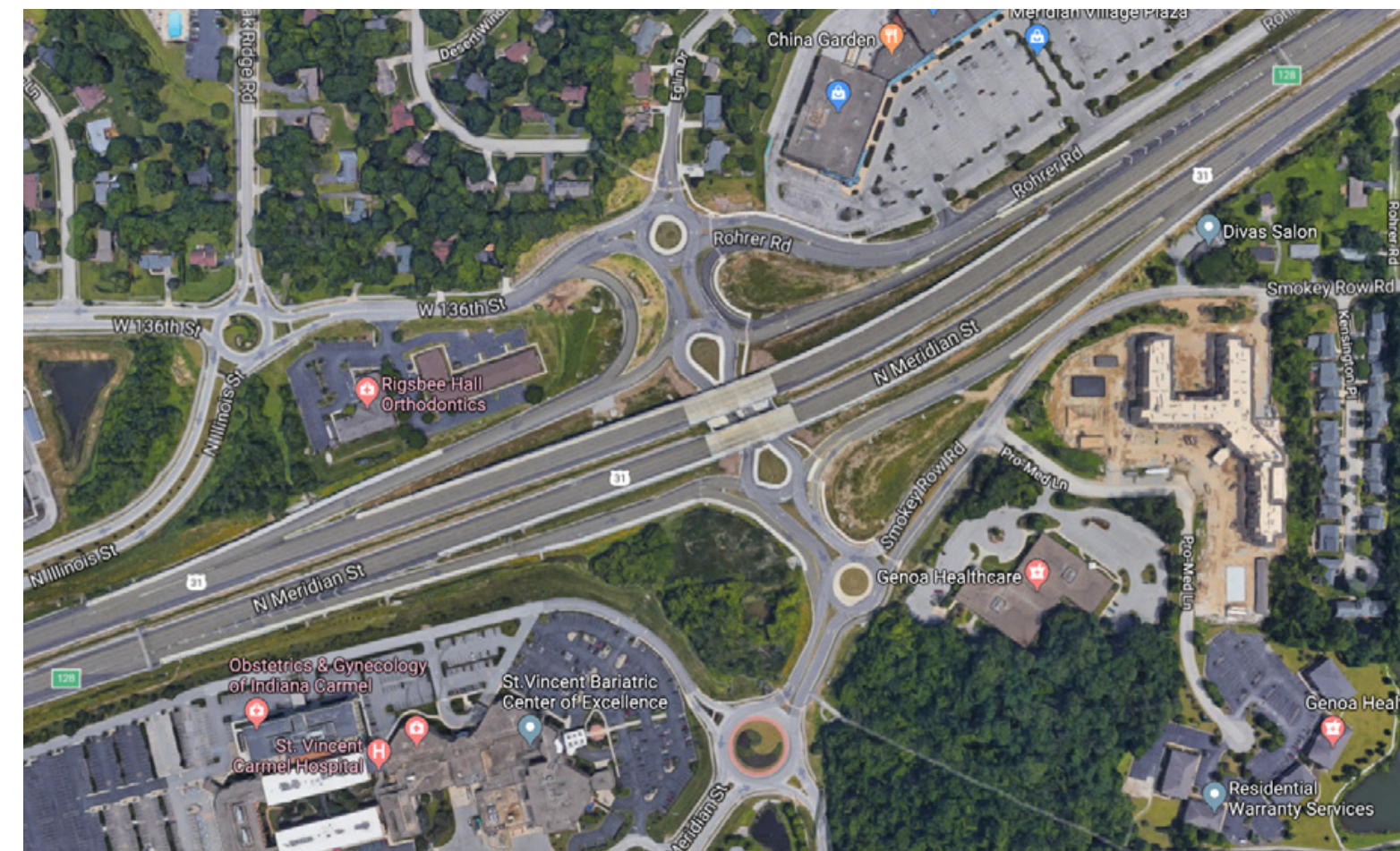
- Single lane roundabouts reduce speeds (<20 mph)
- City crosswalk guidelines to establish level of treatments
- ADA guidelines are integral to designs
- Crosswalk design considers wayfinding, sight distance and visibility, and treatments



# SIMILAR ROUNDABOUT USE AT OTHER LOCATIONS



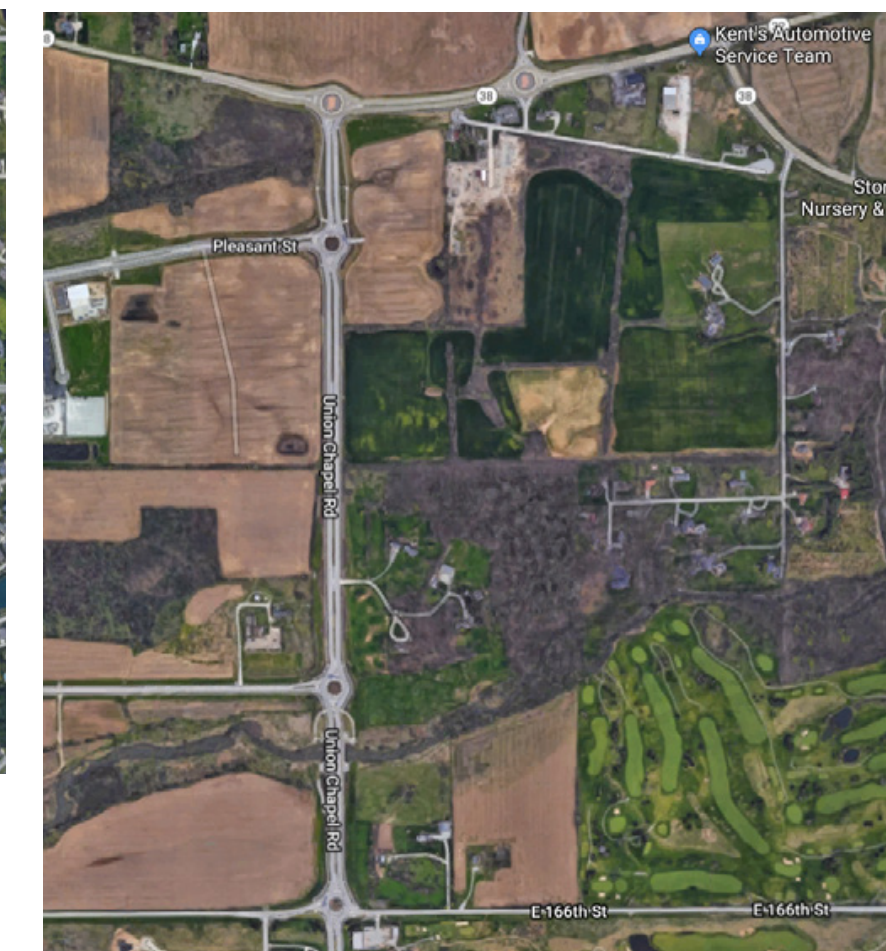
**Carmel, Indiana**  
7 roundabouts within 1 mile



**Carmel, Indiana**  
6 roundabouts within 0.5 mile



**Carmel, Indiana**  
4 roundabouts within 1 mile



**Carmel, Indiana**  
5 roundabouts within 1.1 miles



**Avon, Colorado**  
5 roundabouts within 0.5 mile



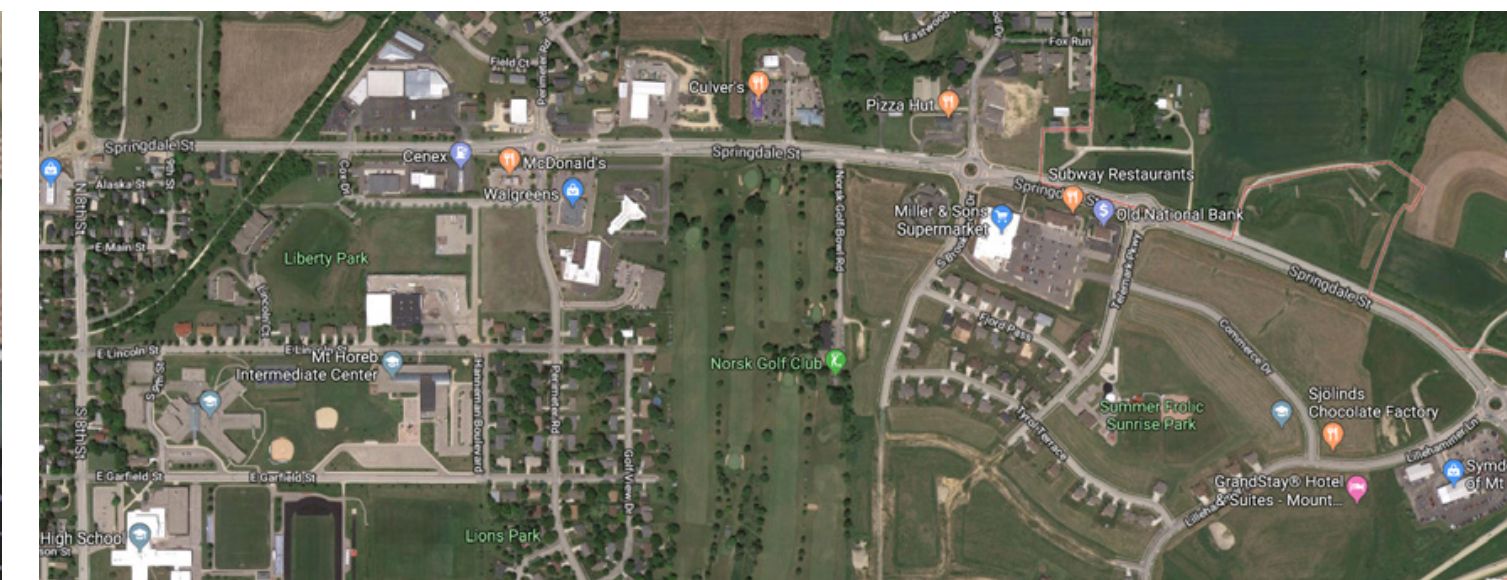
**Avon, Colorado**  
5 roundabouts within 0.7 mile



**Sun Prairie, Wisconsin**  
3 roundabouts within 0.5 mile



**Appleton, Wisconsin**  
4 roundabouts within 0.75 mile



**Mount Horeb, Wisconsin**  
5 roundabouts within 1.5 miles



**Golden, Colorado**  
4 roundabouts within 0.7 mile  
(and 2 in adjacent neighborhood)