

Things to Know

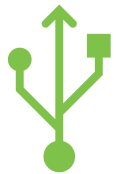
- The video, speaking, and screen sharing functions are disabled for participants to avoid offensive content.
- You can leave and rejoin the meeting at any time (unless the meeting is at capacity, or you are removed for inappropriate behavior).
- You can communicate through the Q&A feature.
- Opportunities for questions will be provided throughout the presentation.
- Presentation and additional materials are available www.a2gov.org/pontiac



Pontiac, Swift, Wright, and Moore Street Improvements

Public Engagement Meeting No. 2 – Design Updates
November 29, 2022

City of Ann Arbor – Public Services Area – Engineering

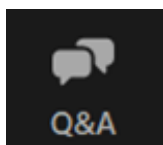


Technology Overview

Ask a Question or Share a Comment

Computer

- Please use the Q&A feature located at the bottom of the screen to ask a question/comment.
- Type your question/comment.
- Click **Send**.



Q&A

You asked: 18:03
What happens when I raise my hand?

Molly Parker answered: 18:04
I can take you off of mute.

Please input your question

Send Anonymously Send

We will be using the Q&A feature for those using a computer and the “Raise Hand” feature for those who are on the phone.

Phone

- Select *9 to raise your hand
- You will be identified by the last 3 digits of your phone number





Zoom Meeting Norms

- Commit to learning and avoid speculation.
- Please remember the importance of rights and the dignity of others.
We ask that you:
 - Critique ideas, not people,
 - Are thoughtful about your language,
 - Inappropriate written and/or verbal comment or language will result in the attendee being removed from the meeting.



Follow-up Expectations

- Your feedback will be considered in the recommended design along with technical and cost considerations;
- The project team will reach out to you directly for coordination if the project has the potential to impact your private property;
- An update will be provided on final construction plans and construction coordination via website and email notifications.

Agenda



1. **Introductions**
2. **Project Limits - Project Purpose**
3. **Anticipated Elements of the Project**
4. **What We Heard & What We Are Doing**
5. **Concepts**
6. **Maintenance of Traffic (MOT)**
7. **What to Expect**
8. **Project Timeline**
9. **Questions & Answers**
10. **Next Steps**



Project Staff



City of Ann Arbor – Engineering

Christopher Wall, P.E.

Senior Project Manager

w/ Wade Trim

e-mail: cwall@a2gov.org

Phone: (734) 947-2607

City of Ann Arbor – Systems Planning

Michelle Bennett, AICP

Public Engagement Specialist

e-mail: mbennett@a2gov.org

Phone: (734) 794-6430 ext. 43704

Wade Trim

Vaughn Martin, P.E., Project Manager (vmartin@wadetrim.com)

Carmelle Tremblay, P.E., Design Manager (ctremblay@wadetrim.com)

Breanna Anderson, P.E., Design Lead (banderson@wadetrim.com)



Project Limits



Swift Street

- From Broadway Street to Wright Street

Pontiac Trail

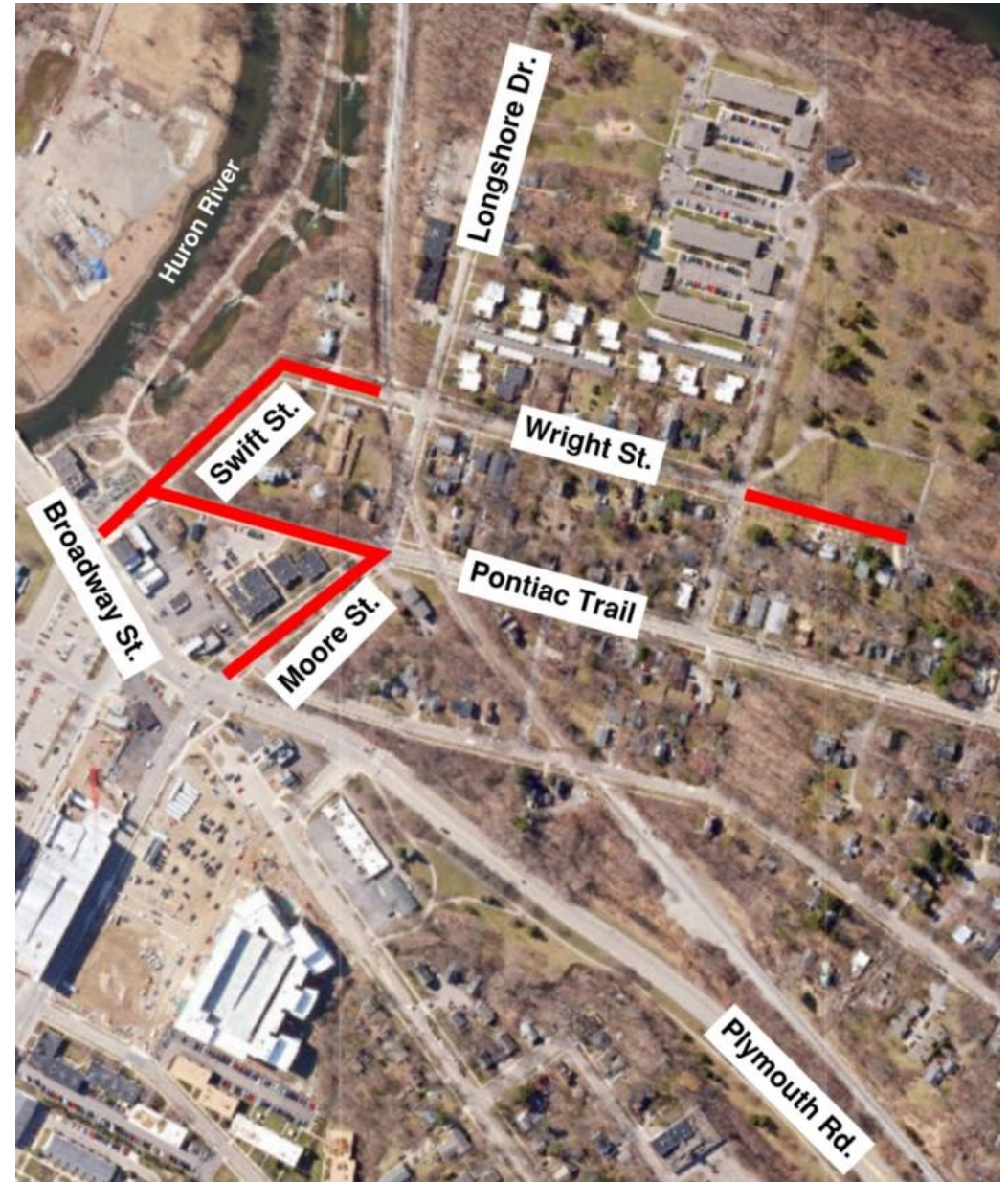
- From Swift Street to Moore Street

Moore Street

- From Broadway Street to Pontiac Trail

Wright Street

- From Swift Street to Railroad Tracks
- From Kellogg Street to Dead End





Project Purpose

This project **PURPOSE:**

- Update and maintain the city's aging watermain and right of way infrastructure to increase its longevity.
 - Upsize existing watermains
 - Repave roads

In order to:

- Maintain and improve quality of water main services;
- Improve flow of traffic and/or bicycles;
- Encourage safe pedestrian crossings.



Anticipated Elements of the Project

- Replacement of watermain on Swift Street, Pontiac Trail, and Wright Street;
- Consolidation of watermain on Moore Street;
- Pavement resurfacing on all roads included in project scope;
- Repairs to storm inlets to improve drainage;
- ADA (Americans with Disabilities Act) ramp upgrades along with potential bump-outs and crosswalk improvements;
- New bike lane on Moore Street, planning to maintain existing on-street parking;
- Potential new bike lane on Pontiac Trail;
- Potential water service replacement at selected locations;
- Preservation of historic cobblestone gutters on Wright Street.



What We Heard & What We Are Doing

What We Heard

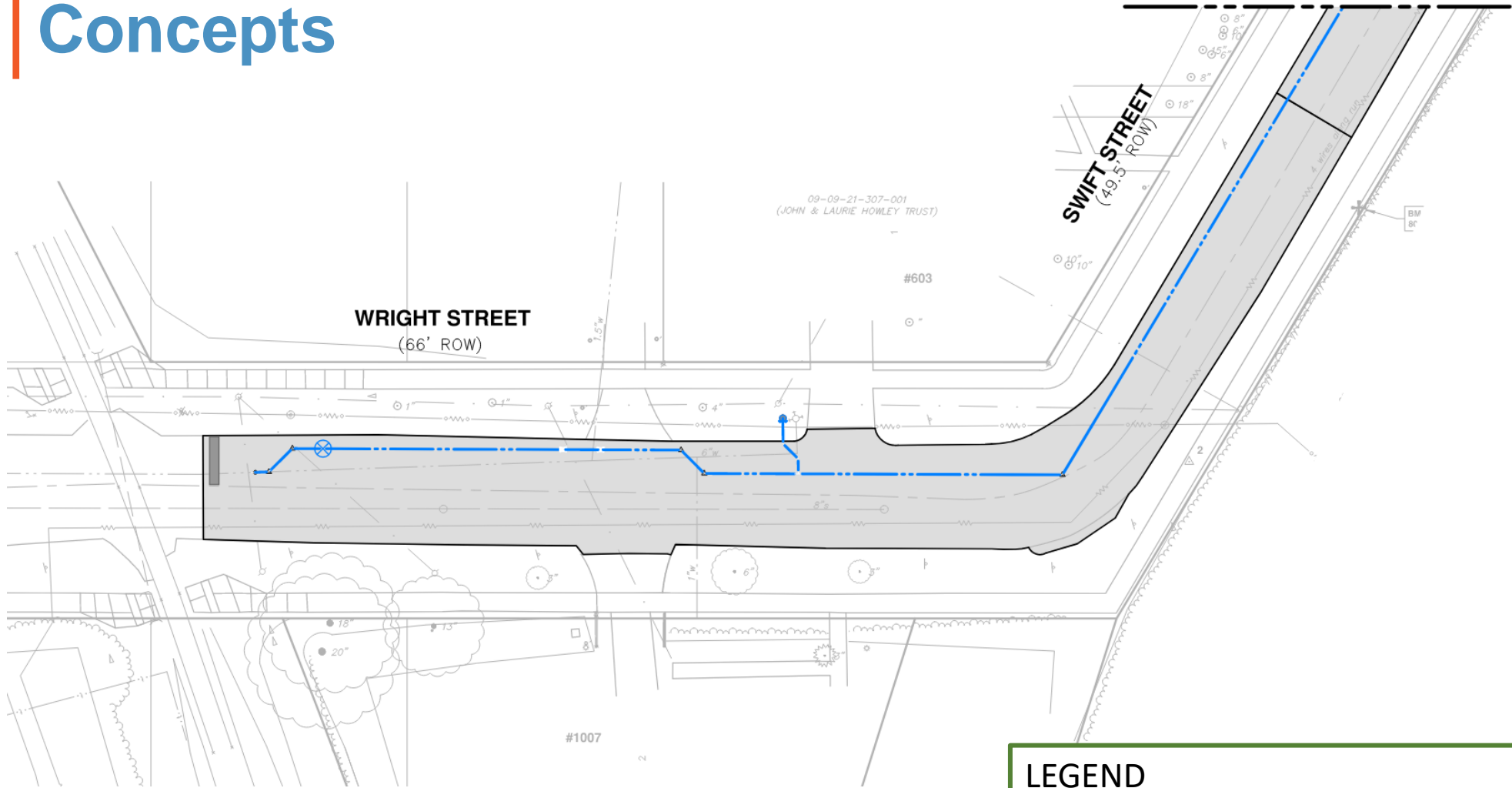
- Lower Town Area Mobility Study
- Pedestrian priority at Pontiac & Swift intersection
- Need Pontiac Trail bike lane and connection to Border-to-Border Trail
- Drainage concern on Wright, south of Kellogg
- Maintenance of traffic during construction

What We Are Doing

- Study recommendations included where feasible
- Adding bump-out, signage, markings
- Studying feasibility and connections of bike lanes
- Reviewing drainage within project limits
- Developing concepts to keep traffic moving



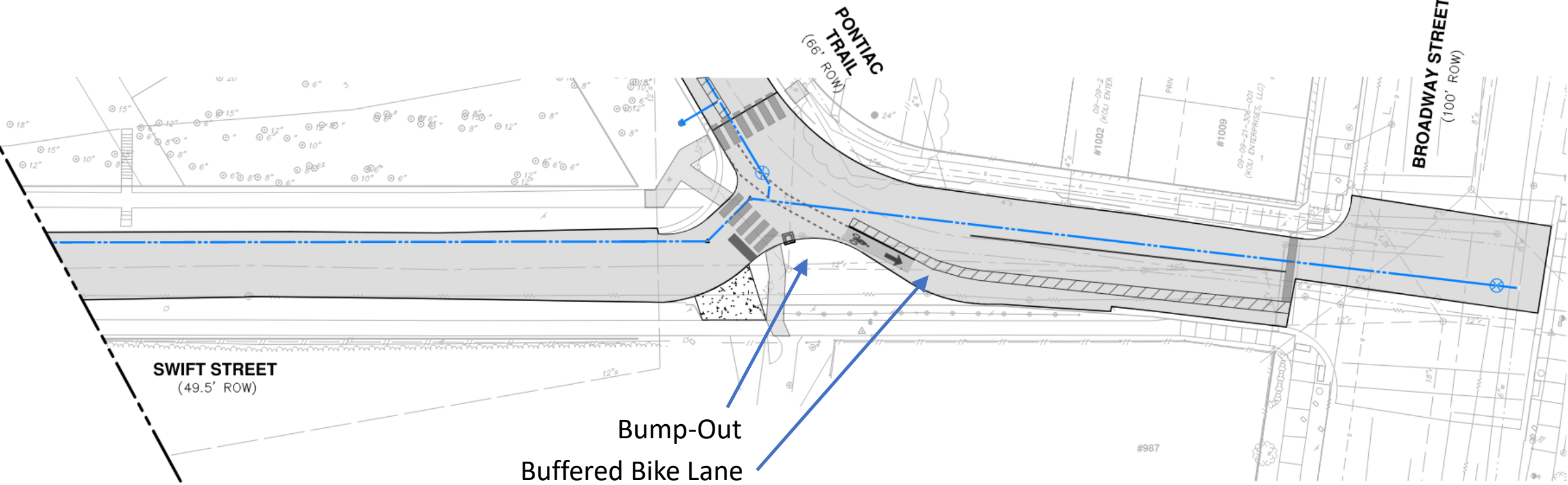
Concepts



LEGEND

-  Approximate Road Limits
-  Proposed Watermain

Concepts



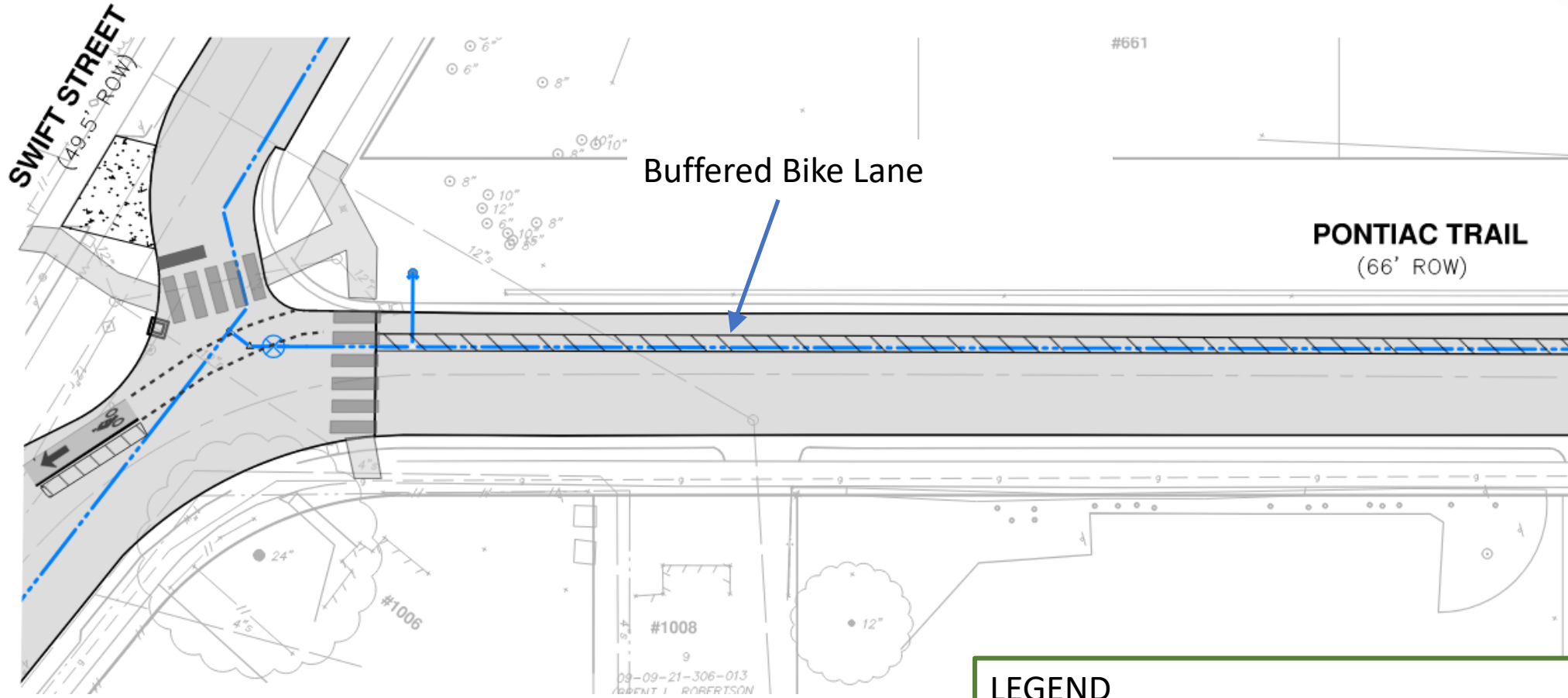
Bump-Out
Buffered Bike Lane

LEGEND

-  Approximate Road Limits
-  Proposed Watermain



Concepts

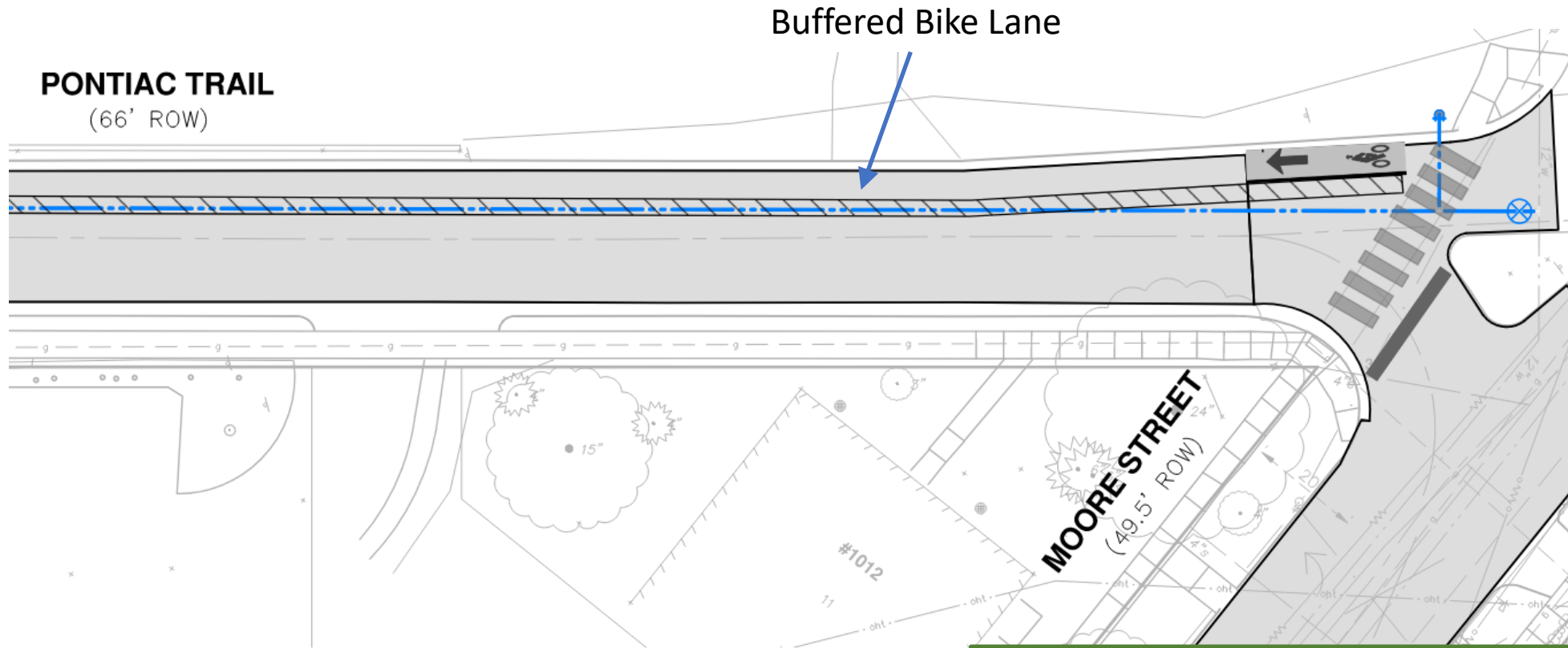


LEGEND

-  Approximate Road Limits
-  Proposed Watermain

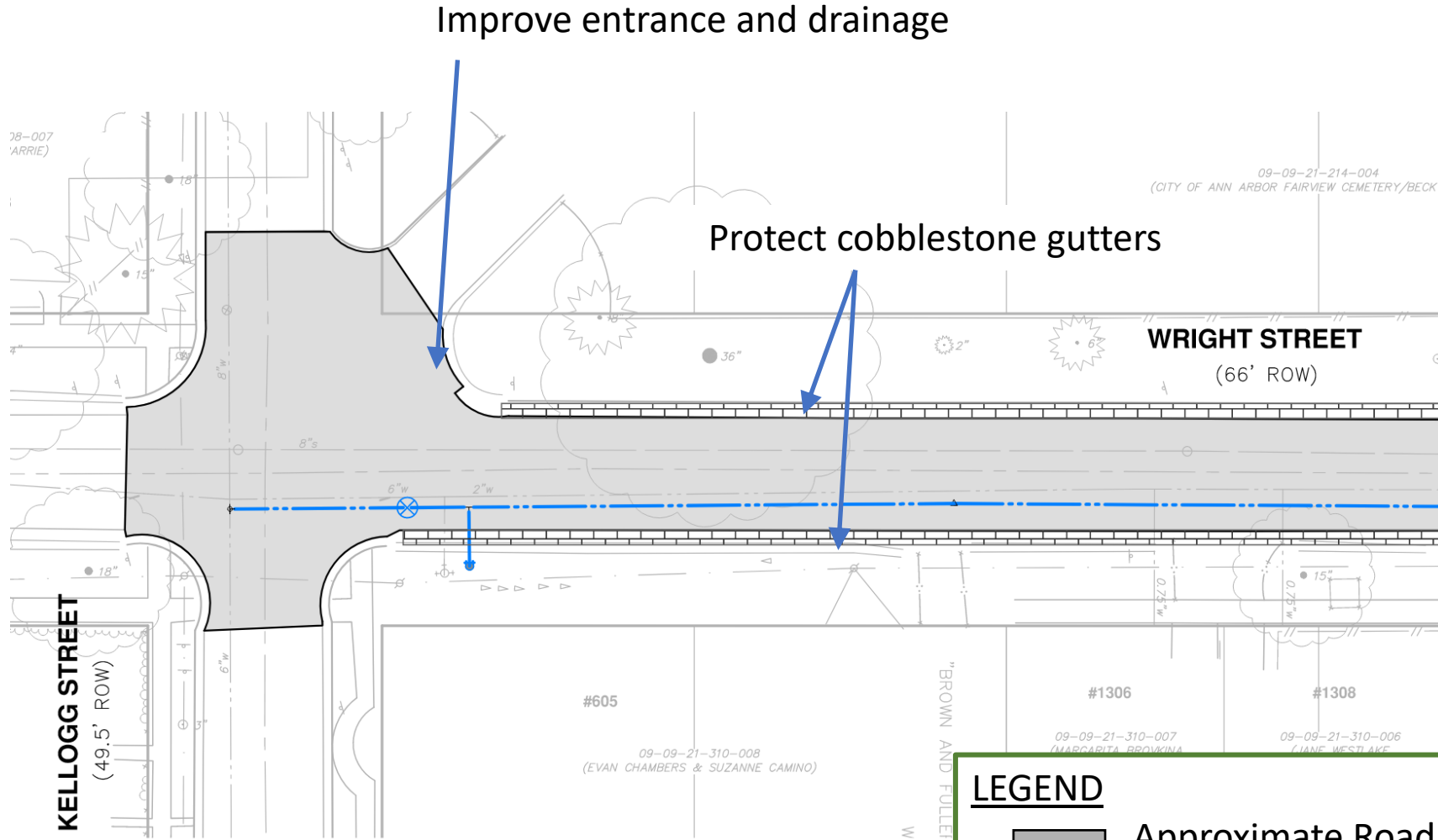


Concepts



LEGEND

-  Approximate Road Limits
-  Proposed Watermain

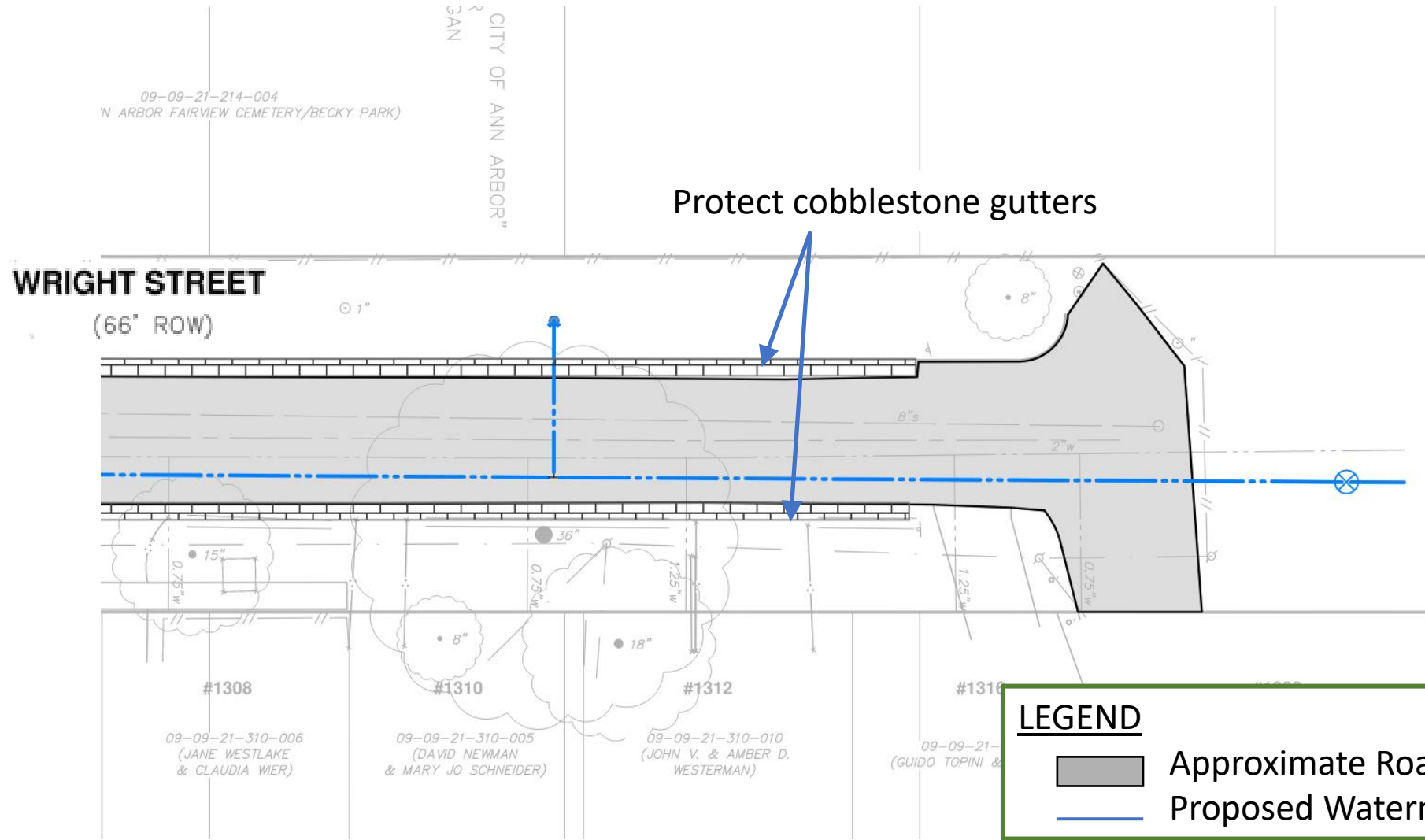


LEGEND



-  Approximate Road Limits
-  Proposed Watermain



Concepts



LEGEND

-  Approximate Road Limits
-  Proposed Watermain



Maintenance of Traffic (MOT)

Moore St Construction:

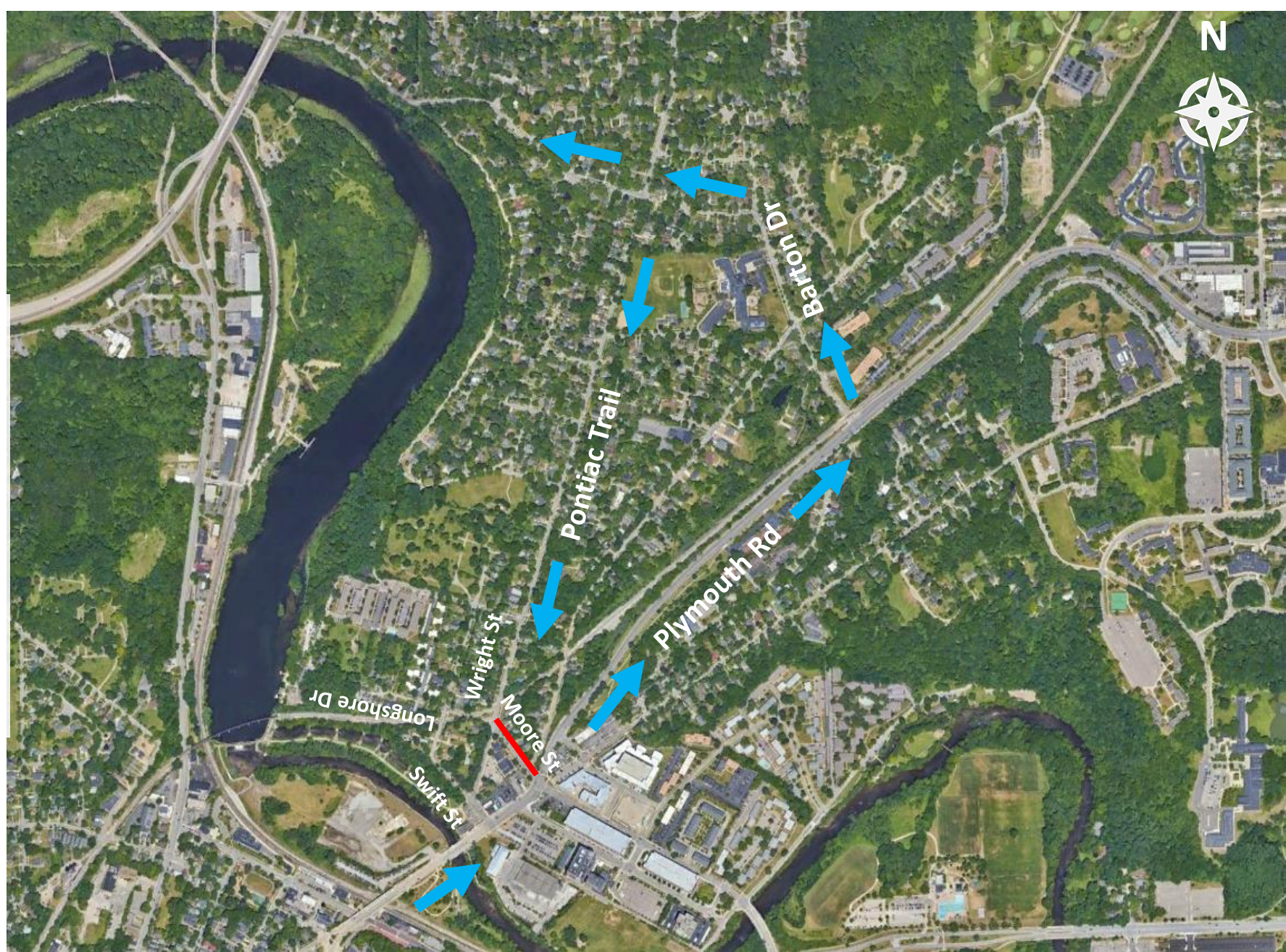
Detour Route – Stage 1

Full closure on Moore St between Plymouth Rd and Pontiac Trail. Maintain access to local businesses/residents.

NB Moore St one-way traffic to be detoured to Plymouth Rd to Barton Dr to Pontiac Trail.

 Work Zone

 Moore St Traffic





Swift St / Pontiac Trl Construction:

Detour Route – Stage 2

Full closure on Swift St / Pontiac Trl
between Plymouth Rd and Moore St.
Maintain access to local
businesses/residents.

WB Pontiac Trl / SB Swift St one-way
traffic to be detoured to Pontiac Trl to
Barton Dr to Plymouth Rd.

 Work Zone

 Swift St / Pontiac Trl Traffic








Swift St / Wright St Construction:

Detour Route – Stage 3

Full closure on Swift St / Wright St between Longshore Dr and Pontiac Trl, and Wright St north of Kellogg St. Maintain access to local businesses/residents.

Two-way traffic to be detoured to portions of Swift St, Moore St, and Pontiac Trl completed in Stages 1 & 2.

-  Work Zone
-  NB Swift St / Wright St Traffic
-  SB Swift St / Wright St Traffic





Possible Impacts to Property Owners and Residents

- Temporary loss of water service as leads are switched between watermains;
- Temporary work on private property (temporary grading easements);
- Portions of residential drive approaches will be disturbed and replaced in equal or better condition as necessary to complete the work;

The project team will make efforts to avoid property impacts and will coordinate directly with specifically impacted property owners to ensure there is an understanding of the project scope.



During Construction (Spring/Summer 2023)

- Construction is planned to occur in Spring/Summer 2023, and the anticipated duration is approximately 3-4 months;
- Dust, noise, some vibrations, and inconvenience will be prevalent due to the nature of the planned construction;
- Access to driveways may be temporarily disrupted. Notifications will be given to residents before such disruptions.

Throughout the project construction, the project team will work to minimize disruptions to surrounding properties and will provide advanced notice for any disruptions that may need to occur, with estimated timeframes for such disruptions.



Project Timeline

- **PUBLIC ENGAGEMENT:** October 2022 – December 2022
- **DESIGN:** September 2022 – February 2023
- **BIDDING:** February/March 2023
- **CONSTRUCTION:** May 2023 – September 2023

 | **Questions**



Questions

- What are your concerns? What is important to you?
- Are there other issues you would like to see us consider?
- Is there anything specific about your property that you'd like us to know?
- Is there anything specific you'd like us to know about your preferences regarding:
 - Crosswalks?
 - Bicycle Infrastructure?



Next Steps

An update will be provided on final construction plans and construction coordination via webpage and email notifications.

Walk-n-talks & meetings with interested residents, owners, stakeholders.

- Contact Chris Wall, P.E. with any questions or comments:
E-mail: cwall@a2gov.org
Phone: (734) 947-2607



Thank You!

Public Engagement Meeting No. 2 – Design Updates
November 29, 2022

City of Ann Arbor – Public Services Area – Engineering