

Barton Drive Resurfacing and Water Main Replacement Project

THURSDAY, SEPT. 19, 2019

6:30 P.M. – 8:30 P.M.

NORTHSIDE STEAM K-8 MULTIPURPOSE ROOM



Agenda

- I. Welcome, Introductions, & Meeting Purpose (10 min)
- II. Project Overview (10 min)
- III. Proposed Alternative Transportation Improvements (15 min)
- IV. Breakout Session & Feedback (40 min)
- V. Construction Impacts (10 min)
- VI. Open Discussion, Q&A (35 min)

Discussion Guidelines

- Be recognized to talk.
- Speak loudly and clearly so everyone can hear.
- One speaker and one point at a time.
- Allow everyone a chance to speak before a repeat speaker.
- Be respectful of other ideas and perspectives.

What's **not** on tonight's agenda?

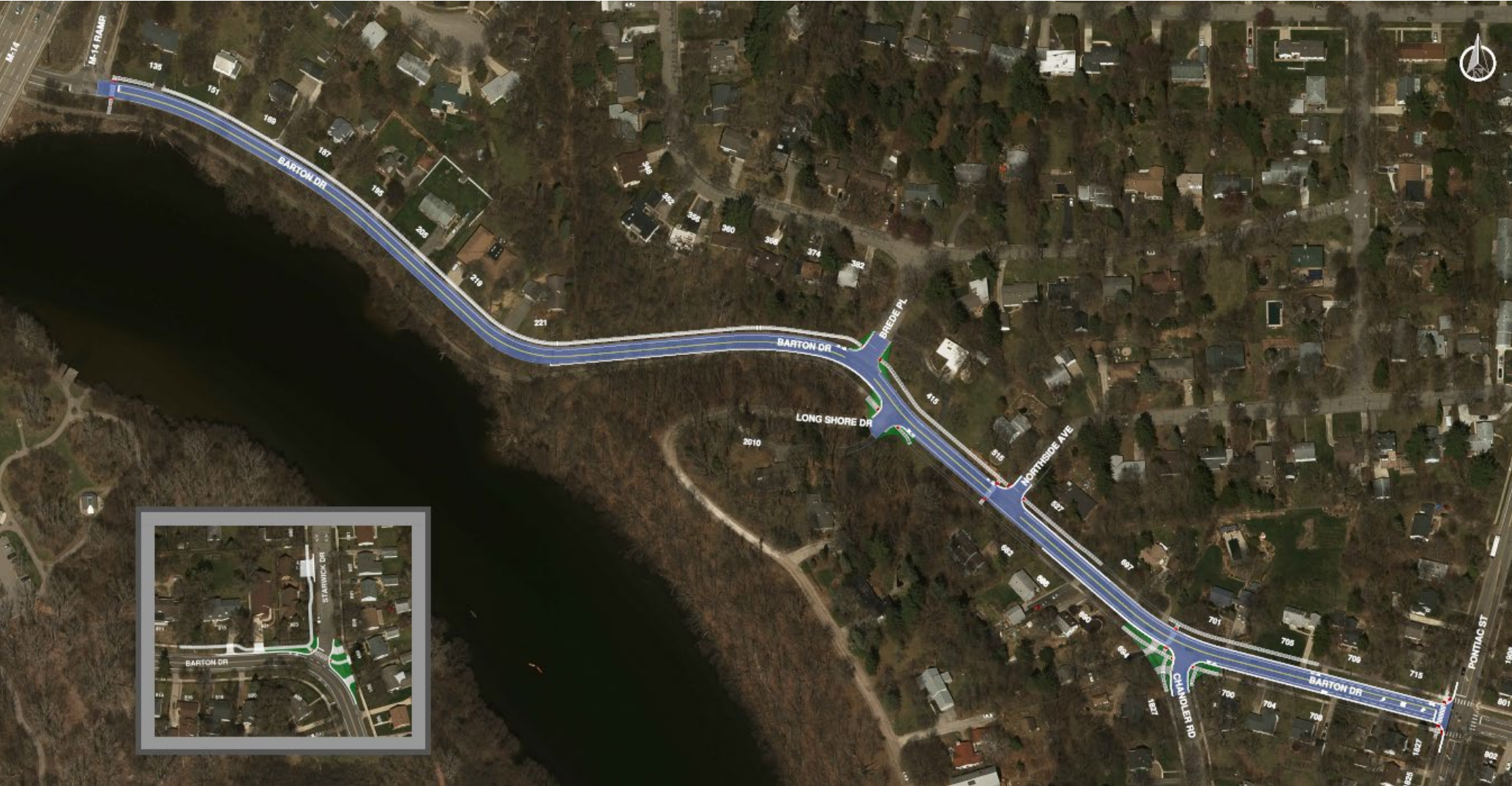
- Traffic Calming on adjacent local streets; Northside Phase 2
 - This is a separate program. Contact TrafficCalming@a2gov.org for more information.
- Tree Inventory and topography
 - To be addressed at the November 2019 meeting.
- Snow Removal "matching" with service organizations on SeeClickFix
 - A2 Fix It is specifically for reporting problems that the city can fix.
- Special Assessment details
 - New Sidewalk Special Assessments will be discussed at the Administrative Hearing anticipated for November 2019. More details coming soon!

Administrative Hearing Topics

- What is a special assessment
- The special assessment process
- The estimated costs
 - Front Lot – 100%
 - Side Lots – 50%
 - Back Lots – No Cost

PROJECT OVERVIEW

- Barton Drive, M14 Ramp to Pontiac Street
- Baron Drive / Starwick Drive Intersection



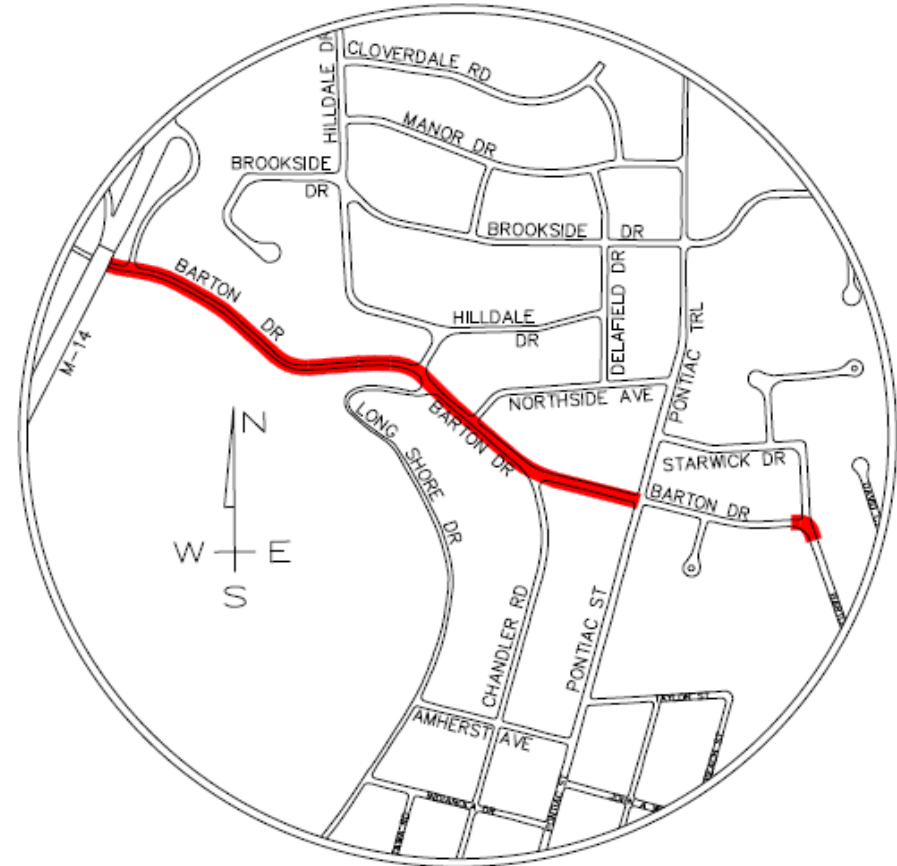
PROJECT OVERVIEW

Primary Project Elements

- Water Main Replacement
- Road Resurfacing
- Chandler Intersection Alterations
- New Curb & Gutter for Drainage

Other Considerations

- Other Intersection Alterations
- New Sidewalks
- New Crosswalks
- New Bike Lanes



Why replace water mains?

- Update aging infrastructure to current standards
- Reduce maintenance costs
- Increase capacity of existing undersized pipe
- Improve fire hydrant coverage

Water Main Replacement



Source: <http://sharonwater.com/update-on-water-main-replacements/>



Source: <https://www.epsrc.ac.uk/newsevents/casestudies/pipedreamswater/>

The existing 4 inch water main from Northside Avenue to Pontiac Trail will be replaced with an 8 inch water main to increase capacity.

Why resurface roads?

- Extend the lifespan of the existing road
- Create a smooth riding experience
- Reduce maintenance costs
- Improve stormwater management

Existing Road Condition



Existing Road Condition



No Curb



Barton Drive / Starwick Drive Intersection

Proposed Road Condition Asphalt Resurfacing



THIS IS NOT A FULL ROAD RECONSTRUCTION PROJECT

Reconstruction

- New Subbase, New Base, New Profile, New Alignment

Resurfacing

- Works within the existing road footprint
- Replace existing pavement
- Preserves existing subbase
- Replace curb, ramps, and drive approaches as needed

Improvements to Pedestrian Spaces



To ensure American with Disabilities Act (ADA) compliance, some curb, sidewalk and ramps will be replaced during construction.

Why improve intersections?

- Improve safety
- Improve visibility
- Reduce speeds
- Reduce paved surface area

Barton and Chandler



Barton and Starwick



Barton and Pontiac



Barton and Brede & Barton and Longshore



Barton and Northside

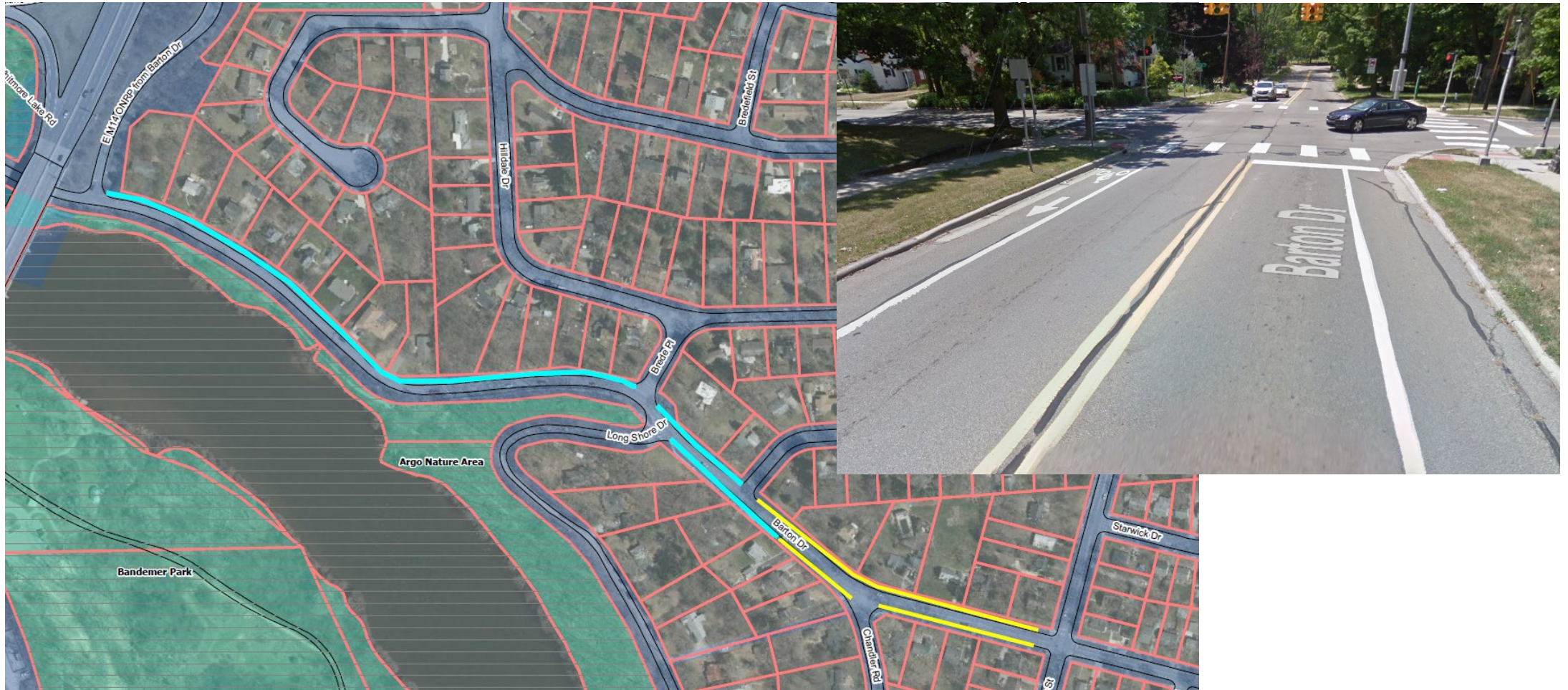


Why install bike lanes?

- Improve safety
- Provide a continuous user experience
- Encourage active transportation and improve community health
- Provide more transportation options

New and Proposed Bike Lanes



-  New Bike Lane
-  Proposed Bike Lane (loss of all or some on-street parking; match lane design east of Pontiac)



Why install sidewalks?

- Improve safety
- Provide a continuous user experience
- Encourage active transportation and improve community health
- Provide more transportation options

Existing Sidewalk System

-  Gap in the sidewalk system
-  Sidewalk currently exists



Proposed Sidewalk Construction

Zone 1

- Capital Improvement Plan
- Sidewalk Prioritization Rating – Mid/High

Zone 2

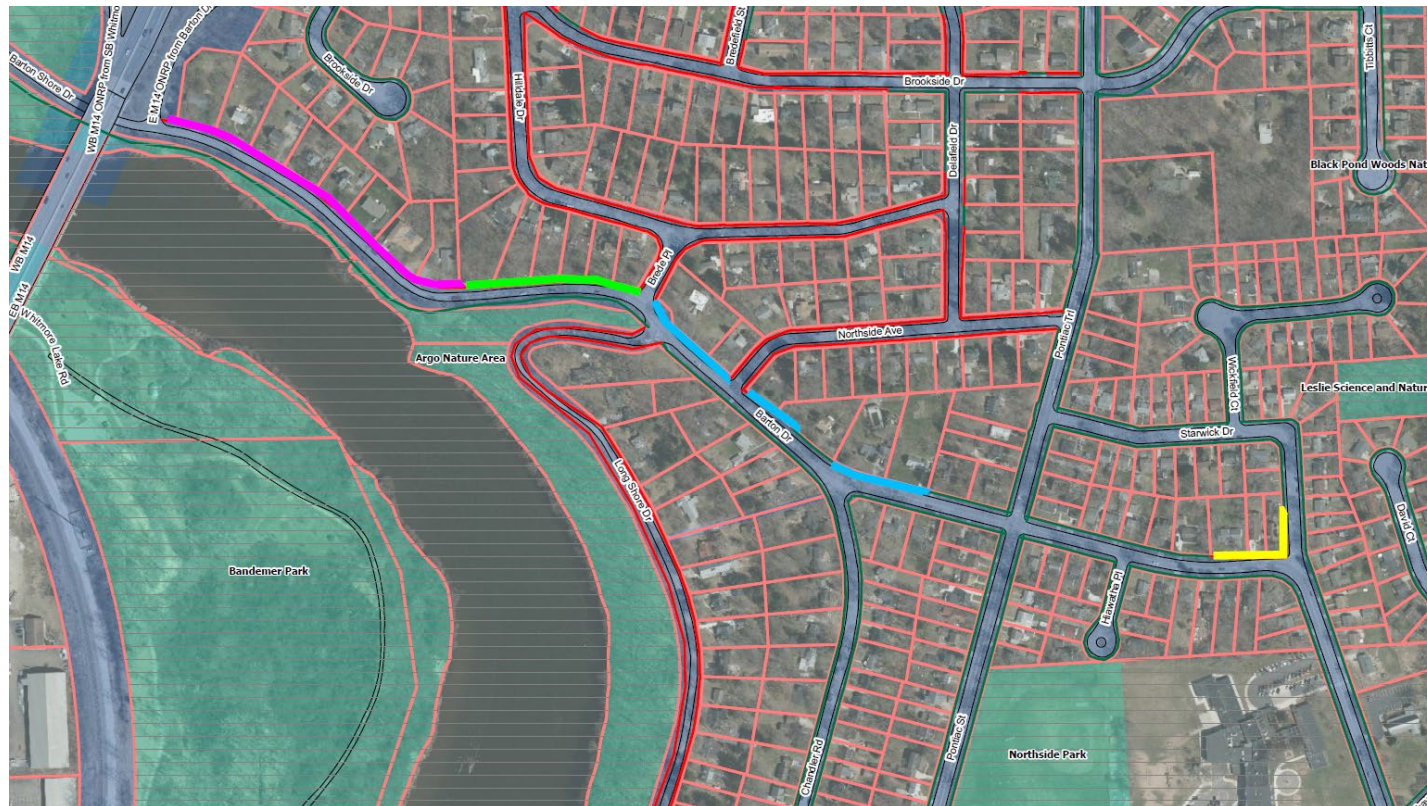
- Petition

Zone 3

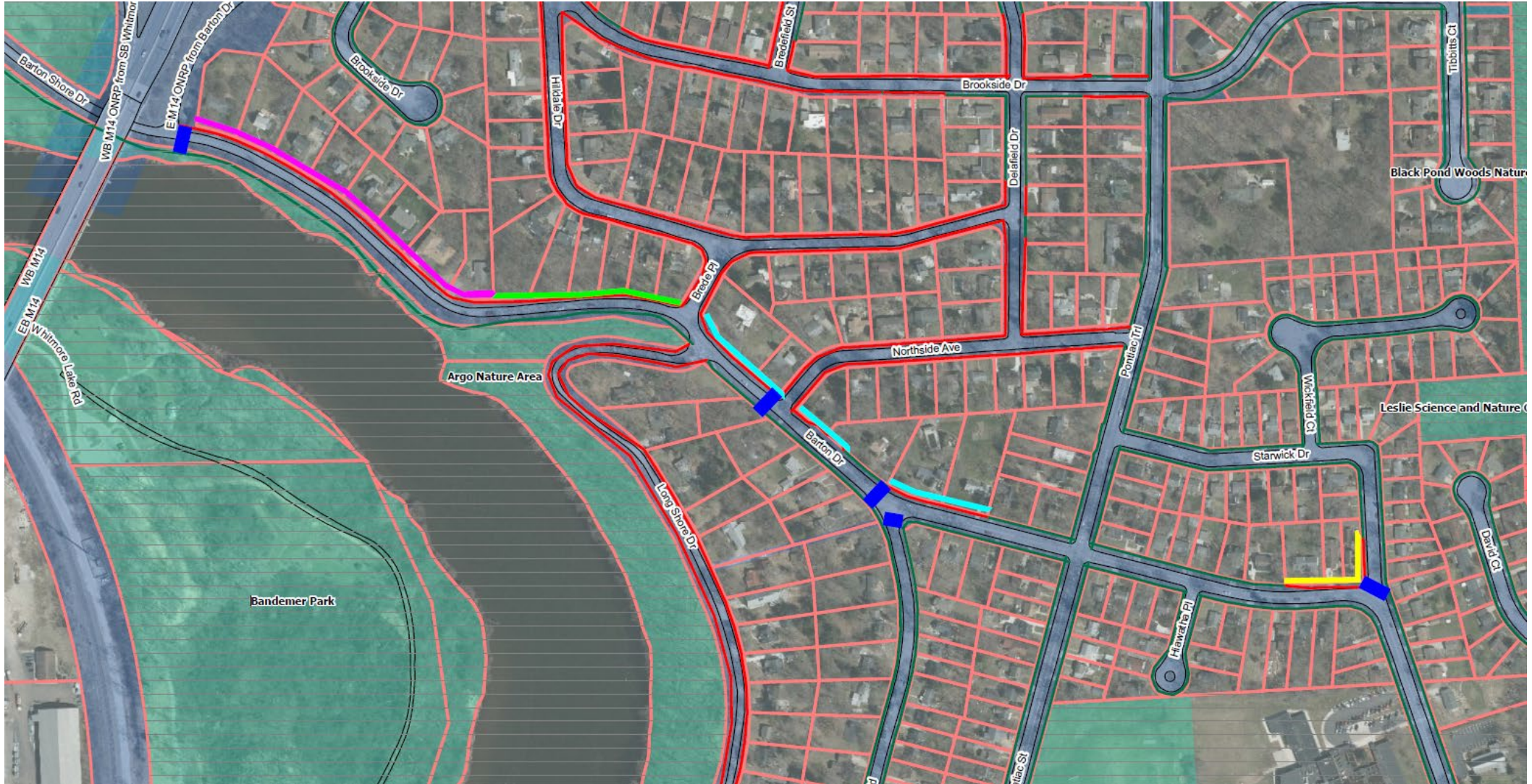
- Safe Routes to School (SRTS) Intersection Request
- With Intersection Reconfiguration

Zone 4

- Only if Zone 2 Installed
- Only if Technically Feasible



Proposed Crosswalk Locations ■



Proposed Crosswalk Locations

Uncontrolled Design Options: Standard+
Minor & Major Arterials ≤ 3 Lanes

Pedestrian Warning Series (W11-2) or School Warning Series (S1-1)
Bright Sides
In-Lane Signs (R1-6a)
Pedestrian Islands
R1-6a Signs on Island
Bump Outs
Stop Here for Ped. (R1-5b) Signs w/ Stop Bar on Multilane Approach



Pedestrian Warning Sign



Stop Here for Pedestrians



In-Lane Sign

BREAKOUT SESSION

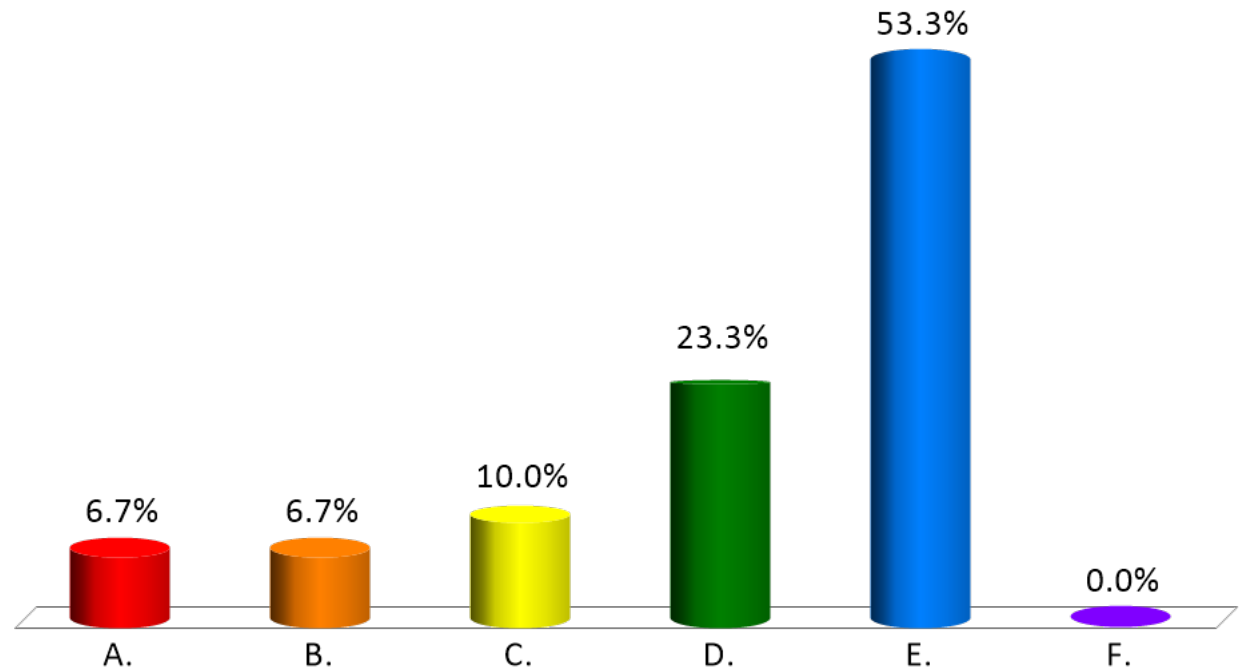
- How do you currently use Barton Drive?
- How would you like to use Barton Drive
- How do you see others using Barton Drive?
- How important is it to make road changes along Barton Drive for people walking/biking?
- How important is it to make road changes along Barton Drive for people driving?
- What part of this project are you most interested in?



Q1: Do you live or own property near the project area (Barton Drive from M-14 to Pontiac)?

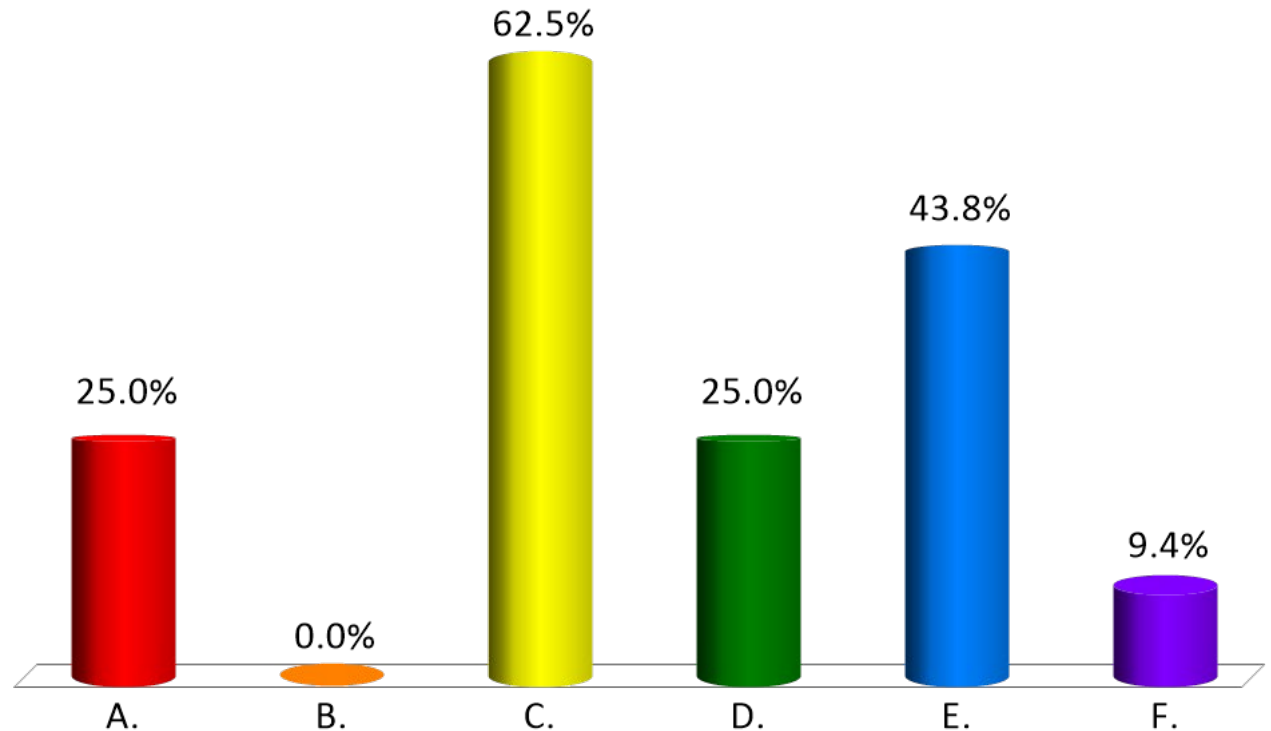
30 participants

- A. Yes, along sidewalk gap Zone 1 - Brede to Pontiac
- B. Yes, along sidewalk gap Zone 2 – M-14 to 221 Barton
- C. Yes, along sidewalk gap Zone 3 – Barton/Starwick
- D. Yes, along sidewalk Gap Zone 4 – 221 Barton to Brede
- E. Yes, in the surrounding neighborhood
- F. No, outside the Project Area



Q2: What part of this project are you most interested in? (select up to two)

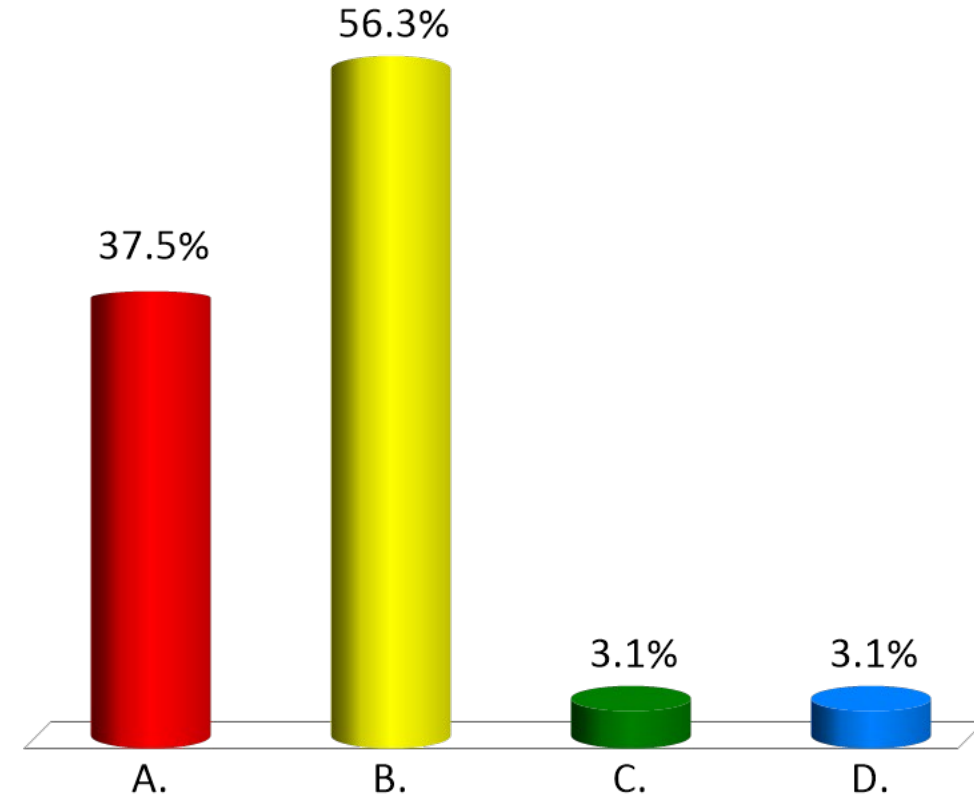
- A. Impacts caused by construction
- B. Water Service Improvements
- C. Active Transportation Features (Bike Lanes, Sidewalks, Crosswalks)
- D. Financial impacts to property owners (i.e., Special Assessments)
- E. Intersection Changes
- F. Other



Q3: What is your preference for the proposed bike lane(s) on Barton Drive between Brede and Pontiac?

32 participants

- A. No bike lanes; maintain on-street parking on both sides
- B. Install bike lanes on both sides, remove on-street parking
- C. Install westbound (toward M-14) bike lane only, maintain parking on eastbound side
- D. Install eastbound (toward Plymouth Road) bike lane only, maintain parking on westbound side

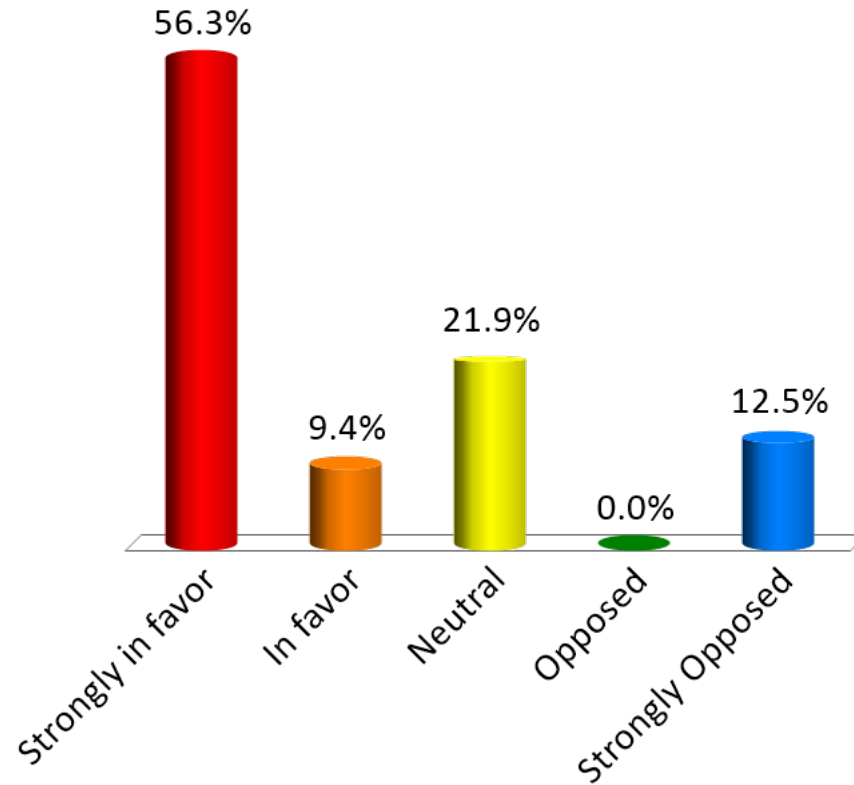


Q4: Please indicate your attitude toward installing sidewalk at each of the proposed sidewalk zones.

Zone 1: Brede to Pontiac

32 participants

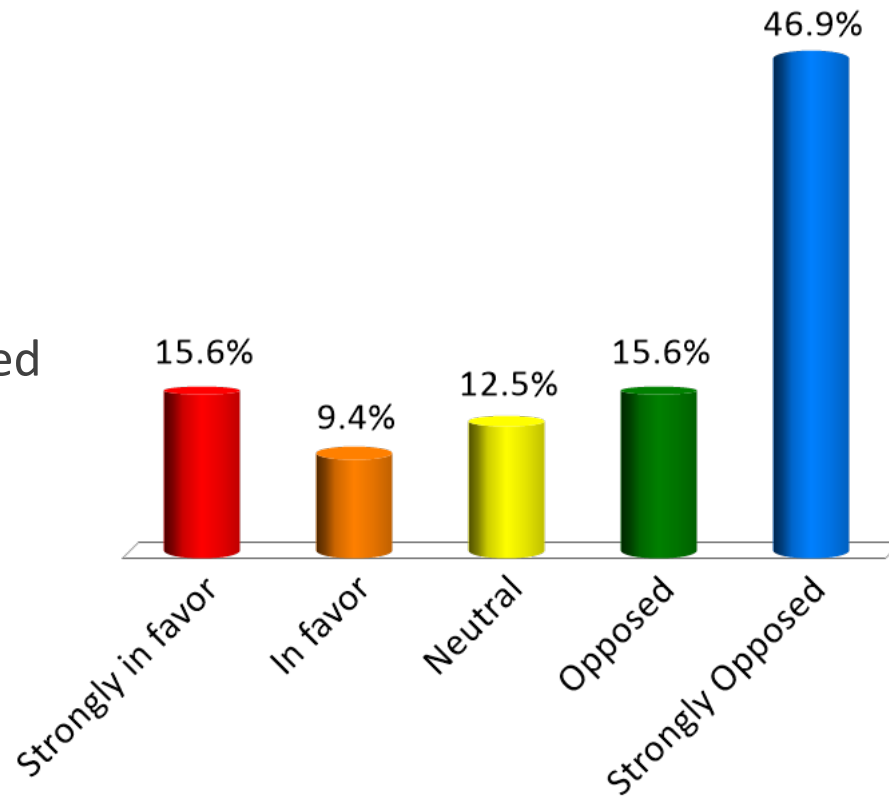
- A. Strongly in favor
- B. In favor
- C. Neutral
- D. Opposed
- E. Strongly Opposed



Zone 2: M-14 to 221 Barton

32 participants

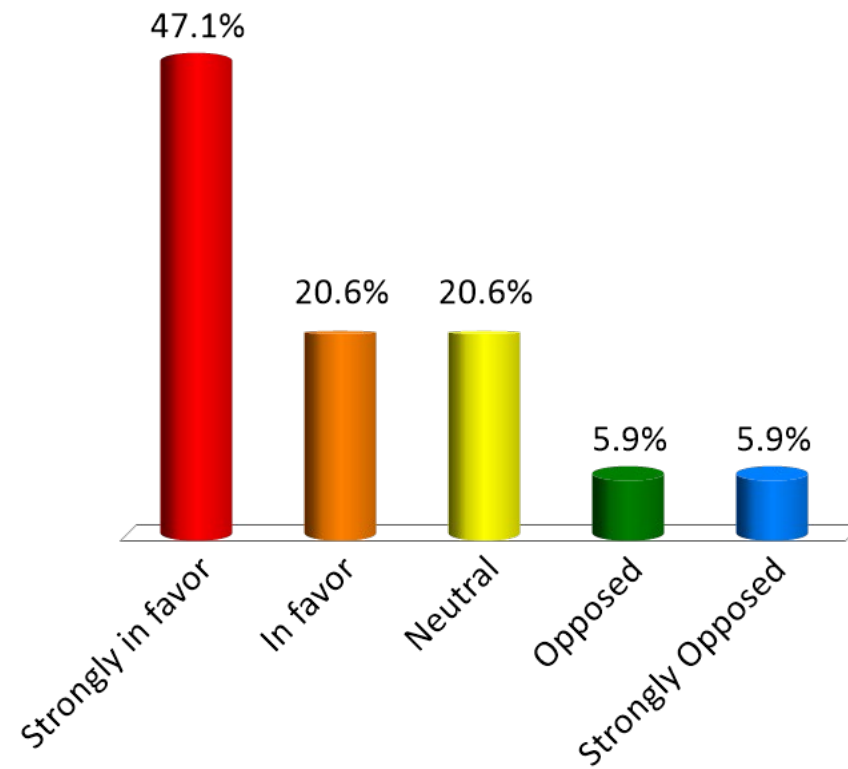
- A. Strongly in favor
- B. In favor
- C. Neutral
- D. Opposed
- E. Strongly Opposed



Zone 3: Barton & Starwick

34 participants

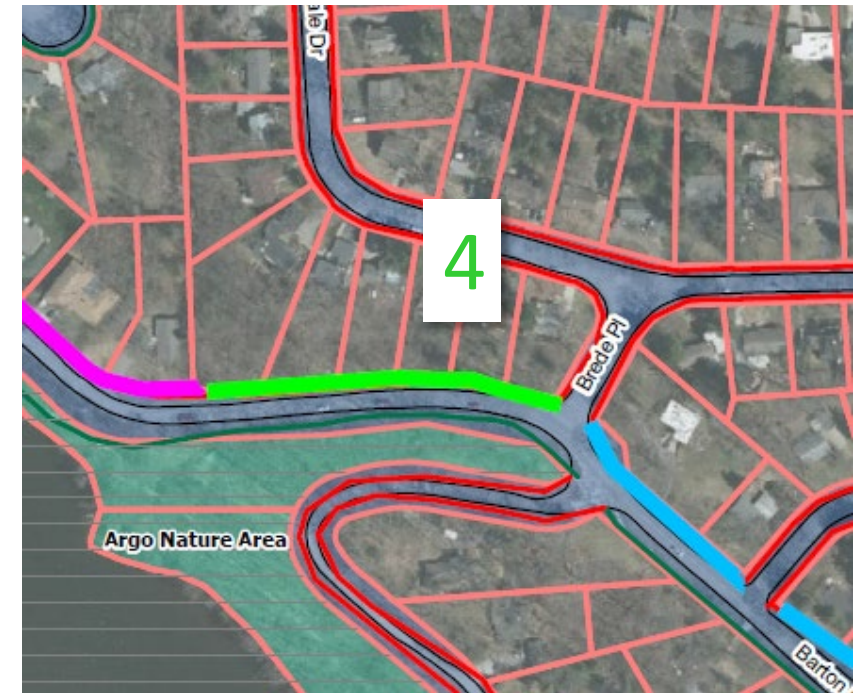
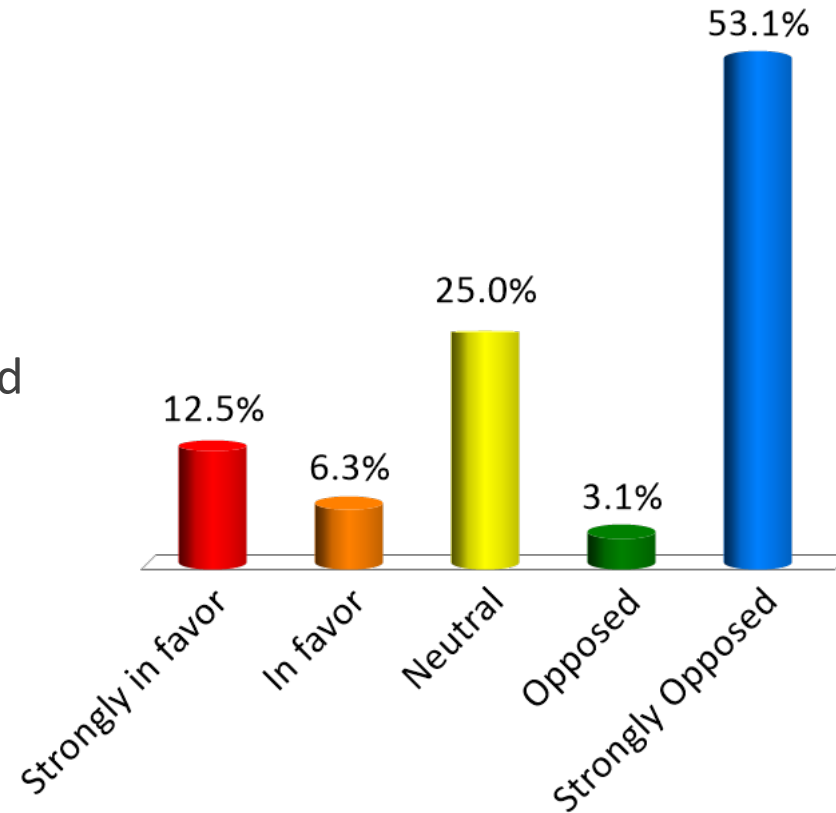
- A. Strongly in favor
- B. In favor
- C. Neutral
- D. Opposed
- E. Strongly Opposed



Zone 4: 221 Barton to Brede

32 participants

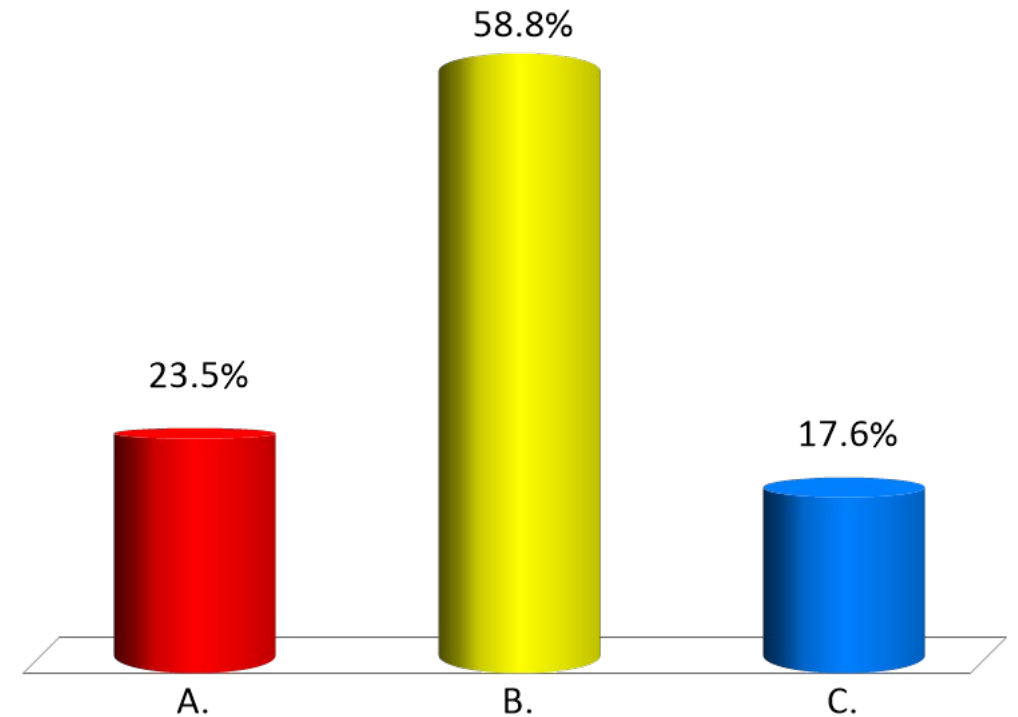
- A. Strongly in favor
- B. In favor
- C. Neutral
- D. Opposed
- E. Strongly Opposed



Q5: What is your preference at the Pontiac and Barton intersection?

34 participants

- A. Maintain current configuration
- B. Install designated left-hand turn lane on Barton going eastbound (toward Plymouth Road)
- C. Neither



FEEDBACK OPPORTUNITIES

- Survey available on Open City Hall
- Accepting submissions until October 3, 2019
- Results on Project Website

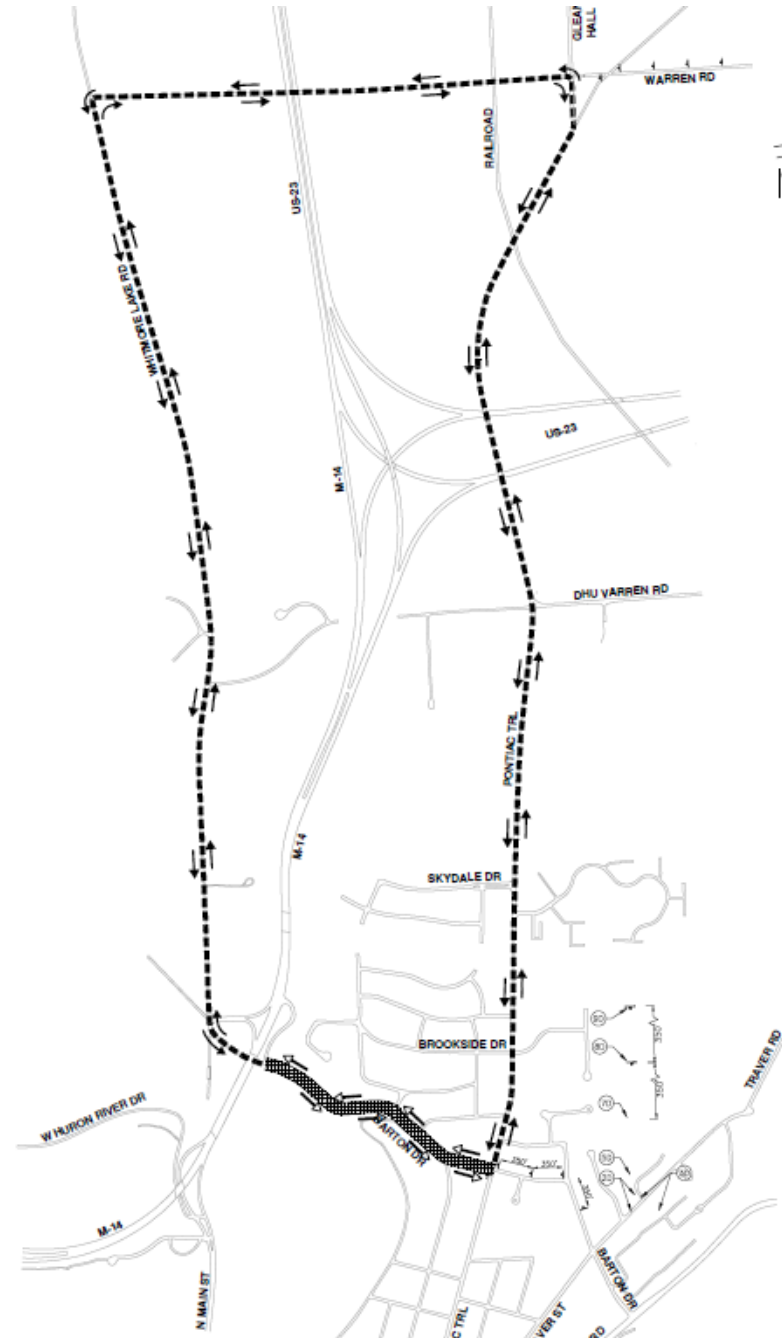
CONSTRUCTION IMPACTS



Detour

Westbound: Barton Drive to Whitmore Lake Road to Warren Road to Pontiac Trail

Eastbound: Barton Drive to Pontiac Trail to Warren Road to Whitmore Lake Drive



Driveway and Street Access

Access and services will be maintained

- Driveways*
- Emergency vehicles
- Mail
- Trash
- Recycling
- Restricted on-street parking

* Some exceptions



Other Construction Impacts

- Water service will be maintained*
- Curb replacements cause disruption behind the curbs
- Construction will generate dust and noise.

* Some exceptions

Anticipated Project Schedule



- January - February 2020 – Select Construction Contractor
- April 15, 2020 – City Council Resolution to award the construction contract
- April 16, 2020 – Start construction
 - Water Main Replacement
 - Concrete Work
 - Road Resurfacing & Restoration
- October 31, 2020 – Project Completion

Working hours – 7:00am to 8:00pm Monday-Saturday

Next Steps

- Special Assessment Administrative Hearing
- Project Website
 - www.a2gov.org/BartonDrive
- Construction Impacts Update
- Construction Notification Postcard
- Project Updates
 - Email Distribution List

DISCUSSION



QUESTIONS?

Contact Jane K Allen, Project Manager
jallen2@a2gov.org
or call 734-794-6410 ext. 43678