

City of Ann Arbor Snyder/Edgewood Avenues Stormwater Improvement Project



Public Meeting #4 Summary

November 6, 2019 – 7:00 pm to 9:00 pm

1. Participant List – Attachment #1

2. Welcome and Introductions

- a. Mike Nearing, Senior Project Manager, City of Ann Arbor - Engineering introduced the Project Team: Andy Kilpatrick, Project Lead, Fishbeck; Jay Zawacki, Hydraulic Modeling Lead, CDM Smith; Teresa Newman, Public Involvement Lead, Project Innovations.

3. Recap of Project to Date

- a. 10/2018 – City launched the project to identify options to manage stormwater to reduce flooding – storage, conveyance, infiltration.
- b. 11/29/18 – Public Meeting held to introduce project objectives.
- c. 2/28/19 – Public Meeting held to review and rank 10 potential solutions.
- d. 5/1/19 – Public Meeting held to review final four alternatives.

4. Overview of Project Objectives

- a. Identify options to manage stormwater to reduce flooding – storage, conveyance, infiltration.
- b. Use stormwater model to analyze impacts on flows and water levels.
- c. Design target is to keep peak hydraulic grade line (HGL) one foot below ground level.
- d. Volume requirements vary by location. They are in the range of 110,000 – 160,000 cubic feet (ft³) of storage for the 10-year, 12-hour storm standard.
- e. CIP includes estimated construction budget of about \$1.5M.

5. Overview of Four Final Alternatives

4 Final Alternatives

Alternative	Description	Capacity
Pioneer Basin	Improved Conveyance from Edgewood/Snyder. Storage located under soccer field, west of existing stormwater infiltration basin.	122,000 CF
Snyder ROW (Deeper Birk)	Expanded Franklin-Snyder storage w/utility relocate and deeper basin while accommodating large trees.	159,600 CF
Snyder ROW (Deeper Edgewood)	Underground storage along Snyder spread across 4 basins.	156,900 CF
Snyder + Stadium Storage	Underground storage along Snyder and W. Stadium. Two phases of construction.	111,300 CF

City of Ann Arbor Snyder/Edgewood Avenues Stormwater Improvement Project



Public Meeting #4 Summary

November 6, 2019 – 7:00 pm to 9:00 pm

a. General Construction Impacts for All Alternatives

- i. Affected streets to be reconstructed
- ii. On street parking will be prohibited
- iii. Driveways temporarily inaccessible
- iv. Sidewalks temporarily inaccessible
- v. Private utility relocation required
- vi. Street trees will likely be removed in construction areas
- vii. Road closure
- viii. Water shut-off up to 8 hours for water main relocation
- ix. Questions:

1. Q: Will off-site parking be arranged for the residents? A: There will be arrangements made for off-site parking within a reasonable distance of residential property.

b. Pioneer Basin was chosen as the best solution of the four alternatives.

(the costs shown in the diagram below are ONLY construction costs, not total project costs)

Alternative	Description	Cost Projection	Flooding Addressed Yes / No	Estimated Construction Timing
<i>Pioneer Basin</i>	<i>Improved conveyance out of Edgewood-Snyder</i>	<i>\$ 2.9M</i>	<i>YES</i>	<i>Edgewood – 2-3 months Stadium – 0.5-1 months Pioneer – 3-4 months (Actual duration of work will be impacted by U of M Football and other sporting events)</i>
Snyder ROW Storage - Deeper Birk	Expanded storage at Franklin-Snyder with utility relocation and deeper basin	\$ 4.85M	NO	Franklin/Snyder – Birk to 7 th – 3 months Snyder/Edgewood – 2 months Franklin – 7 th to Hutchins – 2-3 months
Snyder ROW Storage – Deeper Edgewood	Underground storage along Snyder Avenue; deeper storage spread across 4 basins	\$ 4.5M	YES	Franklin/Snyder – Birk to 7 th – 3 months Snyder/Edgewood Intersection to Stadium – 2-3 months Stadium – 0.5-1 months Pioneer High School – 1-1.5 months
Snyder + Stadium Storage	Underground storage along Snyder Ave. and W. Stadium Blvd.	\$ 5.3M	Phase 1: NO Phase 2: YES	Construction in 2 Phases Franklin/Snyder – Birk to 7 th – 3 months Snyder/Edgewood Intersection to Stadium – 3 months Stadium Blvd and Pioneer HS occur during W. Stadium reconstruction.

City of Ann Arbor Snyder/Edgewood Avenues Stormwater Improvement Project

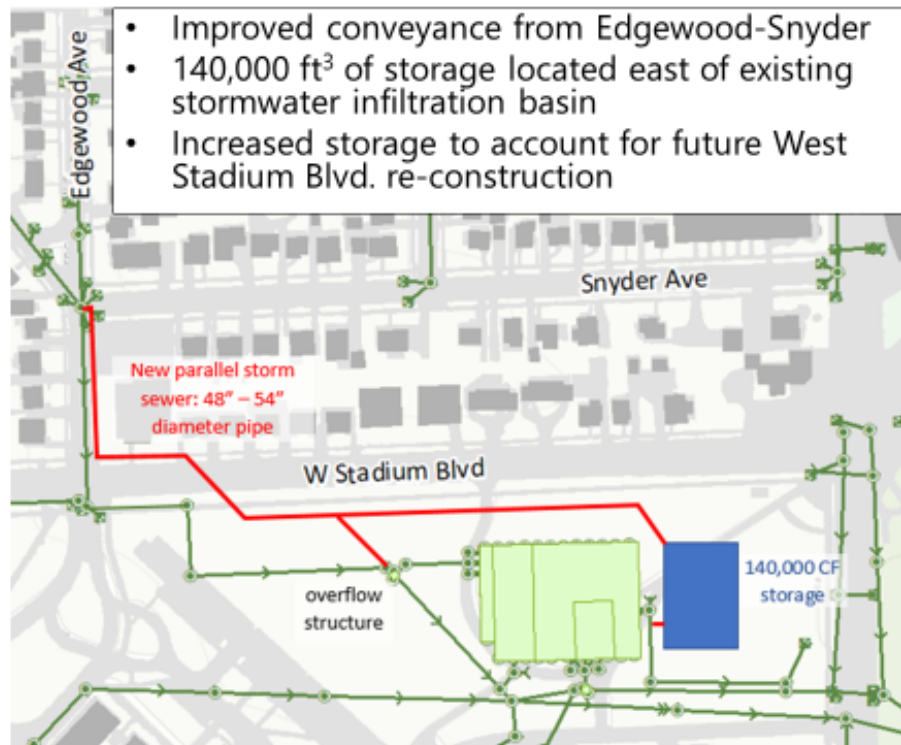


Public Meeting #4 Summary

November 6, 2019 – 7:00 pm to 9:00 pm

- 6. Pioneer Basin Alternative
 - a. Design Capacity of Pioneer Basin

Pioneer Basin Alternative



City of Ann Arbor Snyder/Edgewood Avenues Stormwater Improvement Project



Public Meeting #4 Summary

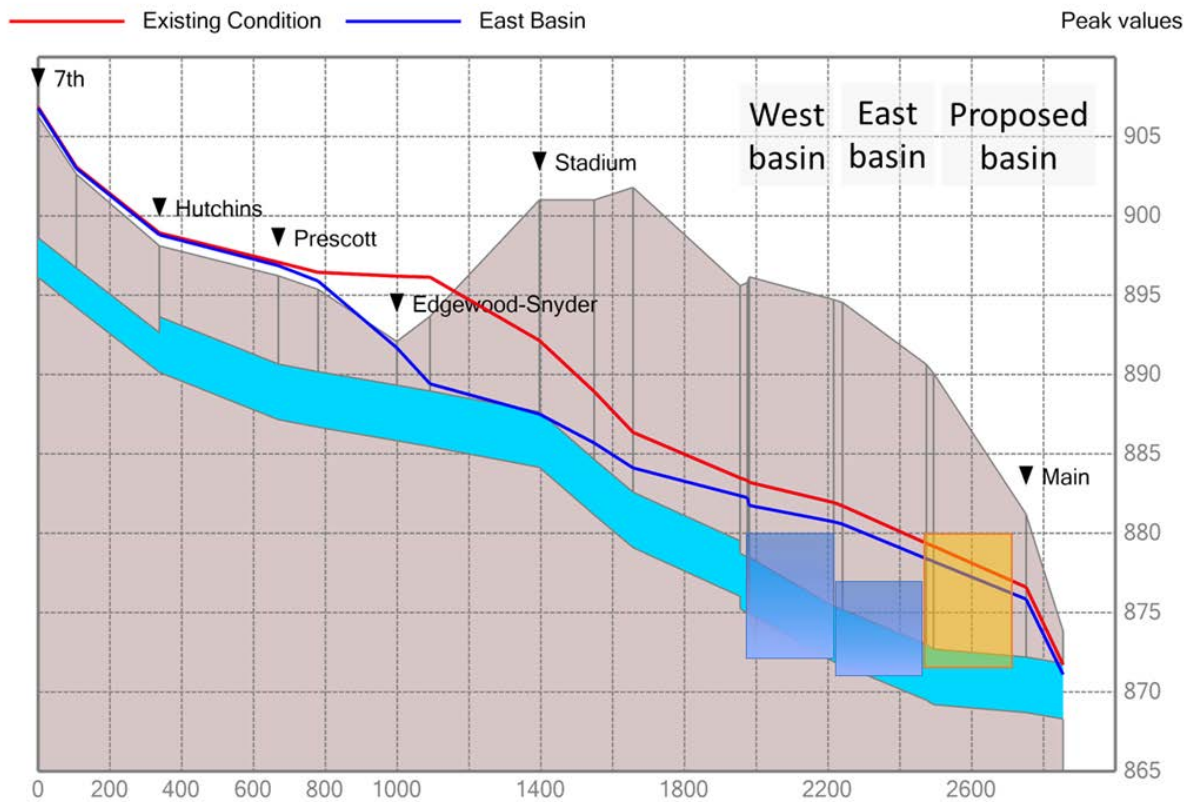
November 6, 2019 – 7:00 pm to 9:00 pm

b. Pioneer Basin Profile View

- i. Overland flow down Snyder Ave (west of Edgewood) is not addressed by storage south of Stadium
- ii. Ponding addressed for 10-year storm at Edgewood

Peak HGL 10-Year 12-Hour Storm

Left: 7th St; Right: S Main St





Public Meeting #4 Summary

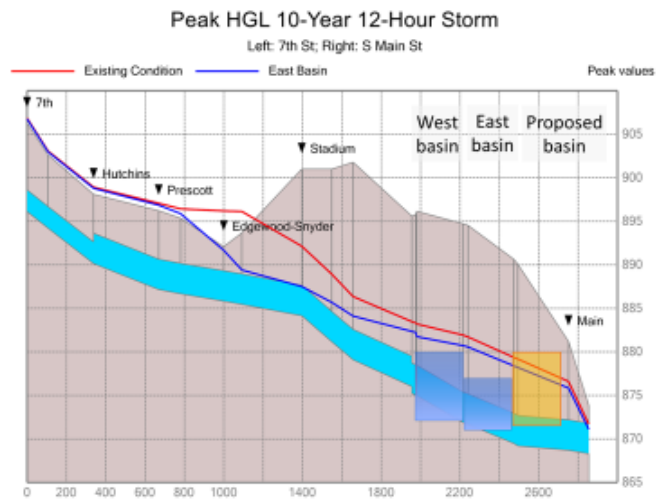
November 6, 2019 – 7:00 pm to 9:00 pm

c. Pioneer Basin Impacts at Snyder/Edgewood intersection to W. Stadium Blvd.

Pioneer Basin Impacts

Snyder/Edgewood from intersection to Stadium (2-3 months)

- 13 parcels within construction limits.
- Edgewood closed from Stadium through Snyder intersection. Snyder closed from west of Edgewood through the same intersection.
- Large/deep storm sewer construction.



d. Pioneer Basin Impacts at W. Stadium Blvd and Pioneer High School

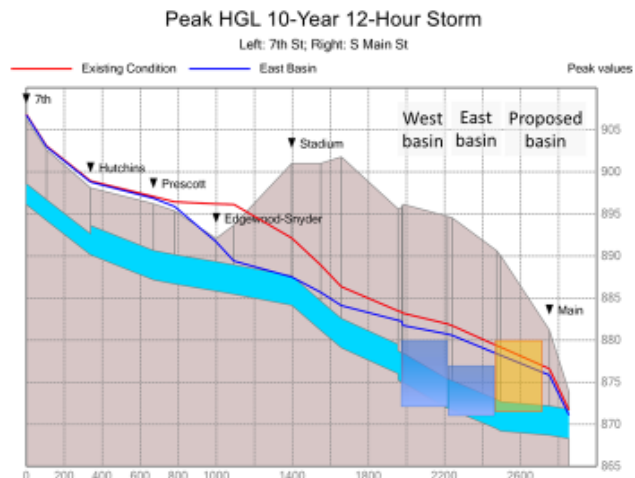
Pioneer Basin Impacts

Stadium Blvd (0.5-1 month)

- Large storm sewer construction.
- Reduced lanes.

Pioneer High School (3-4 months)

- Most of the work will be in grass areas and won't impact the Pioneer HS traffic. Some parking spaces in teacher's lot may be closed.
- Timing related to High School operations and Football parking will need to be studied further.



City of Ann Arbor Snyder/Edgewood Avenues Stormwater Improvement Project



Public Meeting #4 Summary

November 6, 2019 – 7:00 pm to 9:00 pm

7. Next Steps

a. Timeline

- i. November 2019
 - 30% Preliminary Plan Submittal
- ii. 2020
 - Re-evaluate and re-prioritize all proposed City Storm Water Projects and budget requirements as part of upcoming CIP Process
 - Assuming favorable re-prioritization, move forward with project
 - Select Design Consultant; Initiate Final Design
 - Begin negotiations for easements and needed project accommodations with representatives of the Ann Arbor Public Schools
- iii. 2021
 - Construction expected to begin – assuming a favorable re-prioritization and ranking of City storm water projects and budget availability

b. Project Updates

- i. Updates will be provided on the project web page: www.a2gov.org/sesip

8. Q/A and Discussion

- a. Q: Will the raw water main project be incorporated into this project? A: That water main project will be part of the continuation of the W. Stadium Blvd. project. The new storm sewer pipe will be significantly below the new raw water main such that it will not interfere with the future improvements.
- b. Q: Wasn't the new basin originally proposed to be west of the existing basins? A: Yes, however, Ann Arbor Public Schools view that area to potentially be used for future building projects and requested us to find an alternative area.
- c. Q: Can the project be split between fiscal years? A: Yes, this is planned to be done in order to spread the project's cost over multiple fiscal years.
- d. Q: What water mains will be moved? A: The water mains (ranging from 1-3" diameter) along Edgewood will be upsized, relocated, and then re-connected to the existing water main.
- e. Q: Is the sanitary sewer affected? A: At this level of planning there aren't any anticipated affects to the sanitary lines because of the depth of the sewer leads.

City of Ann Arbor Snyder/Edgewood Avenues Stormwater Improvement Project



Public Meeting #4 Summary

November 6, 2019 – 7:00 pm to 9:00 pm

ATTACHMENT #1 – Participant List

Snyder/Edgewood Avenues Area Stormwater Improvement Project

Public Meeting #4 – Pioneer High School Cafeteria Annex

November 6, 2019

NAME	ADDRESS	AFFILIATION OR ORGANIZATION	EMAIL ADDRESS	PHONE
Rory Baker	1305 Edgewood	Resident		
David Ferguson	1301 Prescott	Resident	dhferguson@comcast.net	734-761-2379
Diane Ferguson	1301 Prescott	Resident	dsferguson@comcast.net	734-761-2379
Andrew Kilpatrick		Fishbeck	akilpatrick@fishbeck.com	734-454-7566
Laura King-Moore	1304 Edgewood	Resident		
Carol Mohrlock	1306 Prescott	Resident		
Michael Nearing		City of Ann Arbor	mnearing@a2gov.org	734-794-6410 x43635
Teresa Newman		Project Innovations	teresa@projectinnovations.com	248-310-3435
Harry Sheehan		Washtenaw County Water Resources Commission	sheehan@ewashtenaw.org	
Jay Zawacki		CDM Smith	ZawackiJR@cdmsmith.com	