



## Chapter 105 Housing Code

### Smoke, fire detection, and carbon monoxide detection devices (Sec 8:527)

The City of Ann Arbor has adopted an ordinance requiring Carbon Monoxide detection in rental housing. The information in this handout provides general guidelines for the installation requirements for smoke and carbon monoxide alarms per the **City of Ann Arbor Housing Code** in existing dwelling units. **New and altered buildings shall comply with the provisions of the applicable building code.** Carbon monoxide detection requirements take effect on **July 6, 2023**.

### Carbon Monoxide alarm requirements

- Where a dwelling contains a fuel-fired appliance or has an attached garage with a common door, **battery or hardwired** carbon monoxide alarms shall be installed in each dwelling unit in the following locations.
  - Outside of each sleeping area, in the immediate vicinity of sleeping rooms
  - On each level of the dwelling unit, including basements.
  - In other than one- and two-family dwellings, carbon monoxide detection shall comply with the 2015 International Fire Code. In buildings where fuel-fired appliances are outside of a dwelling unit, exceptions can be found for alternative locations. [https://codes.iccsafe.org/content/IFC2015/chapter-9-fire-protection-systems#IFC2015\\_Pt03\\_Ch09\\_Sec915](https://codes.iccsafe.org/content/IFC2015/chapter-9-fire-protection-systems#IFC2015_Pt03_Ch09_Sec915)
- Follow manufacturer instruction for recommended locations and locations to avoid such as proximity to heating or cooking appliances.
- CO alarms shall comply with UL 2034. Combination CO/smoke alarms shall comply with both UL 2034 and UL 217.

### Smoke alarm requirements

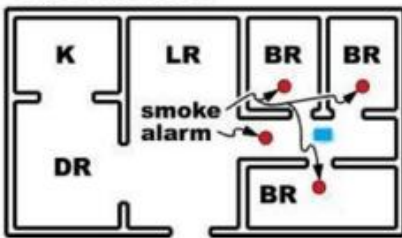
- All dwellings shall have **battery-powered or hard-wired** single station smoke alarms shall be installed in the following locations:
  - In all sleeping rooms.
  - Outside of each sleeping area, in the immediate vicinity of the sleeping rooms.
  - On each level of the dwelling unit, including basements.
  - *Exceptions:* Buildings with an approved fire alarm system
- Smoke alarms shall not be installed less than six feet horizontally from a permanently installed cooking appliance or less than three feet horizontally from the door or opening of a bathroom that contains a bathtub or shower.
- Smoke alarms shall be replaced not more than 10 years from the date of manufacture marked on the unit or shall be replaced if the date of manufacture cannot be determined.
- Where smoke detectors are hard wired or interconnected, they shall be maintained as such.
- Follow manufacturer instruction for recommended locations and locations to avoid such as proximity to heating or cooking appliances.
- Smoke alarms shall comply with UL 217.

**PLACE ONE SMOKE ALARM ON EVERY FLOOR AND SLEEPING ROOM**

**MULTI-STORY**



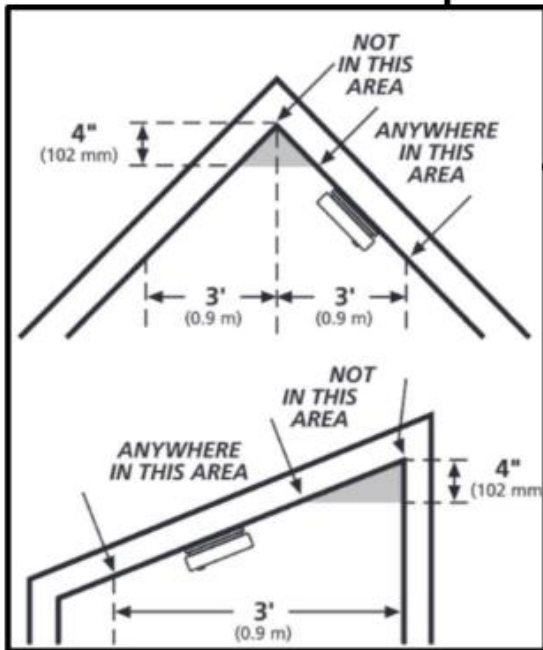
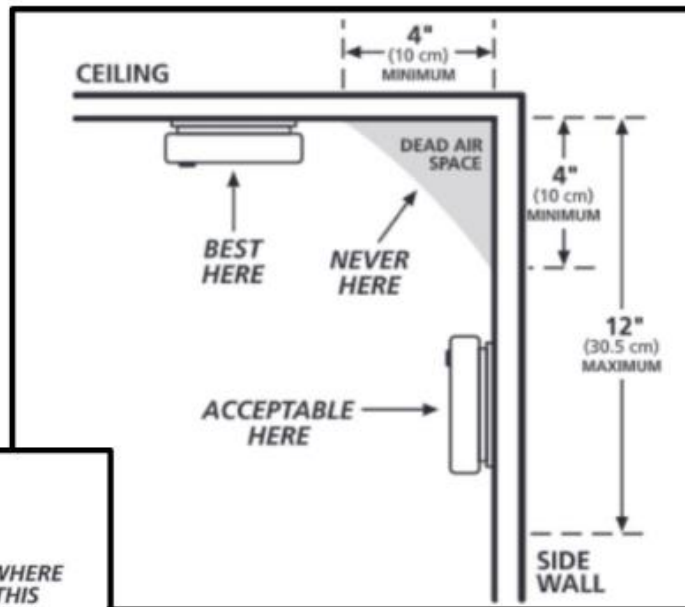
**SINGLE LEVEL**



**PLACE ONE CARBON MONOXIDE ALARM ON EVERY FLOOR AND NEAR ALL SLEEPING ROOMS**

Carbon Monoxide Detector

Smoke Detector



Alarms should be installed at a minimum distance of 3 feet from fans and vents

Follow manufacturer instructions for recommended locations and locations to avoid.