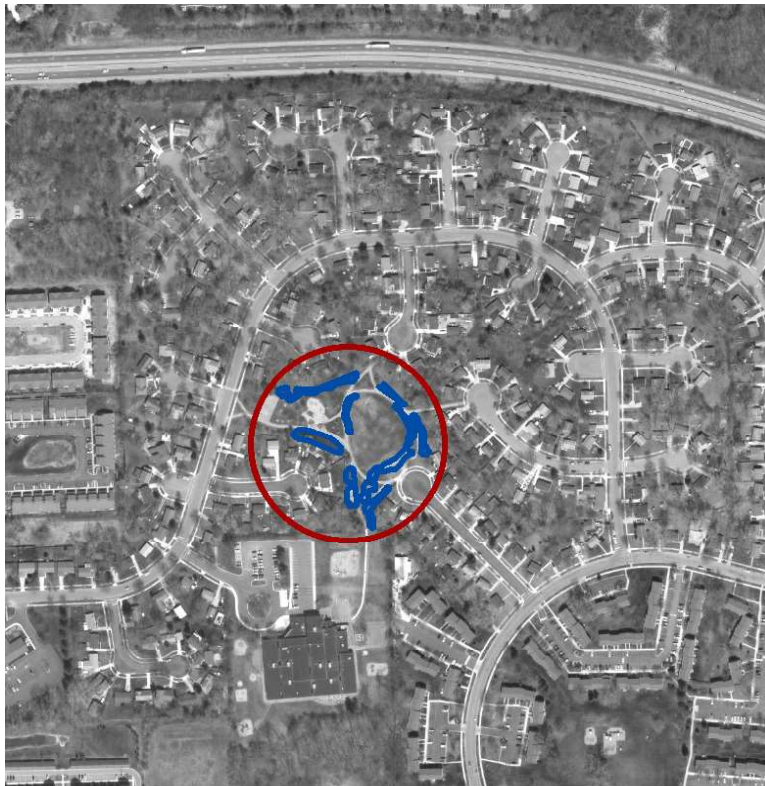
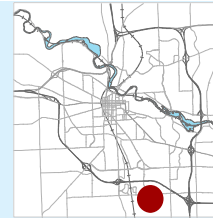


Arbor Oaks Park Rain Gardens

Approximate Address: Champagne Dr. and Stratton Ct.



Year Built: 2013-2014

Designer: InSite Design Studio, Inc.

Aesthetic Level Required: High

DESCRIPTION:

There are eight rain garden depressions, some connected by small culverts below walking paths. One additional rain garden unit formed naturally and needs to be planted with natives. The unit south of the pathway is dominated by cat-tails and has heavy clay soils. An underdrain was added but standing water is still common. Stormwater runoff comes from overland flow. This site was burned in '17.

MAINTENANCE NOTES:

Collect seeds from natives in fall. Invasives include Canada Thistle, Sow Thistle, Yellow Sweet Clover, Field Bindweed, Cat-tail and Purple Loosestrife. Cut standing dead, especially switchgrass in winter/early spring. Remove saplings.



June 2016

ACTIVITY	Monthly	Biannually	Annually	As Needed
Remove Trash	X			
Remove Invasives	X			
Remove Sediment				X
Controlled Burns				X
Herbicide				X
Add/Divide Plants			fall	
Collect Seeds			fall	

YEARLY ESTIMATE	HOURS	COST
Supervisor Labor	32	\$1,302
Volunteer Labor	90	\$1,800
Equipment		\$149
Controlled Burns*		\$208
Herbicide	0.25	\$9
Contingency (10%)		\$334
SUM		\$3,801

*per estimate from PlantWise. Burn every three years so cost spread across years

Arbor Oaks Rain Gardens

Site Plan

Acres: 0.1
SF: 4,560



NATIVE PLANTS TO LOOK FOR:

Perennials:

Blue Flag Iris (*Iris virginica*)
Boneset (*Eupatorium perfoliatum*)
Brown Fox Sedge (*Carex vulpinoidea*)
Canada Anemone (*Anemone canadensis*)
Common Cinquefoil (*Potentilla simplex*)
Great Blue Lobelia (*Lobelia siphilitica*)
Ironweed (*Vernonia missurica*)
Joe-Pye Weed (*Eutrochium maculatum*)
Mountain Mint (*Pycnanthemum tenuifolium*)
Swamp Milkweed (*Asclepias incarnata*)
Switch Grass (*Panicum virgatum*)
Umbrella Sedge (*Carex muskingumensis*)
Wild Senna (*Senna herbearpa*)
Wild Strawberry (*Fragaria virginiana*)

Shrubs and Trees:

Red-twig Dogwood (*Cornus sericea*)
Pussy Willow (*Salix discolor*)
Northern Red Oak (*Quercus rubra*)