

SYMBOL LEGEND	
[FACP]	FIRE ALARM CONTROL PANEL
[MPS]	ADDRESSABLE MANUAL PULL STATION
[APSD]	ADDRESSABLE ANALOG PHOTOELECTRIC SMOKE DETECTOR
[ADSD]	ADDRESSABLE DUCT SMOKE DETECTOR
[FS]	SPRINKLER FLOW SWITCH
[SV]	SPRINKLER TAMPER SWITCH
[SSD-W]	SYNCHRONIZED STROBE DEVICE, WALL MT.
[SSD-A]	SYNCHRONIZED AUDIBLE/STROBE DEVICE, WALL MT.
[SSD-C]	SYNCHRONIZED STROBE DEVICE, CLG. MT.
[SSD-CA]	SYNCHRONIZED AUDIBLE/STROBE DEVICE, CLG. MT.
[WPA]	120VAC WEATHERPROOF AUDIBLE/STROBE (MOUNTED AT FDC)

NOTE 1: USE 520 HZ LOW FREQUENCY TONE IN COMPLIANCE WITH NFPA 72-2013
 NOTE 2: MAINTAIN EXISTING SINGLE STATION SMOKE ALARMS IN APARTMENTS

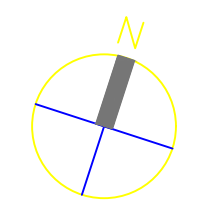
LURIE TERRACE

600 WEST HURON ST
 ANN ARBOR, MI 48103

30514

BASEMENT FLOOR PLAN/
 EAST WING

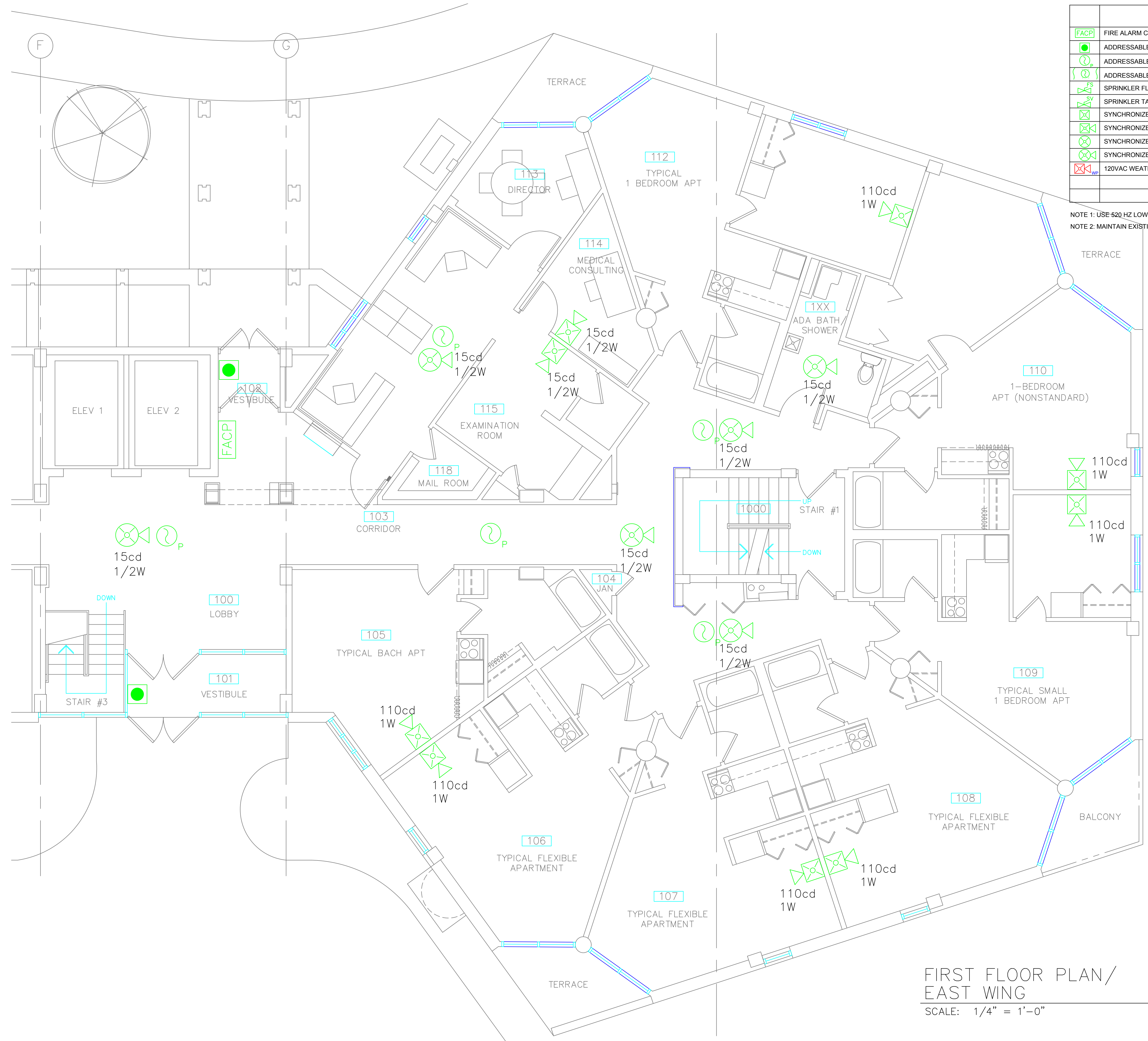
BASEMENT FLOOR PLAN/
 EAST WING
 SCALE: 1/4" = 1'-0"



Rev	Date	Issued For
	12/29/22	FIRE ALARM
1	5/8/23	REV. FLR. PLAN
2	01/25/24	REM.FLDG WALLS
3	01/25/24	REM.FLR FLOW/TMPR

Drawn By _____
 Project Manager _____
 File Name _____

A1.0



SYMBOL LEGEND	
[FACP]	FIRE ALARM CONTROL PANEL
[MPS]	ADDRESSABLE MANUAL PULL STATION
[APSD]	ADDRESSABLE ANALOG PHOTOELECTRIC SMOKE DETECTOR
[ADSD]	ADDRESSABLE DUCT SMOKE DETECTOR
[SFS]	SPRINKLER FLOW SWITCH
[STS]	SPRINKLER TAMPER SWITCH
[SASD-W]	SYNCHRONIZED AUDIBLE/STROBE DEVICE, WALL MT.
[SASD-CG]	SYNCHRONIZED AUDIBLE/STROBE DEVICE, CLG. MT.
[SASD-CG-W]	SYNCHRONIZED AUDIBLE/STROBE DEVICE, CLG. MT.
[WASD]	120VAC WEATHERPROOF AUDIBLE/STROBE (MOUNTED AT FDC)

NOTE 1: USE 520 HZ LOW FREQUENCY TONE IN COMPLIANCE WITH NFPA 72-2013
 NOTE 2: MAINTAIN EXISTING SINGLE STATION SMOKE ALARMS IN APARTMENTS

LURIE TERRACE

600 WEST HURON ST
 ANN ARBOR, MI 48103

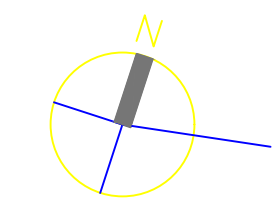
30514

FIRST FLOOR PLAN / EAST WING

Rev	Date	Issued For
1	12/29/22	FIRE ALARM
2	5/8/23	REV. FLR. PLAN
3	01/25/24	REM.FLDG WALLS

Drawn By _____
 Project Manager _____
 File Name _____

FIRST FLOOR PLAN / EAST WING
 SCALE: 1/4" = 1'-0"



SYMBOL LEGEND	
[FACP]	FIRE ALARM CONTROL PANEL
[MPS]	ADDRESSABLE MANUAL PULL STATION
[ASD]	ADDRESSABLE ANALOG PHOTOELECTRIC SMOKE DETECTOR
[ADS]	ADDRESSABLE DUCT SMOKE DETECTOR
[FS]	SPRINKLER FLOW SWITCH
[TS]	SPRINKLER TAMPER SWITCH
[SSD]	SYNCHRONIZED STROBE DEVICE, WALL MT.
[SSD]	SYNCHRONIZED AUDIBLE/STROBE DEVICE, WALL MT.
[SSD]	SYNCHRONIZED STROBE DEVICE, CLG. MT.
[SSD]	SYNCHRONIZED AUDIBLE/STROBE DEVICE, CLG. MT.
[WAS]	120VAC WEATHERPROOF AUDIBLE/STROBE (MOUNTED AT FDC)

NOTE 1: USE 520 HZ LOW FREQUENCY TONE IN COMPLIANCE WITH NFPA 72-2013
 NOTE 2: MAINTAIN EXISTING SINGLE STATION SMOKE ALARMS IN APARTMENTS



FIRST FLOOR PLAN/
 WEST WING
 SCALE: 1/4" = 1'-0"

LURIE
 TERRACE

600 WEST HURON ST
 ANN ARBOR, MI 48103

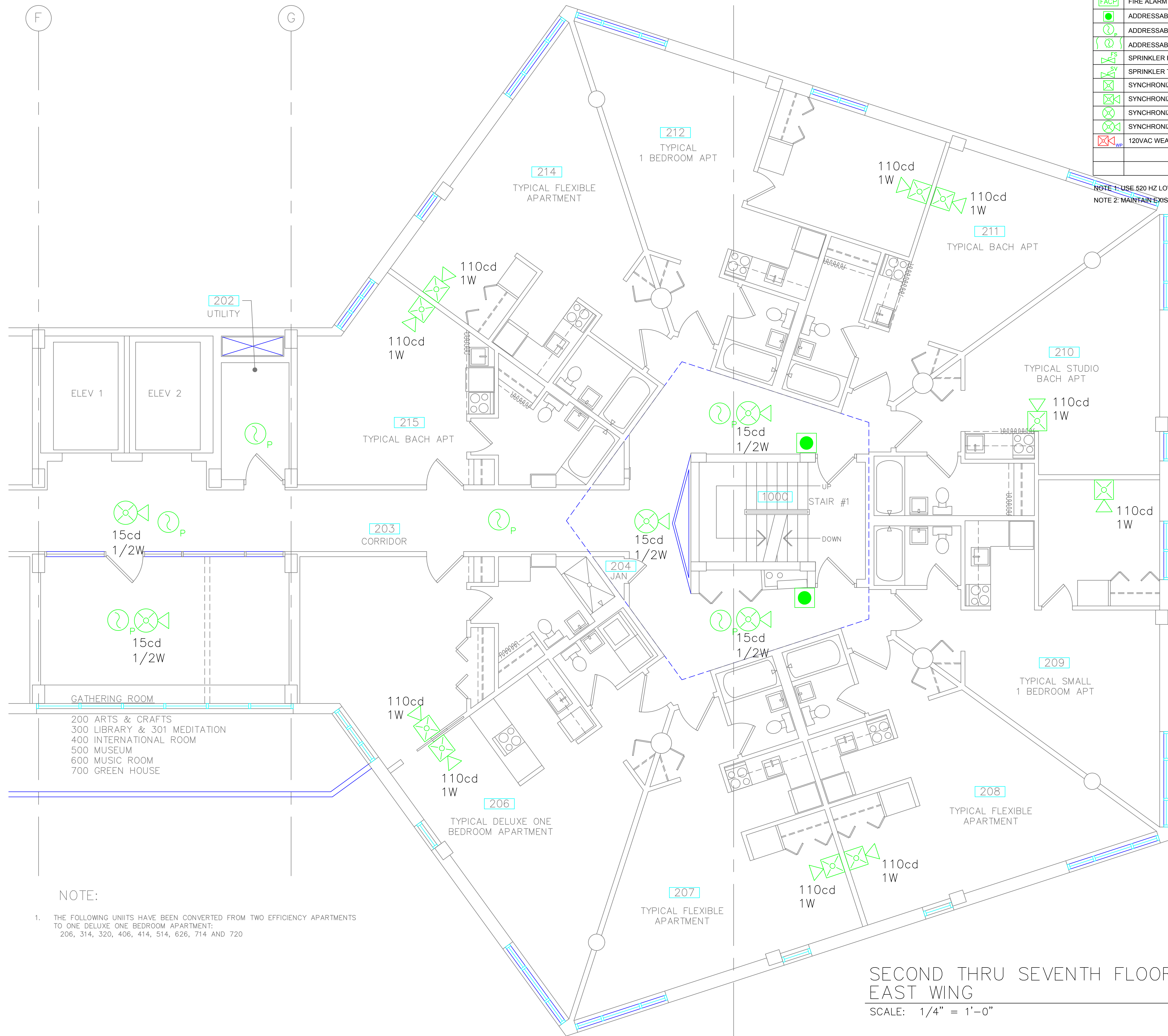
30514

FIRST FLOOR
 PLAN /
 WEST WING

Rev	Date	Issued For
	12/29/22	FIRE ALARM
	01/25/24	REM.FLDG WALLS

Drawn By _____
 Project Manager _____
 File Name _____

A1.2



SYMBOL LEGEND	
[FACP]	FIRE ALARM CONTROL PANEL
[MPS]	ADDRESSABLE MANUAL PULL STATION
[APSD]	ADDRESSABLE ANALOG PHOTOELECTRIC SMOKE DETECTOR
[ADSD]	ADDRESSABLE DUCT SMOKE DETECTOR
[FS]	SPRINKLER FLOW SWITCH
[TS]	SPRINKLER TAMPER SWITCH
[S-WALL]	SYNCHRONIZED STROBE DEVICE, WALL MT.
[S-WALL-A]	SYNCHRONIZED AUDIBLE/STROBE DEVICE, WALL MT.
[S-CLG]	SYNCHRONIZED STROBE DEVICE, CLG. MT.
[S-CLG-A]	SYNCHRONIZED AUDIBLE/STROBE DEVICE, CLG. MT.
[WPA]	120VAC WEATHERPROOF AUDIBLE/STROBE (MOUNTED AT FDC)

NOTE 1: USE 520 HZ LOW FREQUENCY TONE IN COMPLIANCE WITH NFPA 72-2013
 NOTE 2: MAINTAIN EXISTING SINGLE STATION SMOKE ALARMS IN APARTMENTS

LURIE TERRACE
 600 WEST HURON ST
 ANN ARBOR, MI 48103

30514

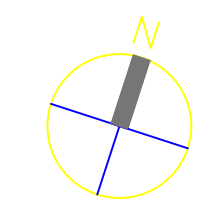
SECOND THRU SEVENTH FLOOR PLAN/
 EAST WING

NOTE:
 1. THE FOLLOWING UNITS HAVE BEEN CONVERTED FROM TWO EFFICIENCY APARTMENTS TO ONE DELUXE ONE BEDROOM APARTMENT:
 206, 314, 320, 406, 414, 514, 626, 714 AND 720

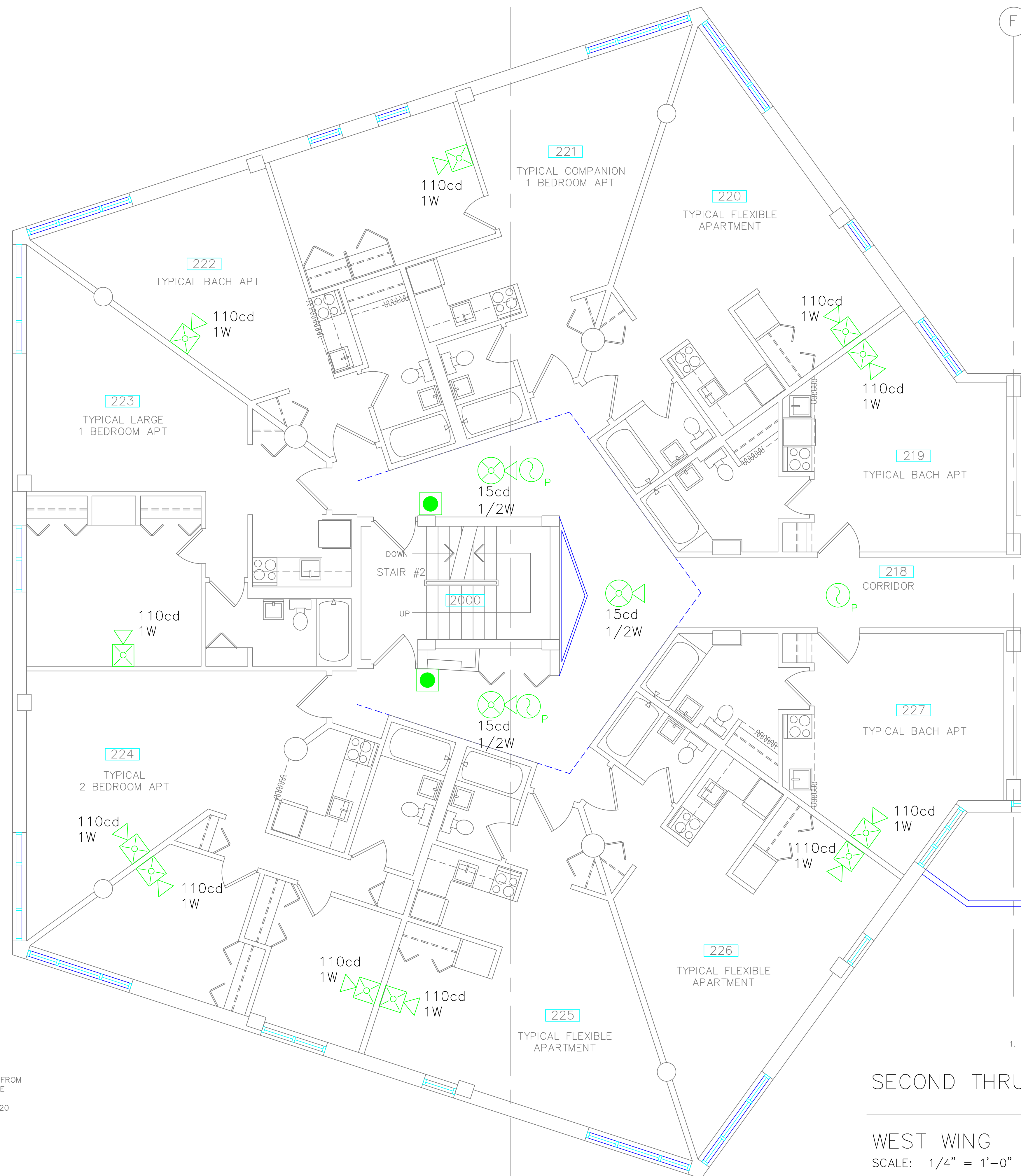
Rev Date Issued For
 12/29/22 FIRE ALARM
 01/25/24 REM.FLDG WALLS

Drawn By _____
 Project Manager _____
 File Name _____

SECOND THRU SEVENTH FLOOR PLAN/
 EAST WING
 SCALE: 1/4" = 1'-0"



A1.3



SYMBOL LEGEND	
[FACP]	FIRE ALARM CONTROL PANEL
[MPS]	ADDRESSABLE MANUAL PULL STATION
[ASD]	ADDRESSABLE ANALOG PHOTOELECTRIC SMOKE DETECTOR
[SDS]	ADDRESSABLE DUCT SMOKE DETECTOR
[SFS]	SPRINKLER FLOW SWITCH
[STS]	SPRINKLER TAMPER SWITCH
[SASD]	SYNCHRONIZED STROBE DEVICE, WALL MT.
[SASD]	SYNCHRONIZED AUDIBLE/STROBE DEVICE, WALL MT.
[SSD]	SYNCHRONIZED STROBE DEVICE, CLG. MT.
[SSD]	SYNCHRONIZED AUDIBLE/STROBE DEVICE, CLG. MT.
[WASD]	120VAC WEATHERPROOF AUDIBLE/STROBE (MOUNTED AT FDC)

NOTE 1: USE 520 HZ LOW FREQUENCY TONE IN COMPLIANCE WITH NFPA 72-2013
 NOTE 2: MAINTAIN EXISTING SINGLE STATION SMOKE ALARMS IN APARTMENTS

LURIE TERRACE

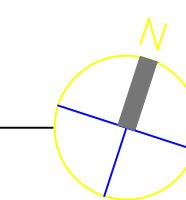
600 WEST HURON ST
 ANN ARBOR, MI 48103

30514

SECOND THRU EIGHT FLOOR PLAN/
 WEST WING

Rev	Date	Issued For
	12/29/22	FIRE ALARM
	01/25/24	REM.FLDG WALLS

Drawn By _____
 Project Manager _____
 File Name _____



SECOND THRU EIGHTH FLOOR PLAN/
 WEST WING

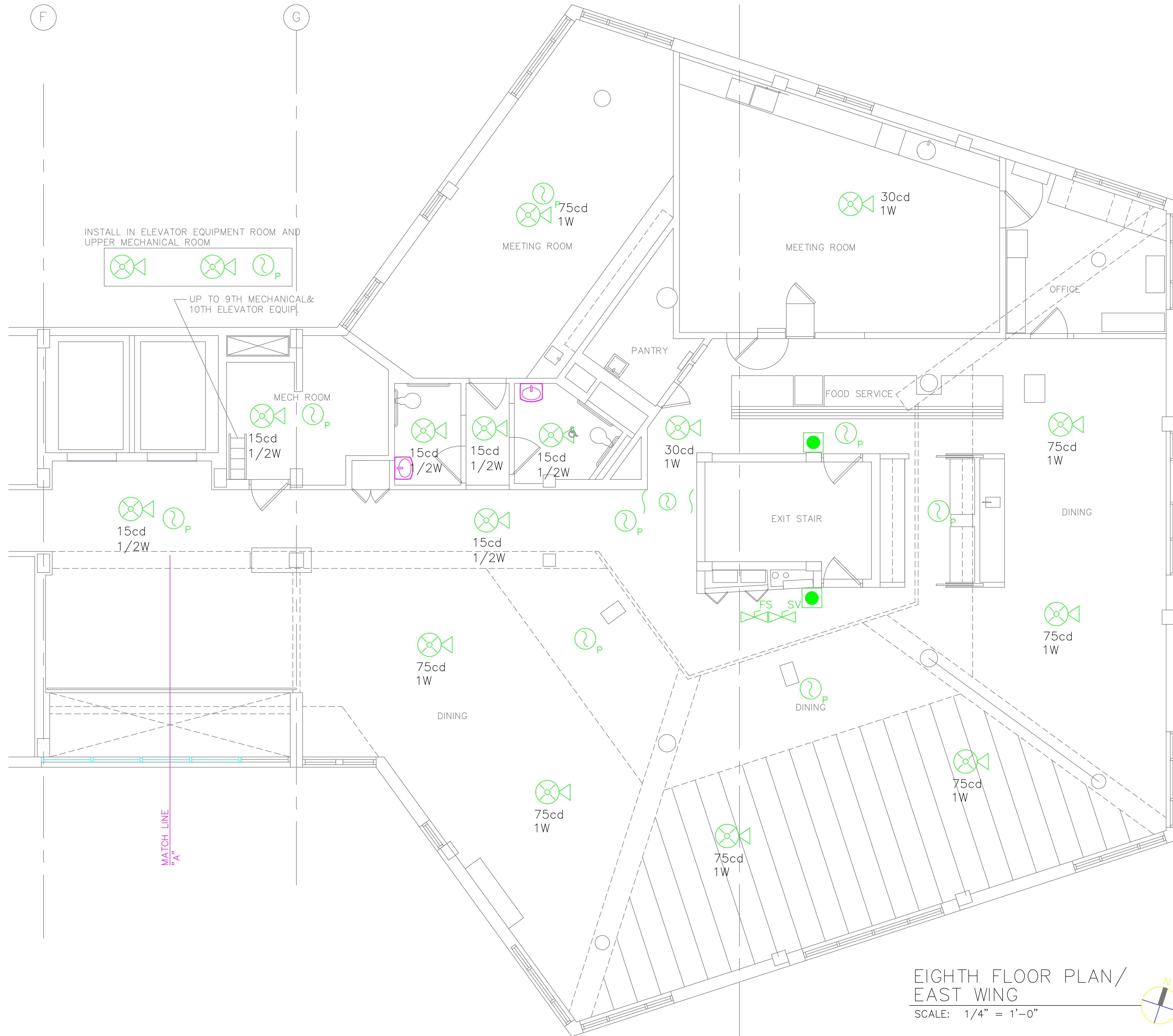
SCALE: 1/4" = 1'-0"

NOTE:

- THE FOLLOWING UNITS HAVE BEEN CONVERTED FROM TWO EFFICIENCY APARTMENTS TO ONE DELUXE ONE BEDROOM APARTMENT:
 206, 314, 320, 406, 414, 514, 626, 714 AND 720

SYMBOL LEGEND	
	FIRE ALARM CONTROL PANEL
	ADDRESSABLE MANUAL PULL STATION
	ADDRESSABLE ANALOG PHOTOELECTRIC SMOKE DETECTOR
	ADDRESSABLE DUCT SMOKE DETECTOR
	SPRINKLER FLOW SWITCH
	SPRINKLER TAMPER SWITCH
	SYNCHRONIZED STROBE DEVICE, WALL MT.
	SYNCHRONIZED AUDIBLE/STROBE DEVICE, WALL MT.
	SYNCHRONIZED STROBE DEVICE, CLG. MT.
	SYNCHRONIZED AUDIBLE/STROBE DEVICE, CLG. MT.
	120VAC WEATHERPROOF AUDIBLE/STROBE (MOUNTED AT FDC)

NOTE 1: USE 520 HZ LOW FREQUENCY TONE IN COMPLIANCE WITH NFPA 72-2013
 NOTE 2: MAINTAIN EXISTING SINGLE STATION SMOKE ALARMS IN APARTMENTS



LURIE TERRACE

600 WEST HURON ST
ANN ARBOR, MI 48103

30514

EIGHTH FLOOR PLAN/
EAST WING

Rev	Date	Issued For
	12/29/22	FIRE ALARM
	01/25/24	REM.FLDG WALLS

Drawn By _____
 Project Manager _____
 File Name _____

A1.5