

See 4400 1054 Page 518

ORIGINAL
PLAN OF

CALKINS PACKARD STREET SUBDIVISION

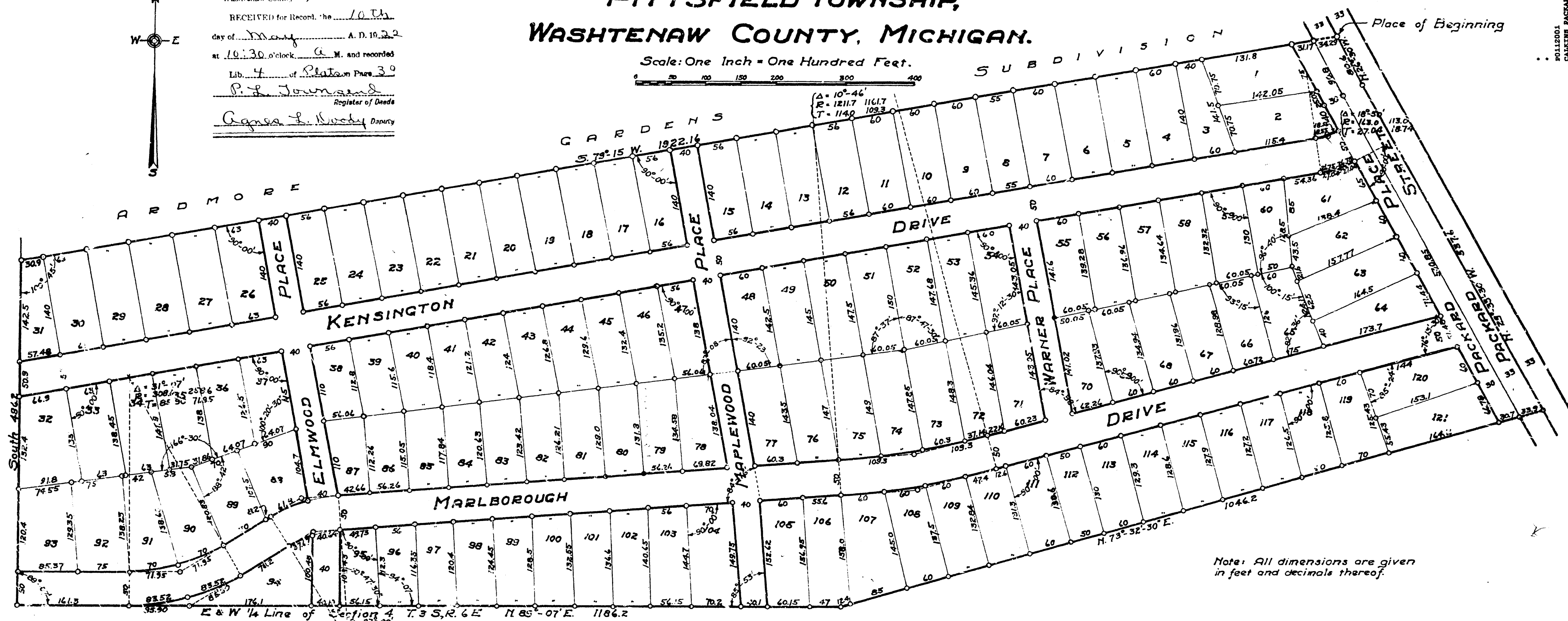
OF PART OF THE NORTH ONE HALF OF SECTION 4, T.3S, R.6E, MERIDIAN OF MICHIGAN,

PITTSFIELD TOWNSHIP, WASHTENAW COUNTY, MICHIGAN.

May 8-1922
Geo. L. Howard

REGISTER OF DEEDS
Washtenaw County }
RECEIVED for Record, this 10th
day of May, A. D. 1922
at 10:30 o'clock, A. M. and recorded
Lib. 4 of Plate 30
P. F. Townsend
Register of Deeds
Gagne L. Woody Deputy

Scale: One Inch = One Hundred Feet.



Note: All dimensions are given in feet and decimals thereof.

DEDICATION.

KNOW ALL MEN BY THESE PRESENTS, That we Eleazer E. Calkins as proprietor, and Allie W. Calkins his wife, have caused the land embraced in the annexed plat to be surveyed, laid out and platted, to be known as CALKINS PACKARD STREET SUBDIVISION of part of the north one half of section 4, T.3S, R.6E, Meridian of Michigan, Pittsfield Township, Washtenaw County, Michigan and that the streets as shown on said plat are hereby dedicated to the use of the public.

Signed and Sealed in Presence of
Eleazer E. Calkins (L.S.)
Allie W. Calkins (L.S.)

STATE OF MICHIGAN, }
County of Washtenaw } ss.

On this 1st day of May, 1922, before me, a Notary Public in and for said county, personally came the above named Eleazer E. Calkins and Allie W. Calkins his wife, known to me to be the persons who executed the above dedication, and acknowledged the same to be their free act and deed.

Edwin A. Grant
Notary Public Washtenaw Co., Mich.
My Commission expires 8/28/22

DESCRIPTION.

The land embraced in the annexed plat of CALKINS PACKARD STREET SUBDIVISION of part of the north one half of section 4, T.3S, R.6E, Meridian of Michigan, Pittsfield Township, Washtenaw County, Michigan, is described as follows: Commencing at the southeast corner of Ardmore Gardens Subdivision; thence on the south line of Ardmore Gardens Subdivision S. 79° 15' W. 1922.16 feet to the southwest corner of said subdivision; thence South 49.62 feet to a point on the east and west quarter line of said section 4; thence N. 89° 07' E. along said quarter line 118.62 feet; thence S. 73° 32' 30" E. 1046.2 feet to a point on the center line of Packard Street; thence along said center line N. 29° 33' 30" W. 537.6 feet to an angle point in the center line of said street; thence continuing on the center line of Packard Street N. 26° 30' W. 80.6 feet; to the place of beginning.

TAX CERTIFICATE.

OFFICE OF COUNTY TREASURER, WASHTENAW COUNTY, MICHIGAN.

I hereby certify, that there are no tax liens or titles held by the State on the lands described above, and that there are no tax liens or titles held by individuals on said lands, for the five years preceding the day of May 1, 1922, and that the taxes for said period of five years are paid, as shown by the records of this office.

Mabel E. Boland
County Treasurer

SURVEYOR'S CERTIFICATE.

I hereby certify that the plat hereon delineated is a correct one, and that permanent monuments, consisting of iron pipes one half inch or more in diameter and fifteen inches or more in length, have been planted at points marked thus o as thereon shown at all angles in the boundaries of the land platted, and at all intersections of streets.

H. H. Atwell
Registered Civil Engineer

CERTIFICATE OF APPROVAL BY THE TOWNSHIP BOARD.

This plat was approved by the Township Board of Pittsfield Township, Washtenaw County, Michigan at a meeting held May 7, 1922.

Arthur H. Minisny
Clerk

CERTIFICATE OF APPROVAL BY THE BOARD OF COUNTY AUDITORS.

Approved by the Board of County Auditors of Washtenaw County, Michigan, this 2nd day of May, 1922.

A. D. Power
Chairman
Al Sullivan
Edwin H. Smith

1 of 1
CALKINS PACKARD STREET SUBDIVISION
PAGE 19
05/10/1922