

2nd copy

Mar 17-1932
H. S. Hauser

1 of 1
03/18/1932
ASSESSOR'S PLAT NO. 22
PAGE 6

ASSESSOR'S PLAT NO 22 IN THE CITY OF ANN ARBOR, WASHTENAW CO, MICHIGAN.

SCALE 1"=80'

SURVEYOR'S CERTIFICATE

I hereby certify that the plat hereon delineated is a correct one and that permanent metal monuments of not less than one inch in diameter and fifteen inches in length set in a concrete base at least four inches in diameter and forty eight inches in depth have been placed at the points marked thus: \odot as thereon shown at all angles in the boundaries of the land platted, at all the intersections of streets, intersections of alleys or of streets and alleys and at the intersections of streets and alleys with the boundaries of the plat as shown on said plat.

George H. Vandenberg
Registered Civil Engineer.

CERTIFICATE OF MUNICIPAL APPROVAL

This plat was approved by the Common Council of the City of Ann Arbor, Washtenaw County, Michigan at a meeting held Jan 14 1932

George H. Vandenberg
Clerk

This plat was approved by the Board of Public Works of the City of Ann Arbor, Washtenaw County, Michigan at a meeting held Jan 20 1932

George H. Vandenberg
Clerk

CERTIFICATE OF APPROVAL BY BOARD OF COUNTY AUDITORS

Approved by the Board of County Auditors of Washtenaw County, Michigan this 26 day of Feb 1932

L. C. Rushing
Chairman
Walter M. Foster
Oliver C. Brown

DEDICATION

KNOW ALL MEN BY THESE PRESENTS: That I Herbert W. Crippen, Assessor of the City of Ann Arbor, Washtenaw County, Michigan by virtue of authority in me vested by Section 51, Act 172, P.A. of 1929, having been duly authorized by the Common Council of the City of Ann Arbor, Washtenaw County, Michigan have caused the land described in the annexed plat to be surveyed, laid out and platted to be known as "Assessor's Plat No. 22" in the City of Ann Arbor, Washtenaw County, Michigan being a part of the South half of Section 20, T. 2. S., R. 6. E., Washtenaw County, Michigan and that the streets and alleys as shown on said plat are hereby dedicated to the use of the public.

Herbert W. Crippen
Assessor of the City of Ann Arbor,
Washtenaw County, Michigan.

WITNESSES

Samuel Beckman
Harold R. Scoville

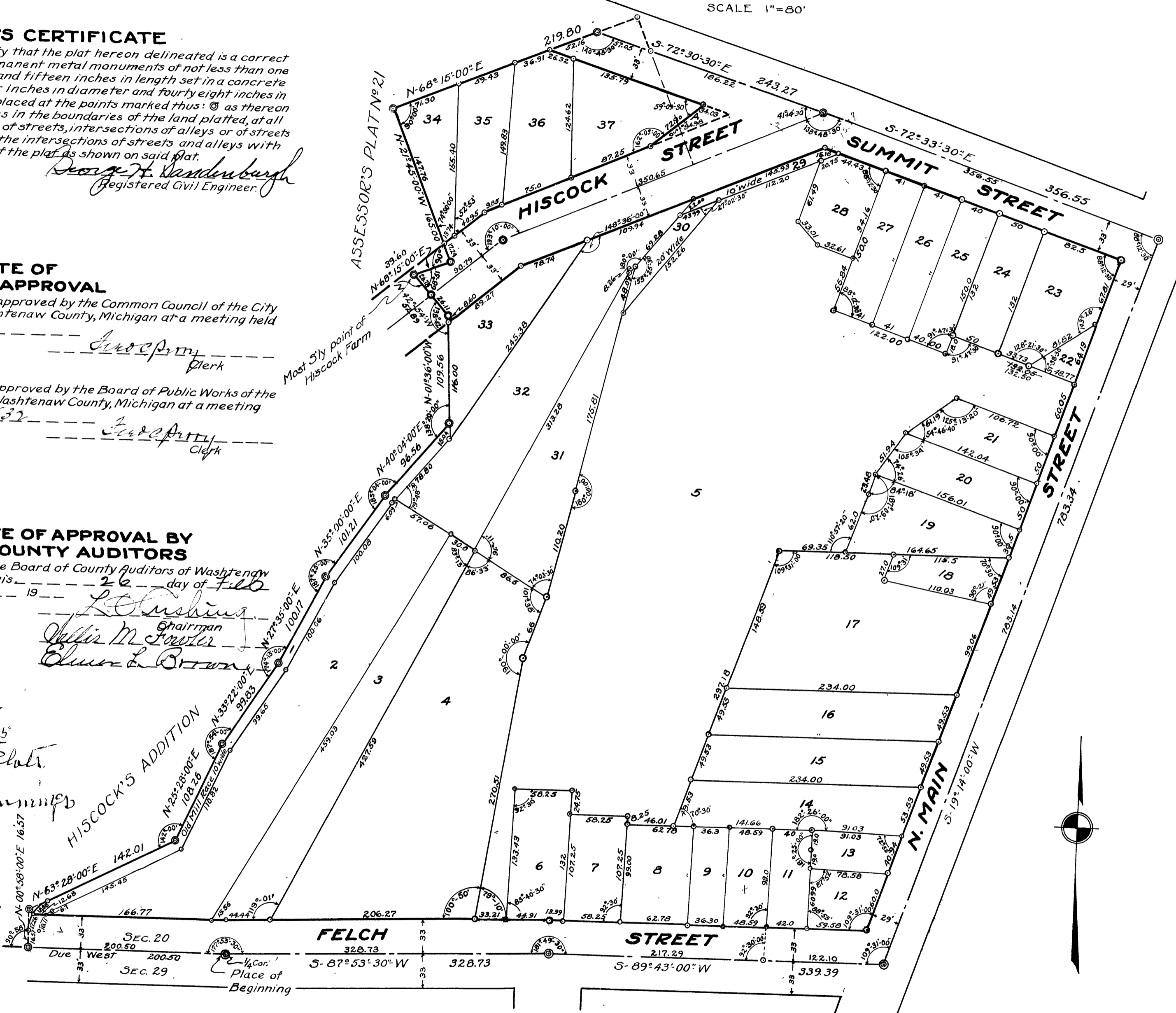
ACKNOWLEDGEMENT

STATE OF MICHIGAN } ss
WASHTENAW COUNTY }
On this 21 day of February A.D. 1932, before me, a Notary Public, in and for said County, personally came the above named Herbert W. Crippen, Assessor of the City of Ann Arbor, Washtenaw County, Michigan known to me to be the person who executed the above dedication, and acknowledged the same to be his free act and deed as such Assessor.

Ernest M. Wurster
Notary Public in and for Washtenaw County, Mich.
My Commission expires _____

DESCRIPTION

Commencing at the Quarter Corner between Sections 20 and 29, T. 2. S., R. 6. E., Michigan for the Place of Beginning; thence due West 200.50 feet; thence N-0°58'10"E, 16.57 feet to the Point of Curvature of a Circular Curve with Central Angle of 62°30'00"; Tangent of 20.16 feet and Radius 33.22 feet; thence thru the Arc of this Curve 36.24 feet to the Point of Tangency; thence N-63°28'00"E, 142.01 feet; thence N-25°28'00"E, 108.26 feet; thence N-33°22'00"E, 99.83 feet; thence N-27°35'00"E, 108.17 feet; thence N-35°00'00"E, 101.21 feet; thence N-40°04'00"E, 96.56 feet; thence N-01°36'00"W, 109.56 feet; thence N-42°54'00"W, 32.89 feet; thence N-68°15'00"E, 39.60 feet; thence N-21°45'00"W, 165.00 feet; thence N-68°15'00"E, 219.80 feet; thence S-72°30'30"E, along the Center Line of Summit Street 243.27 feet; thence S-72°33'30"E, 356.55 feet to the Center Line of N. Main Street; thence S-19°14'00"W, along the Center Line of N. Main Street 783.34 feet to its intersection with the Center Line of Felch Street; thence S-89°43'00"W along the Center Line of Felch Street 339.39 feet; thence S-87°53'30"W along the Center Line of Felch Street 328.73 feet to the Place of Beginning.



Washtenaw
Assessor's Plat No. 22
Mar 9 1932
John A. Cummings

Mar 17-1932
H. S. Hauser

Mar 24-1932
H. S. Hauser