

2nd copy

# "ASSESSOR'S PLAT No 21

REPLAT OF BLOCK 15 OF HISCOCKS ADDITION TO THE

## CITY OF ANN ARBOR, WASHTENAW CO, MICHIGAN.

Scale 1"=60'

Mar 17-1932  
Chas B. Hansen

1 OF 1  
03/18/1932  
ASSESSOR'S PLAT NO. 21  
PAGE: 5

### DEDICATION

KNOW ALL MEN BY THESE PRESENTS: That I Herbert W. Crippen, Assessor of the City of Ann Arbor, Washtenaw County, Michigan, by virtue of authority in me vested by Section 51, Act 172 of P.A. 1929, having been duly authorized by the Common Council of the City of Ann Arbor, Washtenaw County, Michigan, have caused the land described in the annexed plat to be surveyed, laid out and platted to be known as "ASSESSOR'S PLAT No. 21 REPLAT OF BLOCK 15 OF HISCOCKS ADDITION" TO THE CITY OF ANN ARBOR, Washtenaw Co, Michigan, being a part of Section 20, T.2.S., R.6.E. Washtenaw Co, Michigan, and that the streets and alleys as shown on said plat are hereby dedicated to the use of the public.

Herbert W. Crippen  
Assessor of the City of Ann Arbor,  
Washtenaw Co, Michigan.

Witnesses

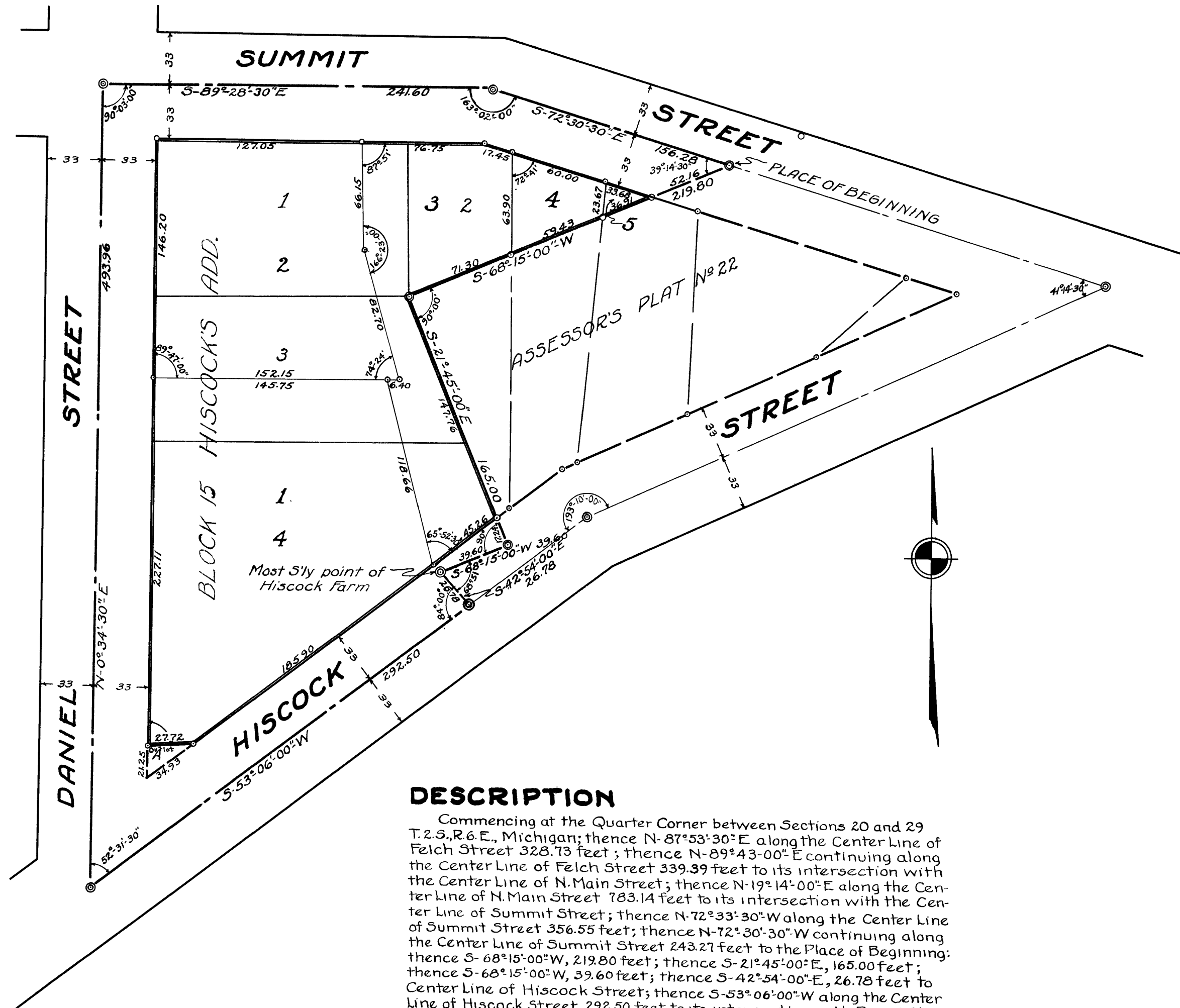
John M. Bluetman  
Harold R. Scovill

### ACKNOWLEDGEMENT

STATE OF MICHIGAN }  
WASHTENAW COUNTY }  
On this seventeenth day of February  
A.D. 1932, before me, a Notary Public, in and for said County, personally came the above named Herbert W. Crippen, Assessor of the City of Ann Arbor, Washtenaw County, Michigan known to me to be the person who executed the above dedication, and acknowledged the same to be his free act and deed as such Assessor.

Ernest M. Warner  
Notary Public in and for Washtenaw Co.,  
Michigan.

My Commission expires \_\_\_\_\_



### DESCRIPTION

Commencing at the Quarter Corner between Sections 20 and 29 T.2.S., R.6.E., Michigan; thence N-87°53'30"E along the Center Line of Felch Street 328.73 feet; thence N-89°43'00"E continuing along the Center Line of Felch Street 339.39 feet to its intersection with the Center Line of N. Main Street; thence N-19°14'00"E along the Center Line of N. Main Street 783.14 feet to its intersection with the Center Line of Summit Street; thence N-72°33'30"W along the Center Line of Summit Street 356.55 feet; thence N-72°30'30"W continuing along the Center Line of Summit Street 243.27 feet to the Place of Beginning; thence S-68°15'00"W, 219.80 feet; thence S-21°45'00"E, 165.00 feet; thence S-68°15'00"W, 39.60 feet; thence S-42°54'00"E, 26.78 feet to Center Line of Hiscock Street; thence S-53°06'00"W along the Center Line of Hiscock Street 292.50 feet to its intersection with Daniel Street; thence N-0°34'30"E along the Center Line of Daniel Street 493.96 feet to its intersection with the Center Line of Summit Street; thence S-89°28'30"E along the Center Line of Summit Street 241.60 feet; thence S-72°30'30"E continuing along the Center Line of Summit Street 156.28 feet to the Place of Beginning.

### SURVEYOR'S CERTIFICATE

I hereby certify that the plat hereon delineated is a correct one and that permanent metal monuments of not less than one inch in diameter and fifteen inches in length set in a concrete base at least four inches in diameter and forty eight inches in depth have been placed at the points marked thus: @ as thereon shown at all angles in the boundaries of the land platted, at all the intersections of streets, intersections of alleys or of streets and alleys and at the intersections of streets and alleys with the boundaries of the plat as shown on said plat.

George H. Sandenburgh  
Registered Civil Engineer.

### CERTIFICATE OF MUNICIPAL APPROVAL

This plat was approved by the Common Council of the City of Ann Arbor, Washtenaw Co, Michigan at a meeting held Feb 1 1932

John M. Bluetman  
Clerk

This plat was approved by the Board of Public Works of the City of Ann Arbor, Washtenaw Co., Michigan at a meeting held Jan 20 1932

John M. Bluetman  
Clerk

### CERTIFICATE OF APPROVAL BY BOARD OF COUNTY AUDITORS

Approved by the Board of County Auditors of Washtenaw County, Michigan this 26 day of Feb 1932

William M. Fowler  
Chairman  
Edwin L. Brown

Washtenaw  
Assessor's Plat No 21  
Mar 18 1932  
John S. Cummings

Mar 17-1932  
Chas B. Hansen

Mar 27-1932  
Chas B. Hansen

Handwritten notes at bottom right corner.