

Primary Control Point

AAGRS No. 0005B

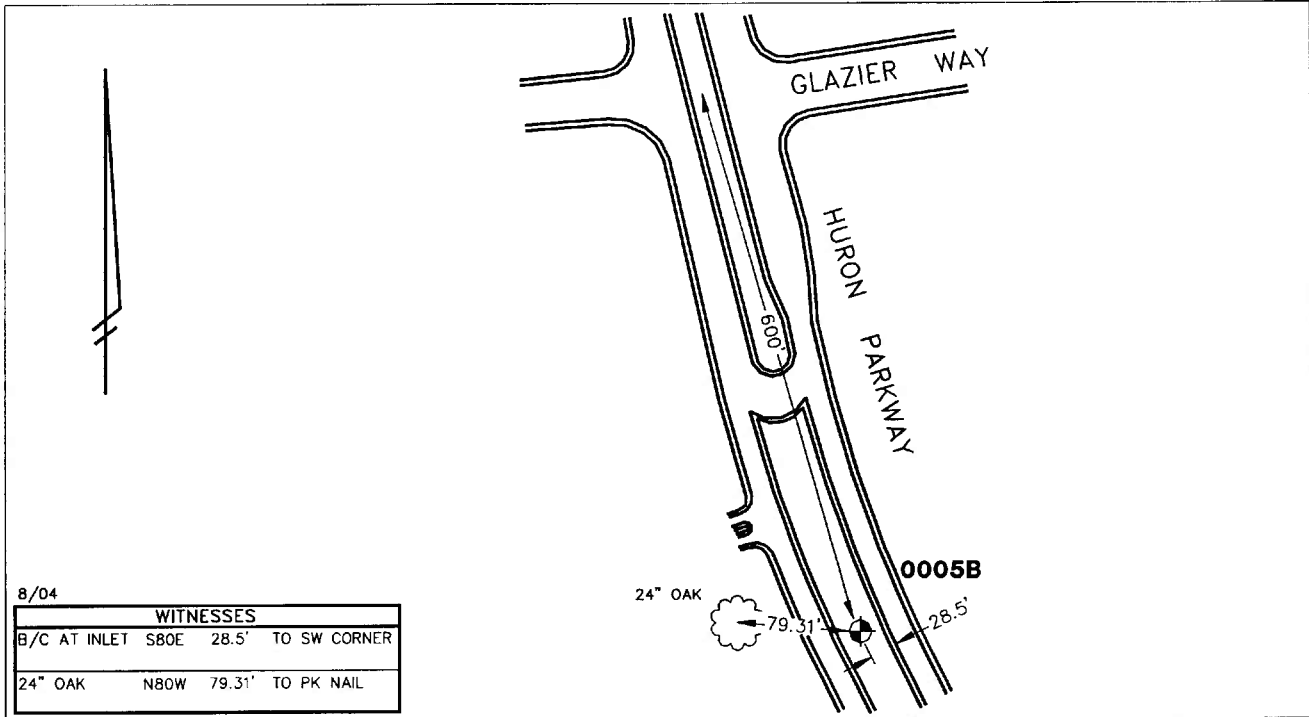
City of Ann Arbor

NGS PID AA5192

Public Services Area • Project Management Unit

CONTROL STATION DATA SHEET

Approximate Location: Huron Pkwy. South of Glazier Way



STATION 0005B IS LOCATED IN THE GRASS TRAFFIC ISLAND BETWEEN NORTHBOUND AND SOUTHBOUND HURON PARKWAY, APPROXIMATELY 600' SOUTH OF GLAZIER WAY, SAID STATION BEING IN THE NORTHEAST 1/4 OF SECTION 27, ANN ARBOR TOWNSHIP IN THE CITY OF ANN ARBOR, MICHIGAN. THE STATION IS LOCATED APPROXIMATELY 600' SOUTH OF GLAZIER WAY AND 28.5' SOUTHWEST OF THE BACK OF CURB ALONG THE EASTERLY SIDE OF THE GRASS TRAFFIC ISLAND. SAID STATION IS A PRIMARY CONTROL STATION AND IS DESCRIBED AS THE 1993 EDITION OF THE CITY OF ANN ARBOR BRASS DISC, SET IN CONCRETE PER DETAIL I AND IS FLUSH WITH THE GROUND. THIS STATION WAS SET BY THE CITY OF ANN ARBOR IN 1993 AND IS PAIRED WITH STATION 0005A.

Horizontal			Vertical	
Latitude (dms)	N	42 17 10.57044	Accuracy	2nd Order Class II
Longitude (dms)	W	83 42 10.73613	Datum	NAVD 88
State Plane Zone		2113 MI South	Elevation in meters	239.815
Scale		0.99996110	Elevation in International feet	786.79
Geoid Height in meters		-33.92		
Convergence (dms)		0 27 6.0		
Accuracy		1st Order		No. 0005B
Datum		NAD 83		Sector: EC
Eastings (X) in meters		4054736.920		
Northing (Y) in meters		87553.166		
Eastings (X) in International feet		13302942.651	Grid Azimuth to	
Northing (Y) in International feet		287247.920	Control Station 0005A	343°25'50"