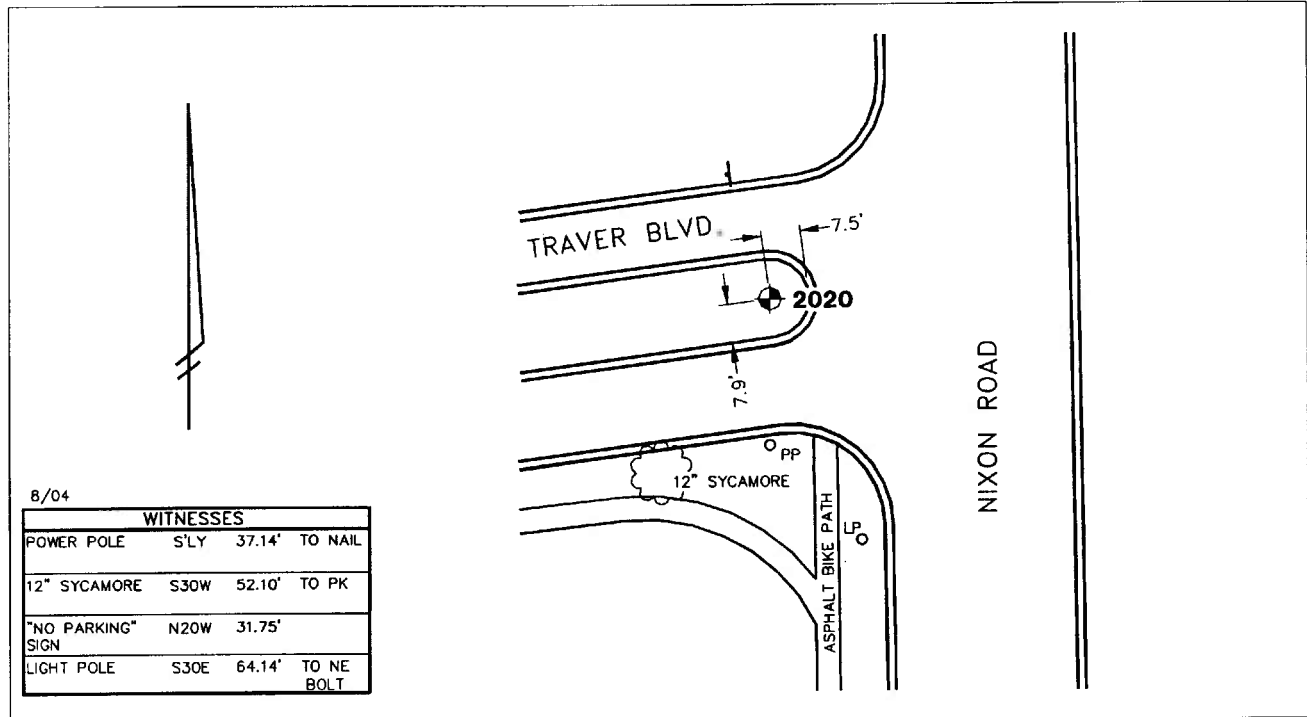


**City of Ann Arbor**  
**Public Services Area • Project Management Unit**  
**CONTROL STATION DATA SHEET**

NGS PID

**Approximate Location: Nixon Rd. and Traver Blvd.**



STATION 2020 IS LOCATED IN THE GRASS TRAFFIC ISLAND ON TRAVER BOULEVARD AND WEST OF NIXON ROAD, SAID STATION BEING IN THE NORTHEAST 1/4 OF SECTION 15, ANN ARBOR TOWNSHIP IN THE CITY OF ANN ARBOR, MICHIGAN. THE STATION IS LOCATED 7.5' WEST OF THE BACK OF CURB AT THE EAST END OF SAID TRAFFIC ISLAND AND 7.9' NORTH OF THE BACK OF CURB AT THE SOUTH EDGE OF SAID TRAFFIC ISLAND. SAID STATION IS A VERTICAL CONTROL STATION AND IS DESCRIBED AS THE 1993 EDITION OF THE CITY OF ANN ARBOR BRASS DISC, SET IN CONCRETE PER DETAIL II AND IS FLUSH WITH THE GROUND. THE STATION WAS SET BY THE CITY OF ANN ARBOR IN 2001.

**Benchmark**

	<b>Vertical</b>	
Accuracy		Local Control
Datum		NAVD 88
Elevation in meters		277.080
Elevation in International feet		909.06

**No. 2020**  
**Sector: NE**