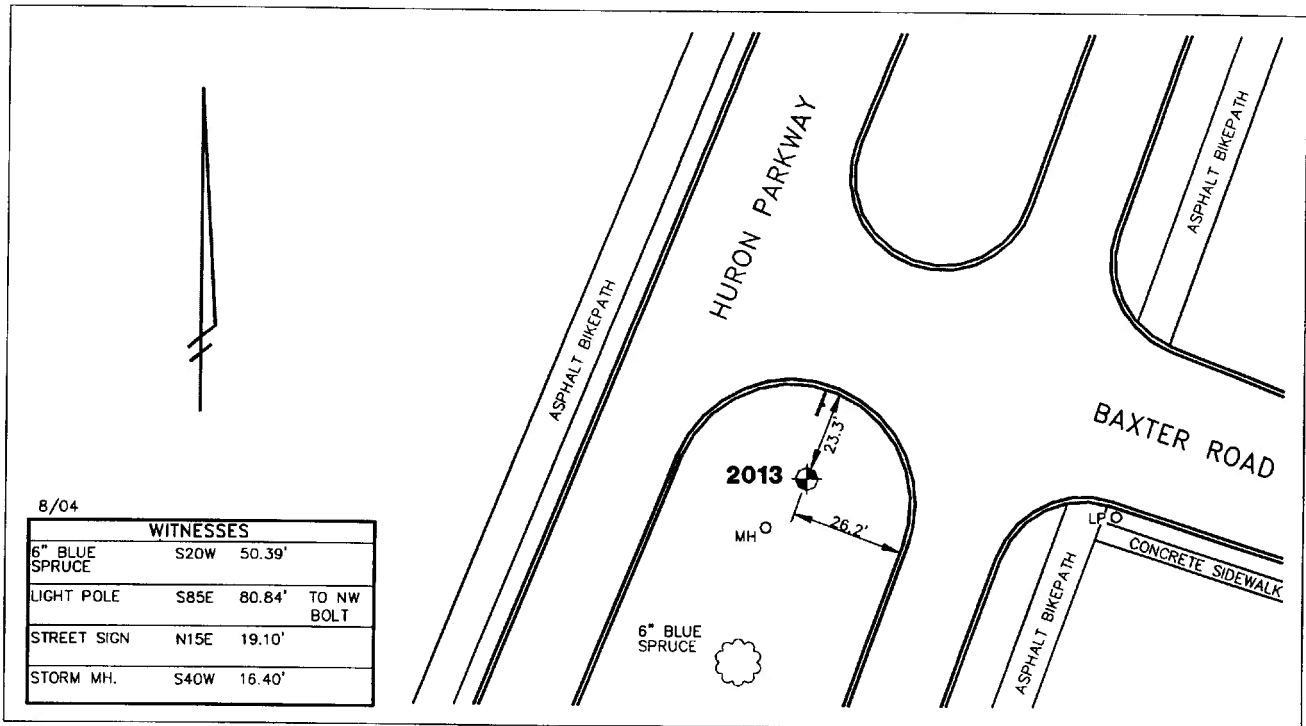


City of Ann Arbor
 Public Services Area • Project Management Unit
CONTROL STATION DATA SHEET

Approximate Location: Huron Parkway and Baxter Road



8/04

WITNESSES	
6" BLUE SPRUCE	S20W 50.39'
LIGHT POLE	S85E 80.84' TO NW BOLT
STREET SIGN	N15E 19.10'
STORM MH.	S40W 16.40'

STATION 2013 IS LOCATED IN THE GRASS TRAFFIC ISLAND ON HURON PARKWAY AND SOUTHERLY OF BAXTER ROAD, SAID STATION BEING IN THE NORTHEAST 1/4 OF SECTION 22, ANN ARBOR TOWNSHIP IN THE CITY OF ANN ARBOR, MICHIGAN. THE STATION IS LOCATED 23.3' SOUTHERLY OF THE BACK OF CURB AT THE NORTHERLY END OF SAID TRAFFIC ISLAND AND 26.2' WESTERLY OF THE BACK OF CURB AT THE EASTERLY EDGE OF SAID TRAFFIC ISLAND. SAID STATION IS A VERTICAL CONTROL STATION AND IS DESCRIBED AS THE 1993 EDITION OF THE CITY OF ANN ARBOR BRASS DISC, SET IN CONCRETE PER DETAIL II AND IS FLUSH WITH THE GROUND. THE STATION WAS SET BY THE CITY OF ANN ARBOR IN 2001.

Benchmark

Vertical

Accuracy	Local Control
Datum	NAVD 88
Elevation in meters	261.569
Elevation in International feet	858.17

No. 2013
 Sector: NE