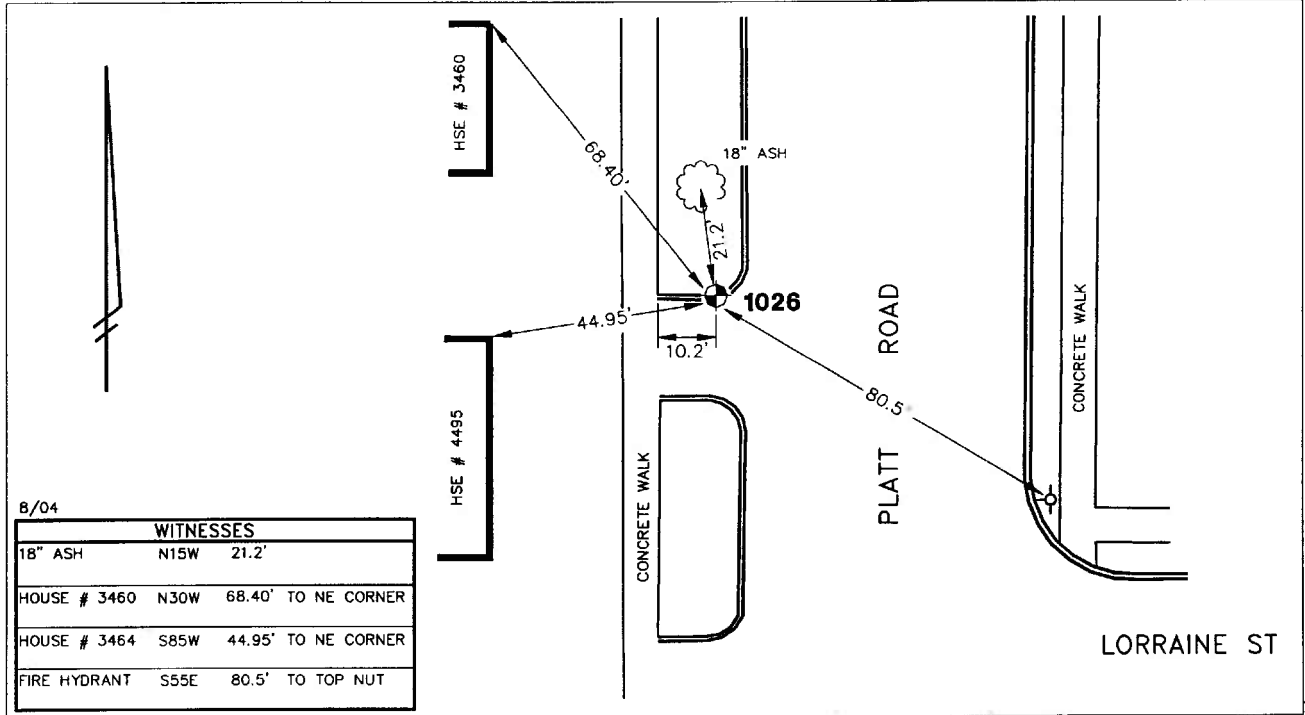


City of Ann Arbor  
 Public Services Area • Project Management Unit  
**CONTROL STATION DATA SHEET**

Approximate Location: Platt Rd. at Lorraine St.



B/04

WITNESSES		
18" ASH	N15W	21.2'
HOUSE # 3460	N30W	68.40' TO NE CORNER
HOUSE # 3464	S85W	44.95' TO NE CORNER
FIRE HYDRANT	S55E	80.5' TO TOP NUT

STATION 1026 IS LOCATED ON THE WEST SIDE OF PLATT ROAD, NORTH OF LORRAINE STREET, SAID STATION BEING IN THE NORTHEAST 1/4 OF SECTION 10, PITTSFIELD TOWNSHIP IN THE CITY OF ANN ARBOR, MICHIGAN. THE STATION IS LOCATED ON THE NORTH EDGE OF THE CONCRETE DRIVEWAY TO 4495 PLATT ROAD AND 3.6' WEST OF THE BACK OF CURB ALONG THE WEST SIDE OF PLATT ROAD. SAID STATION IS A VERTICAL CONTROL STATION AND IS DESCRIBED AS THE 1972 EDITION OF THE CITY OF ANN ARBOR BRASS DISC, SET IN CONCRETE PER DETAIL III AND IS FLUSH WITH THE GROUND. THIS STATION WAS SET BY THE CITY OF ANN ARBOR 1972.

**Benchmark**

**Vertical**

Accuracy 2nd Order Class II  
 Datum NAVD 88  
 Elevation in meters 250.626  
 Elevation in International feet 822.26

**No. 1026**  
**Sector: SE**