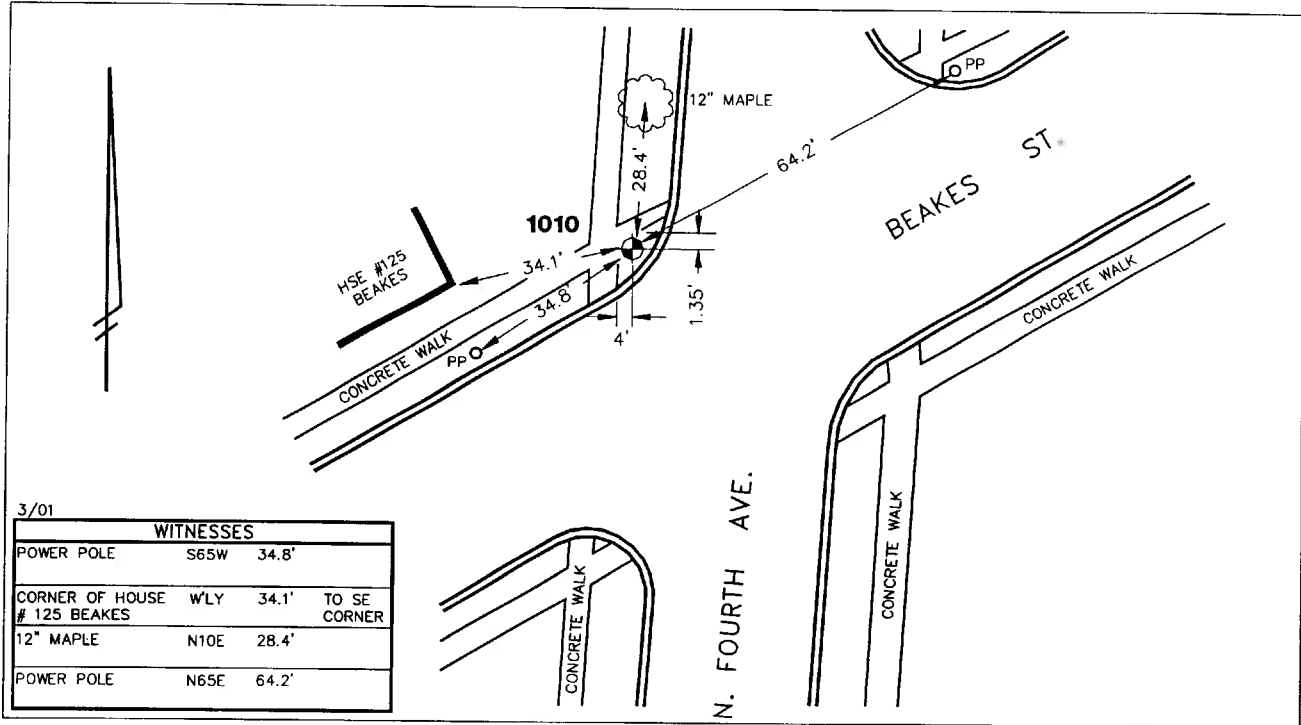


City of Ann Arbor
 Public Services Area • Project Management Unit
CONTROL STATION DATA SHEET

Approximate Location: N. Fourth Ave. and Beakes St.



3/01

WITNESSES			
POWER POLE	S65W	34.8'	
CORNER OF HOUSE # 125 BEAKES	WLY	34.1'	TO SE CORNER
12" MAPLE	N10E	28.4'	
POWER POLE	N65E	64.2'	

STATION 1010 IS LOCATED AT THE NORTHWEST CORNER OF NORTH FOURTH AVENUE AND BEAKES STREET, SAID STATION BEING IN THE NORTHEAST 1/4 OF SECTION 29, ANN ARBOR TOWNSHIP IN THE CITY OF ANN ARBOR, MICHIGAN. THE STATION IS LOCATED 4.0' EAST OF THE EAST EDGE OF THE 5.0' CONCRETE RAMP ALONG THE WEST SIDE OF NORTH FOURTH AVENUE AND 1.35' SOUTH OF THE SOUTHERLY EDGE OF THE 5.0' CONCRETE RAMP ALONG THE NORTHERLY SIDE OF BEAKES STREET. SAID STATION IS A VERTICAL CONTROL STATION AND IS DESCRIBED AS THE 1972 EDITION OF THE CITY OF ANN ARBOR BRASS DISC, SET IN CONCRETE PER DETAIL III AND IS FLUSH WITH THE GROUND. THIS STATION WAS SET BY THE CITY OF ANN ARBOR IN 1972.

Benchmark

Vertical

Accuracy	2nd Order Class II
Datum	NAVD 88
Elevation in meters	247.484
Elevation in International feet	811.95

No. 1010
 Sector: WC