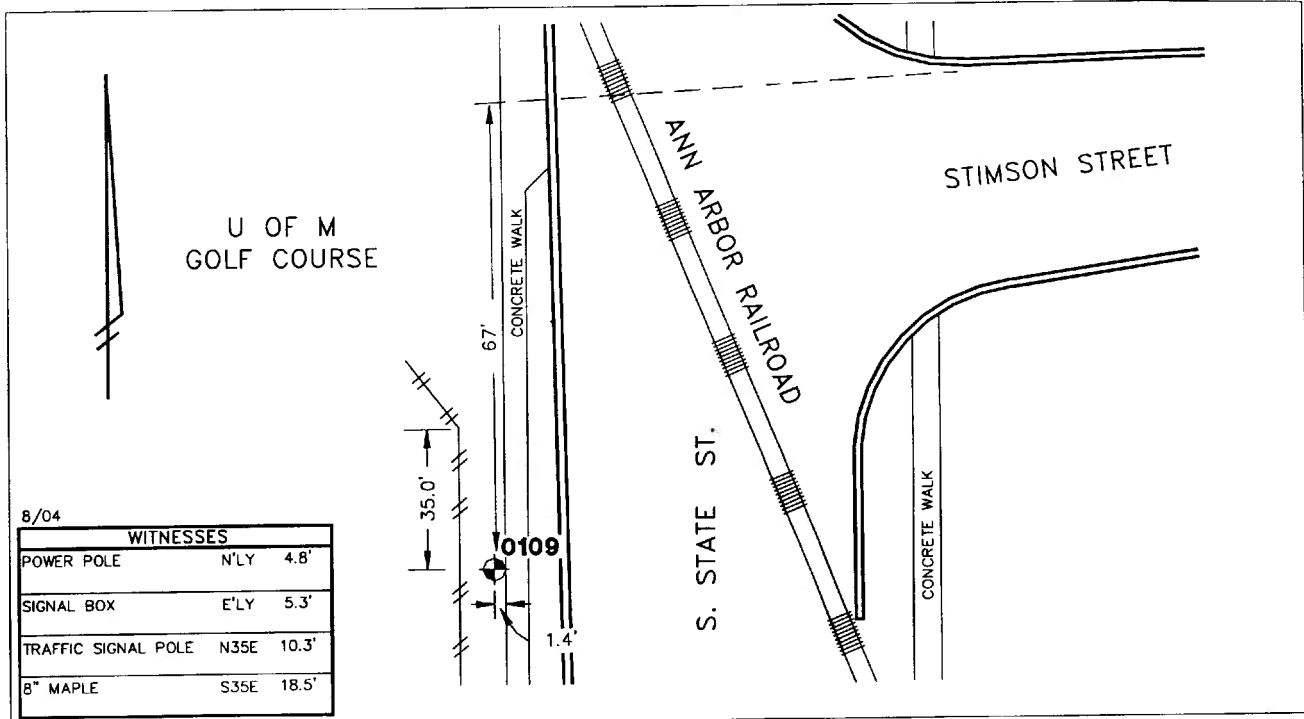


Public Services Area • Project Management Unit
CONTROL STATION DATA SHEET

Approximate Location: S. State St. and Stimson St.



STATION 0109 IS LOCATED ON THE WEST SIDE OF SOUTH STATE STREET, SOUTH OF STIMSON STREET, SAID STATION BEING IN THE SOUTHEAST 1/4 OF SECTION 32, ANN ARBOR TOWNSHIP IN THE CITY OF ANN ARBOR, MICHIGAN. THE STATION IS LOCATED 67' SOUTH OF THE NORTH BACK OF CURB ALONG STIMSON STREET EXTENDED AND 35.0' SOUTH OF THE BEND IN THE FENCE TO THE UNIVERSITY OF MICHIGAN GOLF COURSE ALONG THE WEST SIDE OF SOUTH STATE STREET AND 1.4' WEST OF THE WEST EDGE OF THE 4.0' CONCRETE WALK ALONG THE WEST SIDE OF SOUTH STATE STREET. SAID STATION IS A VERTICAL CONTROL STATION AND IS DESCRIBED AS A STAINLESS STEEL ROD WITHOUT SLEEVE AND IS ACCESSED BY A 5" LOGO CAP SET FLUSH WITH THE GROUND AND STAMPED: L 331 1985. THIS IS A NATIONAL GEODETIC SURVEY STATION, WITH THE DESIGNATION: L 331, AND PID: NE1043.

Benchmark

Vertical

Accuracy	1st Order Class II
Datum	NAVD 88
Elevation in meters	256.659
Elevation in International feet	842.06

No. 0109
 Sector: WC