

WINDEMERE SUB.

PART OF THE S.W. 1/4 OF SECTION 11, PART OF THE N.W. 1/4 OF SECTION 14 AND PART OF THE N.E. 1/4 OF SECTION 15, T.2 S., R.6 E., CITY OF ANN ARBOR, WASHTENAW COUNTY, MICHIGAN

PLAT LEGEND

ALL DIMENSIONS ARE IN FEET. ALL DIMENSIONS ON THE CURVE ARE MEASURED ALONG THE ARC.

(R) DENOTES RADIAL LOT LINE

ALL LOT MARKERS ARE 1/2" IRON RODS AND ARE 18" LONG. THE SYMBOL (o) INDICATES A CONCRETE MONUMENT. ALL MONUMENTS USED SHALL BE MADE OF SOLID IRON OR STEEL BARS AT LEAST 1/2" IN DIAMETER AND 36" LONG AND COMPLETELY ENCASED IN CONCRETE 4" IN DIAMETER.

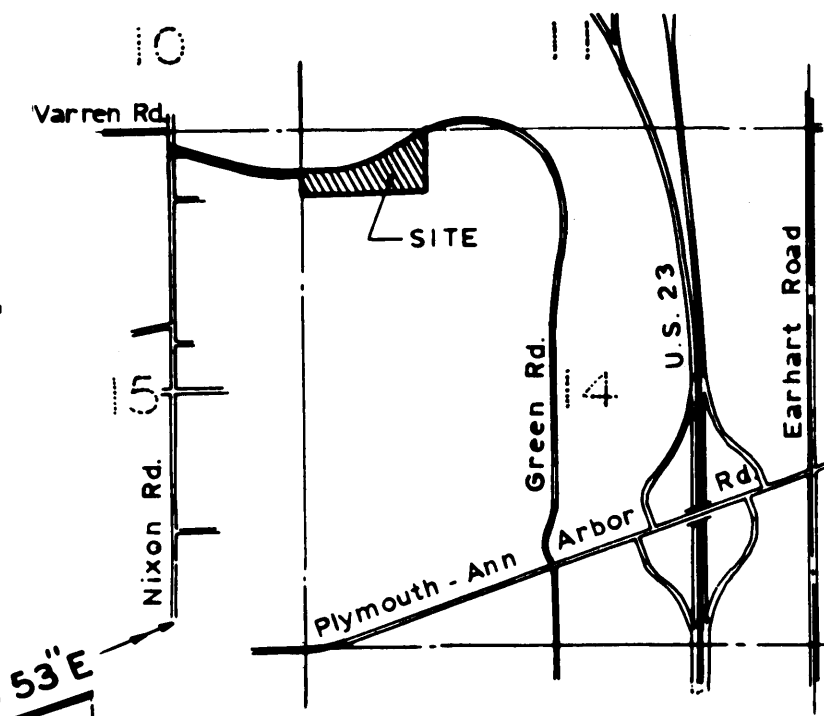
ALL BEARINGS ARE IN RELATION TO "FOREST HILLS SUB. NO. 2" AS RECORDED IN LIBER 17 OF PLATS, PAGES 12 - 14, WASHTENAW COUNTY RECORDS.

NOTE:

LOTS 9 THROUGH 13 INCLUSIVE AND SUGARBUSH PARK SHALL HAVE NO DIRECT VEHICULAR ACCESS TO GREEN ROAD.

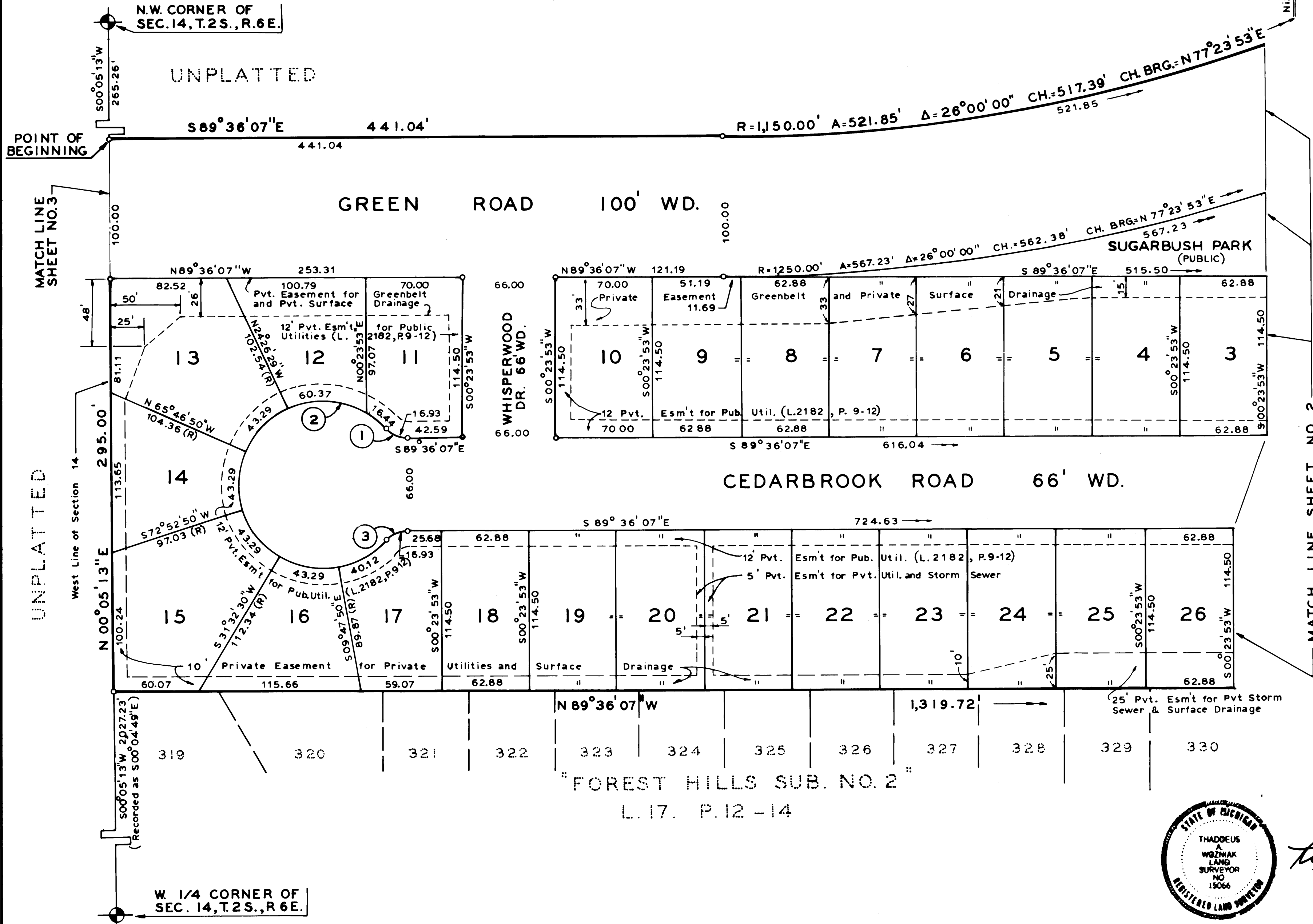
CURVE DATA

CURVE	RADIUS	ARC	CENTRAL ANGLE	CHORD	CHORD BEARING
1	20.00	16.93	48°30'33"	16.43	N. 65°20'50" W.
2	60.00	290.09	277°01'06"	79.50	N. 00°23'53" E.
3	20.00	16.93	48°30'33"	16.43	N. 66°08'36" E.



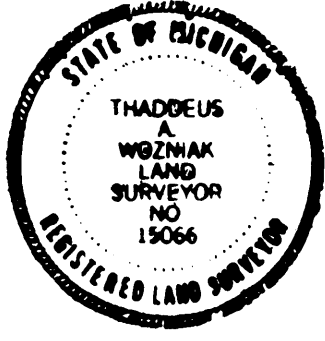
LOCATION MAP

Scale: 1"=2000'



SCALE: 1"=50'

1 OF 4
06/13/1988
PAGES 90-93



THADDEUS A. WOZNAK
REGISTERED LAND SURVEYOR

WINDEMERE SUB.

PART OF THE S.W. 1/4 OF SECTION 11, PART OF THE N.W. 1/4 OF SECTION 14 AND PART OF THE N.E. 1/4 OF SECTION 15, T.2.S., R.6E., CITY OF ANN ARBOR, WASHTENAW COUNTY, MICHIGAN

N.W. COR. OF SEC. 14, T.2.S., R.6 E.
S89°36'06"E
1251.83'

S 00°02'43"W
32.52'

UNPLATTED

PLAT LEGEND

ALL DIMENSIONS ARE IN FEET. ALL DIMENSIONS ON THE CURVE ARE MEASURED ALONG THE ARC.

(R) DENOTES RADIAL LOT LINE

ALL LOT MARKERS ARE 1/2" IRON RODS AND ARE 18" LONG. THE SYMBOL (C) INDICATES A CONCRETE MONUMENT. ALL MONUMENTS USED SHALL BE MADE OF SOLID IRON OR STEEL BARS AT LEAST 1/2" IN DIAMETER AND 36" LONG AND COMPLETELY ENCASED IN CONCRETE 4" IN DIAMETER.

ALL BEARINGS ARE IN RELATION TO "FOREST HILLS SUB. NO. 2" AS RECORDED IN LIBER 17 OF PLATS, PAGES 12 - 14, WASHTENAW COUNTY RECORDS.

CURVE DATA

CURVE	RADIUS	ARC	CENTRAL ANGLE	CHORD	CHORD BEARING
4	20.00	16.93	48°30'33"	16.43	N. 65°20'50" W
5	60.00	290.09	277°01'06"	79.50	N. 00°23'53" E.
6	20.00	16.93	48°30'33"	16.43	N. 66°08'36" E.

SURVEYOR'S CERTIFICATE

I, *Thaddeus A. Wozniak*, surveyor, certify that I have surveyed, divided and mapped the land shown on this plat, described as follows: Windemere Sub., part of the S.W. 1/4 of Section 11, part of the N.W. 1/4 of Section 14, and part of the N.E. 1/4 of Section 15, T. 2 S., R. 6 E., City of Ann Arbor, Washtenaw County, Michigan, beginning at a point, said point being distant S. 00°05'13" W. 265.26 feet along the West line of said Section 14 from the N. W. corner of said Section 14; thence from said point of beginning S. 89°36'07" E. 441.04 feet; thence 521.85 feet along the arc of a curve to the left, said curve having a radius of 1,150.00 feet, a central angle of 26°00'00", a chord length of 517.39 feet and a chord bearing of N. 77°23'53" E.; thence N. 64°23'53" E. 413.77 feet; thence S. 00°02'43" W. 32.52 feet; thence S. 00°00'07" E. 660.28 feet along the West line of "Smokler Bolgos Subdivision" as recorded in Liber 18 of Plats, Pages 59 - 61, Washtenaw County Records; thence N. 89°36'07" W. 1319.72 feet along the North line of "Forest Hills Sub. No. 2" as recorded in Liber 17 of Plats, Pages 12 - 14 Washtenaw County Records; thence N. 00°05'13" E. 295.00 feet along said West Section line; thence N. 89°36'07" W. 337.88 feet; thence 385.88 feet along the arc of a curve to the right, said curve having a radius of 1,250.00 feet, a central angle of 17°41'15", a chord length of 384.35 feet and a chord bearing of N. 80°45'29" W.; thence N. 71°54'52" W. 417.75 feet; thence 116.63 feet along the arc of a curve to the left, said curve having a radius of 1,176.24 feet, a central angle of 05°40'55", a chord length of 116.60 feet and a chord bearing of N. 74°45'20" W.; thence S. 66°11'07" W. 43.45 feet; thence N. 89°57'07" W. 83.00 feet; thence N. 00°02'53" E. 143.72 feet; thence S. 78°54'52" E. 117.56 feet; thence 155.92 feet along the arc of a curve to the right, said curve having a radius of 1,276.24 feet, a central angle of 07°00'00", a chord length of 155.82 feet and a chord bearing of S. 75°24'52" E.; thence S. 71°54'52" E. 417.75 feet; thence 355.01 feet along the arc of a curve to the left, said curve having a radius of 1,150.00 feet, a central angle of 17°41'15", a chord length of 353.60 feet and a chord bearing of S. 80°45'29" E.; thence S. 89°36'07" E. 337.34 feet to the point of beginning, consisting of 28 lots numbered 1 - 28 both inclusive, 1 outlet, 1 private park, 1 public park and containing 17.43 acres.

That I have made such survey, land-division and plat by the direction of the owners of such land.

That such plat is a correct representation of all the exterior boundaries of the land surveyed and the subdivision of it.

That the required monuments and lot markers have been located in the ground or that surety has been deposited with the municipality, as required by section 125 of the act.

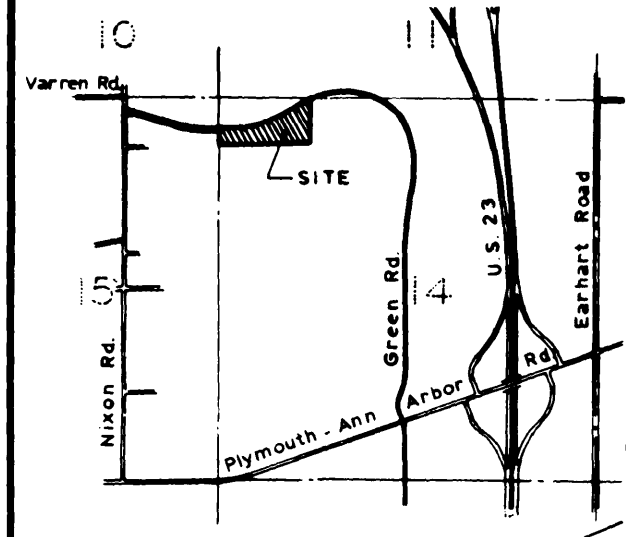
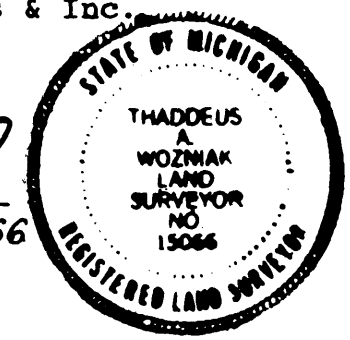
That the accuracy of survey is within the limits required by section 126 of the act.

That the bearings shown on the plat are expressed as required by section 126 (3) of the act and as explained in the legend.

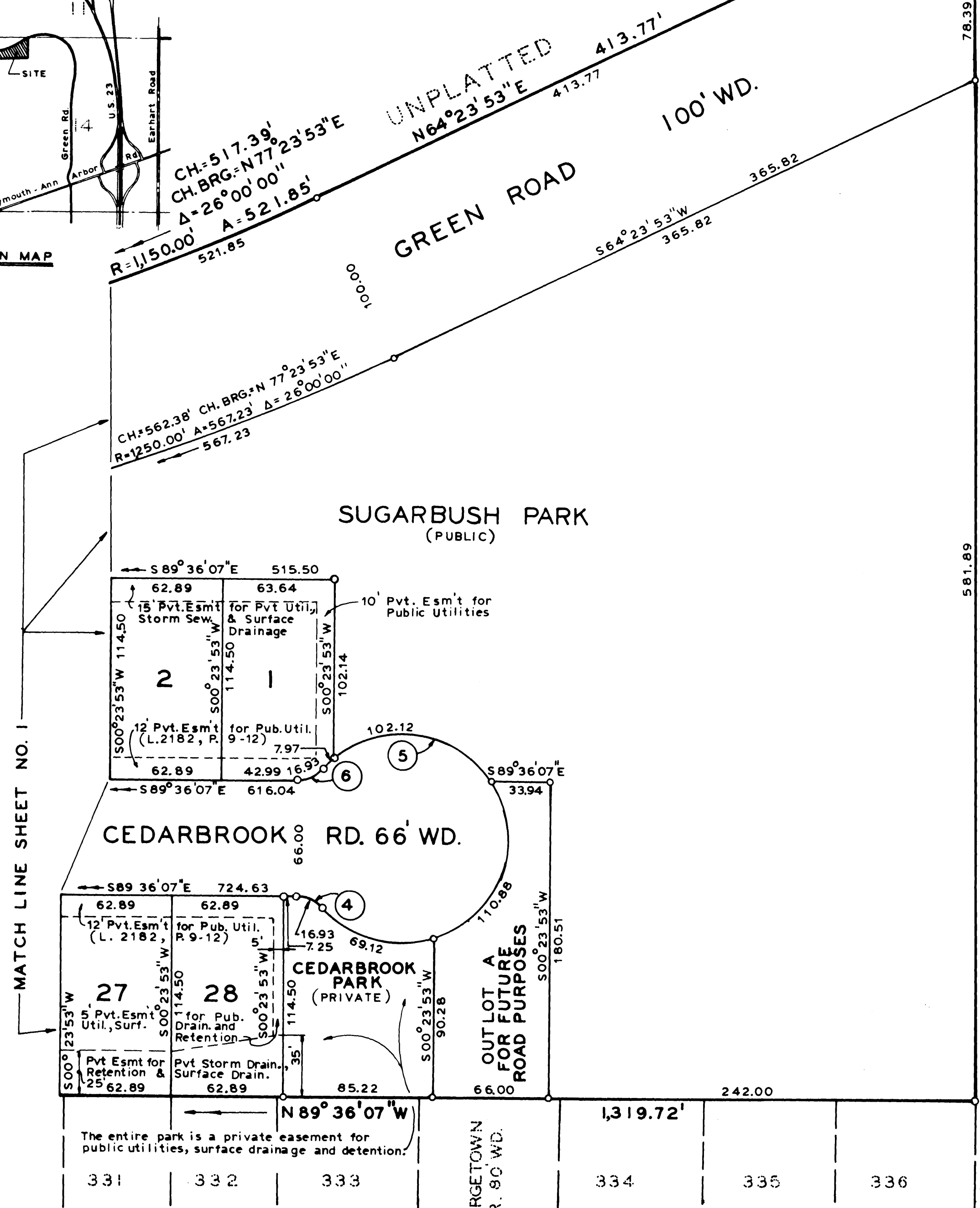
Zeimet-Wozniak & Associates & Inc.

Date: June 1, 1988

Thaddeus A. Wozniak
 Thaddeus A. Wozniak, R.L.S. 15066
 Secretary-Treasurer
 28450 Franklin Road
 Southfield, Michigan 48034



LOCATION MAP



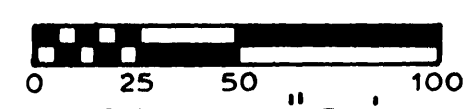
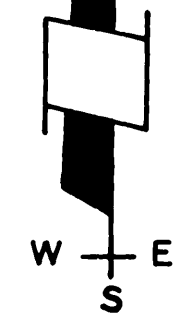
MATCH LINE SHEET NO. 1

660.28'

581.89

OUTLOT "A" S 00°00'07"E Recorded as (N 00°08'10"E)

"SMOKLER BOLGOS SUBDIVISION" L. 18 P. 59-61



SCALE: 1" = 50'

The entire park is a private easement for public utilities, surface drainage and detention.

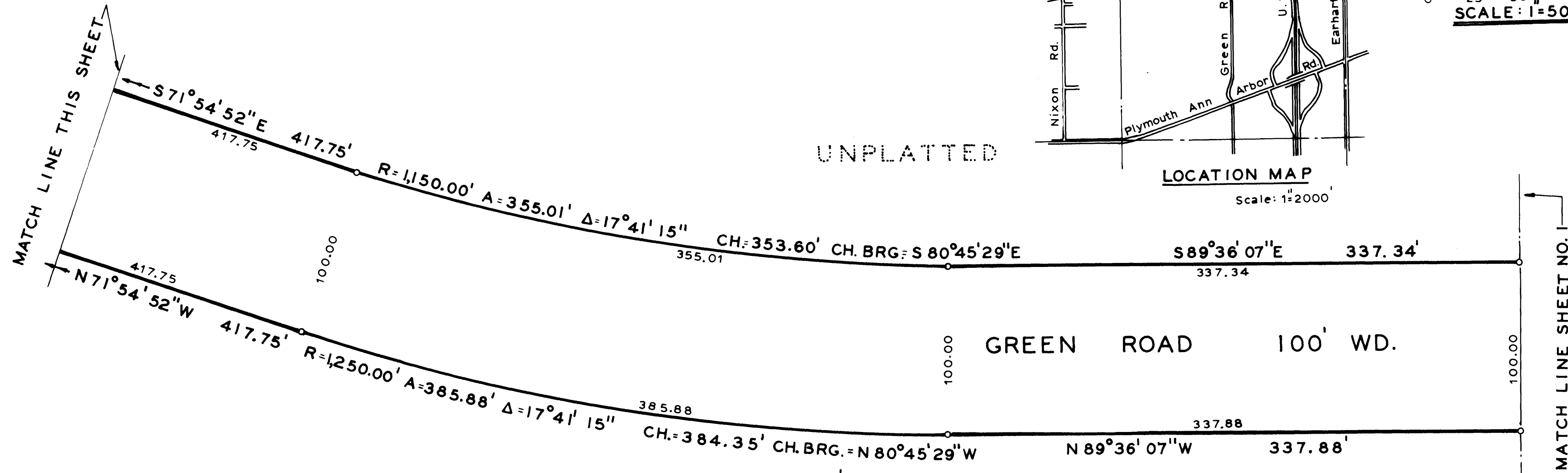
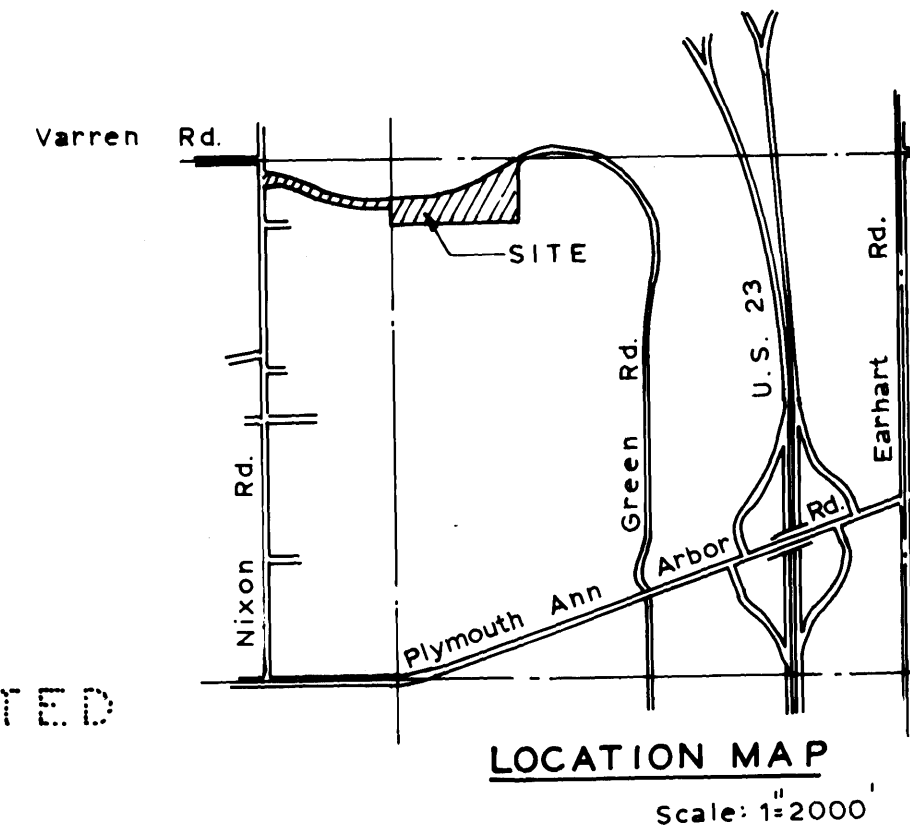
331 332 333 334 335 336

"FOREST HILLS SUB. NO. 2"

L. 17. P. 12-14

WINDEMERE SUB.

PART OF THE S.W. 1/4 OF SECTION 11, PART OF THE N.W. 1/4 OF SECTION 14 AND PART OF THE N.E. 1/4 OF SECTION 15, T.2 S., R.6 E., CITY OF ANN ARBOR, WASHTENAW COUNTY, MICHIGAN



PLAT LEGEND

ALL DIMENSIONS ARE IN FEET. ALL DIMENSIONS ON THE CURVE ARE MEASURED ALONG THE ARC.

(R) DENOTES RADIAL LOT LINE

ALL LOT MARKERS ARE 1/2" IRON RODS AND ARE 18" LONG. THE SYMBOL (o) INDICATES A CONCRETE MONUMENT. ALL MONUMENTS USED SHALL BE MADE OF SOLID IRON OR STEEL BARS AT LEAST 1/2" IN DIAMETER AND 36" LONG AND COMPLETELY ENCASED IN CONCRETE 4" IN DIAMETER.

ALL BEARINGS ARE IN RELATION TO "FOREST HILLS SUB. NO. 2" AS RECORDED IN LIBER 17 OF PLATS, PAGES 12 - 14, WASHTENAW COUNTY RECORDS.

PROPRIETOR'S CERTIFICATE

Fuller Mortgage Association, Inc., a corporation duly organized and existing under the laws of the State of Indiana by Kenneth A. Fuller, President and Maureen E. Fuller, Executive Vice President as proprietor, has caused the land embraced in this plat to be surveyed, divided, mapped and dedicated as represented on this plat and, that the streets are for the use of the public; that the public utility easements are private easements and all other easements are for the uses shown on the plat, that Outlet A is for future road purposes and that Cedarbrook Park is private and for the use of lot owners in this Windemere Sub., that Sugarbush Park is a public park and that lots 9 through 13 inclusive and Sugarbush Park shall have no direct vehicular access to Green Road.

WITNESSES

Paula R. Hastey
Paula R. Hastey

Fuller Mortgage Association, Inc.
3939 Vincennes Road
Indianapolis, Indiana 46268
Kenneth A. Fuller
Kenneth A. Fuller, President
Maureen E. Fuller
Maureen E. Fuller, Executive Vice President

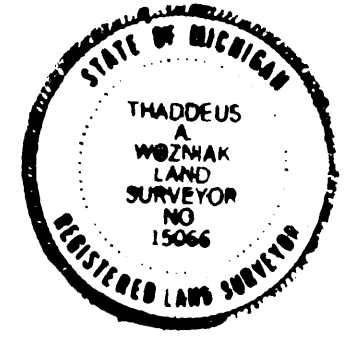
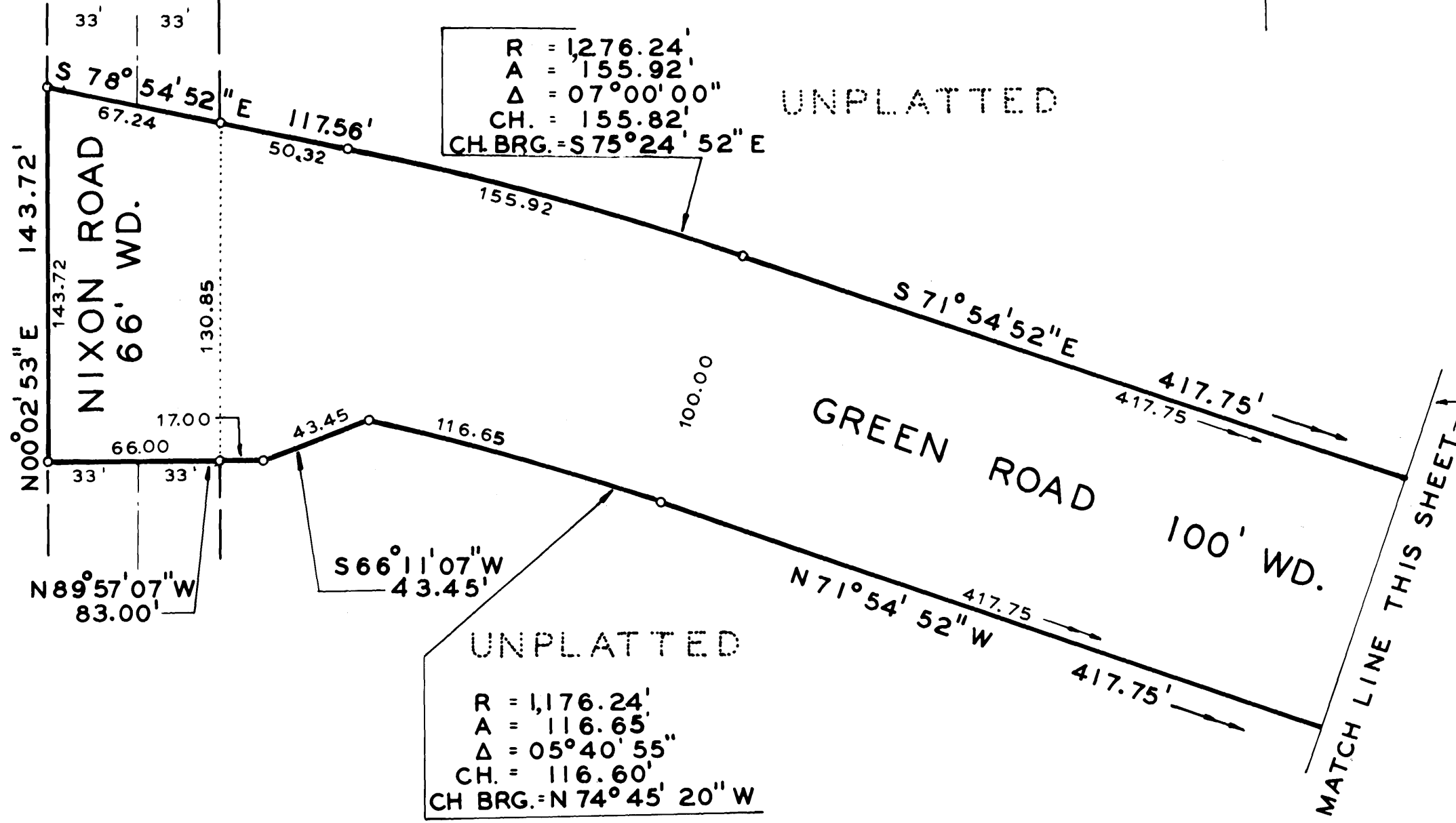
ACKNOWLEDGEMENT

State of Indiana } ss
Marion County

Personally came before me this 31st day of May, 1988, Kenneth A. Fuller, President, and Maureen E. Fuller, Executive Vice President of the above named Corporation, to me known to be the persons who executed the foregoing instrument and to me known to be such President and Vice President of said Corporation, and acknowledged that they executed the foregoing instrument as such officers as the free act and deed of said Corporation, by its authority.

My Commission Expires: October 29, 1988

Paula R. Hastey
Paula R. Hastey, Boone County
Acting in Marion County, Indiana



Thaddeus A. Wozniak
THADDEUS A. WOZNIAK

3 of 4
06/15/1988
P0169003
WINDEMERE SUB.
LIBER 25 PAGE 90-93

WINDEMERE SUB. PART OF THE S.W. 1/4 OF SECTION 11, PART OF THE N.W. 1/4 OF SECTION 14 AND PART OF THE N.E. 1/4 OF SECTION 15, T.2S., R.6E., CITY OF ANN ARBOR, WASHTENAW COUNTY, MICHIGAN

COUNTY TREASURER'S CERTIFICATE

The records in my office show no unpaid taxes or special assessment for the five years preceding 12-8-87, involving lands included in this plat.

Bruce Balliet, Chief Deputy Treasurer, Washtenaw County

DRAIN COMMISSIONER'S CERTIFICATE

Approved on February 2, 1988 as complying with Section 192 of Act 288, P.A. and the applicable rules and regulations of published by my office in the County of Washtenaw.

C. Dolores Sigal, COUNTY DRAIN COMMISSIONER

CERTIFICATE OF MUNICIPAL APPROVAL

I certify that this plat was approved by the City Council, of the City of Ann Arbor, at a meeting held February 18, 1988, and was reviewed and found to be in compliance with Act 288, P.A. 1967 as amended and that surety has been posted to insure the installation of public sewer and public water services...

Paul McCoy, Jr., Acting Clerk

COUNTY PLAT BOARD CERTIFICATE

This plat has been reviewed and is approved by the Washtenaw County Plat Board on June 9, 1988 as being in compliance with all the provisions of Act 288, P.A. 1967 and the Plat Board's applicable rules and regulations.

Robert M. Harrison, County Clerk/ Register of Deeds

Michael A. Stimpson, County Treasurer

Dillard Roy Craig, Chairman of the Board of County Commissioners and Chairman of Plat Board

RECORDING CERTIFICATE

State of Michigan) SS Washtenaw County)

This plat was received for record on the 15th day of June 1988, at 9:45 A.M. and recorded in Liber 25 of Plats on Pages 90-93.

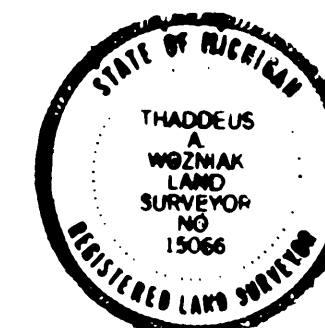
Robert M. Harrison, Register of Deeds

RECORDED PLAT BY DEPARTMENT OF COMMERCE

Richard E. Lomax, Manager Plat Section

Date December 5, 1988

Thaddeus A. Wozniak



PROPRIETOR'S CERTIFICATE

Samuel & Mancinelli, Inc., a Michigan corporation duly organized and existing under the laws of the State of Michigan by Dominic Mancinelli, President and Samuel H. Thomas Jr., Vice President as proprietors caused the land to be surveyed, divided, mapped, and dedicated as represented on this plat...

Windemere - 28 Lot Subdivision Limited Partnership by Samuel & Mancinelli Inc. a Michigan Corporation recorded Michigan Department of Commerce L. 12-88-826

Witnesses

Diane Scherer, Diane Scherer

Domenic Mancinelli, President

Barbara M. Cote, Barbara M. Cote

Samuel H. Thomas Jr., Vice President

ACKNOWLEDGEMENT

State of Michigan) SS Wayne County)

Personally came before me this First (1st) day of December 1987, Samuel & Mancinelli Inc., general partner of the above named Limited Partnership by Domenic Mancinelli, President and Samuel H. Thomas Jr., Vice President...

My commission Expires: April 13, 1988

Notary Public Barbara M. Cote, Acting in Washtenaw

PROPRIETOR'S CERTIFICATE

Windemere I Limited Partnership, a Michigan Limited Partnership, existing under the laws of the State of Michigan by Samuel H. Thomas Jr., General Partner as proprietor has caused the land to be surveyed, divided, mapped and dedicated as represented on this plat...

WITNESSES

Allan R. McPherson

Windemere I Limited Partnership a Michigan Limited Partnership File No. L 12-081 Washtenaw County

Samuel H. Thomas Jr., General Partner

ACKNOWLEDGEMENT

State of Michigan) SS Oakland County)

Personally came before me this 25th day of May, 1988, Samuel H. Thomas Jr., General Partner of the above named limited Partnership to me known to be the person who executed the foregoing instrument...

My Commission Expires: JAN. 15, 1991

PROPRIETOR'S CERTIFICATE

Michigan National Bank, a National Banking Association duly organized and existing under the laws of the United States of America by Lawrence A. Grace, Vice President and Robert J. Malek, Vice President, as proprietor caused the land to be surveyed, divided, mapped, and dedicated as represented on this plat...

WITNESSES

Sandra Gauss, Sandra Gauss

Michigan National Bank 201 S. Main Ann Arbor, Michigan 48104

Lawrence A. Grace, Vice President

Barbara J. Lasceski

Robert J. Malek, Vice President

ACKNOWLEDGEMENT

State of Michigan) SS Wayne County)

Personally came before me this Second (2nd) day of December, 1987, Lawrence A. Grace, Vice President and Robert J. Malek, Vice President, of the above named National Banking Association...

My Commission Expires: June 13, 1990

Notary Public: Barbara S. Lasceski, Acting in Washtenaw