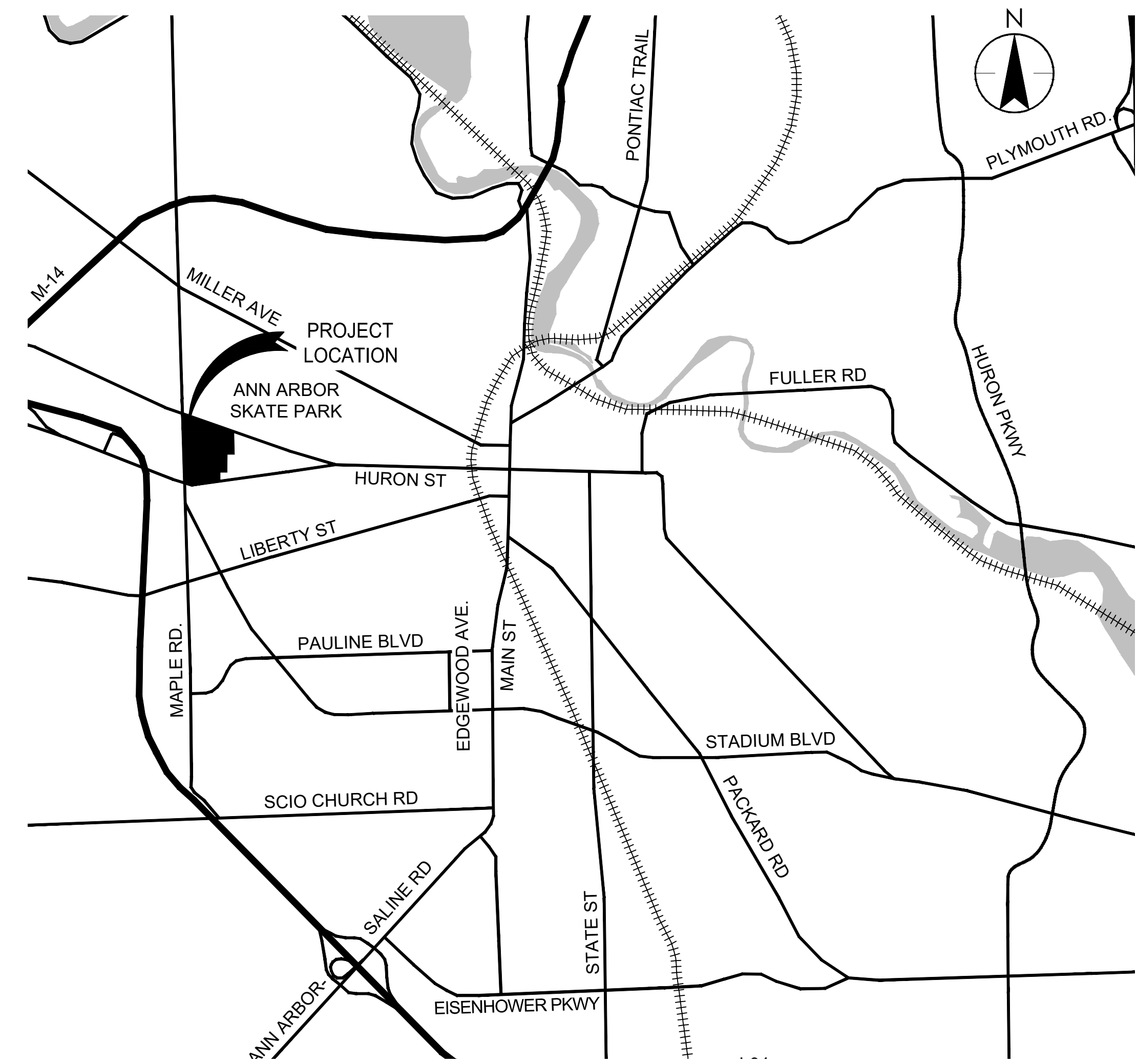




CITY OF ANN ARBOR

VETERANS MEMORIAL PARK SKATEPARK LIGHTING

ITB NO. 4707
BID SET
DECEMBER, 2021
PROJECT NUMBER: 2075154500

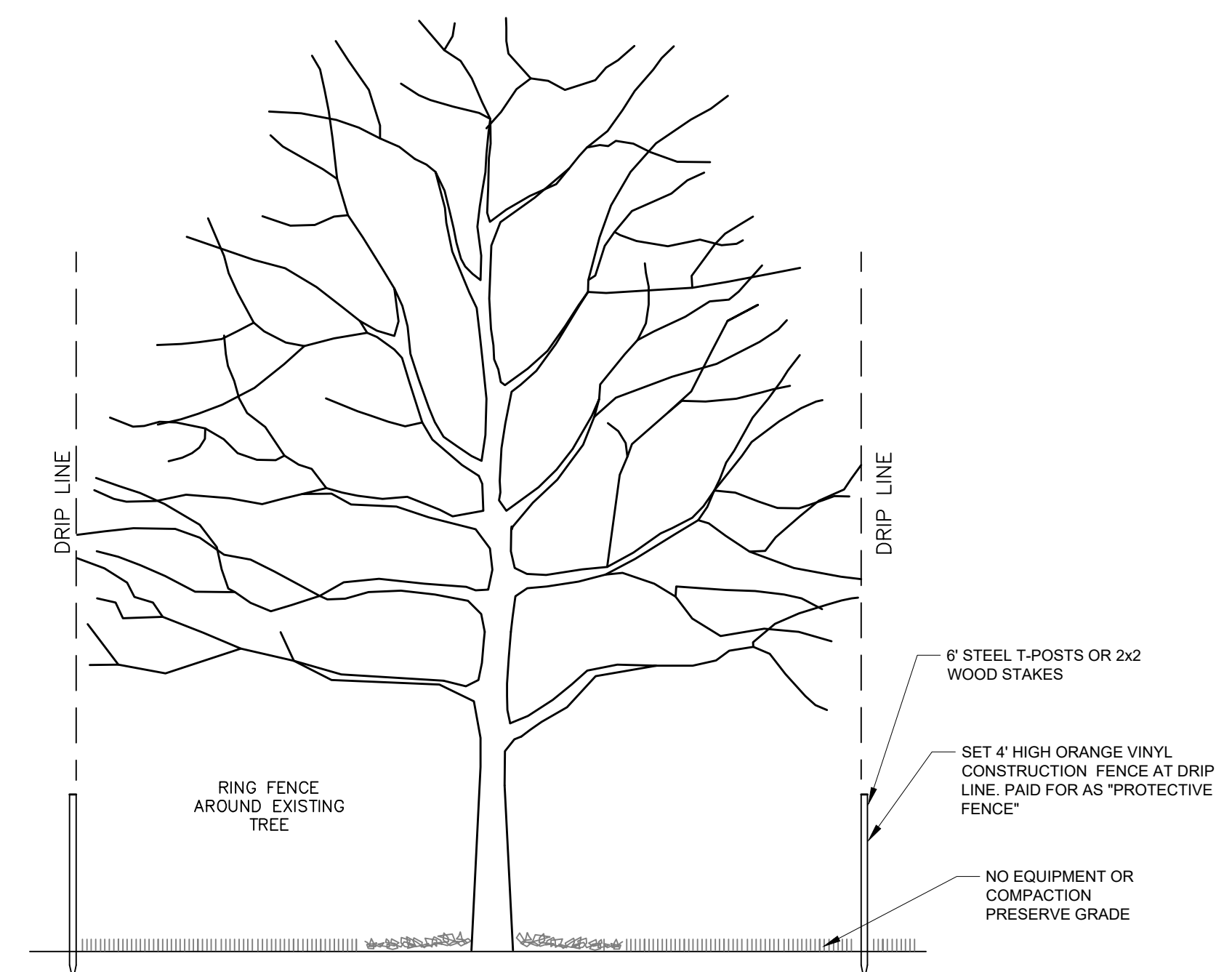


PROJECT LOCATION MAP
NOT TO SCALE

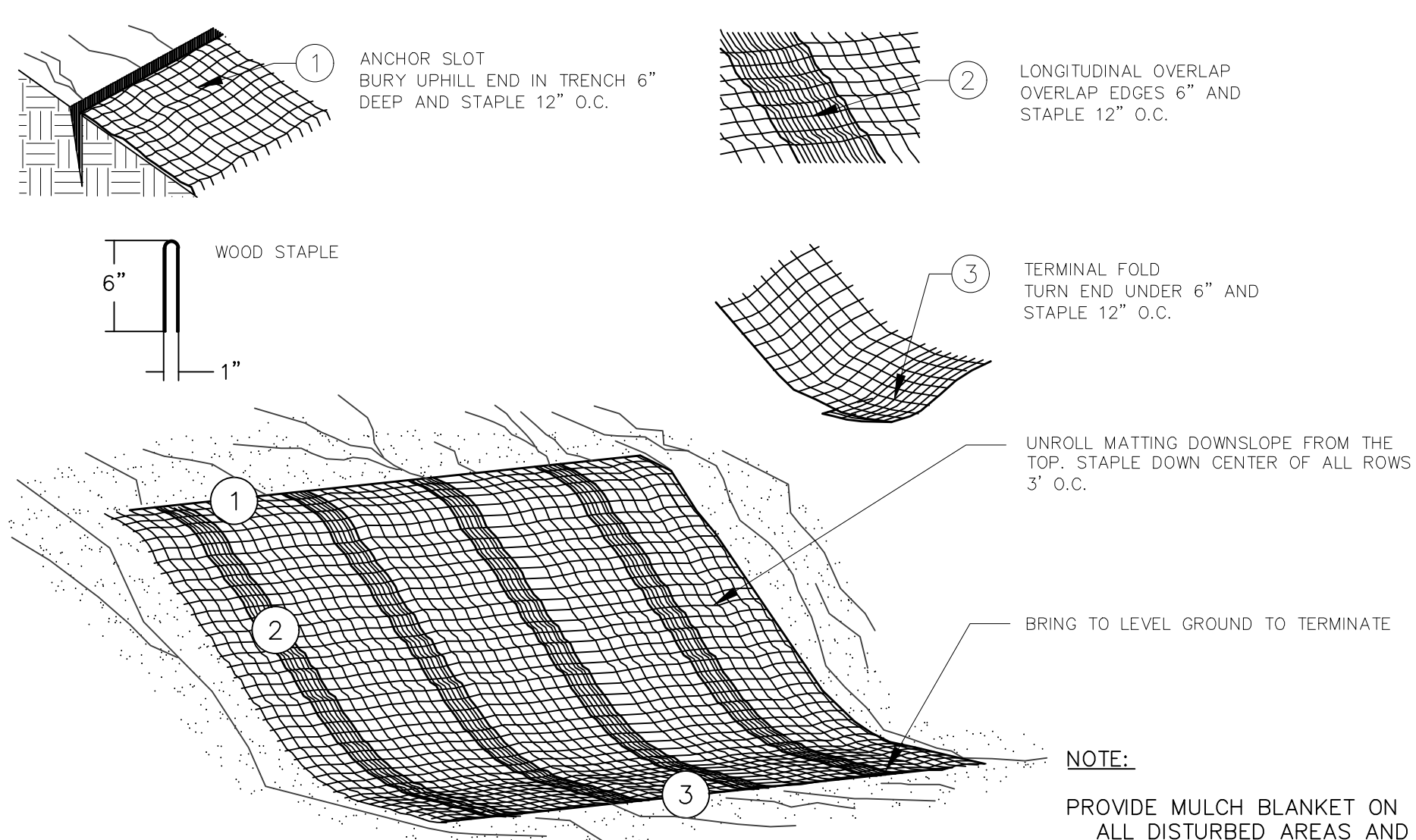
DRAWING INDEX		
Sheet Description	Sheet Number	Sheet Title
G-001	01	COVER SHEET
G-002	02	GENERAL NOTES, LEGEND, ABBREVIATIONS AND SYMBOLS
C-100	03	EXISTING SITE PLAN
E-100	04	LIGHTING LAYOUT
E-101	05	AREA LIGHTING ALTERNATE
E-102	06	FLOOD LIGHTING ALTERNATE
E-500	07	DETAILS

GENERAL NOTES

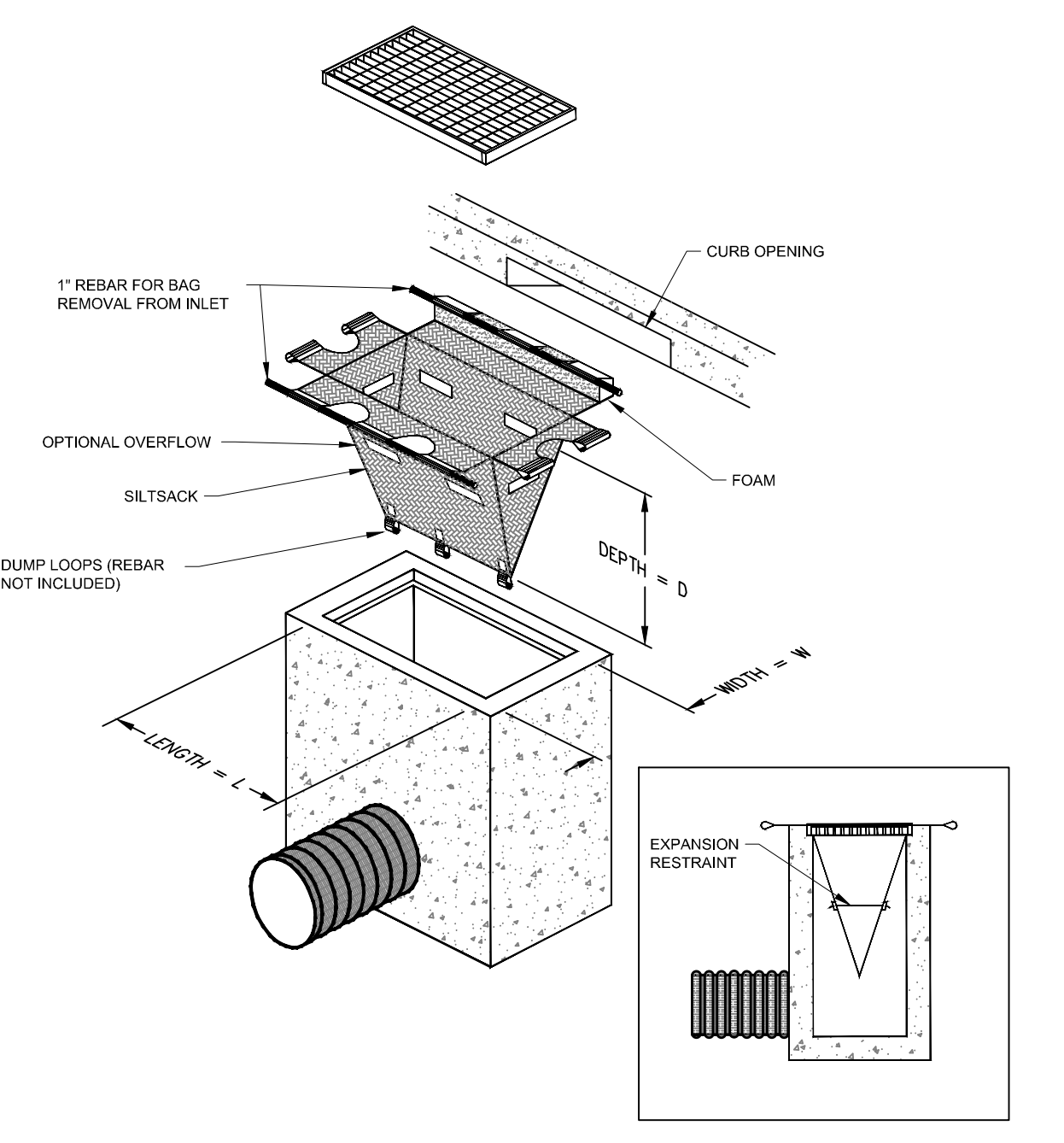
- PRE-CONSTRUCTION MEETING**
A PRE-CONSTRUCTION MEETING SHALL BE HELD PRIOR TO ANY WORK BEING PERFORMED ON THE PROJECT. THE MEETING TIME, PLACE, AND ATTENDEES SHALL BE ARRANGED BY THE PROJECT ENGINEER.
- SHOP DRAWINGS AND MATERIAL CERTIFICATES**
PRIOR TO THE START OF CONSTRUCTION THE CONTRACTOR SHALL FURNISH MATERIAL SOURCE LISTS AND CERTIFICATIONS TO THE PROJECT ENGINEER. SHOP DRAWINGS AND/OR CATALOG CUTS SHALL BE REQUIRED FOR MAJOR MATERIALS.
- PROJECT DRAWINGS**
PROJECT BASE DRAWINGS ARE PER THE VETERANS MEMORIAL PARK SKATEPARK AS-BUILT DRAWINGS.
- MISS DIG UTILITY ALERT AND FIELD LOCATION OF UTILITIES**
THREE (3) WORKING DAYS PRIOR TO BEGINNING CONSTRUCTION, IT SHALL BE THE CONTRACTOR'S RESPONSIBILITY TO CONTACT MISS DIG UTILITY PROTECTION SERVICE (811) TO VERIFY THE LOCATION OF ALL EXISTING UTILITIES. UNDERGROUND UTILITY LOCATIONS AS SHOWN ON THE PLANS WERE OBTAINED FROM UTILITY OWNERS AND WERE NOT FIELD LOCATED. THE CONTRACTOR SHALL ASSUME RESPONSIBILITY FOR THE PROTECTION OF ALL EXISTING UTILITIES DURING CONSTRUCTION. ALL UTILITIES DAMAGED DURING CONSTRUCTION SHALL BE REPAIRED WITH LIKE MATERIAL IN ACCORDANCE WITH THE UTILITY OWNER'S REQUIREMENTS. THE CONTRACTOR SHALL VERIFY THE DEPTH AND HORIZONTAL LOCATION OF ALL EXISTING UTILITIES. THE EXACT LOCATION OF EXISTING UTILITIES SHALL BE DETERMINED BY HAND DIGGING.
- UTILITY INFORMATION**
PRIVATE UTILITY INFORMATION WITHIN VETERANS MEMORIAL PARK IS NOT READILY AVAILABLE. BEST AVAILABLE INFORMATION IS DEPICTED ON THE DRAWINGS. CONTRACTOR IS RESPONSIBLE FOR HIRING A PRIVATE LOCATING COMPANY TO LOCATE ALL EXISTING PRIVATE UTILITIES PRIOR TO ANY EXCAVATION INCLUDING BUT NOT LIMITED TO UNDERGROUND ELECTRICAL, IRRIGATION, SANITARY SEWER, STORM SEWER, WATER MAIN AND GAS MAINS. PUBLIC UTILITY INFORMATION IS DELINEATED IN ACCORDANCE WITH LOCATIONS PROVIDED BY UTILITY OWNERS. THE DESIGN ENGINEER IS NOT RESPONSIBLE FOR THE ACCURACY OF THE INFORMATION OR THE LOCATION AT WHICH THESE SERVICES EXIST. DIFFERING FIELD CONDITIONS SHALL BE BROUGHT TO THE ATTENTION OF THE ENGINEER. THE LOCATION OF ALL PUBLIC UTILITIES SHOWN ON THE PLANS ARE TAKEN FROM THE BEST AVAILABLE DATA. THE OWNER WILL NOT BE RESPONSIBLE FOR ANY OMISSION OR VARIATIONS FROM THE LOCATIONS SHOWN. CONSTRUCTION OPERATIONS SHALL BE CONDUCTED IN A MANNER AS TO INSURE THAT THOSE UTILITIES NOT REQUIRING RELOCATION WILL NOT BE DISTURBED. REPAIRS OF UTILITIES DAMAGED DURING CONSTRUCTION BY THE CONTRACTOR SHALL BE THE FULL RESPONSIBILITY OF THE CONTRACTOR IN ACCORDANCE WITH THE AFFECTED UTILITY OWNERS REQUIREMENTS.
- STORMWATER DRAINAGE DURING CONSTRUCTION**
THE CONTRACTOR SHALL MAINTAIN DRAINAGE DURING CONSTRUCTION AND SHALL NOT OBSTRUCT THE EXISTING STORM WATER FACILITIES, INCLUDING THE RAIN GARDENS AROUND THE SKATEPARK. THE CONTRACTOR SHALL TAKE ALL NECESSARY MEASURES TO PROTECT ALL STORM SEWER FACILITIES SUCH AS CATCH BASINS, CULVERTS AND HEADWALLS DURING CONSTRUCTION. CULVERTS AND CATCH BASINS CONTAMINATED DURING CONSTRUCTION SHALL BE CLEANED.
- EXISTING UTILITIES**
THE CONTRACTOR SHALL MAINTAIN ALL EXISTING SANITARY SEWER, WATER OR STORM SEWER SERVICE CONNECTIONS IN SERVICE THROUGHOUT THE CONSTRUCTION PERIOD. THE CONTRACTOR SHALL PROVIDE OR ARRANGE FOR TEMPORARY SUPPORT OF GAS MAIN AND UTILITY POLES WHERE NEEDED. ALL STORM SEWERS DAMAGED OR REMOVED OR RELOCATED BY THE CONTRACTOR SHALL BE REPLACED WITH THE SAME SIZE AND QUALITY PIPE BY THE CONTRACTOR AT NO ADDITIONAL COST TO THE PROJECT. ALL UTILITIES UNDERMINED BY THE EXCAVATION SHALL HAVE COMPACTED CLASS II SAND BACKFILL PLACED UNDER THEM.
- UTILITY COORDINATION**
COORDINATION OF RELOCATED UTILITIES WILL BE PERFORMED AND COMPLETED PRIOR TO INSTALLATION OF THE PATH. FOR UTILITIES THAT NEED TO BE RELOCATED DURING CONSTRUCTION, THE CONTRACTOR WILL COORDINATE WITH THE RESPECTIVE UTILITY OWNER TO COMPLETE THIS TASK. THE COST TO RELOCATE UTILITIES WILL BE PAID FOR BY OTHERS. NO ADDITIONAL COST FOR COORDINATION EFFORTS INCURRED BY THE CONTRACTOR WILL BE PROVIDED.
- PROTECTION OF HAZARDOUS AREAS / OPEN EXCAVATIONS**
EXCAVATIONS AND HAZARDOUS AREAS SHALL BE PROTECTED BY ADA COMPLIANT BARRICADES. IF THE PARK PATHWAYS ARE CLOSED, THE CONTRACTOR SHALL INSTALL ADVANCED SIGNAGE AND BARRICADES AS NECESSARY TO SAFELY ROUTE PEDESTRIAN TRAFFIC. THE PLACEMENT OF PROTECTIVE FENCING MEETING MIOSHA STANDARDS IS REQUIRED AROUND ALL OPEN EXCAVATIONS.
- DISPOSAL OF EXCESS EXCAVATED MATERIAL**
ALL EXCESS EXCAVATED MATERIALS SHALL BE DISPOSED OF BY THE CONTRACTOR AT A LOCATION PROVIDED BY THE CONTRACTOR.
- SALVAGED MATERIALS**
SALVAGEABLE MATERIALS SHALL BECOME THE PROPERTY OF THE OWNER, AND SHALL BE STORED AS DIRECTED BY THE ENGINEER. ALL SIGNS RELOCATED BY CONSTRUCTION SHALL BE REPLACED. SIGNS AND POSTS REMOVED SHALL BE STOCKPILED AT A LOCATION SPECIFIED BY THE ENGINEER.
- TREE PROTECTION**
PRIOR TO ANY EXCAVATION, ALL TREES TO REMAIN SHALL BE PROTECTED USING PROTECTIVE TREE FENCE. THE FENCING SHALL BE PLACED AT THE DRIP LINE AROUND THE ENTIRE CIRCUMFERENCE.
- TREE REMOVAL**
TREE REMOVALS ARE NOT PERMITTED WITHOUT PRIOR APPROVAL FROM THE OWNER AND ENGINEER.
- COVERS AND CASTINGS**
ALL FINAL ELEVATIONS OF MANHOLE CASTINGS, HYDRANTS, VALVES AND VALVE BOXES SHALL BE DETERMINED BY THE ENGINEER IN THE FIELD. CASTINGS DAMAGED BY THE CONTRACTOR SHALL BE REPLACED AT THE EXPENSE OF THE CONTRACTOR, WITH MATERIALS APPROVED BY THE ENGINEER.



TREE PROTECTION DETAIL



MULCH BLANKET DETAIL

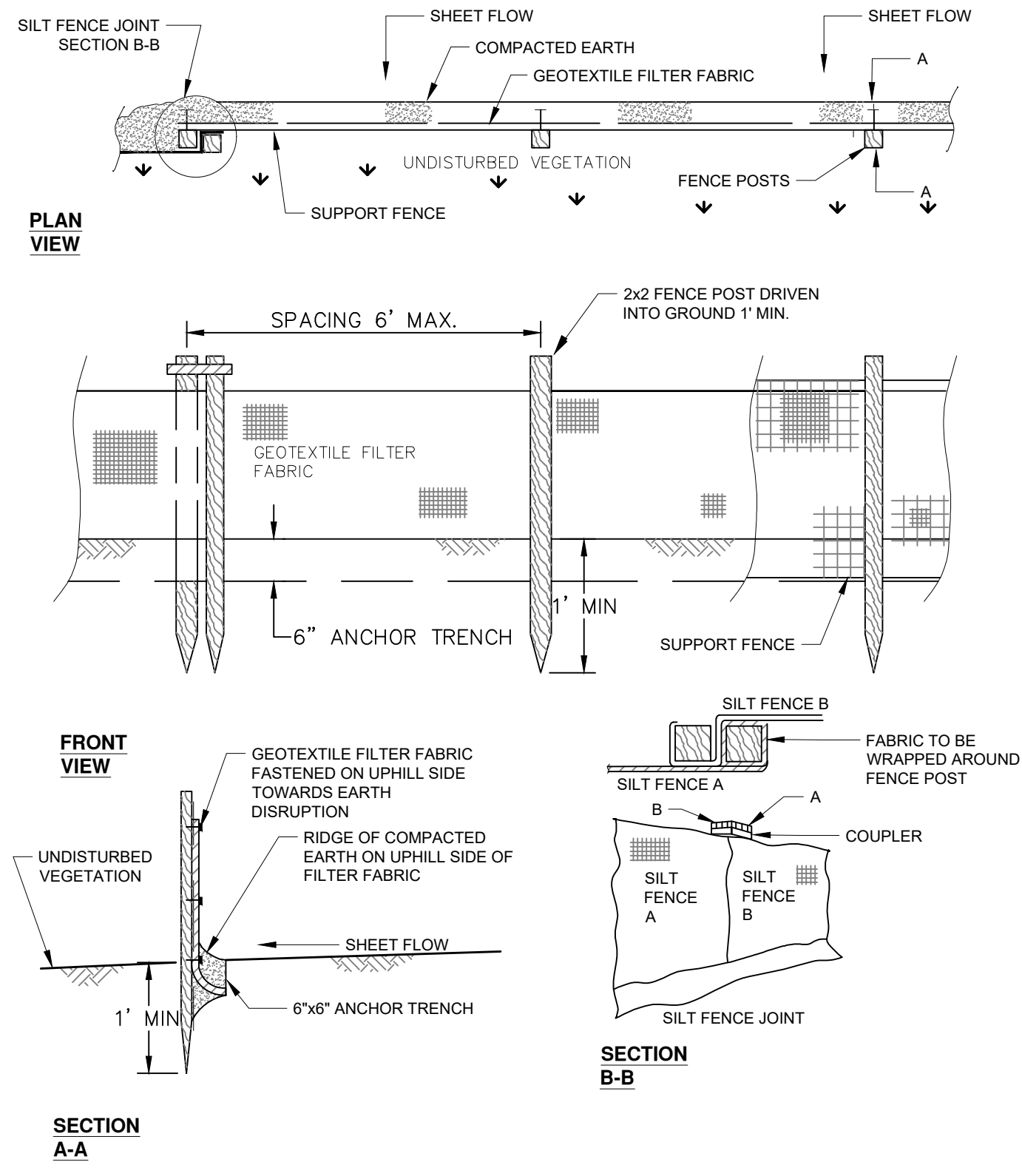


SILTSACK DETAIL

PROPERTIES	REQUIRED VALUE	TEST METHOD
GRAB TENSILE STRENGTH	ASTM D-4632	300 LBS
GRAB TENSILE ELONGATION	ASTM D-4632	20%
PUNCTURE	ASTM D-4633	120 LBS
MULLEN BURST	ASTM D-3786	800 PSI
TRAPEZOID TEAR	ASTM D-4533	120 LBS
UV RESISTANCE	ASTM D-4355	90%
APPARENT OPENING SIZE	ASTM D-4751	40 US SIEVE
FLOW RATE	ASTM D-4491	40 GAL/MIN/50 FT
PERMITTIVITY	ASTM D-4491	0.55 SEC-1

PROPERTIES	REQUIRED VALUE	TEST METHOD
GRAB TENSILE STRENGTH	ASTM D-4632	265 LBS
GRAB TENSILE ELONGATION	ASTM D-4632	20%
PUNCTURE	ASTM D-4633	135 LBS
MULLEN BURST	ASTM D-3786	420 PSI
TRAPEZOID TEAR	ASTM D-4533	45 LBS
UV RESISTANCE	ASTM D-4355	90%
APPARENT OPENING SIZE	ASTM D-4751	20 US SIEVE
FLOW RATE	ASTM D-4491	200 GAL/MIN/50 FT
PERMITTIVITY	ASTM D-4491	1.5 SEC-1

LEGEND			
SYMBOL	DESCRIPTION	SYMBOL	DESCRIPTION
835	EXIST. CONTOUR	---	EXIST. CURB AND GUTTER
835	PROP. CONTOUR	---	PROP. CURB AND GUTTER
x 854.6	EXIST. SPOT ELEVATION	---	CENTERLINE OF DITCH
x 854.6	PROP. SPOT ELEVATION	---	EDGE OF WATER
T/C	TOP OF CURB	---	EDGE OF WETLAND
T/P	TOP OF PAVEMENT	---	EXISTING FENCE
G	GUTTER	---	PROPOSED FENCE
12"ST	EXIST. STORM SEWER	---	TREE PROTECTION FENCE
12"ST	PROP. STORM SEWER	---	SILT FENCE
⊙	EXIST. MANHOLE	---	CLEARING LIMITS
⊙	PROP. MANHOLE	---	EXIST. GUARDRAIL
---	PROP. EDGE DRAIN	---	PROP. GUARDRAIL
---	EXIST. CATCH BASIN/INLET	---	PROPERTY LINE
---	PROP. CATCH BASIN/INLET	---	CENTERLINE
---	END SECTION/HEAD WALL	---	EXIST. SIGN
---	CULVERT	---	PROP. SIGN
---	INLET FILTER	---	ENCLOSED TRASH AREA
• C.O.	PROP. CLEANOUT	---	DRAINAGE DIRECTION
8" S	EXIST. SANITARY SEWER	---	SIDEWALK RAMP
8" S	PROP. SANITARY SEWER	---	BARRIER FREE PARKING
8" W	EXIST. WATER MAIN	F.F.	FINISH FLOOR ELEV.
8" W	PROP. WATER MAIN	F.G.	FINISH GRADE ELEV.
---	EXIST. HYDRANT	B.F.	BASEMENT FLOOR ELEV.
---	PROP. HYDRANT	G.F.	GARAGE FLOOR ELEV.
⊕	EXIST. POST INDICATOR VALVE	---	SECTION CORNER
---	EXIST. GATE VALVE AND BOX/STOP BOX	---	CONTROL POINT
---	PROP. CURB STOP BOX	---	FOUND IRON PIPE
---	EXIST. GATE VALVE AND WELL	⊙ S	SET IRON PIPE
---	PROP. GATE VALVE AND WELL	⊙	FOUND CONCRETE MONUMENT
---	PROP. REDUCER	⊙ S	SET CONCRETE MONUMENT
---	PROP. END CAP	× F	FOUND PK NAIL
---	EXIST. OVERHEAD ELECTRIC	× S	SET PK NAIL
---	PROP. OVERHEAD ELECTRIC	---	FOUND LEADED CHISEL HOLE
---	EXIST. UNDERGROUND ELECTRIC	---	SET LEADED CHISEL HOLE
---	PROP. UNDERGROUND ELECTRIC	⊙ F-RR	FOUND REROD
---	EXIST. LIGHT POLE	---	APPROX. LOCATION OF SOIL BORING
---	PROP. LIGHT POLE	---	APPROX. LOCATION OF MONITORING WELL
⊙ U.P.	EXIST. UTILITY POLE	---	APPROX. LOCATION OF PENETRATION TEST
---	GUY WIRE	---	EXIST. DECIDUOUS TREE
---	EXIST. ELECTRIC TRANSFORMER	---	EXIST. EVERGREEN TREE
---	PROP. ELECTRIC TRANSFORMER	---	EXIST. SHRUB
---	EXIST. OVERHEAD TELEPHONE	---	EXIST. TREE OR BRUSH LIMIT
---	PROP. OVERHEAD TELEPHONE	---	TREE TO BE REMOVED
---	EXIST. UNDERGROUND TELEPHONE	---	REMOVE AND REPLACE
---	PROP. UNDERGROUND TELEPHONE	---	BITUMINOUS PAVEMENT
---	EXIST. GAS	---	GRAVEL PAVEMENT
---	PROP. GAS	---	CONCRETE PAVEMENT
---	EXIST. MAILBOX	---	BRICK PAVERS
---	EXIST. GAS RISER	---	
---	EXIST. TELEPHONE RISER	---	
---	COMPACTED SAND BACKFILL	---	



SILT FENCE SD-EC-3



Stantec Consulting Michigan Inc.
3754 Ranchero Drive
Ann Arbor MI 48108-2771
Tel: (734) 761-1010
www.stantec.com

Copyright Reserved
The Contractor shall verify and be responsible for all dimensions. DO NOT scale the drawing - any errors or omissions shall be reported to Stantec without delay. The Copyrights to all designs and drawings are the property of Stantec. Reproduction or use for any purpose other than that authorized by Stantec is forbidden.

Consultant
Notes

B	BID SET	CJE	MDP	2021.12.14
A	PRELIMINARY PLAN	CJE	MDP	2021.11.15
Issued		By	Acqd	YYYY.MM.DD
File Name:	154500_G-002	BWA	AMS	MDP
		Dwn.	Dgrn.	Chkd.
				YYYY.MM.DD

Permit/Seal

Client/Project Logo

NOTE:
THE LOCATIONS AND ELEVATIONS OF EXISTING UNDERGROUND UTILITIES AS SHOWN ON THIS DRAWING ARE ONLY APPROXIMATE. NO GUARANTEE IS EITHER EXPRESSED OR IMPLIED AS TO THE CORRECTNESS OR ACCURACY THEREOF. THE CONTRACTOR SHALL BE RESPONSIBLE FOR CONTACTING MISS DIG PRIOR TO CONSTRUCTION.

Client/Project
CITY OF ANN ARBOR
VETERANS MEMORIAL PARK
SKATEPARK LIGHTING
ITB NO. 4707
Ann Arbor, Michigan
Title

GENERAL NOTES, LEGEND,
ABBREVIATIONS AND SYMBOLS

Project No.	Scale
2075154500	
Revision Sheet	Drawing No.
0	2 of 7

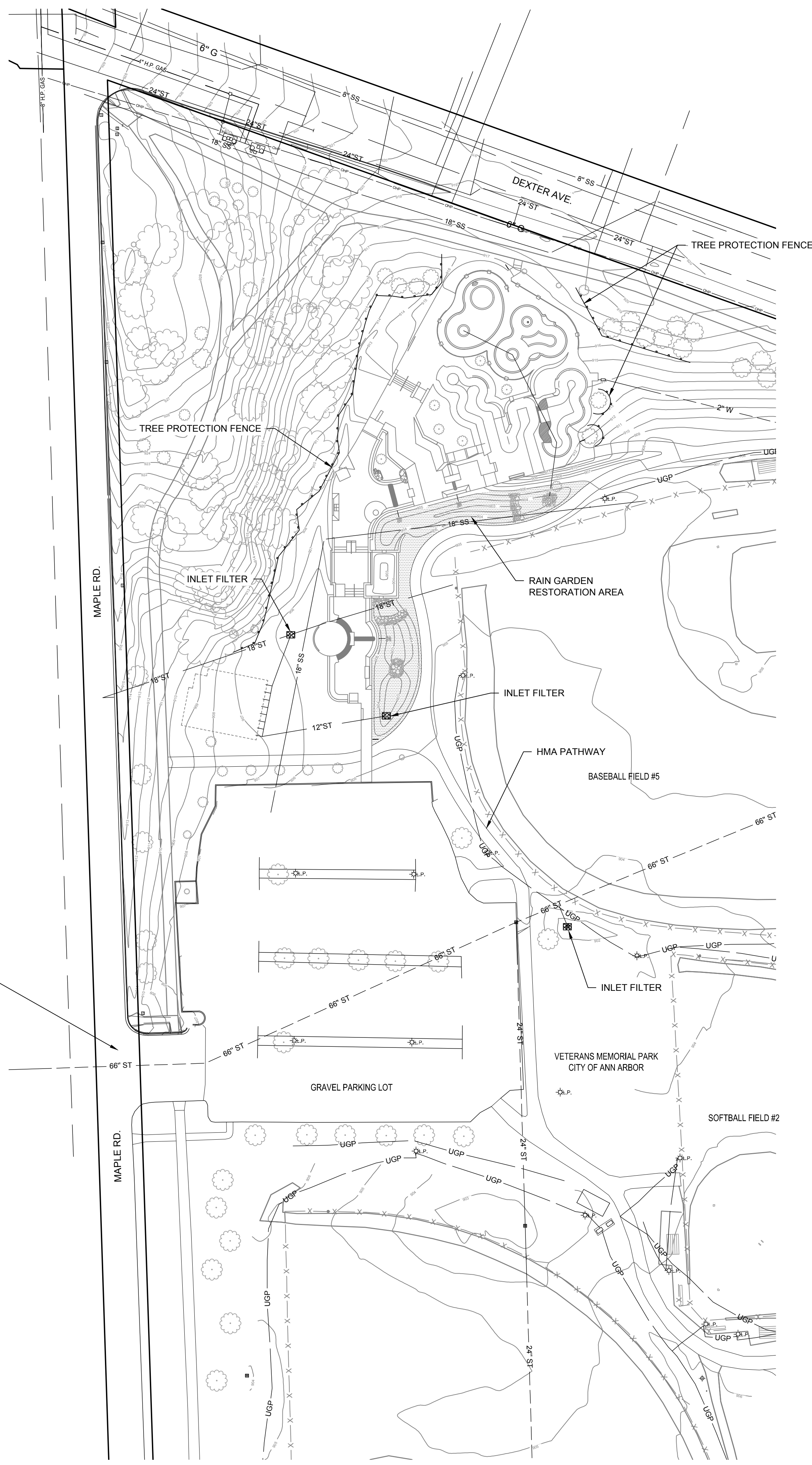
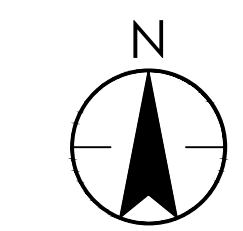
G-002

Copyright Reserved

The Contractor shall verify and be responsible for all dimensions. DO NOT scale the drawing - any errors or omissions shall be reported to Stantec without delay.
The Copyrights to all designs and drawings are the property of Stantec. Reproduction or use for any purpose other than that authorized by Stantec is forbidden.

Consultant

Notes



TRAFFIC SIGNAL AT MAPLE ROAD INTERSECTION IS POWERED FROM PARK SWITCHBOARD. COORDINATE WITH CITY OF ANN ARBOR SIGNS AND SIGNALS DURING ANY REQUIRED POWER SHUTDOWN.

NOTES:

- HMA AND CONCRETE PATHWAY CROSSINGS**
ALL CONDUIT CROSSINGS OF EXISTING HMA PATHWAY OR CONCRETE PATHWAY SHALL BE BORED INTO PLACE IN ACCORDANCE WITH THE 2020 MDOT STANDARD SPECIFICATIONS FOR CONSTRUCTION. IF ANY PATHWAY IS DAMAGED DURING CONDUIT INSTALLATION, THE CONTRACTOR SHALL SAWCUT, REMOVE AND REPLACE THE PATHWAY IN ACCORDANCE WITH MDOT STANDARDS. ALL HMA AND CONCRETE CROSS SECTIONS SHALL AT A MINIMUM MATCH EXISTING PAVEMENT.
- RESTORATION OF GRAVEL PARKING LOT**
GRAVEL PARKING LOT CONTAMINATED BY CONSTRUCTION SHALL RE-GRAVELED WITH 23A CRUSHED LIMESTONE TO MICHIGAN DEPARTMENT OF TRANSPORTATION 2012 STANDARD SPECIFICATIONS FOR CONSTRUCTION.
- RAIN GARDEN RESTORATION**
ALL DISTURBANCE WITHIN THE IDENTIFIED RAIN GARDEN AREAS SHALL BE WITH THE APPROVED RAIN GARDEN SEED MIX AS SPECIFIED. CONTRACTOR SHALL TAKE CARE TO MINIMIZE DISTURBANCE WITHIN THE SENSITIVE AREAS.
- EQUIPMENT ACCESS**
NO EQUIPMENT SHALL BE DRIVEN ON THE SKATEPARK WITHOUT PRIOR APPROVAL FROM THE ENGINEER.
- TREE TRIMMING**
TREE TRIMMING MAY BE REQUIRED FOR LIGHT POLE INSTALLATION ALONG THE WESTERN SIDE OF THE SKATEPARK. ALL REQUESTS FOR TREE TRIMMING SHALL BE SUBMITTED TO THE OWNER AND ENGINEER 28 DAYS PRIOR TO POLE INSTALLATION FOR REVIEW.

SOIL EROSION CONTROL NOTES

- APPLY FOR AND OBTAIN A SOIL EROSION AND SEDIMENTATION CONTROL PERMIT FROM THE CITY OF ANN ARBOR.
- AREA OF PROPOSED DISTURBANCE = 0.35 ACRE
- THE CONTRACTOR SHALL IMPLEMENT AND MAINTAIN THE SOIL EROSION CONTROL MEASURES AS SHOWN ON THE PLANS AND AS DIRECTED BY THE ENGINEER AT ALL TIMES DURING CONSTRUCTION. MODIFICATIONS OR ADDITIONS TO THE SOIL EROSION CONTROL MEASURES DUE TO CONSTRUCTION OR CHANGED CONDITIONS SHALL BE AS DIRECTED AND APPROVED BY THE ENGINEER.
- ALL SOIL EROSION AND SEDIMENTATION CONTROL WORK SHALL CONFORM TO THE PERMIT REQUIREMENTS OF THE CITY OF ANN ARBOR, CITY ORDINANCE CHAPTER 63, CITY OF ANN ARBOR STANDARDS DIVISION VII, THE LAWS OF THE STATE OF MICHIGAN, AND THE REQUIREMENTS OF THE CONTRACT DOCUMENTS.
- DAILY, OR AFTER ANY STORM EVENT, INSPECTIONS OF EROSION CONTROL MEASURES SHALL BE MADE BY THE CONTRACTOR. PERIODIC INSPECTIONS MAY BE MADE BY THE ENGINEER TO DETERMINE THE EFFECTIVENESS OF EROSION AND SEDIMENTATION CONTROL MEASURES. ANY NECESSARY CORRECTIONS SHALL BE MADE WITHOUT DELAY, AND WITHOUT ADDITIONAL COST TO THE CITY OF ANN ARBOR.
- EROSION AND SEDIMENTATION FROM WORK ON THE SITE SHALL BE CONTAINED ON THE SITE AND NOT BE ALLOWED TO COLLECT ON ANY OFF-SITE AREAS, ROADWAYS OR WATERWAYS.
- ALL MUD/SOIL TRACKED ONTO ROADWAYS FROM THE SITE DUE TO CONSTRUCTION, SHALL BE PROMPTLY REMOVED BY THE CONTRACTOR. OPERATE A VACUUM-TYPE STREET SWEEPER, AT NO ADDITIONAL COST TO THE CITY OF ANN ARBOR, WITHIN FOUR (4) HOURS OF BEING SO ORDERED.
- RESTORATION OF ALL DISTURBED AREAS, INCLUDING PLACEMENT OF TOPSOIL, SEED, FERTILIZER AND MULCH AND/OR SOD SHALL BE PERFORMED WITHIN FIVE (5) DAYS OF THE COMPLETION OF FINAL GRADING.
- CONSTRUCTION OPERATIONS SHALL BE SCHEDULED AND PERFORMED SO THAT PREVENTATIVE SOIL EROSION CONTROL MEASURES ARE IN PLACE PRIOR TO EXCAVATION IN CRITICAL AREAS AND TEMPORARY STABILIZATION MEASURES ARE IN PLACE IMMEDIATELY FOLLOWING BACKFILLING OPERATIONS.
- SPECIAL PRECAUTIONS WILL BE TAKEN IN THE USE OF CONSTRUCTION EQUIPMENT TO PREVENT SITUATIONS THAT PROMOTE EROSION.
- PROPER DUST CONTROL SHALL BE MAINTAINED DURING CONSTRUCTION BY USE OF WATER TRUCKS AND/OR DUST PALLIATIVE AS REQUIRED.
- THE CONTRACTOR SHALL BE RESPONSIBLE FOR MAINTAINING ALL TEMPORARY SOIL EROSION CONTROL MEASURES AND REMOVAL OF SOME MEASURES UPON AUTHORIZED COMPLETION OF THE PROJECT. FINAL COMPLETION OF PROJECT WILL NOT BE AUTHORIZED UNTIL ALL SITE WORK AND UTILITY CONSTRUCTION IS COMPLETE AND ALL SOILS ARE STABILIZED.
- TREE PROTECTION FENCING MUST REMAIN INTACT UNTIL RESTORATION OF THE SITE IS COMPLETE.
- SEED IN ACCORDANCE WITH THE PROJECT SPECIFICATIONS.
- THE CONTRACTOR IS TO SUBMIT TO THE ENGINEER, A SEQUENCE OF CONSTRUCTION WITH RESPECT TO THE SOIL EROSION CONTROL MEASURES FOR REVIEW, COMMENT AND APPROVAL. THIS SCHEDULE IS TO INCLUDE INSPECTION AND REPAIR OF ALL TEMPORARY EROSION CONTROL MEASURES DAILY AND WITHIN 24 HOURS OF A STORM EVENT.

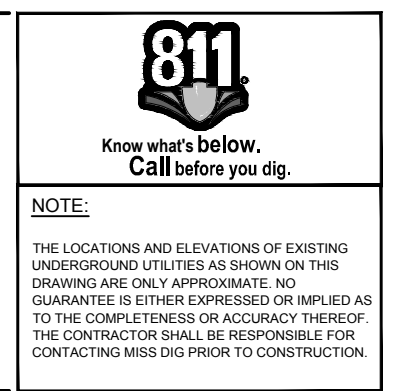
SOIL EROSION AND SEDIMENTATION CONTROL INSTALLATION SEQUENCE:

- INSTALL SILT FENCE, TREE PROTECTION FENCING, INLET FILTERS ON EXISTING DRAINAGE FEATURES, AND ALL OTHER TEMPORARY SOIL EROSION CONTROLS, PRIOR TO ANY EARTH MOVING OPERATION.
- STRIP AND STOCKPILE TOPSOIL. STABILIZE STOCKPILE AS REQUIRED.
- PERFORM EARTH MOVING OPERATIONS INCLUDING CONDUIT INSTALLATION AND LIGHT POLE INSTALLATION.
- CONTINUALLY MAINTAIN EROSION AND SEDIMENTATION CONTROL MEASURES, AS REQUIRED TO ALLOW DRAINAGE AND SEDIMENT REMOVAL. REMOVE ANY ACCUMULATED SEDIMENT IMMEDIATELY.
- COMPLETE ALL FINE GRADING.
- INSTALL SEED AND EROSION CONTROL BLANKET IN ALL DISTURBED AREAS.
- CLEAN OUT STORM SEWER SYSTEMS.
- REMEDY ANY NOTED DEFECTS TO THE SATISFACTION OF THE CITY OF ANN ARBOR'S SOIL EROSION AND SEDIMENTATION CONTROL OFFICIAL.
- ALL TEMP. SOIL EROSION CONTROL MEASURES MUST BE REMOVED, WITH ENGINEERS APPROVAL, PRIOR TO FINAL INSPECTION.

8	BID SET	CJE	AM5	MDP	2021.12.16
A	PRELIMINARY PLAN	CJE	AM5	MDP	2021.11.15
Issued		By		App'd	
File Name: 154500-C-100		BWA	AM5	MDP	2020.03.10
		Dwn.	Dg'n.	Chk'd.	YYYY.MM.DD

Permit/Seal

Client/Project Logo



Client/Project

CITY OF ANN ARBOR

VETERANS MEMORIAL PARK SKATEPARK LIGHTING

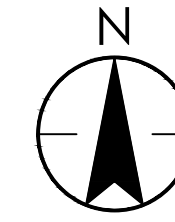
ITB NO. 4707
Ann Arbor, Michigan

Title

EXISTING SITE PLAN

Project No. 2075154500	Scale 0 40' 80'
Revision Sheet 0 3 of 7	Drawing No. C-100

MATCHLINE SEE SHEET E-101 OR E-102



LEGEND

- UNDERGROUND RACEWAY
- ☐ JUNCTION BOX
- ⊕ DUPLEX RECEPTACLE, 20A, 120V WP COVER

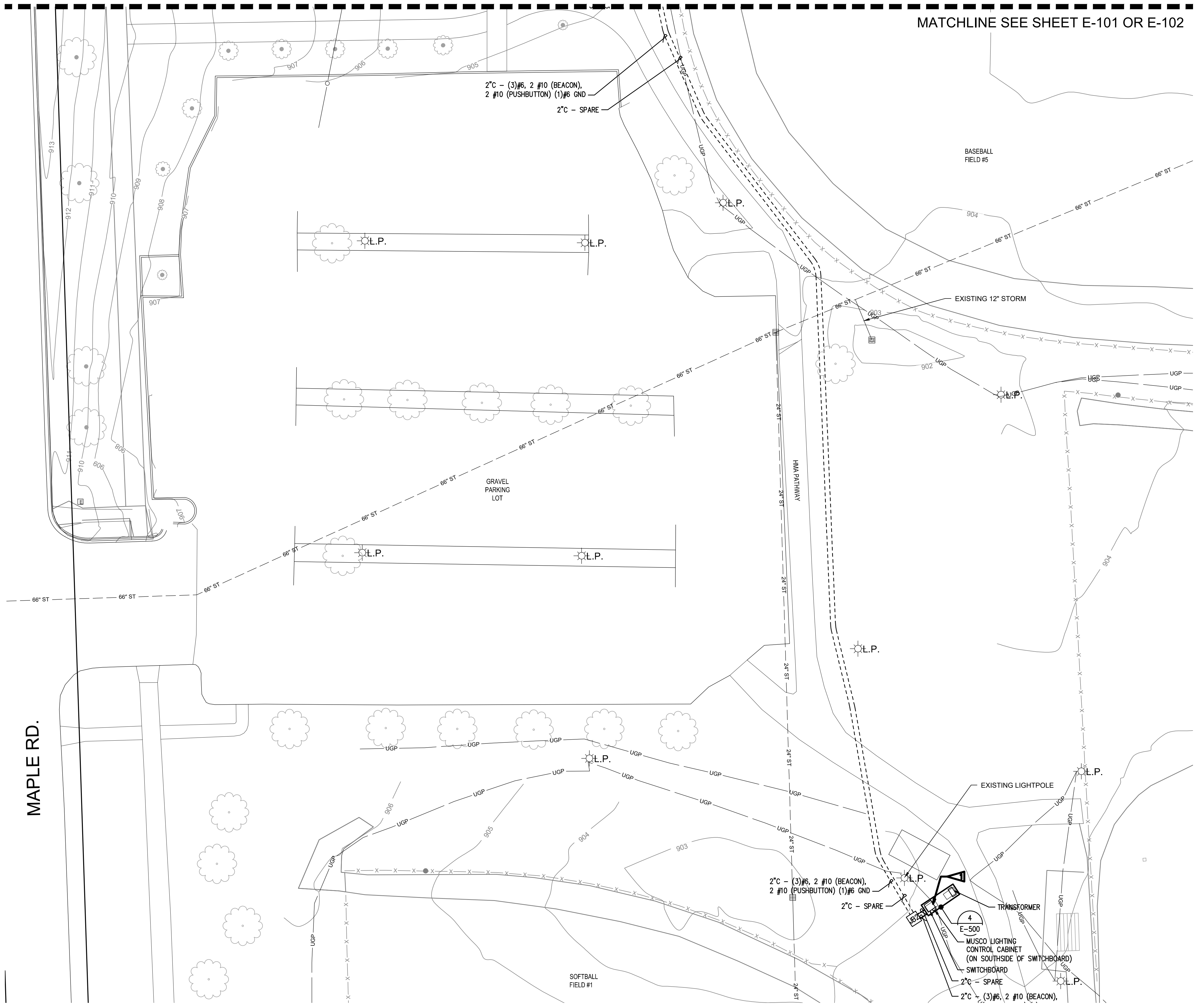
FLAG NOTES:

- ▲ REMOVE EXISTING 3-POLE BREAKER IN 208Y/120V PANEL AND PROVIDE NEW 3-POLE, 50 AMP BREAKER FOR SKATE PARK LIGHTING.

2" - (3)#6, 2 #10 (BEACON),
 2 #10 (PUSHBUTTON) (1)#6 GND
 2" - SPARE

2" - (3)#6, 2 #10 (BEACON),
 2 #10 (PUSHBUTTON) (1)#6 GND
 2" - SPARE


TRANSFORMER
 4
 E-500
 MUSCO LIGHTING
 CONTROL CABINET
 (ON SOUTHSIDE OF SWITCHBOARD)
 SWITCHBOARD
 2" - SPARE
 2" - (3)#6, 2 #10 (BEACON),



8	BID SET	CJE	MDP	2021.12.16
A	PRELIMINARY PLAN	CJE	MDP	2021.11.15
Issued		By Appd YYY.MM.DD		
File Name: 154500-E-100		BWA	AMS	MDP
		Dwn.	Dgrr.	Chkd.

Permit/Seal

Client/Project Logo



NOTE:
 THE LOCATIONS AND ELEVATIONS OF EXISTING UNDERGROUND UTILITIES AS SHOWN ON THIS DRAWING ARE ONLY APPROXIMATE. NO GUARANTEE IS EITHER EXPRESSED OR IMPLIED AS TO THE COMPLETENESS OR ACCURACY THEREOF. THE CONTRACTOR SHALL BE RESPONSIBLE FOR CONTACTING MISS-DIG PRIOR TO CONSTRUCTION.

Client/Project
 CITY OF ANN ARBOR

VETERANS MEMORIAL PARK
 SKATEPARK LIGHTING

ITB NO. 4707
 Ann Arbor, Michigan

Title

LIGHTING LAYOUT

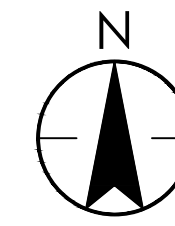
Project No. 2075154500	Scale 0 20' 40'
Revision Sheet 0 4 of 7	Drawing No. E-100

Copyright Reserved

The Contractor shall verify and be responsible for all dimensions. DO NOT scale the drawing - any errors or omissions shall be reported to Stantec without delay.
The Copyrights to all designs and drawings are the property of Stantec. Reproduction or use for any purpose other than that authorized by Stantec is forbidden.

Consultant

Notes

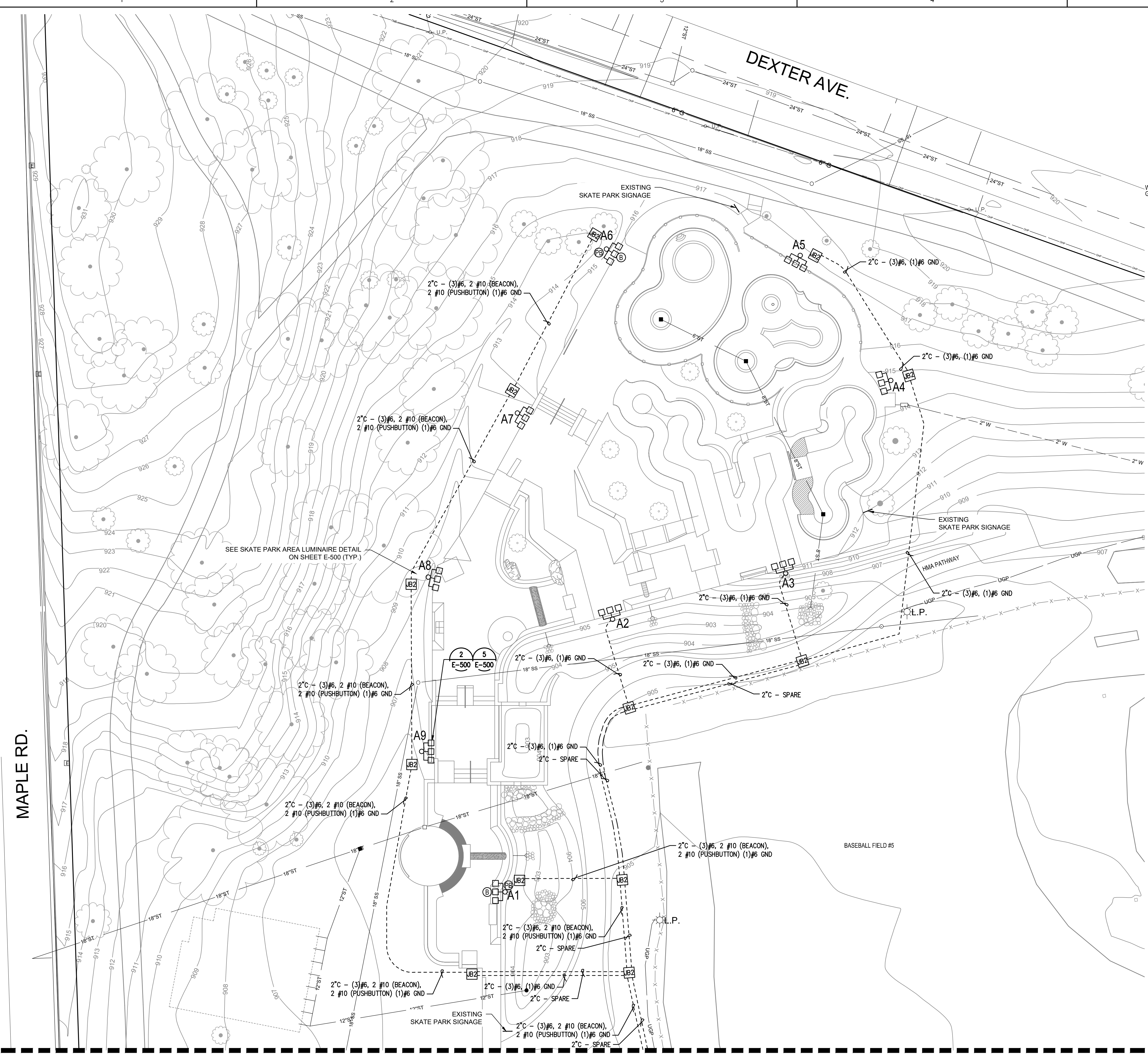


LEGEND

- GALVANIZED STEEL FLOODLIGHT POLE
- SKATE AREA LUMINAIRE, 343 WATT LED, 4000K, TYPE 4, 208 VOLT
- UNDERGROUND RACEWAY
- JB JUNCTION BOX
- WP DUPLX RECEPTACLE, 20A, 120V WP COVER
- GFI
- Ⓟ PUSHBUTTON, REES 9001 SERIES ON CAST IRON FS BOX
- Ⓟ FLASH BEACON, 120 VOLT

PROPOSED POLE HEIGHT AND LUMINAIRE SCHEDULE

POLE	HEIGHT	FLOODLIGHTS
A1	30'-0"	3
A2	30'-0"	3
A3	30'-0"	3
A4	30'-0"	3
A5	30'-0"	3
A6	30'-0"	3
A7	30'-0"	3
A8	30'-0"	3
A9	30'-0"	3
TOTAL		27



MATCHLINE SEE SHEET E-100

8	BID SET	CJE	MDP	2021.12.16
A	PRELIMINARY PLAN	CJE	MDP	2021.11.15
Issued		By	Acqd	YYYY.MM.DD
File Name:	154500-E-101	BWA	AMS	MDP
		Dwn.	Dgtr.	Crtd.
				YYYY.MM.DD

Permit/Seal

Client/Project Logo

NOTE:
THE LOCATIONS AND ELEVATIONS OF EXISTING UNDERGROUND UTILITIES AS SHOWN ON THIS DRAWING ARE ONLY APPROXIMATE. NO GUARANTEE IS EITHER EXPRESSED OR IMPLIED AS TO THE COMPLETENESS OR ACCURACY THEREOF. THE CONTRACTOR SHALL BE RESPONSIBLE FOR CONTACTING MISS-DIG FROM TO CONSTRUCTION.

Client/Project

CITY OF ANN ARBOR

VETERANS MEMORIAL PARK
SKATEPARK LIGHTING
ITB NO. 4707
Ann Arbor, Michigan
Title

AREA LIGHTING ALTERNATE

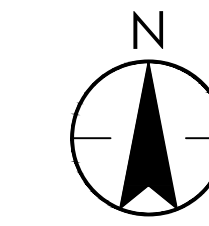
Project No.	2075154500	Scale	0' 20' 40'
Revision	Sheet	Drawing No.	E-101
0	5 of 7		

Copyright Reserved

The Contractor shall verify and be responsible for all dimensions. DO NOT scale the drawing - any errors or omissions shall be reported to Stantec without delay.
The Copyrights to all designs and drawings are the property of Stantec. Reproduction or use for any purpose other than that authorized by Stantec is forbidden.

Consultant

Notes



LEGEND

- GALVANIZED STEEL FLOODLIGHT POLE
- △ SHIELDED LED FLOOD LIGHT, 400 WATT, 208 VOLT
- UNDERGROUND RACEWAY
- ▢ JUNCTION BOX
- ⊕ DUPLEX RECEPTACLE, 20A, 120V WP COVER
- Ⓟ PUSHBUTTON, REES 9001 SERIES ON CAST IRON FS BOX
- Ⓢ FLASHING BEACON, 120 VOLT

PROPOSED POLE HEIGHT AND FLOODLIGHT SCHEDULE

POLE	HEIGHT	FLOODLIGHTS
F1	50'-0"	4
F2	50'-0"	3
F3	50'-0"	3
F4	50'-0"	4
F5	50'-0"	2
F6	50'-0"	3
F7	50'-0"	3
TOTAL		22



8	BID SET	CJE	MDP	2021.12.16
A	PRELIMINARY PLAN	CJE	MDP	2021.11.15
Issued		By	Appd	YYYY.MM.DD
File Name:	154500-E-102	BWA	AMS	MDP
		Dwn.	Dgtr.	Chkd.
				YYYY.MM.DD

Permit/Seal

Client/Project Logo

NOTE:
THE LOCATIONS AND ELEVATIONS OF EXISTING UNDERGROUND UTILITIES AS SHOWN ON THIS DRAWING ARE ONLY APPROXIMATE. NO GUARANTEE IS EITHER EXPRESSED OR IMPLIED AS TO THE COMPLETENESS OR ACCURACY THEREOF. THE CONTRACTOR SHALL BE RESPONSIBLE FOR CONTACTING 811 PRIOR TO CONSTRUCTION.

Client/Project
CITY OF ANN ARBOR

VETERANS MEMORIAL PARK
SKATEPARK LIGHTING

ITB NO. 4707
Ann Arbor, Michigan

FLOOD LIGHTING ALTERNATE

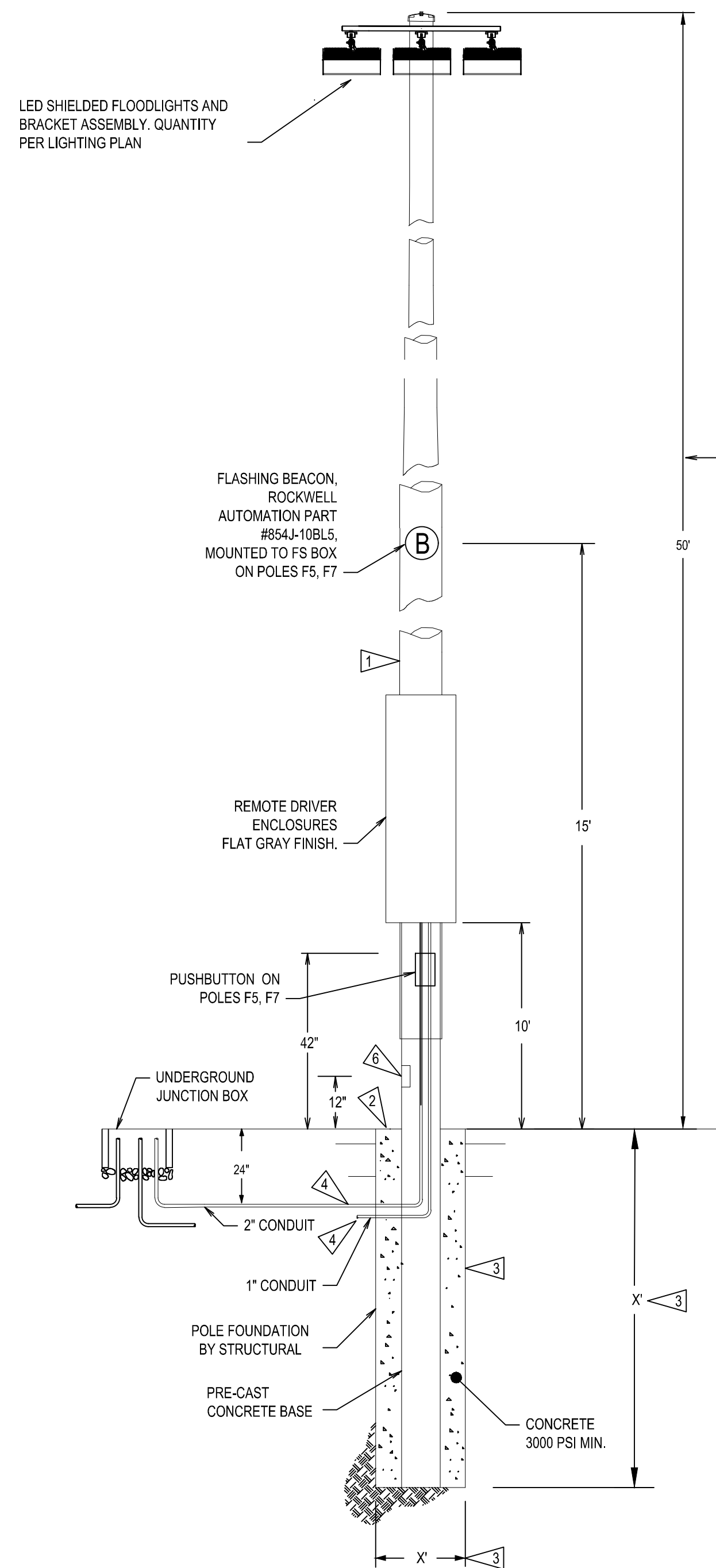
Project No. 2075154500	Scale 0 30' 60'
Revision Sheet 0 6 of 7	Drawing No. E-102

Copyright Reserved

The Contractor shall verify and be responsible for all dimensions. DO NOT scale the drawing - any errors or omissions shall be reported to Stantec without delay.
The Copyrights to all designs and drawings are the property of Stantec. Reproduction or use for any purpose other than that authorized by Stantec is forbidden.

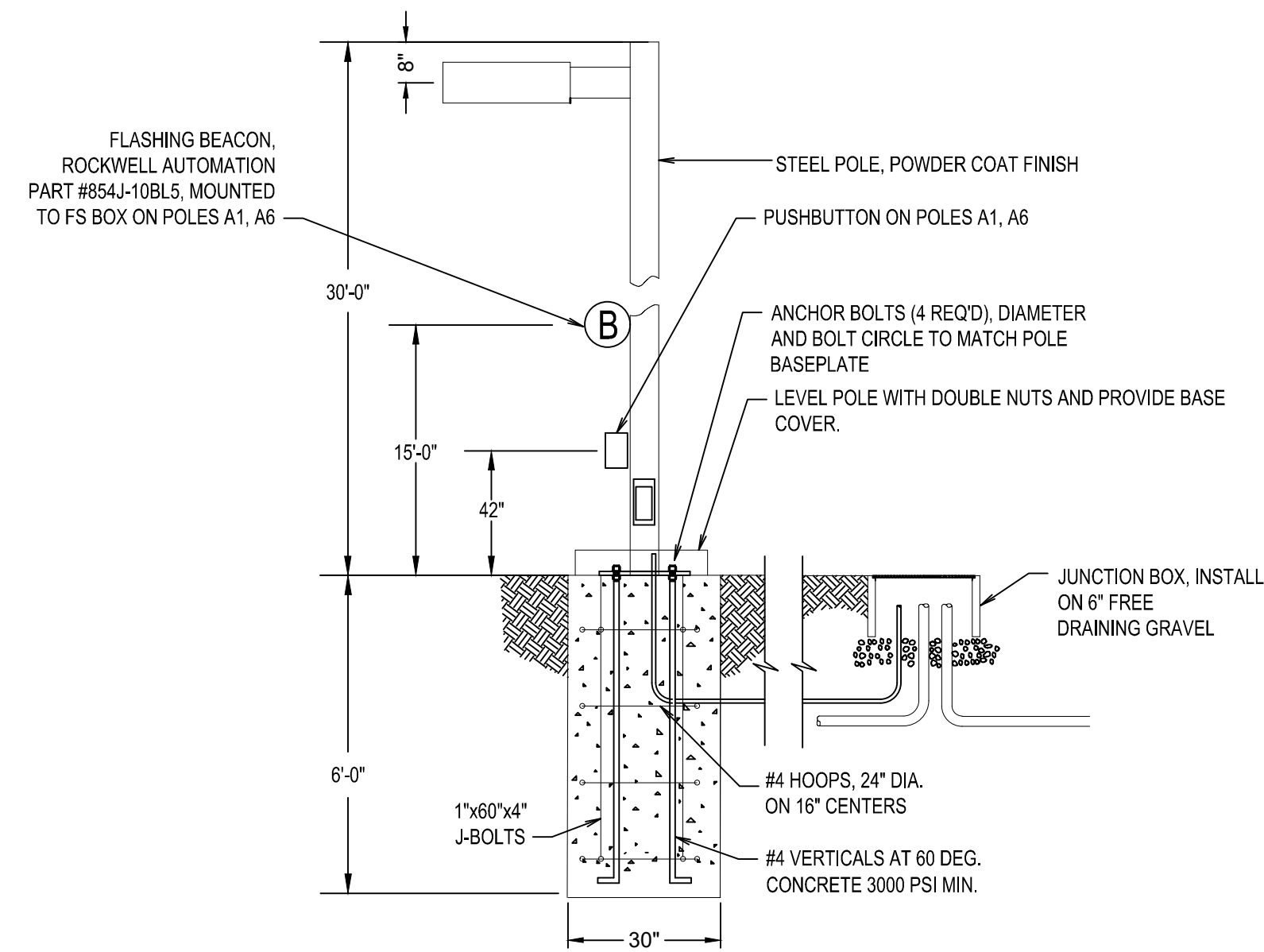
Consultant

Notes

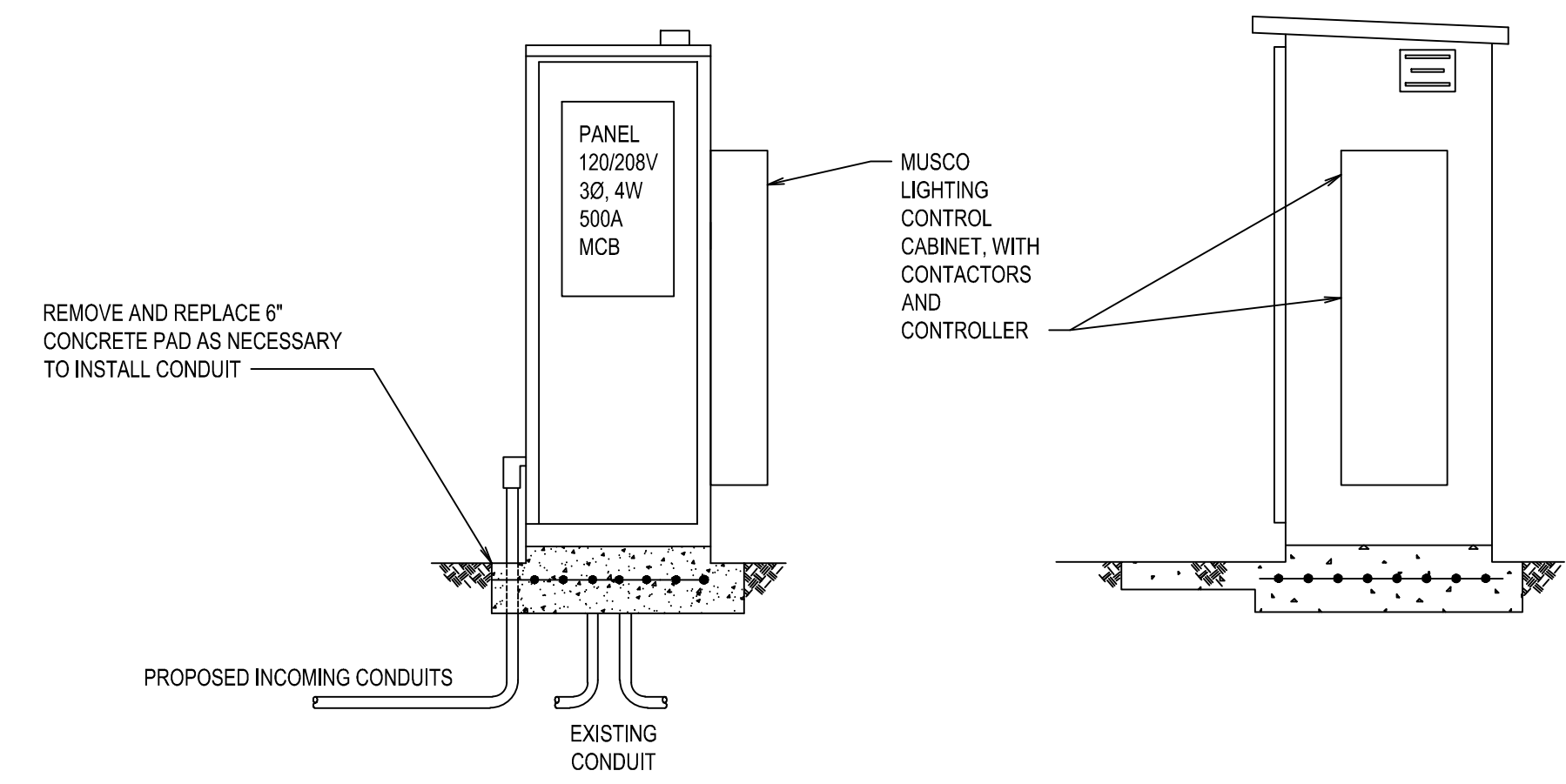


1 SKATE PARK FLOODLIGHT POLE DETAIL
SCALE: NONE
E-500

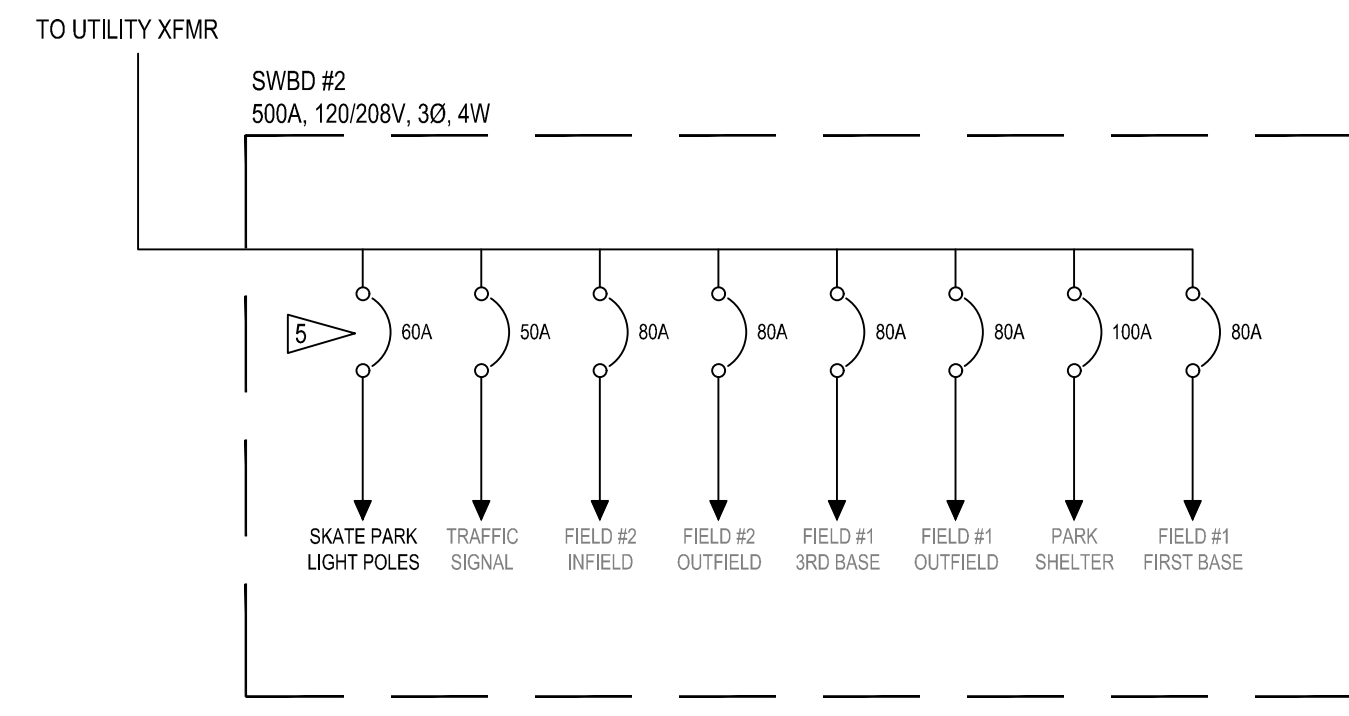
- NOTE:
- HOLE TO BE AUGERED, MINIMIZE DISTURBANCE OF IN-SITU SOILS AND DURING AUGERING.
 - CONTRACTOR TO PROVIDE PREFABRICATED ANCHOR BOLT BUILD-UP.
 - NO WATER IS TO BE IN HOLE AT THE TIME OF CONCRETE PLACEMENT.
 - CONCRETE SHALL BE VIBRATED DURING PLACEMENT.
 - COPPER CLAD GROUND ROD (1 REQUIRED) TO BE 5/8" DIA, 8'-0". LOCATE IN HANDHOLE.
 - GROUND CABLE SHALL BE #6 SOFT BARE COPPER WIRE WELDED TO GROUND ROD WITH 24" SLACK ABOVE FOUNDATION TOP.
 - ELECTRICAL CONTRACTOR SHALL VERIFY EXACT ANCHOR BOLT PATTERN WITH FIXTURE/POLE MANUFACTURER PRIOR TO POURING CONCRETE BASE.



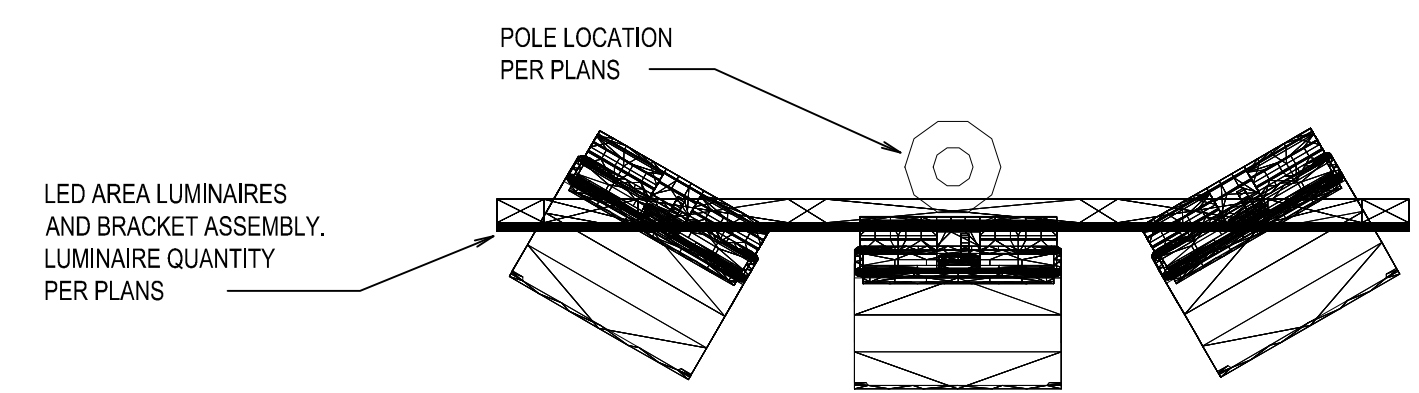
2 SKATE PARK AREA LUMINAIRE DETAIL
SCALE: NONE
E-500



4 EXISTING ELECTRICAL SERVICE CABINET DETAIL
SCALE: NONE
E-500

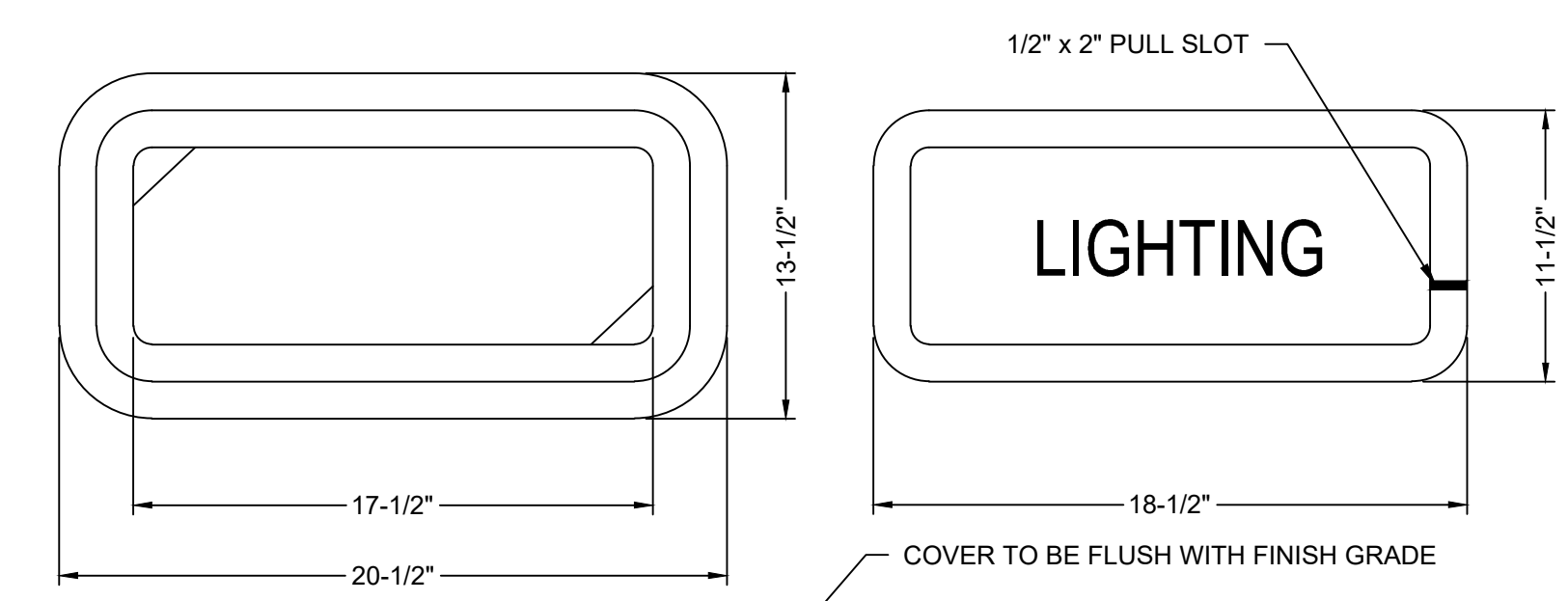


3 EXISTING ONE-LINE DETAIL
SCALE: NONE
E-500

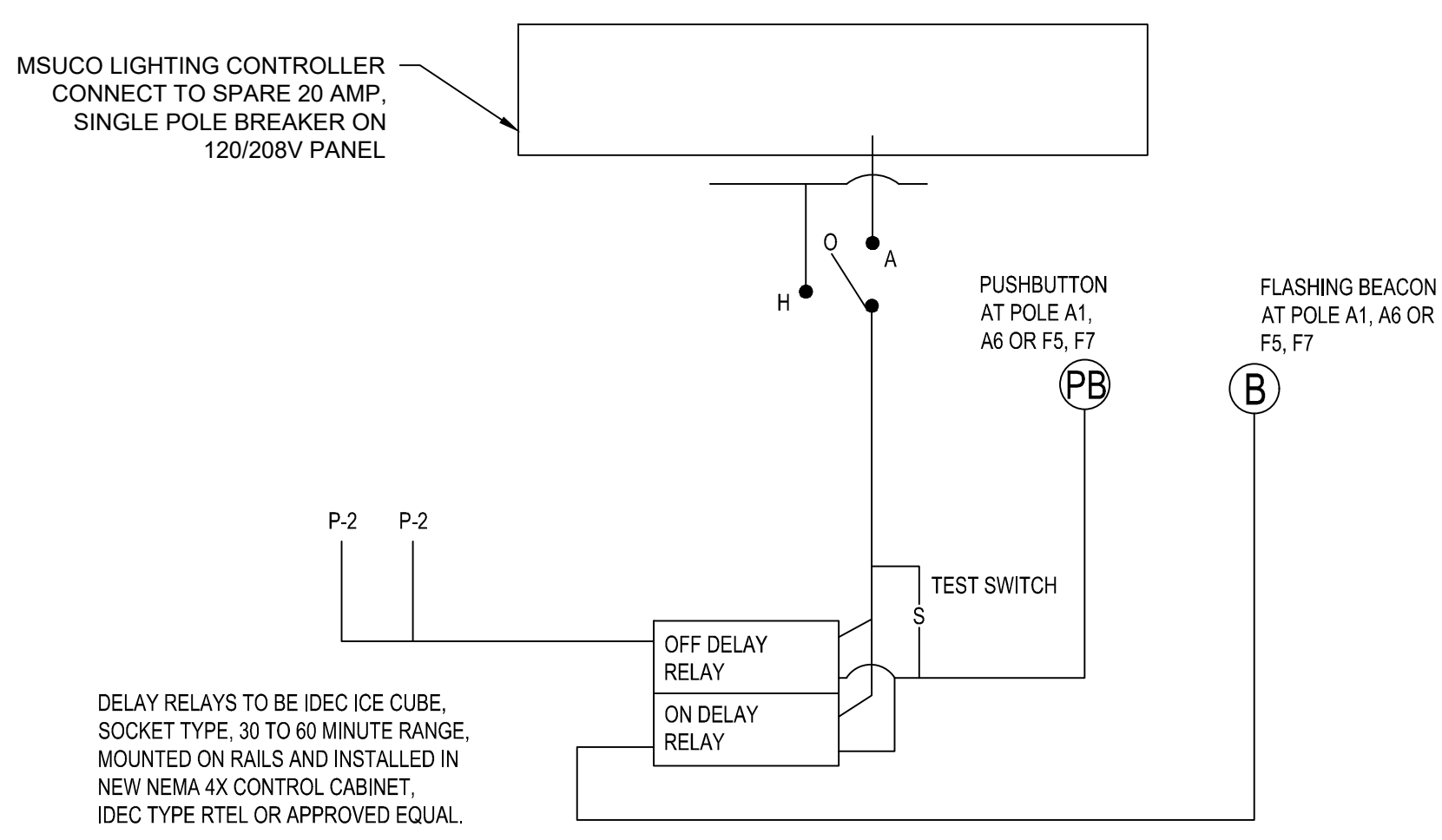


5 AREA LUMINAIRE POLE DETAIL - TOP VIEW
SCALE: NONE
E-500

- NOTES:
- PROVIDE POLYMER CONCRETE JUNCTION BOX, QUAZITE MODEL PC11188A12 WITH COVER PC11188A00 OR APPROVED EQUIVALENT.
 - COVERS SHALL BE SECURED WITH 3/8" STAINLESS STEEL BOLTS, NUTS, AND WASHERS.
 - CONDUIT ENTERING THE BOX SHALL HAVE 90° LONG RADIUS BEND (INSIDE THE BOX). THE CONDUITS OPENING, INSIDE THE BOX, SHALL BE AT LEAST 4" BELOW THE LID, OPENING SHALL HAVE SMOOTH EDGE. IF THE CONDUIT IS PVC, A SLIP COUPLING MUST BE USED. IF THE CONDUIT IS RIGID PIPE, A PROTECTIVE BUSHING SHALL BE USED.
 - CONDUCTORS SHALL HAVE A MINIMUM OF 24" SLACK FROM CONDUIT BELL END.
 - WHERE BOXES ARE INSTALLED IN CONCRETE AREAS, A 1/2" PREMOLDED EXPANSION JOINT SHALL BE INSTALLED AROUND THE BOX.

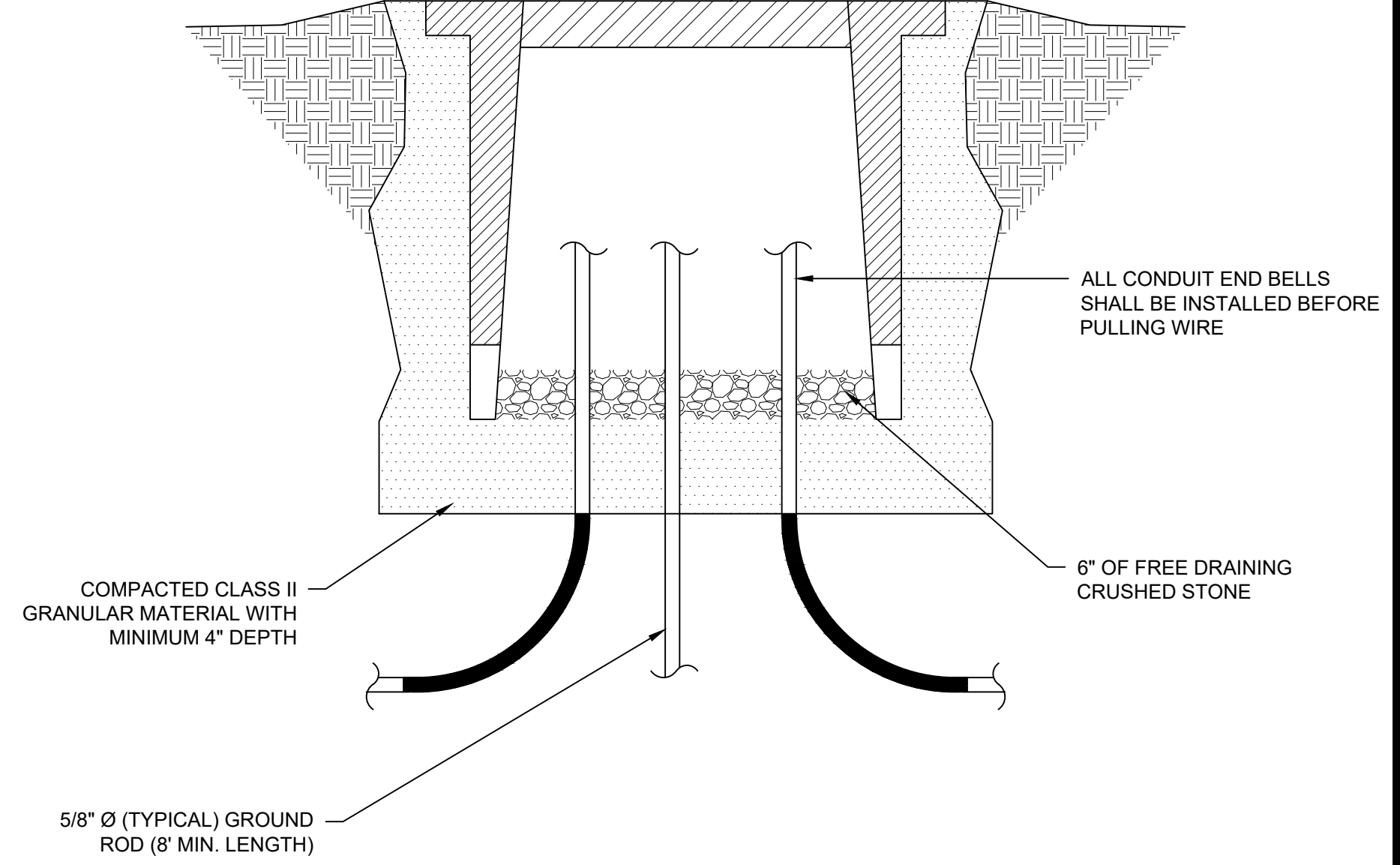


7 JUNCTION BOX DETAIL
SCALE: NONE
E-500



6 FLASHING BEACON CONTROL
SCALE: NONE
E-500

- FLAG NOTES
- SUPPLIER OF GALVANIZED STEEL POLE TO PROVIDE STRUCTURAL CALCULATIONS FROM A LICENSED STRUCTURAL ENGINEER REGISTERED IN THE STATE OF MICHIGAN. CALCULATION TO INCLUDE WIND AND SEISMIC LOADS PER IBC 2018. SUBMIT WITH MANUFACTURER SHOP DRAWINGS DURING SUBMITTAL PHASE OF PROJECT.
 - CONCRETE MOW STRIP.
 - POLE FOUNDATION CALCULATIONS TO BE PROVIDED BY CONTRACTOR. CALCULATIONS TO BE PROVIDED BY A LICENSED STRUCTURAL ENGINEER REGISTERED IN THE STATE OF MICHIGAN.
 - PROVIDE ONE 2" AND ONE 1" CONDUITS UP FLOODLIGHT POLE. EXTEND CONDUIT TO ADJACENT BOX.
 - REMOVE EXISTING 3-POLE BREAK AND PROVIDE NEW 3-POLE, 50 AMP BREAKER FOR SKATE PARK LIGHTING.
 - HAND HOLE.



8	BID SET	CJE	MDP	2021.12.16
A	PRELIMINARY PLAN	CJE	MDP	2021.11.15
Issued		By	Appd	YYYY.MM.DD
File Name: 154500-E-500		BWA	AMS	MDP
		Dwn.	Dgtr.	Chk'd.
				YYYY.MM.DD

Permit/Seal

Client/Project Logo

NOTE:
THE LOCATIONS AND ELEVATIONS OF EXISTING UNDERGROUND UTILITIES AS SHOWN ON THIS DRAWING ARE ONLY APPROXIMATE. NO GUARANTEE IS EITHER EXPRESSED OR IMPLIED AS TO THE COMPLETENESS OR ACCURACY THEREOF. THE CONTRACTOR SHALL BE RESPONSIBLE FOR CONTACTING MISS DIG FROM TO CONSTRUCTION.

Client/Project
CITY OF ANN ARBOR

VETERANS MEMORIAL PARK
SKATEPARK LIGHTING

ITB NO. 4707
Ann Arbor, Michigan

Title

DETAILS

Project No. 2075154500	Scale
Revision Sheet 0	Drawing No. E-500
	7 of 7