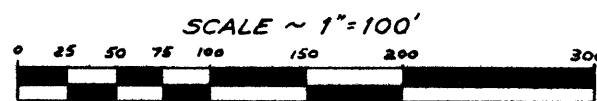
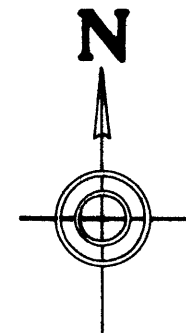


# ASSESSOR'S PLAT NUMBER 50

## A REPLAT OF LOTS 11 THRU 17 INCL. OF EASTBROOKE SUBDIVISION AND ALSO LOT 28 OF WAGNER-McCOMB BOULEVARD GARDENS BEING A SUBDIVISION OF THE W. 1/2 OF THE N.W. 1/4 OF SECTION 11, T.3S., R.6E., CITY OF ANN ARBOR, WASHTENAW COUNTY, MICHIGAN

1 OF 1  
12/23/1963  
ASSESSOR'S PLAT NO. 50  
ANN ARBOR, MICHIGAN

PREPARED BY-  
AMERICAN ENGINEERING CO.  
CIVIL ENGRS. & SURVEYORS  
ANN ARBOR, MICHIGAN



ALL DIMENSIONS ARE IN FEET & DECIMALS THEREOF  
ALL CURVILINEAR DISTANCES ARE ARC LENGTHS

### DEDICATION

KNOW ALL MEN BY THESE PRESENTS, That I, Howard L. Ledbetter, Assessor of the City of Ann Arbor, Washtenaw County, State of Michigan, by virtue of authority in me vested by Section 51, Act 172, of 1929, having been duly authorized by the Common Council of the City of Ann Arbor, have caused the land described in the annexed plat to be surveyed, laid out and platted, to be known as ASSESSOR'S PLAT NUMBER 50- A Replat of Lots 11 thru 17 incl. of EASTBROOKE SUBDIVISION, AND ALSO LOT 28 OF WAGNER-McCOMB BOULEVARD GARDENS Being a Subdivision of the W. 1/2 of the N.W. 1/4 of Section 11, T.3 S., R.6 E., City of Ann Arbor, Washtenaw County, Michigan, and that the streets and alleys as shown on said plat are now being used for such purposes, and that the plat conforms with the requirements of Section 51, Act 172, of Public Acts of 1929, as amended.

### Witnesses:

*Robert M. Leary*  
ROBERT M. LEARY  
*Dea Mast*  
Dea Mast

Howard L. Ledbetter  
*Howard L. Ledbetter* (Seal)  
Assessor of the City of Ann Arbor,  
Washtenaw County, Michigan.

### ACKNOWLEDGMENT

STATE OF MICHIGAN } ss  
County of Washtenaw }

On this 22nd day of August A.D., 1963, before me, a Notary Public in and for said county, personally appeared the above named Howard L. Ledbetter, Assessor of the City of Ann Arbor, known to me to be the person who executed the above dedication, and acknowledged the same to be his free act and deed as such Assessor.

*Esther J. Michelfelder*  
Esther J. Michelfelder  
Notary Public in and for Washtenaw Co.

My Commission expires June 20, 1964.

I hereby certify that the title to Creek Drive and Belvidere St. has been acquired by the City of Ann Arbor by means of dedication for Public Use.

### COPY

Register's Office  
Washtenaw County, } S.S.

Plat of Assessor's Plat  
Number 50  
was recorded by 23rd day of  
Dec, 1963 11:00 o'clock  
A.M. in 17 of Plats

*Patricia Newkirk Hardy*  
Patricia Newkirk Hardy  
Register of Deeds  
ORIGINAL ON FILE  
C. R. Amundson

MUNICIPAL APPROVAL  
This plat was approved by the Council of the City of Ann Arbor, at a meeting held on the 16 day of September, 1963, and is in compliance with Sec. 19 A, and the width of lots conform with the requirements of Sec. 30, Act 172 of 1929 as amended.

*Fred J. Locker*  
Fred J. Locker, Clerk

### DESCRIPTION OF LAND PLATTED

The land embraced in the annexed plat of Assessor's Plat Number 50, A Replat of Lots 11 thru 17 incl. of Eastbrooke Subdivision and also Lot 28 of Wagner-McComb Boulevard Gardens being a Subdivision of the W. 1/2 of the N.W. 1/4 of Section 11, T.3S., R.6E., City of Ann Arbor, Washtenaw County, Michigan, is described as follows: Commencing at the W. 1/4 corner, Section 11, T.3S., R.6 E., Pittsfield Township, Washtenaw County, Michigan; thence North along the West line of said section 175.45 ft.; thence N69°38'30"E 392.39 ft.; thence N29°38'50"W 25.00 ft.; thence Northeasterly 10.00 ft. along the arc of a 591.96 ft. radius circular curve concave Northwesterly through a central angle of 00°58'04" 10.00 ft.; thence N27°58'08"W 163.87 ft.; thence N24°04'35"E 147.00 ft. to the Point of Beginning; thence continuing N24°04'35"E 154.73 ft.; thence N07°14'05"W 118.98 ft.; thence N80°51'30"E 262.17 ft.; thence S00°20'05"E 704.13 ft.; thence S88°43'55"W 105.64 ft.; thence N01°34'52"W 211.62 ft.; thence N29°14'45"W 55.45 ft.; thence N49°50'25"W 225.77 ft. to the Point of Beginning. Containing 8 lots numbered 1 thru 8 inclusive.

### CERTIFICATE OF APPROVAL BY THE CITY PLANNING COMMISSION

This plat was approved by the Planning Commission of the City of Ann Arbor, Mich. at a meeting held on the 10th day of Sept, 1963.

*Richard A. Ware*  
Richard A. Ware, Chairman  
*Robert V. Galbreath*  
ROBERT V. GALBREATH, SEC.

### APPROVAL BY COUNTY PLAT BOARD

This plat was approved by the Washtenaw County Plat Board on the 22nd day of December, 1963.

*Patricia Newkirk Hardy*  
Patricia Newkirk Hardy  
(County Register of Deeds)  
*J. Martin Rempy*  
J. Martin Rempy  
(Auditor)  
*Herbert G. Loeffler*  
Herbert G. Loeffler  
(Auditor)

*John H. Flook*  
John H. Flook  
(County Drain Commissioner)  
*John P. Cook*  
John P. Cook  
(Auditor)

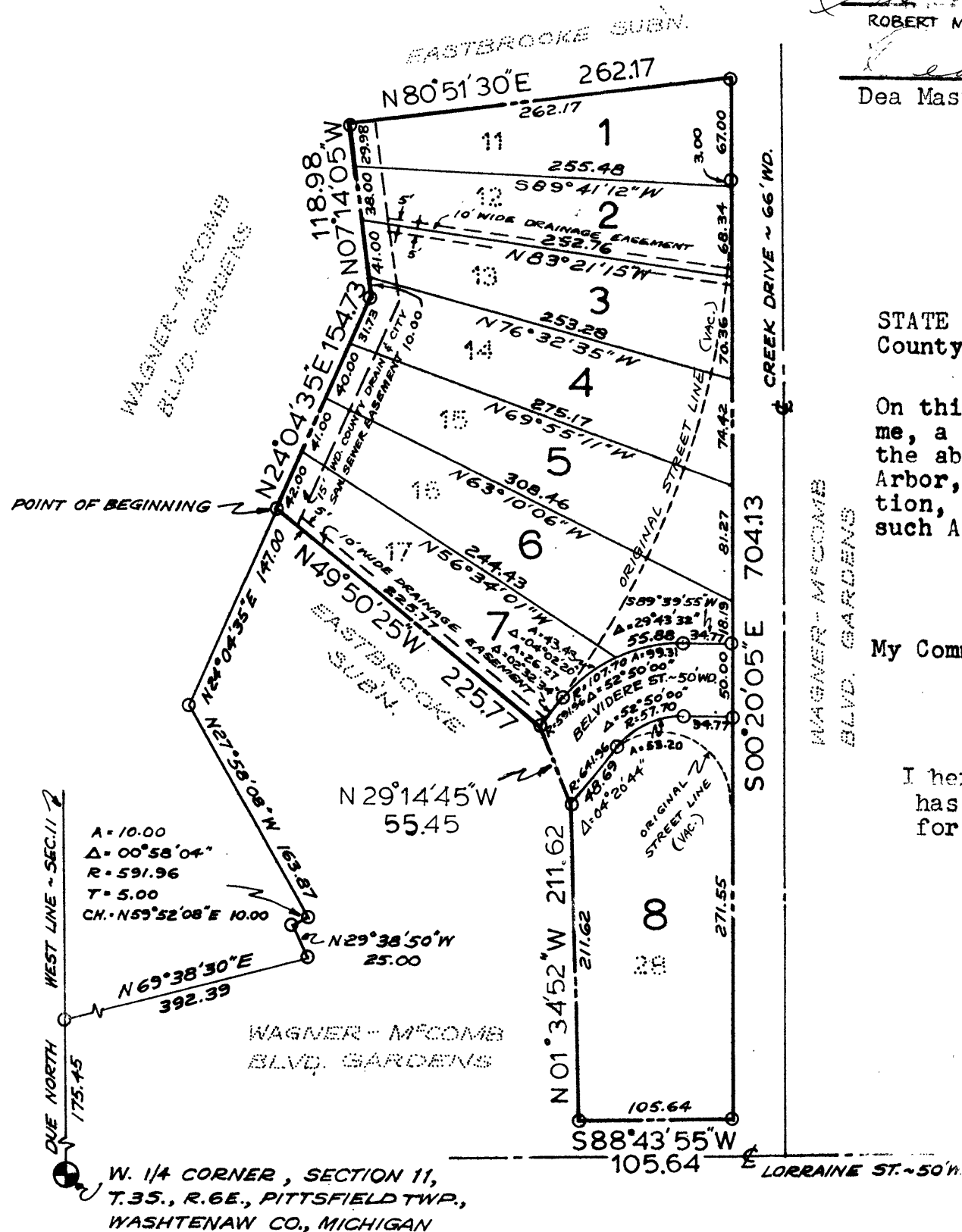
### SURVEYOR'S CERTIFICATE

I hereby certify that the plat hereon delineated is a correct one and that permanent metal monuments consisting of bars not less than 1/2 inch in diameter and 36 inches in length, encased in concrete cylinders at least four inches in diameter and 36 inches in depth, have been set at all points marked thus (o) as thereon shown at all angles in the boundaries of the land platted and at all intersections of streets with the boundaries of the plat as shown on said plat. All dimensions are given in feet and decimals thereof.

*Murray J. Knowles, Jr.*  
Murray J. Knowles, Jr.  
Reg. Civil Eng. & Surveyor #5342

I hereby certify this copy is a true copy of map or plat forwarded the Register of Deeds for recording.  
Date Dec 24, 1963  
FILED IN AUDITOR GENERAL'S DEPT.  
Date Dec 24, 1963  
EXAMINED AND APPROVED  
Date Dec 24, 1963

*Richard E. Lomax*  
Richard E. Lomax  
Auditor General  
By *Richard E. Lomax*  
Richard E. Lomax - Post Auditor



W. 1/4 CORNER, SECTION 11,  
T.3S., R.6E., PITTSFIELD TWP.,  
WASHTENAW CO., MICHIGAN