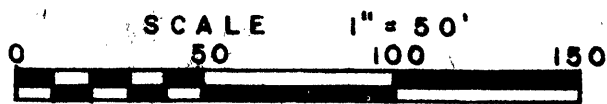


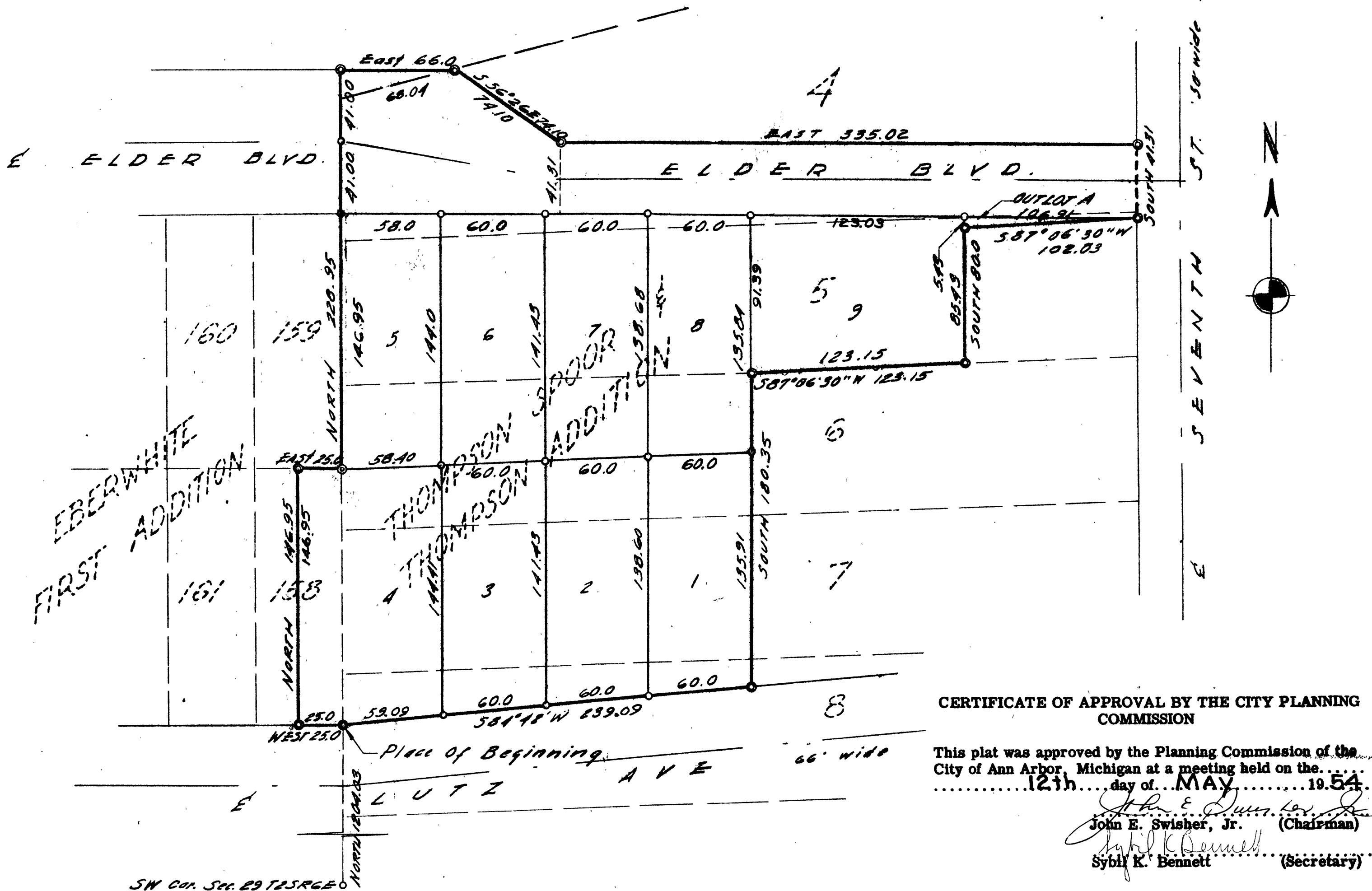
KURTZ SUBDIVISION

OF PART OF LOT 158 OF THE PLAT OF EBERWHITE FIRST ADDITION TO THE CITY OF ANN ARBOR, AND OF PARTS OF LOTS 4, 5, 6, 7, AND 8 OF THOMPSON, SPOOR AND THOMPSON'S ADDITION TO THE CITY OF ANN ARBOR, WASHTENAW COUNTY, MICHIGAN



ALL DIMENSIONS IN FEET AND DECIMALS THEREOF

SURVEY BY ATWELL-HICKS INC.



CERTIFICATE OF APPROVAL BY THE CITY PLANNING COMMISSION

This plat was approved by the Planning Commission of the City of Ann Arbor, Michigan at a meeting held on the 12th day of MAY 1954.

John E. Swisher, Jr. (Chairman)
Sybil K. Bennett (Secretary)

SURVEYOR'S CERTIFICATE

I hereby certify that the plat hereon delineated is a correct one and that permanent metal monuments consisting of bars not less than one-half inch in diameter and 48 inches in length, or shorter bars of not less than one-half inch in diameter lapped over each other at least 6 inches with an over-all length of not less than 48 inches, encased in a concrete cylinder at least 4 inches in diameter and 48 inches in depth have been placed at points marked thus (⊙) as thereon shown at all angles in the boundaries of the land platted, at all the intersections of streets, intersections of alleys, or of streets and alleys, and at the intersections of streets and alleys with the boundaries of the plat as shown on said plat.

Herbert S. Hicks
Registered Land Surveyor or Registered Professional Engineer
No. 1715

MUNICIPAL APPROVAL

This plat was approved by the Common Council of the City of Ann Arbor at a meeting held June 7, 1954.

Fred J. Looker (Clerk)

J. Martin Remppe Auditor
Adolph F. Gross Auditor
Herbert G. Loeffler Auditor

COUNTY TREASURER'S CERTIFICATE

Office of County Treasurer, Washtenaw County. I hereby certify that there are no tax liens or titles held by the State on the lands described hereon, and that there are no tax liens or titles held by individuals on said lands, for the five years preceding the 7th day of June, 1954, and that the taxes for said period of five years are all paid, as shown by the records of this office. This certificate does not apply to taxes, if any, now in process of collection by township, city or village collecting officers.

W. F. Vernor (County Treasurer)

DEDICATION

KNOW ALL MEN BY THESE PRESENTS, that we, Kurtz Building Company, a co-partnership composed of Walter L. Kurtz and Edward V. Kurtz, as proprietors, have caused the land embraced in the annexed plat to be surveyed, laid out and platted, to be known as KURTZ SUBDIVISION of part of Lot 158 of the plat of Eberwhite First Addition to the City of Ann Arbor and of parts of Lots 4, 5, 6, 7 and 8 of Thompson, Spoor and Thompson's Addition to the City of Ann Arbor, Washtenaw County, Michigan and that the Boulevard as shown on said plat are hereby dedicated to the use of the public.

Signed and Sealed in the Presence of:
Olga E. Hochrein (Witness) Walter L. Kurtz
Verniece J. Lanning (Witness) Edward V. Kurtz

ACKNOWLEDGMENT

STATE OF MICHIGAN ss. County of Washtenaw. On this 5th day of May 1954, before me, a Notary Public in and for said County, personally came the above named Walter L. Kurtz and Edward V. Kurtz known to me to be the persons who executed the above dedication, and acknowledged the same to be their free act and deed.

Olga E. Hochrein Notary Public, Washtenaw County. My Commission expires Feb. 17, 1957.

DESCRIPTION OF LAND PLATTED

The land embraced in the annexed plat of KURTZ SUBDIVISION of part of Lot 158 of the plat of Eberwhite First Addition to the City of Ann Arbor, and of parts of Lots 4, 5, 6, 7 and 8 of Thompson, Spoor and Thompson's Addition to the City of Ann Arbor, Washtenaw County, Michigan is described as follows:

Commencing at the S. W. corner of Section 29, T2S., R6E., City of Ann Arbor, Washtenaw County, Michigan; Thence along the West line of Section 29, North 1204.03 for a PLACE OF BEGINNING: Thence West 25.0 feet; thence North 146.95 feet; thence East 25.0; thence North 228.95 feet; thence East 66.0 feet; thence S. 56° 26' E. 74.10 feet; thence East 335.02 feet; thence South 41.31 feet; thence S. 87° 06' 30" W 102.03 feet; thence South 80.0 feet; thence S. 87° 06' 30" W. 123.15 feet; thence South 180.35 feet; thence S. 84° 42' W. 239.09 feet to the place of beginning.

APPROVAL BY COUNTY PLAT BOARD

This plat was approved on the 12th day of June 1954 by the Washtenaw County Plat Board.

Thomas A. FitzGerald (County Register of Deeds)

MUNICIPAL APPROVAL

This plat was approved by the Board of Public Works of the City of Ann Arbor at a meeting held May 19, 1954.

Fred J. Looker (Clerk)

I hereby certify that this copy is a true copy of the map or plat forwarded to the Register of Deeds for recording.

Date June 15, 1954
Filed in Auditor General's Dept.
Date June 18, 1954
Examined and Approved
Date June 15, 1954

Plat of Kurtz Subdivision
City of Ann Arbor
was Recorded this 17th day of June A.D., 1954 at 12:29 o'clock A.M. in Liber 12 of Plats
on Page 18
Thomas A. FitzGerald Register of Deeds