

Introduction

The following pages document the appearance of the five proposed downtown Ann Arbor Historic Districts as of late 1988, early 1989. In order to provide a better understanding of the environmental character of the area, the Report shows each building as part of its blockscape. The pages are arranged in alphabetical order by street name. For streets running north/south, the blockscapes begin on the east side, proceed south to the edge of the proposed boundaries and then return northward to the west side of that street. The procedure is the same for east/west streets, beginning on the north and working westward. Each blockscape indicates the particular historic district proposed as well.

Where a building fronts on another street, its address is given in parentheses. A single asterisk beside an address indicates a proposed Significant Historic structure. A double asterisk indicates a structure that has

already been designated. An (N) indicates a Non-Contributing Structure. All remaining structures would be considered Complementary Historic Structures. Specific information on each address is as follows:

Date of Construction - where an older building has a modern or later facade, the date of the later facade was used only if it replaced the original one. In some cases the earlier date is given in parenthesis. If the original facade remains intact underneath the new facade, the earlier date was used instead. Where a building was moved to an address from an unknown location, the date is based on style and the first date at that address is given in parenthesis below the first known occupant.

Original Occupant - only the name of the first known commercial tenant is given for commercial buildings, not

those of upper floors.

Current Occupant - as of February, 1989.

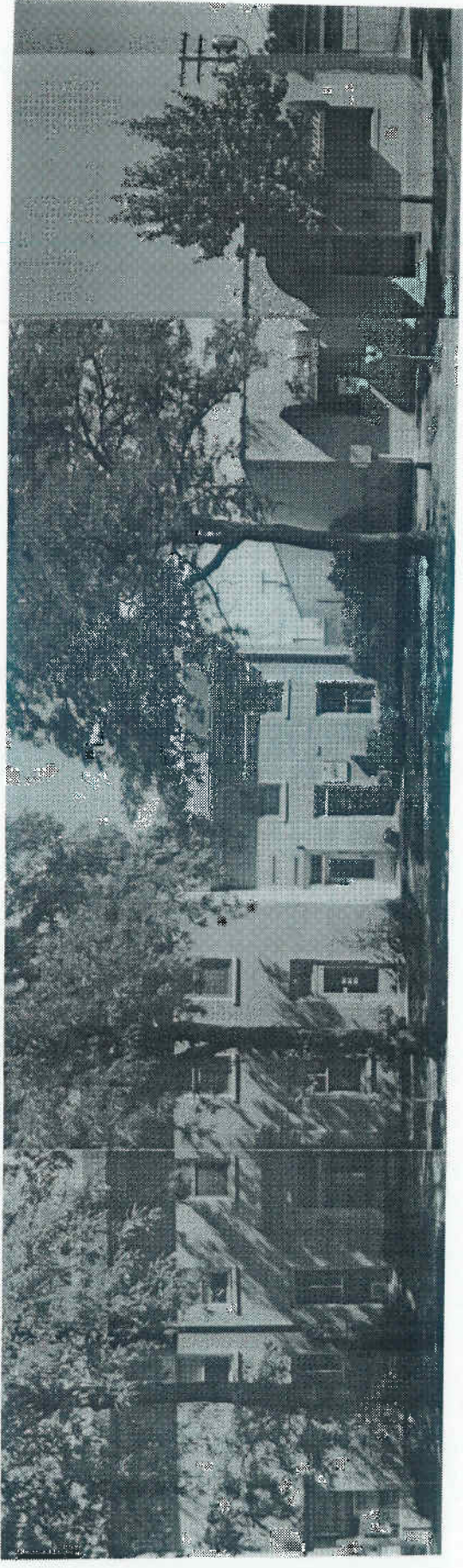
Architectural Style - where the original facade has been completely remodeled in a contemporary style, it is classified as modern.

Number of Stories - based on the appearance of the facade. Basements or hidden attics are not included.

Material - the basic material or covering of the exterior walls.

Window Type - referring only to upper stories for commercial buildings.

Special Details - distinguishing architectural features. Missing features or those that have obviously been altered are not mentioned.



*201

(N)211

EAST ANN STREET

(part II) Fourth/Ann Historic District

1836

1947

Bank of Washtenaw

Symons Bros & Co. Wholesale Grocery

apartments

Terry K. Lawrence Photography

Classical Revival

Modern

two

one

stucco over brick

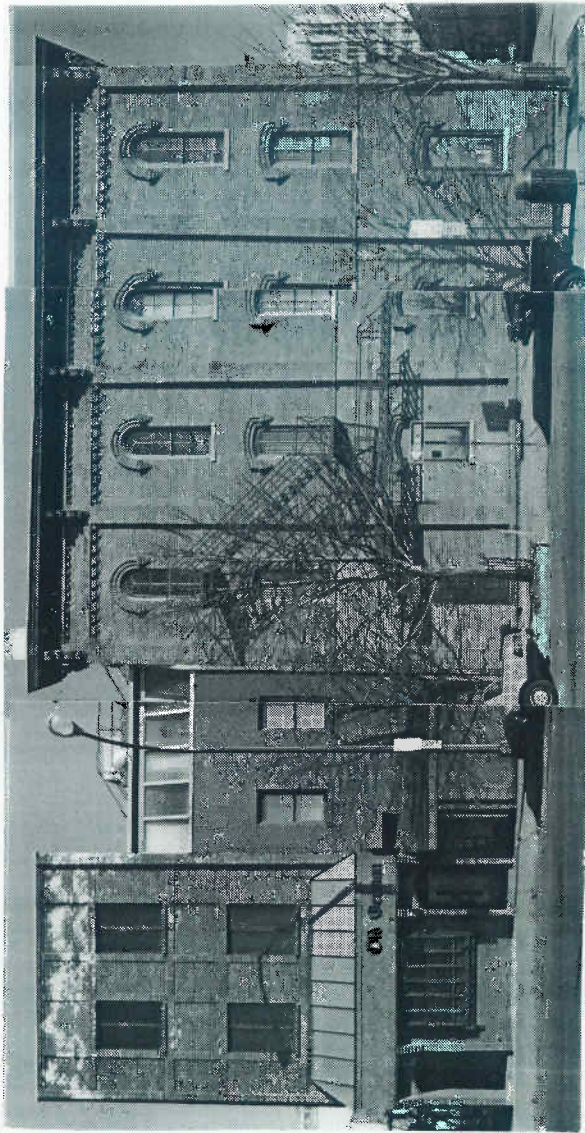
brick

double-hung, one-over-one

fixed, single panes

Classical Revival doorway

none



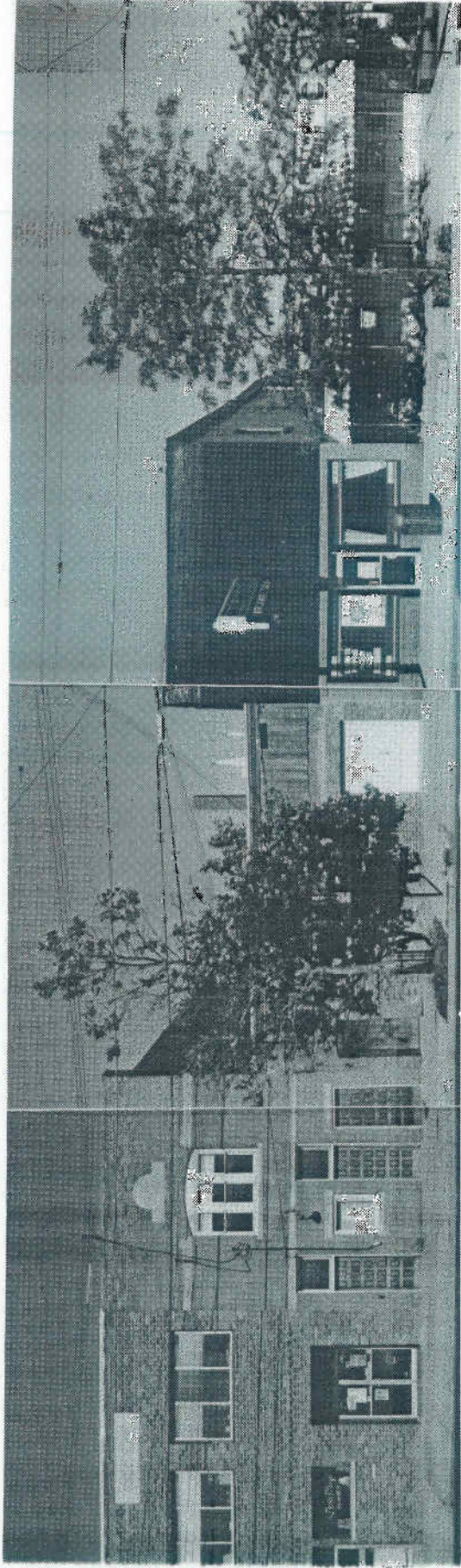
117

** (122 W. Washington)

SOUTH ASHLEY STREET

(east side, part I) Main Street Historic District

1976	c. 1940	1869
Staebler & Co. Grocers (1906)		Wagner/Schneider Building Blacksmith Shop
Old German	Del Rio Bar	Del Rio Bar
Modern (rebuilt)	Commercial Vernacular	Italianate
three	three	three
brick	brick	brick
double-hung, one-over-one	double-hung, one- over-one	double-hung, four-over-four
remodeled 1970's	none	upper and lower cornice, round and segmented stone trim, arches, pilasters



312

*310

308

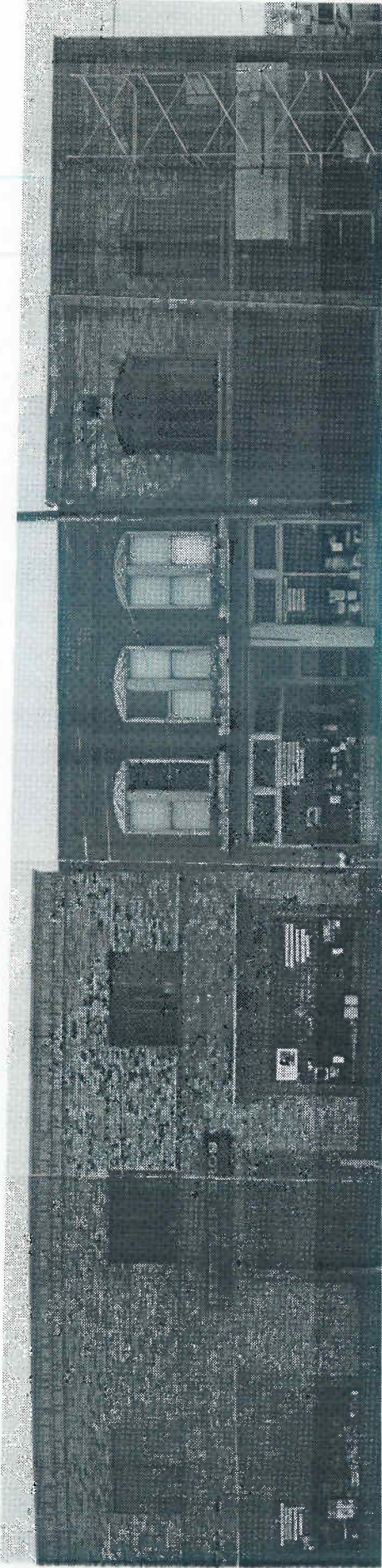
304

300

SOUTH ASHLEY STREET

(west side, part I) Main Street Historic District

	1906	1910	1906	1947
Garage	Second Ward Building	Graf & Harris sheet metal workers	Finkbinder blacksmith	Donald Reid restaurant
Annex	John & Mary Hathaway	unknown	H & R Block Income Tax	Fleetwood Diner
	Commercial Vernacular	Modern	Commercial Vernacular	Modern
	two	one	two	one
	brick	brick	brick	aluminum
single pane	double-hung, one-over-one	none	fixed, single pane	fixed, single pane
trim	plain arch, stone trim	brick cornice, plain arches	brick cornice	none



212-216

*210

208

206

SOUTH ASHLEY STREET

(west side, part II) Main Street Historic District

	1910	1899	1899	1899
Hertler Brothers Agricultural Implements	Hertler Bros.	Mamm & Zeeb Agricultural Imports	M. Schaible Tavern	Meere G. Gates Meat Market
Hertler Bros.	Hertler Bros. Hardware		vacant	vacant
Commercial Vernacular 20th Century	Commercial Vernacular 19th Century	Commercial Vernacular 19th Century	Commercial Vernacular 19th Century	Commercial Vernacular 19th Century
two	two	two	two	two
brick	brick	brick	brick	brick
Steel casement	double-hung, one-over-one	multiple panes	fixed	fixed
tapestry brick and polychrome brick	plain arches, stone trim	plain arches, stone trim	plain arches, stone trim	plain arches, stone trim



311

(N)315

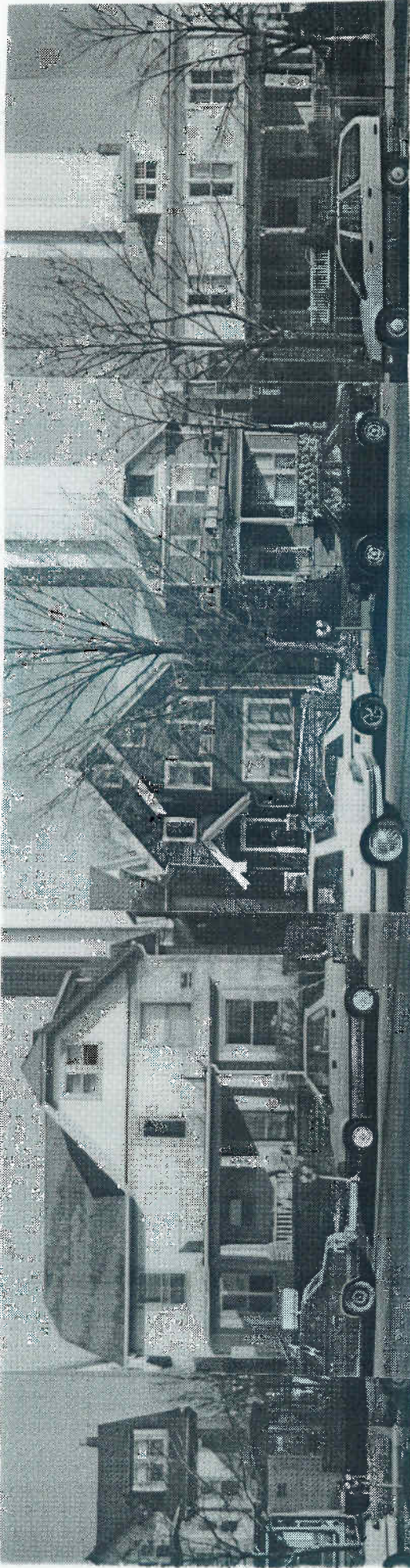
317

321

SOUTH DIVISION STREET

(east side, part I) East William Street Historic District

	1890	1890	1970's	1860's	1871
Clarken keeper	Alice Mayhew widow		apartments	Lena Rennie (1914)	Schuyler Grant cashier, Ann Arbor Savings
ance	residence	apartments	apartments	residence	residence
Anne	Queen Anne	Modern	Italianate (remodeled)	Queen Anne	Queen Anne
id-a-half	two-and-a-half	three	two	two	two-and-a-half
tt	aluminum	brick	aluminum	aluminum	Front: clapboard and cut shingles Side: asphalt
g-hung, ver-one	double-hung, one-over-one	single	double-hung, four-over- four	double-hung, four-over- four	double-hung, one-over-one
gable	front gable	flat	hipped	hipped	irregular
around	wrap-around porch	none	original upper sash	original upper sash	carved porch trim, bracketed three- story tower (1890), parlor bay, window hoods

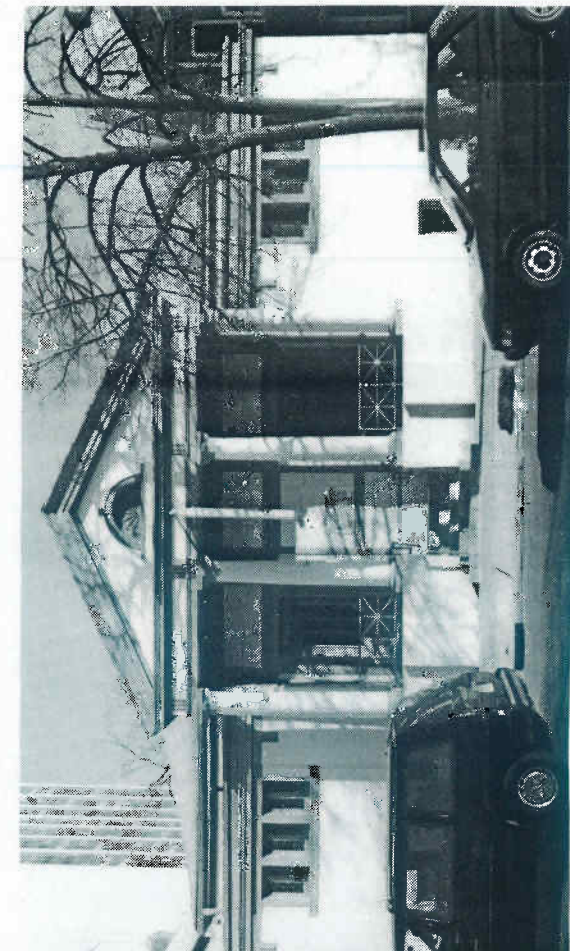
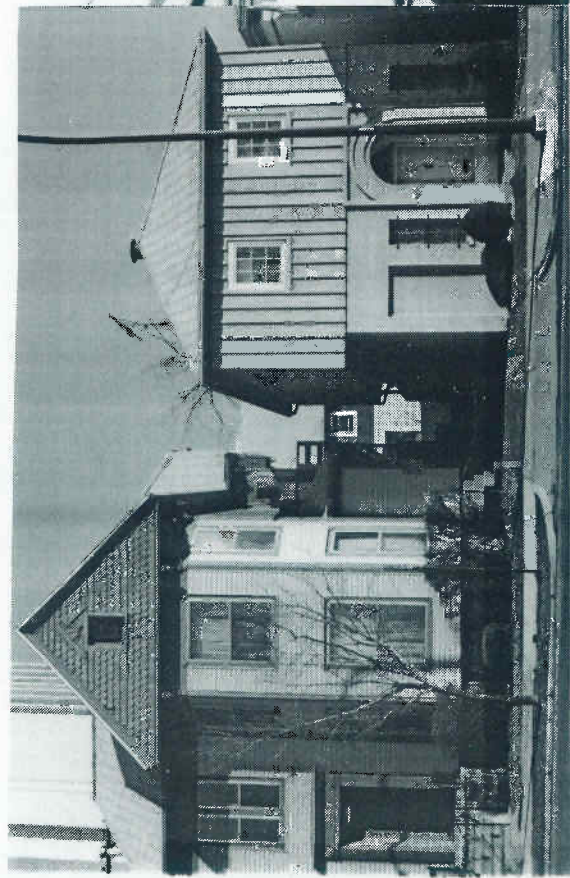


327 331-3 335 339 345

OUTH DIVISION STREET

(east side, part II) East William Street Historic District

1895	c.1895	c.1900	c.1885	(1865) 1908
l Kittredge her, <u>Ann</u> <u>Register</u>	Sellick Wood corn & fruit merchant	John W. Hastings (1929)	George L. Moore	(James C. Allen) Arthur Nichols
ance	residence	residence	residence	residence
al Revival	Vernacular	Vernacular	Queen Anne	Colonial Revival
1-a-half	two-and-a-half	two	two	two
t	clapboard	clapboard	clapboard	clapboard
-hung, one-	double-hung, one-over-one	double-hung, three-	double-hung,	paired double-hung,
ne		over-one	one-over-one	over-one
able	side gable	double front gable	front gable	hipped
round	Matching square bays, center	vertical panes in	stone base,	window hoods, full porch,
round bay,	porch, left section added by	upper sash, porch	carved porch	beveled glass, round topped
base corner	1931	canopy, terrace	gable trim	front window



401

403

*409

SOUTH DIVISION STREET

(east side, part III) East William Street Historic District

1886

Elom S. Worden

residence

Queen Anne

two-and-a-half

wood shingle

double-hung, one-over-one

cross-gable

fish scale shingling on front gable

1927

Earl Weitzel
motorman

residence

Modern

two

brick

multi-paned,
fixed

hipped

round over door arch front

1913

First Church Christ Scientist

Friendship Baptist Church

Colonial Revival/Prairie Style

one

concrete

double-hung

center gable

classical detailing



410

SOUTH DIVISION STREET

1897

Verner L. Snauble
bookkeeper Michigan Furniture Co.

residence

Colonial Revival

two-and-a-half?

asphalt shingle

double-hung, one-over-one

front gable

none



*400 (340 E. William)

(west side, part I) East William Street Historic District

1860

Peleg & Arthur Marshall
carpenter/builder & architect

Raja Rani
restaurant

Second Empire

two-and-a-half

clapboard

double-hung, one-over-one

mansard

elaborately carved brackets, dentils, dormers
with round topped windows, corner pilasters



*344

340

336

332

SOUTH DIVISION STREET

(west side, part II)

East William Street Historic District

1965

1919

1924

c.1875

Dahlmann Apartments

Ross Granger
City Treasurer

John W. Hastings
plumber

Elizabeth J. Hyde

apartments

residence

residence

residence

Modern

Vernacular

Craftsman

Italianate

three-and-a-half

two

two

two

brick

clapboard

wood shingle

stucco

metal sliding

fixed, single pane

double-hung,
five-over-one

double-hung,
one-over-one

flat

front gable

hipped

front gable

none

front porch, trim board
over upper windows

front porch, vertical
panes in upper sash,
hipped roof dormers

triple & paired
windows, bays on
sides and front



322

*320

**312

SOUTH DIVISION STREET

(west side, part III)

East William Street Historic District

1892

Noble Carriage House

Alfred L. Noble
owner, Starr Clothing House

residence

residence

Second Empire

Queen Anne

two

three

asbestos

brick

double-hung, one-over-one

mansard

hipped

decorative chimneys, arched upper sash,
carved wood details on porches, verge
boards, gable corners, brackets, eaves

1853

Henry DeWitt Bennett
Secretary and Steward, U-M

Kempf House Center for Local History

Greek Revival

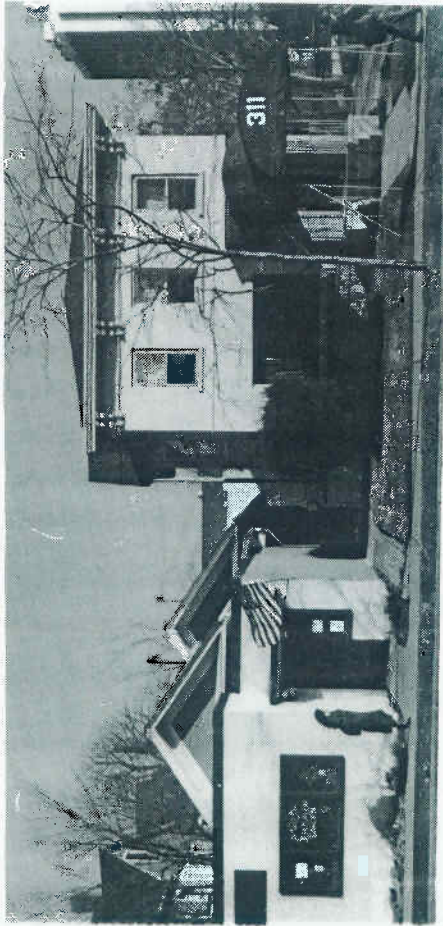
one-and-a-half

clapboard

double-hung, six-over-six

front gable

portico with full pediment and square
antapiers, anthemion pattern cast iron
window grilles



307

311

311 1/2

SOUTH FIFTH AVENUE

(east side, part I) East Liberty Historic Block

1914

1866

1914

Dr. Louis Rominger
office

Jacob F. Schuh,
Hardware (by 1892)

Dr. Elsie S. Pratt
Physician

Jerusalem Gardens
Restaurant

Karen DeKoning
Interior Decoration

residence

Classic Revival

Italianate

Bungalow

one

two

one and a half

concrete block, stucco

painted brick

stucco

hidden by storefront

double-hung, one over-one

double-hung, one-over-one

flat, front gable

hipped

side gable

gable returns

double brackets, bay window

recessed porch



403

21ST AVENUE (east side, part II)

1894

William J. Merkle, sec./treasurer,
Krause Tanning Co.

residence

Queen Anne

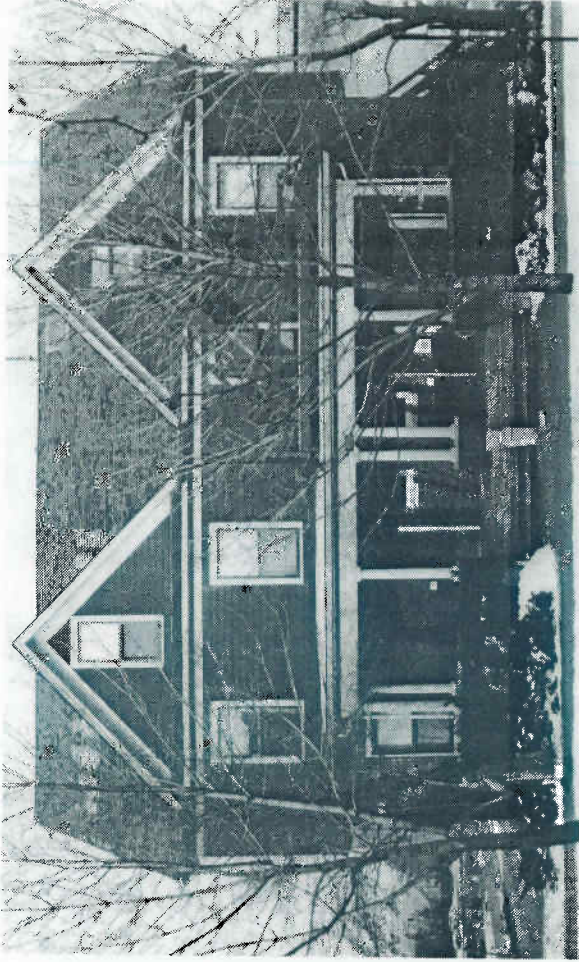
two-and-a-half

wood

double-hung, one-over-one

hipped

bracketed gable, king post trim, window
hoods, Colonial porch



402-4 (214 E. William)

East William Street Historic District ; (west side, part I)

1883

George E. Bliss, baggageman
Lauren L. Henion, travel agent

residence (Needlepointe Tree)

Colonial Revival

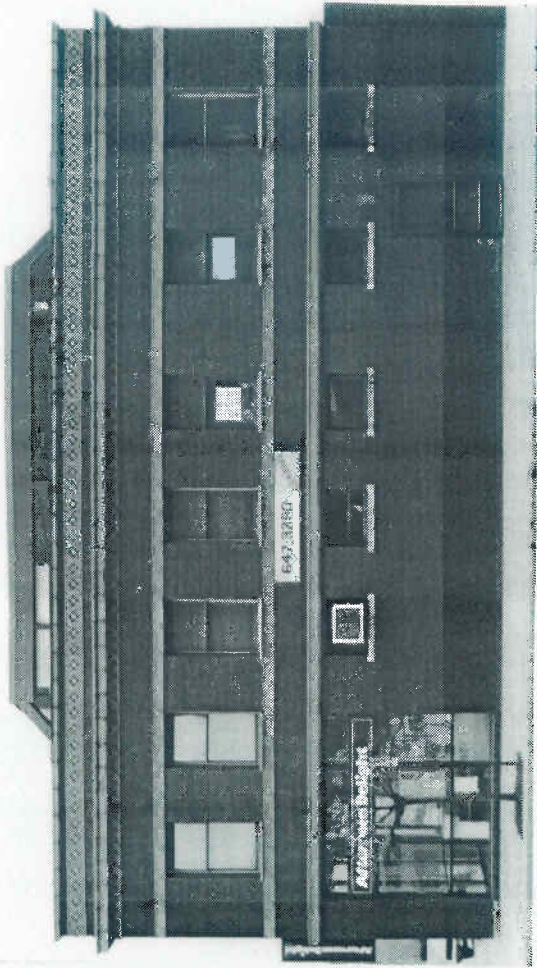
two-and-a-half

brick and wood shingle

double-hung, one-over-one

side gabled

double colonial porch



221-93

SOUTH FIFTH AVENUE (west side, part II) Main Street Historic District

1917

Bunting Dentists; Mackenzie, Washburn & Darling Physicians

East Liberty Plaza ---various tenants

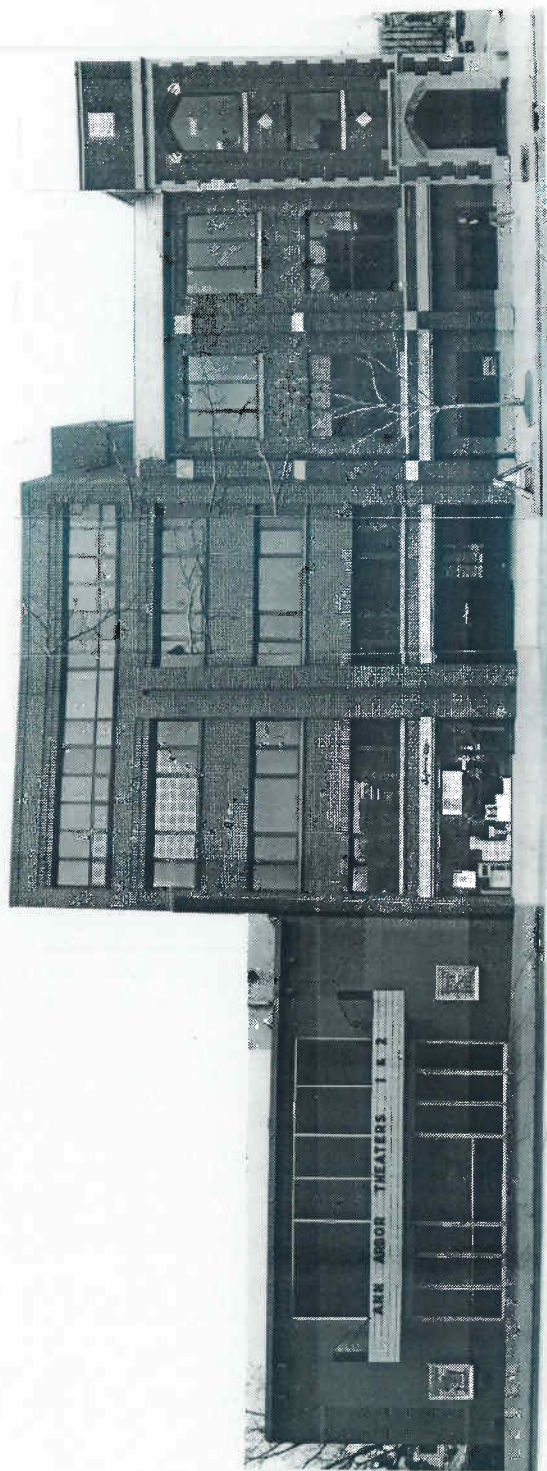
Commercial Palace

two

brick

single

upper cornice, stone trim, terracotta, tapestry brick



(N)208-10

(N)206

(220 E. Washington)

SOUTH FIFTH AVENUE

(west side, part III)

Main Street Historic District

1960's

c.1980

1927

The Fifth Forum Movie Theater

Federal Center

Salvation Army

Ann Arbor (Movie) Theatre

Federal Center

Artrain

Modern

Modern

Collegiate Gothic

two

five

three

brick

brick

brick

fixed pane

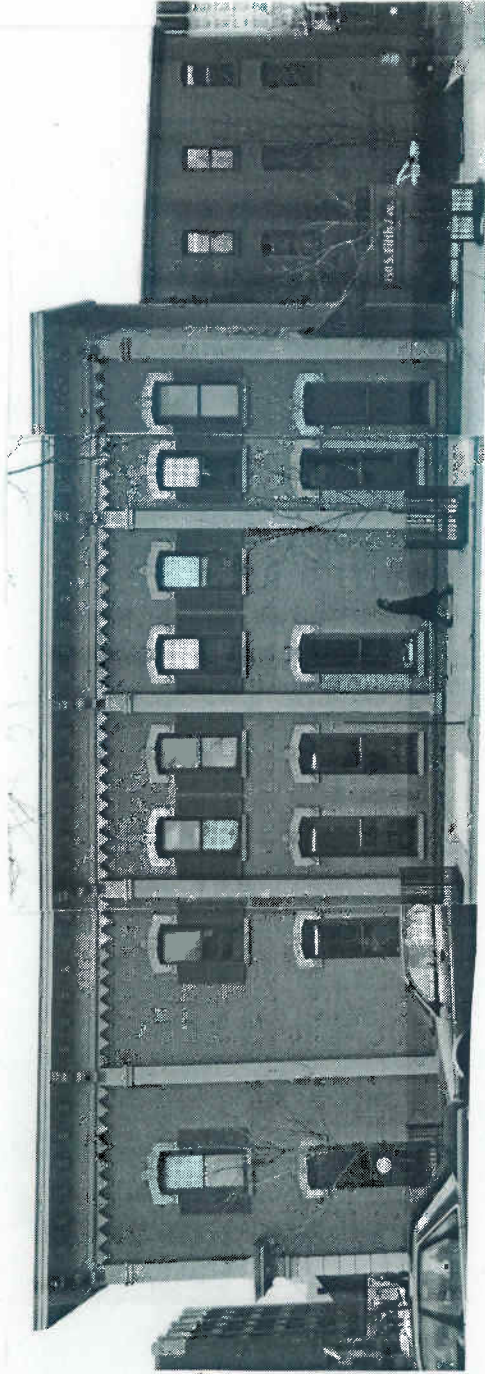
fixed pane

fixed pane

none

none

stone trim,
buttresses,
quoins



****120(219-23 E. Washington)**

SOUTH FIFTH AVENUE (west side, part IV) Main Street Historic District

1870's

Ja. Brown Groceries

rental complex---various tenants

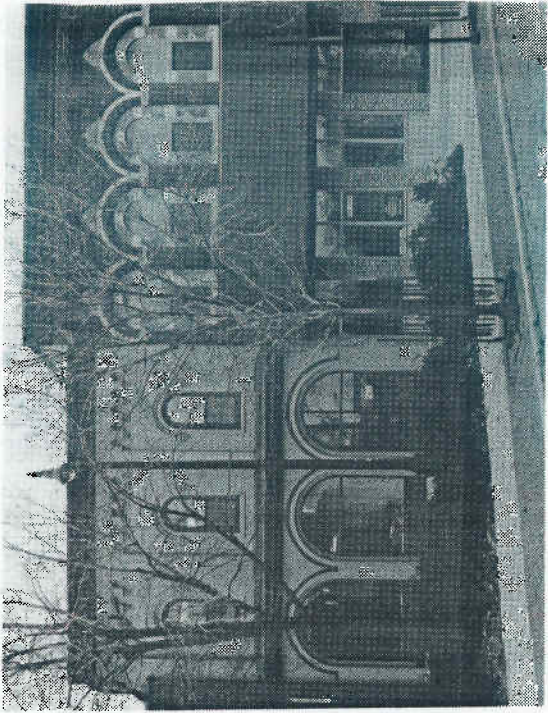
Italianate

two

brick

double-hung, one-over-one

upper cornice, round arches, pilasters, stone trim



218

214

NORTH FOURTH AVENUE

(east side, part I) Fourth/Ann Historic District

1870's

Eisele Grocers

Fera

Italianate

two

brick

double-hung, one-over-one

round arches

1888

Zachman's Meat Market

Eyemedea

Late Italianate

two

brick

double-hung, one-over-one

round arches, stone trim, pilasters



212

210-208

*206

*200

NORTH FOURTH AVENUE

(east side, part II) Fourth/Ann Historic District

1894	1895	1880's	1835
le Block	J. Eisele Groceries Kenny & Quinlan Plumbers	Arlington Block	Bank of Washtenaw
le's Food Coop.	Wildflower Community Bakery	Crazy Wisdom	Wooden Spoon Books
Romanesque	Late Romanesque	Commercial Vernacular	Classic Revival
k	two	two	two
d, single pane	brick, stone	scored stucco over brick	scored stucco over brick
r cornice, wide arch	double-hung, one-over-one	double-hung, one-over-one	double-hung, one-over-one
	wide arches, stone pilasters	upper cornice	upper cornice



-6 120 118 116
 NORTH FOURTH AVENUE

(east side, part III) Fourth/Ann Historic District

**106

1895	1922	1941	1915	1927
Block	Kerr Block Printers	Ann Arbor Federal	YMCA	Washtenaw Abstract Co.
0	Park Shoe	Michigan Guild	First Y Building	Lawyer's Title Insurance
1	Commercial Vernacular	Comm. Vernac.	Beaux-Arts	Art Deco
	two	two	three-and-a-half	two
	brick	brick	brick	Limestone
ng, one	double-hung, one-over-one	double-hung, one-over-one	double-hung, two-over-two	fixed and multi-sash
rim, arches	stone trim, tapestry brick arches	aluminum mullions	brick cornice, stone trim, arches	bronze and stone trim



201-207

**209-211

NORTH FOURTH AVENUE

(west side) Fourth/Ann Historic District

1930

Washtenaw Mutual Oil Co.

Shodo Corp.

Asian Martial Arts Studio

Tudor Revival with Modern
front addition

two (rear)

brick

fixed, single pane

chimney, half-timbering

1899

Kayser Block

Vacant

Hall's Barber shop

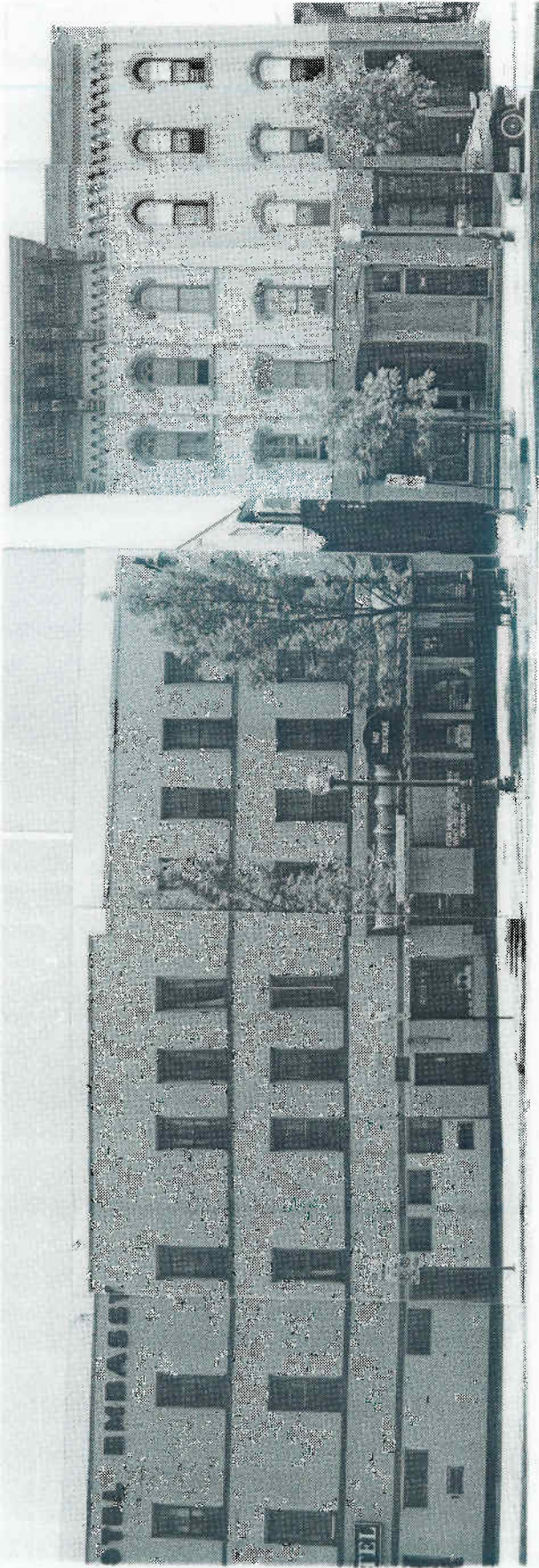
Commercial Vernacular

three

brick

double-hung, one-over-one

brick cornice, tapestry brick



(200 E. Huron)

**111

113

SOUTH FOURTH AVENUE

(east side, part I)

Main Street Historic District

b.1853

Slawson & Geer
groceries and provisions

Embassy Hotel

Italianate (covered)

three

metal facing

double-hung, one-over-one

none

1870's

Heinrich Bldg.
Maulbetsch Saloon

DeLoof Limited

Italianate

three

brick

double-hung, four-over-
four

upper cornice, round &
segmented arches, stone
trim

b.1892

Seybold Blacksmith

vacant

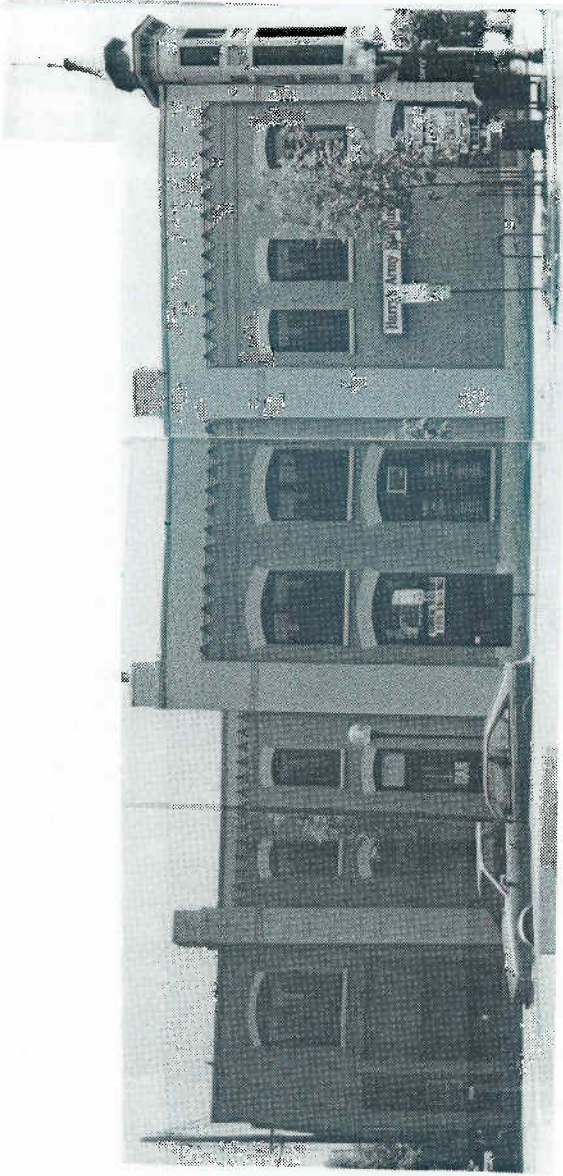
Italianate

three

brick

double-hung, one-over-one

round and segmented arches,
stone trim



*117-19 (201 E. Washington)

SOUTH FOURTH AVENUE

(east side, part II) Main Street Historic District

1892

Hutzel Meats

Custom Design

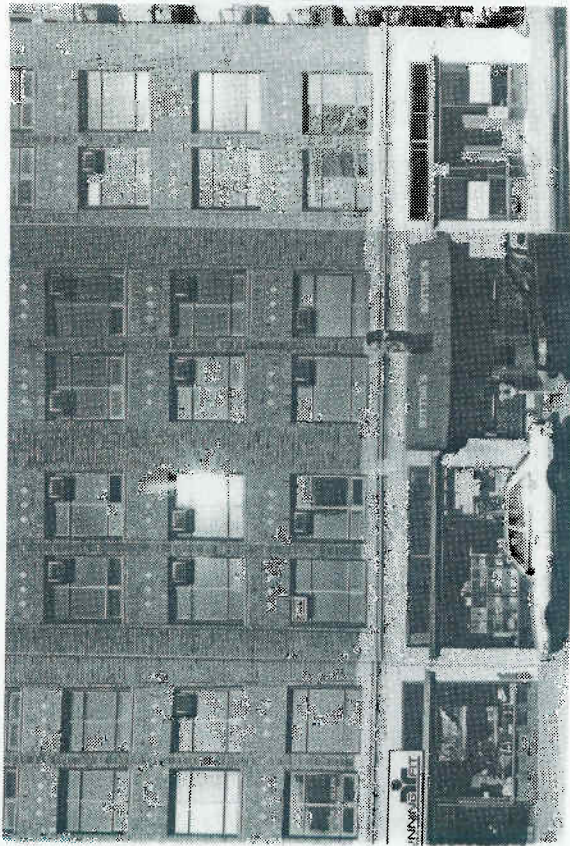
19th Century Romanesque

two

brick

double-hung, one-over-one

brick cornice, plain arch, stone trim, tower



*201-207

209 211

213

215

SOUTH FOURTH AVENUE

(east side, part III) Main Street Historic District

1928

1897

1899

1888

1888

Ann Building

O.M. Martin undertaker

Robison & Co. Carriage Livery Room

Ann Arbor Steam Laundry

Ann Arbor Steam Laundry

Commercial Vernacular

House of Sandwich

Capitol Market

vacant

Commercial Vernacular

Commercial Vernacular

Commercial Vernacular

Commercial Vernacular

brick

two

two

two

two

brick

brick

brick

brick

brick

brick, with small hoppers

multi-paned

single pane

single pane

single pane

brick, stone trim, lower cornice

brick cornice

brick cornice

plain arches

