



# CITY OF ANN ARBOR PROJECT MANAGEMENT

## HURON PARKWAY SEGMENTAL BLOCK WALL REHABILITATION

CITY OF ANN ARBOR FILE NO. 2015-024  
ITB No. 4473

THE CONSTRUCTION COVERED BY THESE PLANS SHALL CONFORM TO THE CITY OF ANN ARBOR PUBLIC SERVICES DEPARTMENT STANDARD SPECIFICATIONS WHICH ARE INCLUDED BY REFERENCE.



REV.	DESCRIPTION	DATE	DRAWN	CHECKED
1	HURON PARKWAY TITLE SHEET	3/17/16	VCG	CEW

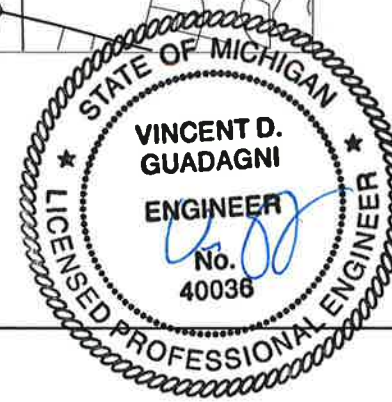
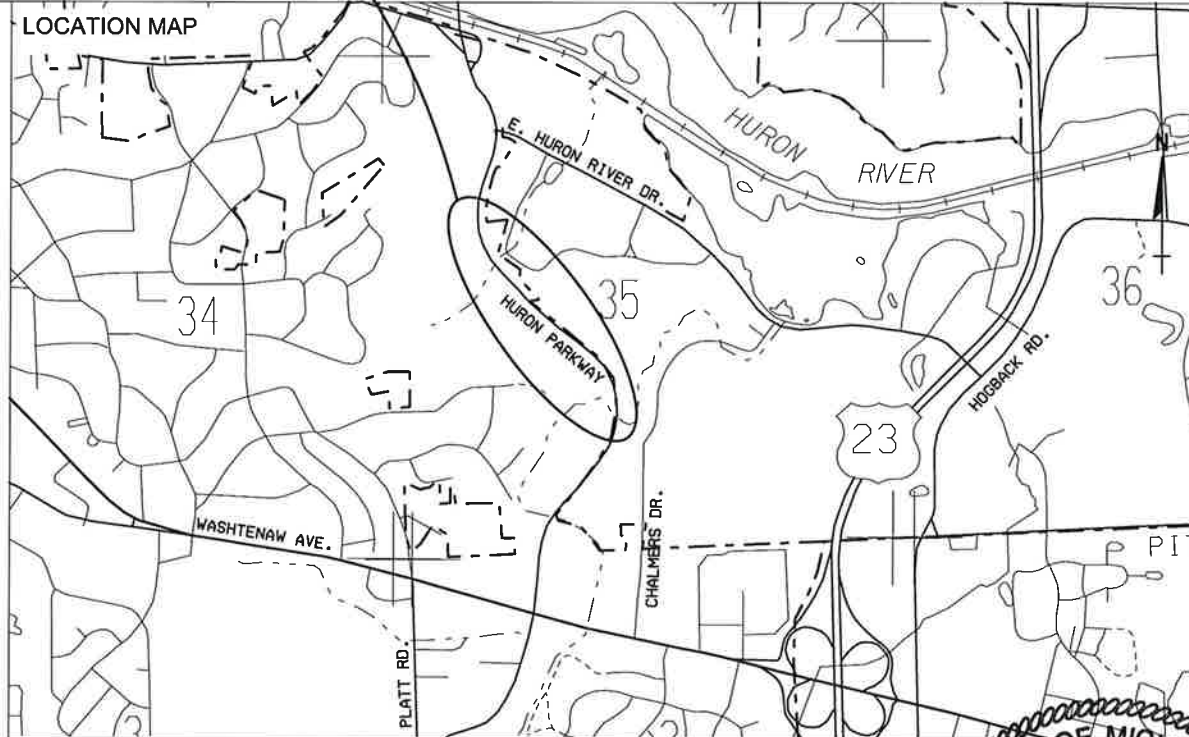


### SHEET INDEX

- 1 TITLE SHEET
- 2 NOTES AND LOCATION
- 3-8 MAINTENANCE OF TRAFFIC
- 9 WALL DETAILS
- 10-12 WALL ELEVATIONS

PROJECT LOCATION

LOCATION MAP



CONTRACT FOR:  
CLEAN, REMOVE EFFLORESCENCE FROM, AND SEAL SEGMENTAL BLOCK WALLS, AND REPLACE SELECTED CAP BLOCKS.



### PROJECT MANAGEMENT SERVICE UNIT

MICHAEL NEARING, P.E. - MI LICENSE No. 38748  
PROJECT ENGINEER

DATE

PREPARED UNDER THE SUPERVISION OF

VINCENT GUADAGNI, P.E. - MI LICENSE No. 40036  
PROJECT MANAGER

3-18-16

DATE

PROJECT DESCRIPTION  
HURON PARKWAY SEGMENTAL BLOCK WALL REHABILITATION

DRAWING No. 2015024-C1

SHEET No.  
1 OF 12

**GENERAL NOTES**

CAP BLOCKS SHOWN ON PLANS TO BE REMOVED AND REPLACED HAVE BEEN SELECTED BASED ON THEIR CURRENT CONDITION. ADDITIONAL BLOCKS MAY BE SELECTED FOR REMOVAL BY THE CONSTRUCTION ENGINEER DURING CONSTRUCTION. ADDITIONAL UNITS SHALL BE PAID FOR PER THE UNIT BID PRICE.

THE CONTRACTOR SHALL SELECT A CLEANING SOLUTION THAT IS EFFECTIVE IN REMOVING EFFLORESCENCE AND STAINING WITHOUT CONTAINING A MURIATIC ACID SOLUTION.

ALL VEGETATION AND NATURAL AREAS WITHIN THE WORK ZONE SHALL BE PROTECTED IN PLACE.

ALL SIDEWALKS, LAWNS AND ROADWAYS ADJACENT TO BLOCK WALLS SHALL BE LEFT FREE OF DEBRIS AFTER EACH DAY'S WORK.

ALL WORK TO CLEAN SURFACES AND REPLACE BLOCKS ON WALLS AB, CD, E AND F SHALL BE PERFORMED UNDER THE PROTECTION OF A SINGLE LANE CLOSURE.

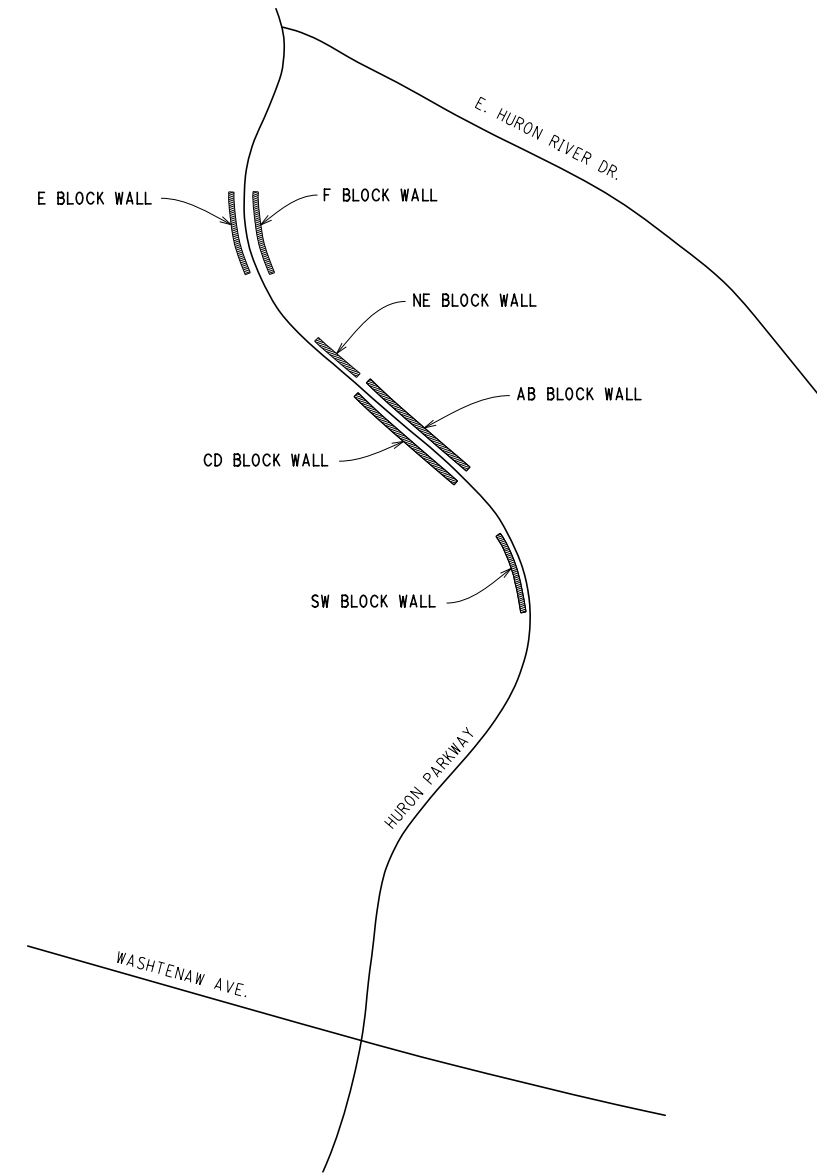
THE CONTRACTOR SHALL ONLY OPERATE THE LANE CLOSURE FROM 9:00 A.M. TO 4:00 P.M. MONDAY THROUGH FRIDAY.

**CONSTRUCTION QUANTITIES**

1	LSUM	GENERAL CONDITIONS
1490	FT	SEGMENTAL BLOCK WALL CAP BLOCKS, REMOVE AND REPLACE
50	SFT	SEGMENTAL BLOCK WALL PRE-CLEANING TEST SECTION
930	SYD	SEGMENTAL BLOCK WALL CLEANING
1000	SFT	SEGMENTAL BLOCK WALL EFFLORESCENCE REMOVAL
930	SYD	SEGMENTAL BLOCK WALL SEALING

**MAINTENANCE OF TRAFFIC QUANTITIES**

1	LSUM	MINOR TRAFFIC DEVICES
20	EA	BARRICADE, TYPE III, HIGH INTENSITY, DOUBLE SIDED, LIGHTED, FURN
20	EA	BARRICADE, TYPE III, HIGH INTENSITY, DOUBLE SIDED, LIGHTED, OPER
1	EA	LIGHTED ARROW, TYPE C, FURN
1	EA	LIGHTED ARROW, TYPE C, OPER
450	FT	PAVT MRKG, WET REFLECTICE TYPE R, TAPE, WHITE, TEMP
95	EA	CHANNELIZING DEVICE, 42 INCH, FURN
95	EA	CHANNELIZING DEVICE, 42 INCH, OPER
5	EA	SIGN COVER
427	SFT	SIGN, TYPE B, TEMP, PRISMATIC, FURN
427	SFT	SIGN, TYPE B, TEMP, PRISMATIC, OPER



**BLOCK WALL LOCATION MAP**  
ANN ARBOR, MI



1	HURON PARKWAY NOTES AND LOCATION SHEET	03/17/16	VOS	CEN
REV.	DESCRIPTION	DATE	DRAWN	CHECKED

CITY OF ANN ARBOR  
PUBLIC SERVICES  
301 W. WASHINGTON STREET  
ANN ARBOR, MI 48101-4847  
www.a2gov.org

**PROJECT MANAGEMENT - PUBLIC SERVICES - CITY OF ANN ARBOR**

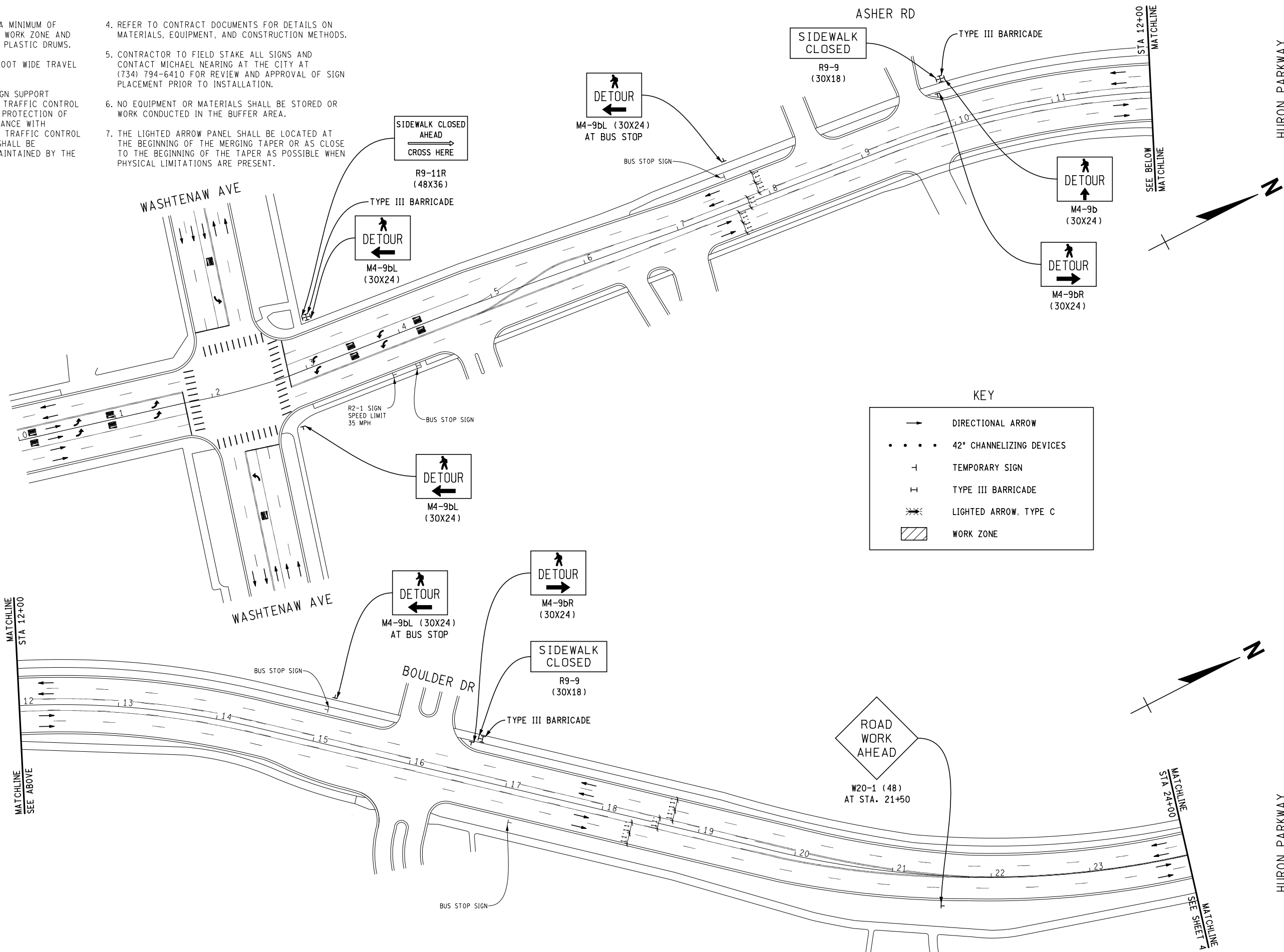
PROJECT DESCRIPTION  
**HURON PARKWAY SEGMENTAL BLOCK WALLS REHABILITATION**

DRAWING No. 2015024-C2

NOTES AND LOCATION

**NOTES:**

- CONTRACTOR SHALL PROVIDE A MINIMUM OF 3-FOOT SEPARATION BETWEEN WORK ZONE AND TRAVEL LANES TO ALLOW FOR PLASTIC DRUMS.
- MAINTAIN A MINIMUM OF 11-FOOT WIDE TRAVEL LANES.
- THE NECESSARY SIGNS AND SIGN SUPPORT STANDARDS, BARRICADES, AND TRAFFIC CONTROL DEVICES NECESSARY FOR THE PROTECTION OF TRAFFIC SHALL BE IN ACCORDANCE WITH MICHIGAN MANUAL ON UNIFORM TRAFFIC CONTROL DEVICES. ALL SUCH DEVICES SHALL BE FURNISHED, INSTALLED, AND MAINTAINED BY THE CONTRACTOR.
- REFER TO CONTRACT DOCUMENTS FOR DETAILS ON MATERIALS, EQUIPMENT, AND CONSTRUCTION METHODS.
- CONTRACTOR TO FIELD STAKE ALL SIGNS AND CONTACT MICHAEL NEARING AT THE CITY AT (734) 794-6410 FOR REVIEW AND APPROVAL OF SIGN PLACEMENT PRIOR TO INSTALLATION.
- NO EQUIPMENT OR MATERIALS SHALL BE STORED OR WORK CONDUCTED IN THE BUFFER AREA.
- THE LIGHTED ARROW PANEL SHALL BE LOCATED AT THE BEGINNING OF THE MERGING TAPER OR AS CLOSE TO THE BEGINNING OF THE TAPER AS POSSIBLE WHEN PHYSICAL LIMITATIONS ARE PRESENT.



CEW	CHECKED
VCG	DRAWN
03/17/16	DATE
HURON PARKWAY MAINTENANCE OF TRAFFIC	DESCRIPTION
1	REV.
CITY OF ANN ARBOR PUBLIC SERVICES DEPARTMENT 300 EAST HURON STREET ANN ARBOR, MI 48106-0687 www.a2gov.org	
<b>PROJECT MANAGEMENT - PUBLIC SERVICES - CITY OF ANN ARBOR</b> <b>HURON PARKWAY SEGMENTAL BLOCK WALLS REHABILITATION</b> <b>MAINTENANCE OF TRAFFIC</b>	
DRAWING No. 2015024-MT1	
SHEET No. 3 OF 12	

**MAINTENANCE OF TRAFFIC - STAGE 1**  
SCALE: 1" = 100'

Z:\2015\150773\CAD\CD\150772-3 Dwg Created: 02-10-16

HURON PARKWAY

HURON PARKWAY

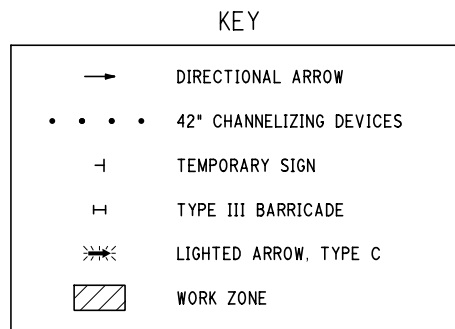
HURON PARKWAY

HURON PARKWAY

Z:\2015\150773\CAD\CD\150772-4 Dwg Created: 02-10-16

HURON PARKWAY

HURON PARKWAY



**WORK ZONE BEGINS**  
R5-18c (48X48)  
AT STA. 25+00

**END ROAD WORK**  
G20-2 (48X24)  
AT STA. 25+00

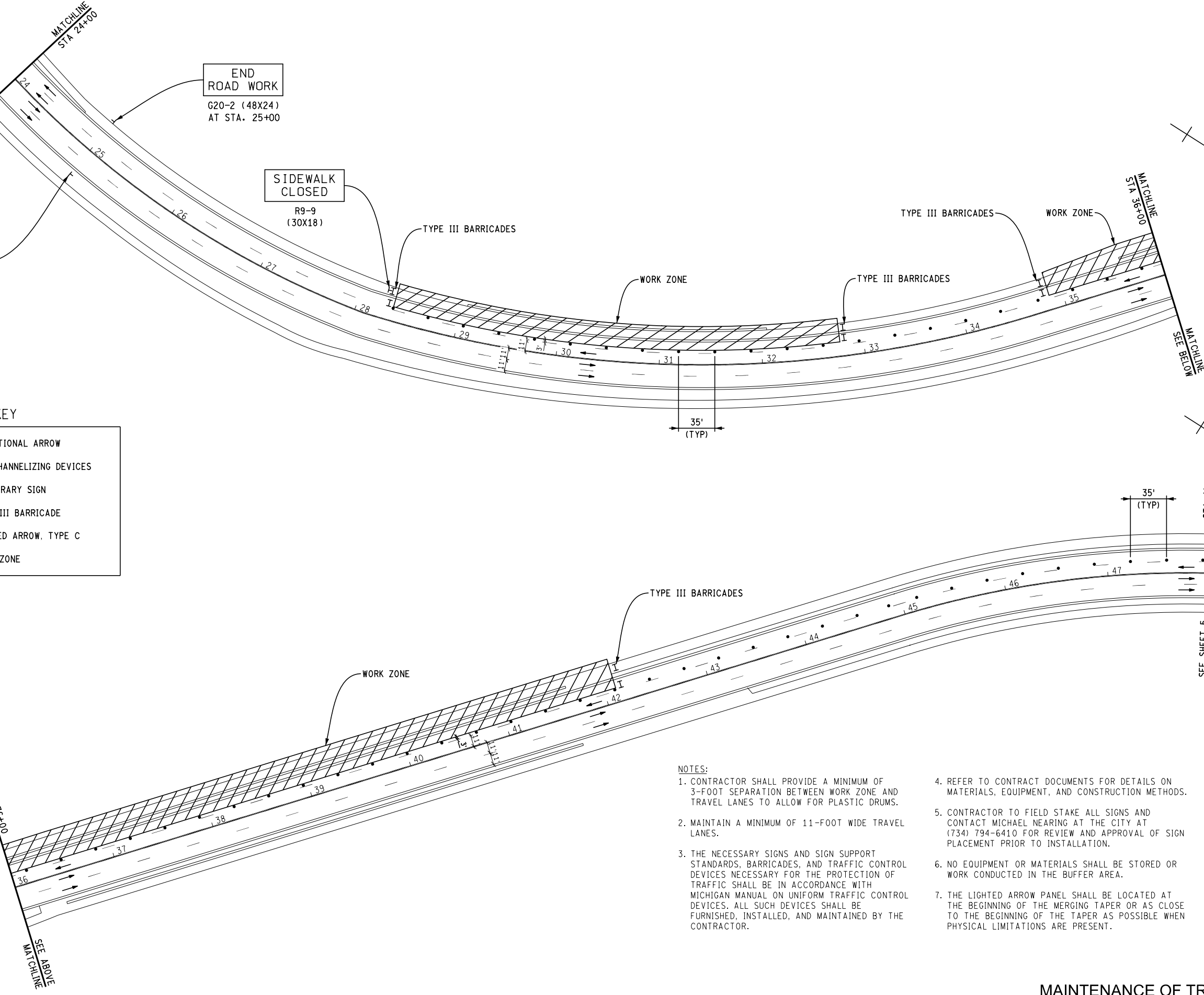
**SIDEWALK CLOSED**  
R9-9 (30X18)

MATCHLINE STA 24+00  
MATCHLINE SEE SHEET 3

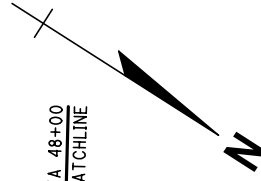
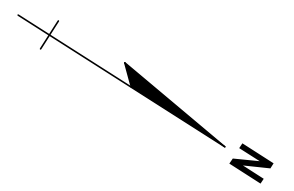
MATCHLINE STA 36+00  
MATCHLINE SEE BELOW

MATCHLINE STA 36+00  
MATCHLINE SEE ABOVE

STA 48+00 MATCHLINE  
SEE SHEET 5 MATCHLINE



- NOTES:**
- CONTRACTOR SHALL PROVIDE A MINIMUM OF 3-FOOT SEPARATION BETWEEN WORK ZONE AND TRAVEL LANES TO ALLOW FOR PLASTIC DRUMS.
  - MAINTAIN A MINIMUM OF 11-FOOT WIDE TRAVEL LANES.
  - THE NECESSARY SIGNS AND SIGN SUPPORT STANDARDS, BARRICADES, AND TRAFFIC CONTROL DEVICES NECESSARY FOR THE PROTECTION OF TRAFFIC SHALL BE IN ACCORDANCE WITH MICHIGAN MANUAL ON UNIFORM TRAFFIC CONTROL DEVICES. ALL SUCH DEVICES SHALL BE FURNISHED, INSTALLED, AND MAINTAINED BY THE CONTRACTOR.
  - REFER TO CONTRACT DOCUMENTS FOR DETAILS ON MATERIALS, EQUIPMENT, AND CONSTRUCTION METHODS.
  - CONTRACTOR TO FIELD STAKE ALL SIGNS AND CONTACT MICHAEL NEARING AT THE CITY AT (734) 794-6410 FOR REVIEW AND APPROVAL OF SIGN PLACEMENT PRIOR TO INSTALLATION.
  - NO EQUIPMENT OR MATERIALS SHALL BE STORED OR WORK CONDUCTED IN THE BUFFER AREA.
  - THE LIGHTED ARROW PANEL SHALL BE LOCATED AT THE BEGINNING OF THE MERGING TAPER OR AS CLOSE TO THE BEGINNING OF THE TAPER AS POSSIBLE WHEN PHYSICAL LIMITATIONS ARE PRESENT.

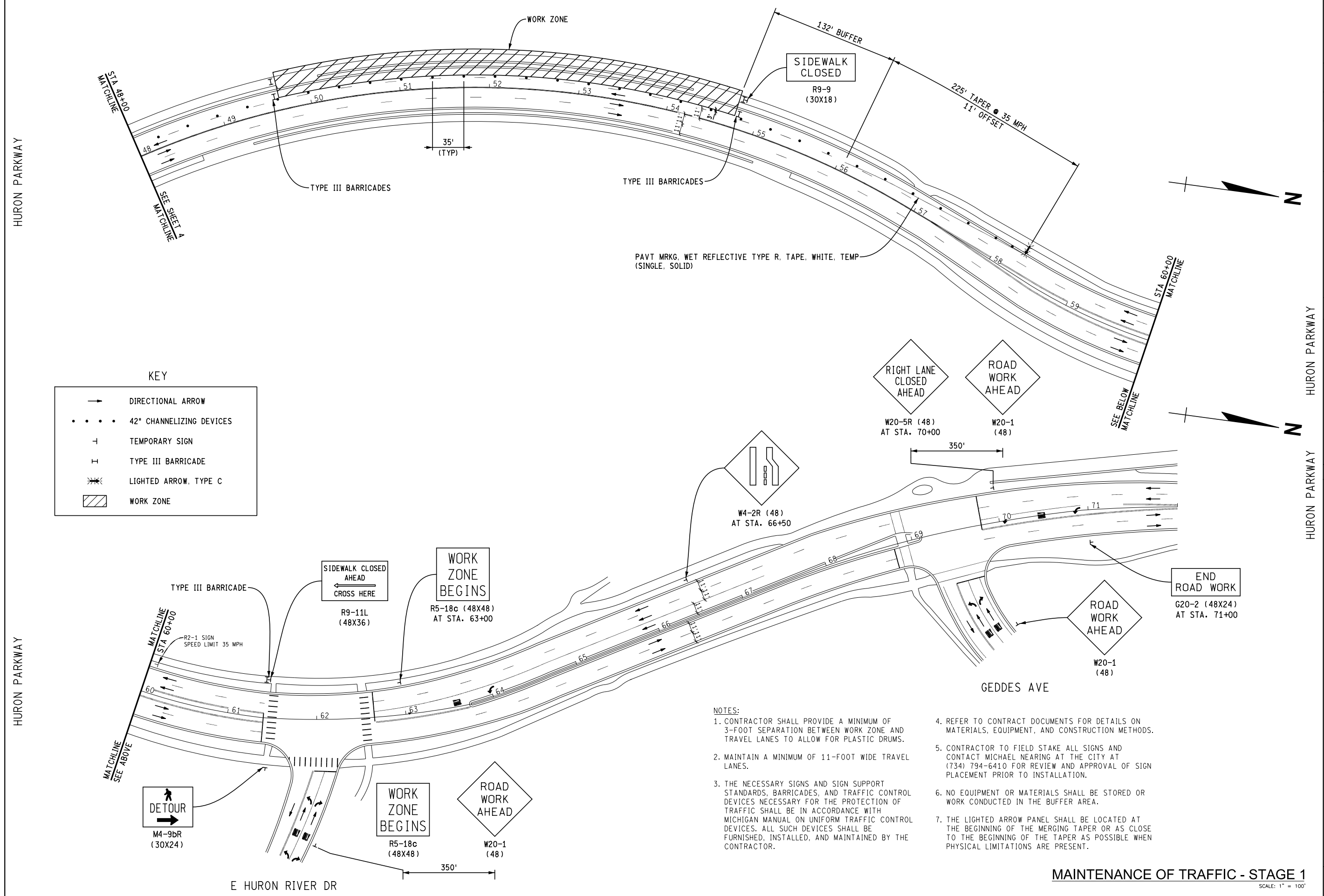


HURON PARKWAY

HURON PARKWAY

CEW	CHECKED
VDC	DRAWN
03/17/16	DATE
HURON PARKWAY MAINTENANCE OF TRAFFIC	DESCRIPTION
1	REV.
<p>CITY OF ANN ARBOR 301 EAST HURON STREET ANN ARBOR, MI 48106-0687 www.a2gov.org</p>	
<p><b>PROJECT MANAGEMENT - PUBLIC SERVICES - CITY OF ANN ARBOR</b></p> <p><b>HURON PARKWAY SEGMENTAL BLOCK WALLS REHABILITATION</b></p> <p><b>MAINTENANCE OF TRAFFIC</b></p>	
DRAWING No.	2015024-MT2
SHEET No.	4 OF 12

Z:\2015\150773\CAD\CD\150772-5 Dwg Created: 02-10-16



**KEY**

- DIRECTIONAL ARROW
- • • • 42" CHANNELIZING DEVICES
- ⊥ TEMPORARY SIGN
- ⊥ TYPE III BARRICADE
- ⚡ LIGHTED ARROW, TYPE C
- ▨ WORK ZONE

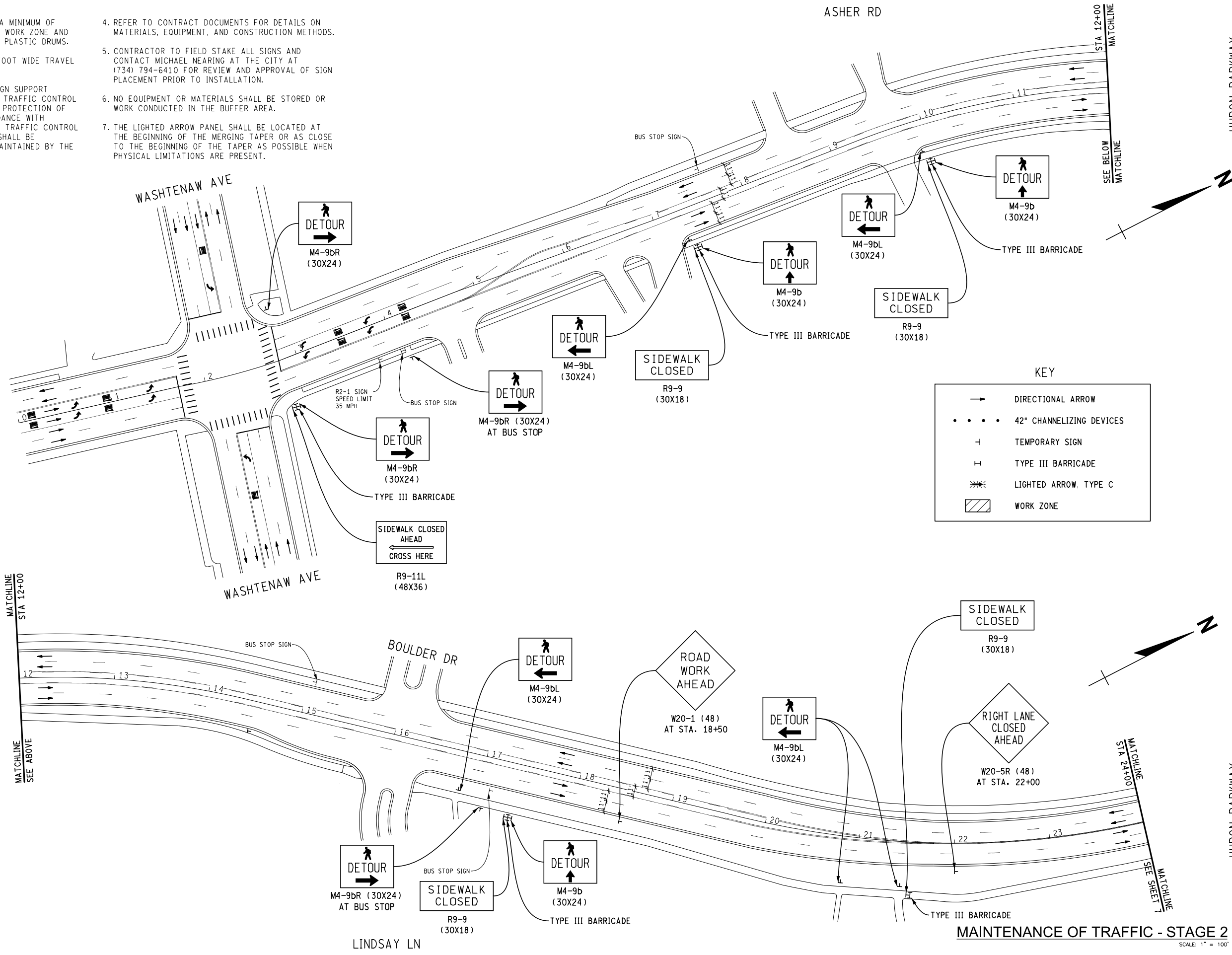
- NOTES:**
- CONTRACTOR SHALL PROVIDE A MINIMUM OF 3-FOOT SEPARATION BETWEEN WORK ZONE AND TRAVEL LANES TO ALLOW FOR PLASTIC DRUMS.
  - MAINTAIN A MINIMUM OF 11-FOOT WIDE TRAVEL LANES.
  - THE NECESSARY SIGNS AND SIGN SUPPORT STANDARDS, BARRICADES, AND TRAFFIC CONTROL DEVICES NECESSARY FOR THE PROTECTION OF TRAFFIC SHALL BE IN ACCORDANCE WITH MICHIGAN MANUAL ON UNIFORM TRAFFIC CONTROL DEVICES. ALL SUCH DEVICES SHALL BE FURNISHED, INSTALLED, AND MAINTAINED BY THE CONTRACTOR.
  - REFER TO CONTRACT DOCUMENTS FOR DETAILS ON MATERIALS, EQUIPMENT, AND CONSTRUCTION METHODS.
  - CONTRACTOR TO FIELD STAKE ALL SIGNS AND CONTACT MICHAEL NEARING AT THE CITY AT (734) 794-6410 FOR REVIEW AND APPROVAL OF SIGN PLACEMENT PRIOR TO INSTALLATION.
  - NO EQUIPMENT OR MATERIALS SHALL BE STORED OR WORK CONDUCTED IN THE BUFFER AREA.
  - THE LIGHTED ARROW PANEL SHALL BE LOCATED AT THE BEGINNING OF THE MERGING TAPER OR AS CLOSE TO THE BEGINNING OF THE TAPER AS POSSIBLE WHEN PHYSICAL LIMITATIONS ARE PRESENT.

**MAINTENANCE OF TRAFFIC - STAGE 1**  
SCALE: 1" = 100'

PROJECT DESCRIPTION <b>HURON PARKWAY SEGMENTAL BLOCK WALLS REHABILITATION</b>	PROJECT NO. 2015024-MT3
PROJECT MANAGEMENT - PUBLIC SERVICES - CITY OF ANN ARBOR MAINTENANCE OF TRAFFIC	SHEET No. 5 OF 12
HURON PARKWAY MAINTENANCE OF TRAFFIC 03/17/16	CEW VDC DATE DRAWN CHECKED
CITY OF ANN ARBOR PUBLIC SERVICE 301 S. MAIN STREET ANN ARBOR, MI 48106-4847 www.annarbor.org	REV. DESCRIPTION DATE

- NOTES:**
- CONTRACTOR SHALL PROVIDE A MINIMUM OF 3-FOOT SEPARATION BETWEEN WORK ZONE AND TRAVEL LANES TO ALLOW FOR PLASTIC DRUMS.
  - MAINTAIN A MINIMUM OF 11-FOOT WIDE TRAVEL LANES.
  - THE NECESSARY SIGNS AND SIGN SUPPORT STANDARDS, BARRICADES, AND TRAFFIC CONTROL DEVICES NECESSARY FOR THE PROTECTION OF TRAFFIC SHALL BE IN ACCORDANCE WITH MICHIGAN MANUAL ON UNIFORM TRAFFIC CONTROL DEVICES. ALL SUCH DEVICES SHALL BE FURNISHED, INSTALLED, AND MAINTAINED BY THE CONTRACTOR.

- REFER TO CONTRACT DOCUMENTS FOR DETAILS ON MATERIALS, EQUIPMENT, AND CONSTRUCTION METHODS.
- CONTRACTOR TO FIELD STAKE ALL SIGNS AND CONTACT MICHAEL NEARING AT THE CITY AT (734) 794-6410 FOR REVIEW AND APPROVAL OF SIGN PLACEMENT PRIOR TO INSTALLATION.
- NO EQUIPMENT OR MATERIALS SHALL BE STORED OR WORK CONDUCTED IN THE BUFFER AREA.
- THE LIGHTED ARROW PANEL SHALL BE LOCATED AT THE BEGINNING OF THE MERGING TAPER OR AS CLOSE TO THE BEGINNING OF THE TAPER AS POSSIBLE WHEN PHYSICAL LIMITATIONS ARE PRESENT.



Z:\2015\150773\CAD\CD\150772-6 Dwg Created: 02-10-16

HURON PARKWAY

HURON PARKWAY

HURON PARKWAY

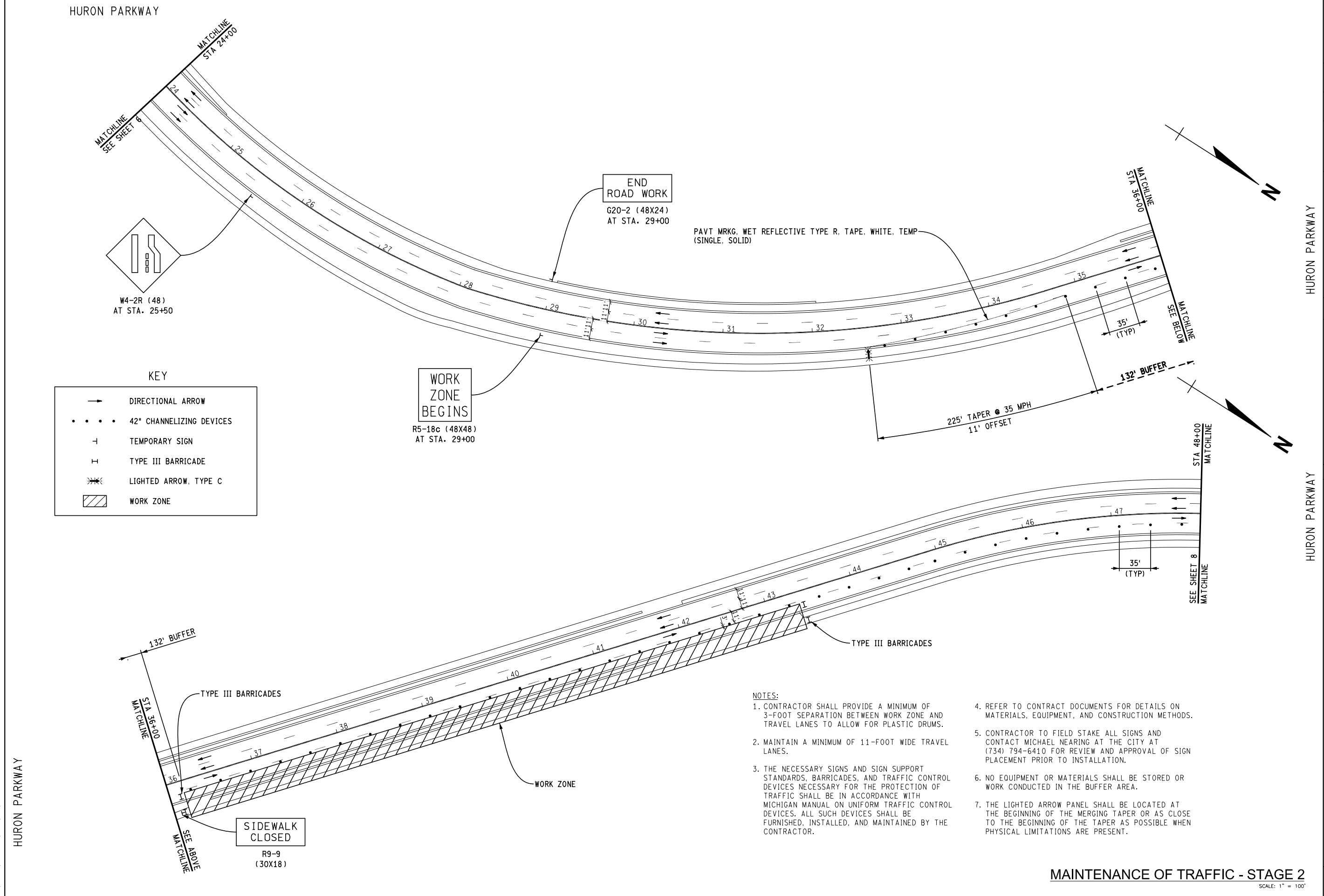
HURON PARKWAY

HURON PARKWAY MAINTENANCE OF TRAFFIC 03/17/16 CEW	DATE DRAWN CHECKED
CITY OF ANN ARBOR PUBLIC SERVICES 301 N. ZEEB STREET ANN ARBOR, MI 48106-4847 www.annarbor.org	DESCRIPTION
	REV.

PROJECT DESCRIPTION <b>HURON PARKWAY SEGMENTAL BLOCK WALLS REHABILITATION</b> MAINTENANCE OF TRAFFIC
DRAWING No. 2015024-MT4
SHEET No. 6 OF 12

**MAINTENANCE OF TRAFFIC - STAGE 2**  
SCALE: 1" = 100'

Z:\2015\150773\CAD\CD\150772-7 Dwg Created: 02-10-16



**KEY**

- DIRECTIONAL ARROW
- • • • 42" CHANNELIZING DEVICES
- ⊥ TEMPORARY SIGN
- ⊥ TYPE III BARRICADE
- ⚡ LIGHTED ARROW, TYPE C
- ▨ WORK ZONE

- NOTES:**
- CONTRACTOR SHALL PROVIDE A MINIMUM OF 3-FOOT SEPARATION BETWEEN WORK ZONE AND TRAVEL LANES TO ALLOW FOR PLASTIC DRUMS.
  - MAINTAIN A MINIMUM OF 11-FOOT WIDE TRAVEL LANES.
  - THE NECESSARY SIGNS AND SIGN SUPPORT STANDARDS, BARRICADES, AND TRAFFIC CONTROL DEVICES NECESSARY FOR THE PROTECTION OF TRAFFIC SHALL BE IN ACCORDANCE WITH MICHIGAN MANUAL ON UNIFORM TRAFFIC CONTROL DEVICES. ALL SUCH DEVICES SHALL BE FURNISHED, INSTALLED, AND MAINTAINED BY THE CONTRACTOR.
  - REFER TO CONTRACT DOCUMENTS FOR DETAILS ON MATERIALS, EQUIPMENT, AND CONSTRUCTION METHODS.
  - CONTRACTOR TO FIELD STAKE ALL SIGNS AND CONTACT MICHAEL NEARING AT THE CITY AT (734) 794-6410 FOR REVIEW AND APPROVAL OF SIGN PLACEMENT PRIOR TO INSTALLATION.
  - NO EQUIPMENT OR MATERIALS SHALL BE STORED OR WORK CONDUCTED IN THE BUFFER AREA.
  - THE LIGHTED ARROW PANEL SHALL BE LOCATED AT THE BEGINNING OF THE MERGING TAPER OR AS CLOSE TO THE BEGINNING OF THE TAPER AS POSSIBLE WHEN PHYSICAL LIMITATIONS ARE PRESENT.

**MAINTENANCE OF TRAFFIC - STAGE 2**  
SCALE: 1" = 100'

**PROJECT MANAGEMENT - PUBLIC SERVICES - CITY OF ANN ARBOR**

**HURON PARKWAY SEGMENTAL BLOCK WALLS REHABILITATION**

**MAINTENANCE OF TRAFFIC**

DRAWING No. 2015024-MT5

SHEET No. 7 OF 12

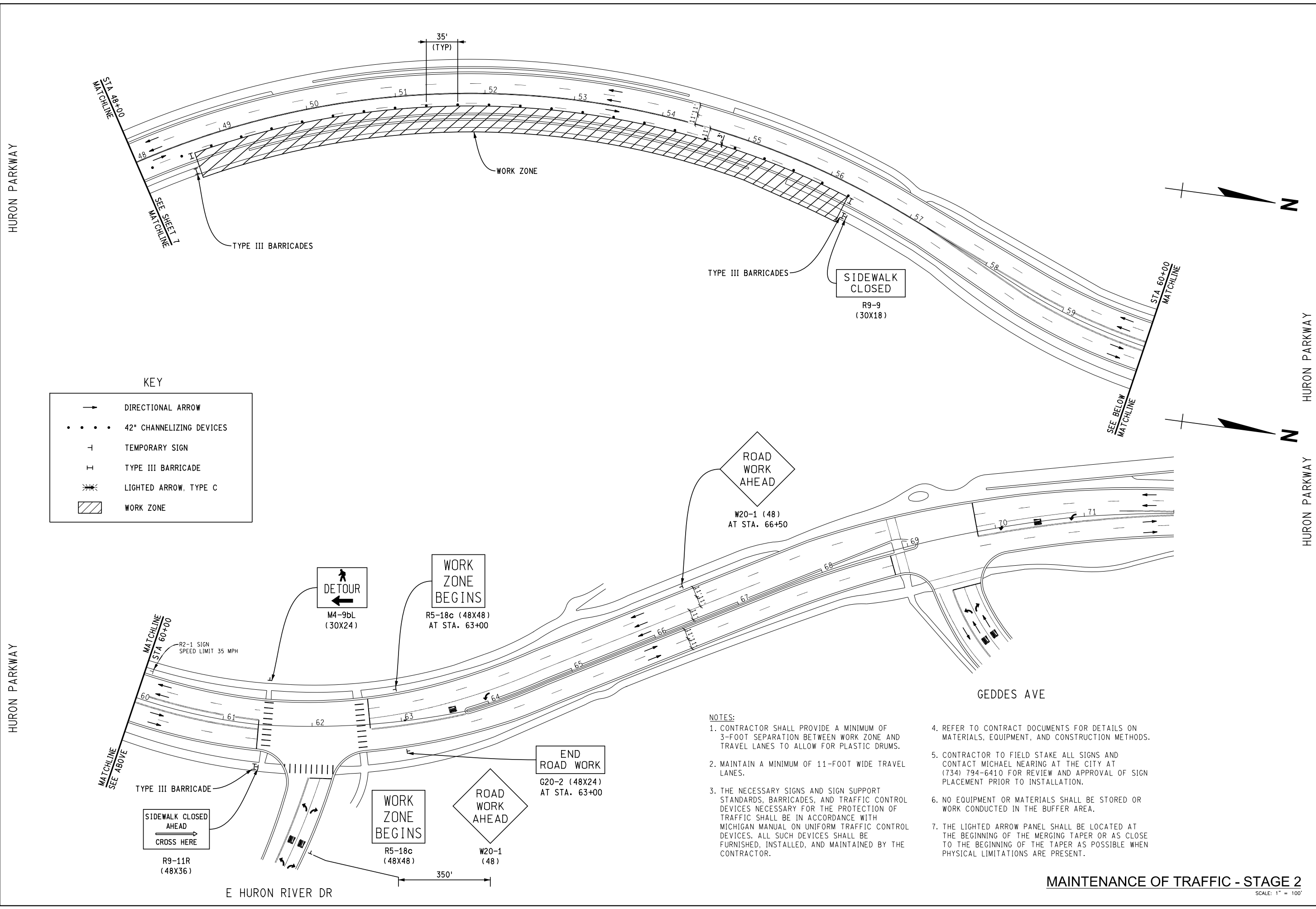
REV.	DESCRIPTION	DATE	DRAWN	CHECKED
1	HURON PARKWAY MAINTENANCE OF TRAFFIC	03/17/16	VOG	CEW

CITY OF ANN ARBOR  
PUBLIC SERVICES  
301 W. WOOD STREET  
ANN ARBOR, MI 48106-4847  
www.a2gov.org

811  
Know what's below.  
Call before you dig.



Z:\2015\150773\CAD\CD\150772-8 Dwg Created: 02-10-16



**KEY**

- DIRECTIONAL ARROW
- • • • 42" CHANNELIZING DEVICES
- ⊥ TEMPORARY SIGN
- ⊥ TYPE III BARRICADE
- ⚡ LIGHTED ARROW, TYPE C
- ▨ WORK ZONE

- NOTES:**
- CONTRACTOR SHALL PROVIDE A MINIMUM OF 3-FOOT SEPARATION BETWEEN WORK ZONE AND TRAVEL LANES TO ALLOW FOR PLASTIC DRUMS.
  - MAINTAIN A MINIMUM OF 11-FOOT WIDE TRAVEL LANES.
  - THE NECESSARY SIGNS AND SIGN SUPPORT STANDARDS, BARRICADES, AND TRAFFIC CONTROL DEVICES NECESSARY FOR THE PROTECTION OF TRAFFIC SHALL BE IN ACCORDANCE WITH MICHIGAN MANUAL ON UNIFORM TRAFFIC CONTROL DEVICES. ALL SUCH DEVICES SHALL BE FURNISHED, INSTALLED, AND MAINTAINED BY THE CONTRACTOR.
  - REFER TO CONTRACT DOCUMENTS FOR DETAILS ON MATERIALS, EQUIPMENT, AND CONSTRUCTION METHODS.
  - CONTRACTOR TO FIELD STAKE ALL SIGNS AND CONTACT MICHAEL NEARING AT THE CITY AT (734) 794-6410 FOR REVIEW AND APPROVAL OF SIGN PLACEMENT PRIOR TO INSTALLATION.
  - NO EQUIPMENT OR MATERIALS SHALL BE STORED OR WORK CONDUCTED IN THE BUFFER AREA.
  - THE LIGHTED ARROW PANEL SHALL BE LOCATED AT THE BEGINNING OF THE MERGING TAPER OR AS CLOSE TO THE BEGINNING OF THE TAPER AS POSSIBLE WHEN PHYSICAL LIMITATIONS ARE PRESENT.

**MAINTENANCE OF TRAFFIC - STAGE 2**  
SCALE: 1" = 100'

**PROJECT MANAGEMENT - PUBLIC SERVICES - CITY OF ANN ARBOR**

**PROJECT DESCRIPTION**  
HURON PARKWAY SEGMENTAL BLOCK WALLS REHABILITATION

**MAINTENANCE OF TRAFFIC**

DRAWING No. 2015024-MT6

**811**  
Know what's below. Call before you dig.

REV.	DATE	DRAWN	CHECKED
1	03/17/16	VOC	CEW

HURON PARKWAY MAINTENANCE OF TRAFFIC

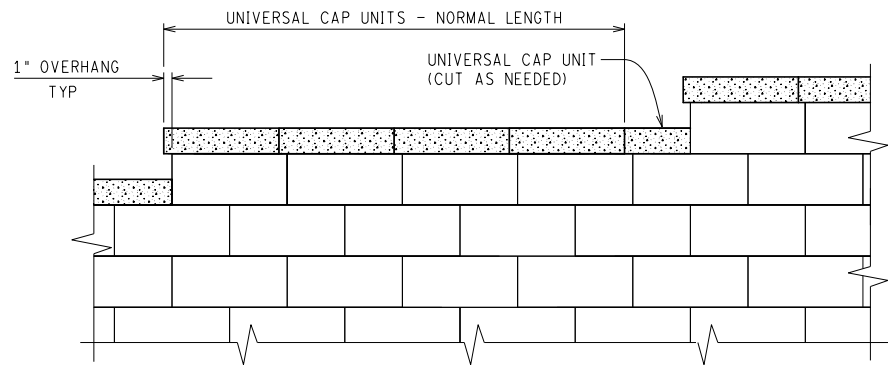
CITY OF ANN ARBOR  
100 EAST HURON STREET  
ANN ARBOR, MI 48106  
www.a2gov.org

**ANN ARBOR**  
CITY ENGINEER

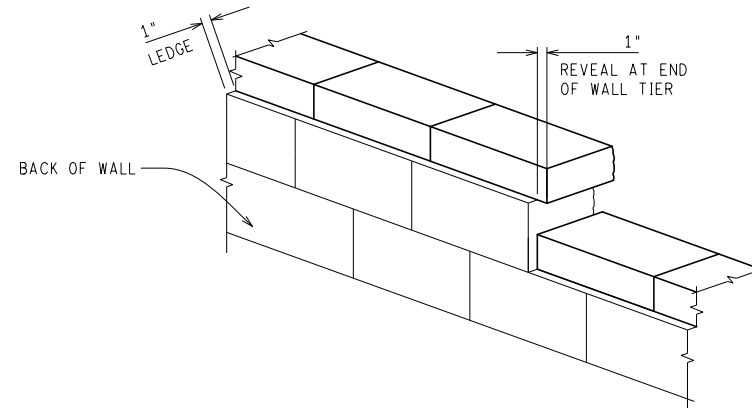
SHEET No. 8 OF 12



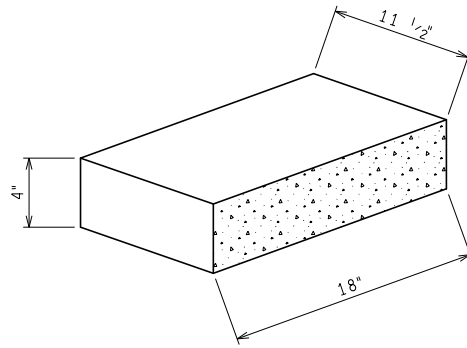
NOTE: THOROUGHLY CLEAN AND REMOVE ALL LOOSE MATERIAL, OLD ADHESIVE, AND ANY OTHER DELETERIOUS MATERIALS FROM TOP OF EXISTING SEGMENTAL BLOCKS PRIOR TO PLACING NEW CAP BLOCKS. ENGINEER TO APPROVE CONDITIONS PRIOR TO PLACING ADHESIVE.



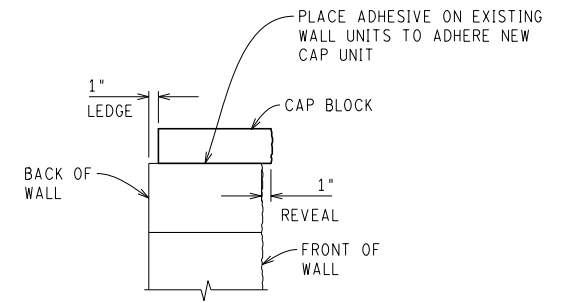
TYPICAL WALL TIER ELEVATION



ISO WALL SECTION



TYPICAL UNIVERSAL CAP UNIT

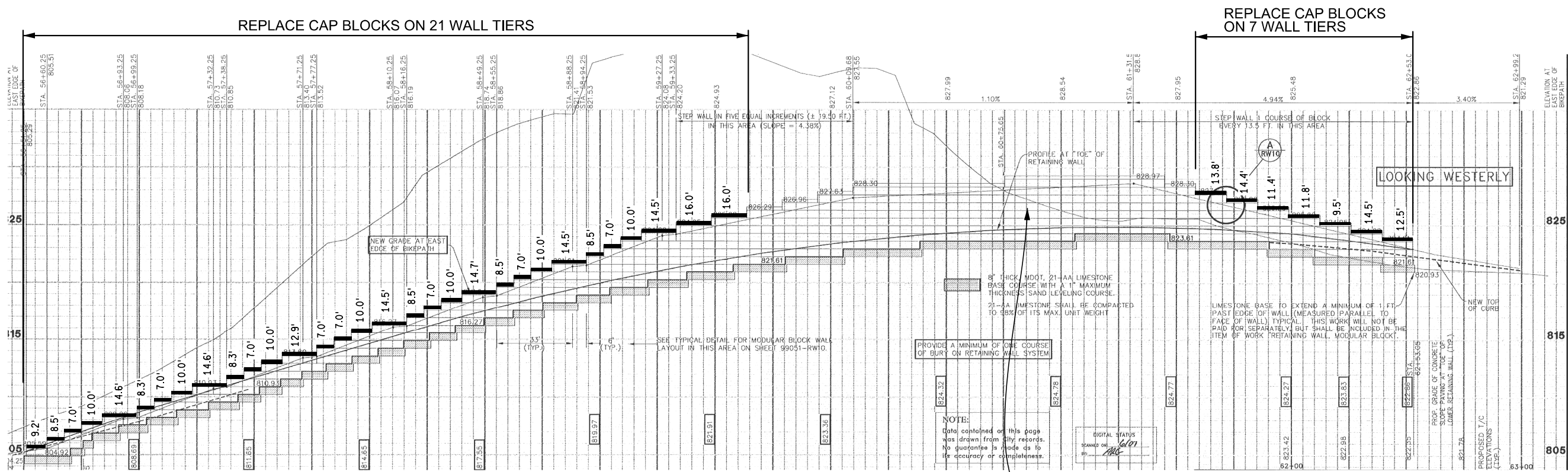


SECTION THRU WALL

WALL DETAILS  
NO SCALE



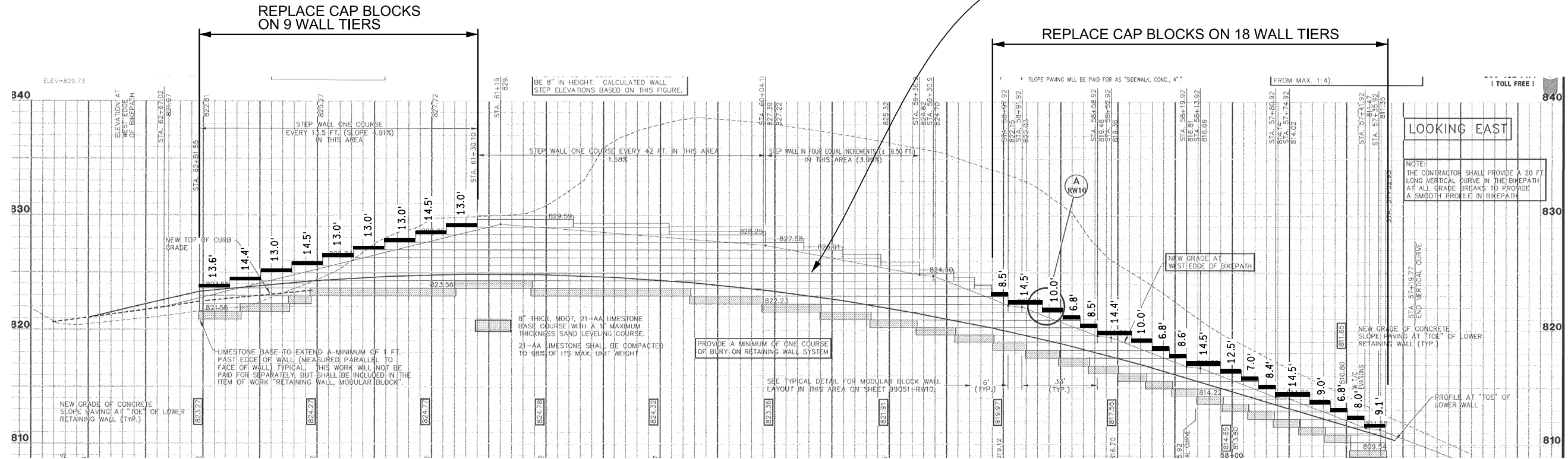
REV.	DESCRIPTION	DATE	DRAWN	CHECKED



**ELEVATION - AB WALL**

LOOKING WESTERLY

THE ENGINEER AND CONTRACTOR SHALL INSPECT AND AGREE UPON AREAS OF EFFLORESCENCE REMOVAL PRIOR TO COMMENCING WORK.



**ELEVATION - CD WALL**

LOOKING EAST

**WALL ELEVATIONS**

NO SCALE



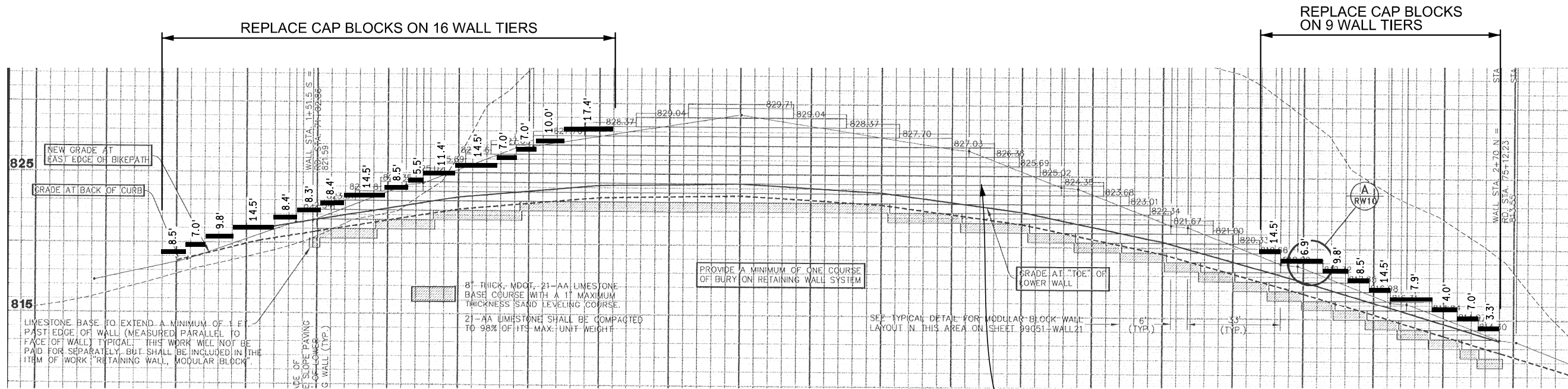
CITY OF ANN ARBOR  
PUBLIC SERVICE  
301 W. WOOD STREET  
ANN ARBOR, MI 48106-0487  
www.a2gov.org

REV.	DATE	DESCRIPTION
1		

VDC	DATE	CHECKED

CEW	DATE	CHECKED

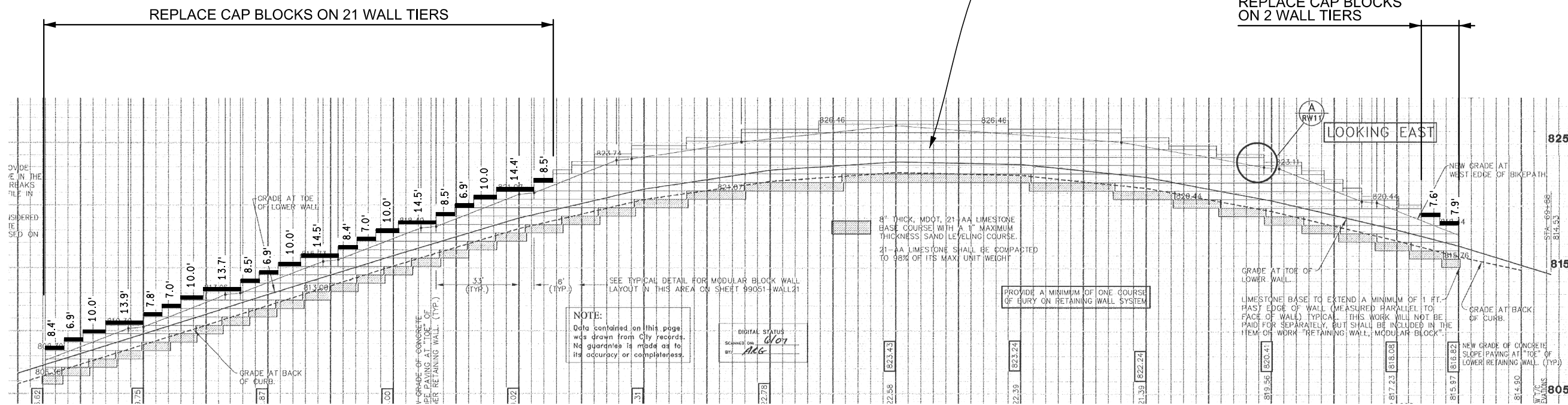




**ELEVATION - E WALL**

LOOKING WEST

THE ENGINEER AND CONTRACTOR SHALL INSPECT AND AGREE UPON AREAS OF EFFLORESCENCE REMOVAL PRIOR TO COMMENCING WORK.



**ELEVATION - F WALL**

LOOKING EAST

**WALL ELEVATIONS**  
NO SCALE

**PROJECT MANAGEMENT - PUBLIC SERVICES - CITY OF ANN ARBOR**

**HURON PARKWAY SEGMENTAL BLOCK WALLS REHABILITATION**

**WALL ELEVATIONS**

DRAWING No. 2015024-W3

SHEET No. 11 OF 12

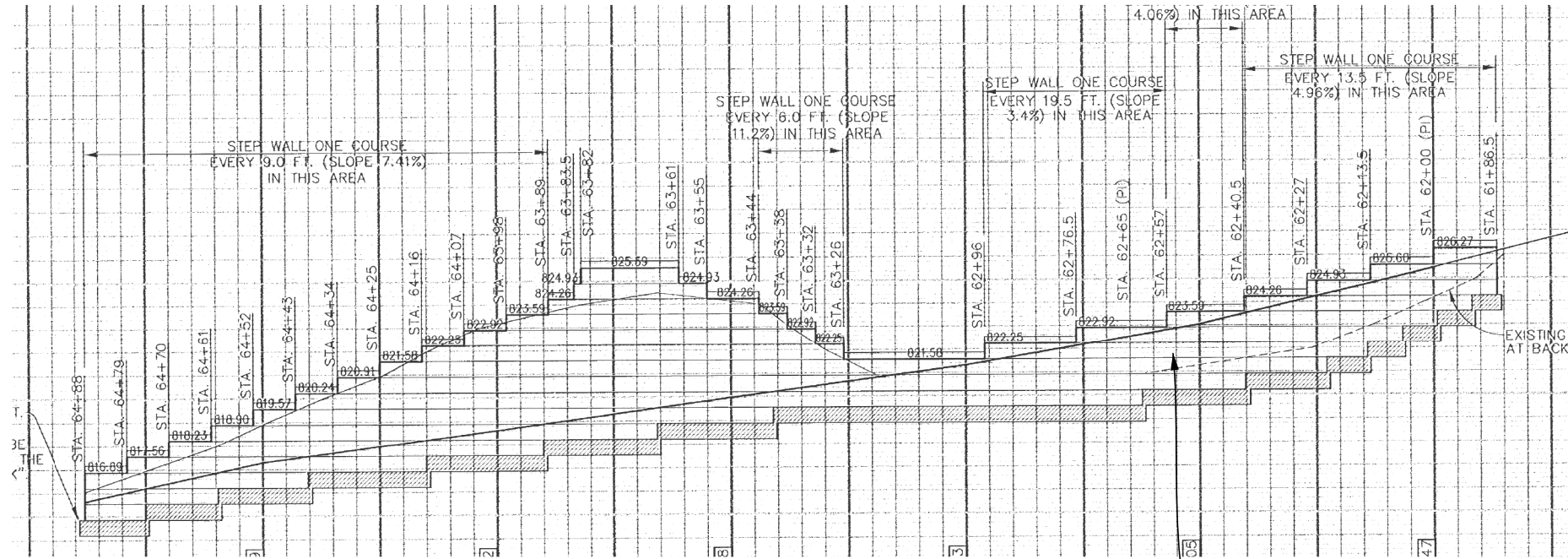
811  
Kiewit  
Call before you dig.

REV.	DESCRIPTION	DATE	DRAWN	CHECKED
1	HURON PARKWAY WALL ELEVATIONS	03/17/16	VOC	CEW

CITY OF ANN ARBOR  
PUBLIC SERVICES  
301 W. WOOD STREET  
ANN ARBOR, MI 48101-4647  
www.a2gov.org

ANN ARBOR  
MICHIGAN  
CITY

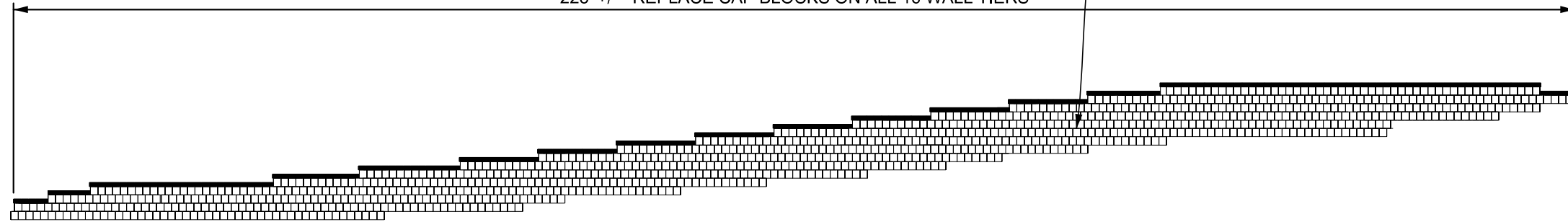
NO CAP BLOCK REPLACEMENTS - THIS WALL ONLY



**ELEVATION - NE WALL**  
LOOKING EASTERLY



THE ENGINEER AND CONTRACTOR SHALL INSPECT AND AGREE UPON AREAS OF EFFLORESCENCE REMOVAL PRIOR TO COMMENCING WORK.

225' +/- REPLACE CAP BLOCKS ON ALL 16 WALL TIERS



**ELEVATION - SW WALL**  
LOOKING WESTERLY

**WALL ELEVATIONS**  
NO SCALE

 <p>CITY OF ANN ARBOR PUBLIC SERVICES 301 W. WOOD STREET ANN ARBOR, MI 48101-4847 www.a2gov.org</p>		<p>1</p>	<p>HURON PARKWAY WALL ELEVATIONS</p>	<p>03/17/16</p>	<p>VOC</p>	<p>CEW</p>	 <p>811 Know what's below. Call before you dig.</p>	
<p><b>PROJECT MANAGEMENT - PUBLIC SERVICES - CITY OF ANN ARBOR</b></p>		<p>PROJECT DESCRIPTION</p> <p>HURON PARKWAY SEGMENTAL BLOCK WALLS REHABILITATION</p>		<p>DESCRIPTION</p>		<p>DATE</p>	<p>DRAWN</p>	<p>CHECKED</p>
<p>DRAWING No. 2015024-W4</p>		<p>REV.</p>		<p>DATE</p>		<p>DRAWN</p>	<p>CHECKED</p>	<p>12 OF 12</p>