





	EXISTING RO PIPE
	EXISTING STORM SEWER
	EXISTING SANITARY SEWER
	EXISTING SEW PIPE
	EXISTING WATER MAIN
	EXISTING PEW PIPE
	EXISTING GAS MAIN
	EXISTING ELECTRICAL UNDERGROUND
	EXISTING ELECTRICAL PRIMARY
	EXISTING ELECTRICAL SECONDARY
	EXISTING OVERHEAD LINE
	EXISTING FENCE
	EXISTING RAIN GARDEN
	EXISTING HWS/HWR
	EXISTING WAS
	EXISTING BUILDING
	EXISTING ASPHALT PAVEMENT
	EXISTING CONCRETE AREA
	EXISTING GRATING AREA
	EXISTING STORM MANHOLE
	EXISTING STORM CATCH BASINS
	EXISTING DRAIN CLEAN OUT
	EXISTING STORM OUTLET
	EXISTING SANITARY MANHOLE
	EXISTING WATER MAIN HYDRANT
	EXISTING WATER MAIN GATE VALVE & WELL
	EXISTING ELECTRICAL MANHOLE
	EXISTING ELECTRICAL LIGHT POLE
	EXISTING GAS VALVE
	EXISTING SFE HYDRANT
	TRAVERSE LINE & TRAVERSE POINT
	BENCH MARK SYMBOL
	PARKING BOLLARD

**BENCHMARK NO. 300:**  
ARROW ON HYDRANT  
SOUTH SIDE OF  
ENTRANCE RD. 80' +/  
NORTH EAST OF NORTH  
EAST CORNER OF  
RETENTION BLDG.  
ELEV. 741.96 +/-

**BENCHMARK NO. 301**  
FOUND BENCH TIE  
NAIL EAST SIDE  
OF GRIT BLDG. 28'  
+/- NORTH OF  
SOUTH EAST  
CORNER OF BLDG.  
ELEV. 749.24 +/-

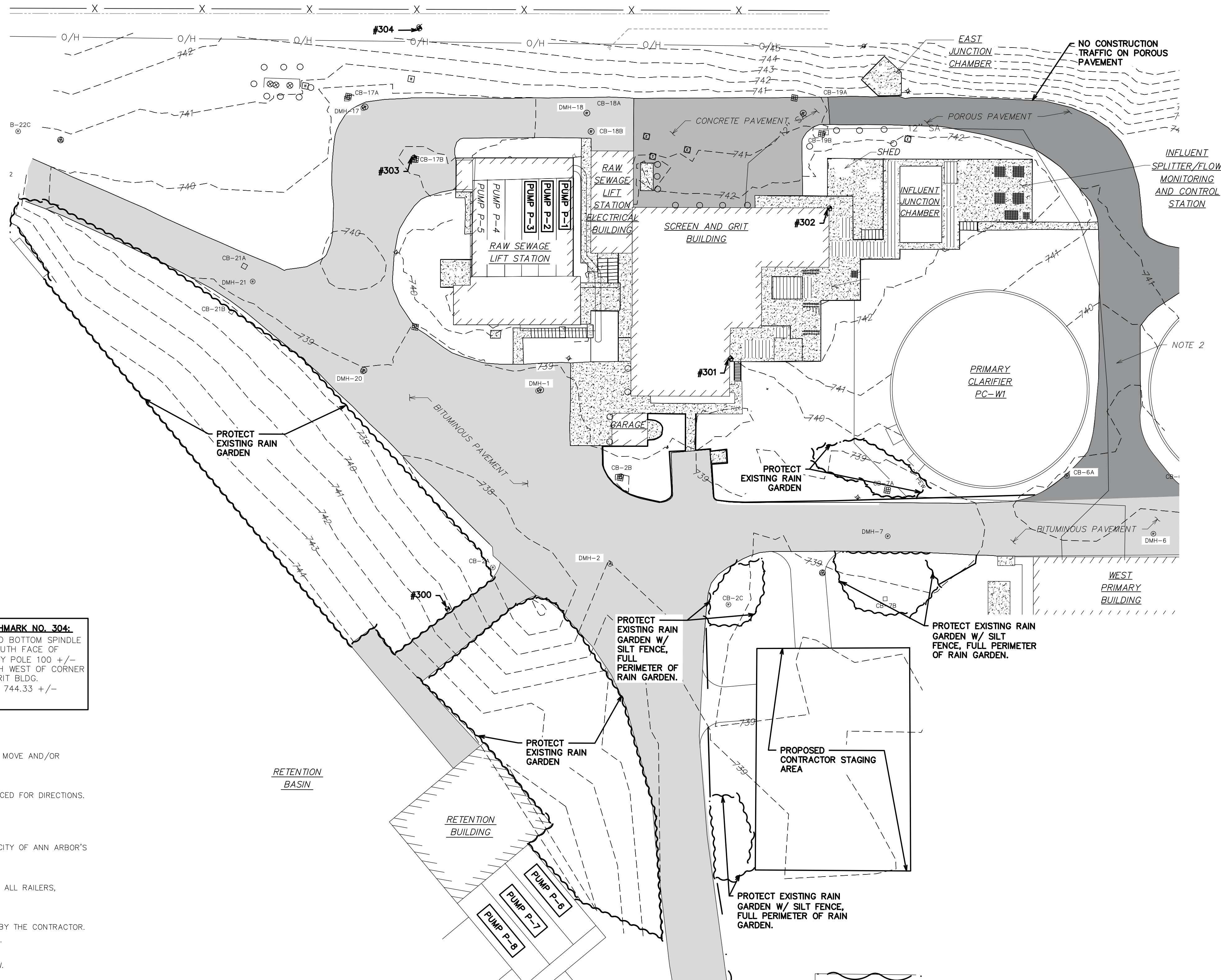
**BENCHMARK NO. 302:**  
FOUND BENCH TIE NAIL  
EAST SIDE OF GRIT BLDG  
AT NORTH EAST CORNER  
OF BLDG.  
ELEV. 749.22 +/-

**BENCHMARK NO. 303:**  
NORTH WEST CORNER OF  
CATCH BASIN RIM: 75'  
+/- NORTH WEST OF  
NORTH WEST CORNER OF  
GRIT BLDG.  
ELEV. 738.70 +/-

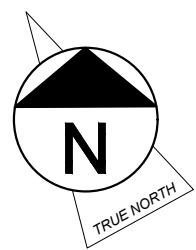
**BENCHMARK NO. 304:**  
FOUND BOTTOM SPIND  
IN SOUTH FACE OF  
UTILITY POLE 100 +/-  
NORTH WEST OF CORN  
OF GRIT BLDG.  
ELEV. 744.33 +/-

GENERAL CONSTRUCTION, ACCESS, AND STAGING NOTES:

- |       |   |
|-------|---|
| G-1.  | PLANT STAFF MUST HAVE ACCESS TO ALL FACILITIES AND THROUGHOUT CONSTRUCTION. THE CONTRACTOR SHALL PROMPTLY MOVE AND/OR RELOCATE ANY EQUIPMENT, MATERIALS, ETC. FROM ANY OPERATIONAL AREA OF THE PLANT.   |
| G-2.  | CONSTRUCTION PERSONNEL A DELIVERIES SHALL PROCEED DIRECTLY TO THE STAGING AREA. ADEQUATE SIGNS SHALL BE PLACED FOR DIRECTIONS.  |
| G-3.  | NO CONSTRUCTION TRAFFIC IS PERMITTED ON THE POROUS PAVEMENT DRIVE AS SHOWN ON THE SITE PLAN.  |
| G-4.  | THERE ARE SEVERAL RAIN GARDENS, WHICH IF IMPACTED BY THE CONTRACTOR'S OPERATIONS SHALL BE RESTORED TO THE CITY OF ANN ARBOR'S DESIGN STANDARDS FOR RAIN GARDENS. REPLACEMENT WITH SOD OR GENERAL LANDSCAPING IS NOT PERMITTED.  |
| G-5.  | THE CONTRACTOR'S STAGING AREA SHALL BE CONFINED TO THE AREA IDENTIFIED ON THE PLANS. THIS AREA SHALL INCLUDE ALL RAILERS, PARKING, MATERIAL STORAGE AND ALL CONSTRUCTION EQUIPMENT A VEHICLES.  |
| G-6.  | TEMPORARY UTILITIES SUCH AS POWER, WATER, SEWAGE, GAS, ETC. FOR ANY CONSTRUCTION TRAILERS SHALL BE PROVIDED BY THE CONTRACTOR. TEMPORARY USE OF POWER, WATER AND GAS INSIDE OF THE BUILDINGS SHALL BE COORDINATED WITH OWNER REQUIREMENTS.                                  |
| G-7.  | THE LOCATIONS OF UTILITIES ARE GENERALLY NOT SHOWN ON THE SITE PLAN. UTILITY DRAWINGS ARE AVAILABLE FOR REVIEW.   |
| G-8.  | UNSUITABLE & DEMOLITION MATERIALS AND EQUIPMENT SHALL NOT BE TEMPORARILY STORED ON SITE.  |
| G-9.  | SOIL EROSION CONTROL MEASURES ARE NOT LIKELY REQUIRED FOR THIS PROJECT. HOWEVER, IF CONTRACTOR STAGING FOR CONSTRUCTION DISRUPTS THE SOIL SUCH THAT SOIL EROSION IS EVIDENT, THEN PROPER SOIL EROSION CONTROL MEASURES WILL BE ENFORCED AT NO ADDITIONAL COST TO THE OWNER. |
| G-10. | ANY SOIL EROSION AND SEDIMENTATION CONTROL WORK SHALL CONFORM TO THE STANDARDS AND SPECIFICATIONS OF THE CITY OF ANN ARBOR.   |
| G-11. | ALL AREAS OF THE SITE AFFECTED BY CONSTRUCTION SHALL BE RESTORED TO THE ORIGINAL CONDITION AT NO ADDITIONAL COST TO THE OWNER.  |
| G-12. | PARKING SHALL BE KEPT TO A MINIMUM AND AVOID FIRE LANES. SUPERINTENDENT SHALL SIGN IN EACH DAY ON SITE AT THE ADMINISTRATION BUILDING.  |



SCALE: 1" = 30'

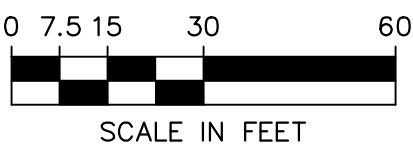


**3 FULL WORKING DAYS  
BEFORE YOU DIG  
CALL MISS DIG®  
1-800-482-7171**

Member utilities are required to locate  
their facilities at no charge to the caller.

**NOTICE:**

ALL EXISTING UTILITIES SHOWN ON THIS TOPOGRAPHIC SURVEY HAVE BEEN TAKEN FROM VISUAL OBSERVATION, AND RECORD MAPPING WHERE AVAILABLE. NO GUARANTEE IS MADE, OR SHOULD BE ASSUMED, AS TO THE COMPLETENESS OR ACCURACY OF THE UTILITIES SHOWN ON THIS DRAWING. PARTIES UTILIZING THIS INFORMATION SHALL FIELD VERIFY THE ACCURACY AND COMPLETENESS PRIOR TO CONSTRUCTION ACTIVITIES.



FOR TRUE SCALE PLOT THIS  
SHEET TO 34" X 22" PAPER SIZE



**Know what's below.  
Call before you dig.**

[illegible]

**CITY OF ANN ARBOR  
PUBLIC SERVICES  
301 EAST HURON STREET  
P.O. BOX 8647  
ANN ARBOR, MI 48107-8647  
734-794-6410  
[www.a2gov.org](http://www.a2gov.org)**



# CITY OF ANN ARBOR - WATER RESOURCE RECOVERY FACILITY

## EXISTING SITE PLAN

SCALE

DRAWING No.

SHEET No.

**C-1**



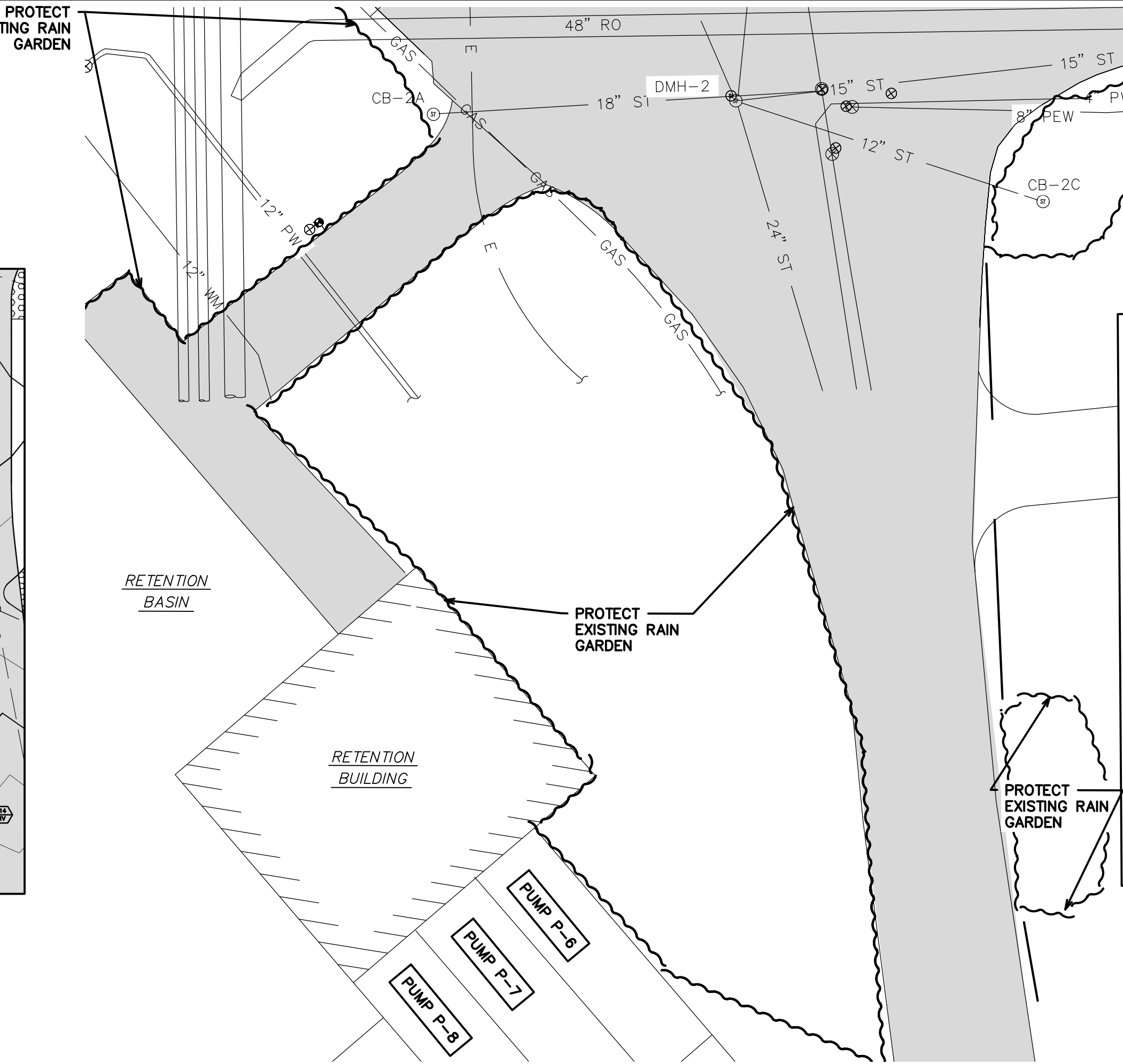
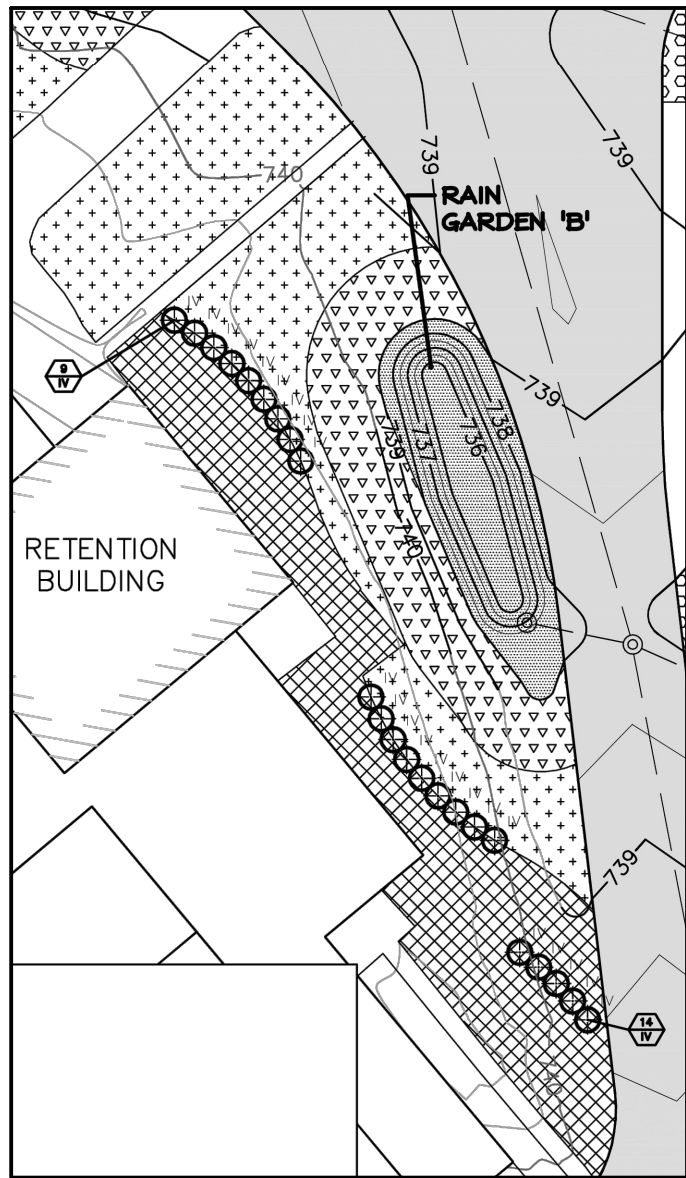
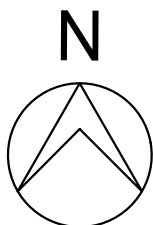
V:\202500\20250041\C\Sheets\c02\_Existing\_Site\_Plan.dwg — hrc\_qlw.ctb — Plot Date: 8/18/2025 4:19:52 PM

PLANT SCHEDULE									
KEY	QTY.	SPECIES	MIN. SIZE	SPEC.	KEY	QTY.	SPECIES	MIN. SIZE	SPEC.
PV	80	ELM VERBENA	24" X 36" HT.	80	PV	10	ELM VERBENA	24" X 36" HT.	80
RV	10	RED VIBURNUM	24" X 36" HT.	10	RV	10	RED VIBURNUM	24" X 36" HT.	10
LV	10	LEAFY LILY	24" X 36" HT.	10	LV	10	LEAFY LILY	24" X 36" HT.	10
LM	10	LEAFY LILY	24" X 36" HT.	10	LM	10	LEAFY LILY	24" X 36" HT.	10
LS	10	LEAFY LILY	24" X 36" HT.	10	LS	10	LEAFY LILY	24" X 36" HT.	10
PV	10	ELM VERBENA	24" X 36" HT.	10	PV	10	ELM VERBENA	24" X 36" HT.	10
PLANTING ZONE C - RAIN GARDEN C - 10' X 10' PLANTING RAIN GARDEN C - 10' X 10' PLANTING									
RV	10	RED VIBURNUM	24" X 36" HT.	10	RV	10	RED VIBURNUM	24" X 36" HT.	10
LV	10	LEAFY LILY	24" X 36" HT.	10	LV	10	LEAFY LILY	24" X 36" HT.	10
LM	10	LEAFY LILY	24" X 36" HT.	10	LM	10	LEAFY LILY	24" X 36" HT.	10
LS	10	LEAFY LILY	24" X 36" HT.	10	LS	10	LEAFY LILY	24" X 36" HT.	10
PV	10	ELM VERBENA	24" X 36" HT.	10	PV	10	ELM VERBENA	24" X 36" HT.	10
PLANTING ZONE D - RAIN GARDEN D - 10' X 10' PLANTING RAIN GARDEN D - 10' X 10' PLANTING									
RV	10	RED VIBURNUM	24" X 36" HT.	10	RV	10	RED VIBURNUM	24" X 36" HT.	10
LV	10	LEAFY LILY	24" X 36" HT.	10	LV	10	LEAFY LILY	24" X 36" HT.	10
LM	10	LEAFY LILY	24" X 36" HT.	10	LM	10	LEAFY LILY	24" X 36" HT.	10
LS	10	LEAFY LILY	24" X 36" HT.	10	LS	10	LEAFY LILY	24" X 36" HT.	10
PV	10	ELM VERBENA	24" X 36" HT.	10	PV	10	ELM VERBENA	24" X 36" HT.	10
PLANTING ZONE E - RAIN GARDEN E - 10' X 10' PLANTING RAIN GARDEN E - 10' X 10' PLANTING									
RV	10	RED VIBURNUM	24" X 36" HT.	10	RV	10	RED VIBURNUM	24" X 36" HT.	10
LV	10	LEAFY LILY	24" X 36" HT.	10	LV	10	LEAFY LILY	24" X 36" HT.	10
LM	10	LEAFY LILY	24" X 36" HT.	10	LM	10	LEAFY LILY	24" X 36" HT.	10
LS	10	LEAFY LILY	24" X 36" HT.	10	LS	10	LEAFY LILY	24" X 36" HT.	10
PV	10	ELM VERBENA	24" X 36" HT.	10	PV	10	ELM VERBENA	24" X 36" HT.	10

LEGEND	
	PAVEMENT
	RAIN GARDENS
	PLANTING ZONE C: 0'-2' ABOVE WATER LEVEL
	PLANTING ZONE D: 2'-4' ABOVE WATER LEVEL
	PLANTING ZONE E: 4'-10' ABOVE WATER LEVEL
	PLANTING ZONE F: 10' ABOVE WATER LEVEL
	GRASS SWALES
	BIG BLUESTEM
	LITTLE BLUESTEM
	TRANSITION AREA: SWITCH GRASS

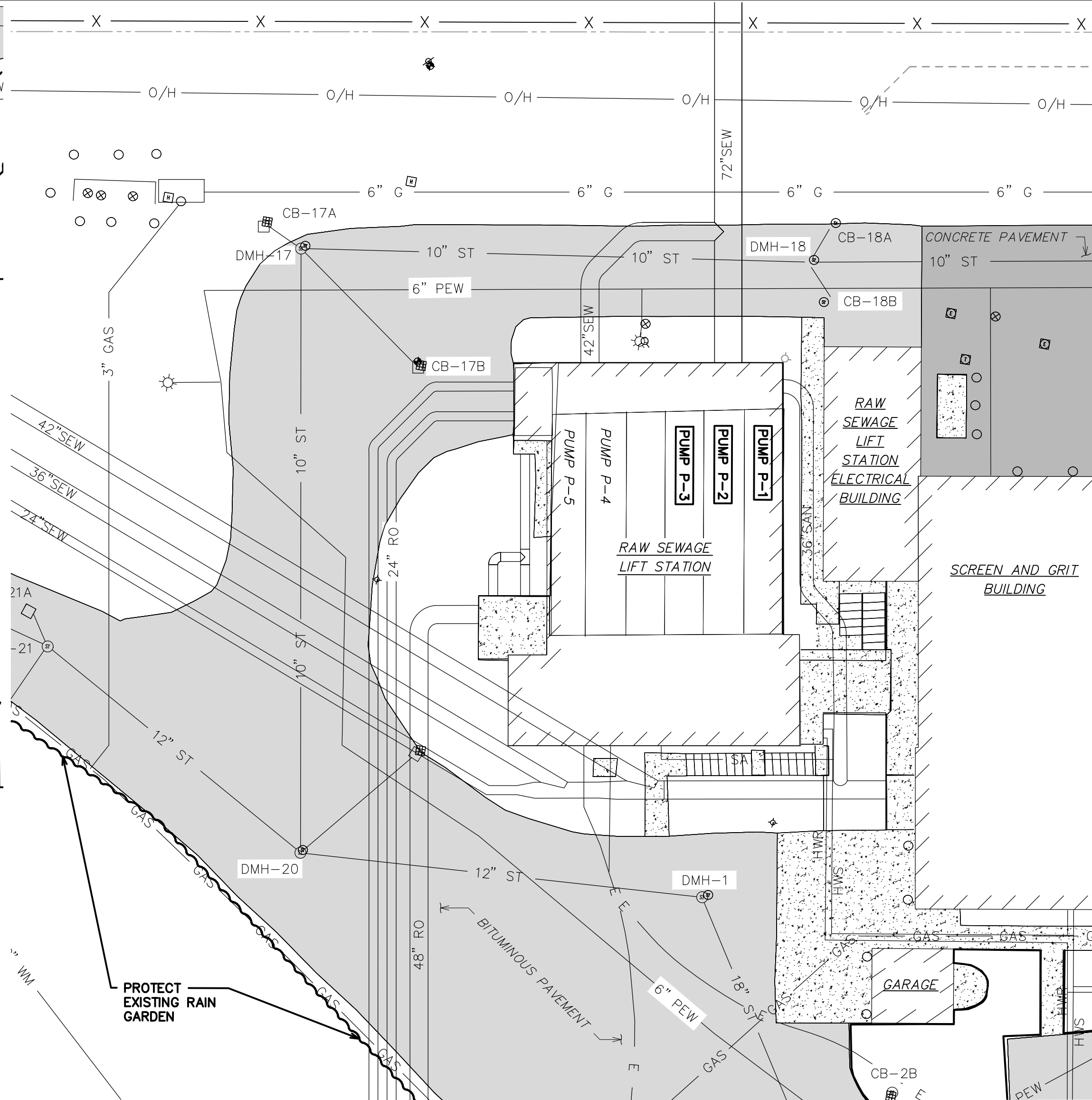
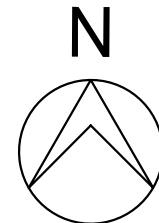
RAIN GARDEN B DETAILED PLAN

SCALE: N.T.S.



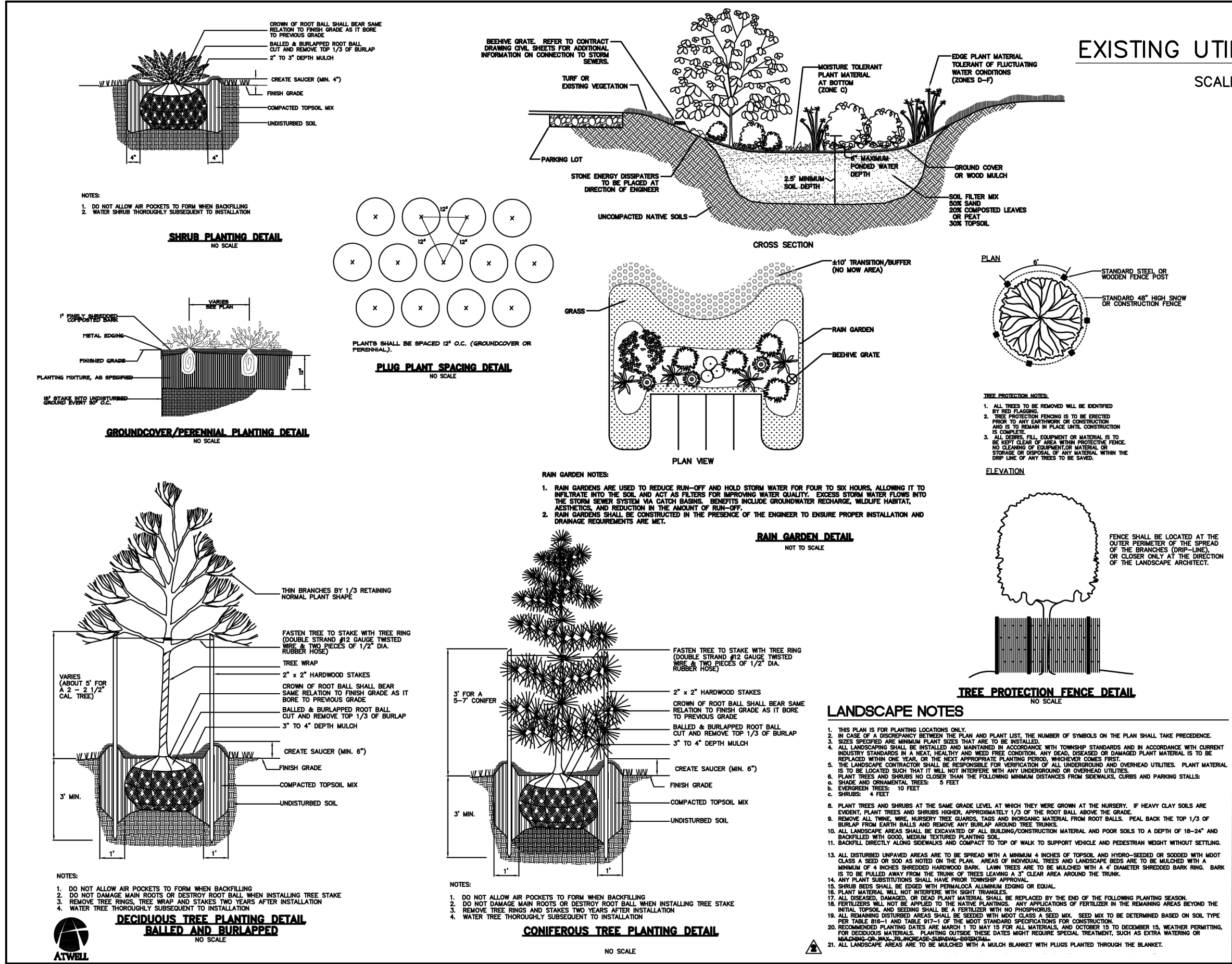
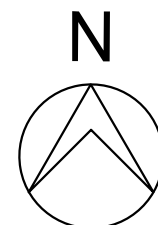
EXISTING UTILITIES SITE PLAN

SCALE: 1" = 20'



EXISTING UTILITIES SITE PLAN

SCALE: 1" = 20'



LANDSCAPE NOTES AND DETAILS

SCALE: N.T.S.

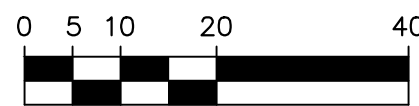
**NOTE:**  
THE RAIN GARDEN B PLAN, LEGEND, AND PLANT SCHEDULE ARE FROM THE 2011 PLANT FACILITIES RENOVATIONS PROJECT. THIS INFORMATION IS INCLUDED IN THE EVENT THE CONTRACTOR DAMAGES THE RAIN GARDEN DURING CONSTRUCTION AT THE RETENTION BUILDING AND THE RAIN GARDEN REQUIRES RESTORATION. THE RAIN GARDEN SHALL BE RESTORED TO THESE EXACT EXISTING SITE CONDITIONS (2011 PLANT FACILITY RENOVATIONS CONDITIONS), INCLUDING SITE GRADING ELEVATION CORRECTIONS, PLANT SPECIES REPLACEMENTS, AND PLANT QUANTITY REPLACEMENTS, AT NO ADDITIONAL EXPENSE TO THE OWNER.



3 FULL WORKING DAYS  
**BEFORE YOU DIG**  
CALL MISS DIG®  
1-800-482-7171

Member utilities are required to locate their facilities at no charge to the caller.

**NOTICE:**  
ALL EXISTING UTILITIES SHOWN ON THIS TOPOGRAPHIC SURVEY HAVE BEEN TAKEN FROM VISUAL OBSERVATION, AND RECORD MAPPING WHERE AVAILABLE. NO GUARANTEE IS MADE, OR SHOULD BE ASSUMED, AS TO THE COMPLETENESS OR ACCURACY OF THE UTILITIES SHOWN ON THIS DRAWING. PARTIES UTILIZING THIS INFORMATION SHALL FIELD VERIFY THE ACCURACY AND COMPLETENESS PRIOR TO CONSTRUCTION ACTIVITIES.



SCALE IN FEET  
FOR TRUE SCALE PLOT THIS SHEET TO 34" X 22" PAPER SIZE



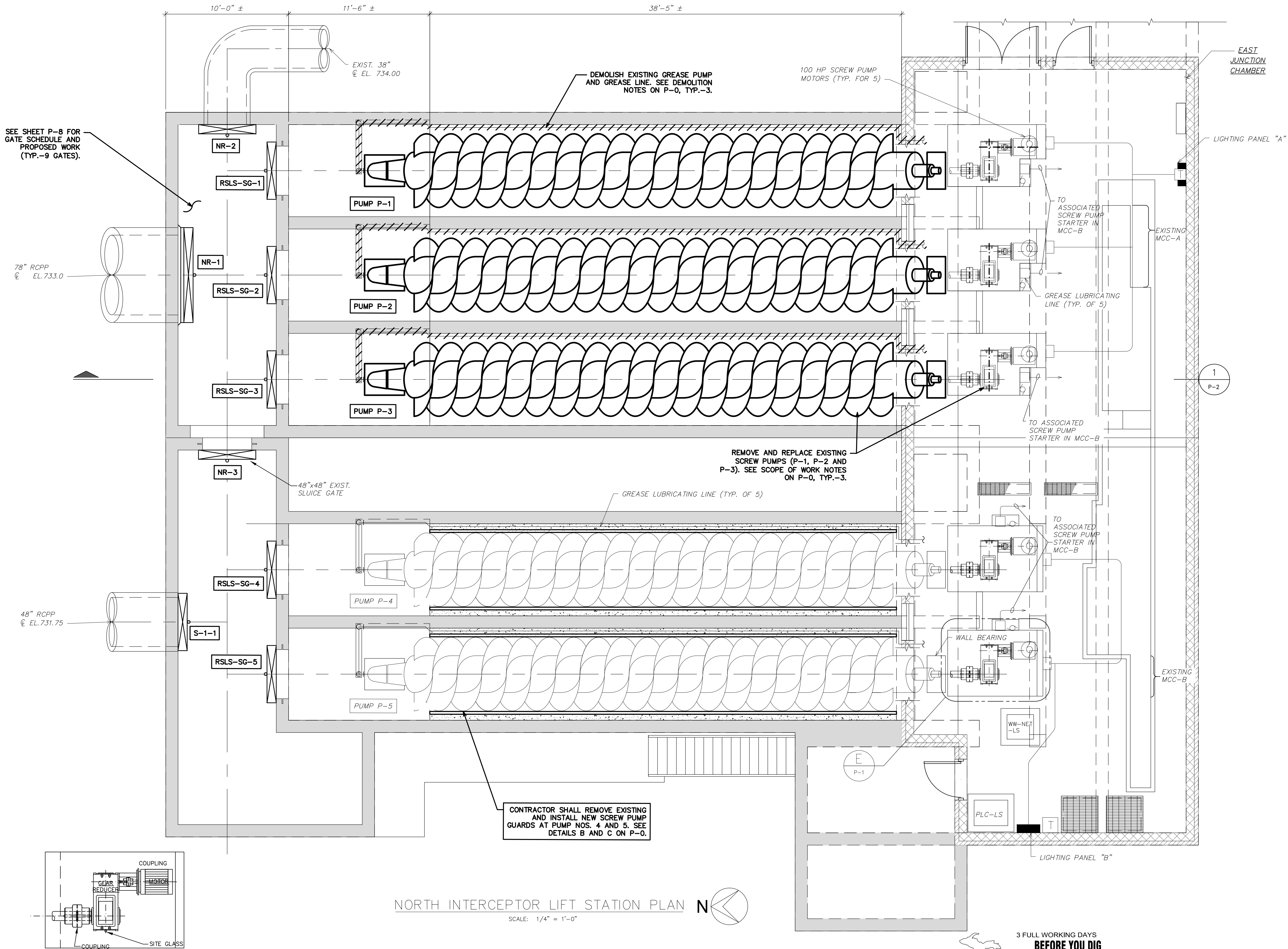
REV.	DATE	DESCRIPTION
01	8/19/25	ISSUED FOR BIDS
00	7/25/25	90% OWNER REVIEW
		CHECKED
		S.D.
		S.P.P.





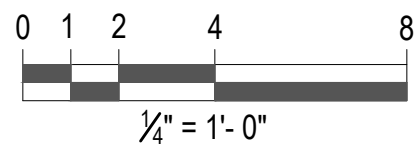
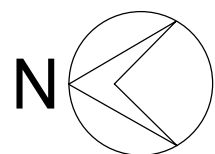


V:\202500\20250041\p\Sheets\p1\_Existing\_Raw\_Sewage\_Lift\_Station\_Plan.dwg - hrc\_plw.ctb - Plot Date: 8/18/2025 3:40:56 PM



NORTH INTERCEPTOR LIFT STATION PLAN

SCALE: 1/4" = 1'-0"



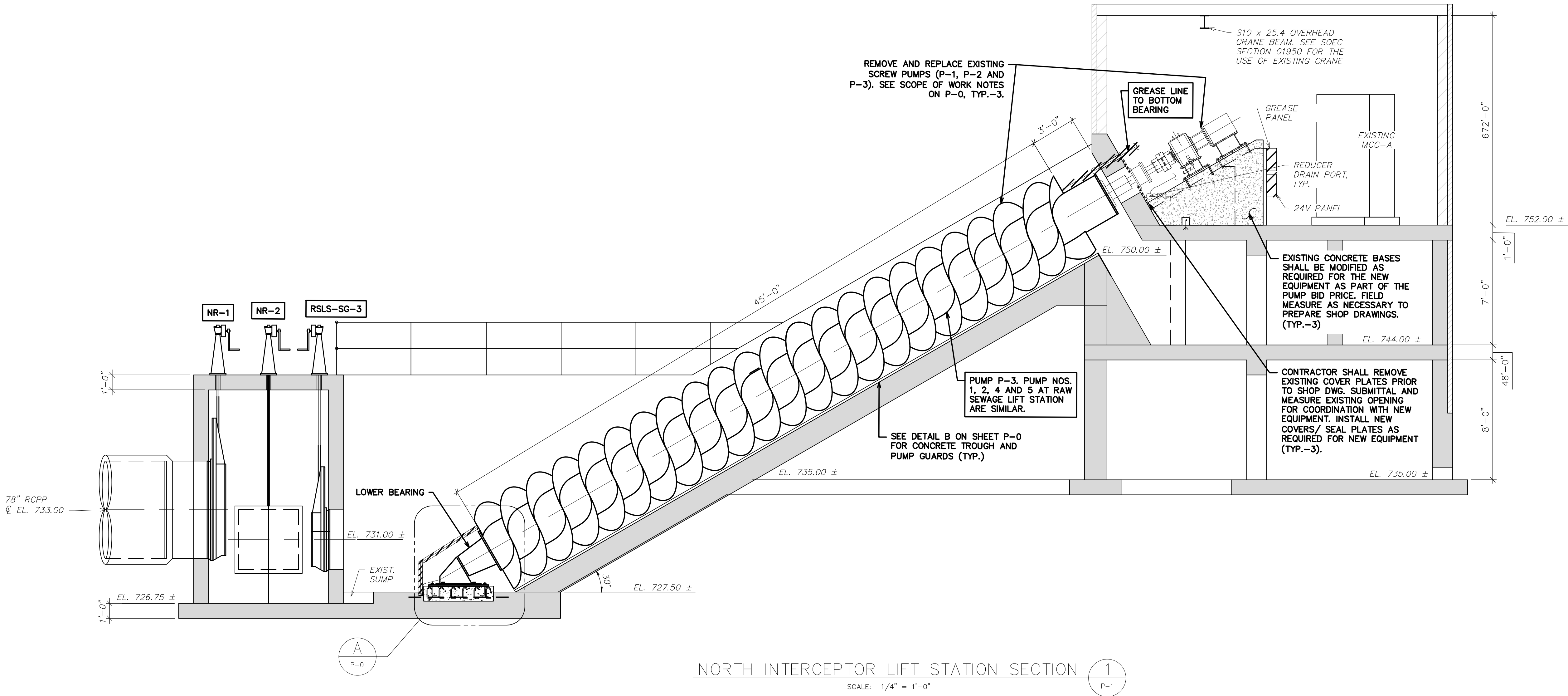
FOR TRUE SCALE PLOT THIS SHEET TO 34" X 22" PAPER SIZE



REV.	DESCRIPTION	DATE	DRAWN	CHECKED
01	ISSUED FOR BIDS	8/19/25	S.R.P.	S.L.D.
00	90% OWNER REVIEW	7/25/25	S.R.P.	S.L.D.



V:\202500\20250041\p\Sheets\p2\_Existing\_Raw\_Sewage\_Lift\_Station\_Pump\_Section\_and\_Details.dwg — hrc\_olwctb — Plot Date: 8/18/2025 3:42:51 PM



NORTH INTERCEPTOR LIFT STATION SECTION 1  
SCALE: 1/4" = 1'-0"



SCREW PUMP COVERS



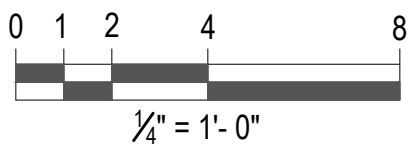
ODOR CONTROL PIPING

SALVAGE AND/OR REMOVE AND REPLACE INFILL AT CAVITIES, TYP. PERIMETER OF SCREW PUMP COVERS. SEE NOTE SC-4 ON DWG. P-0.

SEE SCOPE OF WORK ON SHEET P-0 FOR DRIVES AND MOTORS.



SCREW PUMP MOTOR

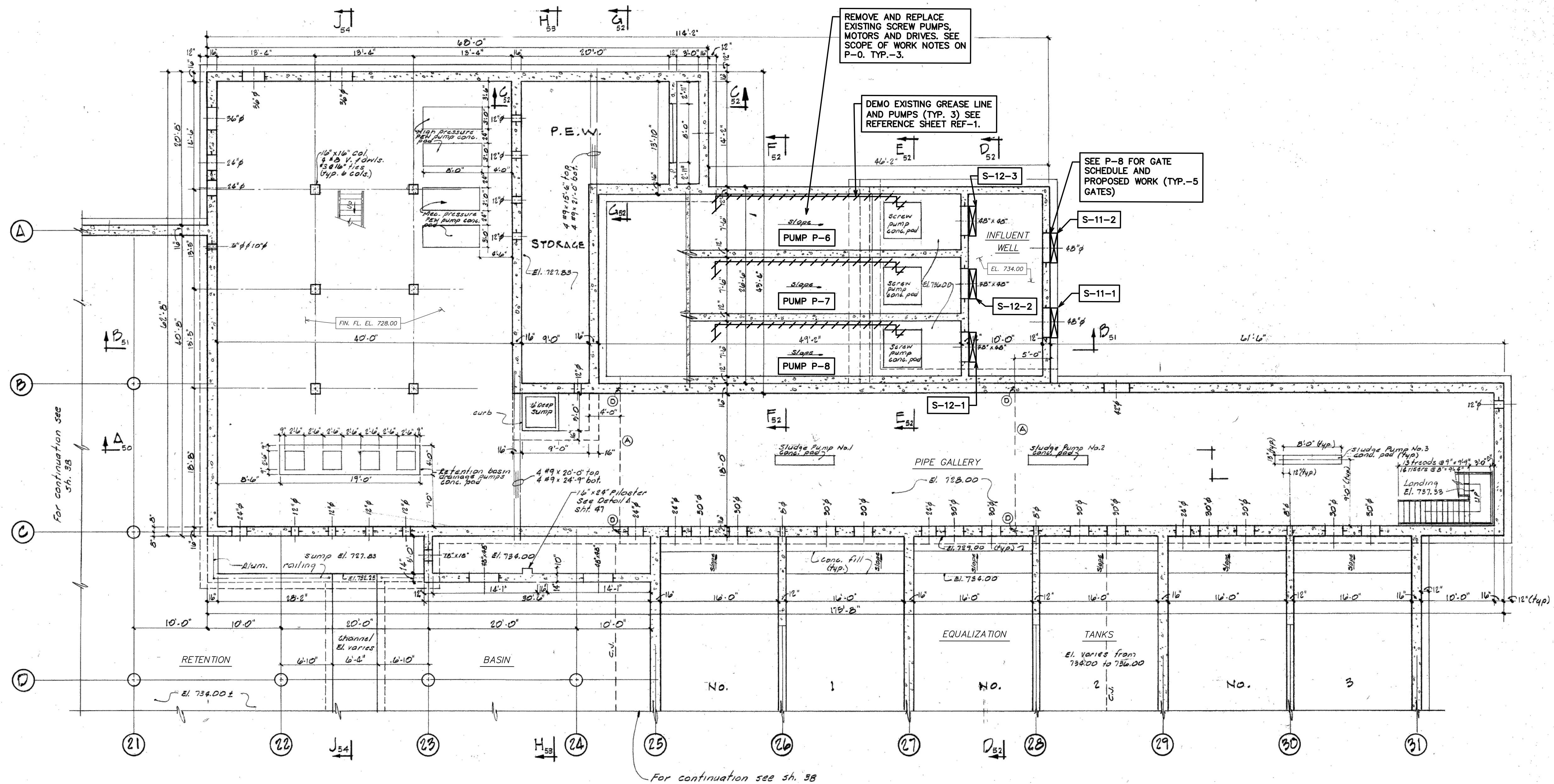


FOR TRUE SCALE PLOT THIS SHEET TO 34" X 22" PAPER SIZE



REV.	DESCRIPTION	DATE	DRAWN	CHECKED
01	ISSUED FOR BIDS	8/19/25	S.R.P.	S.L.D.
00	90% OWNER REVIEW	7/25/25	S.R.P.	S.L.D.



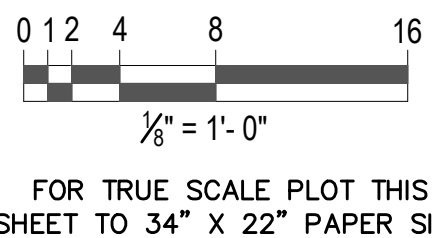


BASEMENT FLOOR PLAN EL. 728.00

---

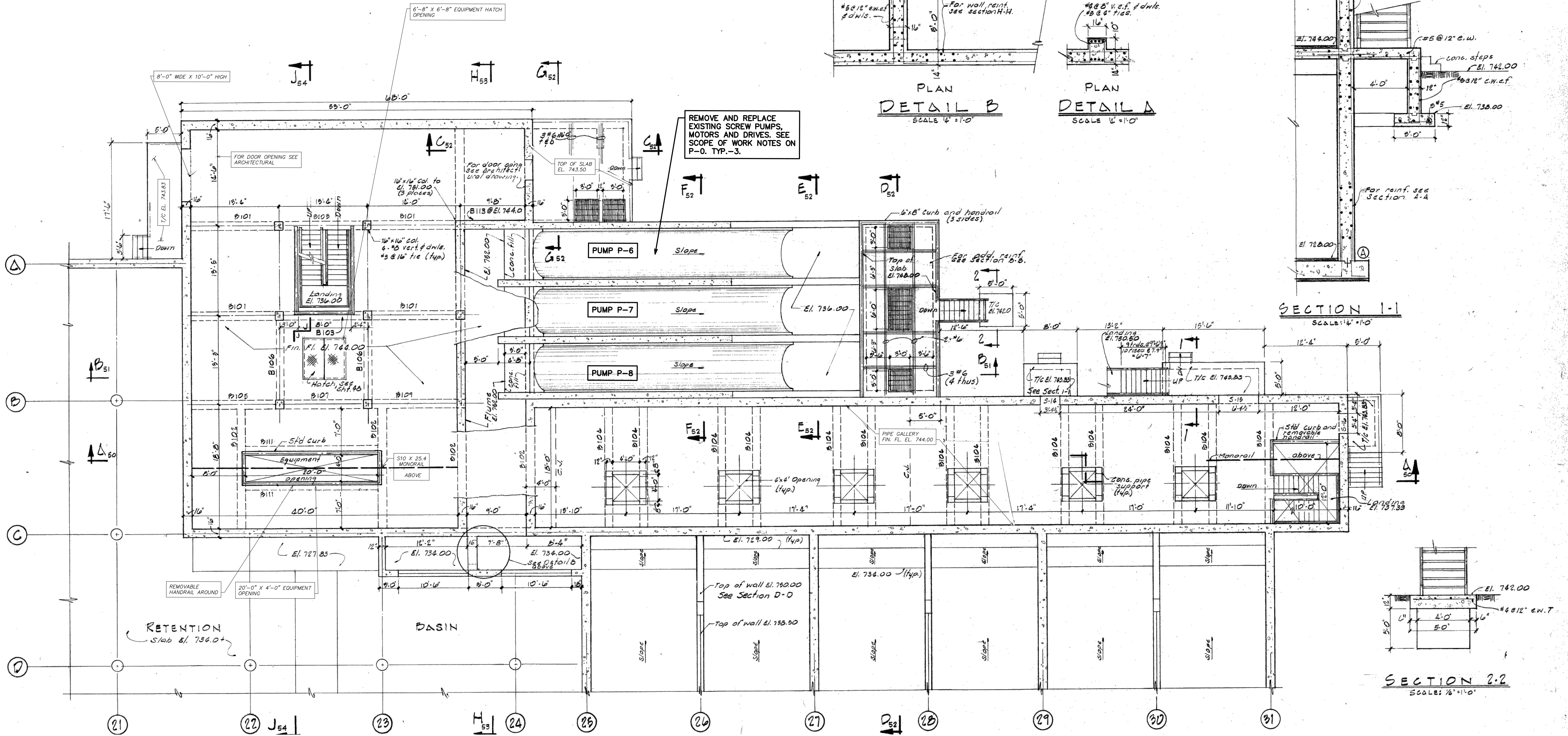
SCALE: 1/8" = 1'-0"

**NOTICE:**  
THIS DRAWING HAS BEEN COPIED FROM A PREVIOUS CONSTRUCTION PROJECT. NO GUARANTEE IS MADE, OR SHOULD BE ASSUMED AS TO THE COMPLETENESS OR ACCURACY OF THE INFORMATION SHOWN ON THIS DRAWING. PARTIES UTILIZING THIS INFORMATION SHALL FIELD VERIFY THE ACCURACY AND COMPLETENESS PRIOR TO CONSTRUCTION/DEMOLITION ACTIVITIES. WORK ITEMS ON THIS DRAWING ARE SHOWN THUS "□". THIS DRAWING IS NOT TO SCALE.

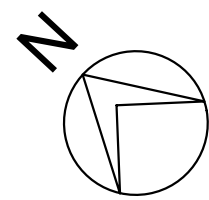




V:\202500\20250041\p\Sheets\p4\_Retention\_Basin\_Intermediate\_Plan.dwg — hrc\_olw.ctb — Plot Date: 8/18/2025 3:54:07 PM

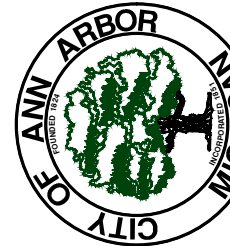
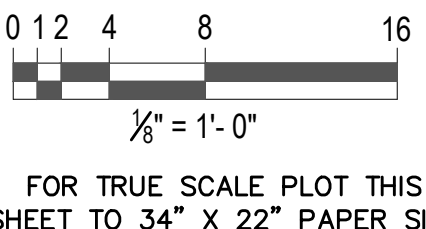


INTERMEDIATE FLOOR PLAN ELEV. 744.00  
SCALE: 1/8" = 1'-0"



FROM SHT 47 OF 63  
77-S-6  
CONTRACT  
APRIL 1977

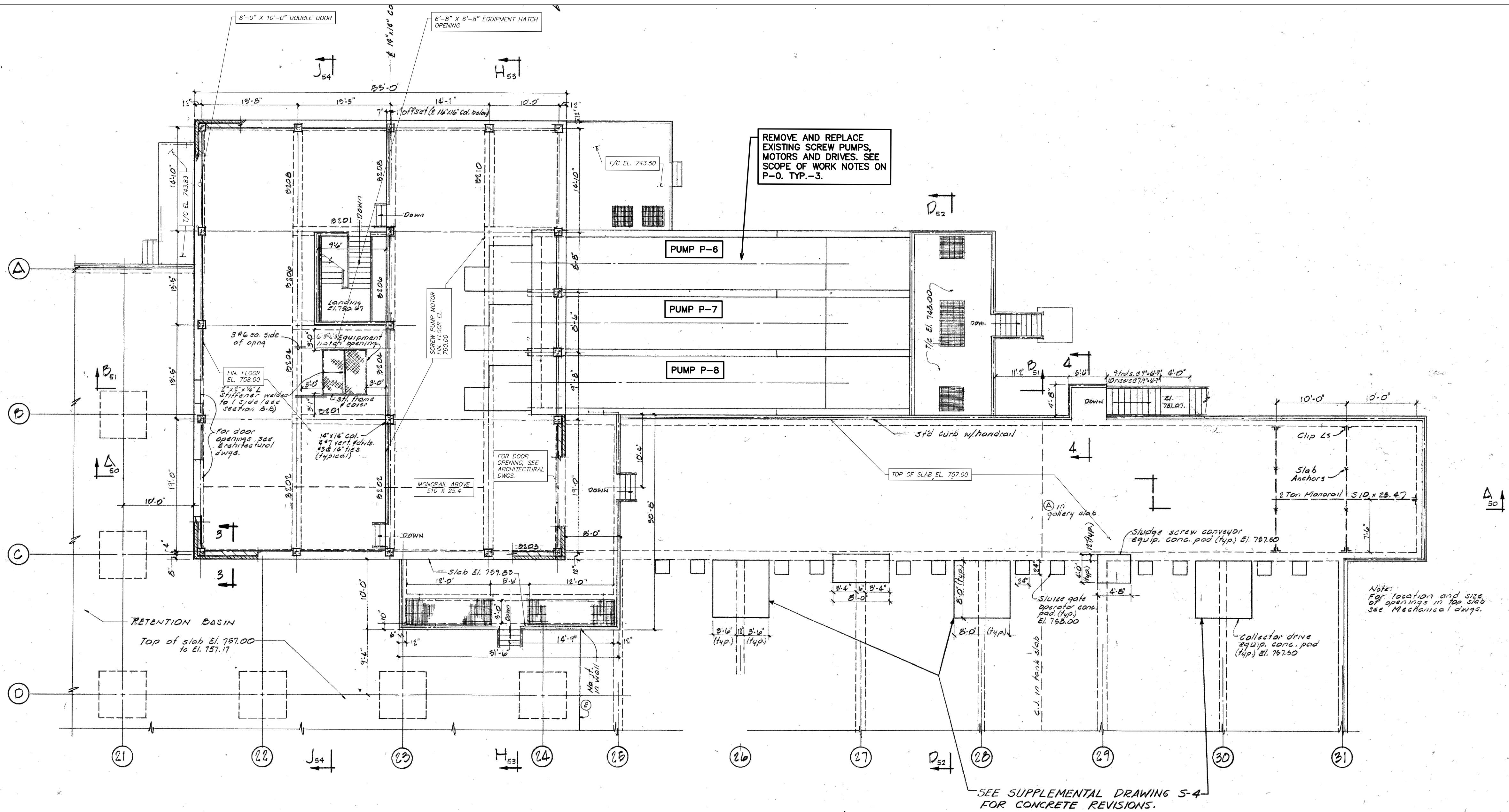
**NOTICE:**  
THIS DRAWING HAS BEEN COPIED FROM A PREVIOUS CONSTRUCTION PROJECT. NO GUARANTEE IS MADE, OR SHOULD BE ASSUMED AS TO THE COMPLETENESS OR ACCURACY OF THE INFORMATION SHOWN ON THIS DRAWING. PARTIES UTILIZING THIS INFORMATION SHALL FIELD VERIFY THE ACCURACY AND COMPLETENESS PRIOR TO CONSTRUCTION/DEMOLITION ACTIVITIES. WORK ITEMS ON THIS DRAWING ARE SHOWN THUS "□". THIS DRAWING IS NOT TO SCALE.



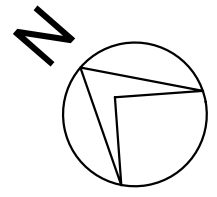
REV.	DESCRIPTION	DATE	DRAWN	CHECKED
01	ISSUED FOR BIDS	8/19/25	S.R.P.	S.L.D.
00	90% OWNER REVIEW	7/25/25	S.R.P.	S.L.D.



V:\202500\20250041\p\Sheets\p5\_Retention\_Basin\_Top\_Plan.dwg — hrc\_plw.ctb — Plot Date: 8/18/2025 3:56:38 PM



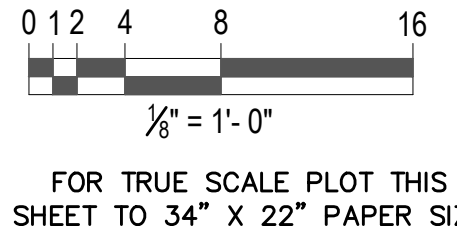
TOP PLAN EL. 760.00  
SCALE: 1/8" = 1'-0"



SEE SUPPLEMENTAL DRAWING S-4  
FOR CONCRETE REVISIONS.

**NOTICE:**  
THIS DRAWING HAS BEEN COPIED FROM A PREVIOUS CONSTRUCTION PROJECT. NO GUARANTEE IS MADE, OR SHOULD BE ASSUMED AS TO THE COMPLETENESS OR ACCURACY OF THE INFORMATION SHOWN ON THIS DRAWING. PARTIES UTILIZING THIS INFORMATION SHALL FIELD VERIFY THE ACCURACY AND COMPLETENESS PRIOR TO CONSTRUCTION/DEMOLITION ACTIVITIES. WORK ITEMS ON THIS DRAWING ARE SHOWN THUS "□". THIS DRAWING IS NOT TO SCALE.

FROM SHT 48 OF 63  
77-S-6  
CONTRACT  
APRIL 1977



CITY OF ANN ARBOR - WATER RESOURCE RECOVERY FACILITY

RETENTION BASIN TOP PLAN

SCALE  
AS SHOWN  
DRAWING No.  
P-5

SHEET No.

P-5



CITY OF ANN ARBOR  
PUBLIC SERVICES  
301 EAST HURON STREET  
ANN ARBOR, MI 48106-6647  
www.a2gov.org

REV.

01 ISSUED FOR BIDS  
8/19/25  
90% OWNER REVIEW

DATE  
7/25/25  
DRAWN

S.I.D.  
S.R.P.  
S.I.D.

811  
Know what's below.  
Call before you dig.

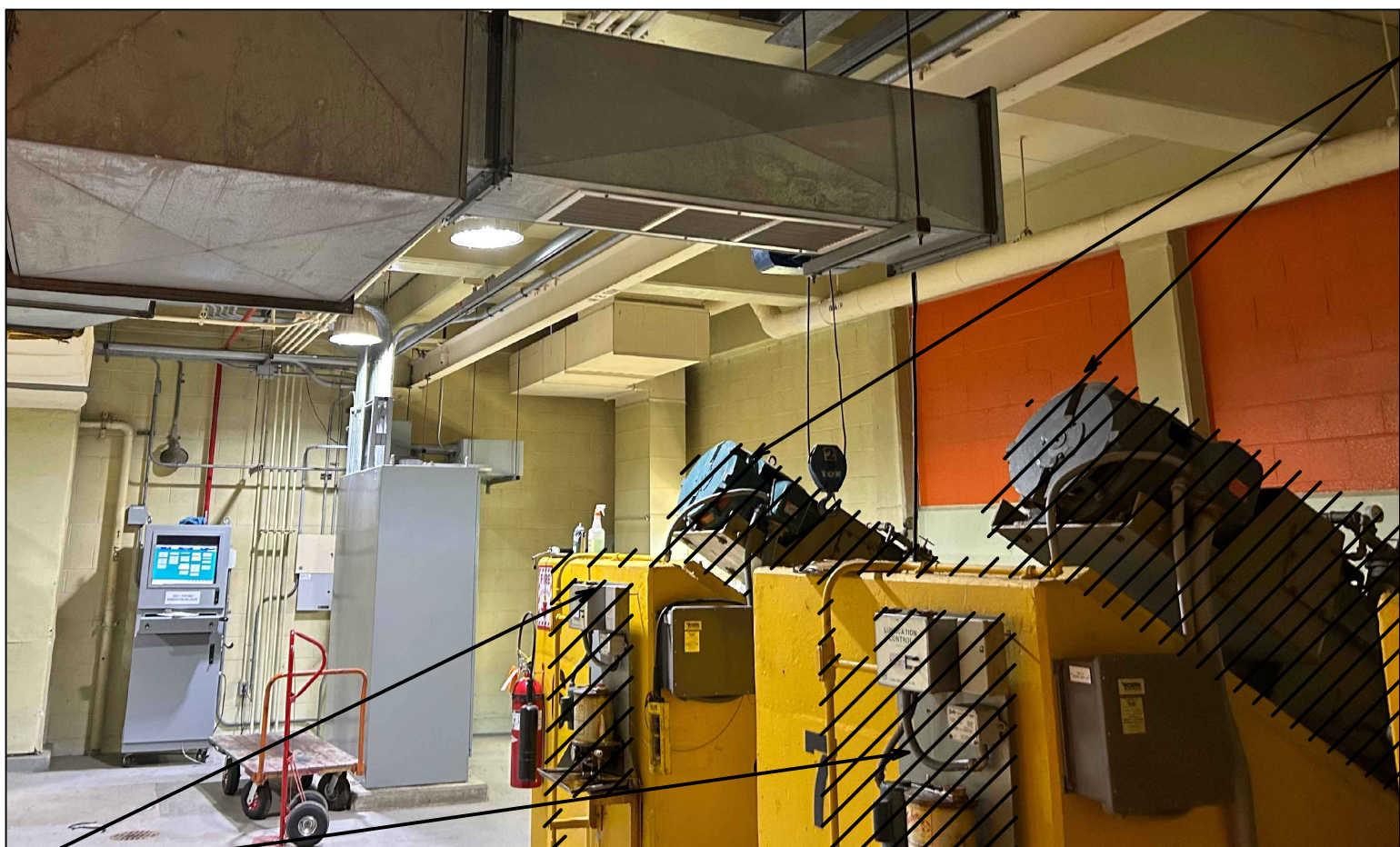


V:\202500\20250041\p\Sheets\p6\_Retention\_Basin\_Section.dwg — hrc\_olw.ctb — Plot Date: 8/18/2025 4:00:47 PM



SCREW PUMP MOTOR

OWNER'S OVERHEAD CRANE. SEE SPEC SECTION 01950 FOR ADDITIONAL INFORMATION.



SCREW PUMP ROOM

REMOVE AND REPLACE EXISTING SCREW PUMPS, MOTORS AND DRIVES.

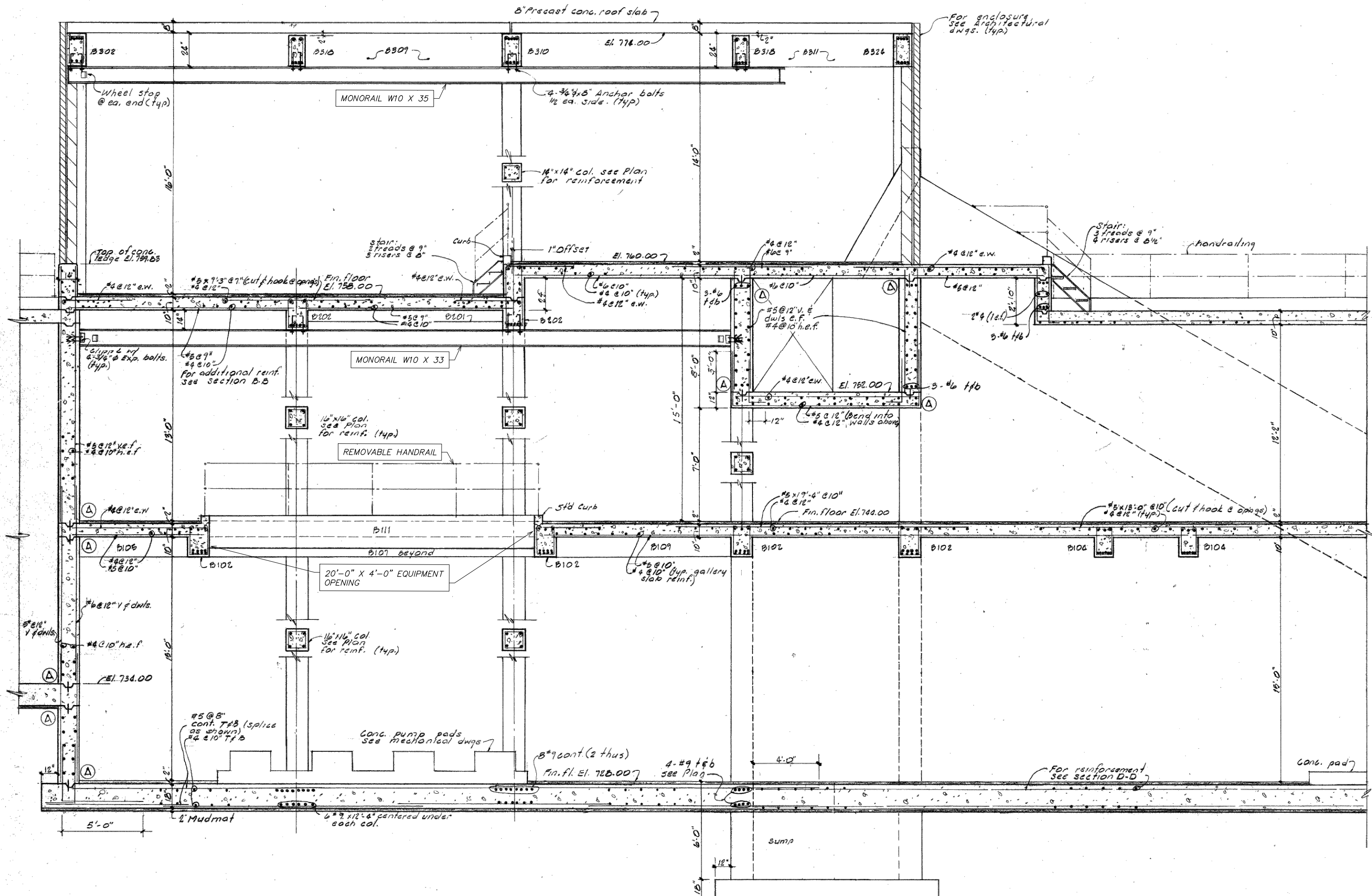


SCREW PUMP COVERS

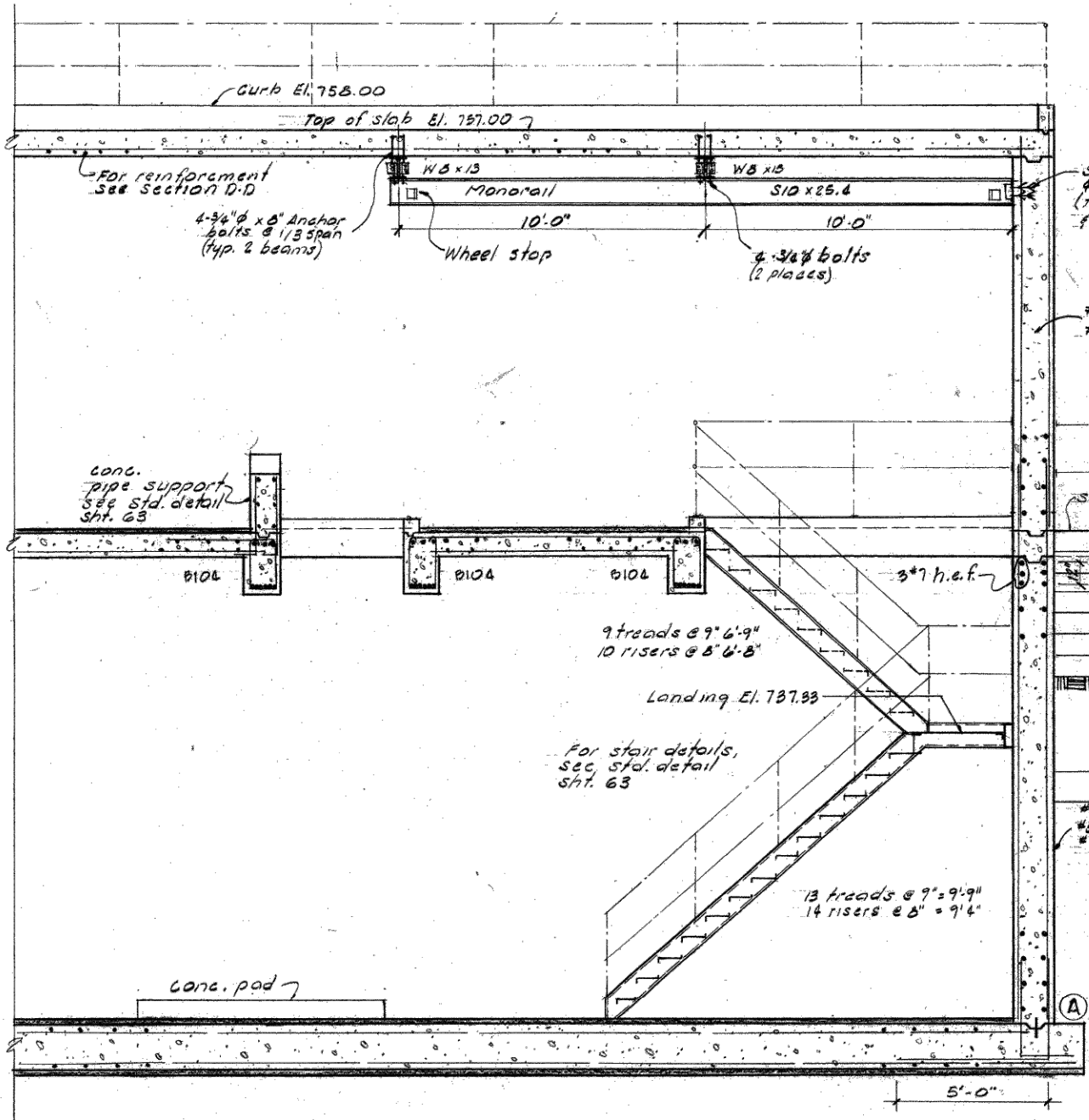
**NOTICE:**  
THIS DRAWING HAS BEEN COPIED FROM A PREVIOUS CONSTRUCTION PROJECT. NO GUARANTEE IS MADE, OR SHOULD BE ASSUMED AS TO THE COMPLETENESS OR ACCURACY OF THE INFORMATION SHOWN ON THIS DRAWING. PARTIES UTILIZING THIS INFORMATION SHALL FIELD VERIFY THE ACCURACY AND COMPLETENESS PRIOR TO CONSTRUCTION/DEMOLITION ACTIVITIES. WORK ITEMS ON THIS DRAWING ARE SHOWN THUS "□". THIS DRAWING IS NOT TO SCALE.

FROM SHT 50 OF 63  
77-S-6  
CONTRACT  
APRIL 1977

0 1 2 4 8 12  
3/16" = 1'-0"  
FOR TRUE SCALE PLOT THIS SHEET TO 34" X 22" PAPER SIZE

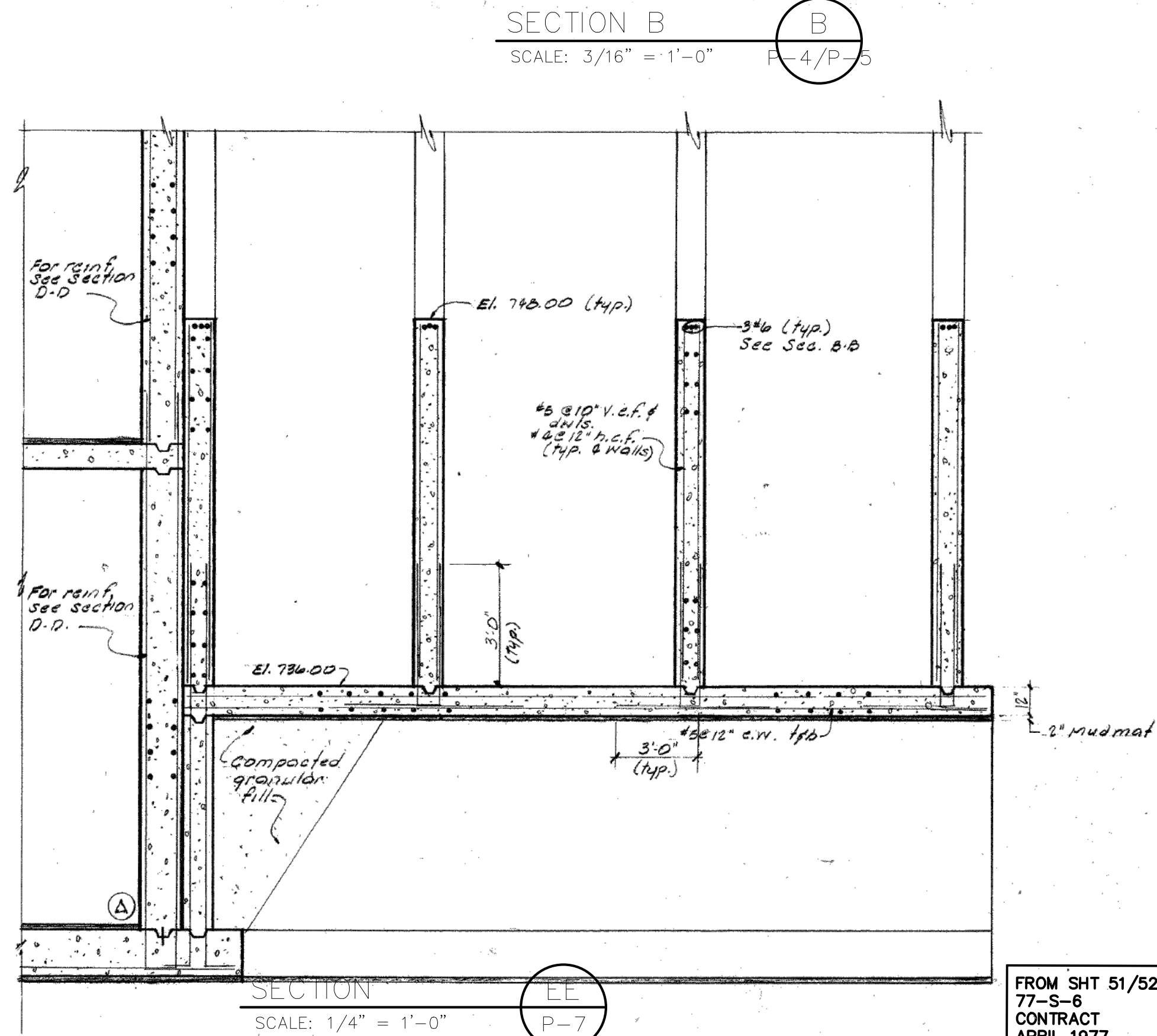
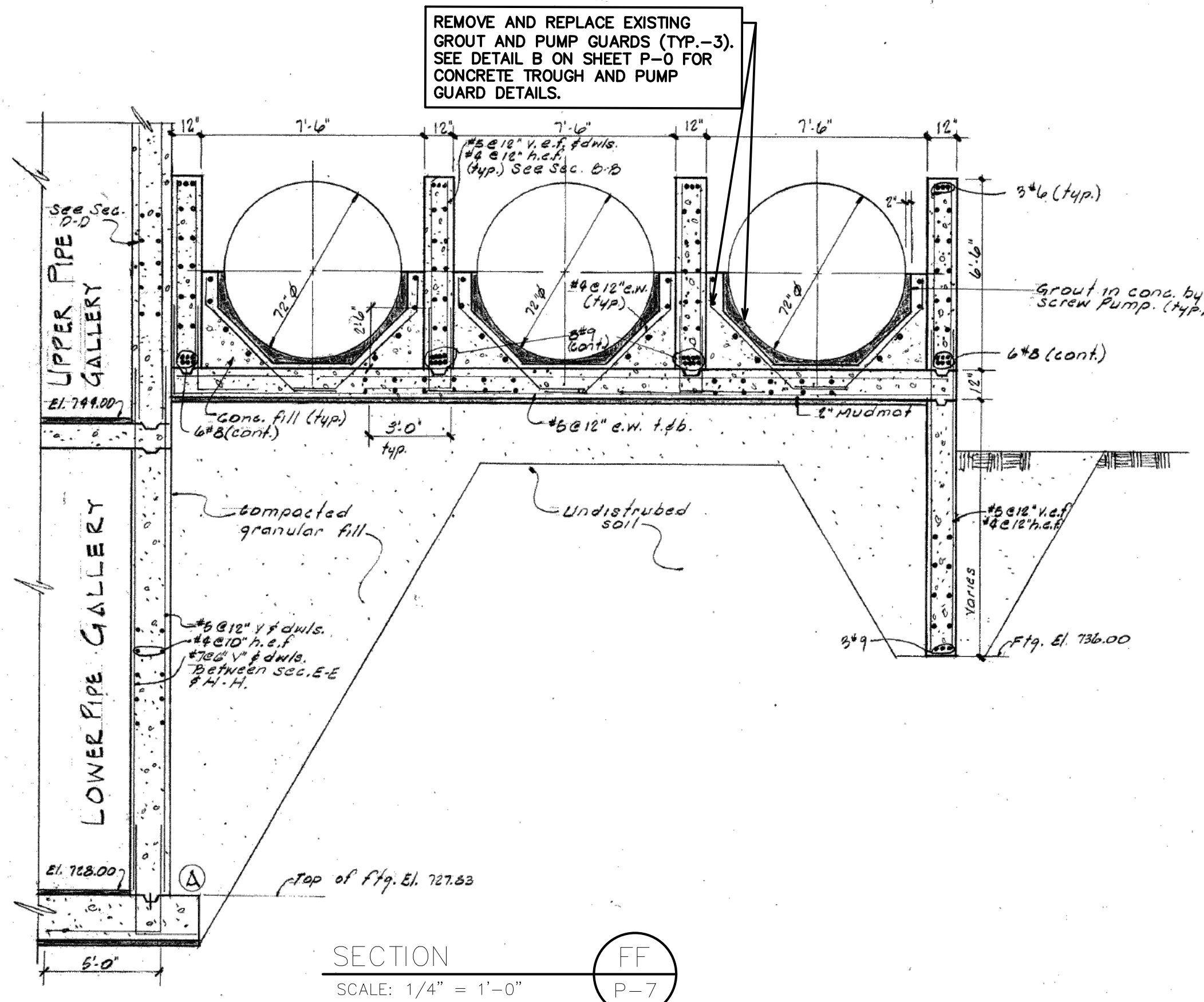


SECTION A  
SCALE: 3/16" = 1'-0"

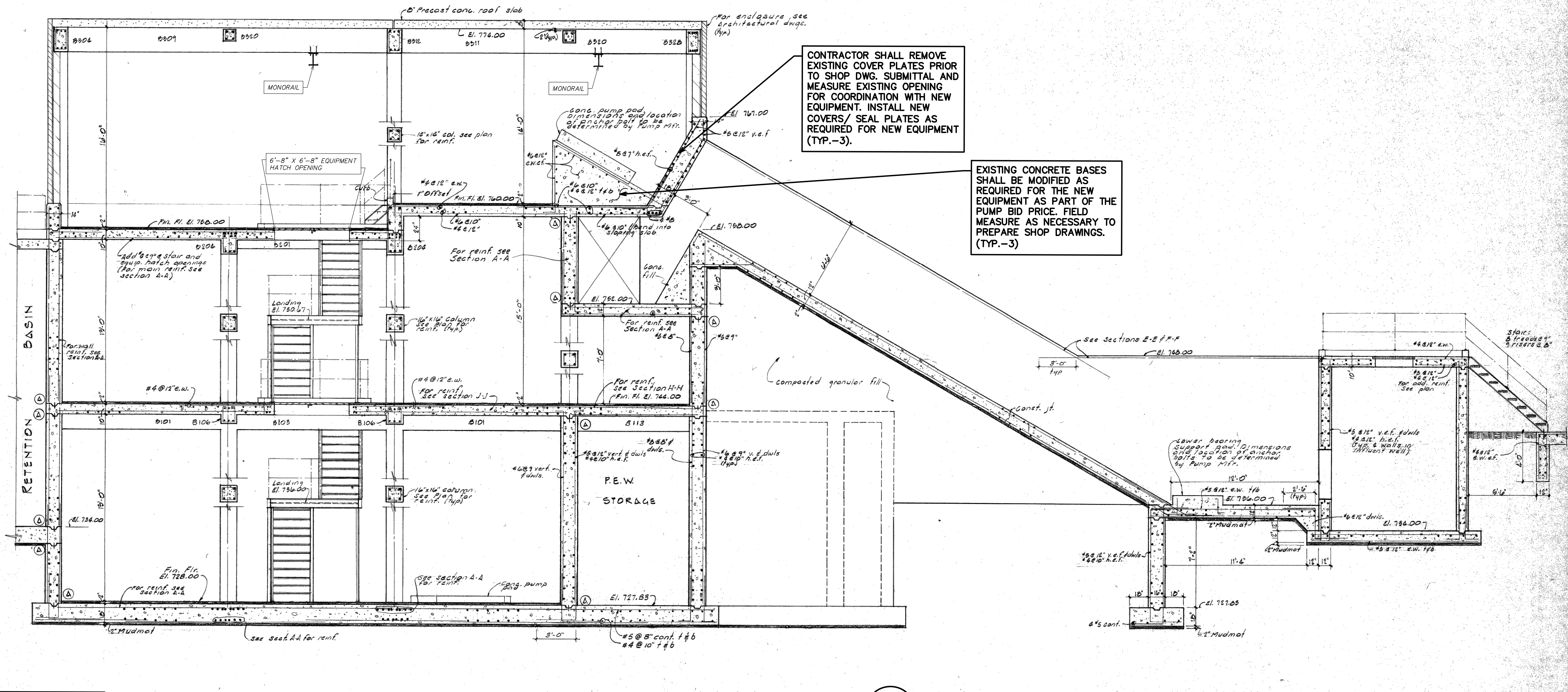
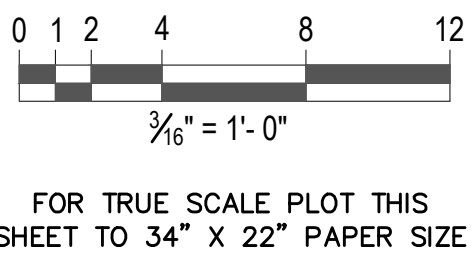




V:\202500\20250041\Sheets\P7\_Retention\_Basin\_Section.dwg — hrc\_olw.ctb — Plot Date: 8/18/2025 4:04:24 PM



**NOTICE:**  
THIS DRAWING HAS BEEN COPIED FROM A PREVIOUS CONSTRUCTION PROJECT. NO GUARANTEE IS MADE, OR SHOULD BE ASSUMED AS TO THE COMPLETENESS OR ACCURACY OF THE INFORMATION SHOWN ON THIS DRAWING. PARTIES UTILIZING THIS INFORMATION SHALL FIELD VERIFY THE ACCURACY AND COMPLETENESS PRIOR TO CONSTRUCTION/DEMOLITION ACTIVITIES. WORK ITEMS ON THIS DRAWING ARE SHOWN THUS "□". THIS DRAWING IS NOT TO SCALE.



REV.	DATE	DESCRIPTION
01	8/19/25	ISSUED FOR BIDS
00	7/25/25	90% OWNER REVIEW





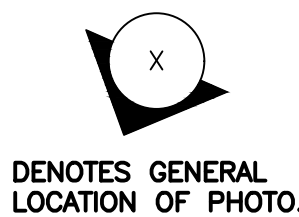


### GENERAL NOTES

- WORK SHOWN ON THIS SHEET IS FOR  
REMOVAL AND REPLACEMENT OF  
EXISTING DRIVES AND MOTORS FOR  
PUMP NOS. 6, 7 AND 8. SHOULD  
OWNER ELECT TO REMOVE AND  
REPLACE EXISTING MOTORS AND  
DRIVES FOR PUMP STATION NOS. 1,  
2 AND 3 THE SCOPE OF WORK  
SHALL BE SIMILAR. SEE DRAWING  
P-0, SCOPE OF WORK NOTES. SEE  
ADDITIONAL DEMO NOTES ON SHEET  
P-0.



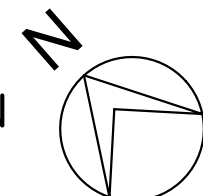
**NOTICE:**  
THIS DRAWING HAS BEEN COPIED FROM A PREVIOUS CONSTRUCTION PROJECT. NO GUARANTEE IS MADE, OR SHOULD BE ASSUMED AS TO THE COMPLETENESS OR ACCURACY OF THE INFORMATION SHOWN ON THIS DRAWING. PARTIES UTILIZING THIS INFORMATION SHALL FIELD VERIFY THE ACCURACY AND COMPLETENESS PRIOR TO CONSTRUCTION/DEMOLITION ACTIVITIES. WORK ITEMS ON THIS DRAWING ARE SHOWN THUS "[ ]". THIS DRAWING IS NOT TO SCALE.



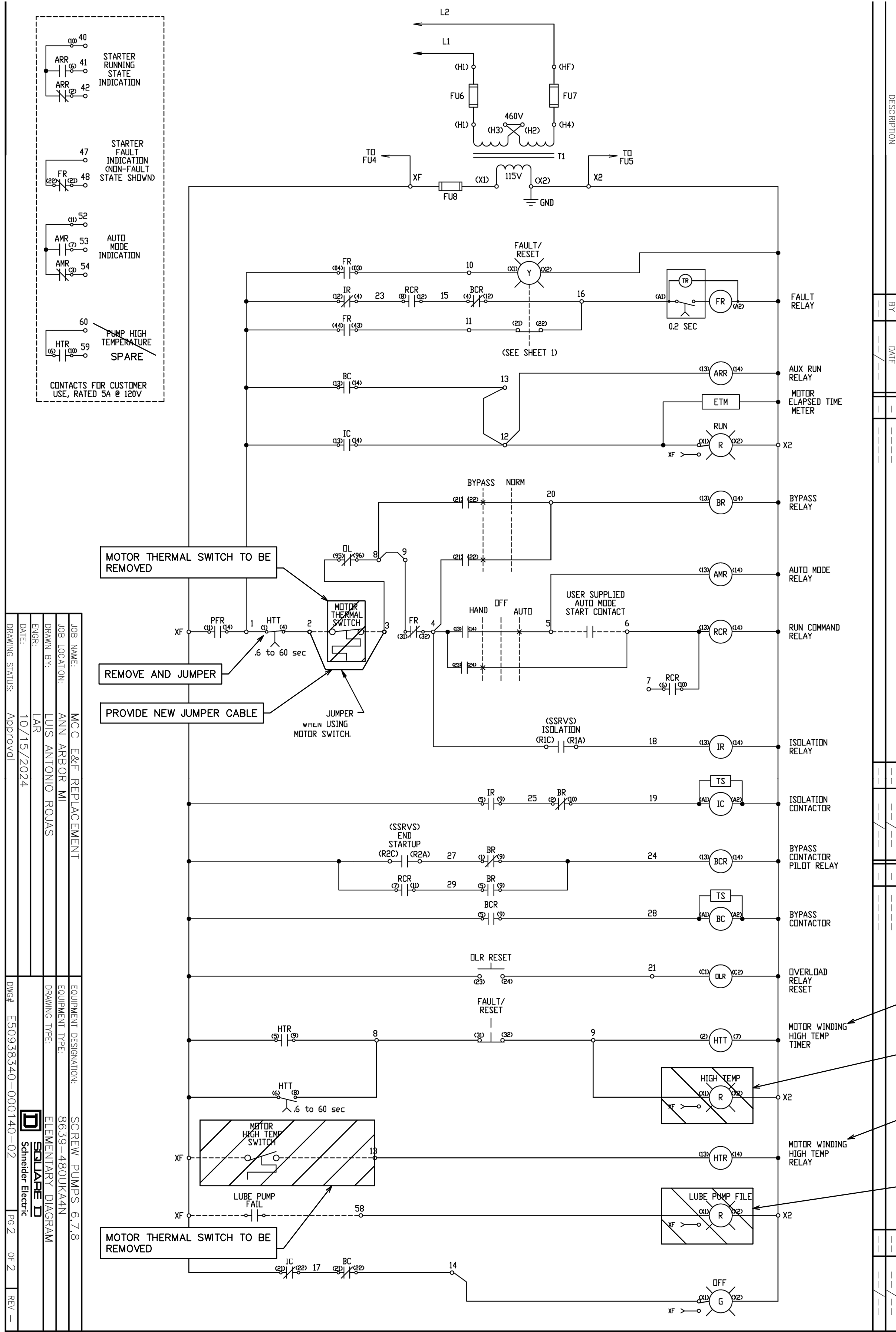
$\frac{1}{4}'' = 1' - 0''$

FOR TRUE SCALE PLOT THIS  
SHEET TO 34" X 22" PAPER SIZE

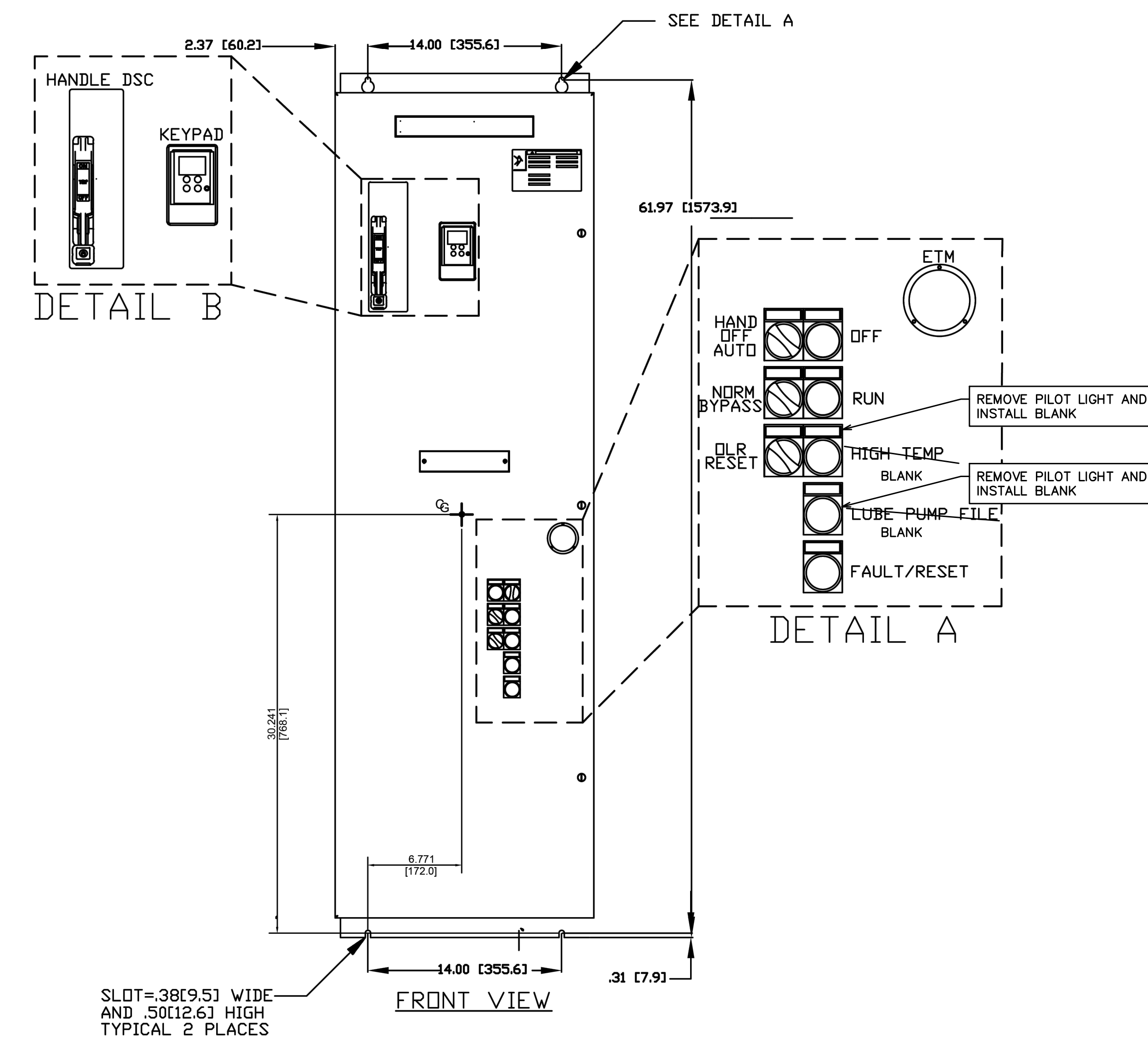
SCALE: 1/4" = 1'-0"







TYPICAL RETENTION BASIN SCREW PUMP SOFT STARTER WIRING DIAGRAM

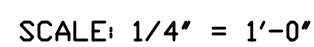


TYPICAL SCREW PUMP SOFT STARTER ENCLOSURE MODIFICATIONS

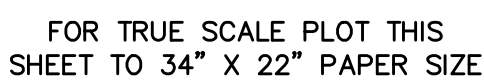
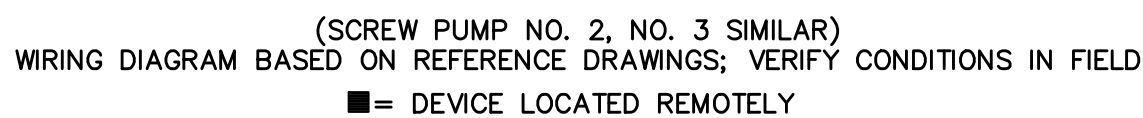
**NOTICE:**  
THIS DRAWING HAS BEEN COPIED FROM A PREVIOUS CONSTRUCTION PROJECT. NO GUARANTEE IS MADE, OR SHOULD BE ASSUMED AS TO THE COMPLETENESS OR ACCURACY OF THE INFORMATION SHOWN ON THIS DRAWING. PARTIES UTILIZING THIS INFORMATION SHALL FIELD VERIFY THE ACCURACY AND COMPLETENESS PRIOR TO CONSTRUCTION/DEMOLITION ACTIVITIES. WORK ITEMS ON THIS DRAWING ARE SHOWN THUS " ". THIS DRAWING IS NOT TO SCALE.

DRAWING STATUS	Approval
DATE:	10/15/2024
ENGINEER:	LAR
DRAWN BY:	LUIS ANTONIO ROSAS
JOB NAME:	MCC E&F REPLACEMENT
JOB LOCATION:	ANN ARBOR MI
EQUIPMENT DESIGNATION:	SCREW PUMPS 6/7/8
EQUIPMENT TYPE:	8639-480URKAN
DRAWING TYPE:	ELEMENTARY DIAGRAM
DESIGNED BY:	Schneider Electric
PROJECT NO:	E5035340-000140-02
REV:	0-2

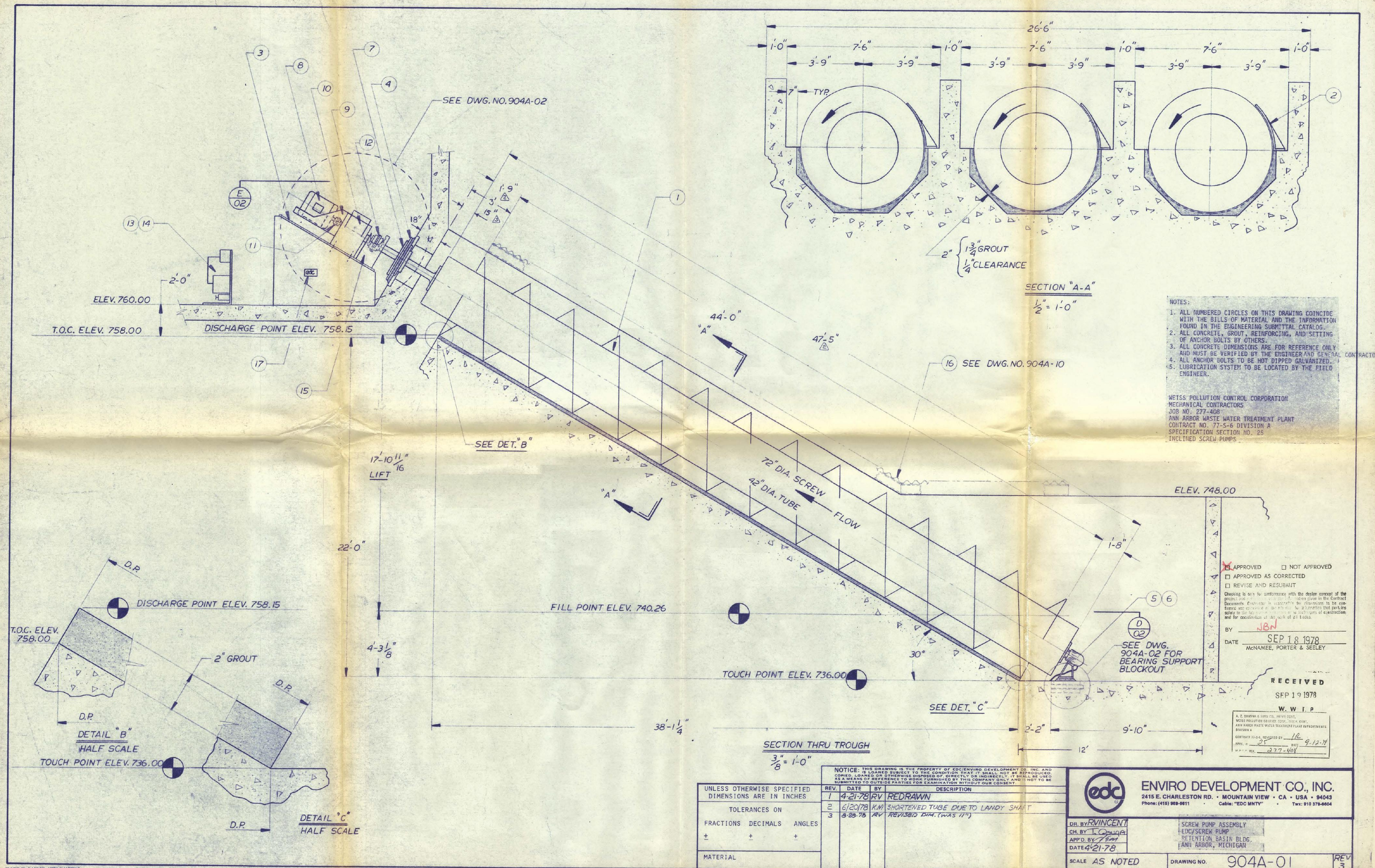




\* REBALANCE EXISTING LOADS AS REQUIRED.







**NOTICE:**

THIS DRAWING HAS BEEN COPIED FROM A PREVIOUS CONSTRUCTION PROJECT AND IS PROVIDED FOR INFORMATION ONLY. NO GUARANTEE IS MADE, OR SHOULD BE ASSUMED AS TO THE COMPLETENESS OR ACCURACY OF THE INFORMATION SHOWN ON THIS DRAWING. PARTIES UTILIZING THIS INFORMATION SHALL FIELD VERIFY THE ACCURACY AND COMPLETENESS PRIOR TO CONSTRUCTION ACTIVITIES. THIS DRAWING IS NOT TO SCALE.







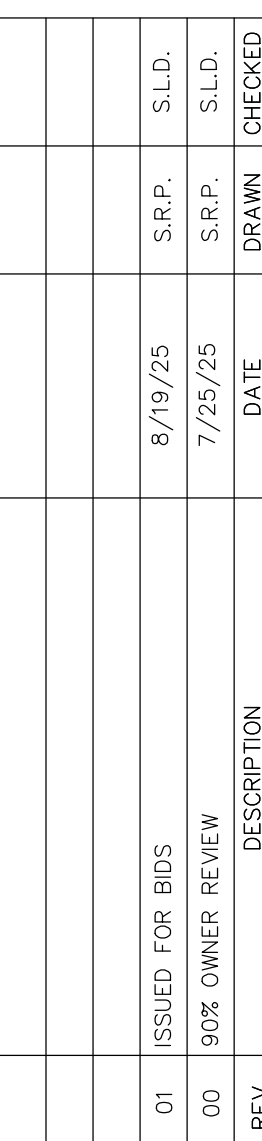
SEE NOTE SC-5 ON DWG. P-0 REGARDING  
DISMANTLING OF THE FRP DUCT PIPING.



**ANN ARBOR WWTP  
HEADWORKS IMPROVEMENTS PROJECT**  
49 S DIXBORO ROAD, ANN ARBOR MICHIGAN 48105

**NOTICE:**

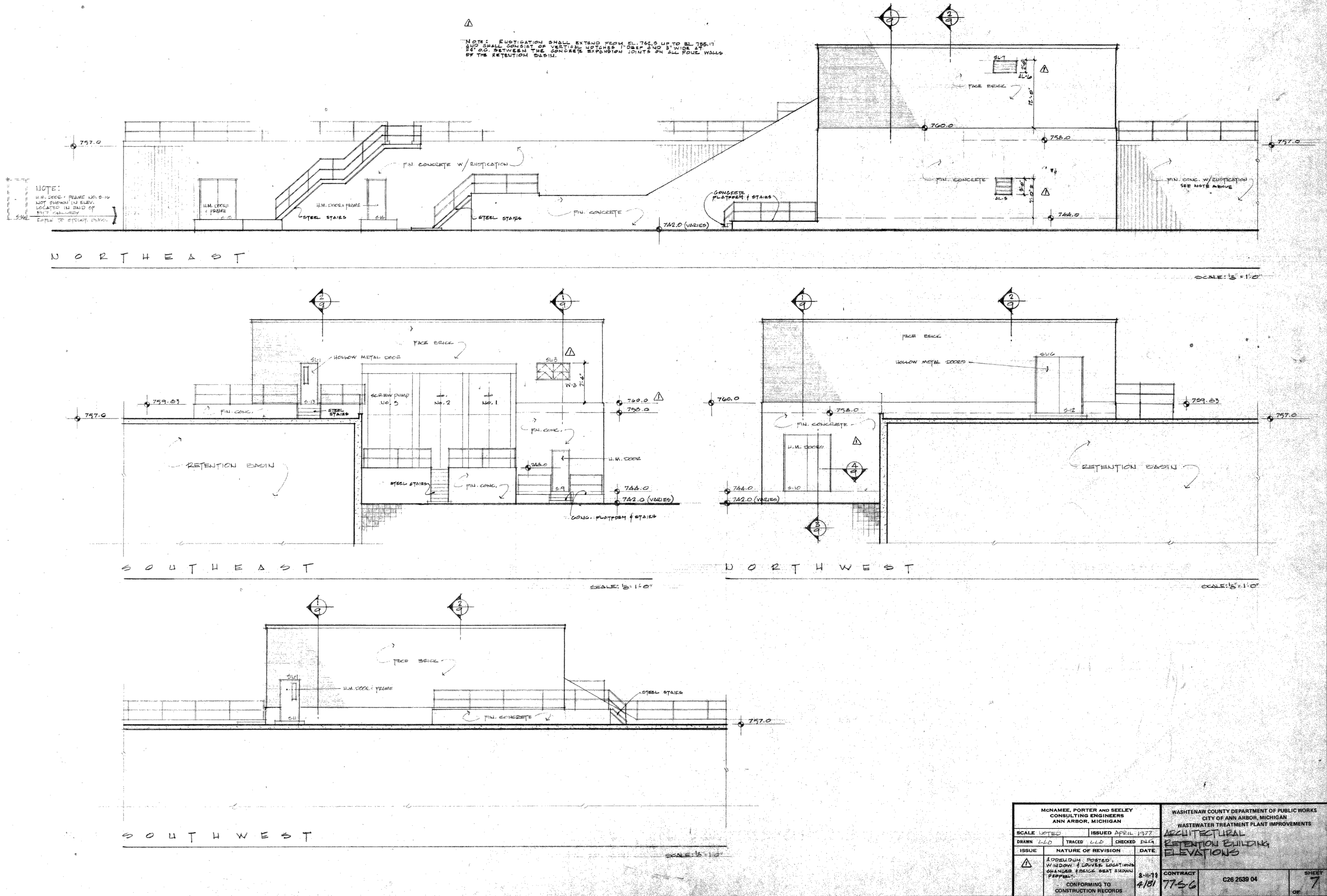
THIS DRAWING HAS BEEN COPIED FROM A PREVIOUS CONSTRUCTION PROJECT AND IS PROVIDED FOR INFORMATION ONLY. NO GUARANTEE IS MADE, OR SHOULD BE ASSUMED AS TO THE COMPLETENESS OF ACCURACY OF THE INFORMATION SHOWN ON THIS DRAWING. PARTIES UTILIZING THIS INFORMATION SHALL FIELD VERIFY THE ACCURACY AND COMPLETENESS PRIOR TO CONSTRUCTION ACTIVITIES. THIS DRAWING IS NOT TO SCALE.



AS SHOWN

REF-3





**NOTICE:**  
THIS DRAWING HAS BEEN COPIED FROM A PREVIOUS CONSTRUCTION PROJECT AND IS PROVIDED FOR INFORMATION ONLY. NO GUARANTEE IS MADE, OR SHOULD BE ASSUMED AS TO THE COMPLETENESS OR ACCURACY OF THE INFORMATION SHOWN ON THIS DRAWING. PARTIES UTILIZING THIS INFORMATION SHALL FIELD VERIFY THE ACCURACY AND COMPLETENESS PRIOR TO CONSTRUCTION ACTIVITIES. THIS DRAWING IS NOT TO SCALE.



REV.	DATE	DESCRIPTION
01	8/19/25	ISSUED FOR BIDS
00	7/25/25	90% OWNER REVIEW