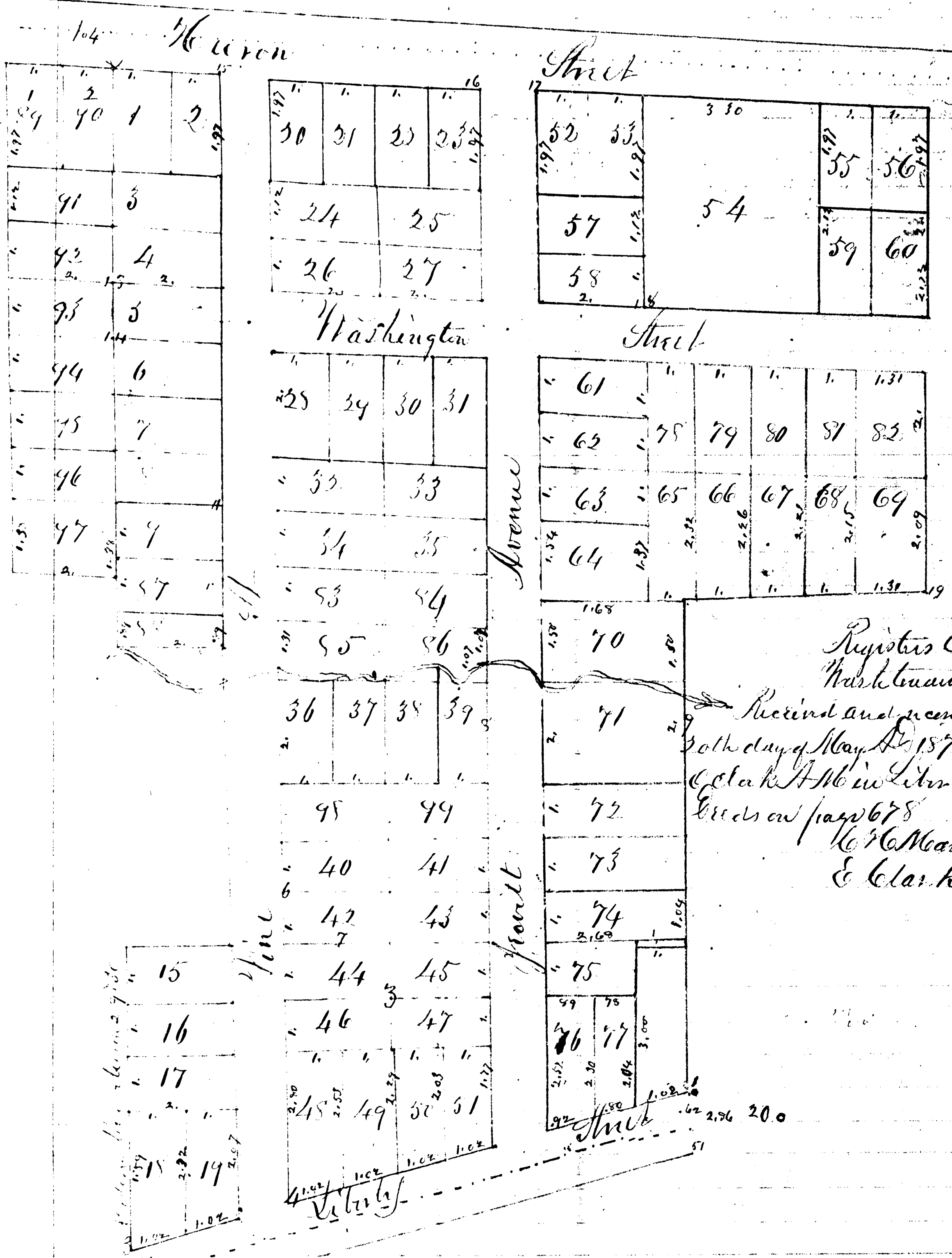


# Jewett's Addition to Ann Arbor City

For Affidavit See Liber 9 min. Records on Page 605  
 See Liber 1306 Page 539



Registrar's Office  
 Washtenaw County  
 Received and recorded this  
 30th day of May A.D. 1871 at 10<sup>00</sup>  
 O'clock A.M. in Lib. 67 of  
 Records on page 678  
 W. H. Moore, Registrar  
 E. Clark, Deput.

This addition of Samuel Jewett to the City of Ann Arbor is situated on the West half  
 of Section nine and the East half of Section 30 of Township two South of Range six  
 East, bounded North by the center of the Territorial road known as Huron Street of the  
 City of Ann Arbor, East by a line fifteen chains thirty two links East of the West line of Section  
 twelve nine and another line ten chains sixty eight links East of said line, South by  
 the center South Liberty Street known as the Old White road, West by the line between  
 Sections ten nine and thirty and a line running from Huron Street to five chains  
 and two chains and fifty links West of the Section line between Sections ten nine  
 and thirty. All streets are four rods wide, the North and South streets are parallel  
 to the Section line, The length and width of lots and lengths of lines are given in  
 small figures along the streets or lines in black ink, the lots are numbered in  
 large figures near the center of the same Thus 1, 2, 3, 4, 5

State of Michigan } I hereby certify that I have made a survey and laid out this plat  
 County of Washtenaw } called Jewett's Addition to the City of Ann Arbor and that I am a  
 Surveyor by practice and profession  
 Samuel Pittman Surveyor

I Samuel Jewett the proprietor of the land laid out in this Plat do hereby adopt  
 and make the same my plat and dedicate the streets and highways marked thereon  
 to the public in pursuance of the Statute in such cases made and provided and  
 do hereby require the Register of Deeds for the County of Washtenaw in the State aforesaid to  
 record said Plat; And Sarah W Jewett wife of the said Samuel Jewett do hereby  
 assent to the said Plat and waive and release all right to claim or to the streets laid  
 down and describe therein, In witness whereof the said Samuel Jewett and Sarah W  
 Jewett have hereunto set our hand and seals at Ann Arbor this 19th day of May A.D.  
 1871, Witnesses  
 Edward McAdams  
 John A. Gott  
 Samuel Jewett 1871  
 Sarah W Jewett 1871

State of Michigan } On this 19 day of May A.D. 1871 before me a Notary Public  
 County of Washtenaw } personally appeared Samuel Jewett and Sarah W Jewett as  
 proprietors of the within Plat to me well known who adopted, approved and  
 dedicated the above plat and executed the foregoing instrument and acknowledged  
 that they executed the same for the purposes above set forth And the said Sarah W  
 Jewett wife of the said S Jewett upon a private examination before me separately  
 and apart from her said husband acknowledged that she executed said  
 instrument freely and without any fear or compulsion from any one  
 John A. Gott Notary Public Washt Co Mich

State of Michigan } On this 19th day of May A.D. 1871 personally appeared before me  
 County of Washtenaw } a Notary Public in and for said County Samuel Pittman a Civil  
 Engineer and Surveyor in and for the City of Ann Arbor Clerk aforesaid and acknow-  
 ledged the foregoing Plat as his act and deed for the purposes therein expressed  
 John A. Gott Notary Public Washt Co Michigan

Notes of Corners

1 Locust S. S. 5 1/2 E. 1.19	11 W.C. 18 N. 6 1/4 E. 17
Sugar S. S. 16 W. 1.06	BC 22 S. 37 W. 17
Wick 14 N. 19 W. 1.42	12 BC 10 N. 55 E. 27
2 Hickory 14 S. 46 W. 0.66	BC 10 N. 55 E. 27 1/2
3 W.C. 18 S. 65 E. 0.08	13 BC 10 S. 15 E. 19
4 Locust 5 S. 34 E. 0.85	BC 10 N. 55 E. 27 1/2
Apple 3 S. 8 W. 1.41	14 Poplar 6 N. 15 W. 52 1/2
5 Sugar 2 S. 8 W. .94	BC 6 S. 36 E. 77 1/2
W.C. 3 N. 1/2 E. .33	15 Sugar 5 N. 15 1/2 W. .11
6 BC 14 S. 2 1/2 W. 1.00	BC 6 S. 5 W. .53
W.C. 28 N. 40 E. 1.04	16 Sugar 3 N. 44 W. .16
7 BC 14 W. 0.4	Sugar 2 N. 50 E. 16 1/2
8 W.C. 06 N. 42 1/2 W. 85 1/2	17 Locust 4 N. 26 E. 15
W.C. 14 N. 5 1/2 W. 66	Sugar 3 N. 44 W. 16
9 BC 25 N. 6 E. .76	18 Apple 10 S. 15 E. .12
BC 16 N. 6 1/2 W. .87	19 Locust 4 S. 35 W. .15
10 BC 20 N. 22 1/2 E. .66	20 W.C. 19 N. 25 W. 1.00
Balp 12 N. 31 W. 75	W.C. 17 S. 70 E. .82
	Apple 6 N. 15 W. .27

The last note is letter G of Maynard's corner  
 Clarke's of Liberty