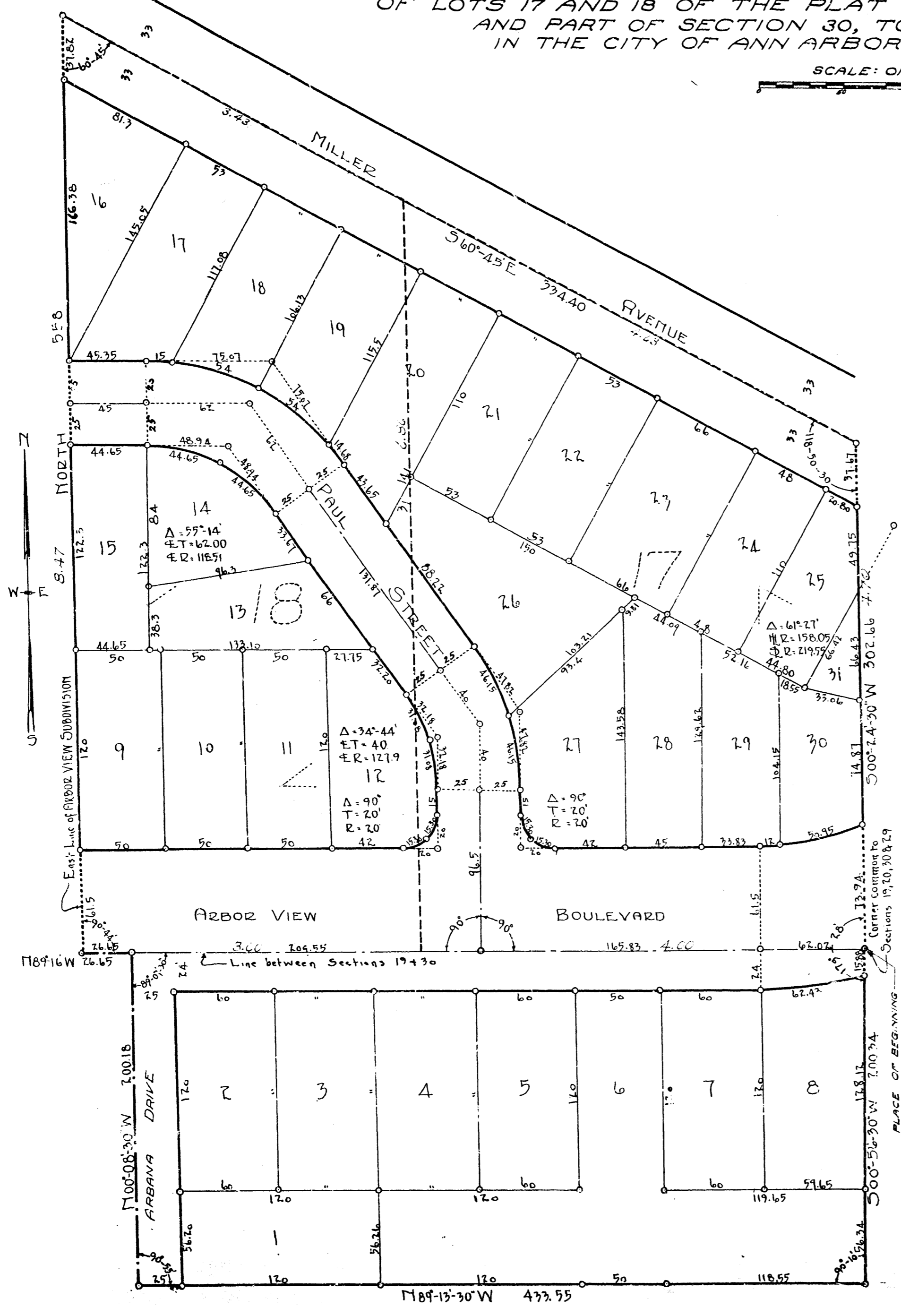
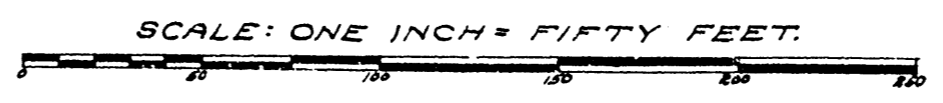


Examined and Approved
 Aug 26 1925
L. J. Harris

"JOHN ALLEN'S SUBDIVISION"

OF LOTS 17 AND 18 OF THE PLAT OF THE SOUTHEAST QUARTER SECTION 19,
 AND PART OF SECTION 30, TOWN TWO SOUTH, RANGE SIX EAST,
 IN THE CITY OF ANN ARBOR, WASHTENAW COUNTY, MICHIGAN.



DEDICATION

KNOW ALL MEN BY THESE PRESENTS, That we Florence A. Pollock, and Cathelia Selleck as proprietors, have caused the land embraced in the annexed plat to be surveyed, laid out and platted to be known as "JOHN ALLEN'S SUBDIVISION", of lots 17 and 18 of the plat of the southeast quarter section 19; and part of section 30, Town two south, Range six east, in the City of Ann Arbor, Washtenaw County, Michigan, and that the streets as shown on said plat are hereby dedicated to the use of the public.

SIGNED AND SEALED IN PRESENCE OF
William Murray } Florence A. Pollock (LS)
Gyran J. Ballard } Cathelia Selleck (LS)

STATE OF MICHIGAN S. S.
 COUNTY OF WASHTENAW
 On this ... August ... day of ... 1925 before me, a Notary Public in and for said county, personally came the above named Florence A. Pollock, and Cathelia Selleck known to me to be the persons who executed the above dedication, and acknowledged the same to be their free act and deed.
William Murray
 Notary Public, Washtenaw Co., Michigan.
 My commission expires Jan 1 1929.

CERTIFICATE OF APPROVAL BY THE BOARD OF COUNTY AUDITORS

Approved by the Board of County Auditors of Washtenaw County, Michigan, this 22 day of August, 1925.
William M. Fowler Chairman
A. A. Hammond
Edwin L. Brown

CERTIFICATE OF APPROVAL BY THE BOARD OF PUBLIC WORKS

This plat was approved by the Board of Public Works of the City of Ann Arbor, Washtenaw County, Michigan at a meeting held August 19, 1925.
J. J. Reynolds
 Clerk.

CERTIFICATE OF APPROVAL BY THE COMMON COUNCIL

This plat was approved by the Common Council of the City of Ann Arbor, Washtenaw County, Michigan, at a meeting held August 11, 1925.
J. J. Reynolds
 Clerk.

TAX CERTIFICATE

OFFICE OF THE COUNTY TREASURER, WASHTENAW COUNTY, MICHIGAN

I hereby certify That, there are no tax liens or titles held by the State on the lands described here, and that there are no tax liens or titles held by individuals on said lands for the five years preceding the 1st day of August, 1925 and that the taxes for said period of five years are fully paid, as shown by the records of this office.
Marcel E. Blaine
 County Treasurer

SURVEYOR'S CERTIFICATE

I hereby certify that the plat hereon delineated is a corner one, and that permanent monuments, consisting of iron pipes one half inch or more in diameter and twenty inches or more in length have been planted at points marked thus o as there shown at all angles in the boundaries of the land platted and at all intersections of streets.
H. H. Atwell
 Registered Civil Engineer

DESCRIPTION

The land embraced in the annexed plat of "JOHN ALLEN'S SUBDIVISION" of lots 17 and 18 of the plat of the southeast quarter section 19, and part of section 30, Town two south, Range six east, in the City of Ann Arbor, Washtenaw County, Michigan, is described as follows: Commencing at the corner common to sections 19, 20, 30, and 29, Town two south, Range six east, Washtenaw County, Michigan; thence S. 00° - 56' - 30" W. 200.34 feet; thence N. 89° - 13' - 30" W. 438.55 feet; thence N. 00° - 08' - 30" W. 200.19 feet; thence N. 89° - 13' W. 26.65 feet to the east line of "Arbor View Subdivision"; thence North along said east line of "Arbor View Subdivision" 500 feet to the center line of Miller Avenue; thence S. 60° - 45' - E. along said center line 534.40 feet; thence S. 00° - 24' - 30" W. 302.46 feet to the place of beginning.

Notes: All dimensions are given in feet and decimals thereof.

REGISTERED DEEDS
 Washtenaw County
 RECEIVED for Record this 21st day of August, A. D. 1925 at 9:30 o'clock P. M. and recorded in 6 of Plate 27 Page 27
John A. Cummings
 County Clerk