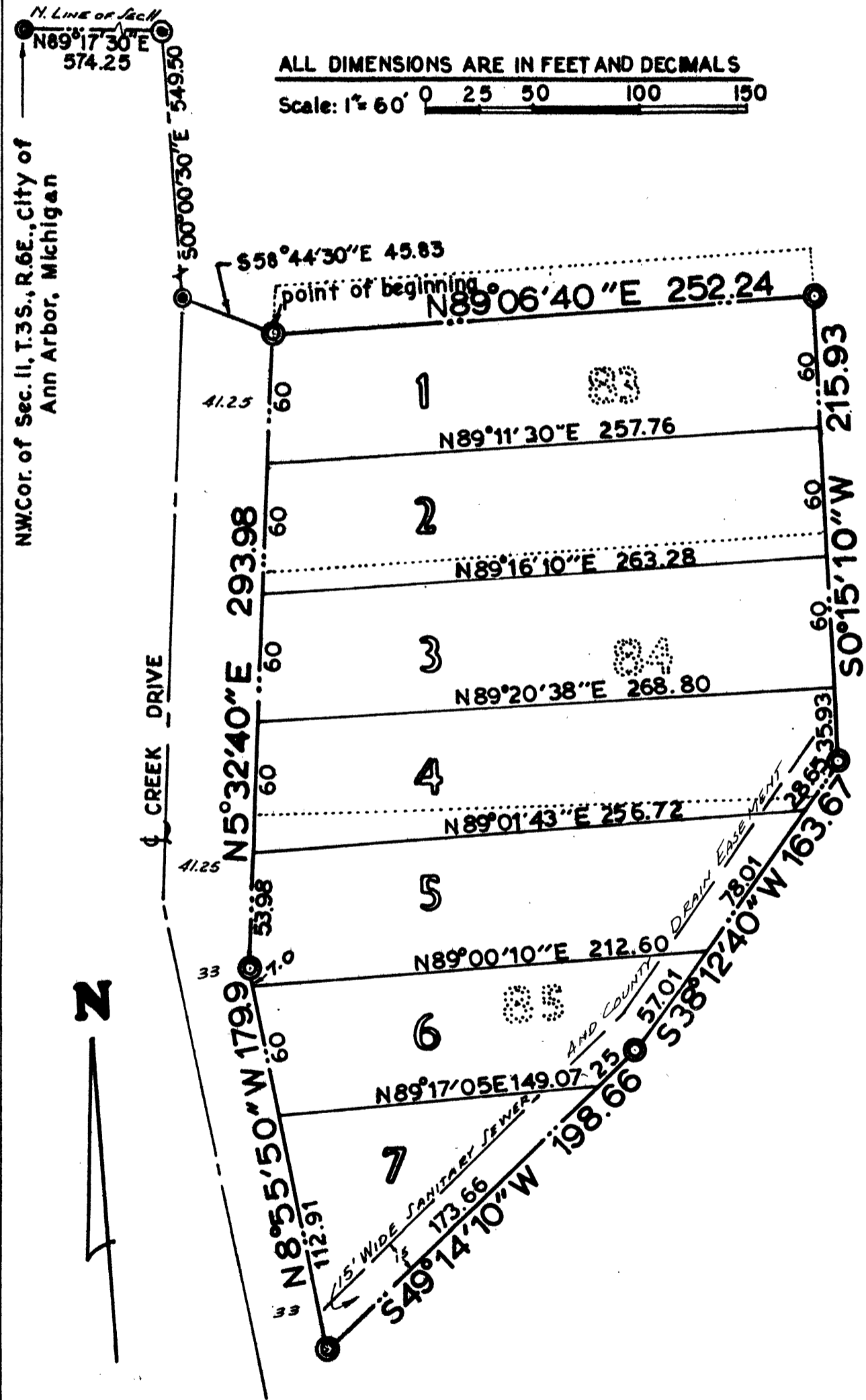


CANTERBURY SUBDIVISION

-- A REPLAT OF LOTS 85, 84 & PART OF LOT 83 OF
WAGNER-MCCOMB BOULEVARD GARDENS
being a subdivision of the W 1/2 of
the NW 1/4 of Sec. 11, T. 3S., R. 6E.,
City of Ann Arbor, Washtenaw Co.,
Mich.

Prepared by: AMERICAN ENGINEERING COMPANY
Engineers & Surveyors
Ann Arbor, Michigan

ALL DIMENSIONS ARE IN FEET AND DECIMALS
Scale: 1" = 60'



DEDICATION
KNOW ALL MEN BY THESE PRESENTS, that Sol Sonenklar and Hilda Sonenklar, his wife, as proprietors have caused the land embraced in the annexed plat to be surveyed, laid out, and platted, to be known as CANTERBURY SUBDIVISION-A Replat of Lots 85, 84 & Part of Lot 83 of Wagner-McComb Boulevard Gardens, being a Subdivision of the W 1/2 of the NW 1/4 of Sec. 11, T. 3S., R. 6E., City of Ann Arbor, Mich., and that the sanitary sewer easement as thereon shown is to be reserved for maintenance of this utility by the City of Ann Arbor and no structures of a permanent nature shall be constructed privately thereon.

Arthur Kofman
ARTHUR KOFMAN (Witness)
Edward L. Stern
EDWARD L. STERN (Witness)

Sol Sonenklar
Sol Sonenklar
Hilda Sonenklar
Hilda Sonenklar

ACKNOWLEDGMENT

State of Michigan, }
County of Wayne } as

On this 29th day of MARCH, 1961, before me, a Notary Public in and for said county, personally came the above named Sol Sonenklar and Hilda Sonenklar, his wife, known to me to be the persons who executed the above dedication, and acknowledged the same to be their free act and deed.

Edward L. Stern
Notary Public EDWARD L. STERN

My Commission expires 1/19/1965

EDWARD L. STERN
Notary Public, Oakland County, Michigan
Acting in Wayne County, Michigan
My Commission Expires

Register's Office
Washtenaw County

Plat of
Canterbury Subdivision

was Recorded this 18th day of

October A.D., 1961 at 3:00 o'clock

P.M., in Liber 16 of Plats
on Page 5

Patricia Newkirk Hardy
Patricia Newkirk Hardy, Register of Deeds

I hereby certify this copy is a true copy of map or plat forwarded the Register of deeds for recording.

Date October 17, 1961

FILED IN AUDITOR GENERAL'S DEPT.
Date October 23, 1961

EXAMINED AND APPROVED
Date October 17, 1961

William A. Burgett
WILLIAM A. BURGETT

ACTING AUDITOR GENERAL

By *Richard E. Lomax*
Richard E. Lomax - Plat Examiner

CERTIFICATE OF APPROVAL BY THE CITY PLANNING COMMISSION

This plat was approved by the Planning Commission of the City of Ann Arbor, Mich., at a meeting held on the 25th day of April, 1961.

Richard A. Ware
Richard A. Ware, Chairman

William J. Bott
William J. Bott, Secretary.

MUNICIPAL APPROVAL

This plat was approved by the Council of the City of Ann Arbor, at a meeting held on the 1st day of May, 1961.

Fred J. Looker
Fred J. Looker, Clerk

APPROVAL BY COUNTY PLAT BOARD

This plat was approved on the 15th day of September 1961, by the Washtenaw County Plat Board.

Patricia Newkirk Hardy
Patricia Newkirk Hardy,
County Register of Deeds

J. Martin Rempp
J. Martin Rempp, Auditor

John H. Flook
John H. Flook, Drain Commissioner

Herbert G. Loeffler
Herbert G. Loeffler, Auditor

John P. Cook
John P. Cook, Auditor

DESCRIPTION OF LAND PLATTED

The land embraced in the annexed plat of CANTERBURY SUBDIVISION - A Replat of Lots 85, 84 & Part of Lot 83 of Wagner-McComb Boulevard Gardens, being a Subdivision of the W 1/2 of the NW 1/4 of Sec. 11, T. 3S., R. 6E., City of Ann Arbor, Mich., is described as follows: Commencing at a point on the North line of Sec. 11, T. 3S., R. 6E., City of Ann Arbor, Washtenaw County, Michigan, said point being located N89°17'30"E 574.25 ft. from the Northwest corner of said section and running thence S00°00'30"E 549.50 ft.; thence S58°44'30"E 45.83 ft. to a point of beginning; thence N89°06'40"E 252.24 ft.; thence N89°11'30"E 257.76 ft.; thence N89°16'10"E 263.28 ft.; thence N89°20'38"E 268.80 ft.; thence N89°01'43"E 256.72 ft.; thence N89°00'10"E 212.60 ft.; thence N89°17'05"E 149.07 ft.; thence S49°14'10"W 198.66 ft.; thence S38°12'40"W 163.67 ft.; thence S0°15'10"W 215.93 ft.; thence S38°12'40"W 163.67 ft.; thence S49°14'10"W 198.66 ft.; thence N8°55'50"W 179.9 ft.; and thence N5°32'40"E 293.98 ft. to the point of beginning. Containing Seven (7) Lots.

SURVEYOR'S CERTIFICATE

I hereby certify that the plat hereon delineated is a correct one and that permanent metal monuments consisting of bars not less than 1/2 inch in diameter and 36 inches in length, encased in concrete cylinders at least four inches in diameter and 36 inches in depth have been placed at all points marked thus (⊙) as thereon shown at all angles in the boundaries of the land platted and at all intersections of streets with the boundaries of the plat as shown on said plat. All dimensions are given in feet and decimals thereof.

Murray J. Knowles, Jr.
Murray J. Knowles, Jr.
Reg. Civil Engr. & Surveyor #5342

COUNTY TREASURER'S CERTIFICATE

Office of County Treasurer
Washtenaw County, Michigan.

I hereby certify that there are no tax liens or titles held by the State on the lands described hereon and that there are no tax liens or titles held by individuals on said lands for five years preceding the 24th day of May, 1961, and that the taxes for said period of five years are paid, as shown by the records of this office. This certificate does not apply to taxes, if any, now in process of collection by Township or City collecting officers.

W.F. Verner
W.F. Verner (County Treasurer)

1 OF 1
10/17/1961
CANTERBURY SUBDIVISION
PAGE 15