

ADDENDUM No. 3

RFP No. 25-57

SOUTH MAPLE PARK AND DEXTER PARK IMPROVEMENTS

Due: December 3, 2025, at 2:00 PM (local time)

The information contained herein shall take precedence over the original documents and all previous addenda (if any) and is appended thereto. **This Addendum includes 8 pages.**

The Proposer is to acknowledge receipt of this Addendum No. 3, including all attachments in its Proposal by so indicating in the proposal that the addendum has been received. Proposals submitted without acknowledgement of receipt of this addendum may be considered non-conforming.

The following forms provided within the RFP Document should be included in submitted proposal:

- Attachment B – General Declarations
- Attachment D - Prevailing Wage Declaration of Compliance
- Attachment E - Living Wage Declaration of Compliance
- Attachment G - Vendor Conflict of Interest Disclosure Form
- Attachment H - Non-Discrimination Declaration of Compliance

Proposals that fail to provide these completed forms listed above upon proposal opening may be rejected as non-responsive and may not be considered for award.

I. CORRECTIONS/ADDITIONS/DELETIONS

Changes to the RFP documents which are outlined below are referenced to a page or Section in which they appear conspicuously. Offerors are to take note in its review of the documents and include these changes as they may affect work or details in other areas not specifically referenced here.

Section/Page(s)	Change
Schedule of Pricing / Cost	Schedule of Pricing/ Cost has been replaced in its entirety
Detail Sheet 5	Detail Sheet 5 has been replaced in its entirety.
Detail Sheet 6	Detail Sheet 6 has been replaced in its entirety.

II. QUESTIONS AND ANSWERS

The following Questions have been received by the City. Responses are being provided in accordance with the terms of the RFP. Respondents are directed to take note in its review of the documents of the following questions and City responses as they affect work or details in other areas not specifically referenced here.

Question 1: Can clarification be provided on the HMA court detail for Dexter Park?

Answer 1: Yes, the Schedule of Pricing / Cost and Detail Sheet 5 have been replaced in its entirety with the corrected information.

Question 2: Can clarification be provided on quantities for the HMA road patch replacement detail for Dexter Park?

Answer 2: Yes, the Schedule of Pricing / Cost and Detail Sheet 6 have been replaced in its entirety with the corrected information.

Offerors are responsible for any conclusions that they may draw from the information contained in the Addendum.

E. Schedule of Pricing/Cost – 20 Points

Company: _____

Unit Price Bid – South Maple Park

Bidders shall provide a Total Price for either the Base Bid, Alternate Bid, or both. The City may elect to award for either the Base bid or the Alternate Bid.

SOUTH MAPLE PARK IMPROVEMENTS – BASE BID (POST TENSION CONCRETE)

ITEM #	ITEM	ESTIMATED QUANTITY	UNIT	UNIT PRICE	AMOUNT
1	Site Preparation/Grading	1	LSUM		
2	Cleanup and Restoration	1	LSUM		
3	Tree and Stump Removal	1	LSUM		
4	Turf Establishment	1	LSUM		
5	Sidewalk, Conc., 4"	5430	SFT		
6	Aggregate Base, 8" (Parking Lot)	1500	SYD		
7	HMA Surface, Removal	640	SYD		
8	HMA, 4 inch	350	TONS		
9	4" Pavement Markings - Regular Dry (White)	220	FT		
10	Pavement Markings, Overlay Cold Plastic, Handicap Symbol - Blue	2	EA		
11	4" Pavement Markings - Regular Dry (Blue)	180	LFT		
12	ADA Signage	2	EA		
13	Sidewalk, Conc., Removal	100	SYD		
14	6" x 6" Post with Solar Dock Lighting	8	EA		
15	Concrete Bumper Blocks	13	EA		
16	Trash Receptacle	1	EA		
17	Bench (5')	4	EA		
18	Drainage Swale	335	LFT		
19	Pickleball Court - Vinyl Coated Fence - 8' (w/ 4 single entrance gates and 1 double entrance gate)	410	FT		
20	Pickleball Court - Post Tension Conc.	8700	SFT		
21	Pickleball Court, Nets and Post System	4	EA		
22	Pickleball Court - Color Coating, Striping	1	LSUM		
23	Tennis Court - Vinyl Coated Fence - 8' (w/ 3 single entrance gates and 1 double-entrance gates)	456	FT		
24	Tennis Court - Post Tension Conc.	12960	SFT		

25	Tennis Court, Nets and Post System	2	EA		
26	Tennis Court - Color Coating, Striping	1	LSUM		
27	Storm Sewer, PVC, 15 inch, Tr Det A	144	FT		
28	Storm Sewer, PVC, 12 inch, Tr Det A	48	FT		
29	Storm Sewer, PVC, 12 inch, Tr Det B	59	FT		
30	Storm Sewer, PVC, 6 inch, Tr Det B	10	FT		
31	Dr Structure, 48 inch Dia.	2	EA		
32	Dr Structure Cover, Type E	3	EA		
33	Dr Structure, 24 inch Dia.	2	EA		
34	Dr Structure Cover, Type B	1	EA		
35	Storm Sewer, Tap, 6 inch	1	EA		
36	12 inch Storm Sewer (End Section)	1	EA		
37	15 inch Storm Sewer (End Section)	1	EA		
38	Outlet Control Structure	1	EA		
39	RipRap	6	SYD		
40	SESC Measures (Inlet Protection)	1	LSUM		
41	SESC Measures (Silt Fence)	1750	FT		
42	Bioswale Plantings	780	EA		
43	Construction Staking	1	LSUM		
44	Mobilization, Max 10%	1	LSUM		

SOUTH MAPLE PARK BASE BID TOTAL

\$ _____

SOUTH MAPLE PARK IMPROVEMENTS – ALTERNATE BID (HMA)

Provide Bid Total using the items noted below in lieu of Items #20 and #24 noted in the Base Bid above.

ITEM #	ITEM	ESTIMATED QUANTITY	UNIT	UNIT PRICE	AMOUNT
45	Pickleball Court - Aggregate Base, 6"	960	SYD		
46	Pickleball Court, HMA, 3"	262	TONS		
47	Tennis Court - Aggregate Base, 6"	1440	SYD		
48	Tennis Court - HMA, 3"	393	TONS		

SOUTH MAPLE PARK ALTERNATE BID TOTAL

\$ _____

Unit Price Bid – Dexter Park

Bidders shall provide a Total Price for either the Base Bid, Alternate Bid, or both. The City may elect to award for either the Base bid or the Alternate Bid.

DEXTER PARK IMPROVEMENTS – BASE BID (POST TENSION CONCRETE)

ITEM #	ITEM	ESTIMATED QUANTITY	UNIT	UNIT PRICE	AMOUNT
1	Site Preparation/Grading	1	LSUM		
2	Tree and Stump Removal	1	LSUM		
3	Accessible Grill	2	EA		
4	Turf Establishment	1	LSUM		
5	Construct 20' x 44' Pavilion and 22' x 46' Concrete Pad	1	LSUM		
6	Sunbolt Table (Model #PPM-SQ-3B)	1	EA		
7	Sidewalk, Conc., Removal	22	SYD		
8	Sidewalk, Conc., 4"	1600	SFT		
9	Solas Ray Lighting (Model #SOPH-06-30K-V)	8	EA		
10	Tulip Tree, 8' Ht. (B&B)	2	EA		
11	Arborvitae, 6' Ht. (B&B)	16	EA		
12	Landscape, #1 cont	42	EA		
13	Seeding, Lowland	940	SYD		
14	Trash Receptacle	1	EA		
15	Bike Bollards	12	EA		
16	Bench (6')	3	EA		
17	HMA, Removal	57	SYD		
18	Aggregate Base, 6 inch 21AA	57	SYD		
19	HMA - 5" Depth	16	TONS		
20	Chain Link Fence - Vinyl Coated Fence - 6'	150	FT		
21	Chain Link Fence - Vinyl Coated Fence - 8'	60	FT		
22	Basketball Court - Post Tension Conc.	5820	SFT		
23	Basketball Goal (Including Post, Net and Backboard) - 8' Ht.	2	EA		
24	Basketball Goal (Including Post, Net and Backboard) - 10' Ht.	2	EA		
25	Basketball Court - Color Coating, Striping	1	LSUM		
26	Sanitary Sewer Tap, 4 inch (to MH #4349)	1	EA		
27	Sanitary Sewer, 4 inch	40	FT		
28	Curb Stop and Box, 1 inch	1	EA		

29	Water Service, Type K Copper, 1/2 inch, Tr Det G	65	FT		
30	Water Main Tap, 12 inch (By City)	1	EA		
31	Drinking Fountain (440 SMFA w/ Pet Fountain)	1	EA		
32	Conc. Curb	31	FT		
33	Curb and Gutter, Rem	31	FT		
34	Traffic Control	1	LSUM		
35	Construction Staking	1	LSUM		
36	Dr Structure, 48 inch Dia.	1	EA		
37	Storm Sewer, RCP CI III, 12 inch, Tr Det A	87	FT		
38	Storm Sewer, RCP CI III, 12 inch, Tr Det B	31	FT		
39	Storm Sewer, Tap, 12 inch	1	EA		
40	Outlet Control Structure, 36 inch	1	EA		
41	SESC Measures (Inlet Protection)	5	EA		
42	SESC Measures (Silt Fence)	620	FT		
43	Tree Protection Fencing	700	FT		
44	Mobilization, Max 10%	1	LSUM		

DEXTER PARK BASE BID TOTAL

\$ _____

DEXTER PARK IMPROVEMENTS – ALTERNATE BID (HMA)

Provide Bid Total using the items noted below in lieu of Item #22 noted in the Base Bid above.

ITEM #	ITEM	ESTIMATED QUANTITY	UNIT	UNIT PRICE	AMOUNT
47	Basketball Court - Aggregate Base, 6"	590	SYD		
48	Basketball Court - HMA, 3.5"	125	TONS		

DEXTER PARK ALTERNATE BID TOTAL

\$ _____

Unit Price Bid Summary

SOUTH MAPLE PARK BASE BID

\$ _____

SOUTH MAPLE PARK ALTERNATE BID

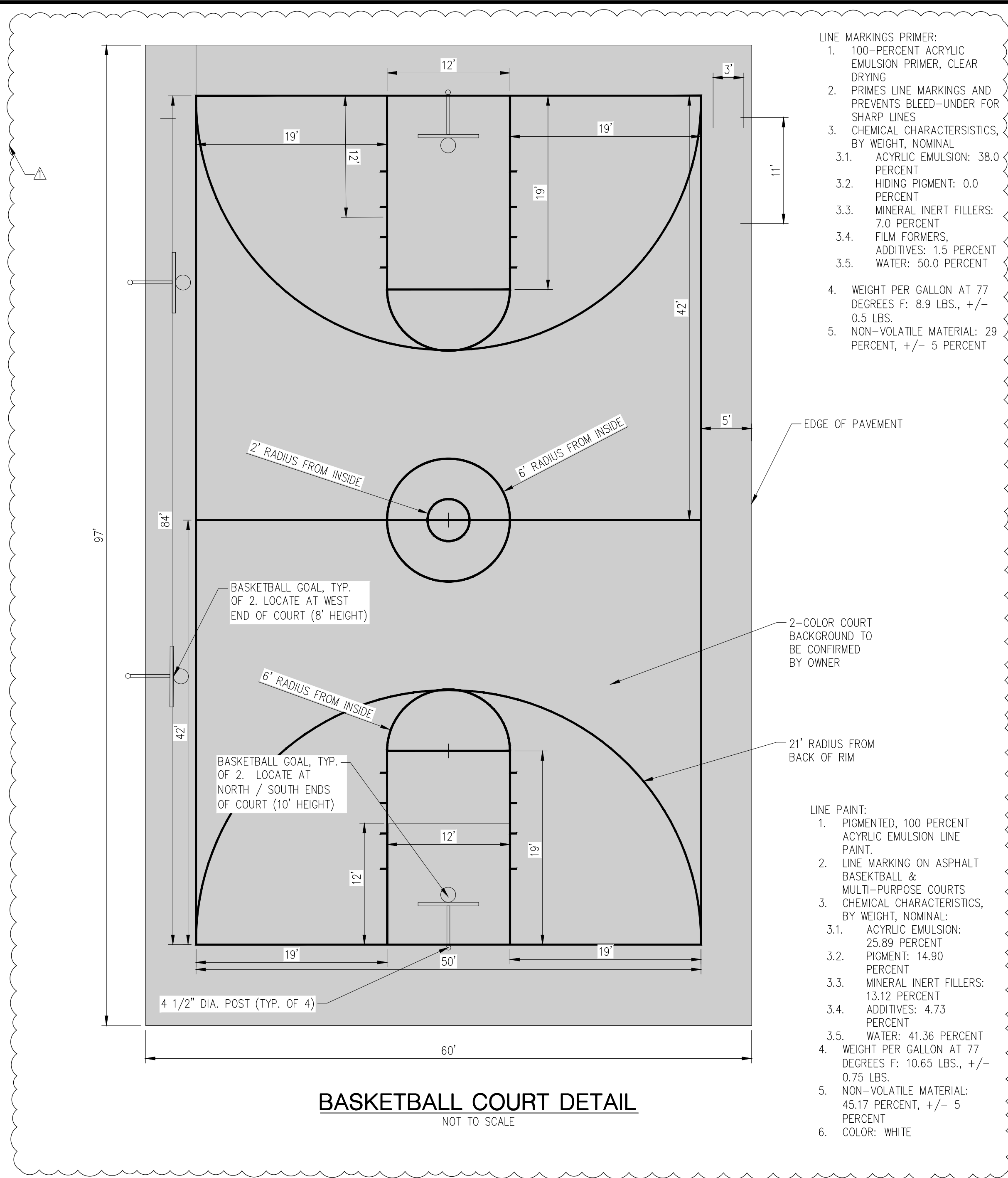
\$ _____

DEXTER PARK BASE BID

\$ _____

DEXTER PARK ALTERNATE BID

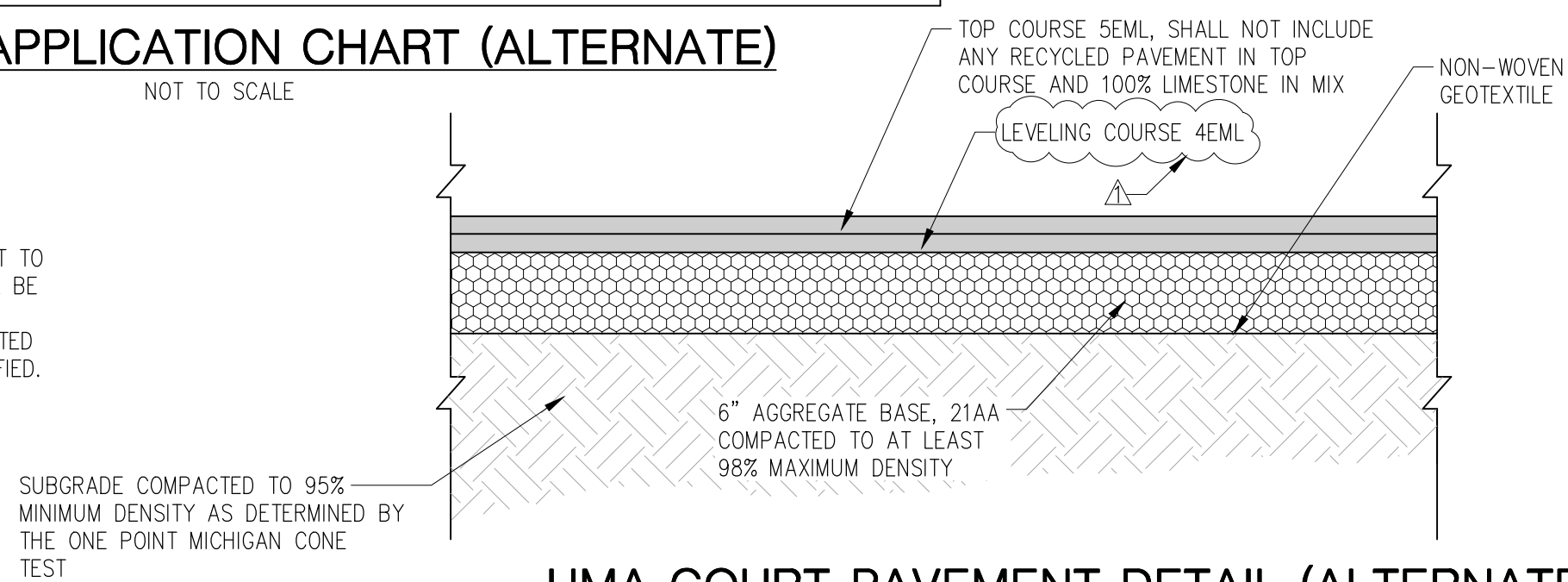
\$ _____



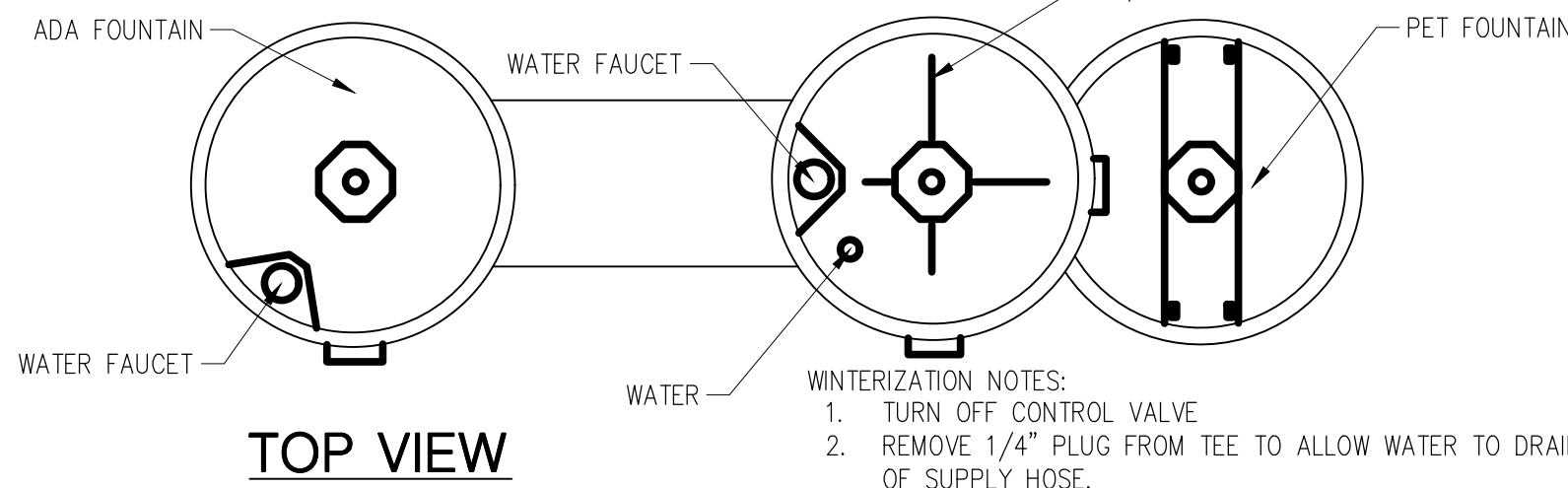
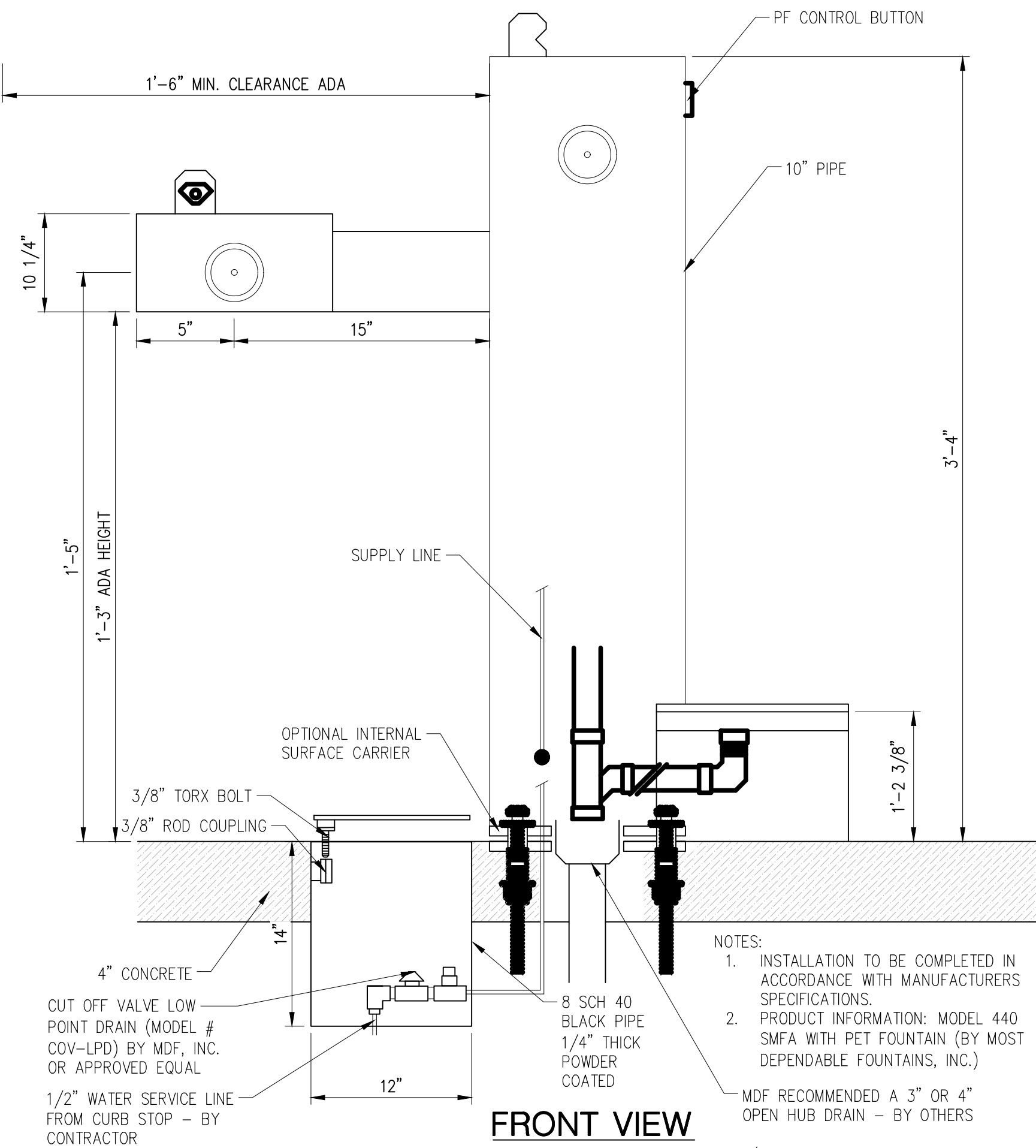
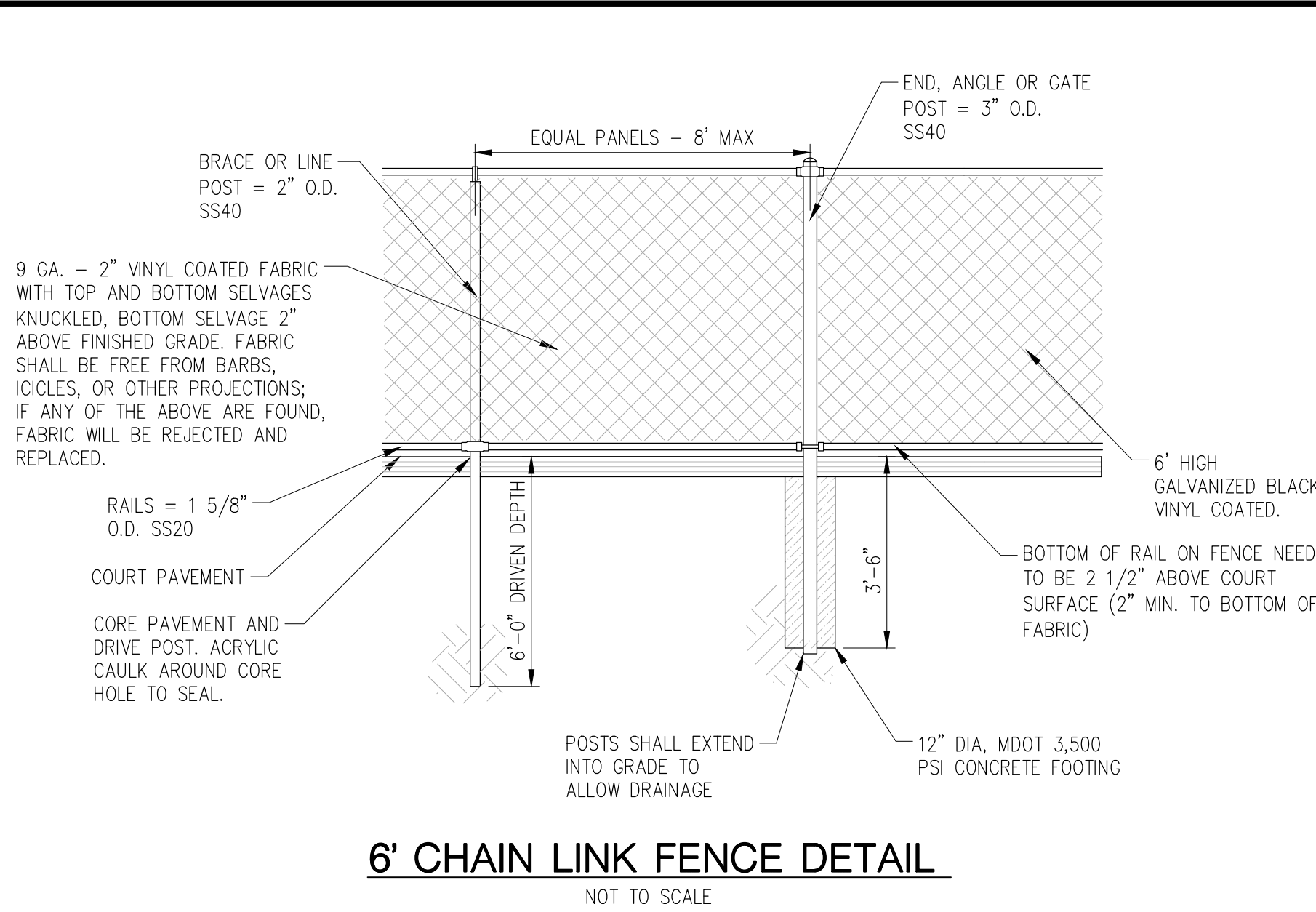
HMA PAVEMENT	RATE PER SYD	THICKNESS	PERFORMANCE GRADE	REMARKS
5EML (TOP)	165 LBS/SYD	1.5"	58-28	RAP IS NOT ALLOWED; AGGREGATE SHALL BE 100% CRUSHED LIMESTONE
4EML (LEVELING)	220 LBS/SYD	2"	58-28	RAP SHALL BE LIMITED TO TIER 1 DESIGN (17% MAX RAP BY BINDER WEIGHT)
BOND COAT 0.05 TO 0.15 GAL/SYD				
AGG. WEAR INDEX (AWI) SHALL BE 200 MIN FOR MAINLINE TOP COURSE				

HMA COURT APPLICATION CHART (ALTERNATE)
NOT TO SCALE

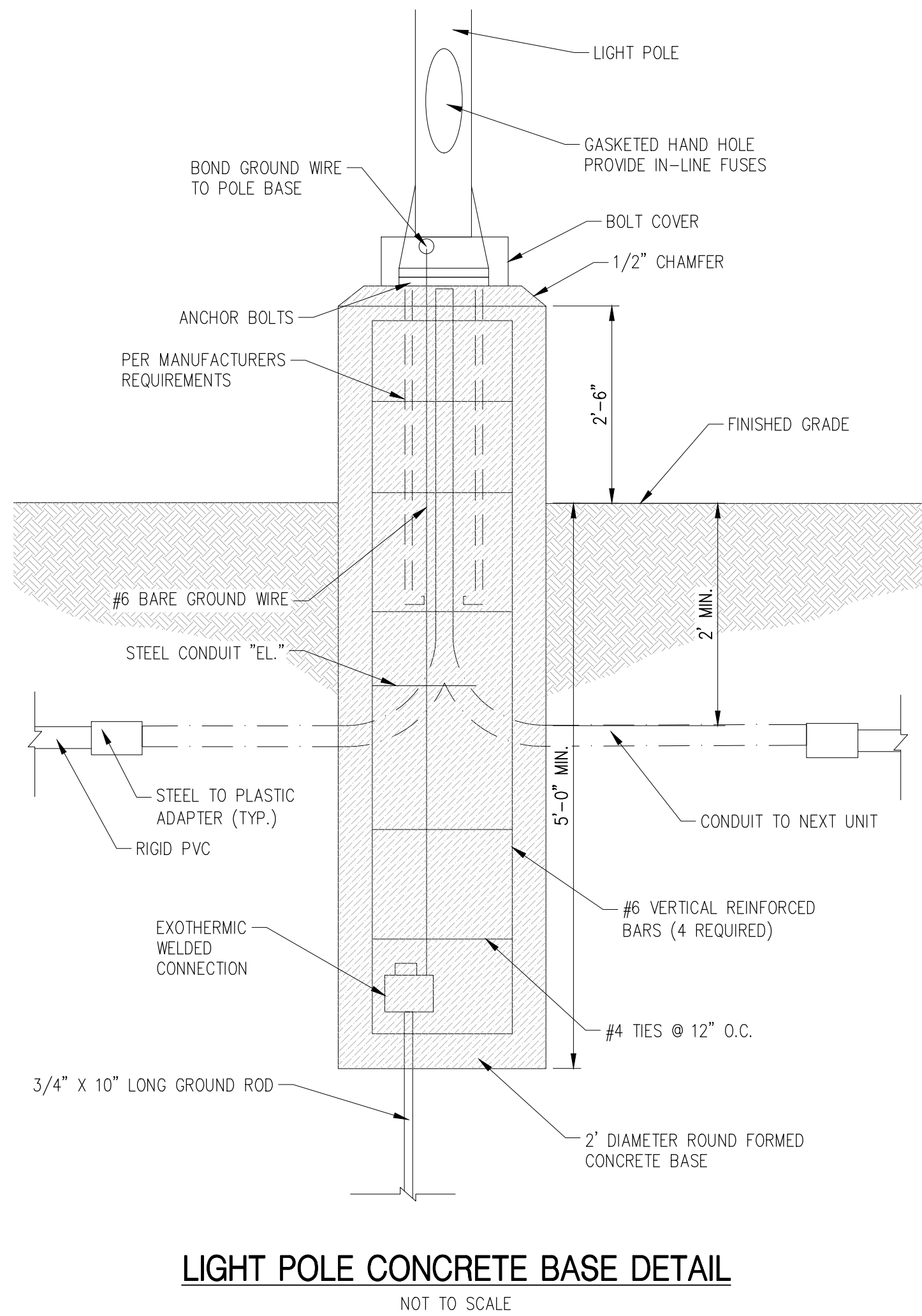
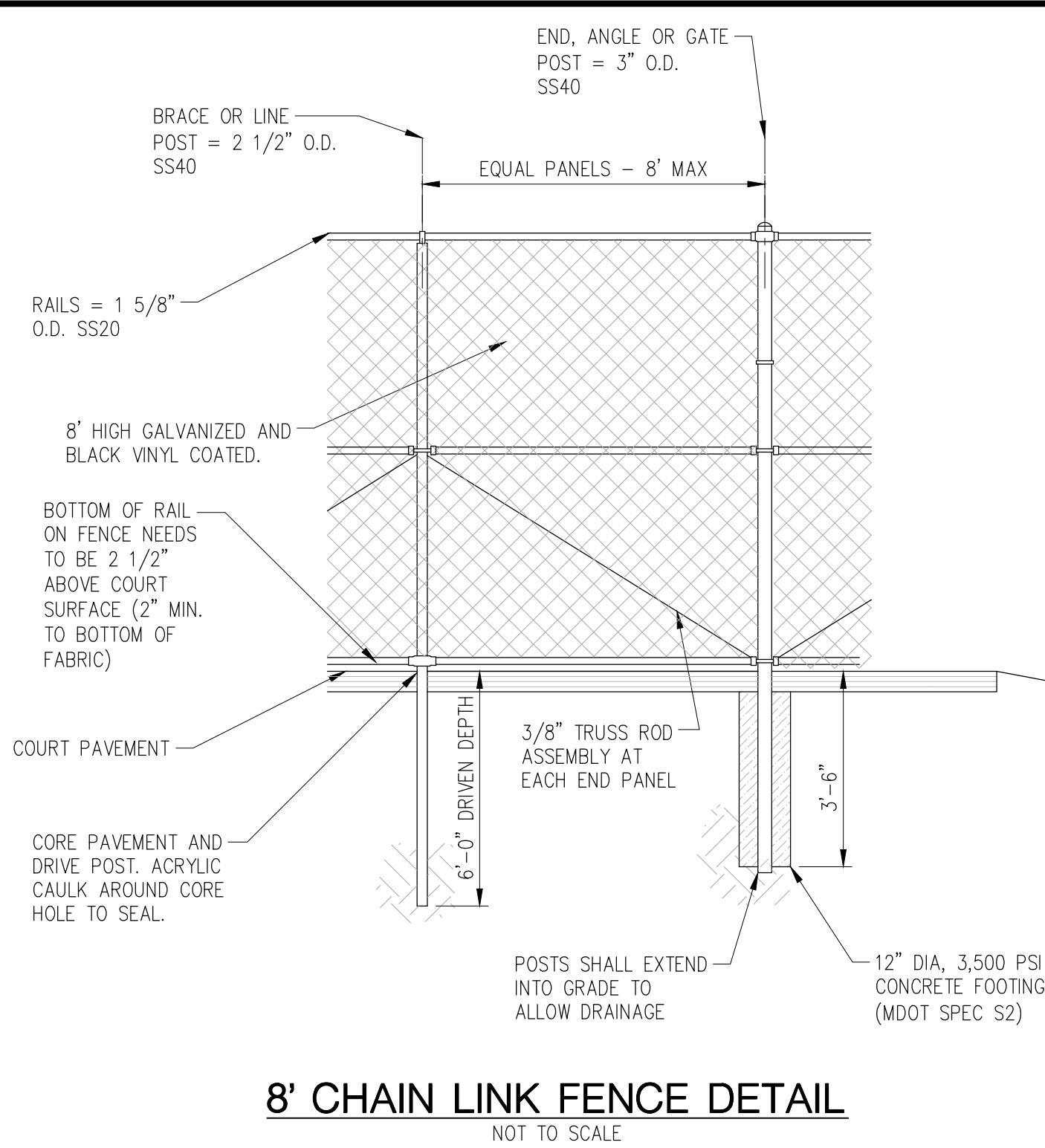
- NOTES:
- ALL DISTURBED AREAS ADJACENT TO PROPOSED CONSTRUCTION SHALL BE RESTORED WITH LIKE MATERIAL.
 - COURT SURFACE SHALL BE PAINTED USING THE PAINT SYSTEM SPECIFIED.



HMA COURT PAVEMENT DETAIL (ALTERNATE)
NOT TO SCALE



PROPOSED WATER FOUNTAIN DETAIL
NOT TO SCALE



Know what's below.
Call before you dig.

PLAN SUBMITTALS AND CHANGES	
BIDDING DOCUMENTS	
DATE	DESCRIPTION
12/20/2024	ISSUED FOR BIDS
11/20/2025	ADDENDUM #1

PREPARED FOR

ANN ARBOR PARKS & RECREATION
DEXTER COURT & PAVILION
ANN ARBOR, WASHTENAW COUNTY, MICHIGAN
DETAIL SHEET

REV:

SHT# 5 OF 12
JOB No: 2300405

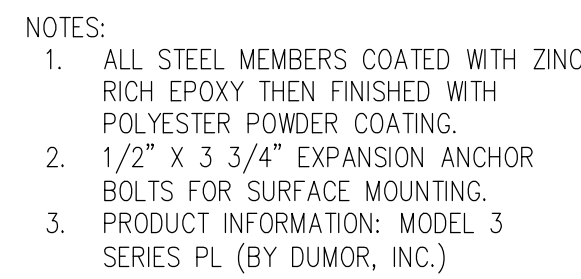
ROWE PROFESSIONAL
SERVICES COMPANY



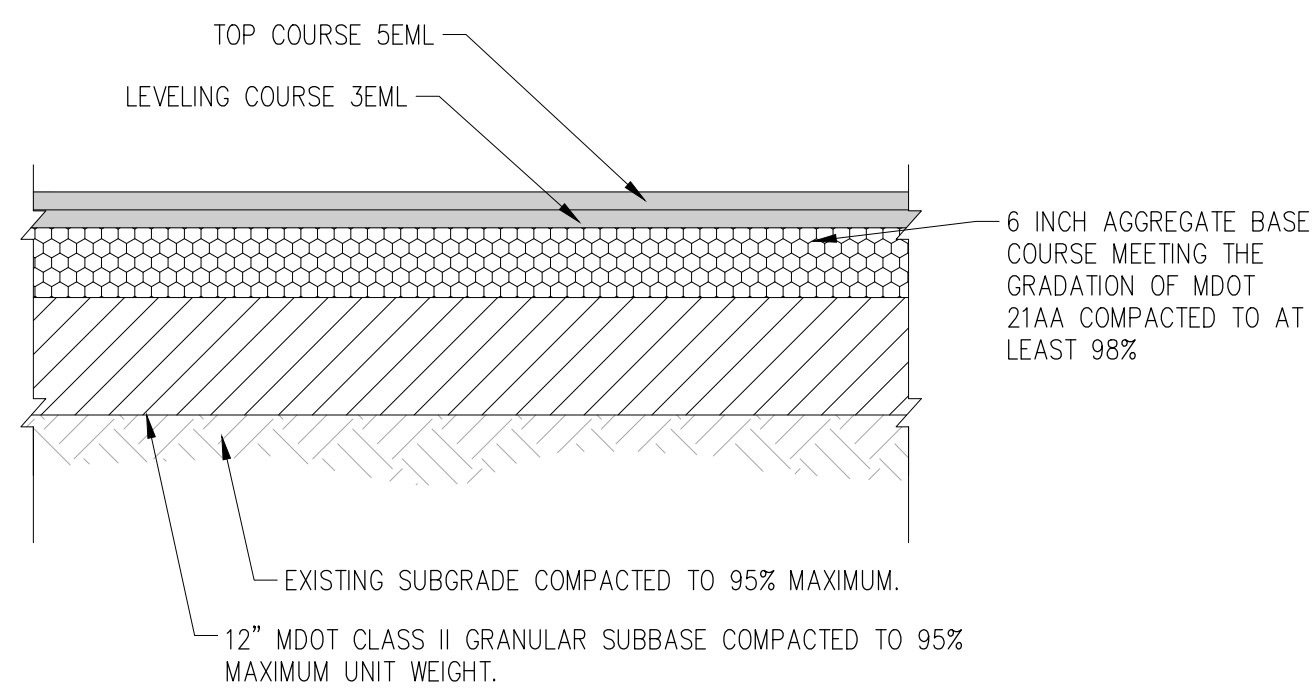
The Rowe Building
540 S. Saginaw St., Suite 200
Flint, MI 48502

O: (810) 341-7500
F: (810) 341-7573
www.rowepsc.com

PLAN DATE: SEPTEMBER 2025
PROJECT MGR: DRS
REVIEWER: AJW
SCALE: NOT TO SCALE



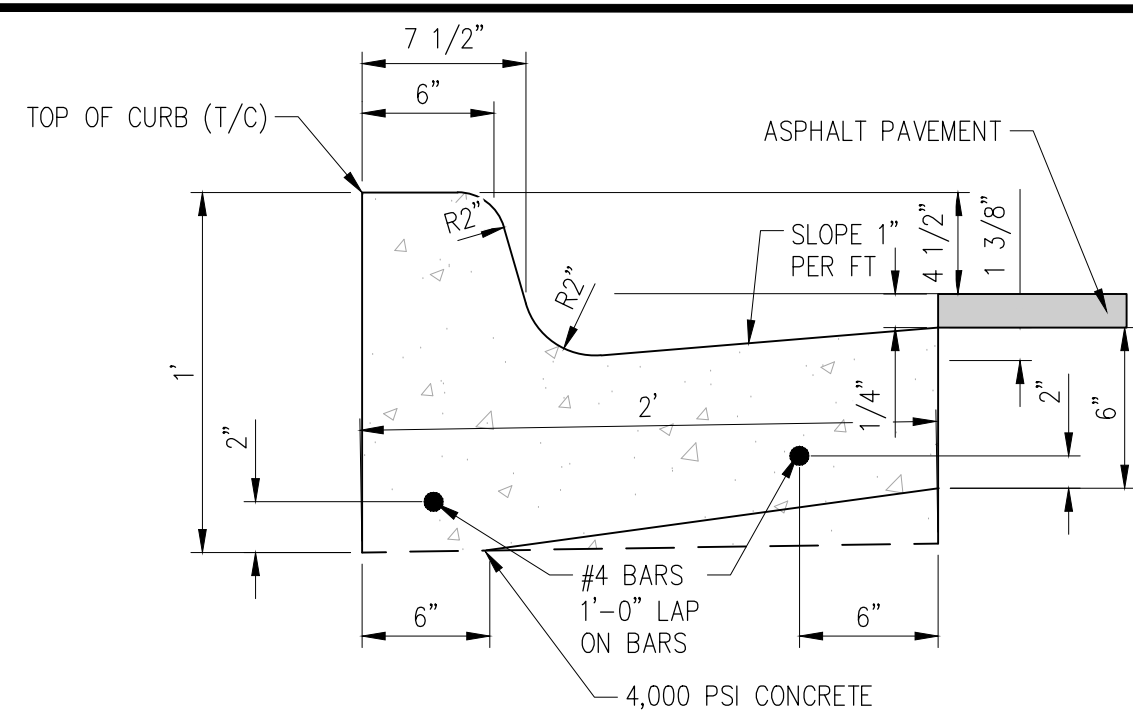
BENCH DETAIL
NOT TO SCALE



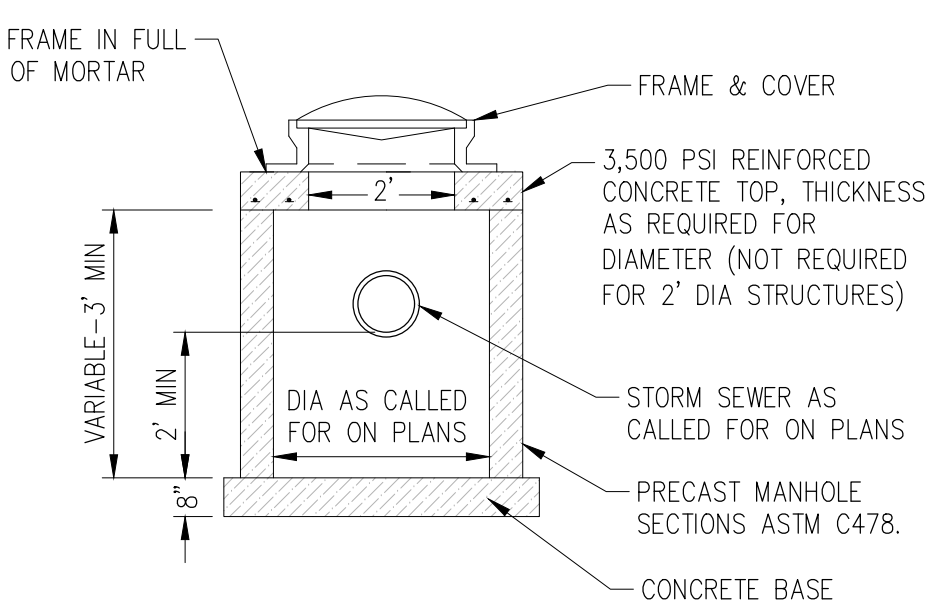
HMA APPLICATION CHART (PAVEMENT REPLACEMENT)

HMA PAVEMENT	RATE PER SYD	THICKNESS	PERFORMANCE GRADE	REMARKS
5EML (TOP)	220 LBS/SYD	2"	58-28	TIER 1 RAP IS ALLOWED
3EML (LEVELING)	330 LBS/SYD	3"	58-28	RAP SHALL BE LIMITED TO TIER 1 DESIGN (17% MAX RAP BY BINDER WEIGHT)
BOND COAT 0.05 TO 0.15 GAL/SYD				
AGG. WEAR INDEX (AWI) SHALL BE 200 MIN FOR MAINLINE TOP COURSE				

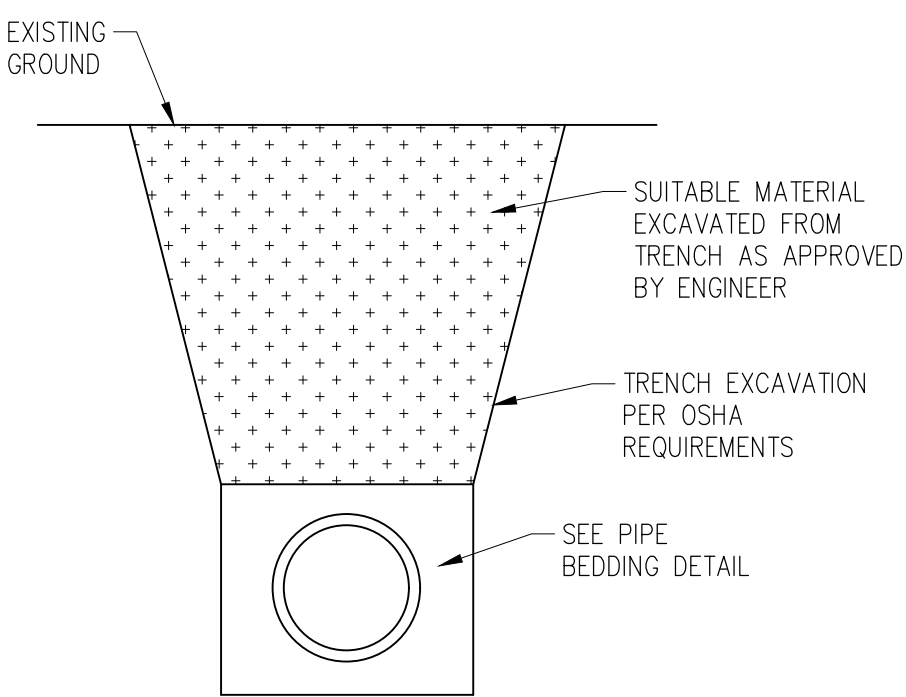
HMA ROAD PATCH REPLACEMENT
NOT TO SCALE



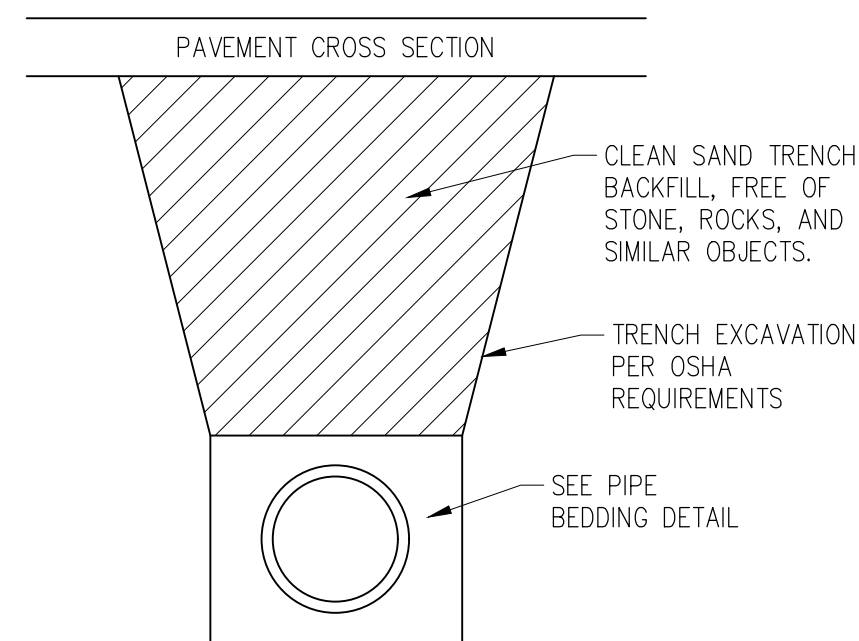
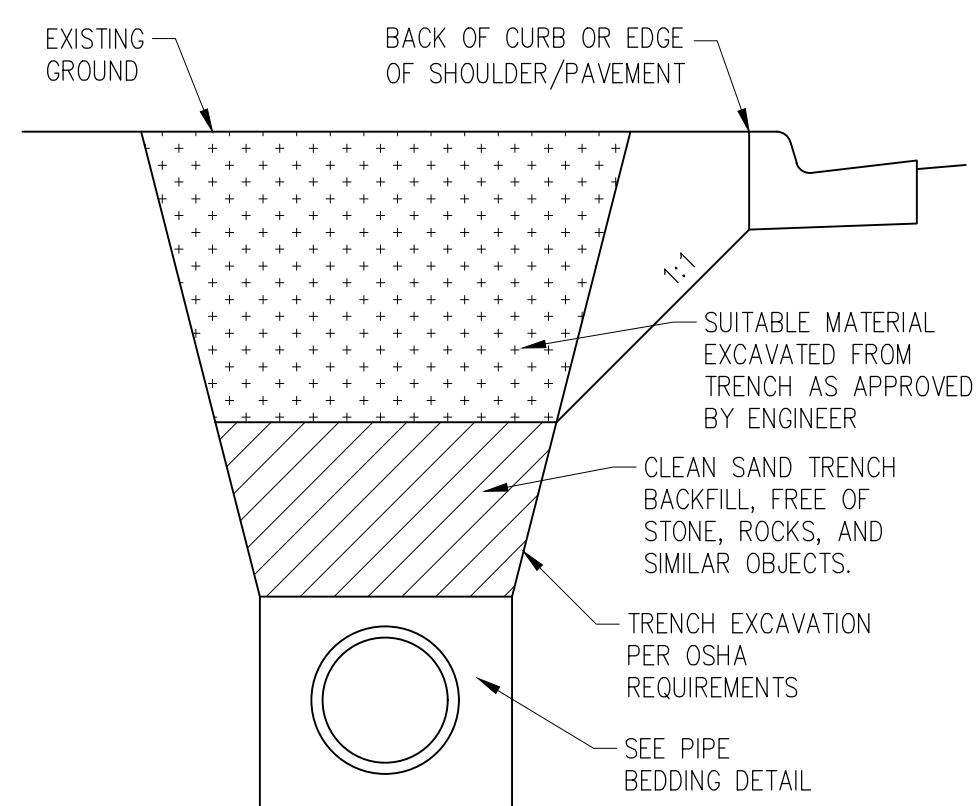
CITY OF ANN ARBOR (SD-R-1)
CURB & GUTTER DETAIL
NOT TO SCALE



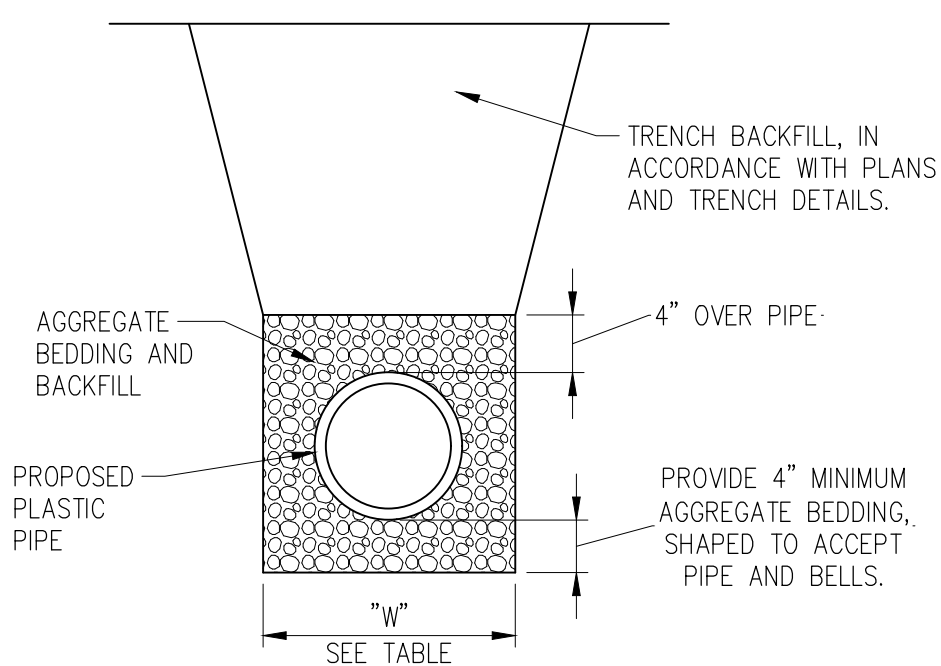
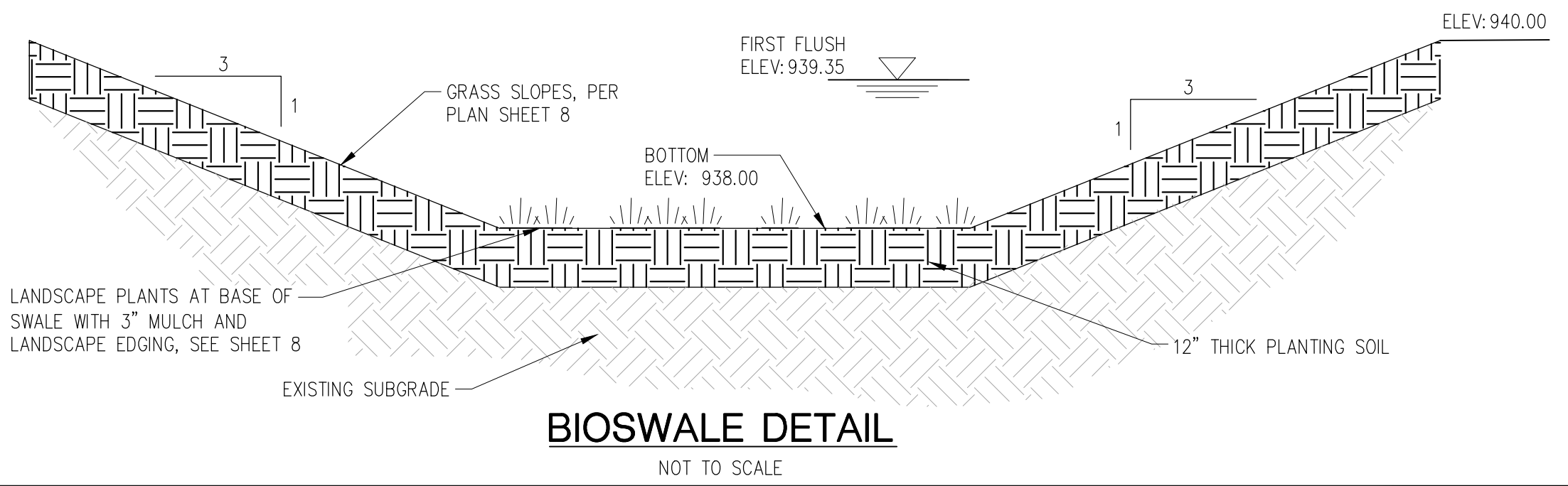
LOW COVERAGE (FLAT TOP)
STRUCTURE DETAIL
NOT TO SCALE



TRENCH DETAIL A
BACKFILL DETAIL
NOT TO SCALE

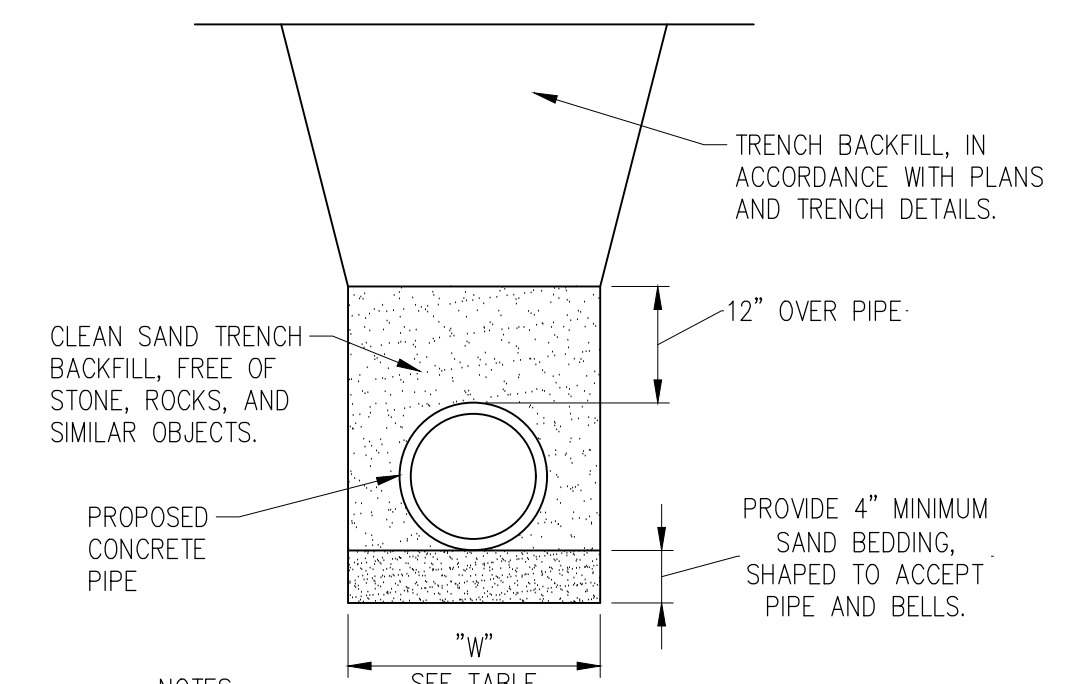


TRENCH DETAIL B
BACKFILL DETAIL

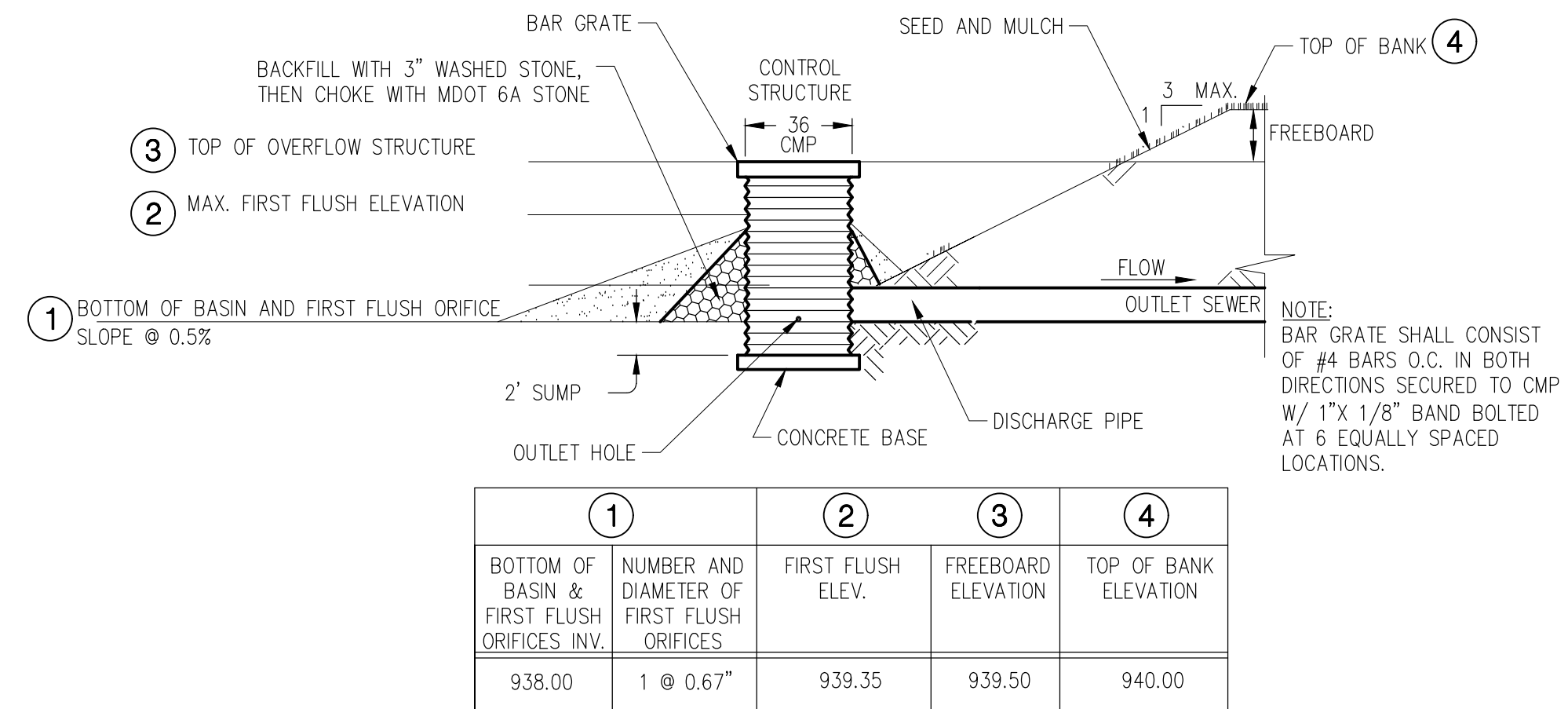


FLEXIBLE GRAVITY PIPE AGGREGATE BEDDING DETAIL

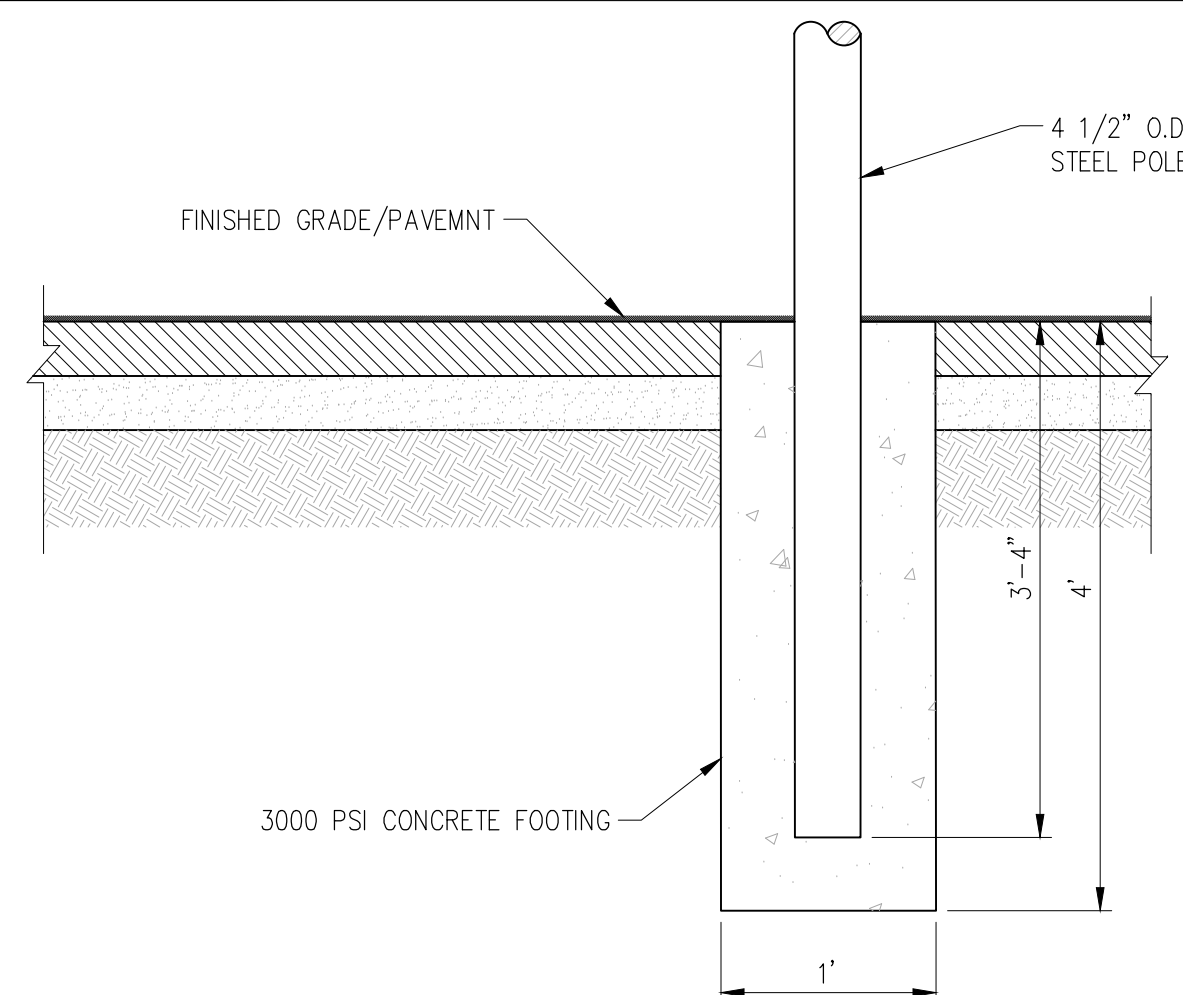
NOT TO SCALE



RIGID GRAVITY PIPE SAND BEDDING DETAIL NOT TO SCALE



OUTLET CONTROL STRUCTURE AND BIOSWALE



BASKETBALL COURT POST FOUNDATION
NOT TO SCALE



Know what's **below**.
Call before you dig.

PLAN SUBMITTALS AND CHANGES	
BIDDING DOCUMENTS	
DATE	DESCRIPTION
12/20/2024	ISSUED FOR BIDS

PREPARED FOR

ANN ARBOR PARKS & RECREATION
DEXTER COURT & PAVILION
ANN ARBOR, WASHTENAW COUNTY, MICHIGAN
DETAIL SHEET

PROFESSIONAL SERVICES COMPANY

The Rowe Building
540 S. Saginaw St., Suite 200
Flint, MI 48502

O: (810) 341-7500
F: (810) 341-7573
www.rowepsc.com

PLAN DATE: SEPTEMBER 2025
PROJECT MGR.: DRS
REVIEWER: AJW
SCALE: NOT TO SCALE