

# Parks Maintenance and Capital Improvements Millage Renewal

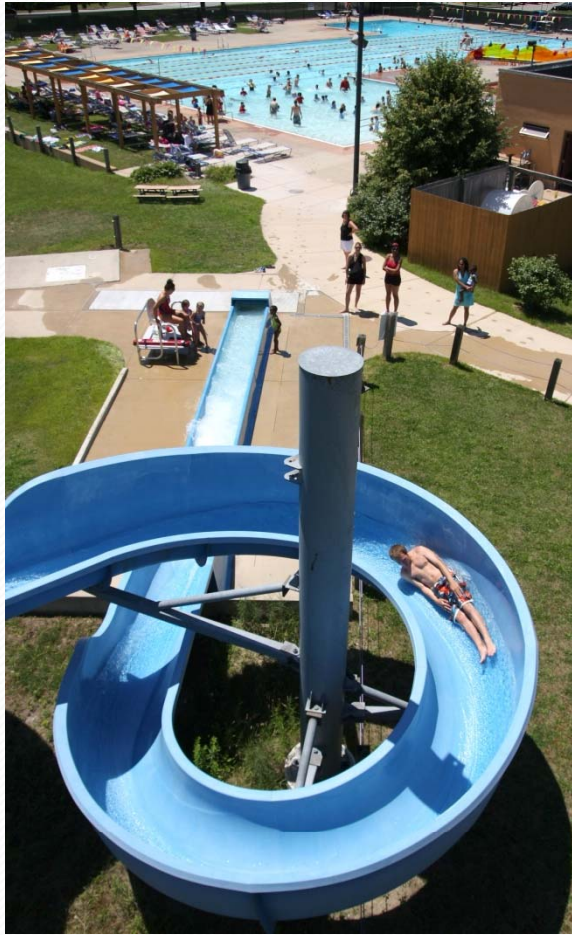
Ann Arbor City Council Work Session  
March 12, 2012

# Presentation Overview

- Goal of work session
- Millage background
- Parks funding
- Examples of millage usage
- Millage renewal process
- Next steps



# Millage Background



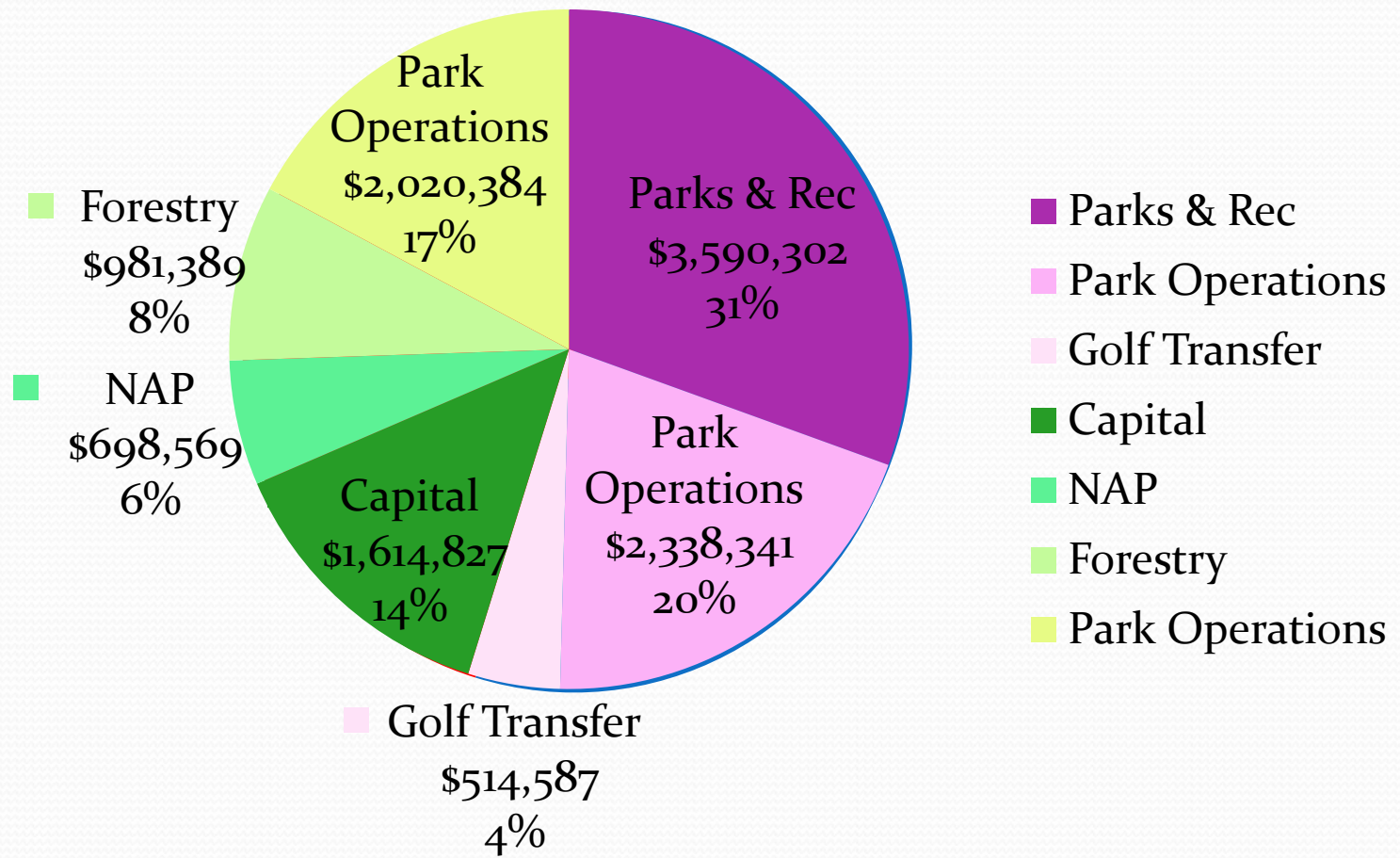
- History of prior millages
- Current parks millage administration
- City Council policies for administration

# Current Parks Funding

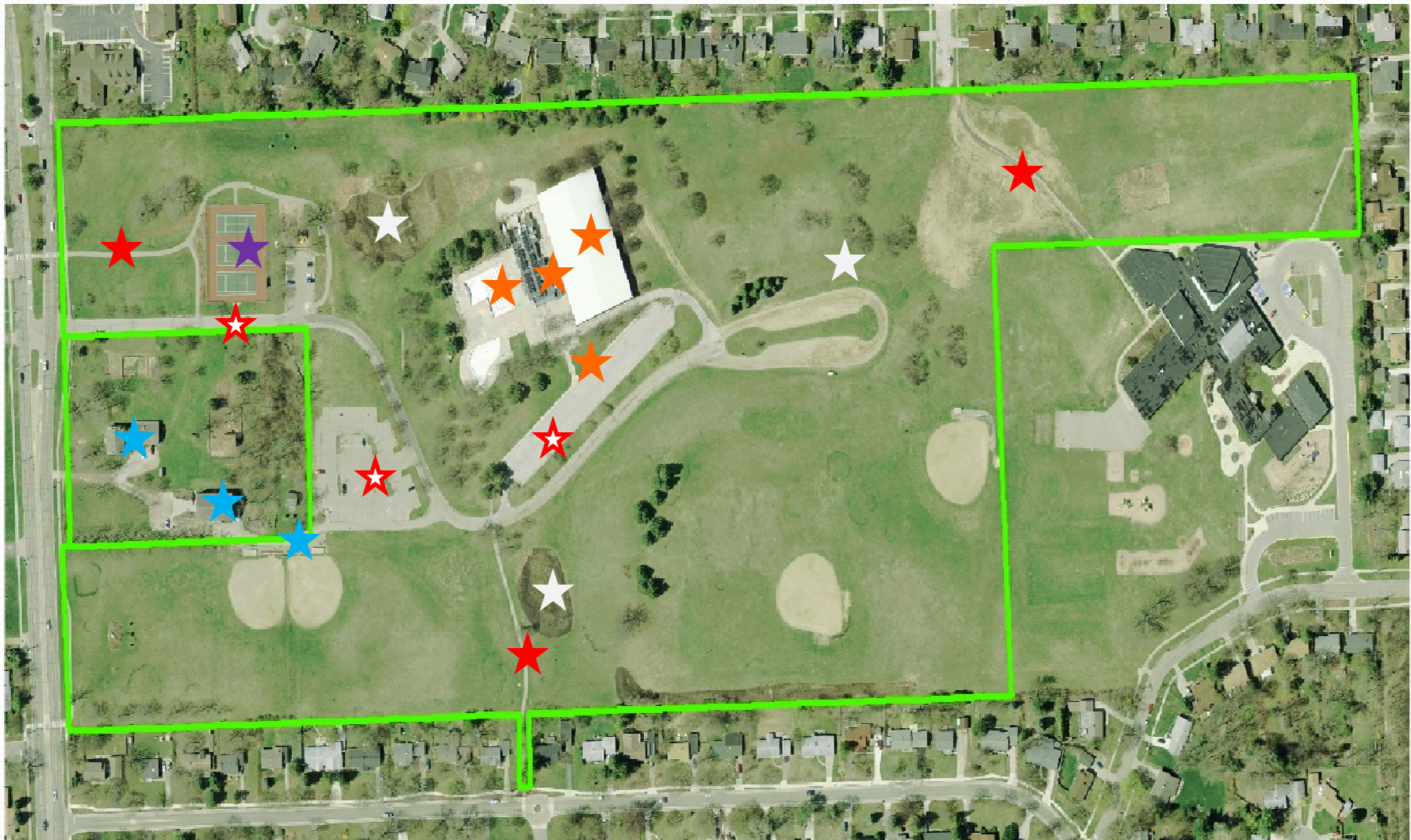
- Primary Funding Sources
- General Fund
  - Mowing, snow removal
  - Utility cost
  - Daily operations of General Fund recreation facilities
- Parks Maintenance and Capital Improvements Millage
  - Capital and park planning
  - Forestry
  - NAP
  - Operational maintenance



## Parks Expenditure Budget General Fund and Millage FY 2012



# Example of Millage Uses



# Millage Renewal Process



- Working Group
- Reviewed and evaluated existing Millage and policies

# Working Group Recommendation

- Renewal - Status Quo – why?
  - Sufficient funding
  - “It works”





# Millage Revenue

- Existing millage – averages \$5,056,756 annually over the past five years
- Millage renewal
- Restore to 1.10 mills – approximate revenue - \$4,990,543 based on 2012 Estimated Taxable Value
- Cost to home owner using median home value of \$213k? \$117 annually



# Next Steps



- Develop informational materials
- Public Engagement
  - PAC March 19
  - 4 PAC Public Outreach meetings in April
  - Additional PAC meetings and public hearing
  - August – Council action on ballot language

# Questions and Comments?

