

COPY

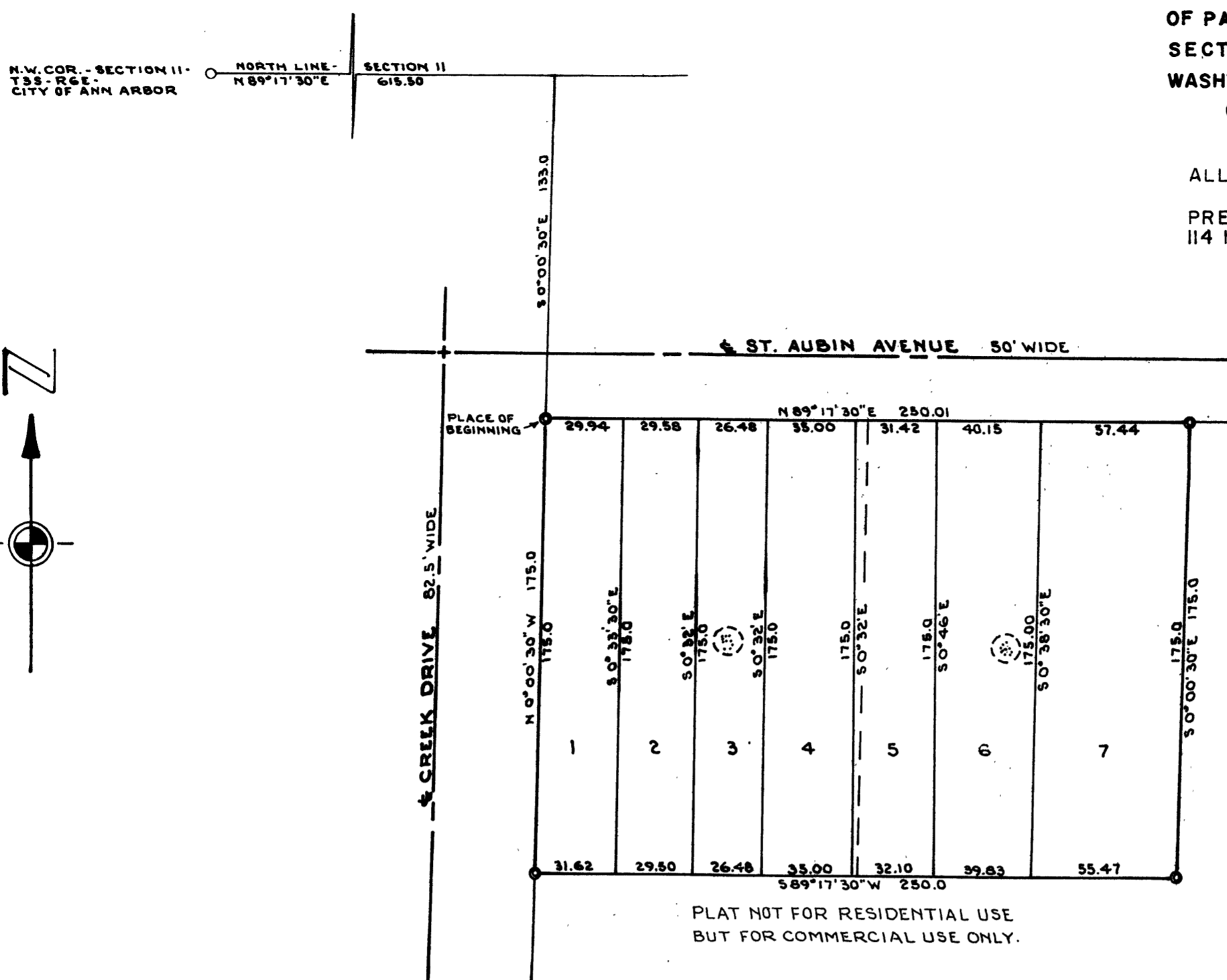
# HEWITT REPLAT

OF LOTS 5 AND 6 OF WAGNER - MCCOMB  
BOULEVARD GARDENS, BEING A SUBDIVISION  
OF PART OF THE NW 1/4 OF THE NW 1/4 OF  
SECTION 11, T3S, R6E, CITY OF ANN ARBOR,  
WASHTENAW COUNTY, MICHIGAN.



SCALE 1" = 50'  
ALL DIMENSIONS IN FEET AND DECIMALS THEREOF.

PREPARED AND DRAFTED BY ATWELL-HICKS, INC.  
114 NORTH FIRST STREET, ANN ARBOR, MICHIGAN.



COPY  
Register's Office  
Washtenaw County, S. S.  
Plat of Hewitt Replat  
City of Ann Arbor  
was Recorded this 27th day of  
July A. D., 1966 at 3:30 o'clock  
P. M. in Liber 18 of Plat  
on Page 12  
Patricia Newkirk Hardy  
Register of Deeds  
ORIGINAL FILED

I hereby certify this copy is a true copy of map  
or plat forwarded the Register of Deeds for  
recording.  
Date July 26, 1966  
FILED IN DEPT. OF TREASURY  
Date August 12, 1966  
EXAMINED AND APPROVED  
Date July 26, 1966  
Allison Green  
ALLISON GREEN  
STATE TREASURER  
By Richard E. Lomas  
Richard E. Lomas - Plat Examiner

PLAT NOT FOR RESIDENTIAL USE  
BUT FOR COMMERCIAL USE ONLY.

### DEDICATION

### DESCRIPTION OF LAND PLATTED

### CERTIFICATE OF MUNICIPAL APPROVAL

KNOW ALL MEN BY THESE PRESENTS, that we Louis E. McKush a single man, Gerritt W. deVries and Peggy J. deVries his wife, Edward G. Hewitt and Carolyn A. Hewitt his wife, N.B. Kelsay and Agnes Ruth Kelsay his wife, Myron E. VanElls and May E. VanElls his wife, Pauline C. Fife and Bessie M. Hochrein as proprietors, have caused the land embraced in the annexed plat to be surveyed, laid out and platted to be known as HEWITT REPLAT of Lots 5 and 6 of Wagner-McComb Boulevard Gardens, being a subdivision of part of the NW 1/4 of the NW 1/4 of Section 11, T3S, R6E, City of Ann Arbor, Washtenaw County, Michigan

The land embraced in the annexed plat of HEWITT REPLAT of Lots 5 and 6 of Wagner-McComb Boulevard Gardens, being a subdivision of part of the NW 1/4 of the NW 1/4 of Section 11, T3S, R6E, City of Ann Arbor, Washtenaw County, Michigan, is described as follows:  
Commencing at the NW corner of Section 11, T3S, R6E, City of Ann Arbor, Washtenaw County, Michigan; thence N 89°-17'-30" E 615.50 feet along the north line of said section; thence S 0°-00'-30" E 133.0 feet to the NW corner of Lot 5 of Wagner-McComb Boulevard Gardens Subdivision for a PLACE OF BEGINNING; thence N 89°-17'-30" E 250.01 feet along the south line of St Aubin Avenue; thence S 0°-00'-30" E 175.0 feet; thence S 89°-17'-30" W 250.0 feet; thence N 0°-00'-30" W 175.0 feet along the east line of Creek Drive (formerly Platt Boulevard) to the Place of Beginning, containing 7 lots numbered 1 through 7 inclusive.

This plat was approved by the Common Council of the City of Ann Arbor at a meeting held February 15, 1966 and is in compliance with Section 19a and that the width of lots conforms with requirements of Section 30, Act 172, of 1929, as amended.

John P. Bentley  
JOHN P. BENTLEY  
City Clerk

Signed in the  
Presence of:

Eugene V. Douvan  
Eugene V. Douvan Witness  
Sheila S. Schnur  
Sheila S. Schnur Witness

Louis E. McKush  
Louis E. McKush  
3110 Packard Road  
Ann Arbor, Michigan

Gerritt W. deVries  
Gerritt W. deVries  
2709 Hampshire  
Ann Arbor, Michigan

Peggy J. deVries  
Peggy J. deVries  
2709 Hampshire  
Ann Arbor, Michigan

Edward G. Hewitt  
Edward G. Hewitt  
1823 Willis Road  
Saline, Michigan

Carolyn A. Hewitt  
Carolyn A. Hewitt  
1823 Willis Road  
Saline, Michigan

N.B. Kelsay  
N. B. Kelsay  
2672 Easy Street  
Ann Arbor, Michigan

Agnes Ruth Kelsay  
Agnes Ruth Kelsay  
2672 Easy Street  
Ann Arbor, Michigan

Myron E. VanElls  
Myron E. VanElls  
312 S. Glendale Drive  
Ann Arbor, Michigan

May E. VanElls  
May E. VanElls  
312 S. Glendale Drive  
Ann Arbor, Michigan

Pauline C. Fife  
Pauline C. Fife  
2153 Steven Terrace  
Ann Arbor, Michigan

Bessie M. Hochrein  
Bessie M. Hochrein  
2153 Steven Terrace  
Ann Arbor, Michigan

### ACKNOWLEDGMENT

STATE OF MICHIGAN )  
County of Washtenaw ) ss.

On this 5th day of August A. D., 1966, before me, a Notary Public in and for said county, personally came the above named Louis E. McKush a single man, Gerritt W. deVries and Peggy J. deVries his wife, Edward G. Hewitt and Carolyn A. Hewitt his wife, N.B. Kelsay and Agnes Ruth Kelsay his wife, Myron E. VanElls and May E. VanElls his wife, Pauline C. Fife and Bessie M. Hochrein known to me to be the persons who executed the above dedication, and acknowledged the same to be their free act and deed.

Sheila S. Schnur  
Sheila S. Schnur  
Notary Public, Washtenaw County, Michigan  
My Commission expires 5-8-69

### CERTIFICATE OF APPROVAL BY THE CITY PLANNING COMMISSION

This plat was approved by the Planning Commission of the City of Ann Arbor, Michigan at a meeting held on the 8th day of February, 1966.

John G. Spelman Jr.  
JOHN G. SPELMAN JR., Chairman  
Richard W. Lavelly  
Richard W. Lavelly, Vice-Chairman  
Keith F. Weiland  
KEITH F. WEILAND, Secretary

### COUNTY TREASURER'S CERTIFICATE

I hereby certify, that there are no tax liens or titles held by the State on the lands described hereon, and that there are no tax liens or titles held by individuals on said lands for the five years preceding the 10th day of March, 1966, and that the taxes for said period of five years are all paid, as shown by the records of this office.

Sylvester A. Leonard  
Sylvester A. Leonard,  
County Treasurer

### APPROVAL BY COUNTY PLAT BOARD

This plat was approved on the 26th day of May, 1966 by the Washtenaw County Plat Board.

Patricia Newkirk Hardy  
Patricia Newkirk Hardy  
County Register of Deeds  
John H. Flook  
John H. Flook  
County Drain Commissioner  
J. Martin Rempp  
J. Martin Rempp  
Auditor  
Herbert G. Loeffler  
Herbert G. Loeffler  
Auditor

John P. Cook  
John P. Cook  
Auditor

### SURVEYOR'S CERTIFICATE

I hereby certify that the plat hereon delineated is a correct one and that permanent metal monuments consisting of iron rods at least one half inch in diameter and thirty-six inches in length encased in concrete cylinder at least four inches in diameter and thirty-six inches in length have been placed at all points marked thus "©" as thereon shown at all angles in the boundary of the plat, at the intersection of lines of streets, and at the intersection of the lines of streets with the boundaries of the plat as shown on said plat.

Prepared By: Robert J. Jagow  
Robert J. Jagow  
Registered Surveyor No. 6998  
114 N. First Street, Ann Arbor, Michigan