

AIN STREET

(east side, part I) Main Street Historic District

****201-205**

1929

First National Building

Michigan National Bank

20th Century Romanesque

ten

terra cotta

double-hung, one-over-one

round arches, terracotta details, gargoyles





**201-205

*207

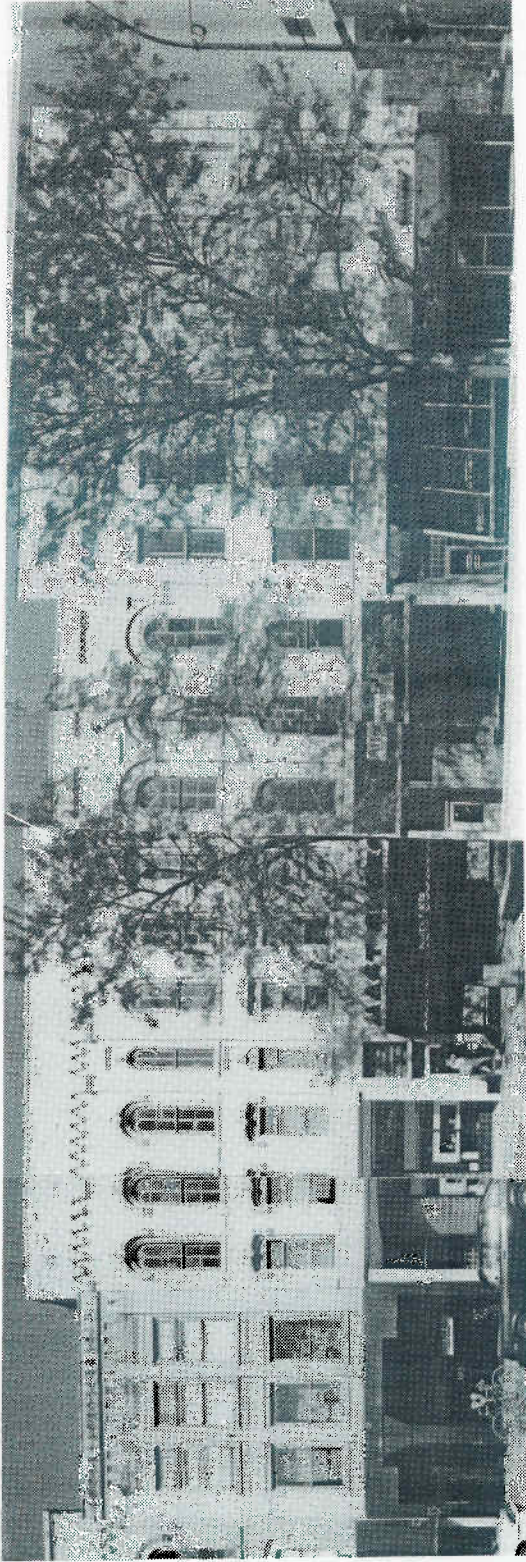
*209

*211

SOUTH MAIN STREET

(east side, part II) Main Street Historic District

1929	1870	1868	1872
First National Building	Martin & Son undertakers	Florian Muehlig undertaker	Florian Muehlig undertaker
First National Building	The Full Moon Cafe	vacant	Ann Arbor Clothing
20th Cent. Romanesque	Italianate	Italianate	Italianate
ten	three	three	three
terracotta	brick	brick	brick
double-hung, one-over-one	double-hung, one-over-one	double-hung, one-over-one	double-hung, one-over-one
round arches, terracotta details, gargoyles	round & segmented arches, pilasters	round & segmented arches, stone trim	round & segmented arches, stone trim



213

*215

*217

*219

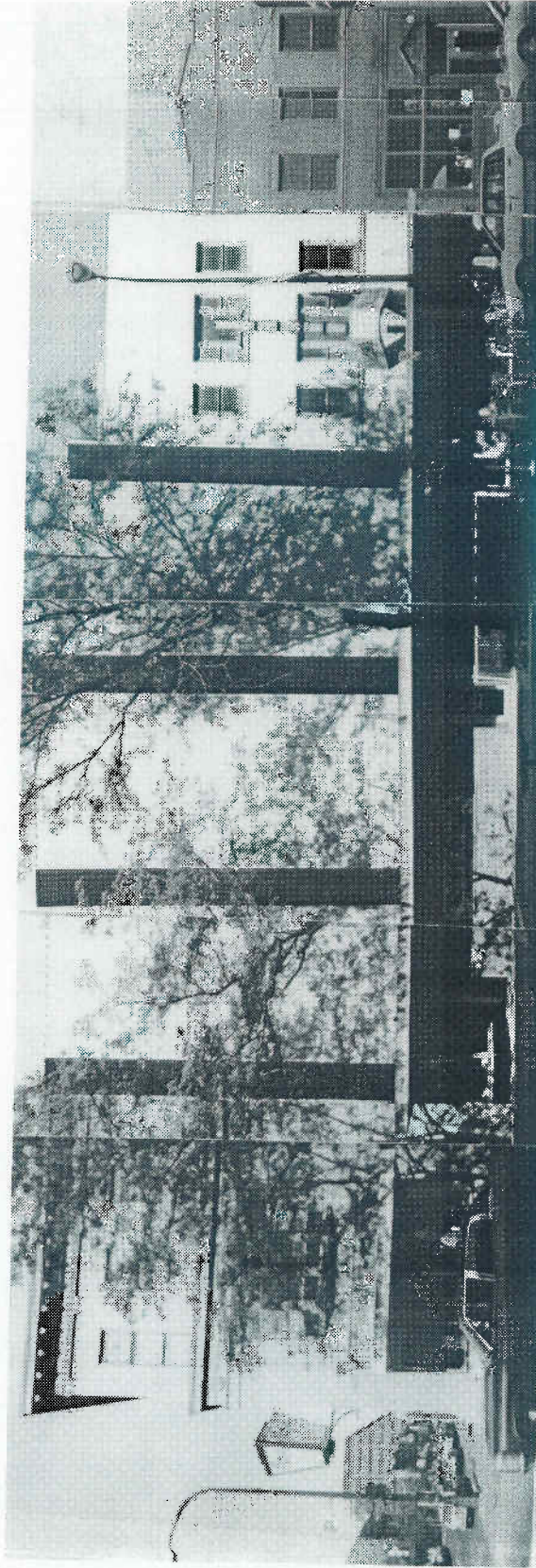
*221

*223

SOUTH MAIN STREET

(east side, part III) Main Street Historic District

59) 1908	1866	Richards & Forbes millinery	1866	Charles Spoor saddles, harness	1869	John Gerner groceries
os. ts	Urban Jewelers	Charles Fantle dry goods	After Words	Goetz & Co. groceries	Beth's Boutique	
c Men	Italianate	Mast's Shoes	Italianate	Downtown Co.	Italianate	
ernacular	three	Italianate	three	Italianate	three	
ung, one-	brick	double-hung, four-over-four	brick	three	brick	
;	double-hung, four-over-four	double-hung, six-over-four	double-hung, one-over-one	double-hung, one-over-one	double-hung, one-over-one	
cornice, brick	round and segmented arches, stone trim	round and segmented arches, stone trim	round arches, stone trim, pilasters	stone sills, brick corbels	stone sills, brick corbels	

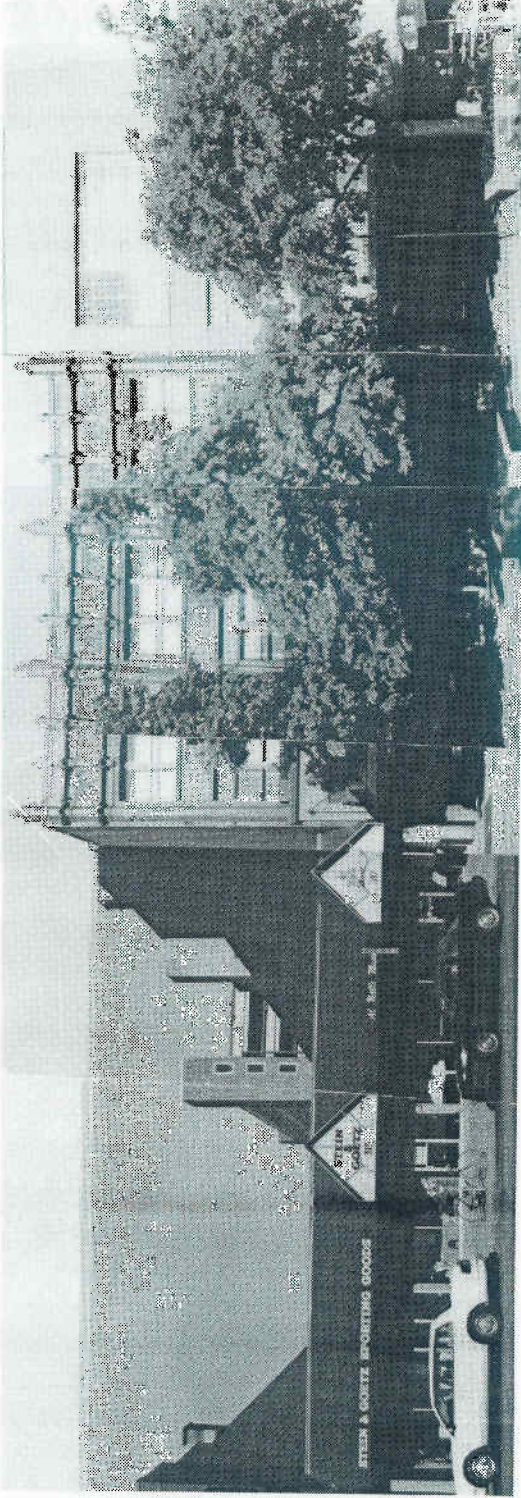


*301 303 305 307 309 311

SOUTH MAIN STREET

(east side, part IV) Main Street Historic District

Year	Address	Year	Address	Year	Address	Year	Address
(1880)	1906	(1880)	1906	(1866)	1916		1930
(J. Baumgartner) /American Savings Bank	German Bank	Henry Binder	J. Laubengayer	Anton Teufel	Fred Gross	Muehlig & Lanphear	hardware
		saloon	meats	harness	clothing		
lutzel's	Lucky Drug's		Manika's Restaurant		vacant	City Grill	
Colonial Revival	Italianate (covered)			Commercial	Commercial	Commercial	
three	three			Vernacular	Vernacular	Vernacular	
brick	brick			three	brick	two	
double-hung, one-over-one, transoms	covered			double-hung, one-over-one	brick	double-hung, one-over-one	
cornices, pilasters, bay window	round & segmented arches			none		stone trim, tapestry brick	



(N)313-317

*319-25

327

SOUTH MAIN STREET

(east side, part V) Main Street Historic District

1943	1925	1902
Stein & Goetz Sporting Goods	Marchese Building	Frank Wilkinson
Stein & Goetz Al Nalli Music	The Active Lady Ayla	stoves, furniture
Modern	Art Deco	Modern
one	three	three
brick	brick, terracotta	brick
fixed, single pane	double-hung, one-over-one	fixed, single pane
none	terracotta, tapestry brick, upper and lower cornices	none
		Wilkinson Luggage Shop



332

330

328

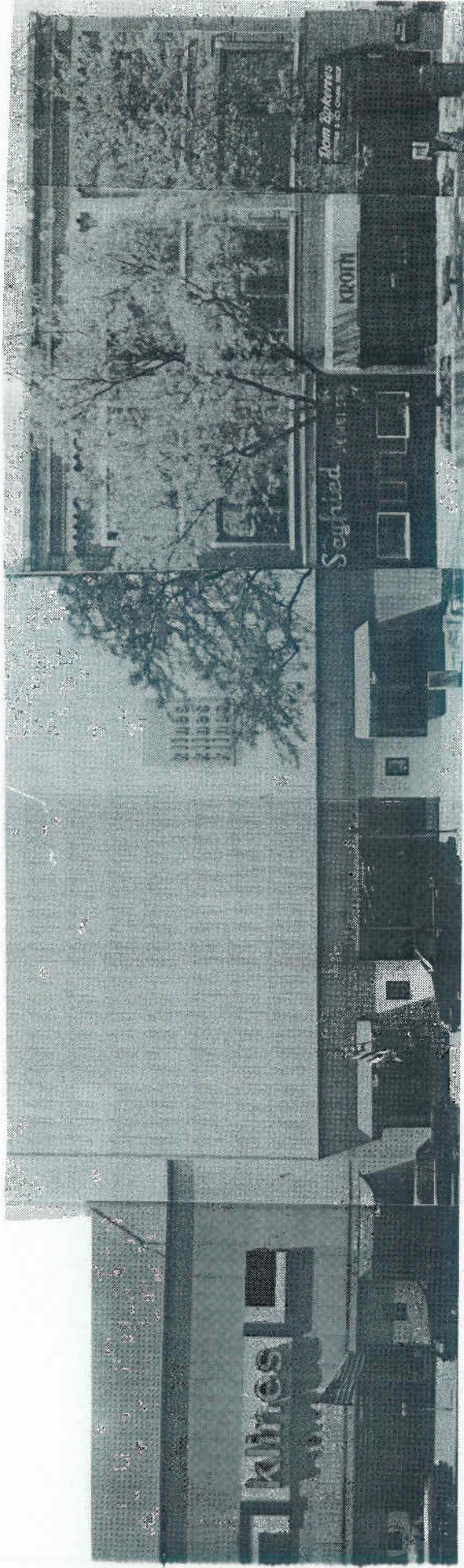
326

318-24

SOUTH MAIN STREET

(west side, part I) Main Street Historic District

Year	Address	Owner/Use	Year	Address	Owner/Use	Year	Address	Owner/Use
1940	332	Joe's Snappy Service	1916	318-24	J.F. Wuerth & Company Clothing			
	330	P. Willard residence	1911	326	Orpheum Theater			
	330	C & M Cosgrove mill'ry, atty						
	328	vacant			Gratzi's			Prisms II, Fiegle's
	328	Commercial Vernacular			Commercial Vernacular			Commercial Vernacular (covered)
	328	two-and-a-half			three			three
	328	brick			brick			brick
	328	double-hung, one-over-one			fixed			covered
	328	dormer, bay window, cornice			tapestry large arch			unknown
	328	stone trim			brick,			



312-16

306-10

304

302

300

SOUTH MAIN STREET

(west side, part II)

Main Street Historic District

1941

rs Roebuck & Co.

1896

Crescent Works Corset Factory

1881

J. Keck & Son, Furniture

ne's

Kline's

Seyfried
Jewelers

Kroth

Dom

Bakeries

ern

Commercial Vernacular (covered)

Italianate (remodeled 1910 & 1976)

three

three

ered

brick (covered)

brick

ered

covered

fixed, single pane

a

terracotta details

tapestry brick



226

222

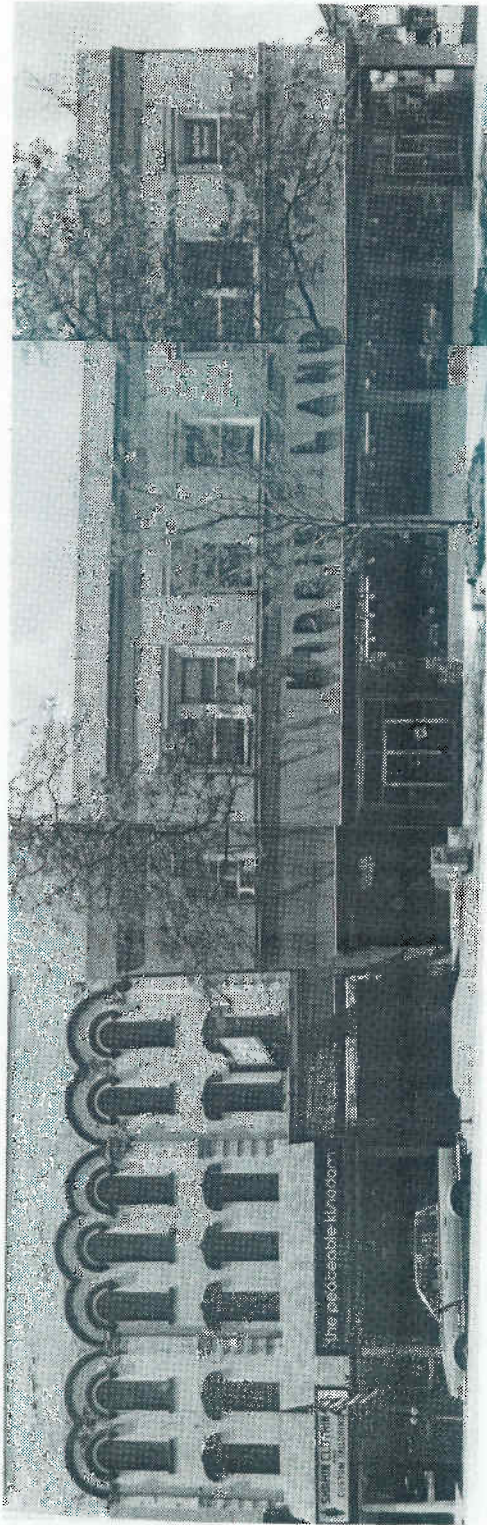
220

214-218

SOUTH MAIN STREET

(west side, part III) Main Street Historic District

	1939	1900	1949
Cunningham's Drugs	Cunningham's	Arnold Jewelers	F. W. Woolworth Co.
Parthenon	Graphic Art	The Academy	vacant
Art Moderne	Commercial Vernacular	Commercial Vernacular	Art Moderne
one	one	three	two
porcelain enamel panels	porcelain enamel panels	brick	brick
fixed	none	double-hung, one-over-one, transoms	hopper
chrome bands, concave panels	none	tapestry brick	tapestry brick in vertical panels

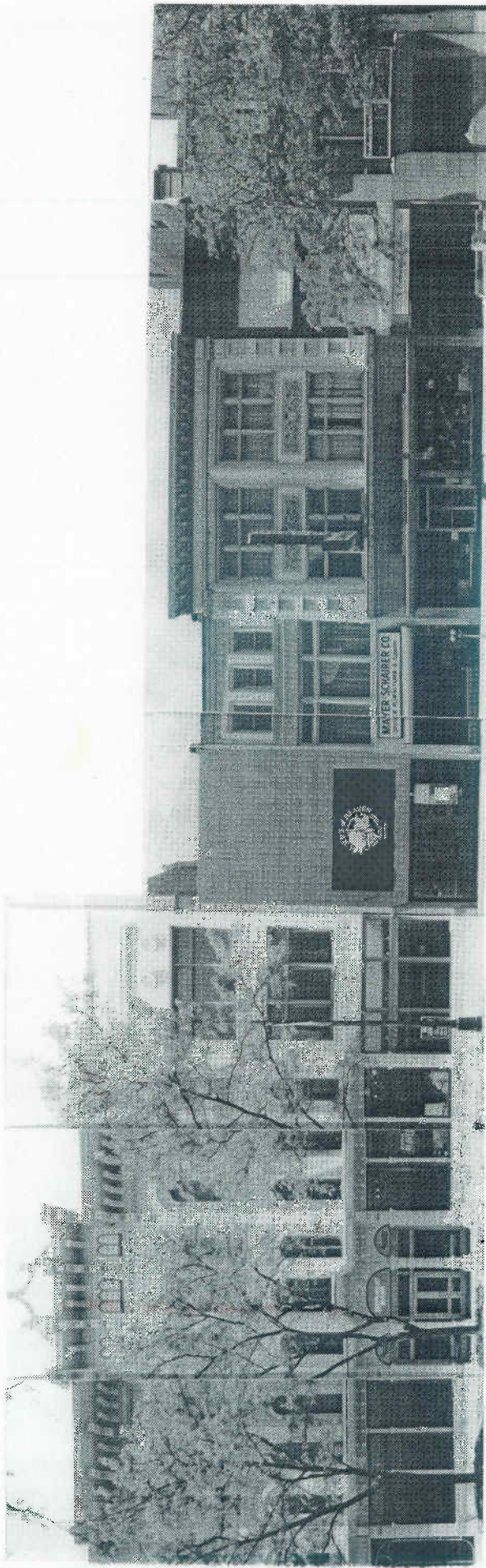


*212 *210 *208 200

SOUTH MAIN STREET

(west side, part IV) Main Street Historic District

1860	1860	1860	1926
Reinhardt & shoes	George Lutz saloon	Paul Christman stoves	S. S. Kresge Co.
in Clothing	Peaceable Kingdom	Schlanderer	Kiddie Land
ianate	Italianate	Italianate	Commercial Vernacular
	three	three	two
	brick	brick	brick
le-hung, -over-four	double-hung, four-over-one	double-hung, two-over-two	double-hung, one-over-one
l, segmented	stone trim,	pilasters	brick cornice, tapestry brick



**120-124

**118

116

114

*112-10

108

106

SOUTH MAIN STREET

(west side, part V) Main Street Historic District

1866	1911	(1899)	b.1908	1908	1915	1908
First National Bank	Mills Co.	M. Shaller books	Hutzel & Co. drugs	Eberbach & Sons, drugs	Wahr's Shoes	W. Goodyear dry goods
Republic Bank Boersma Travel	vacant	A Slice of Heaven	vacant	Mayer-Schairer Co.	A.G. Edwards	Trustcorp
Italianate	Commercial Vernacular	modern	Commercial Vernacular	Commercial Vernacular	Commercial Vernacular	Beaux-Arts
three	three	three	three	three	three	three
brick	brick	covered	brick	brick	brick	stone
double-hung, two-over-two	fixed, single pane	covered	double-hung, one-over-one	double-hung, transom	filled in	double-hung, one-over-one
cornice, arches, pilasters, stone trim	tapestry brick	none	tapestry brick	cornice, terra-cotta	none	cornice, stone trim

* * 100

MAIN STREET

(west side, part VI) Main Street Historic District

1906

Glazier Building

Trustcorp

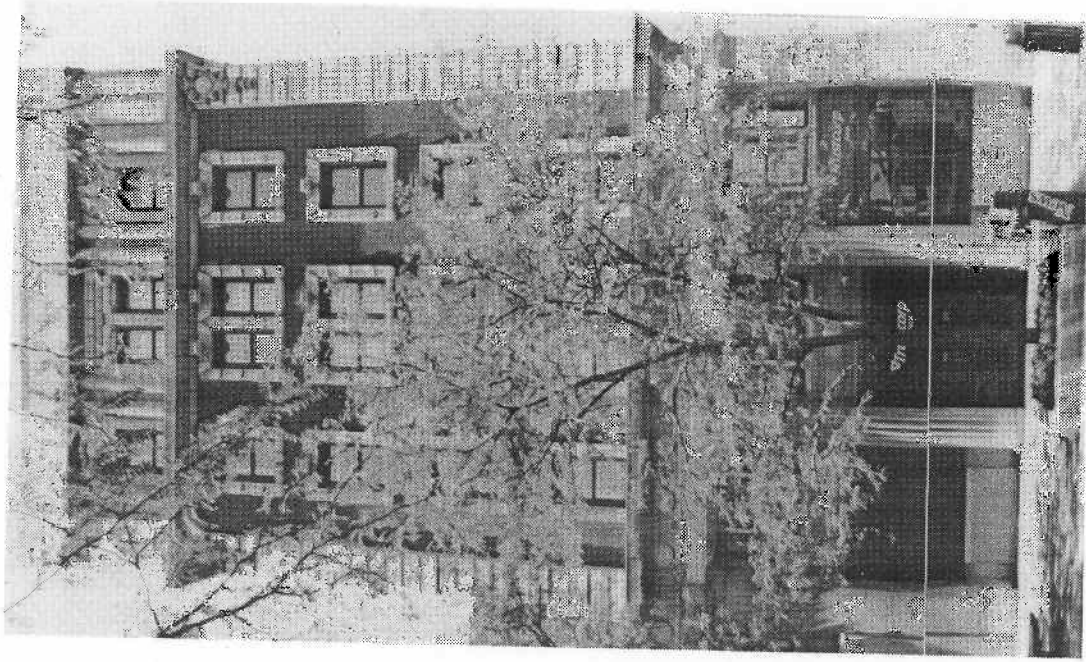
Beaux-Arts

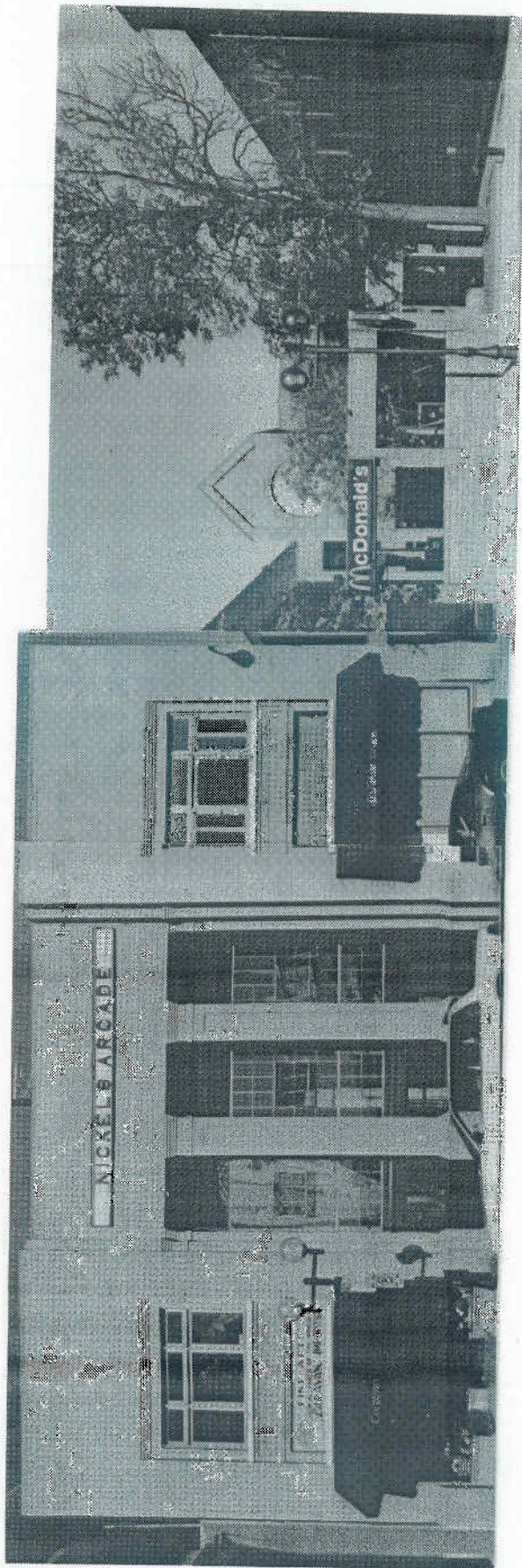
seven

stone, brick

double-hung, one-over-one

elaborate lower cornice, stone escutcheons, quoins, and window trim, fluted columns





**317-325

(N)331

MAYNARD STREET

(east side, part I) State Street Historic District

1916

Nickel's Arcade

Nickel's Arcade

Beaux-Arts

three

blond brick

double-hung transom

"Nickels Arcade" across facade

1974

McDonald's

McDonald's

Modern

two

brick

fixed, single
pane

tapestry brick



345

347

MAYNARD STREET

(east side, part II) State Street Historic District

1915

1915

University Music House

Student Shoe Repair Patricia Miles

Commercial
Vernacular

two

brick

double-hung,
one-over-one

brick cornice,
stone trim

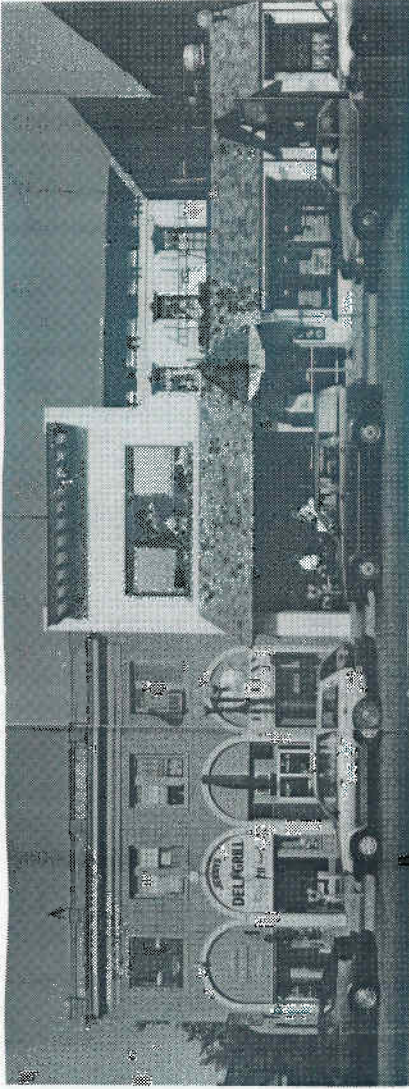
Commercial Vernacular

two

brick

double-hung, one-over-one

brick cornice, stone trim



209-211

213-15

217

SOUTH STATE STREET

(east side, part I) State Street Historic District

1916

Chubb House
boarding

Beatnix; Jerry's Deli &
Grill; Regency Travel,
Inc.; Lake's; The Roxy

Commercial Vernacular

two

brick

double-hung, six-over-
six

stone cornice & sills

1915

Foster Art
Goods

Jason's,
Donburi

Prairie

two

stucco

fixed, single
panes

wood cornice,
colored glass

1872/1939 add.

Benjamin Brown
residence

Paris Paris

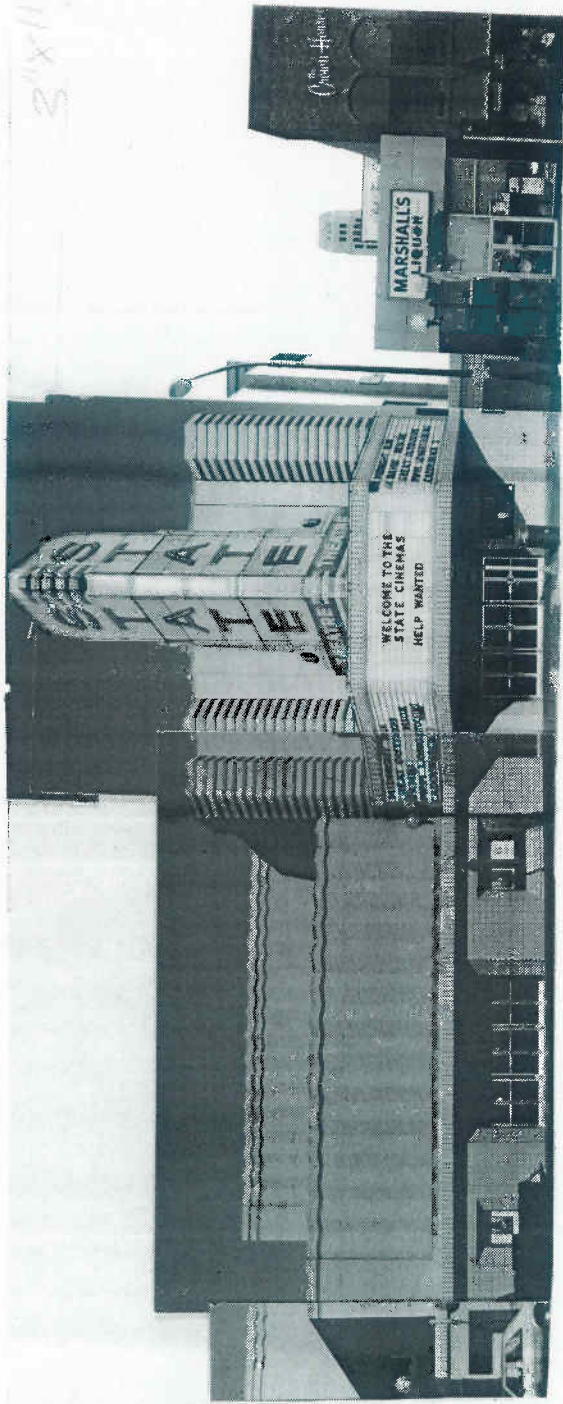
Italianate/Tudor add.

two/one

brick/stucco with stone accents

double-hung, four-over-four

brackets, frieze windows with hoods/
slate roof, half-timbered gables



*231

(N)235

SOUTH STATE STREET

(east side, part II)

State Street Historic District

1941

State Street Theater

State Street Theater

Art Deco

two

brick

fixed, single panes

Art Deco brick banding, Art Deco metal marquis

1929

Haller's Jewellery

Marshall's Liquor

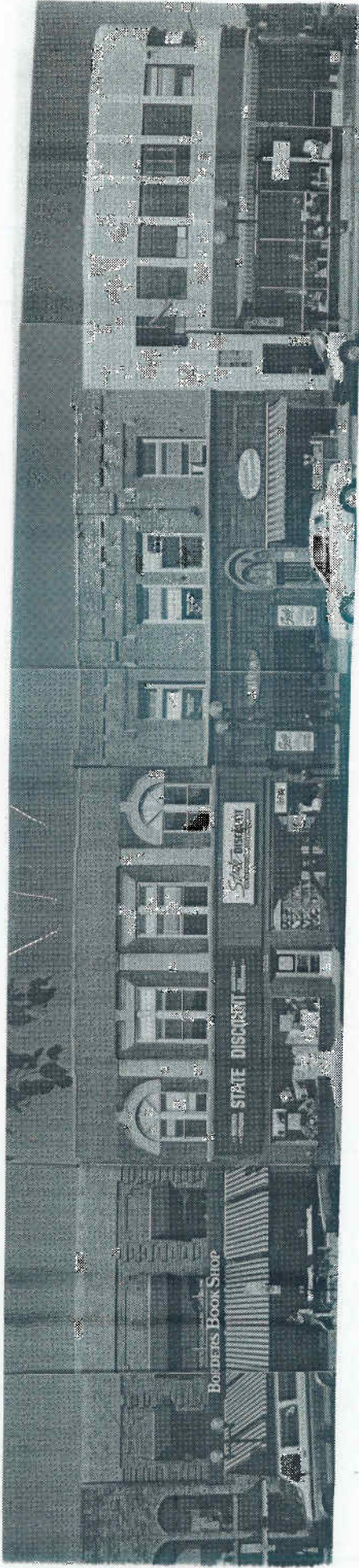
Modern

one

brick

fixed, single panes

none

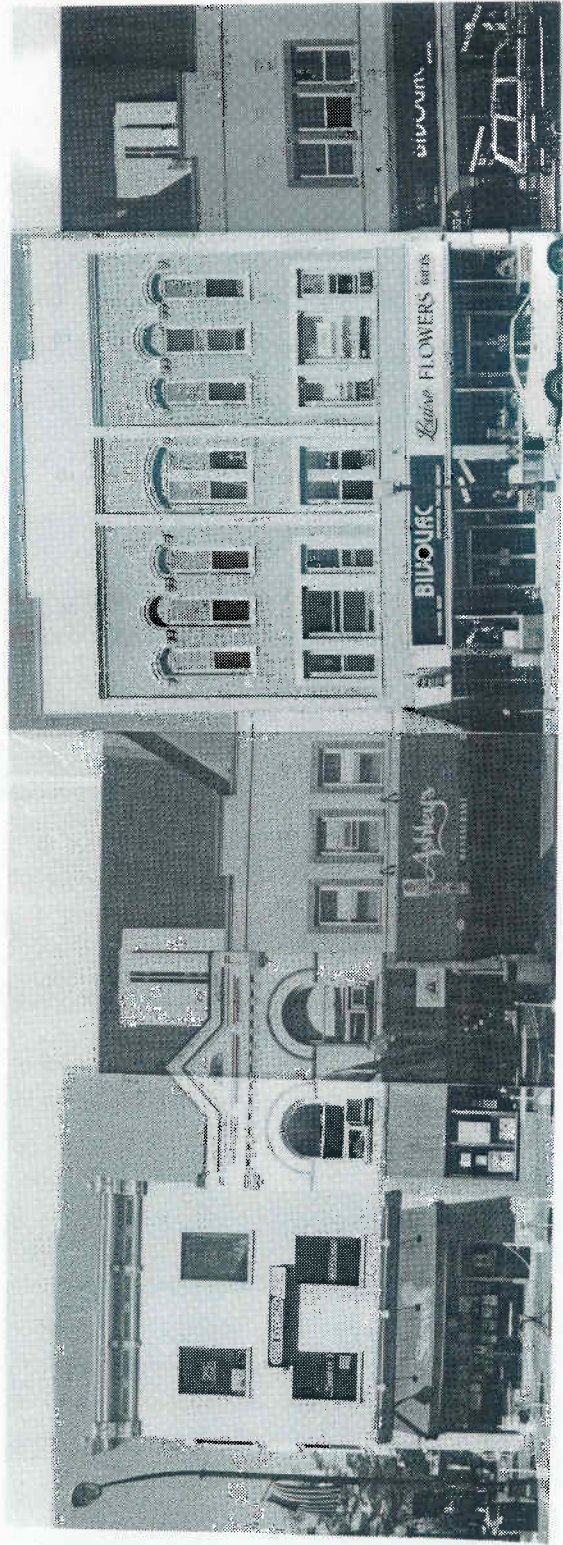


11 303-305 307 309 311 315 317

UTH STATE STREET

(east side, part III) State Street Historic District

	1902	1910	1910	1906	1906	1937
use of	Wagner Bldg.	Huston Bros. Billiards	Huston Bros. & Bowling	G.H. Wild Co. tailors	Earl Walker billiards	S.W. Trick Bldg. Kresge's
use of	Border's Book Shop	vacant	State Discount	Wild Men's Shop	Continental Restaurant	Vacant
	Commercial Vernacular	Beaux-Arts	Beaux-Arts	Commercial -	Vernacular	Art Moderne
	two	two	two	two	two	two
	brick	brick	brick	brick	brick	brick
single	fixed, panes	single	double-hung, one-over-one	double-hung, one-over-one	double-hung, one-over-one	fixed panes
	tapestry brick	arches, trim, pilasters	arches, stone trim, pilasters	brick cornice, stone trim	brick cornice, stone trim	tapestry brick

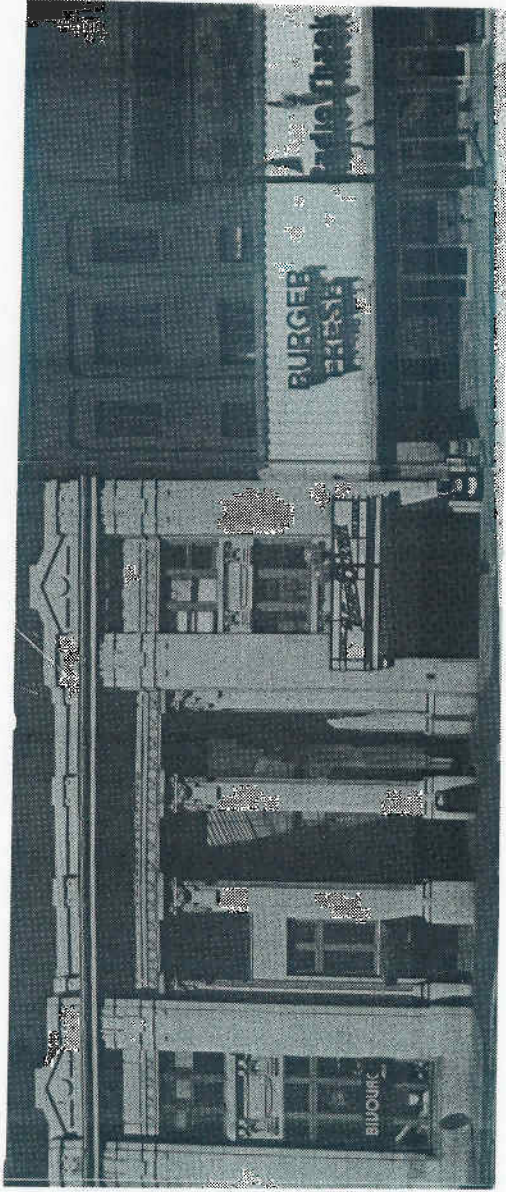


342 340 338 336 334 332

SOUTH STATE STREET

(west side, part I) State Street Historic District

	1905	1897	c.1930	1888	1888	c.1930
Hamilton College	Business	F. J. Schleeede bookbinder	W.W. Tuttle confection.	Nickels Hall	Nickels Hall	Donn & Ely barbers
Steve's	Tice's	Ashley's	Bivouac	Bivouac	Louise Flowers	Bivouac
Commercial Vernacular	Romanesque	Commercial Vernacular	Italianate	Italianate	Italianate	Commercial Vernacular
three	two	two	three	three	three	two
brick	brick	brick	brick	brick	brick	brick
fixed, single pane	double-hung, one-over-one	double-hung, one-over-one	double-hung, one-over-one	double-hung, one-over-one	double-hung, one-over-one	double-hung, eight-over-eight
upper cornice, bay window	brick cornice, round arches	tapestry brick	stone arches	stone arches	stone arches	tapestry brick
		trim,	trim,	trim,	trim,	trim,
		arches	arches	arches	arches	arches

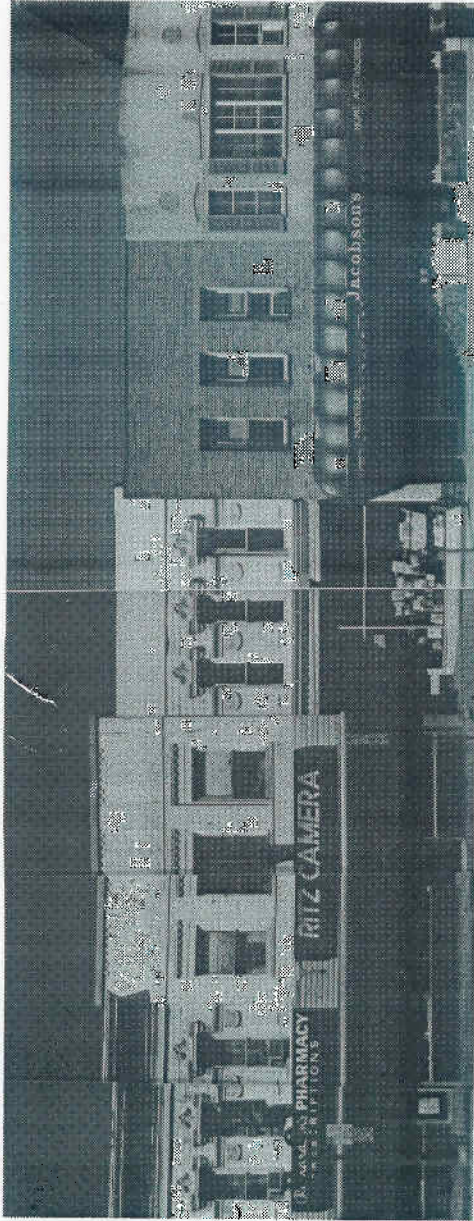


**330 **328 **326 324 322

SOUTH STATE STREET

(west side, part II) State Street Historic District

1916	1916	1917	1870's	1888
Farmers' & Mechanics Bank	Nickel's Arcade	Wadhams & Co., clothing	Mrs. West Dining Hall	Sheehan & Co. books
Bivouac	Nickel's Arcade	Van Boven	Burger Fresh	Radio Shack
Beaux-Arts	Beaux-Arts	Beaux-Arts	Italianate	Queen Anne
three	three	three	three	two
terracotta	terracotta	terracotta	brick	pressed tin
double-hung, one-over-one	double-hung, one-over-one	double-hung, one-over-one	steel casement	double-hung, one-over-one
cornice, pilasters	cornice, columns	cornice, pilasters	pilasters	tin cornice, details

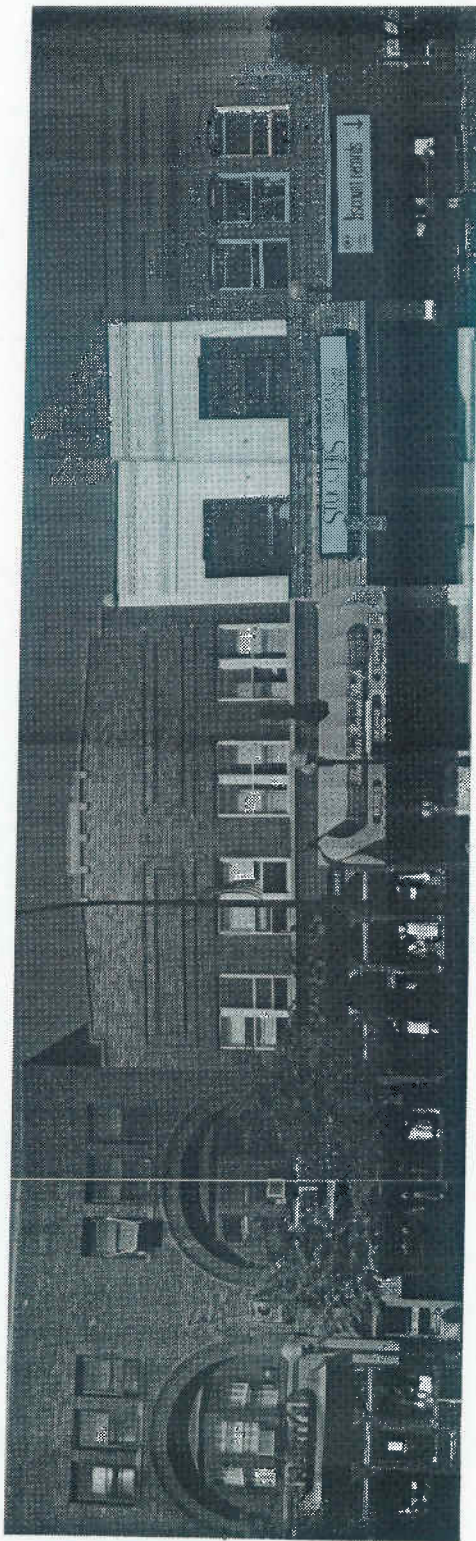


320 318 316 314 312

SOUTH STATE STREET

(west side, part III) State Street Historic District

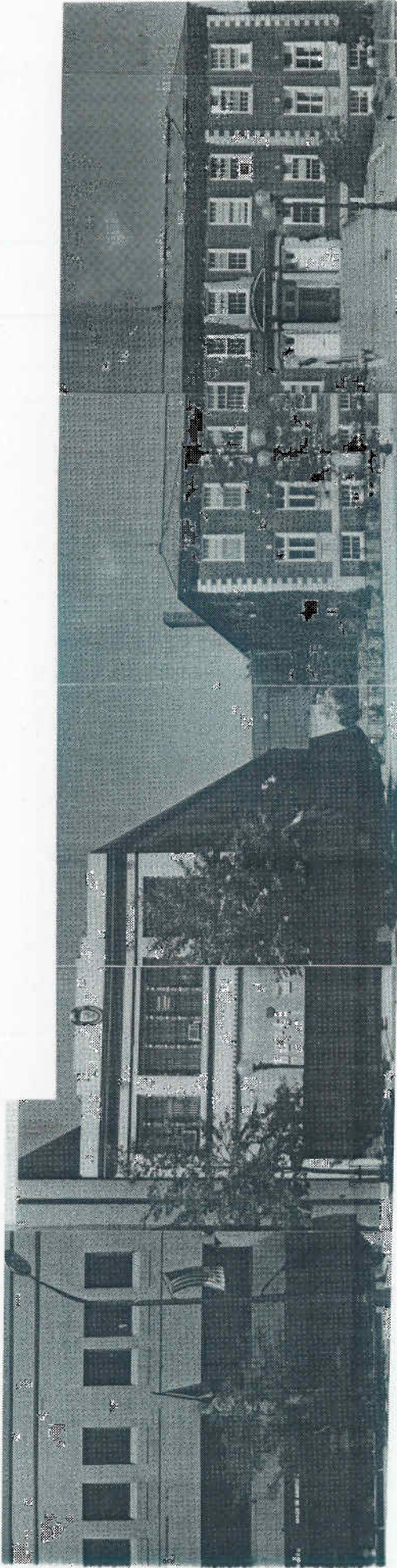
1888	1934	1888	1960's	1931
Sheehan & Co. Books	McLean's groceries	W.D. Warner groceries	Jacobson's	The Cardinal Ladies' specialties
Richardson's	Ritz Camera Center	State Bookshop	Street Jacobson's	Absolute Sound
Queen Anne	Commercial Vernacular	Queen Anne	Modern	Art Deco
two	two	two	two	two
pressed tin	brick	pressed tin	brick	stone
double-hung, one-over-one	double-hung, one-over-one	double-hung, one-over-one	double-hung, one-over-one	multi-paned
tin cornice, details	tapestry brick	tin details	none	round carved medal-lions



310 308 306 304 302 300

SOUTH STATE STREET (west side, part IV) State Street Historic District

1890	1890	1901	1901	1902	1901
r's Books	Butts & Hazel-wood, billiards	Skinners Bookmaker	Banfield's Shoemaker	E. Foster Confections	Reinhardt Block
ty's	Marty's	Marty's	Van Buren Shop	Stucchis	Discount Records
mercial nacular	Commercial Vernacular	Commercial Vernacular	Commercial Vernacular	Commercial Vernacular	Commercial Vernacular
ee	three	two	two	two	two
ck	brick	brick	brick	brick	brick
ple-hung, -over-one	double-hung, one-over-one	double-hung, one-over-one	double-hung, one-over-one	double-hung, one-over-one	double-hung, over-one
id arches, windows	round arches, bay windows	tapestry brick	tapestry brick, stone trim	tapestry brick	tapestry brick, name stone



0(625 E. Liberty)

214-18

204(U/M): Lane Hall)

SOUTH STATE STREET

(west side, part V) State Street Historic District

1983

Street Plaza

Street Plaza

1928

Goldman Brothers Building

Marty Walker

Commercial Vernacular

two

stone/brick

double-hung, one-over-one

medallion ("GBB"), cornice

single pane

pillars, inset sills

1916

U-M YMCA

University of Michigan, Lane Hall

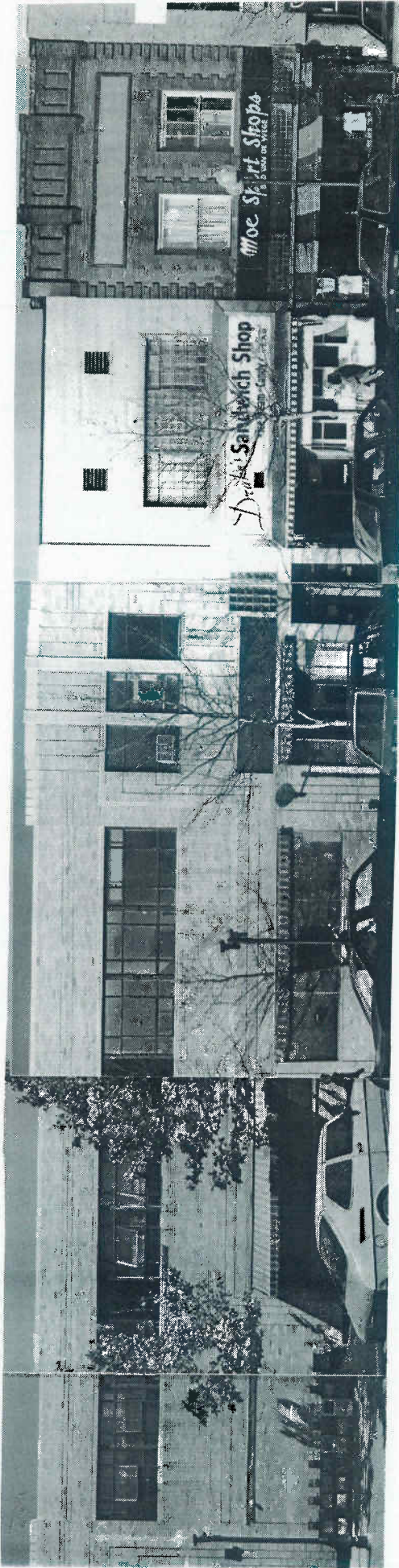
Georgian Revival

two-and-a-half

brick

double-hung, multi-paned

stone quoins, entrance & center window



(317 S.State)

709

711

NORTH UNIVERSITY AVENUE

(part I) State Street Historic District

1937

(1899) c.1950

1905

S.W. Trick Bldg., Kresge's

Moses Kerngo,
billiards

Henry & Kyer, tailors

vacant

Drake's Sandwich Shop

Moe Sport Shops

Art Moderne

Modern

Commercial Vernacular

two

two

two

brick

brick

brick

steel hopper

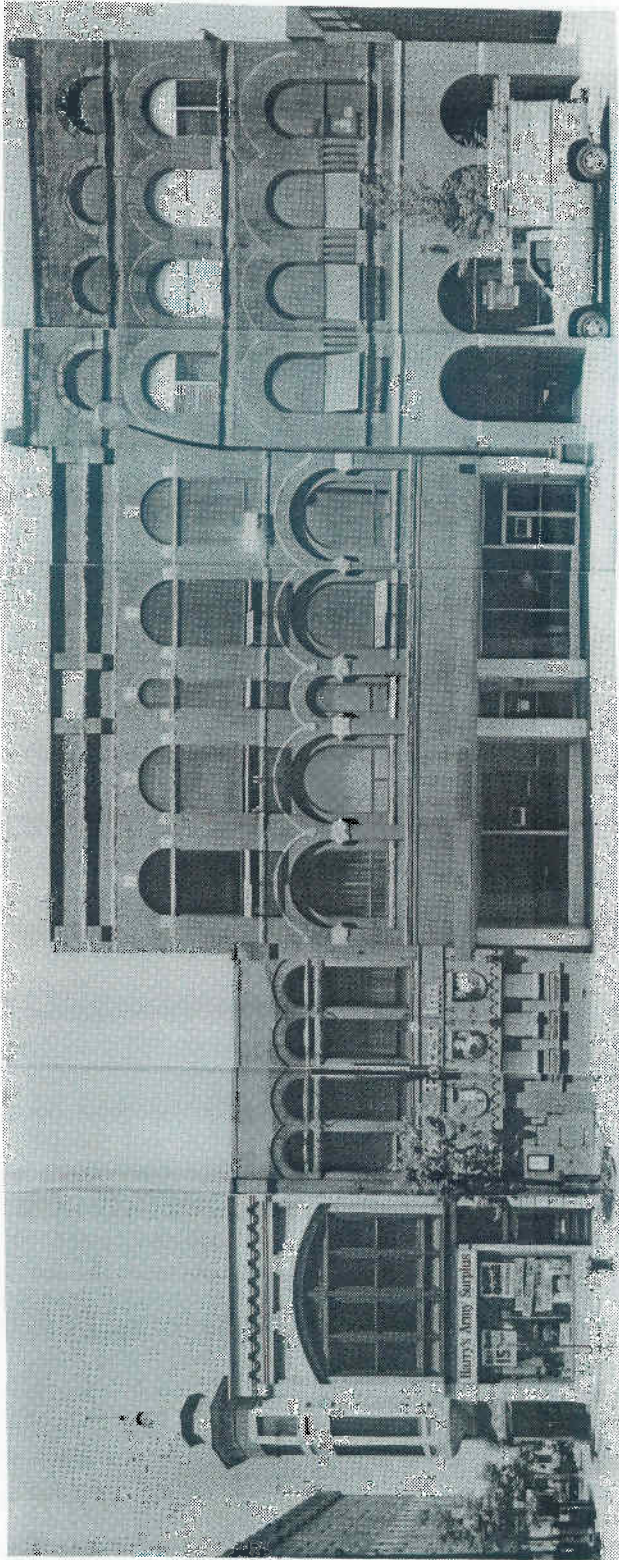
steel casement

double-hung, eight-
over-eight

tapestry brick, curved corner

none

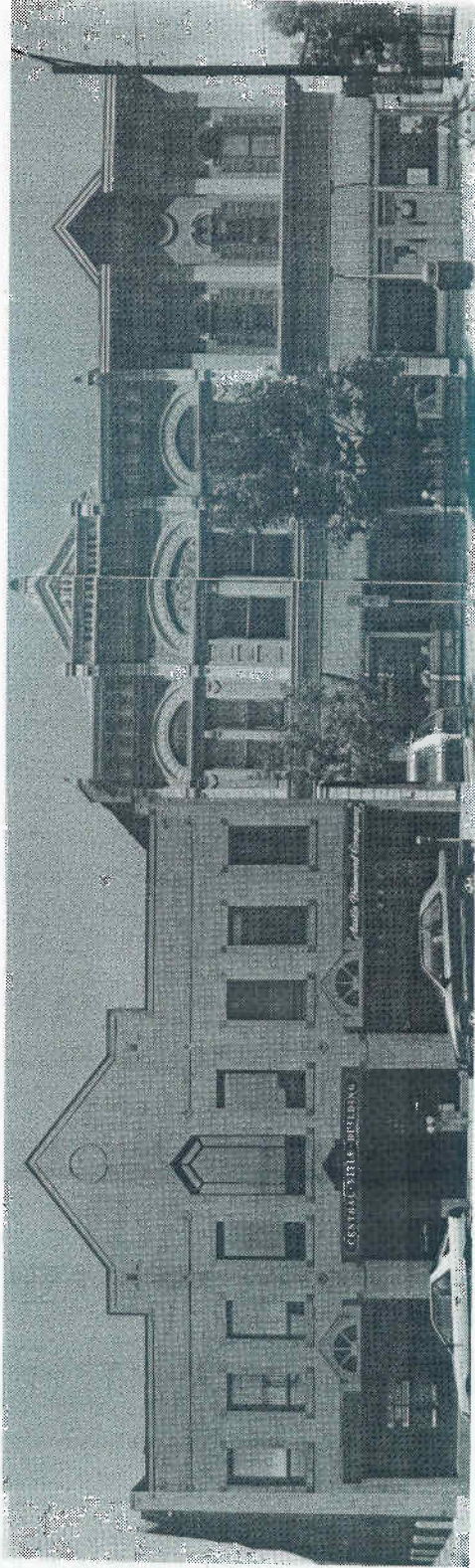
brick quoins, cornice



*201 203 205 207 209-211

EAST WASHINGTON STREET (north side, part I) Main Street Historic District

1893	1896	c.1895	c.1895	1899
Hoelzle Meats	C.H. decorators	Major Sudworth Allmendinger	Building Music Store	Ann Arbor Music Company
Harry's Army Surplus	Metzger's	vacant	vacant	vacant
Queen Anne	Romanesque	Romanesque	Romanesque	Romanesque
two	two	three	three	three
brick	brick	brick	brick	brick
double-hung, one-over-one	single pane	awning	awning	awning & double-hung, one-over-one
brick cornice, arch, tower & finial	round arches	brick cornice, round arches,	stone trim	round arches, tapestry brick, stone trim



(N)213-215 (N)217

**219

**223

EAST WASHINGTON STREET

(north side, part II) Main Street Historic District

(1836) 1986

1892

1868

First Presbyterian Church

Weinmann Meats

Weinmann & Gall
meats

Central Title Co., Austin Diamond Co.

Deluxe Drapery & Shade

Papa Romano's Pizza

Modern

Queen Anne

Italianate

two

two

two

brick

pressed tin, brick

brick

double-hung, one-over-one

double-hung,
one-over-one

double-hung, one-over-one

tapestry brick

tin cornice, details

restored cornices, round
arches, pilasters, stone trim



220

*216-218

214

212

EAST WASHINGTON STREET

(south side, part I)

Main Street Historic District

1927	1872	1872	1866
Salvation Army	Sorg & Son painters	Sorg & Son painters	Frederich Sorg painter
Artrain, Jeffrey Michael Powers	Tisch Inc.	Moti Mahal	Running Fit
Collegiate Gothic	Italianate	Italianate	Italianate
three	two	two	two
brick	brick	brick	brick
fixed panes	double-hung, one-over-one	awning	awning
stone trim, buttresses, quoins, shield with motto	cornices, arches, pilasters	arches, pilasters	arch

